

# **Classification of Cardiac Arrhythmia with Respect To ECG and HRV Signal**

Vyankatesh S. Thorat <sup>1</sup>, Dr. Suresh D. Shirbahadurkar <sup>2</sup>, Vaishali V. Thorat <sup>3</sup>

P.G. Student, Department of Electronics & Telecommunication, D.Y. Patil School of Engg, Ambi, Pune, Maharashtra,  
India<sup>1</sup>

Principal of D.Y. Patil School of Engg, Ambi, Pune, Maharashtra, India<sup>2</sup>

Assistant Prof. and P.G. Co-ordinator, Department of Electronics & Telecommunication, D.Y. Patil School of Engg,  
Ambi, Pune, Maharashtra, India<sup>3</sup>

**ABSTRACT:** The Consistent or periodical heart rhythm disorders may result cardiac arrhythmias. the presence of recurring arrhythmic events also known as cardiac dysrhythmia or irregular heartbeats, as well as the erroneous beat detection due to low quality of signal, significantly affects estimation of both time and frequency domain indices of the heart rate variability. the reliable, the real-time classification and the correction of ECG-derived heartbeats is a necessary prerequisite for an accurate online monitoring of HRV and cardiovascular control. In this the Heart Rate Variability (HRV) signals all are analyzed and the various features including time domain and frequency domain and the nonlinear parameters are extracted. then The additional nonlinear features are extracted from electrocardiogram i.e.ECG signals. These features are the helpful in classifying cardiac Arrhythmias. In this then we are going to use genetic programming which is applied to classify heart Arrhythmias using both HRV and ECG features. the Genetic programming selects effective features, and then finds most suitable trees to distinguish between different types of the Arrhythmia. and By considering the variety of extracted parameters from ECG and HRV signals, genetic programming can be used the precisely to differentiate various arrhythmias. The performance of used algorithm is evaluated on MIT-BIH Database. Here we are going to see seven different types of arrhythmia classes which includes the normal beat, the left bundle branch block beat, the right bundle branch beat, the premature ventricular contraction, the fusion of ventricular and normal beat, the atrial premature contraction and paced beat are classified with an accuracy of 98.75%, 98.93% , 99.10%, 99.46%, 99.82%, 99.46% and 99.82% respectively. In this paper also we are going to classify arrhythmias by using the genetic algorithm.

**KEYWORDS:** Arrhythmia, Electrocardiogram (ECG), Heart Rate Variability (HRV), Genetic Programming (GP), Feature Selection.

## **I. INTRODUCTION**

Regarding to classification of cardiac arrhythmia, any disturbance in the heart rhythm can be can cause danger to person. Although cardiac arrhythmia is one of the leading causes of death, it can be treated if detected on time. Heart is a muscular organ which is responsible to pump oxygenated blood throughout blood vessels by rhythmic contractions. Heart Arrhythmia can cause too slow or too fast performance of the heart. To detect it, ECG and HRV signals are widely used. ECG signal records electrical performance of the heart. It contains a lot of important information related to the condition of the heart and one of the most important tools in detecting heart diseases. A typical ECG signal consists of the P-wave, QRS complex, and T-waves. The P wave is the result of slow moving depolarization of the atria. QRS complex which is made of Q, R and S waves shows ventricular depolarization. The T wave represents repolarization of the ventricles, and is longer in duration than depolarization. HRV signal describes the variations between consecutive heartbeats. It is a non offensive evaluation method of the nervous system which controls

# International Journal of Innovative Research in Science, Engineering and Technology

(An ISO 3297: 2007 Certified Organization)

Vol. 5, Issue 8, August 2016

cardiovascular system and is a measurement of the interaction between sympathetic and parasympathetic activity in autonomic nervous system.

HRV signal is a non-stationary signal and its changes can be interpreted as a current or upcoming disease. Several methods for automatic detection and classification of cardiac arrhythmias have been proposed in literature, including: artificial immune recognition system with fuzzy weighted, threshold-crossing intervals, neural networks, fuzzy neural networks, fuzzy equivalence relations, Bayesian classifiers, support vector machines, wavelet transforms, combined wavelet transformation and radial basis neural networks, fuzzy logic combined with the Markov models and the rule based algorithms. Some papers used techniques which are based on ECG segment. The various features of the ECG signal including the morphological features are extracted and used for classification of the cardiac arrhythmias. This is a time consuming procedure and the results are very sensitive to the amount of noise. An alternative approach would be to extract the HRV signal from the ECG signal first by recording the R-R time intervals and then processing the HRV signal instead. This is a more robust method since the R-R time intervals are less affected by noise. One drawback of the proposed HRV-based algorithm is that some of the arrhythmia types such as the left bundle branch block and the right bundle branch block beats cannot be detected using only the heart rate variability (HRV) features. In this, a new arrhythmia classification algorithm is proposed which is able to effectively classify seven types of arrhythmia. These arrhythmias are namely the normal beat (NB), left bundle branch block beat (LBBB), right bundle branch beat (RBBB), premature ventricular contraction (PVC), fusion of ventricular and normal beat (FUSION), atrial premature contraction (APC) and paced beat (PACE). In this, various features from both ECG and HRV signal are extracted and given to a genetic programming to produce the suitable solution trees to distinguish between different types of arrhythmia. From the various identified features the proposed method selects the effective ones and categorizes the seven classes of heart arrhythmia highly precisely. The main objective of the proposed work is: genetic programming is applied to classify heart arrhythmias using both HRV and ECG features. Genetic programming selects effective features, and then finds the most suitable trees to distinguish between different types of arrhythmia.

## II. LITERATURE REVIEW

In this paper the potential of this method for clinical uses and real-time detection was examined using 180 electrocardiogram records the 60 atrial fibrillation, the 60 ventricular fibrillation, and the 60 ventricular tachycardia. The proposed algorithm has achieved high accuracy i.e more than 97% and is computationally fast in detection[6].

In this paper, the new classification algorithm of ECG beats, that are applying fuzzy hybrid neural network and the features drawn from the higher order statistics has been proposed in the paper. The cumulates of the second, then third, and fourth orders have been used for feature selection. The hybrid fuzzy neural network is applied in the solution which consists of the fuzzy self-organizing sub network connected in cascade with the multilayer perception, working as the final classifier. then The c-means and Gustafson-Kassel algorithms for the self-organization of the neural network have been applied. The all results of experiments of recognition of the different types of beats on the basis of the ECG waveforms have confirmed good efficiency of the proposed solution. The investigations shows that the method may find practical application in the recognition and classification of different type of heart beats[7].

In this paper the reliable, real-time classification and correction of ECG-derived heartbeats is a necessary prerequisite for an accurate online monitoring of HRV and cardiovascular control. We have developed a novel point-process-based method for the real time R-R wave interval error detection and correction. Given an R-wave event, we assume that length of the next R-R wave interval follows a physiologically motivated, time-varying inverse Gaussian probability distribution. then we devise an instantaneous automated detection and correction procedure for erroneous and arrhythmic beats by using the information on the probability of the occurrence of the observed beat provided by model. We then test our algorithm over two datasets from Physio Net archive. The Fantasia normal rhythm database is artificially corrupted with known erroneous beats to test the both the detection procedure and the correction procedure. The benchmark MIT-BIH Arrhythmia database is further considered to test the detection procedure of real arrhythmic events and then compare it with results from previously published algorithms. Our automated algorithm represents an improvement over previous procedures, with best specificity for the detection of correct beats, as well as highest sensitivity to missed and extra beats, and artificially misplaced beats, and for real arrhythmic events[1].

# International Journal of Innovative Research in Science, Engineering and Technology

(An ISO 3297: 2007 Certified Organization)

Vol. 5, Issue 8, August 2016

In this following paper investigates four novel methods for noncontact measurement of heart rate [HR], consequently its derivate HR variability, an important marker of autonomic activity proven to be predictive of likelihood of future health related events. then Feasibility study of basic principles is focused on measurements of signal-to-noise ratio with respect to the distance between the subject and HR sensor/apparatus[2].

In this paper analyzing the Holter recordings collected at baseline during the European Myocardial Infarction Amiodarone Trial (EMIAT) then we evaluate the possibility of using the slope of the power spectrum of heart rate variability signals (HRV) in the vicinity of  $f = 0$ , for postinfarction risk stratification[3].

In this the study proposes the use of pulse rate variability (PRV) extracted from the PPG signal instead of HRV. Polysomnographic registers from 21 children (aged  $4.47 \pm 2.04$  yr.s) were studied. The subject classification based on DA Pevents and PRV analysis obtained an accuracy of 86.67% which represents an improvement of 6.67% with respect to the HRV analysis. These results suggest that PRV can be used in apnea detectors based on DAP events, to discriminate apneic from nonapneic events avoiding the need for ECG recordings[4].

In this paper, the potential of the authors' method for clinical uses and real-time detection was examined using human surface ECGs and intra cardiac electro grams (EGMs). The method achieved high sensitivity and specificity ( $>0.98$ ) in discrimination of supraventricular rhythms from ventricular ones. The authors also present a hardware implementation of the algorithm on the commercial single-chip CPU[5].

### III. METHODOLOGY

#### A) Block diagram

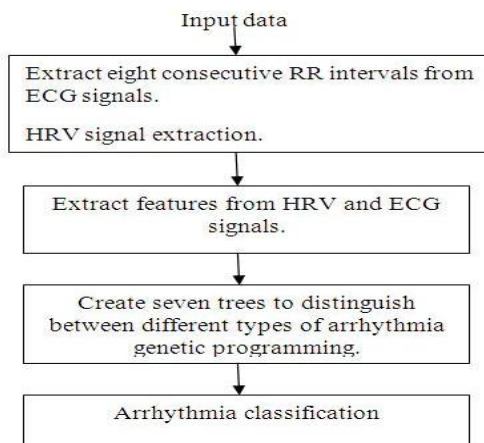


Figure no.1 Block Diagram

In this the proposed method are tested using the MIT-BIH arrhythmia database. This database contains the 48 ECG records. Each of record is approximately 30 minutes long and it includes the 109000 R-R wave intervals with sampling frequency of 360 Hz. Each beat has been annotated independently by two cardiologists. Their annotations are then compared, the consensus on disagreements was obtained, and reference annotation files were prepared. In the most of the records, the upper signal is a modified limb lead II i.e. ML II. and then the lower signal is a modified lead V1 (VI). All of these ECG records are chosen from the lead II and include the 8 sequential R-R wave intervals. Extracted from records of this database include all seven classes of heart beat. After dividing the ECG signals into the 8 sequential RR wave intervals, HRV signal is extracted from the calculating the time intervals between every two consequential R-wave in an ECG signal (R-wave is located in the maximum absolute value of the signal within the time window).

# International Journal of Innovative Research in Science, Engineering and Technology

(An ISO 3297: 2007 Certified Organization)

Vol. 5, Issue 8, August 2016

## IV. FEATURE EXTRACTION

### 1. The Extraction of features from HRV signal

The behavior of HRV signal includes both the linear and the non-linear behavior combination. The combination of the seall features are considered. These feature includes time domain and frequency domain with nonlinear parameters. then Each ECG signal is divided into 8 consequential R-R intervals and each segment of HRV,i.e.heart rate variability signal includes time distance between every two consequential R-wave in ECG signals.

#### a) Time domain features

the Time-domain parameters of HRV(heart rate variability) are the easiest as these are based on common statistical methods. In this paper, seven commonly used time domain features are as follows:

The mean value of the eight R-R wave intervals within each segment.i.e. (Mean).

- The root mean square successive difference of the eight R-R wave intervals in each segment (RMSSD).
- The standard deviation of the 8 R-R intervals within each segment (SDNN).
- The standard deviation of differences between adjacent R-R intervals within each segment (SDSD).
- The number of successive difference of the intervals which differ by more than 50, 10 and 5 ms,respctively, then divided by 8,total number of the RR Interval within each segment (pNN50, pNN10, pNN5).

#### b) Frequency domain features

LF/HF: Although the time domain features are the important to classify arrhythmias, they are not capable of distinction of sympathetic and parasympathetic content of the HRV signal. For this purpose, the HRV signal is transformed into frequency domain and the ratio of the spectral power in lower bound (0.04-0.15Hz) to spectral power in upper bound (0.15- 0.5Hz) is to be calculated. The lower bound frequency power is related to controlling temperature and cardiovascular mechanism and the upper frequency is related to the cardiac vagal activity.

#### c) Nonlinear features

The nonlinear properties of HRV can be analyzed using such as follow measures:

ApEn: Approximate entropy is use to measure the complexity or irregularity of signal. Large values of ApEn indicates high irregularity and smaller values of the ApEn implies higher regularity. The ApEn is then computed as follows.For each segment in HRV signal with length N,  $u_j$  is defined as follow:

$$u_j = (RR_j, \dots, RR_{j+m-1}), j=1, \dots, N-m+1, \dots \quad (1)$$

where m is called the embedding dimension and the N is the number of measured RR intervals. The distance between these vectors is defined as the maximum absolute difference between the corresponding elements. For each  $u_j$  the relative number of vectors  $u_k$  for which  $d(u_j, u_k) \leq r$  is calculated by Eqs. (2) and (3)

$$d(u_j, u_k) = \max \{ |RR_{j+n} - RR_{k+n}| \mid n = 0, \dots, m-1 \}, \quad (2)$$

$$C_j^m(r) = \frac{|\{u_k \mid d(u_j, u_k) \leq r\}|}{N-m+1} \quad (3)$$

Due to the normalization, the value of C (r) m j is always smaller or equal to 1. Afterward, the mean of natural logarithm of each C (r) m j over j is taken to yield:

$$\phi^m(r) = \frac{1}{N-m+1} \sum_{j=1}^{N-m+1} \ln C_j^m(r). \quad (4)$$

Finally approximate entropy calculated by Eq. (5) ApEn(m,r,N) (r) (r). (5)  $m+1 = F - F$

$$\phi^m(r) = \frac{1}{N-m+1} \sum_{j=1}^{N-m+1} \ln C_j^m(r). \quad (5)$$

For calculating ApEn for each HRV segment, the value of m and r are chosen as m = 2 and r = 0.2SDNN.

SpEn: Spectral entropy evaluates the HRV signal complexity in frequency domain [31]. Shanon Channel entropy estimates HRV entropy as

$$H = - \sum_f P_f \log(P_f), \quad (6)$$

where  $P_f$  is value of the probability density function (PDF) of the process at frequency f.

# International Journal of Innovative Research in Science, Engineering and Technology

(An ISO 3297: 2007 Certified Organization)

Vol. 5, Issue 8, August 2016

## V. FLOWCHART

Genetic programming is using to classify the arrhythmias. Genetic programming was first introduced by Koza using tree representation. A member in a genetic programming has the tree structure and as the result two types of the genes called the functions and the terminals are defined. In fact the intermediate nodes act as functions and the leaves act as the terminals. In this the method the extracted features and some random numbers are used as terminals of the tree. The initialization of the population is random and each tree is evaluated by the fitness function. The Different genetic operators like crossover the mutation are used to make new trees and the new generation is generated. As shown in Fig. 2, the procedure is continued until the ending requirements are met. The procedure is explained in details in the following sub section.

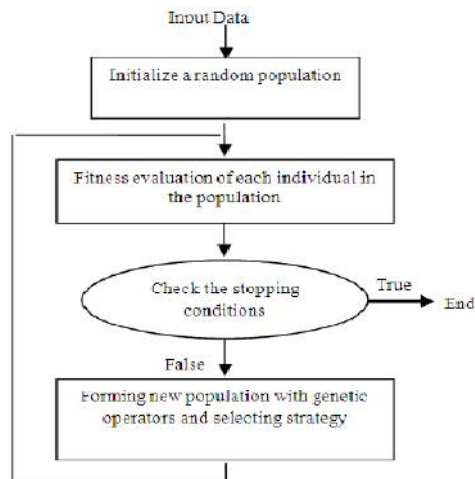


Figure no.2 Schematically overview of Genetic Programming

### A. To Create an initial population:

The initial population is created by ramped half-and-half method. In this method, the both Grow and Full methods are used to produce initial population. For each depth level of the trees considered, half of the individuals are initialized using the full method, and then the other half using the grow method. The population of trees resulting from this initialization method is very diverse with the then balanced and unbalanced trees of several different depths. The individual's terminals are selected from the extracted features and then from set of random numbers. In this, we are using following operators as the function set: add, subtract, times, divide, sine, cosine and if-then-else structures. While calculating  $X1/X2$ , if  $X2$  is zero,  $X1$  is returned as the response. The if-then-else structure is defined as follows:

$$myif(a, b, c) = \begin{cases} c & a < 0 \\ b & otherwise \end{cases}$$

When the initial population is created, then each individual's fitness is measured. The value of each individual reflects the accuracy of output of genetic programming with respect to ideal output.

### B. Generating new population

To generate a new population, the some processes should be repeated until the number of new population is made equal to number of old population.

### C. Genetic operators

After defining the fitness function, genetic operators should also be defined in order to improve the population. Common genetic operators are like-reproduction, crossover and mutation. In reproduction, 10% of population in each generation is transmitted to the new population without any changes. The procedure of choosing individuals to transmit to the new population depends on selecting strategy. In crossover, the random nodes are the chosen from the both parent trees and the subtrees starting at these two nodes are swapped resulting in two the offspring. There is no bias in the choosing internal or terminal nodes as the crossing sites. In tree mutation, a random node is chosen from the parent

# International Journal of Innovative Research in Science, Engineering and Technology

(An ISO 3297: 2007 Certified Organization)

Vol. 5, Issue 8, August 2016

tree and the sub tree starting by a randomly generated tree. This new random tree is created with Grow initialization method and obeys the size/depth restrictions imposed on to the trees created for initial generation.

### D. The Selection strategy

A genetic programming without a suitable selection strategy is not the different than random search. Some of the common approaches for selecting suitable parents are fitness proportionate selection, Greedy selection and Tournament selection. In this paper Lexicographic Parsimony Pressure Tournament strategy is chosen for selecting parents. In this strategy like the Tournament selection, the random number of individuals are selected from the population and the best of them is determined. The main difference is that if two individuals are equally fit, the tree with fewer nodes is chosen as the best. This technique has shown to effectively control bloat in different types of problems.

### Results

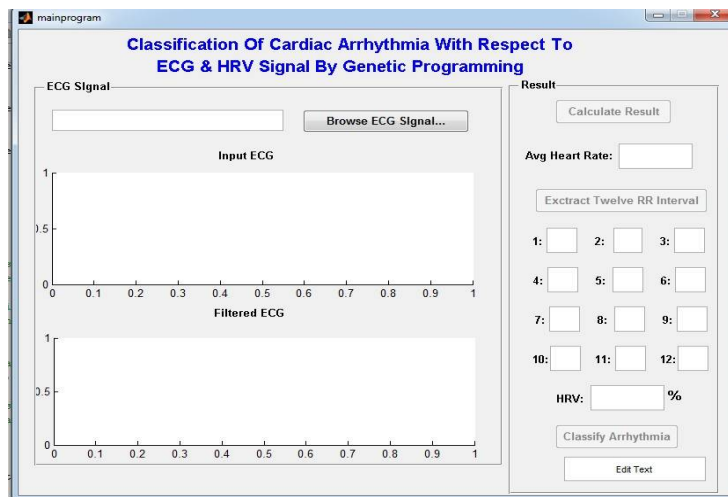


Figure no.3 Output window

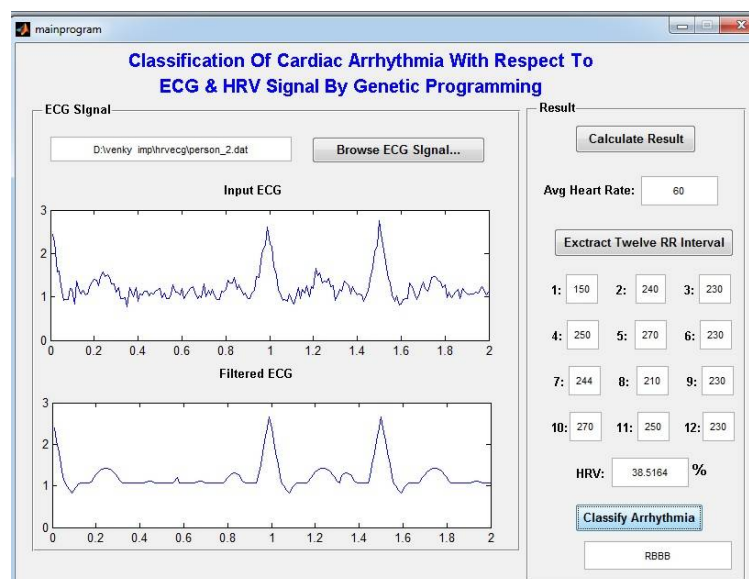


Figure no.4 Fig.of Result of arrhythmia(RBBB)

# International Journal of Innovative Research in Science, Engineering and Technology

(An ISO 3297: 2007 Certified Organization)

Vol. 5, Issue 8, August 2016

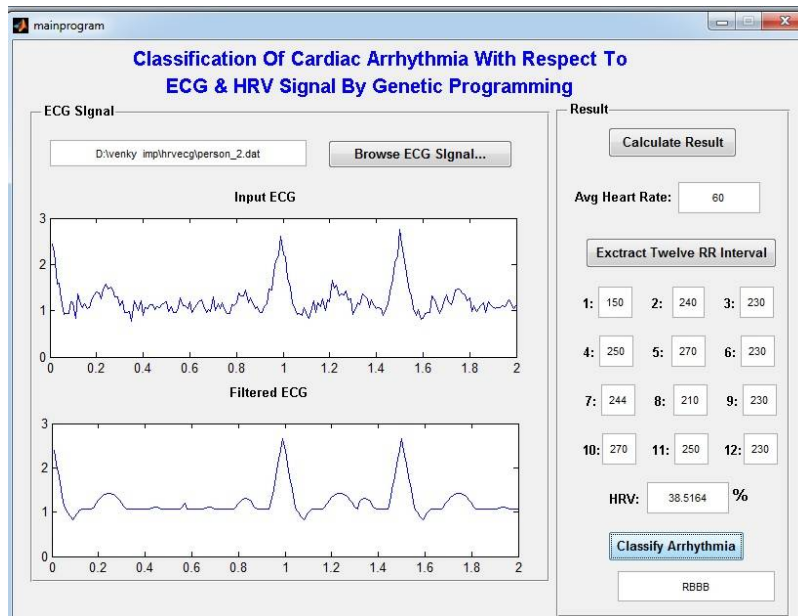


Figure no.5 Fig. of Result of arrhythmia(APC)

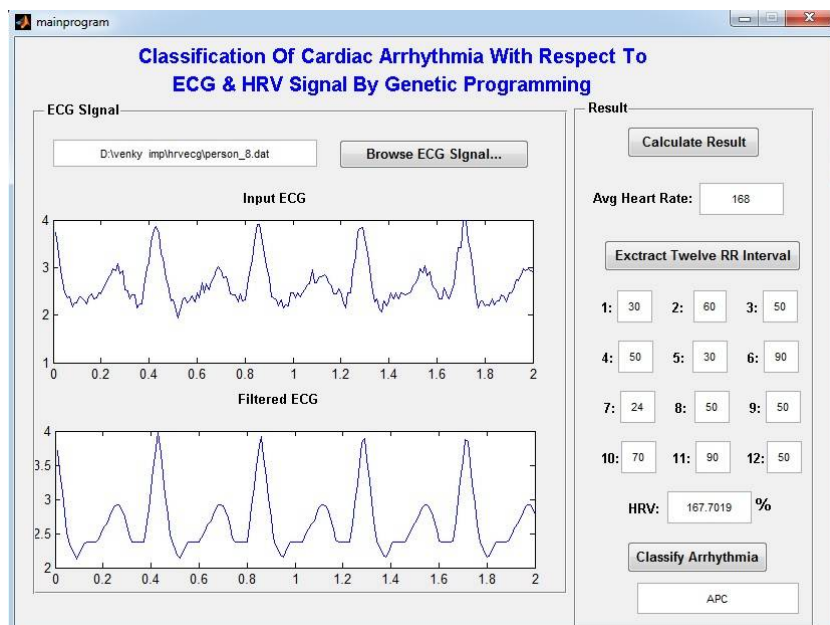
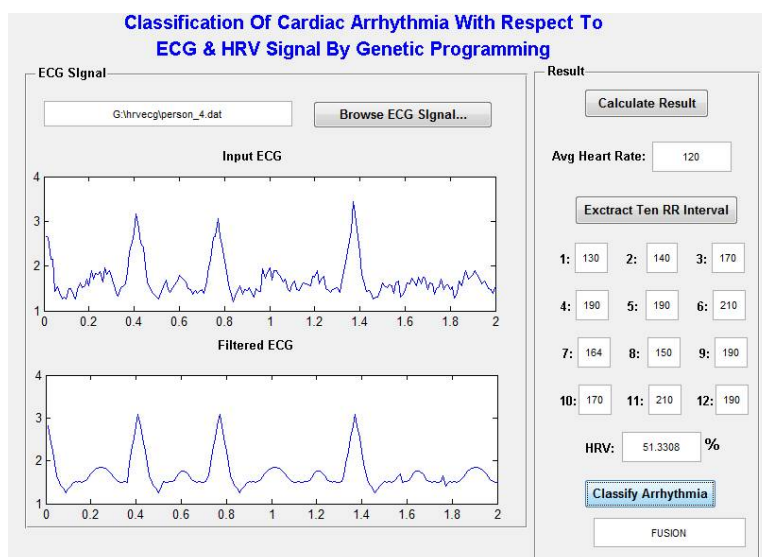


Figure.6 Fig. of Result of arrhythmia(APC)

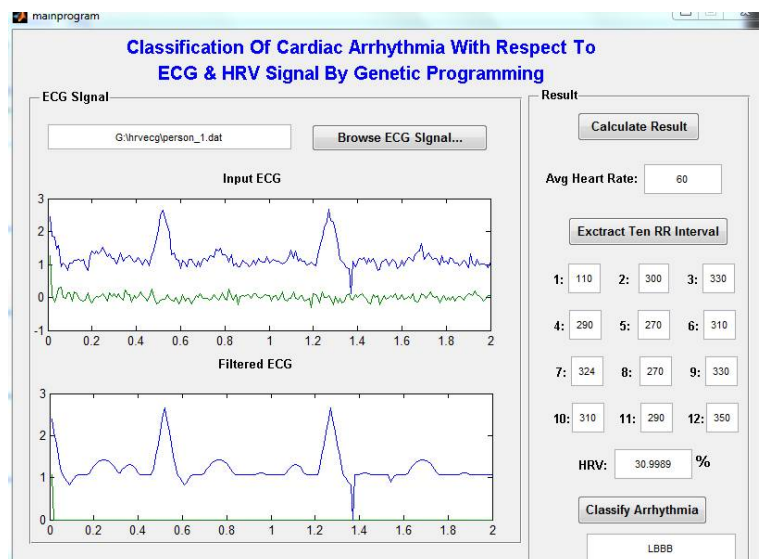
## International Journal of Innovative Research in Science, Engineering and Technology

(An ISO 3297: 2007 Certified Organization)

Vol. 5, Issue 8, August 2016



**Figure.7** Fig.of Result of arrhythmia(FUSION)



**Figure.8** Fig.of Result of arrhythmia(LBBB)

This is expected to classify the arrhythmia of Normal beat i.e.NB, Left Bundle Branch Block beat i.e.(LBBB), Right Bundle Branch Block beat i.e.(RBBB), Premature Ventricular Contraction i.e.(PVC), fusion of ventricular and normal beat i.e.(FUSION), Atrial Premature Contraction i.e.(APC) and paced beat i.e.(PACE), the genetic programming produce appropriate tree to distinguish any of the arrhythmia from others. For avoiding bias, number of training data of each specific arrhythmia type has about the same size of summation of other classes. then The four commonly used measures of sensitivity, specificity, positive predictivity, and accuracy are derived for proposed algorithm.



# International Journal of Innovative Research in Science, Engineering and Technology

(An ISO 3297: 2007 Certified Organization)

Vol. 5, Issue 8, August 2016

## VII. CONCLUSION

This system used for classification of cardiac arrhythmia and each ECG signals divide to the 8 consequential R-R wave intervals and the HRV signal are extracted from it. The 12 features are then extracted from HRV signals and the 3 are nonlinear features are extracted from ECG signals. To classify cardiac arrhythmias, these features are used as terminal in genetic programming and the algorithm selects for affective features to distinguish each arrhythmia from others. Due to the short processing time and relatively high accuracy of the used method, it can be used to as a real-time arrhythmia classification system

## ACKNOWLEDGMENT

We are using this opportunity to express our gratitude to everyone who supported us for writing this paper. We are thankful for their guidance and invaluable advice during this work. We are sincerely grateful to them for sharing their truthful and illuminating views on a number of issues related to this paper.

I am also appreciative and genuinely thankful to our H.O.D. Prof. Santosh G. Bari and I am also thankful to our beloved Principal Dr. V. N. Nitware sir for providing us the basic infrastructure and other amenities

## REFERENCES

- [1] Luca Citi, Emery N. Brown, and Riccardo Barbieri, "A Real-Time Automated Point-Process Method for the Detection and Correction of Erroneous and Ectopic Heartbeats", IEEE TRANSACTIONS ON BIOMEDICAL ENGINEERING, VOL. 59, NO. 10, OCTOBER 2012.
- [2] Jure Kranjec, Samo Beguš, Janko Drnovšek, and Gregor Geršak, "Novel Methods for Noncontact Heart Rate Measurement: A Feasibility Study", IEEE TRANSACTIONS ON INSTRUMENTATION AND MEASUREMENT, VOL. 63, NO. 4, APRIL 2014.
- [3] Roberto Sassi, Katerina Hnatkova, Marek Malik, and Maria Gabriella Signorini, "HRV Scaling Exponent Identifies Post infarction Patients Who Might Benefit From Prophylactic Treatment With Amiodarone", IEEE TRANSACTIONS ON BIOMEDICAL ENGINEERING, VOL. 53, NO. 1, JANUARY 2006.
- [4] Jesús L'azaro, Eduardo Gil, José María Vergara, and Pablo Laguna, "Pulse Rate Variability Analysis for Discrimination of Sleep-Apnea-Related Decreases in the Amplitude Fluctuations of Pulse Photoplethysmographic Signal in Children", IEEE JOURNAL OF BIOMEDICAL AND HEALTH INFORMATICS, VOL. 18, NO.1, JANUARY 2014.
- [5] K. Minami, H. Nakajima, and T. Toyoshima, "Real time discrimination of ventricular tachyarrhythmia with Fourier transform neural network" IEEE Trans. Biomedical Engineering, vol. 46, NO. 2, 179-185, 1999.
- [6] Y. Wang, YS. Zhu, NV. Thakor and YH. Xu, "A short-time multifractal approach for arrhythmia detection based on fuzzy neural network" IEEE Trans. Biomedical Engineering, vol. 48, NO. 9, pp. 989-995, 2001.
- [7] S. Osowski and TH. Linh, "ECG beat recognition using fuzzy hybrid neural network". IEEE Trans. Biomedical Engineering, vol. 48, pp.1265-271, 2001.
- [8] OT. Inan, L. Giovangrandi and G. Kovacs, "Robust neural-network based classification of premature ventricular contractions using wavelet transform and timing interval features" IEEE Trans. Biomedical Engineering, vol. 53, NO. 12, pp.2507-515, 2006.

## BIOGRAPHY



Mr. Vyankatesh S. Thorat, P.G. Student, Department of Electronics & Telecommunication, D.Y. Patil School of Engg, Ambi, Pune, Maharashtra, India<sup>1</sup>



**Dr. Suresh D. Shirbahadurkar (guide)** [B.E (EC), M.E (EC), Ph.D(EC)], Principal of , D.Y. Patil School of Engg, Ambi, Pune, Maharashtra, India<sup>2</sup>



**Mrs. Vaishali V. Thorat (Co-guide)** B.E , M.TECH (VLSI), Assistant Prof. and P.G. Co-ordinator, Department of Electronics & Telecommunication, D.Y. Patil School of Engg, Ambi, Pune, Maharashtra, India<sup>3</sup>