

Automatic License Plate Recognition System for Indian Vehicle Identification

Kuntal Bhowmick¹, Subhojit Roy², Deepak Kumar Jha³

Asst. Professor, Dept. of Computer Sc. & Engg., Kalyani Government Engineering College, Kalyani, Nadia, India¹

Asst. Professor, Dept. of Computer Sc. & Engg., Om Dayal College of Engineering, Howrah, West Bengal, India²

Asst. Professor, Dept. of Computer Sc. & Engg., Kalyani Government Engineering College, Kalyani, Nadia, India³

ABSTRACT: Automatic License Plate Recognition (ANPR) is a practical application of image processing which uses number (license) plate is used to identify the vehicle. The aim is to design an efficient automatic vehicle identification system by using the vehicle license plate. The system is implemented on the entrance for security control of a highly restricted area like military zones or area around top government offices e.g. Parliament, Supreme Court etc.

It is worth mentioning that there is a scarcity in researches that introduce automatic number plate recognition for Indian vehicles. In this paper, a new algorithm is presented for Indian vehicle's number plate recognition system. The proposed algorithm consists of two major parts: plate region extraction and plate recognition. Vehicle number plate region is extracted using the image segmentation in a vehicle image.

The performance of the proposed algorithm has been tested on real license plate images of Indian vehicles. Based on the experimental results, we noted that our algorithm shows superior performance special in number plate recognition phase.

KEYWORDS: Automatic Number Plate Recognition (ANPR), Character Segmentation, Edge detection, Extraction plate region, Image Segmentation, Number plate recognition, Number Plate, Optical Character Recognition.

I. INTRODUCTION

Nowadays vehicles play a very big role in transportation. Also the use of vehicles has been increasing because of population growth and human needs in recent years. Therefore, control of vehicles is becoming a big problem and much more difficult to solve.

The Automatic Number Plate Recognition (ANPR), or license plate recognition (LPR) was invented in 1976 at the Police Scientific Development Branch in the UK. However, it gained much interest during the last decade along with the improvement of digital camera and the increase in computational capacity. It is can be applied at number of public places for fulfilling some of the purposes like traffic safety enforcement, automatic toll text collection [1], car park system [2] and Automatic vehicle parking system [3]. It is simply the ability to automatically extract and recognition a vehicle number plate's characters from an image. In essence it consists of a camera or frame grabber that has the capability to grab an image, find the location of the number in the image and then extract the characters for character recognition tool to translate the pixels into numerically readable character.

Vehicle number plate Identification (VNPI) is a part of digital image processing which broadly used in vehicle transportation system to identify the vehicle. Number plate recognition systems have wide range of application such as traffic maintenances, tracing stolen cars, automatic electronic Toll collection system and many more. But the main aim is to control the traffic management system. In State like West Bengal (India) the traffic management system developing day by day. In India the number plate containing white background with black foreground color for private cars and for the commercial vehicle used yellow as background and black as foreground color. The number plate start with two digit letter "state code" followed by two digit numeral followed by single letter after those four consecutive digits as the below figure 1.1.

International Journal of Innovative Research in Science, Engineering and Technology

(An ISO 3297: 2007 Certified Organization)

Vol. 5, Special Issue 13, October 2016



Figure 1.1-sample of number plate

From the figure 1.1, 1 indicates the Country code, 2 indicate the state code, and 3 indicate the district code, 4 indicate the type of vehicle and 5 indicates the actual registration number. Locating the number plate is very challenging work in the field of image processing. The whole system mainly consists of two steps. First to identify the position of the number plate from the particular vehicle and then segmentation of all the numbers and letters of the number plate. The identification task is challenging because of the nature of the light. The location error will increasing if the color of the number plate is very similar to the background. Noise on the number plates some time cause of error and low accuracy. There are some limitation that led to failure in most practical application due to the diversity of the number plate characteristics and the complexity of the natural environment like rain, snow, for etc. In this paper, we proposed a method mainly based on edge detection and morphological operation and reduce the noise using mid-filtering noise removal method.

II. RELATED WORK

Many plate detection, segmentation algorithm have been proposed to implement VNPI system. Number plate detection algorithm can mainly classify into three classes: edge-based, color base and texture based. The most popular method used for license plate identification is described by Dening Jiang, Tulu Muluneh, Tiruneh Embiale, Ashenafi Gebrehiwot in “Car Plate Recognition System” [1]. Hulli Hsan and Runping Han proposed a method to extract number plate to location based on the edge detection and color information [2]. Ch. Jaya Lakshmi, Dr. A. Jhansi Rani, Dr. K.Sri Ramakrishna, M. kanti Kiran and V.R Siddhartha proposed a novel approach for Indian license plate recognition system. [3]. License plate location algorithm based on edge Detection and morphology are describe in [4] [5] [6] [7].

To locate the number plate its first to identify whether any noise added to the plate. This noise may be the part of outside environment. Seyed Hamidreza Mohades Kasaei and Sayed mohammadreza Mohades Kasaei proposed a method to extracting and recognize the vehicle number plate for passing under outside environment [8].

An efficient method of locating vehicle license plate is proposed by Zhigang Xu and Honglei Zhu [9].

Several segmentation and recognition method are used to number plate segmentation [10]. More correct and efficient segmentation[11] of number plate will produce good and more efficient recognition.

Based on the above mentioned method, many number plate localization algorithms have been developed. In this paper, an improved and efficient approach is identified with high detection rate based on sobel edge detection and morphological operation.

III. PROPOSED METHOD

Number plate is a pattern with very high variations of contrast. If the number plate is very similar to background it's difficult to identify the location. Brightness and contrast is changes as light fall changes to it. In this paper the morphological operations are used to extract the contrast feature within the plate.

The work is divided into several parts:

- A. Input raw image
- B. Image binarization
- C. Reduce noise using mid-filtering method
- D. Enhance contrast using histogram equalizer.
- E. Plate localization
- F. Character segmentation

International Journal of Innovative Research in Science, Engineering and Technology

(An ISO 3297: 2007 Certified Organization)

Vol. 5, Special Issue 13, October 2016

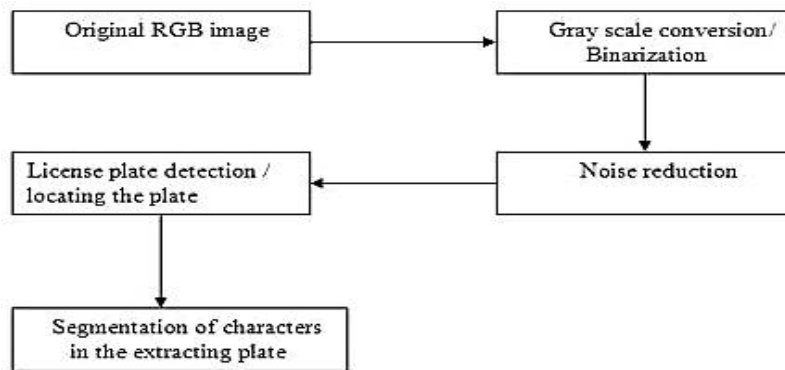


Figure 2.1 shows the basic step diagram of our proposed method.

A. INPUT RAW IMAGE

Input the image that is taken from the car [Figure 2.2].



Figure: 2.2- input car image

B. GRAY SCALE CONVERSION

From the input RGB image it has to be convert to gray scale and the 8-bit gray value is calculated.

C. NOISE REDUCTION

We used median filtering technique to reduce the paper and salt noise. We have used 3x3 masks to get eight neighbors of a pixel and their corresponding gray value.

D. CONTRAST ENHANCEMENT USING HISTOGRAM EQUALIZATION.

Using histogram equalization technique the contrast of each image is being enhanced. The function used to enhancement that is $J = \text{histeq}(k)$; $\text{histeq}()$ enhances the contrast of the images by transforming the values in an intensity image.

When image pixel intensity of 8-neighbour connectivity, we supply a desired histogram, $\text{histeq}()$ chooses the grayscale transformation T to minimize

$$| c_1(T(k)) - c_0(k) |$$

In below we state the change of histogram from original image (Figure 2.3) and after applying the contrast enhancement using histogram equalization (Figure 2.4).

International Journal of Innovative Research in Science, Engineering and Technology

(An ISO 3297: 2007 Certified Organization)

Vol. 5, Special Issue 13, October 2016

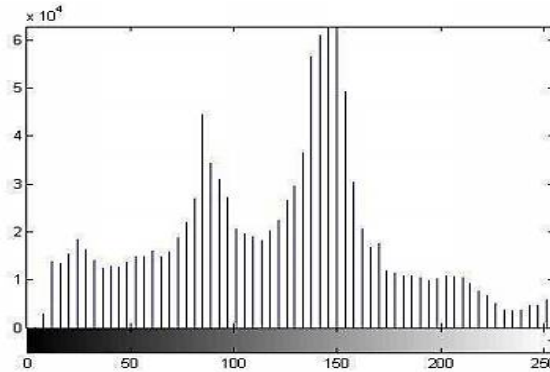


Figure2.3- Before contrast enhancement

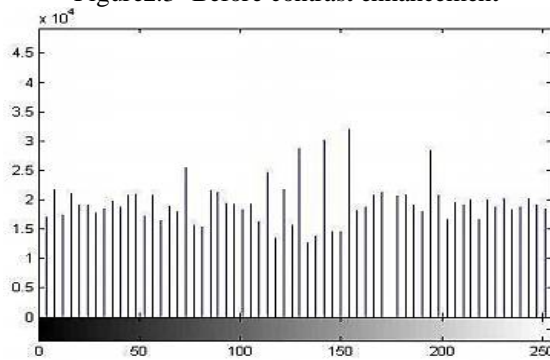


Figure2.4- After contrast enhancement.

E. PLATE LOCALIZATION

The basic step in recognition of vehicle number plate is to detect the plate size. In general number plates are rectangular in shape. Hence we have to detect the edges of the rectangular plate. Mathematical morphology will be used to detect that region. Using Sobel edge detector we used to high light regions with a high edge magnitude and high edge variance are identified. Depending upon the threshold value edge will be detected from the input image. Figure 2.5 shows the input image before applying Sobel edge detection algorithm and figure 2.6 shows after applying the Sobel edge detection method.



Figure: 2.5- Grayscale image after image enhancing

International Journal of Innovative Research in Science, Engineering and Technology

(An ISO 3297: 2007 Certified Organization)

Vol. 5, Special Issue 13, October 2016



Figure: 2.6- After applying Sobel edge detection method.

After edge detection removes all connected components that have lower than p (eight pixel in our method) pixels. Thus it will produce another binary image [2.7].

Algorithm:

1. Determine the connected components.
 $L = \text{bwlabeledn}(BW, \text{conn});$
2. Compute the area of each component.
 $S = \text{regionprops}(L, \text{"Area"});$
3. Remove small objects
 $Bw2 = \text{ismember}(L, \text{find}([S.\text{Area}] \geq p));$

Figure 2.5 shows the shows the input image after removing the connected component fewer than 8 pixels.



Figure: 2.7-After removing lower pixels.

Matlab toolbox function provide a function $\text{imfill}(BW, \text{"holes"})$ that fills holes in the binarized image called BW. The set of background pixels are known as hole that cannot be reached by filling the background from the edge of the image. Figure 2.8 shows after remove lower pixels connected components fills the holes.

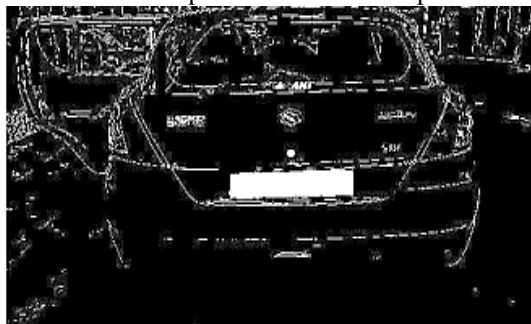


Figure: 2.8- After filling the "holes".

International Journal of Innovative Research in Science, Engineering and Technology

(An ISO 3297: 2007 Certified Organization)

Vol. 5, Special Issue 13, October 2016

Using flood fill algorithm we fill the hole to locate the plate region. Now omitting the lower pixel components to gets the actual plate.

Algorithm:

```

for m=2:p-1
    for n=2:q-1
        if(In(m,n)>0)
            c=Connectivity(H3,m,n);
            if(c>2)
                In(m,n)=1;
            else
                In(m,n)=0;
            end
        end
    end
end
end

```

Connecting edges will be removed in figure 2.9



Figure: 2.9- image after removing components with connectivity less than 1000 pixel

Using Matlab toolbox function `bwareaopen()` that specifies the desired connectivity. All components connectivity lower than 1000 pixel are removed to get the actual location of the number plate [Figure 2.10].



Figure: 2.10- Locate the number plate after morphological filtering.

We output the four vertexes coordinates of the last selected region after morphological filtering and extract the number plate [Figure: 2.11].

International Journal of Innovative Research in Science, Engineering and Technology

(An ISO 3297: 2007 Certified Organization)

Vol. 5, Special Issue 13, October 2016



Figure: 2.11- License plate before crop

The final positioning of the number plate after cropping
[Figure2.12].



Figure: 2.12- The final number plate after the positioning.

F. CHARACTER SEGMENTATION

Matlab toolbox function provides a function called regionprops(). It measures a set of properties for each labeled region in the label matrix. We use boundingbox to measure the properties of the image region. After labeling the connecting components, the region will be extracting from the input image [Figure: 2.13].



Figure 2.13- Segmentation of characters.

IV. EXPERIMENTAL RESULTS

We have run our proposed method on desktop computer with Core2 duo processor 2.26 MHz with 2 GB of RAM under MATLAB 7.14.0.739 R2012a 32-bit(win32) environment. Several vehicle images are captured using 3.2 mega pixel camera as well as 12 mega pixel cameras. In the experiments, we test our proposed method on the different type car image to identify the location accurately.



Fig:3.1-Proper light on cropping.



Fig 3.2-Successful number (license) plate.

International Journal of Innovative Research in Science, Engineering and Technology

(An ISO 3297: 2007 Certified Organization)

Vol. 5, Special Issue 13, October 2016



Figure: 3.3 More lights on background than the numberplate.



Figure: 3.4-Problem in distinguishing the actual plate position due to light.

V. CONCLUSION AND FUTURE WORKS

In this paper, an efficient less time consuming vehicle number plate detection method is proposed which performed on complex image. By using, Sobel edge detection method here detects edges and fills the holes less than 8 pixels only. To extracting the license plate we remove connected components less than 1000 pixels. Our proposed algorithm is mainly based on Indian automobile number plate system. Extraction of number plate accuracy may be increased for low ambient light image.

REFERENCES

- [1] Serkan OZbay and Ergun Ercelebi, "Automatic Vehicle identification by Plate Recognition" World Academy of Science Engineering and Technology, 9, 2005.
- [2] A.S. Johnson, B.M. Bird, 1990, "Number-plateMatching for Automatic Vehicle Identification," IEE Colloquium on Electronic Image and Image Processing in Security and Forensic, April, 1990.
- [3] H.J. Choi, 1987, "A Study on the Extraction and Recognition of a Car Number Plate by Image Processing," Journal of the Korea Institute of Telematics and Electronics, Vol.24, pp. 309-315, 1987.
- [4] Thota Sridevi, Chilukuri Sindhu, Pendyala Naga Praveen Kumar, Perupogu.Sagar, "Morphology based Number Plate Localization for Vehicular Surveillance System", IJMERT, vol.2, issue.2, 2012, pp 334 -337.
- [5] Hanchuan Peng, Fuhui Long, Zheru Chi, "Document Image Recognition Based on Template Matching of Component Block Projection", IEEE Transactions ON pattern Analysis and machine Intelligence, vol 25, No9 september 2003.
- [6] Ch. Jaya Lakshmi, Dr A.Jhansi Rani, Dr. K. Sri Ramakrishna, M.Lantikiran, V.R. Siddhartha, "A novel Approach for Indian License Plate Recognition System", IJAEST, Vol 2 Issue I, 2011, pp 010-014.
- [7] Shokri Gendy, Clifton L.Smith, Stefan Lachowicz, "Automatic Car registration Plate Using Fast Hough Transform", IEEE, 0-7803-3913-4-9/97, 1997, pp 209-218
- [8] P.Anishiya, Prof.S.M ary Joans, "Number Plate Recognition for Indian Cars Using Morphological Dilation and Erosion with the Aid Of OCRs", IACSIT, vol.4, 2011, pp 115-119.
- [9] Hontani, H., and Koga, T., (2001), "Character extraction method without prior knowledge on size and information," Proceedings of the IEEE International Vehicle Electronics Conference (IVEC'01), pp. 67-72.
- [10] Park, S. H., Kim, K. I., Jung, K., and Kim, H. J., (1999), "Locating car license plates using neural network," IEE Electronics Letters, vol.35, no. 17, pp. 1475-1477.
- [11] R. C. Gonzalez, and R. E. Woods and S.I.Eddins Digital Image Processing using MATLAB. Pearson Education, 2008.