

Genetic Identification of Some Clinical Strains of *Enterobacter* from Hospitals' Contamination

Wissal Audah Hassan Alhilfi¹, Khulood Abdulkareem Hussein Al- Tameemi², Maher Thaeer Jassem Alnajafe³

Teacher, Department of Biology, Science College, Basrah University, Basrah, Iraq¹

Assistant Teacher, Department of Medical Science, Nursing College, Basrah University, Basrah, Iraq²

Biologist, Public health lab, Microbiology unit, Misan, Iraq³.

ABSTRACT: Bacterial contamination still as one of the most important medical problems. Six isolates of *Enterobacter* have been studied in this research, taken from public health lab., from Misan province, and identified there by biochemical tests, as primary identification, for the level of genus or species, whereas the applying of PCR technique and sequencing, led to accurate identification till the level of strains.

KEY WORDS: *Enterobacter*, Enterobacteriaceae.

I. INTRODUCTION

The cross- infection from patient to patient or from hospital personnel to patients, represents constant hazards [1].

One of the important causes of contaminations is *Enterobacter*.

According to the authors of [2], it belongs to the family Enterobacteriaceae and has a general features; straight rods, 0.6–1.0 × 1.2–3.0 μm, motile by peritrichous flagella (generally 4–6), Gram negative, facultatively anaerobic and ferment the glucose with production of acid and gas.

Parodiet al [3] reported that *Enterobacter* species are a cause of nosocomial meningitis among neurosurgery patients increasingly, but risk factors for these infections are not well defined.

It had been demonstrated by Thiolaset al [4] that *Enterobacter aerogenes* is an agent of hospital-acquired infection which exhibits a remarkable resistance to β-lactam antibiotics during therapy and among five successive isolates of *E. aerogenes* investigated, four presented resistant phenotypes during successive treatments by imipenem and colistin.

In the study of [5] it had been showed that of 183 patients, 86 (47%) had bacteremia were caused by broad-spectrum cephalosporin-resistant *Enterobacter* species, their infections were classified as resistant.

Fiore et al [6] considered the *Enterobacter sakazakii* as an emerging pathogen connected to neonatal as cases of necrotizing enterocolitis and meningitis due to contaminated powdered infant formula using, and it can also be found in a broad range of foods and in water, in a different of areas including houses and hospitals.

Neonatal nosocomial infections had been reviewed by Mussi-Pinhata and do Nascimento [7] showed that in neonatal intensive care units, sepsis and pneumonia were frequently diagnosed, and listed *Enterobacter cloacae* as one of causes.

For the above importance and others, present study aimed for identification of some *Enterobacter* isolates from hospitals' contamination at genetic level as a confirmation for biochemically routine work at hospitals laboratories.

II. MATERIAL AND METHODS

Isolation and cultivation of bacteria. Swabs have been taken from Public health lab, Microbiology unit, which belong to different places at two hospitals in Misan province, as shown in table (1)

Table (1): Sources and characteristics of samples, showed different places at the 2 selected hospitals.

Isolate number	Hospital	description
E1	Alsader	Artificial kidney/hemodialysis bed 2
E2	Alsader	Burns/room 1/ the ground
E3	Alsader	Premature(pediatrics)/ Incubator 8
E4	Kalaatsalih	Neonatal room/ walls and floor
E5	Kalaatsalih	Neonatal room/ bed
E6	Kalaatsalih	Incubator 1

Blood agar (LAB M, UK) Chocolate agar and MacConky agar (Salucea, Netherlands) have been prepared according to the instructions of manufacturing companies as possible.

Swaps have been cultured on the media and incubated at 35±2°C for 24hr. Different colonies have been sub cultured by streaking for purification [8], [9].

Morphological characterization. Selected colonies have been characterized by shape, color, consistency, size, and fermentation of lactose according to [10], [11]. Gram staining has been done by the following of (Syrbio, Jordan) company instructions.

Biochemical tests. Different biochemical tests have been carried out according to [11]. The API 20E strep (Biomerieux, France) has been applied for more identification according to instructions of manufacturing company.

Genetic identification.

Genomic DNA extraction. Cultures of isolates have been activated on nutrient broth for 18- 24 hr., centrifuged at 7000- 8000 cycle/min. for 10-15 min., washed with distilled water at the same as preparing to the procedure of the genomic DNA mini kit (Geneaid, Taiwan) as possible, with some changes in concentrations and time for the addition materials.

Detection of genomic DNA by gel electrophoresis. Method of electrophoresis by using 0.8% agarose has been done according to Sambrook and Russell [12] as possible due to facilities.

Identification by Polymerase Chain Reaction (PCR). The primers of Lane [13] for 16SrDNA which were B27F(5-AGAGTTTGATCCTGGC-3) and U1492R(5-GGTTACCTGTACGACTT-3) were used in this study, with PCR program selected from [14], as well as adaptation by [15] table (2). The Prokić *et al.* [16] amplification steps were abstracted with little changes.

Table (2): PCR amplification program, showed the steps with their temperatures, times and cycles number.

Step	Temperature	Time	No. of cycle
Initial denaturation	92 °C	2 min	1
Denaturation	94 °C	30 sec	30
Annealing	51.8 °C	45 sec	
Extension	72 °C	1.5 min	
Final extension	72 °C	5 min	1

Detection of 16S rDNA by gel electrophoresis. Agarose of 2% was used as well as the steps of Sambrook and Russell [12] methods in order to detect the 16S rDNA gene, with some differences required.

Purification, sequencing and manipulation of data for PCR product. The obtained product of PCR has been sent for Bioneer Company laboratories/ Korea, for purification and sequencing. Then data have been manipulated.

International Journal of Innovative Research in Science, Engineering and Technology

(An ISO 3297: 2007 Certified Organization)

Vol. 5, Issue 5, May 2016

III. RESULTS

Isolation and cultivation. Six isolates have been selected and identified by biochemical tests and morphological characterization; as found in table (3), three of them have been identified to the level of genus, while the others have been identified to the level of strain.

Table (3): selected isolates with primitive identification, showed different *Enterobacter* genus and species, that were identified by morphological characterization and biochemical tests

Isolatenumber	Name
E1	<i>Enterobactersakazaki</i>
E2	<i>Enterobactercloacea</i>
E3	<i>Enterobactercloacea</i>
E4	<i>Enterobacterspp</i>
E5	<i>Enterobacterspp</i>
E6	<i>Enterobacterspp</i>

Morphological characterization.

Colonies characteristics. Isolates were circular, opaque, convex, smooth, shiny, moderate in size, lactose fermenter.

Gram staining. Staining has shown that isolates are Gram negative rod bacteria.

Biochemical tests. Isolates has showed same results in biochemical tests, which ranged from positive to negative reactions as found in the table (4).

Table (4): Results of manually biochemical tests for isolates, showed same responses to the tests among the different isolates

Test \ Isolate	E1	E2	E3	E4	E5	E6
Indole	-	-	-	-	-	-
Urease	-	-	-	-	-	-
Citrate utilization	+	+	+	+	+	+
Voges- Proskauer	+	+	+	+	+	+
Motility	+	+	+	+	+	+
Catalase	+	+	+	+	+	+
Oxidase	-	-	-	-	-	-

; +: positive, -: negative, E1-E6: number of isolates.

International Journal of Innovative Research in Science, Engineering and Technology

(An ISO 3297: 2007 Certified Organization)

Vol. 5, Issue 5, May 2016

API 20E system: The results of biochemical tests of this system have showed some resembles and differences in the response to the reactions of the tests among different isolates, as shown in the table (5).

Table (5): Results of biochemical tests of API 20E system for isolates, showed some different responses to the tests among the different isolates,

Test \ Isolate	E1	E2	E3	E4	E5	E6
ONPG	+	+	+	+	+	+
ADH	+	+	+	+	+	+
LDC	-	-	-	-	-	-
ODC	+	+	+	+	+	+
CIT	+	+	+	+	+	+
H2S	-	-	-	-	-	-
URE	-	-	-	-	-	-
TDA	-	-	-	-	-	-
INO	-	-	-	-	-	-
VP	+	+	+	+	+	+
GEL	-	-	-	-	-	-
GLU	+	+	+	+	+	+
MAN	+	+	-	+	+	+
INO	+	-	-	-	-	+
SOR	-	+	+	-	+	+
RHA	+	-	-	+	-	-
SAC	+	+	+	+	-	+
MEL	+	+	+	-	-	-
AMY	-	+	+	+	+	+
ARA	-	+	+	+	+	+
OX	-	-	-	-	-	-

; + positive, - negative, E1-E6: number of isolates, ONPG: (Ortho NitroPhenyl-BDGalactopyranosidase ,

ADH: Arginine DiHydrolase, LDC: Lysine DeCarboxylase, ODC: Ornithine DeCarboxylase, CIT: Citrate utilization, H2S: H2S production, URE: Urease, TDA: Tryptophane DeAminase, IND: Indole production, VP: acetoin production (Voges-Proskauer), GEL: Gelatinase, GLU: Fermentation / oxidation (Glucose), MAN: f / o (Mannitol), INO: f / o (Inositol), SOR: f / o (Sorbitol), RHA: f / o (Rhamnose), SAC: f / o (Saccharose), MEL: f / o (Melbiose), AMY: f / o (Amygdalin), ARA: f / o (Arabinose), OX: Cytochrome-Oxidase

Genetic identification.

Genomic DNA extraction and detection. Electrophoresis technique has revealed clear isolated DNA bands for all isolates as found in the figure (1).

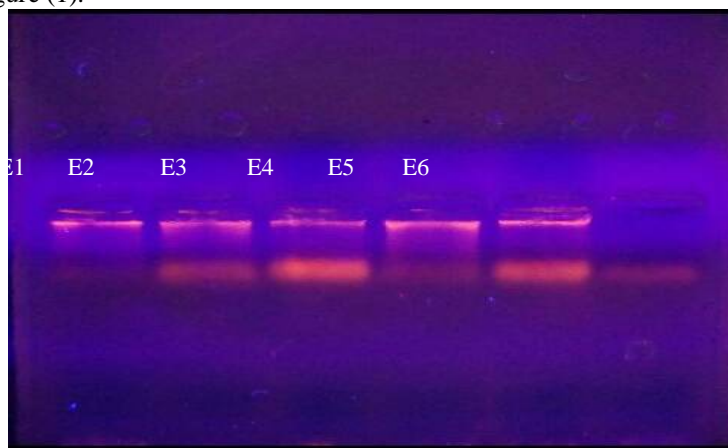


Figure (1): Gel electrophoresis, showed the isolated genomic DNA bands; E1- E6: number of isolates.

Amplifying of the 16S rDNA gene by (PCR) Technique. By using a universal primer, results have obtained the required band of 16S rDNA for each isolates along with electrophoresed ladder in the region of 1500bp, as in the figure (2).

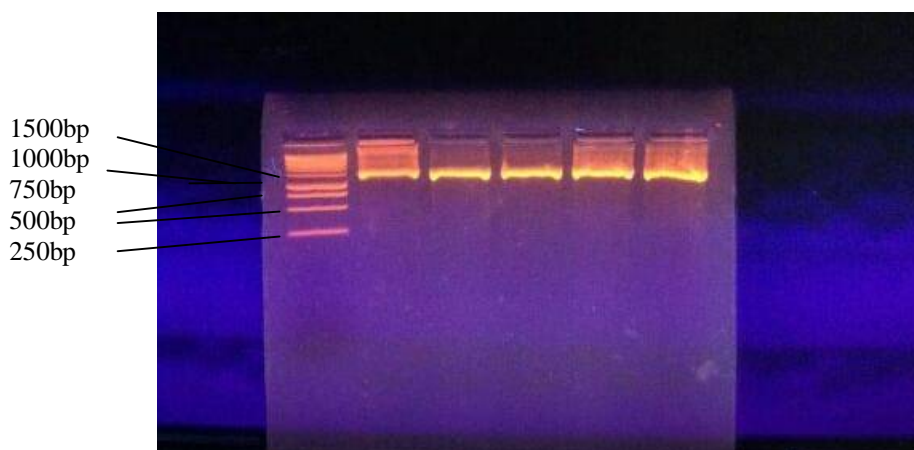


Figure (2): Gel electrophoresis for PCR technique, showed the band of 16s rDNA in all isolates, E1-E5: number of isolates, L: DNA ladder of 1Kb.

Sequencing. The six isolates were identified to the level of strain, as in the table (6).

International Journal of Innovative Research in Science, Engineering and Technology

(An ISO 3297: 2007 Certified Organization)

Vol. 5, Issue 5, May 2016

Table (6): Sequencing of isolates after data manipulation, showed different strain of *Enterobacter*

Isolate	Sequence	Original strain
E1	GNGNCTTAAACATGCAAGTCTGAACGGTAACAGGAAGCAGCT TGCTGCTTTGCTGACGAGTGGCGGACGGGTGAGTAATGTCTG GGAAACTGCCTGATGGAGGGGGATAACTACTGGAAACGGTA GCTAATACCGCATAACGTCGCAAG ACCAAAGAGGGGGACCTTCGGGCCTCTTGCCATCGGATGTGC CCAGATGGGATTAGCTAGTAGGTGGGGTAACGGCTCACCTAG GCGACGATCCCTAGCTGGTCTGAGAGGATGACCAGCCACACT GGAAGTGAACACGGTCCAGACTCCTACGGGAGGCAGCAGT GGGGAATATTGCACAATGGGCGCAAGCCTGATGCAGCCATG CCGCGTGTATGAAGAAGGCCTTCGGGGTGTAAAGTACTTTCA GCGGGGAGGAAGGCGATAAAGTTAATAACCTTGTCGATTGA CGTTACCCGCAGAAGAAGCACCGGCTAACTCCGTGCCAGCA GCCGCGGTAATACGGAGGGTGAAGCGTTAATCGGAATTACT GGGCGTAAAGCGCACGCAGGCGGTCTGTCAAGTCCGGATGTG AAATCCCCGGGCTCAACCTGGGAACTGCATTTCGAAACTGGCA GGCTAGAGTCTTGTAGAGGGGGGTAGAATTCCAGGTGTAG CGGTGAAATGCGTAGAGATCTGGAGGAATACCGGTGGCGAA GGCGCCCCCTGGACACAGAC	<i>Enterobactersaka zakii</i> gene for 16S rRNA
E2	GTNTTANCCCTTGCAGTCTGAACGGTAACAGGAAGCAGCTTGC TGCTTTGCTGACGAGTGGCGGACGGGTGAGTAATGTCTGGGA AACTGCCTGATGGAGGGGGATAACTACTGGAAACGGTAGCT AATACCGCATAACGTCGCAAG ACCAAAGAGGGGGACCTTCGGGCCTCTTGCCATCGGATGTGC CCAGATGGGATTAGCTAGTAGGTGGGGTAACGGCTCACCTAG GCGACGATCCCTAGCTGGTCTGAGAGGATGACCAGCCACACT GGAAGTGAACACGGTCCAGACTCCTACGGGAGGCAGCAGT GGGGAATATTGCACAATGGGCGCAAGCCTGATGCAGCCATG CCGCGTGTATGAAGAAGGCCTTCGGGGTGTAAAGTACTTTCA GCGGGGAGGAAGGCGATAAAGTTAATAACCTTGTCGATTGA CGTTACCCGCAGAAGAAGCACCGGCTAACTCCGTGCCAGCA GCCGCGGTAATACGGAGGGTGAAGCGTTAATCGGAATTACT GGGCGTAAAGCGCACGCAGGCGGTCTGTCAAGTCCGGATGTG AAATCCCCGGGCTCAACCTGGGAACTGCATTTCGAAACTGGCA GGCTAGAGTCTTGTAGAGGGGGGTAGAATTCCAGGTGTAGC GGTGAATGCGTAGAGATCTGGAGGAATACCGGTGGCGAAG GCGGCCCCCTGGACA	<i>Enterobacter cloacae</i> strain EC7
E3	GGCNCCTTTNATGCAAGTCTGAGCGGTAGCACAGGAAGCT TGCTCCCGGTGACGAGCGGCGACAGGGGAGTAATGTCTG GGAAACTGCCTGATGGAGGGGGATAACTACTGTGAACGGGA GCTAATACCCATAACATCGCAAGA GCACAAAGGGGGACCTCCTGGCCCCTTGCCACCTTATGTGCC CCCATGAGATAATTTACTATGAGGGGGGGCATCTCACTCCCT AGACGACGATCCCTTGTGTTGCTAAGAGGAAACCAGCCACT TGTAAGTGAAGTCCCTCCACT CCCACGGACGCTCAATGGGGAATATTGCATTTGCGCGCCAG CCTTATTCACCATGGCTCTTGTGTTAAGAATGCCGGGGGGG GGGGGGGGTCTTTTCATCGTTAGGAAGNGCCAAATTTAATA CCTTGTGGATTGTCCTTCCCGCAA ATACCACCTCTATTTTCTGTCTCCAGCCGCTGTTATCCCG ACGGTGC	<i>Enterobacter cloacae</i> strain GG78
E4	GATGGGCGGCGGCCTACCATGCAGTCGAGCGGCAGCACGAA GTAGCTTGCTCCTTTGCCGCGAGCGGCGGACGGGTGAGTAA	<i>Enterobacterludwigii</i> strain hswX32

International Journal of Innovative Research in Science, Engineering and Technology

(An ISO 3297: 2007 Certified Organization)

Vol. 5, Issue 5, May 2016

	TGCTGGGAACTGCCTGATGGAGGGGGATAACTACTGGAA ACGGTAGCTAATACCGCATAACGTCGCAAGACCAAAGAGGG GGACCTTCGGCCTCTTGCCATCAGATGTGCCAGATGGGAT TAGCTAGTAGGTGGGTAACGGCTCACCTAGGCGACGATCCC TAGCTGGTCTGAGAGGATGACCAGCCACACTGGAAGTGA CACGGTCCAGACTCCTACGGGAGGCAGCAGTGGGGAATATT GCACAATGGGCCAAGCCTGATGCACCCATGCCGCGTGTGTTG AATAAGGCCTTCGGGGTGTAAAGTATTTTCTCCGGGGGGAGA GGGGGTGGGGGTGCAGCACCCGTCGCATAGGTCTCTAACAA GCAAAAACACCCTTGCAA	
E5	CGGCGNNANTNTTNTACCTGACAANTCGAGCGGAAGATG GGAGCTTGCTCCCTGATGTTAGCGGCGGACGGGTGAGTAACA CGTGGGTAACCTGCCTGTAAGACTGGGATAACTCCGGGAAAC CGGGGCTAATACCGGATGCTTGTGTT GAACCCCATGGTTCAAACATAAAAAGGTGGCTTCGGGTACCAC TTACAGATGGACCCGCGGCGCATTAGCTAGTTGGTTAGGTAA TGGCTACCAATGCACACATGCGTATCCTACCAGAGAGGGTG ATCGGCCACACTGGGACTGAGACT CCGCCCACACTCCTGCGGGAGGCAGTAGGTGGAATCTTCCGC AATGGACGAACGTCTGAAGGATCACGCCTGGGGGGGGCTTA CGGTTTTTCAGAGGCTTTTCTCTTTTGTACTTAAAAAGTGTA CGATTCTTTTCGGGGGTGGTCTTG ACCTTCTTTAACCAGTATTTCTTTCATT	<i>Enterobacter cloacae</i> strain TR20T2
E6	TNNGNGGCGCTACCNTGCAGTCGAGCGGATGAGTGGAGCTT GCTCCATGATTACGCGGCGGACGGGTGAGTAATGCCTAGGA ATCTGCCTGGTAGTGGGGACAACGTTTCGAAAGGAACGCTA ATACCGCATAACGTCCTACGGGAGAAA GTGGGGGATCTTCGGACCTCACGCTATCAGATGAGCCTAGGT CGGATTAGCTAGTTGGTGAGGTAAGGCTCACCAAGGCGAC GATCCGTAACCTGGTCTGAGAGGATGATCAGTCACACTGGAAC TGAGACACGGTCCAGACTCCTACGGGAGGCAGCAGTGGGGA ATATTGGACAATGGGCGAAAGCCTGATCCAGCCATGCCGCGT GTGTGAAGAAGGTCTTCGGATTGTAAAGCACTTTAAGTTGGG AGGAAGGGCAGTAAGTTAATACCTTGCTGTTTTGACGTTACC AACAGAATAAGCACCGGCTAACTTCGTGCCAGCAGCCGCGG TAATACGAAGGGTGAAGCGTTAATCGGAATTACTGGGCGTA AAGCGCGCGTAGGTGGTTCGTTAAGTTGGATGTGAAAAGCCCC GGGCTCAACCTGGGAAGTGCATCCAAAAGTGGCGAGCTAGA GTATGGCAGAGGGTGGTGAATTTCTGTGTAGCGGTGAAAT GCGTAGATATAGGAAGGAACACCAGTGGCGAAG	<i>Enterobacterasbu riae</i> strain IHB B 1070

E1-E6: number of isolate, bp: base pairs

IV. DISCUSSION

Nasser *et al*[1] found that *Enterobacter* spp was one of the most prevalent bacterial contaminants of the environment of Intensive Care Unit and the highest rates (19.11%) of contamination by bacteria had been found on the walls and the floor, suggested that could be managed mostly by strict application of sterilization measures.

Jalaluddine *et al*[17] demonstrated that *Enterobacter aerogenes* is a cause of nosocomial infections also, like other members of the family Enterobacteriaceae, and studied the epidemiology of this bacterium because of the incidence in the hospital of Saint-Pierre university in Brussels was higher at 1995 than of the preceding and the following years among the 33 patients, the ratio (1:2) of colonization and infection, as well as (39%) as the high crude mortality rate among the infected patients.

As in agreement with Alhilfi[18], the results of PCR technique in this research showed that amplified region is found in 1500 bp approximately, for all six isolates, because the 16S rDNA appears in this region in all bacteria.

International Journal of Innovative Research in Science, Engineering and Technology

(An ISO 3297: 2007 Certified Organization)

Vol. 5, Issue 5, May 2016

Accurate identification of bacterial isolates in hospitals, is an essential task for the microbiological control, and the analysis of small subunit ribosomal RNA gene (16S rDNA) sequence is usually used for the of bacterial identification and classification [19].

Present study has showed that the compatibility of the biochemical and molecular identification for the three isolates E1, E2 and E3, while the incompatibility appeared for E4, E5 and E6 in which biochemical test couldn't reach to the final identification of the isolates, even for the species, whereas in molecular methods, the isolates have been identified to the strain level. It may be belonged to the high sensitivity and accuracy for the molecular tests, which get in a close agreement with the authors in [20] who concluded that 16S rDNA gene sequencing was useful in ascertaining the clinical relevance of the Enterobacteriaceae strains which isolated from the bone marrow transplant recipient stool with diarrhea.

Whereas Ahmadi et al [21] reported that PCR is less time consuming because it takes less than 24 h to complete while bacterial identification by conventional microbiological and biochemical methods needs for more than 48h.

Patel [22] reported that sequencing of the 16S rDNA gene an important tool for phylogenetic relationships determination between bacteria and it is a powerful mechanism in patients for identifying new pathogens with suspected bacterial disease, and recently is being applied for routine identification of bacterial isolates in the clinical laboratory.

V. CONCLUSION

We have concluded that hospitals might be considered as one of contamination sources by bacteria, especially members of enterobacteriaceae, which may need for more care and attention. On another side there is a necessity in coupling of biochemical tests with molecular technique in order to reach an accurate identification of bacteria.

REFERENCES

- [1] Nasser, N. E.; Abbas, A. T. and Hamed, S. L., "Bacterial contamination in Intensive Care Unit at Al-Imam Al-Hussein Hospital in Thi-qar Province in Iraq", Global Journal of Health Science, Vol. 5, No.1, pp. 143- 149, 2013.
- [2] Grimont, P. A. D. and Grimont, F. (Eds), "Genus XII. Enterobacter" In: Garrity, G.; Brenner, D. J.; Krieg, N. R. and Staley, J. T. (Eds), "Bergey's manual of systematic bacteriology", Second edition, Volume two, part B, Springer, New York, pp. 661, 2005.
- [3] Parodi, S.; Lechner, A.; Osih, R.; Vespa, P. and Pegues, D., "Nosocomial *Enterobacter* Meningitis: Risk factors, management, and treatment outcomes", Clinical Infectious Diseases, Vol. 37, pp.159- 166, 2003.
- [4] Thiolas, A.; Bollet, C.; Scola, B. L.; Raoult, D. and Page's, J.-M., "Successive emergence of *Enterobacter aerogenes* strains resistant to Imipenem and Colistin in a Patient", Antimicrobial Agents and Chemotherapy, Vol. 49, No. 4, 1354-1358, 2005.
- [5] Kang, C.-I.; Kim, S.-H.; Park, W. B.; Lee, K.-D.; Kim, H.-B.; Oh, M.-D.; Kim, E.-C. and Choe, K.-W., "Bloodstream infections caused by *Enterobacter* species: Predictors of 30-day mortality rate and impact of broad-spectrum Cephalosporin resistance on outcome", Clinical Infectious Diseases, Vol. 39, pp. 812- 818, 2004.
- [6] Fiore, A.; Casale, M. and Aureli, P., "*Enterobacter sakazakii*: epidemiology, clinical presentation, prevention and control", Ann Ist Super Sanità, Vol. 44 No. 3, pp.275-280, 2008.
- [7] Mussi-Pinhata, M. M. and Nascimento, S. D., "Neonatal nosocomial infections", Journal de Pediatria, Vol.77, Supl.1, S81-S96, 2001. (Review)
- [8] Grainger, J.; Hurst, J. and Burdass, D. (Eds), "Basic practical microbiology, a manual", The Society for General Microbiolog, UK, pp. 27, 2001.
- [9] Lebofee, M. J. and Pierce, B. E. (Eds), "A photographic atlas for microbiology laboratory", Fourth edition, Morton Publishing Company, USA, pp. 5-6, 2011.
- [10] Al-Hadithi, H. and Al-Saimary, I., "Practical Bacteriology", University of Basrah Press, (In Arabic), pp. 69- 154, Second edition, 1993.
- [11] Tille, P. M. (Ed), "Overview of bacterial identification methods and strategies", In: "Bailey and Scott's Diagnostic Microbiology", Thirteenth edition, Mosby, 193- 231, 2014.
- [12] Sambrook, J. and Russell, D. W. (Eds), "Molecular cloning: A Laboratory manual", Volume1, Third Edition, CSHLpress, 2001.
- [13] Lane, D. J., "16S/23S rRNA sequencing", pp.115-175, (1991). In: Stackebrandt, E. and Goodfellow, M. (Eds), "Nucleic acid techniques in bacterial systematics", Wiley, New York. Cited by: De Long, E. F., "Archaea in coastal marine environments", Proceedings of the National Academy of Sciences of the United States of America, Vol. 89, pp. 5685- 5689, 1992.
- [14] Miyoshi, T.; Iwatsuki, T. and Naganuma, T., "Phylogenetic characterization of 16S rDNA gene clones from Deep-groundwater microorganisms that pass through 0.2-micrometer-pore-size filters", Applied Environmental Microbiology, Vol.71, No. 2, pp.1084-1088, 2005.
- [15] Hussein, K. A. K., "Genetic study of biofilm forming bacteria, isolated from denture and orthodontic devices", MSc. Thesis, College of Science, University of Basrah, pp. 1-198, 2013.
- [16] Prokić, Lj.; Pavličević, M.; Kljujev, I.; Vucelić-Radović, B.; Raičević, V. and Stikić, R., "Laboratory manual application of molecular methods in microbiology, biochemistry and plant physiology", Faculty of Agriculture, University of Belgrade, pp. 7, 2009.
- [17] Jalaluddin, S.; Devaster, J.-M.; Scheen, R.; Gerard, M. and Butzler, J.-P., "Molecular epidemiological study of nosocomial *Enterobacter aerogenes* isolates in a Belgian hospital", Journal of Clinical Microbiology, Vol. 36 No.7, pp.1846-1852, 1998.
- [18] Alhilfi, W. A. H., "Preparation of Biodegradable Polymer of Lactic Acid using Lactic Acid Producing Bacteria", PhD Thesis, College of Education for Pure Sciences, University of Basrah, pp. 61, 2014.

International Journal of Innovative Research in Science, Engineering and Technology

(An ISO 3297: 2007 Certified Organization)

Vol. 5, Issue 5, May 2016

- [19] El Bakkali, M.; Chaoui, I.; Zouhdi, M.; Melloul, M.; Arakrak, A.; Elfahime, E.; El Mzibri, M. and Laglaoui, A., "Comparison of the conventional technique and 16S rDNA gene sequencing method in identification of clinical and hospital environmental isolates in Morocco", African Journal of Microbiology Research, Vol.7, No. 50, pp. 5637-5644, 2013.
- [20] Woo, P. C. Y.; Leung, P. K. L.; Leung, K. W. and Yuen, K. Y., "Identification by 16S ribosomal RNA gene sequencing of an Enterobacteriaceae species from a bone marrow transplant recipient", Journal of Clinical Pathology:Molecular Pathology, Vol. 53, pp. 211–215, 2000.
- [21] Ahmadi, M.; Razavi, R. S. M. and Ayremlou, N., "Evaluation of *Streptococcus agalactiae* detection by PCR in milk and its comparison to other microbiological methods", Iranian Journal of Microbiology, Vol.1, No. 4, pp. 28- 31, 2009.
- [22] Patel, J. B., "16S rRNA gene sequencing for bacterial pathogen identification in the clinical laboratory", Molecular Diagnosis, Vol.6, No. 4, pp. 313- 321, 2001, (Review).