

Recognition of Plant Syndrome Using Image Processing Techniques

S.K.Suriya¹, Dr.V.G Siva Kumar²

PG Scholar, Department of ECE, Sathyabama University, Chennai, Tamilnadu, India¹

Asst Professor, Department of ECE, Sathyabama University, Chennai, Tamilnadu, India²

ABSTRACT: Plant pathologists detect syndromes directly with the naked eye. However, such detection usually requires continuous monitoring, which is time overwhelming and very expensive on large farms. The disease diagnosis is limited by the human's visual abilities because most of the first symptoms are microscopic. Therefore, seeking rapid, automated, economical, and accurate methods of plant syndrome detection is very important. This project deals with the image processing techniques, used to identify and classify the disease symptoms affected on different agriculture crops. Plant diseases are mainly caused by *bacteria*, *fungi*, *virus*, *nematodes*, etc., of which fungi is the main infection causing creature. The magnitude and eminence of plant products gets reduced by plant diseases. The goal is to detect, to categorize and to accurately quantify the main symptoms of plant diseases using the disease affected leaf image by extracting the features like MSERF and SURF of diseased leaf part which is useful for the classification of syndromes.

KEYWORDS: pathologists, syndrome, *nematodes*, msurf and surf features.

I. INTRODUCTION

India is an agronomic country. Farmers have wide range of diversity to handpicked suitable fruit and vegetable crop. Images are captured by digital camera mobile and processed using image processing techniques, then the portion of the leaf sport has been used for the classification purpose for the detection of diseases. Two major steps involved in the reclamation process are feature extraction and classification. Considerable research is carried out in the area to automatically categorize the leaves. MATLAB is being used as a dais for laboratory exercises and the problems modules in the Image Processing partial of the Computer Graphics and Image Processing progress unit. This handout defines the MATLAB development environment you will be using, you are projected to have read it and be conversant with it before endeavoring the Laboratory and Coursework Obligations. The first step in MATLAB image processing is to recognize that a digital image is self-possessed of a two or three dimensional matrix of picture elements. Individual pixels contain a numbers representing what grayscale or color value is allotted to it. Color depictions generally contain three epochs as much statistics as grayscale pictures, depending on what pigment representation structure is used. Therefore, shade pictures take three epochs as much computational power to process. The method for conversion from color to grayscale will be validated and all processing will be done on grayscale images. However, in order to comprehend how image dispensation works, we will begin by analyzing undemanding two dimensional 8-bit matrices. Loading an Image – numerous times you will want to practice a precise image, other times you may just want to experiment a filter on an arbitrary template. If you choose to do this in MATLAB you will need to load the image so you can begin dispensation. If the image that you have is in tint, but color is not imperative for the current solicitation, then you can modify the image to grayscale. This makes dealing out much simpler since then there are only a third of the pixel standards present in the new-fangled image. Color may not be essential in an image when you are trying to localize a specific object that has good contrast with its surroundings. Then the features of the gray scale image are extracted for the further classification.



Fig.1.1 Sample input images

II. RELATED WORK

D. Moshoua, C. Bravo, R. Obertib, J. Westc, on Plant syndrome detection based on data fusion . Kohonen maps are used for hyper and multi-spectral fluorescence imaging, mainly deals with the ground-based real-time remote sensing system for discovering diseases in arable crops under field conditions and in an each stage of syndrome development, before it can visibly detected. This was consummated through sensor fusion of hyper-spectral replication facts between 450 and 900nm and fluorescence imaging. The work explained here used yellow rust (*Puccinia striiformis*) disease of winter wheat as a sculpt system for taxing the featured technologies. Hyper-spectral reflection images of vigorous and infested plants were occupied with an imaging spectrograph under field statuses and ambient lighting circumstances. Multi-spectral fluorescence pictures were taken instantaneously on the same plants using Ultraviolet-blue excitation. Through appraisal of the 550 and 690nm fluorescence images, it was probable to detect disease existence. The fraction of pixels in one image, foreseeable as diseased, was set as the final fluorescence infection variable called the lesion index (LI). A haunted reflection method, centered on only three wavebands, was recognized that could discriminate disease from healthy with an largely burden of concerning 11.3%. The method based on fluorescence was less accurate with an overall refinement error of about 16.5%.

E. Nurnadiaha, W. Aimrun, M.S.M. Amina, A.S. Idris on Preliminary Study on Detection of Basal Stem Rot (BSR) Disease at Oil Palm Tree by means of Electrical Resistance, BSR disease affects oil palm in Malaysia instigated by *Ganoderma boninense* which resulted in the devastation of basal tissues of the place in the ground. The study was aimed to notice an infected tree by with electrical resistance (ER). LandMapper ERM-2 was used to distinguish the diseases by assembling ER data at eight positions neighboring the trunk at three different levels of height for each tree. Tree which is contaminated gives low ER measurements between 0Ω to 24.9Ω while for the in fine fettle tree have 25Ω to 150Ω.

Reza Ghaffari, Fu Zhang, Daciana Iliescu, Mark Leeson, Richard and John Clarkson Early Detection of Diseases in Tomato Crops: An Automated racket and Intelligent system Approach Abstract— Sensor arrays also known as Electronic Noses (ENs) have been worn to visualize the Volatile Organic Compounds (VOCs) of both strong and infected tomato (*Solanum lycopersicum*) crops. Statistical and intellectual systems techniques were engaged to process the data collected by an EN. K-Means clustering and Fuzzy C-Mean (FCM) clustering were practical to evaluate any clusters within the dataset. In addition, Multi-Layer Perceptron model in AAN and Radial Basis Function (RBF) based Artificial Neural Network (ANNs) were charity to acquire to pigeon-hole and hence categorise the datasets. With the RBF, MLP and LVQ techniques were reached upto 94, 96 and 98% arrangement accuracy for the healthy, powdery mildew (*Oidium lycopersicum*) and spider mite diseased plants respectively.

Arti N. Rathod, Bhavesh Tanawal, Vatsal Shah on Image Processing Techniques for Detection of Leaf Disease, In agriculture research of involuntary leaf infection detection is essential research subject as it may provide evidence benefits in perceiving large pitches of crops, and thus automatically perceive symptoms of syndrome as soon as they give the impression on plant vegetation. The term syndrome is usually used only for devastation of live shrubberies. This paper provides various approaches used to study of leaf disease detection using image processing. The methods are recycled for increasing output and reduction subjectiveness arising from human experts in detecting the leaf disease. Digital image handling is a technique used for amelioration of the image. To improve agricultural products instinctive detection of symptoms is beneficial.

III. PROPOSED WORK

IMAGE PROCESSING TECHNIQUES

COLOR IMAGE TO GRAY

First, the image is converted to the grayscale image. The function of $G = \text{rgb2gray}(Z)$ is used to convert into the grayscale image. Then, the intensity of image is adjusted by calling function that specifies the lower and upper picture elements each of one percent that are used for dissimilarity stretching the grayscale image.

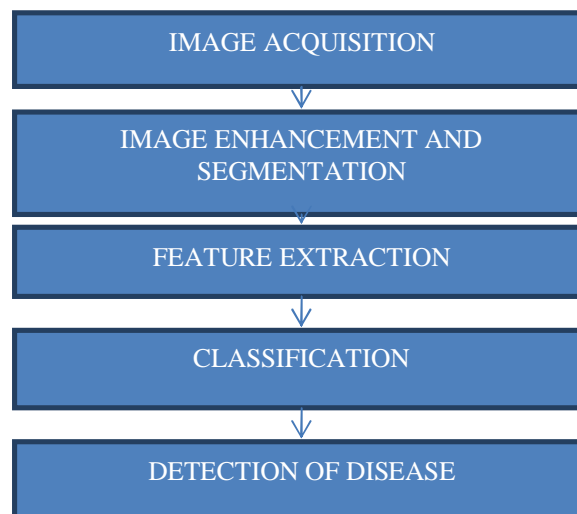


Fig.3.1 Work flow

THRESHOLDING

The simplest approach to segment an image is using thresholding. To make segmentation more robust, the threshold should be automatically preferred by the system. Knowledge about the objects, the relevance, the impression should be used to desire the threshold automatically:

$BW = \text{im2bw}(R, \text{level})$ converts the grayscale image R to a binary image. The output image BW interchanges all pixels in the key representation with luminance greater than level with the value 1 (white) and replaces all other pixels with the value 0 (black). level is in the range $[0,1]$. This range is proportional to the signal levels possible for the image's class. Therefore, a level assessment of 0.5 is equidistant between black and white, regardless of class. To estimate the level dispute, you can exploit the function `graythresh`. If you do not stipulate level , `im2bw` uses the value 0.5.

FILTERING IMAGE

Median filtering is a nonlinear method used to remove noise from images. It is widely used as it is very effective at eliminating noise while preserving edges. It is particularly operational at removing 'salt and pepper' type blare. The median filter works by poignant through the reflection pixel by pixel, replace each value with the nucleus value of bordering pixels. The blueprint of neighbors is called the "window", which slides, pixel by way of pixel over the all-inclusive image2pixel, image. The median is calculated by first cataloging all the pixel values from the window into arithmetic order, and then exchanging the pixel being deliberated with the middle (median) pixel value.

A median filter is more operative than convolution when the goal is to concurrently reduce blare and preserve edges. $B = \text{medfilt2}(I, [m \ n])$ implements median filtering of the milieu I in two measurements. Each output pixel contains the median value in the m -by- n communal around the equivalent pixel in the input image. Medfilt2 waddings the image with 0s on the edges, so the norm values for the point within $[m \ n]/2$ of the edges might appear inaccurate. $B = \text{Medfilt2}(A)$ achieves median filtering of the matrix A using the defaulting 3-by-3 locality. $B = \text{medfilt2}(A, 'indexed', \dots)$ processes A as an indexed image, wadding with 0s if the category of A is uint8, or 1s if the class of A is double = $\text{medfilt2}(\dots, \text{padopt})$ gear stick how the matrix margins are padded. padopt may be 'zeros' (the default), 'symmetric', or 'indexed'. If padopt is 'symmetric', A is correspondingly prolonged at the boundaries. If padopt is 'indexed', A is padded with ones if it is twice over; otherwise it is padded with zeros.

3.2.4 MORPHOLOGICAL METHODS

Morphology is a broad set of image processing maneuvers that process images based on shapes. Morphological operations apply a structuring element to an input illustration, creating an productivity image of the equivalent size. In a morphological operation, the value of each pixel in the harvest image is based on a judgment of the corresponding pixel in the input image with its neighbors. By indicating the size and shape of the neighborhood, you can create a morphological operation that is sensitive to unambiguous shapes in the participation image. The most basic morphological operations are dilation and erosion. Dilation increases pixels to the restrictions of objects in an illustration, while erosion eliminates pixels on object restrictions. The number of pixels added or impassive from the stuffs in an image depends on the size and shape of the structuring element used to development the image. In the morphological dilation and erosion operations, the state of any specified pixel in the output representation is determined by applying a rule to the analogous pixel and its neighbors in the input image. The regulation used to process the pixels defines the maneuver as a dilation or an erosion.

- The input image to be administered (grayscale, binary, or packed binary image).
 - A structuring constituent object, reimbursed by the structural element function, or a binary matrix describing the neighborhood of a constituting element
- imdilate also accepts two optional influences: SHAPE and PACKOPT. The SHAPE disputedisturbs the size of the output image. The PACKOPT argument make certain the input image as packed dualistic. (Packing is a method of constricting binary images that can speed up the dispensation of the appearance).

3.2.5 FEATURE EXTRACTION AND CLASSIFICATION

3.2.5.SUR FEATURES

SURF is a stout local article detector, and can be used in computer vision responsibilities like object recognition or 3D restoration. It is partly inspired by the SIFT descriptor. Therefore, harmoniously to SIFT algorithm, the feature point revealing of SURF set of rules still is based on scale space principle. In contrast, SIFT algorithm embraces Difference of Gaussians (DoG) to extract feature-points, while SURF uses an integer evaluation as the element of Hessian blob detector, which can be computed tremendously quickly with an integral image. As for a pixel point with scale in image. In order to speed up the multiplication in SIFT algorithm, the Box riddle is used to in the region of substitute the Gaussian filter. In addition, SIFT algorithm simplify the reckoning of determinant, which no longer gauges the weight of each region unconnectedly, thus the determinant can be obtained. Due to the use of fundamental image and the Box filter, the size of the filter is only transformed in the scale-space accumulated by the SURF algorithm, while the image size is perpetual. In contrast, the clarified

image is unrelenting to be riddled in SIFT filtering algorithm. SURF algorithm rulerintergalactic is divided into several orders, and each order encirclements a number of layers. Commonly speaking, the numeral of orders is set to four, each order has four layer scale images, where the bottom image of each regulate is creative image. The size of the filter in each layer is $ij \cdot 2$, where i is the order of the image and j is the layer of the doppelgänger. For occurrence, the strainer sizes of the first-order image are 9,15,21,27, respectively.

The transformed value of the bulk is only 6 in the first mandate, while the different in other order is 12, 24, and 48. The consistent scale of each image is $s \cdot 2$, where s is the side length of the filter in the existing image. After the deviousness of the Hessian matrix determinant is obtained in each layer, the non-maximum dominance is performed in neighborhood. Therefore, the point can be nominated as a feature argument when only the value of the current point is bigger (smaller) than the value of 26 points everywhere the pixel. Because the Box filter is used to approximately exchange the Gaussian filter and integral image is used to fast-track the incorporation process, it is probable to improve the swiftness of operation in the case of high accuracy.

3.2.5.2 MSER FEATURES

MSER is a method for blob detection in images. The MSER algorithm abstracts from an image a quantity of co-variant regions, called MSERs: an MSER is a stable attached constituent of some gray-level sets of the image. MSER is based on the idea of taking regions which stay nearly the equivalent through a wide assortment of thresholds.

Altogether the pixels below a given threshold are white and all those upstairs or equal are black. If we are shown a categorization of thresholded images. It with frame corresponding to beginning, we would perceive first a black image, then white adverts corresponding to local intensity smidgens will appear then grow grander. These white adverts will eventually amalgamate, until the whole image is white.

The set of all connected apparatuses in the sequence is the conventional of all extremal regions. Optionally, elliptical frames are fervently involved to the MSERs by fitting contractions to the regions. Those regions descriptors are retained as features.

The term extremal refers to the property that every picture elements inside the MSER have either advanced (bright extremal regions) or subordinate (dark extremal regions) concentration than all the pixels on its outer borderline. This operation can be achieved by first categorization all pixels by gray value and then incrementally adding pixels to each associated component as the threshold is transformed.

Over a large assortment of inceptions the local binarization is constant and shows some invariance to affine transformation of image intensities and scaling.

MSER performs well on images containing homogeneous regions with distinctive boundaries.

- MSER works well for trivial regions.
- MSER doesn't work well with images with any gesticulation blur.
- Multi-resolution MSER affords better robustness to large measure changes and blurred images and progresses matching performance over large scale changes and for blurred images.
- Worthy repeatability.
- Affine invariant.
- A smart implementation makes it one of the fastest constituency detectors

3.2.6 CLASSIFICATION

Classification is done by comparing the values of area, perimeter and centroid values

For calculating the perimeter of a binary image, $BW2 = bwperim(BW1)$ returns a binary image encompassing only the perimeter pixels of objects in the input image $BW1$. A pixel is part of the perimeter if it is nonzero and it is associated to at least one zero-valued picture elements. The default connectivity is 4 for two dimensions, 6 for three measurements and $conn = conndef(ndims(BW), 'minimal')$ for higher dimensions. $BW2 = bwperim(BW1, conn)$ specifies the desired connectivity. For calculating the area of a binary image, $total = bwarea(BW)$ assessments the area of the substances in dualistic image BW . $total$ is a scalar whose value corresponds jaggedly to the total number of on pixels in the image

IV.RESULT AND DISCUSSION

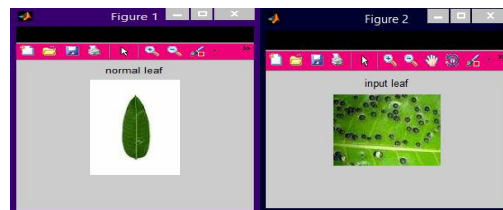


Fig.3.1.Input images

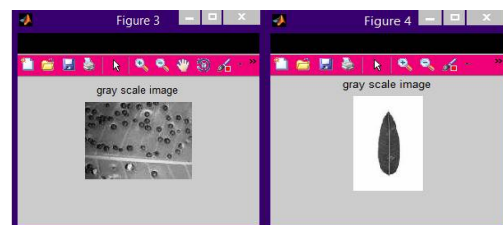


Fig.3.2 Grayscale images

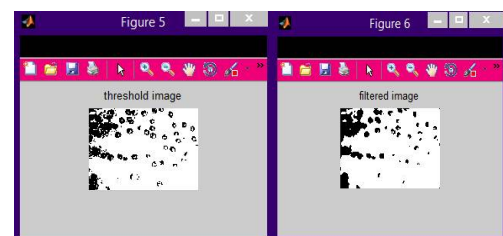


Fig.3.3Threshold and filtered image

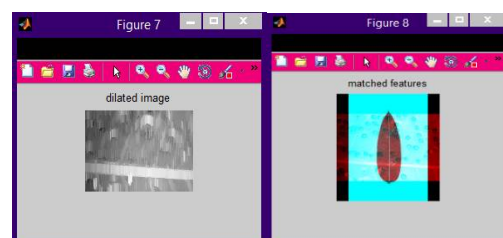


Fig.3.4 Dilation and matched features

MSERF AND SURF FEATURES EXTRACTED

For normal leaf:

71x1 MSER Regions array with properties:

Count: 71

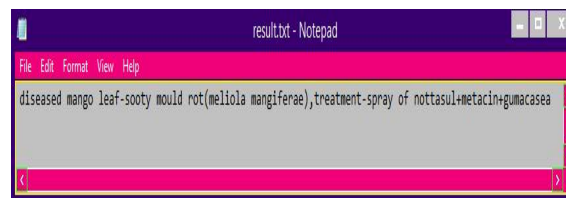
Location: [71x2 single]

Axes: [71x2 single]

Orientation: [71x1 single]

PixelList: {71x1 cell}
For diseased leaf:
5x1 MSER Regions array with properties:
Count: 5
Location: [5x2 single]
Axes: [5x2 single]
Orientation: [5x1 single]
PixelList: {5x1 cell}

OUTPUT IN TEXT FILE



V.CONCLUSION

In this paper we describe our work bothered with the perception between vigorous and diseased plant leaf using an features extracted from the diseased leaf part. By calculating the area, centroid and perimeter of the diseased leaf part and features like MSERF(Maximal Stable Extremal regions) and SURF(speeeded up robust) are extracted and compared. The diseased plant leaves are classified based on the extracted features and then the diseases with their treatments are displayed in the form of text file.

REFERENCES

- [1]André Kessler, Ian T. Baldwin, "Defensive Function of Herbivore- Induced Plant Volatile Emissions in Nature", Science 16 March 2009;Vol. 291. no. 5511, pp. 2141 – 2147.
- [2] Baldwin .T, André Kessler and RaykoHalitschke, "Volatile signaling in plant–plant–herbivore interactions: what is real?", Current Opinion in Plant Biology, Volume 5, Issue 4, 1 August 2012, Pages 351-354.
- [3]Camargo .A and Smith J.S, "An image-processing based algorithm to automatically identify plant disease visual symptoms", BiosystemsEngineering, Volume 102, Issue 1, January 2009, Pages 9-21.
- [4] ElhamOmraní a, Benyamin Khoshnevisan a, ShahaboddinShamshirband b,ñ, HadiSaboohic,NorBadrulAnuar d, MohdHairulNizamMdNasir e Potential of radial bias function based vector regression for apple diseases detection, Measurement 55(IEEE 2014).
- [5]Holopainen J.K., "Multiple functions of inducible plant volatiles", Trends in Plant Science, Volume 9, Issue 11, November 2004, Pages 529-533.
- [6] In-Kyung Kim, A.M. Abd El-Aty, Ho-Chul Shin, HyangBurm Lee, In-Seon Kim and Jae-Han Shim, "Analysis of volatile compounds in fresh healthy and diseased peppers (Capsicum annuum L.) using solvent free solid injection coupled with gas chromatography-flame ionization detector and confirmation with mass spectrometry", Journal of Pharmaceutical and Biomedical Analysis, Volume 45, Issue 3, 5 November 2007, Pages 487-494.
- [7]Moalemiyan .M, Vikram .A, and Kushalappa .A.C, "Detection and discrimination of two fungal diseases of mango (cv. Keitt) fruits based on volatile metabolite profiles using GC/MS", Postharvest Biology and Technology, Volume 45, Issue 1, July 2007, Pages 117-125.
- [8] NiketAmoda, Bharat Jadhav, Detection and classification of plant disease using image processing, vol. 1 Issue 2, April 2014.
- [9] Reza Ghaffari; Fu Zhang; Daciana Iliescu, Evor Hines; Mark Leeson, Richard Napier and Johnn Clarkson on Early Detection of Diseases in Tomato Crops: An Electronic Nose and Intelligent Systems Approach 978-1-4244-8126-2/10/\$26.00 ©2010 IEEE.
- [10] Schütz .S, Weißbecker .B and Hummel .H.E, "Biosensor for volatiles released by damaged plants", Biosensors and Bioelectronics, Volume 11, Issue 4, 2007, Pages 427-433.
- [11] Yialouris .C.P and Sideridis .A.B., "An expert system for tomato diseases", Computers and Electronics in Agriculture Volume 14, Issue 1, January 2011, Pages 61-76.