

# Kidney Based Disease Identification Using Automatic 3D Segmentation

R. Suganya<sup>1</sup>, S. Rethinavelan<sup>2</sup>

M.E. Computer Science and Engineering, Shanmuganathan Engineering College, Arasampatti, Pudukkottai-622507, India.

Assistant Professor, Department of Computer Science and Engineering, Shanmuganathan Engineering College, Arasampatti, Pudukkottai-622507, India.

**ABSTRACT:** Kidney is consisted of four different structures with different functions. That is renal cortex, renal column, renal medulla and renal pelvis. Different kidney diseases affect different part of kidney. For example, kidney tumor usually occurs in renal cortex, renal column hypertrophy may exist in renal column, medullar cystic kidney disease usually exists in renal medulla, and transitional cell cancer, renal pelvis and ureter cancer may attack renal pelvis. To proposed a fast fully automatic method for kidney components segmentation. The proposed method consists of two main parts: localization of renal cortex and segmentation of kidney components. In the localization phase, a fast localization method which effectively combines 3D GHT and 3D AAM is proposed, which utilizes the global shape and texture information. In the segmentation phase, a modified RF method and a cortex thickness model are proposed to efficiently accomplish the multi-structure segmentation task. Finally obtain the diseases in kidney.

**KEYWORDS:** Renal Column, Renal Medulla, Renal Pelvis, Generalized Hough Transform, Kidney, Renal Cortex, Active Appearance Models, Random Forests..

## I. INTRODUCTION

Medical imaging is the method and strategy of making visual exhibition of the inward of a body for trial investigation and wellbeing mediation. Medical imaging searches out to reveal interior structures covered up by the skin and bones, and additionally to analyze and treat infection.

Restorative imaging likewise sets up a database of typical life systems and physiology to make it conceivable to distinguish irregularity. Despite the fact that imaging of evacuated organs and tissues can be performed for medicinal reasons, such techniques are typically considered some portion of pathology rather than restorative imaging. As a train and in its vastest sense, it is a piece of natural imaging and consolidates radiology which utilizes the imaging advances of X-beam radiography, attractive reverberation imaging,

Medical ultrasonography or ultrasound, endoscopy, elastography, material imaging, thermography, restorative photography and pharmaceutical useful procedures as positron discharge tomography. In the clinical setting, "impalpable light" Medical imaging is for the most part partner to radiology or "medicinal imaging" and the restorative specialist in charge of comprehension (and here and there gaining) the pictures are a radiologist. "Obvious light" medicinal imaging includes computerized video or still pictures that can be seen without uncommon gear. Dermatology and wound care are two modalities that utilization obvious light symbolism. Symptomatic radiography assigns the specialized parts of medicinal imaging and specifically the securing of Medical pictures.

The radiographer or radiologic technologist is typically in charge of obtaining Medical pictures of analytic quality, albeit some radiological intercessions are performed by radiologists. As a field of logical examination, Medical imaging constitutes a sub-teach of designing, restorative or drug contingent upon the specific circumstance: Research and improvement in the zone of instrumentation, picture securing (e.g. radiography), demonstrating and measurement are typically the protect of biomedical designing, restorative material science, and software engineering;

# International Journal of Innovative Research in Science, Engineering and Technology

(An ISO 3297: 2007 Certified Organization)

Website: [www.ijirset.com](http://www.ijirset.com)

Vol. 6, Issue 2, February 2017

Research into the application and understanding of medicinal pictures is generally the save of radiology and the Medical sub-teach important to restorative condition or region of medicinal science (neuroscience, cardiology, psychiatry, brain science, and so forth.) under scrutiny.

## II. IMAGE PROCESSING

Image preparing and processing is a strategy to change over a Image into advanced frame and play out a few operations on it, so as to get an upgraded Image or to concentrate some valuable data from it. It is a kind of flag allotment in which information is Image, similar to video edge or photo and yield might be Image or qualities related with that Image. Generally Image Processing framework incorporates regarding Images as two dimensional signs while applying effectively set flag handling techniques to them. It is among quickly developing innovations today, with its applications in different parts of a business. Image Processing frames center research zone inside designing and software engineering disciplines as well.

*Image preparing fundamentally incorporates the accompanying three stages.*

- Bringing in the Image with optical scanner or by computerized photography.
- Examining and controlling the Image which incorporates information pressure and Image upgrade and spotting designs that are not to human eyes like satellite photos.
- Yield is the last stage in which result can be adjusted Image or report that depends on Image examination.

### Purpose of Image Processing

The purpose of image processing is divided into 5 groups. They are:

- **Visualization** - Observe the objects that are not visible.
- **Image Sharpening And Restoration** - To create a better image.
- **Image Retrieval** - Seek for the image of interest.
- **Measurement of Pattern** - Measures various objects in an image.
- **Image Recognition** - Distinguish the objects in an image.

### Strategies and its Types

The two Types of strategies utilized for Image Processing are Analog and Digital Image Processing. Simple or visual strategies of picture preparing can be utilized for the printed versions like printouts and photos. Picture investigators utilize different essentials of translation while utilizing these visual systems. The picture handling is not quite recently restricted to zone that must be contemplated yet on information of examiner. Affiliation is another critical apparatus in picture preparing through visual methods. So examiners apply a blend of individual information and insurance information to picture preparing. Computerized Processing procedures help in control of the advanced pictures by utilizing PCs.

As crude information from imaging sensors from satellite stage contains insufficiencies. To get over such defects and to get inventiveness of data, it needs to experience different periods of preparing. The three general stages that a wide range of information need to experience while utilizing advanced system are Pre-preparing, upgrade and show, data extraction.

### Execution Considerations

Medical imaging is frequently seen to assign the arrangement of systems that noninvasively create pictures of the inside part of the body. In this limited sense, therapeutic imaging can be viewed as the arrangement of numerical converse. This implies cause (the properties of living tissue) is surmised from impact (the watched flag). On account of restorative ultrasonography, the test comprises of ultrasonic weight waves and echoes that go inside the tissue to demonstrate the interior structure. On account of projection radiography, the test utilizes X-beam radiation, which is assimilated at various rates by various tissue Types, for example, bone, muscle and fat.

The term noninvasive is utilized to indicate a strategy where no instrument is brought into a patient's body which is the situation for most imaging methods utilized. The MIPAV (Medical Image Processing, Analysis, and

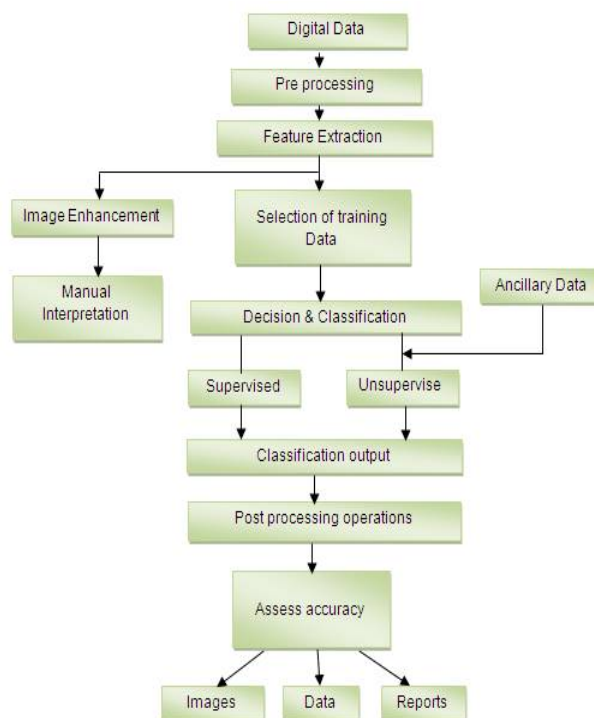
# International Journal of Innovative Research in Science, Engineering and Technology

(An ISO 3297: 2007 Certified Organization)

Website: [www.ijirset.com](http://www.ijirset.com)

Vol. 6, Issue 2, February 2017

Visualization) application empowers quantitative examination and representation of restorative pictures of various modalities, for example, PET, MRI, CT, or microscopy. Utilizing MIPAV's standard UI and examination apparatuses, analysts at remote locales (by means of the web) can without much of a stretch share inquire about information and investigations, in this manner upgrading their capacity to explore, analyze, screen, and treat restorative issue. MIPAV is a Java application and can be keep running on any Java-empowered stage, for example, Windows, UNIX, or Macintosh OS X.



**Fig.1. Image Processing Structure**

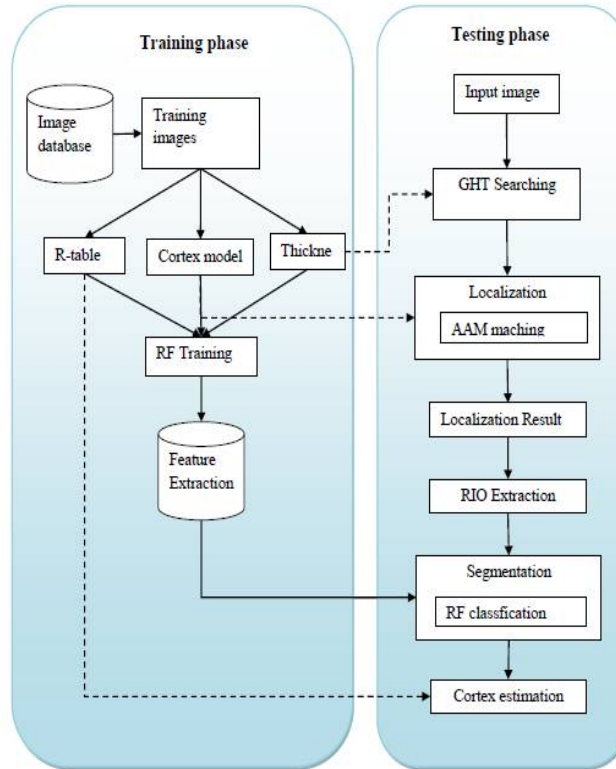
Propels in data innovation and media communications have gone about as impetuses for huge improvements in the area of social insurance.

These innovative advances have had an especially solid effect in the field of medicinal imaging, where film radiographic strategies are slowly being supplanted by computerized imaging procedures, and this has given a driving force to the improvement of coordinated clinic data frameworks and incorporated teleradiology administrations systems which bolster the computerized transmission, stockpiling, recovery, investigation, and elucidation of appropriated sight and sound patient records.

One of the many included esteem benefits that can be given over a coordinated teleradiology administrations system is access to superior figuring offices with a specific end goal to execute computationally concentrated image examination and perception undertakings.

By and large, at present accessible items in the field of image handling meet just particular needs of various end client bunches. They either intend to give an extensive pool of prepared to utilize programming inside an easy to use and application particular interface for those clients that utilization IP programming, or go for the specific IP scientist and engineer, offering software engineer's libraries and visual dialect apparatuses.

The regular system that will incorporate every single earlier exertion and advancements in the field and in the meantime give included esteem highlights that support and basically acknowledge what we call an 'administration'.



**Fig.2. System Architectural Design**

On account of image handling, these components include: computational asset administration and insightful execution booking; savvy and adjustable instruments for the depiction, administration, and recovery of image preparing programming modules; systems for the "attachment and-play" reconciliation of officially existing heterogeneous programming modules; simple get to and client straightforwardness as far as programming, equipment, and system advances; complex charging components in light of nature of administration; and, techniques for the coordination with different administrations accessible inside an incorporated wellbeing telemetric organize.

### III. EXISTING SYSTEM

The most existed methods only analyzed volume and morphology of whole kidney or renal cortex. The correlation between volumes of kidney components and other biomarkers like serum creatinine, glomerular filtration rate (GFR) and effective renal plasma flow (ERPF) can be analyzed. The Serum creatinine, GFR and ERPF are important biomarkers to evaluate kidney function. The correlation between volume of kidney and these biomarkers can provide both kidney anatomy and function information. It is important for clinical application, such as evaluation of potential kidney donors and prediction of recipient renal function. Disease diagnosis, postoperative assessment and other clinical application can benefit from our proposed method. Beside kidney segmentation, our proposed method can be also used to segment other organ with complex structure, such as heart and brain. Kidney components segmentation is a challenging task due to the following reasons: the anatomical structures of kidney are complex, which consists of four major structures: renal cortex, renal column, renal medulla and renal pelvis, as shown , the renal cortex and renal column are connected and have similar intensity; the renal pelvis consists of several different structures with different intensities. The boundaries between kidneys and adjacent organs such as spleen and liver are usually blurred.

# International Journal of Innovative Research in Science, Engineering and Technology

(An ISO 3297: 2007 Certified Organization)

Website: [www.ijirset.com](http://www.ijirset.com)

Vol. 6, Issue 2, February 2017

## IV. PROPOSED SYSTEM

A fast fully automatic kidney segmentation method that can segment the kidney into four components: renal cortex, renal column, renal pelvis and renal medulla. Dataset 1 was acquired from subjects who donated their left kidney. By this method, the volume change of the four renal components of the remaining kidney before and after donation is analyzed. It is essential for kidney function evaluation.

Dataset 2 was acquired from a completely different CT system for both normal subjects and abnormal subjects. Dataset 2 was used to validate the robustness of the proposed method. To the best of our knowledge, this study is the first work that segments the kidney into four components. The proposed method consists of two parts: localization of renal cortex and segmentation of kidney components. In localization of renal cortex, the Active Appearance Model (AAM) method is used. The AAM is widely used in computer vision such as face recognition and organ localization. Extended the AAM to three dimensions and tested it on Cardiac MR and Ultrasound Images. However, conventional AAM searches the whole image which is inefficient especially for large volume image. Hough Transform (GHT) and 3D AAM.

The 3D GHT can find the center of gravity of kidney efficiently. Then AAM searches around the center of gravity of kidney instead of the whole image. This combination improves the accuracy and efficiency of AAM. In segmentation of kidney components, the random forests method is used. The random forests method was first proposed by Breiman. Feature selection and weighted voting are applied to overcome these problems for kidney component segmentation. Furthermore, we apply the multithreading technology to speed up the segmentation process.

## V. LITERATURE SURVEY

In the year of 2015 the author Souleymane Balla described into their paper titled "A Fast and Robust Level Set Method for Image Segmentation Using Fuzzy Clustering and Lattice Boltzmann Method" such as the LSM, the movement of the zero level set is actually driven by the level set equation (LSE), which is a partial differential equation (PDE). For solving the LSE, most classical methods such as the upwind scheme are based on some finite difference, finite volume or finite element approximations and an explicit computation of the curvature. Unfortunately, these methods cost a lot of CPU time. Recently, the lattice Boltzmann method (LBM) has been used as an alternative approach for solving LSE. It can better handle the problem of time consuming because the curvature is implicitly computed and the algorithm is simple and highly parallelizable.

The LBM is used to solve the LSE. The proposed method is based on the approach of the LBM PDE solver defined. In the proposed method, using a modified FCM objective function, we design a new fuzzy external force (FEF). The method is fast, robust against noise, and efficient whatever the position or the shape of the initial contour and can detect efficiently objects with or without edges.

In the year of 2013 the authors David Lesage, Remi Cuingnet and Raphael Prevost described into their paper titled "Automatic Detection and Segmentation of Kidneys in 3D CT Images Using Random Forests" such as Segmentation of medical images is a key step to gathering anatomical information for diagnosis or interventional planning. Renal volume and perfusion, which can be extracted from CT images, are typical examples for nephrologists.

However, it is often long and tedious for clinicians to segment 3D images. Automatic and fast segmentation algorithms are thus needed for practical use. It is yet still challenging to design an algorithm robust enough to noise, acquisition artifacts or leakages in neighboring organs. Kidney segmentation in 3D CT images allows extracting useful information for nephrologists. For practical use in clinical routine, such an algorithm should be fast, automatic and robust to contrast agent enhancement and fields of view. By combining and refining state-of-the-art techniques (random forests and template deformation), we demonstrate the possibility of building an algorithm that meets these requirements. Kidneys are localized with random forests following a coarse-to-fine strategy.

In the year of 2013 the authors Cheng Chen and Guoyan Zheng described into their paper title "Fully Automatic Segmentation of AP Pelvis X-rays via Random Forest Regression and Hierarchical Sparse Shape Composition" such as Segmenting anatomical regions such as the femur and the pelvis is an important task in the analysis of conventional 2D X-ray images, which benefits many applications such as disease diagnosis, operation

# International Journal of Innovative Research in Science, Engineering and Technology

(An ISO 3297: 2007 Certified Organization)

Website: [www.ijirset.com](http://www.ijirset.com)

Vol. 6, Issue 2, February 2017

planning/intervention, 3D reconstruction and so on. Traditionally, manual segmentation of X-ray images is both time-consuming and error-prone. Therefore, automatic methods are beneficial both in efficiency and accuracy. However, automatic segmentation of X-ray images face many challenges. Occlusions such as the overlap between bones make it difficult to identify local features of bone contours. Furthermore, the existence of implants drastically interferes with the appearance. Therefore, conventional segmentation techniques, which mainly depend on local image features such as the edge information, cannot provide satisfactory results, and model based segmentation techniques are often adopted.

## VI. EXPERIMENTAL RESULTS

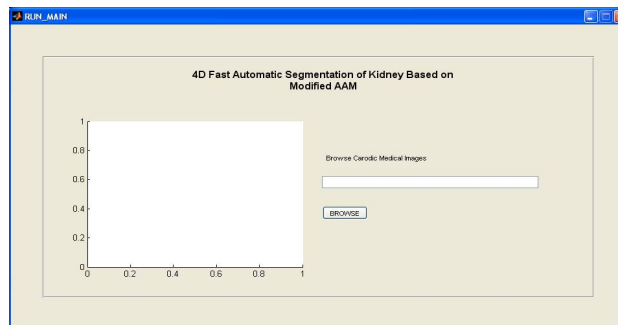


Fig.3. Home Page Design

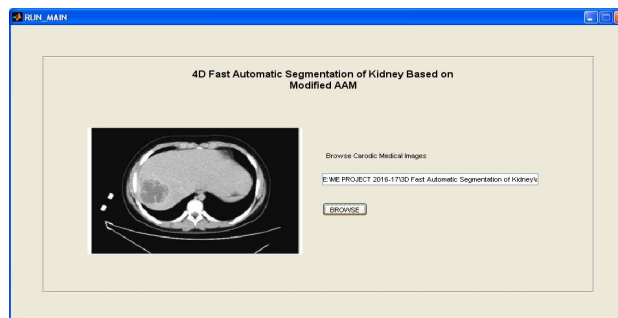


Fig.4. Image Segmentation



Fig.5. Segmented Kidney Image

# International Journal of Innovative Research in Science, Engineering and Technology

(An ISO 3297: 2007 Certified Organization)

Website: [www.ijirset.com](http://www.ijirset.com)

Vol. 6, Issue 2, February 2017

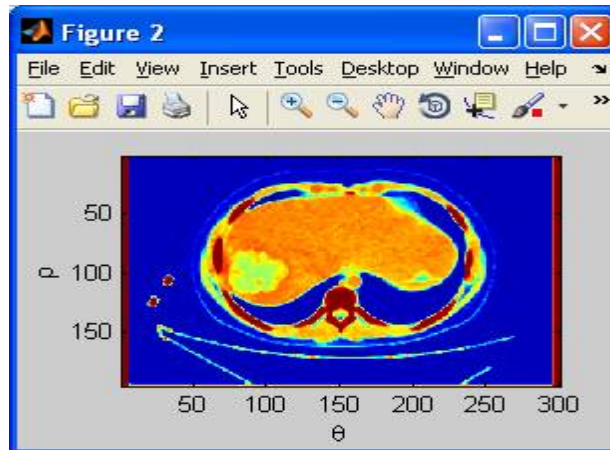


Fig.6.AAM Technique Appliance

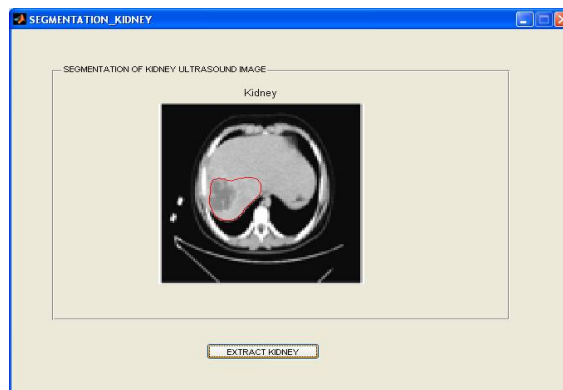


Fig.7. Cortex Region Analysis

## VII. CONCLUSION AND FUTURE SCOPE

The proposed methodology relies on image processing and analysis techniques (such as multi-thresholding based on statistical local and global parameters, mathematical morphology, and image filtering) and also on prior knowledge about the cardiac structures involved. In the localization phase, a fast localization method which effectively combines 3D GHT and 3D AAM is proposed, which utilizes the global shape and texture information. In the segmentation phase modified RF methods are proposed to efficiently accomplish the multi-structure segmentation task. Finally the segmentation of kidney image is perfectly segment using random forest and active appearance model technique.

In future the segmented kidney image compared to training dataset to provide disease of that segmented image. Disease can recognized in threshold value, that value compared into segmented image.

## REFERENCES

- [1] Source: Summary Health Statistics for U.S. Adults: National Health Interview Survey, 2011, tables 7, 8, <http://www.nlm.nih.gov/medlineplus/kidneydiseases>.
- [2] Source: Deaths: Final Data for 2010, tables 9, 10, 11, <http://www.nlm.nih.gov/medlineplus/kidneydiseases>.
- [3] WL. Clapp. "Renal Anatomy". In: XJ. Zhou, Z. Laszik, T. Nadasdy, VD. D'Agati, FG. Silva, eds. Silva's Diagnostic Renal Pathology. New York: Cambridge University Press; 2009.

## International Journal of Innovative Research in Science, Engineering and Technology

(An ISO 3297: 2007 Certified Organization)

Website: [www.ijirset.com](http://www.ijirset.com)

Vol. 6, Issue 2, February 2017

- [4] Siemer, Stefan, et al. "Efficacy and Safety of TachoSil as Haemostatic Treatment versus Standard Suturing in Kidney Tumour Resection: A Randomised Prospective Study." *European urology*, vol. 52. no. 4, pp.1156-1163, 2007.
- [5] L. Jun, Z. Xiaodong, L. Erping, —Study on Differential Diagnosis of Renal Column Hypertrophy and Renal Tumors by Pulsed Subtraction Contrast-enhanced Ultrasonography, *Chinese Journal of Ultrasound in Medicine*, 4. 039, 2006.
- [6] T. Hart, M. Gorry, P. Hart, et al. —Mutations of the UMOD gene are responsible for medullary cystic kidney disease 2 and familial juvenile hyperuricaemic nephropathy, *Journal of medical genetics*, vol. 39(12), pp. 882-892, 2002.
- [7] J. Bennington, J. Beckwith, —Tumors of the kidney, renal pelvis, and ureter, *Washington, DC: Armed Forces Institute of Pathology*, 1975.
- [8] O. Gloger, K. Tonnie, R. Laqua, et al. —Fully Automated Renal Tissue Volumetry in MR Volume Data Using Prior Shape Based Segmentation in Proband-Specific Probability Maps, *IEEE Trans. Biomed. Eng.*, vol. 62, no. 10, pp. 2338-2351, 2015.
- [9] M. D. Beland, N. L. Walle, J. T. Machan, and J. J. Cronan, —Renal cortical thickness measured at ultrasound: Is it better than renal length as an indicator of renal function in chronic kidney disease?, *Am. J. Roentgenol.*, vol. 195, no. 2, pp. 146–149, 2010.
- [10] N. S. Muto, T. Kamishima, A. A. Harris, F. Kato, Y. Onodera, S. Terae, and H. Shirato, —Renal cortical volume measured using automatic contouring software for computed tomography and its relationship with BMI, age and renal function, *Eur. J. Radiol.*, vol. 78, no. 1, pp. 151–156, 2011.
- [11] T. S. Lee, —Image representation using 2D Gabor wavelets, *IEEE Trans. Pattern Analysis and Machine Intelligence*, vol. 18(10), pp. 959 – 971, 1996.