

An Analyze on Forming of Titanium Grounded Metals Employing EDM and WEDM

Krishna Kumar¹, Prof Vinod Kumar Singla²

Research Scholar, Dept. of ME, Thapar University Patiala, Punjab, India¹

Associate Professor, Dept. of ME, Thapar University, Patiala, Punjab, India²

ABSTRACT: The aspire of this brush-up is to demonstrate the amalgamated data about the donations of various investigators on the practical coating of EDM and WEDM on titanium fabrics and afterwards discover the explore gaps. The literature analyze has been accomplished from three views such as covering of EDM and WEDM on titanium fabrics, usage of tools and proficiencies for corresponding observational consequences and coating program of productions produced by EDM and WEDM. Three main explore areas have been distinguished. First, the coating program of EDM and WEDM on titanium fabrics primarily TiNi founded alloys. Second, the usage of encouraged tools and proficiencies such as artificial neural network (ANN), advanced particle swarm optimization (PSO) and tabu heightened genetic algorithm (GA). Third, the examine and psychoanalysis of surface unity in EDM and WEDM on titanium fabrics. In accession, the research paper has also formulated the future research directions. The research paper has been resolved by indicating the future research instructions for the explore gaps named during this literature analyze.

KEYWORDS: EDM, WEDM, PSO, GA, ANN

I. INTRODUCTION

TiNi metals are a crucial class of shape computer memory metals. In recent years, the fabrics such as titanium-nickel (TiNi) grounded shape computer memory alloys and other SMAs are ordinarily employed in medical and several engineering coatings. The medical coatings admit monocle frames, surgical stents, orthodontic arch cables, active catheters. The industrial management coatings are operative devices such as holdfasts, varnishing and coupling, aerospace actuators, detectors, cellular phone feelers and fuel gadget [1].

TiNi alloys are primarily employed owing to their high intensity at low to moderate temperature, shape computer memory effect (SME), high wear opposition, high corrosion opposition, light weight, great ductility, good fatigue belongings, high bio-compatibility and so on [2]. The microstructure feature of TiNi alloy is that it is in a solid solution phase at lower temperatures, but in an austenitic level at elevated temperatures [3].

Machinability analyze of TiNi flesh computer memory alloy has become a significant formula of the fabricating sector. The coordinating of titanium fabrics is extremely unmanageable because of low thermal conductivity and high chemical reactivity. The productiveness and surface integrity are distinguished as significant phenomena in the procedure of machining [4]. Higher productiveness can be accomplished by employing high cutting speed. The producing of these fabrics at higher cutting speed is very hard due to greater tool wear (rapid chipping at cutting edge, plastic contortion of the cutting edge), higher surface hardness, severe microstructure change and poor surface character [5].

In the past few years, SMAs are hired in many engineering coverings with unlike shapes like tubes, foils, tapes and in medical finishing guide wire for tube. The forming of SMAs is

Comparatively significant and constitutional part in the production of elements for employing in engineering applications. Throughout conventional forming of these fabrics, higher tool wear and lower surface character is normally celebrated phenomenon, due to their mellow strain indurating consequence, pseudo elastic deformation and

International Journal of Innovative Research in Science, Engineering and Technology

(An ISO 3297: 2007 Certified Organization)

Website: www.ijirset.com

Vol. 6, Issue 5, May 2017

high stamina. Thus, they can be efficaciously formed by nonconventional producing procedures such as laser forming, Water Jet Forming, Electro Discharge Machining (EDM) and Wire-EDM (WEDM) [6, 7].

The covering of EDM and WEDM procedure accepts automotive, aerospace, mould, instrument and die causing manufactures. EDM and WEDM coverings can also be found out in the medical, optical, dental, jewellery industries and R & D areas. Another popular application for EDM and WEDM is the producing of extrusion dies [8].

Compositedetermines of TiNi shape computer storage admixtures are hard to producing by established machining, in such a position EDM and WEDM is preferred and in EDM and WEDM very exact, precise and irregular intricate shapes can be fabricated. EDM and WEDM has been developing wide acceptance for the machining of various conductive fabric employed in real coatings such as alloys, ceramics, silicon and metal matrix composites [9].

II. EDM AND WEDM FORMING OF SMAS

This division furnishes the basics of the EDM and WEDM procedure

2.1 EDM and WEDM of SMAs

EDM and WEDM is an electro-thermic procedure in which the fabric is got rid of by electro discharges happening among the work piece and tool electrode plunged in a liquid dielectric medium. These electro-completes melt and vaporize minute quantities of the work-piece, which are then swept off by the insulator. Therefore, EDM and WEDM is a various proficiency in forming the stubborn fabrics, which are hard to automobile by conventional proficiencies.

III. ANALYZE OF WORK DONE IN EXPLORE AREA

In EDM and WEDM, acquit sparks are employed to melt and disappear the fabric. The dielectric fluid is hired as a medium amongst the electrode and work piece. The highly composite Shapes can be formed using EDM and WEDM with high accuracy.

3.1 Fabric Removal Rate (FRR) in EDM and WEDM

The FRR is a significant argument which involves the productiveness of any fabrication industry. The FRR contributes a critical role in enhancing the productivity. FRR is the quantity of fabric got rid of from the work piece under the bringing time (mm³/min or mg/min). It determines the characteristic efficiency apartment of the automobile [4]. The present study is made on the FRR for TiNi figure computer memory alloy produced by EDM and WEDM at dissimilar forming conditions. The FRR is enhanced by the enhance in discharge flaws. It is due to the strengthened discharge energy melts and removes the fabric more easily by the higher flaws density. The FRR will enhance with a pulse on time continuance also up to a particular point and then reduction happens after that. This is due to the expansion of plasma channel. At high pulse duration, the focalized temperature enhances. It leads to disintegration of carbon that is bonded on the electrode surfaces. Hence the discharge energy of the electrode is reduced and lower FRR is accomplished at high pulse duration [5, 11].

During the non-conventional machining the FRR is less equated to the conventional machining. However, the surface is comparatively less touched by the phenomena such as defects, plastic deformation, cracks, work indurated layer, residual emphasizes equated to conventional machining. The automobile constituents having good surface quality are required [6, 12]. In the examine is to influence the influence of some of the most significant arguments implicated in the EDM procedure on Ti₅₀Ni_{49.5}Cr_{0.5} ternary alloys admitting discharge flaws I_p and pulse duration τ_p . Fig. 3.1 shows the fabric removal rate (FRR) versus the pulse duration at various discharge flaws for the ternary alloy (Ti₅₀Ni_{49.5}Cr_{0.5}). It is detected that the FRR enhances with the discharge flaws. It has been described that a high discharge flaws can have a high flaws concentration [13]. This characteristic will evidently enhance the fabric's melting and evaporation and the impulsive force of elaborated dielectric medium. Hence, a higher FRR happens at a higher discharge flaw throughout the EDM procedure. Besides, one can also determine in Fig. 1 that the FRR initially enhance with the pulse length, reach maximum assess, and then decrease to constant values for several discharge flaws. It is anticipated that the FRR should enhance with growing pulse duration, because its high collected electro-discharge energy will rapidly melt and evaporate the fabric. Furthermore, over-long pulse duration will cut down the energy density of the discharge spots by elaborating the plasma channel [14].

International Journal of Innovative Research in Science, Engineering and Technology

(An ISO 3297: 2007 Certified Organization)

Website: www.ijirset.com

Vol. 6, Issue 5, May 2017

The energy furnished by the plasma channel melts the fabric, but it is insufficient to render a high bursting force of the dielectric which can flush the molten fabrics away from the EDMed surface. As a consequence, the molten fabric cannot be swept away efficaciously by the circulative dielectric system, and therefore the FRR decreases.

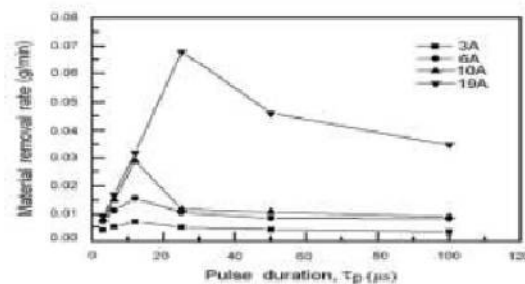


Fig.1 The fabric removal rate vs. pulse duration τP at various discharge flows I_p for the Ti50Ni49.5Cr0.5 alloy.[5]

3.2 Surface Integrity of SMAs

Surface circumstances of a constructing/forming alloy part instantly decide the procedure and end use of that contribution. The surface integrity of the final intersection is crucial in machining procedures.

In most coverings, having the smoothest potential surface is hoped, especially when the fatigue life of a automobile component is significant. Surface integrity is a factor which is affected by the forming conditions and suggests the automobile surface and subsurface. The surface integrity is a major leading factor in procedure and performance of the part [15].

Machining procedures cause and affect assorted surface integrity attributes on the completed parts. These can be grouped as:

- (a) Shape characteristics such as surface disorderliness.
- (b) Mechanical attributes impressed such as micro hardness and residual stresses.
- (c) Metallurgic state such as microstructure and recast layer

The tone of surface is very much necessary in functioning, preventive, life costs, period of time and dependability of the products. Non-conventional forming is meant for the better surface

Integrity and higher productivity. This proficiency is rapidly developing in micro component manufacturing industries [16].

3.2.1 Surface Harshness

Surface harshness is a significant argument influence on the performance of the automobile components. There are number of machining arguments which quantify the surface harshness such as the amplitude arguments that qualifies the surface topography. Surface deflection Characteristic is most widely employed argument as the arithmetic mean average harshness [17]. Theselection of EDM or WEDM arguments is a substantial criterion in accomplishing a better surface finish for TiNi shape computer memory alloys.

The surface harshness in an EDM is contingent on the intensity of the spark and the size of the crater produced throughout the shaping at unlike range of pulse duration or discharge flaws.

The surface harshness is significantly affected by the discharge flaws and pulse duration adds to the surface harshness of the EDMed TiNiCr and TiNiZr ternary shape computer memory alloys [5,18]. From this it is authorize that the surface harshness is primarily changed by the discharge flaws adopted by the pulse duration. For the better surface harshness lower discharge flaws and lower pulse duration is commanded.

The automobile feed also affects the surface harshness which in turn the wire stress and voltage significantly affects the surface harshness because of wire oscillation during the machining and stronger electric field discharges spark at the same gap between the electrode and work piece induces coarse surface. From this the better surface finish can be achieved with the lower automobile feed [10, 19].

As observed above, the electro-discharge energy mode in the EDM procedure, demanding the discharge flaws I_p and pulse duration τP , can also dissemble the work fabric's surface harshness.

Fig.2 depicts the harshness of EDMed surface versus the pulse duration at several discharge flows for Ti50Ni49.5Cr0.5 alloy. These features evidence that the higher discharge flaws and pulse duration will have higher harshness of EDMed

International Journal of Innovative Research in Science, Engineering and Technology

(An ISO 3297: 2007 Certified Organization)

Website: www.ijirset.com

Vol. 6, Issue 5, May 2017

surface. As the discharge current increases, discharges strike the surface of the work-piece more intensely, and the leading worsened erosion effect leads to a deterioration of the surface harshness. Furthermore, extended pulse duration allows greater discharge energy to melt and penetrate deeper into the fabric, which develops deeper and larger craters, causing an enhanced surface harshness on the work-piece [20].

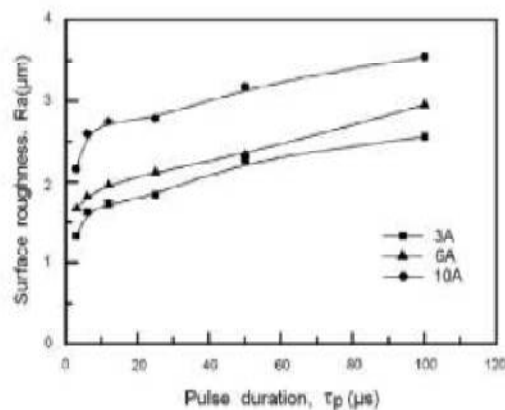


Fig.2 The surface harshness vs. the pulse duration τ_p at various discharge current I_p for the Ti50Ni49.5Cr0.5 alloy.[5]

3.2.2 Microhardness

The hardness of the fabric after being automobile has been found to be greater on the surface of the fabric than through the depth of the fabric. Where the heat and strain effects are neutralized for bulk of fabric. These types of microhardness changes are also related surface integrity issues [7, 21]. The automobile surface hardness is changing in EDM/ WEDM with using any fluid as a dielectric fluid. The automobile surface hardness enhances up to a certain depth it's off around 100 μ m later it corpse constant. Concluded that the automobile surface hardness of EDMed TiNi and TiNiCu alloy were heightened from 260Hv to 550Hv [221]. The hardness varies from the automobile outer surface to inner depth surface. It has been shown there is an heighten in near the outer automobile surface hardness with the higher pulse duration and peak flaws [5,23].

The outer automobile surface hardness marginally changed with electrode fabric. This owes to recast of melted electrode fabric on the automobile surface. This is due to consequence of tool fabric on EDMed surface hardness [24]. The hardening effect is because of the establishment of oxides Cr₂O₃, ZrO₂, TiO₂, TiNiO₃, carbides like TiC in the recast layer. It is primarily throughout use of copper electrode and kerosene as dielectric fluid during the EDM of TiNi grounded ternary alloy [25].

Fig.3 shows the cross-sectional hardness against distance from the EDMed surfaces of Ti50Ni49.5Cr0.5 and Ti35.5Ni49.5Zr15 alloys below the conditions of $I_p = 10A$ and $\tau_p = 100\mu$ s. It points that the specimen's hardness near the outer surface can reach 913 Hv for Ti50Ni49.5Cr0.5 alloy, but 1087 Hv for Ti35.5Ni49.5Zr15 alloy. This hardening consequence is due to the formation of the oxides Cr₂O₃, ZrO₂, TiO₂, TiNiO₃, carbides TiC and the deposition particles in the recast layer. Besides, the hardness of the matrix in TiNiX alloys is not impressed by the EDM procedure [26].

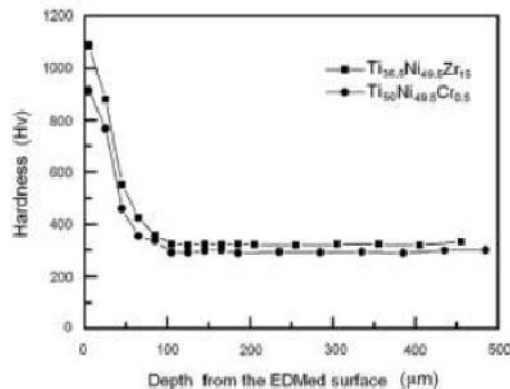


Fig.3 The examples hardness at various distance from the EDMed surfaces at $I_p=10A$ and $\tau_p = 100\mu s$ [1]

3.2.3 Residue stresses

After machining procedures, the work piece fabric is released of the thermo mechanical load on top of it due to the forming, but not all of the energy can be recalled. Some of it is spent to Plastic deformation, which causes the fabric to exhibit some emphasizes, particularly at its free ends of the surface. These stresses that remain in the fabric after the loading is got rid of are called residual stresses [27].

Residual stresses are fathered on the automobile surface, due to no uniform temperature distribution and quenching by the dielectric fluent. The cracks are originating blow whole and white layer on the come out in the WEDM. This is arising at higher pulse lengths rather than at lower pulse duration because thermally brought on stresses are more at higher pulse durations [14, 27]. The residual stresses demonstrate potential risk in terms of crack initiation and tire failure of end products.

The emphasizes heighten due to the rapid heating and cooling of fabric by the dielectric fluid [15,28]. The EDM procedure examples with residual tensile stresses have poor fatigue strength. The presence of carbon, carbides oxides in the surface layer is also detected; it may be due to the fact that, the tool electrode and the dielectric fluid cause inhomogeneity and more residuary stresses in the fabric. The automobile surface contains craters, blow holes, pock marks, melted droplets, debris and substantial layers, these may deviate the residual stress distribution to some extent [28].

3.2.4 Microstructure

During the Electro discharge forming the surface of the work-piece is disclosed to thermal, mechanical and chemical energy, thus contributes to the alters in the surface and subsurface properties because of high temperature around $10000^{\circ}C-12000^{\circ}C$ and assuaging effect. The automobile surface layer of the work piece always experiences several forms of metallurgical alterations. The surface integrity is affected by the plastic deformation during the machining. These changes occur in the fabric surface are determined by the machining conditions such as electrical and non-electrical arguments [29].

Analyzes on Ti base alloys showed that a very thin layer of plastic contortion was organized in the contiguous sub-surface of the work piece, and as the tool wears out, plastic contortion and subsequently the thickness of the changed from layer enhanced, due to microstructural alterations. The depth of these micro-structural alterations beneath the come on has been celebrated to enhance when the cutting speed and feed rate are heightened [30].

Fig.4 demonstrates the melted recast layer of WEDMed surface on Ti_{35.5}Ni_{49.5}Zr₁₅ SMA. It is detected that craters, melted drops, cracks and the surface texture induce the harshness. This recast layer comprises of some oxides as talked about in EDM surfaces of SMA. The recast layer also comprises of Ni rich phases, TiO₂, TiC and so on. The Cu₂O is shaped on the automobile surface due to the copper electrode [31]. The craters are shaped on the automobile surface, as demonstrated in Fig.3.4, which influences the surface harshness on the forming surface. The higher surface harshness comes along probably because of higher discharge flaws and longer pulse on time which is determined to form deeper and wider craters on the automobile surface.

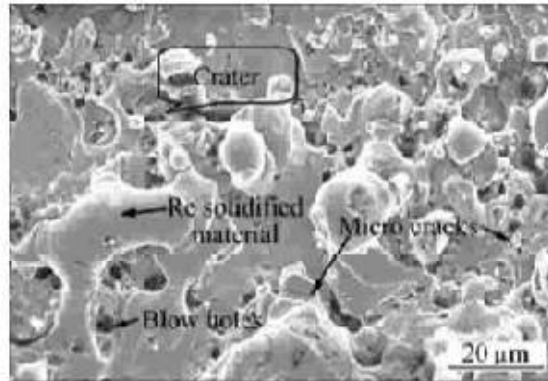


Fig..4 Micrograph of surface automobile employing WEDM for Ti35.5Ni49.5Zr15 alloy. [9]

3.2.5 Refuge Layer

The characteristic surface layer is formed due to solidification of melted fabric, high temperature and due to cooling effect. The surface layer is a white layer under that recast layer. It is requirement to realize the layer establishment and to denigrate its thickness during the machining Procedure. The layer formation goes on under the circumstances of higher discharge flaws and pulse duration with deficient flushing conditions. The evaluation of layer formation is grounded on the discharge flaws, pulse duration, type of dielectric fluid and flushing pressure [32].

Fig 5 evidences the heaviness of recast layer organized on the automobile surface. The recast layer can be cut down by higher pulse on time, because higher arc energy hits the dielectric fluid efficaciously which blushes away the molten fabric from the automobile surface. The recast layer also determines the SME of the automobile surface [33,34]. The heaviness of recast layer impresses the surface hardness because it contains unlike oxides, phases, compounds and matrix element. The recast layer heaviness of SMA using WEDM can be assured by choosing the optimum pulse on time, peak flaws and other procedure arguments [35].

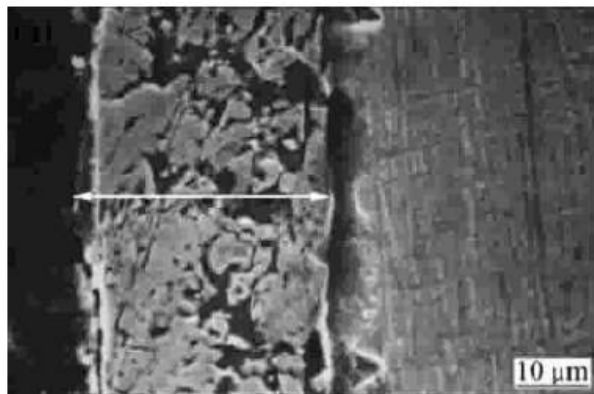


Fig.5 Cross sectioned micrograph of Fe-30Mn-6Si alloy automobile employing WEDM [1]

IV. CONCLUSION

The references faced above reveal that the EDM and WEDM of SMAs have been depicted on the consequence of pulse durations, discharge flaws and discharge voltage on the reactions. The investigators constituted the topography features such as surface harshness, mechanical properties impressed such as micro hardness and residual stresses and metallurgical state such as microstructure and recast layer in EDM and WEDM. Very little work has been described on the TiNi SMAs using EDM and WEDM and optimization of procedure arguments. As such there is a need to examine the effect of arguments in EDM and WEDM of NiTi shape computer memory alloy on surface harshness, micro

International Journal of Innovative Research in Science, Engineering and Technology

(An ISO 3297: 2007 Certified Organization)

Website: www.ijirset.com

Vol. 6, Issue 5, May 2017

hardness, residual stresses, and microstructure and recast layer on the automobile surface, and optimize EDM and WEDM procedure arguments.

REFERENCES

- [1] M. Manjaiah, S. Narendranath, S. Basavarajappa - Review on non-conventional machining of shape computer memory alloys. Transactions of Nonferrous Metals Society of China 24 (2014), 12-21.
- [2] Lin, H. C., Lin, K. M. and Chen, Y. C. - A analyze on the machining characteristics of TiNi shape computer memory alloys. Journal of FabricProcedure Technology 105 (2000), 327-332.
- [3] Yuebin Guo, Andreas Klink, Chenhao Fu, John Snyder - Machinability and surface integrity of Nitinol shape computer memory alloy. CIRP Annals- Manufacturing Technology 62 (2013), 83-86.
- [4] K.H. Ho, S.T. Newman, S. Rahimifard, R.D. Allen- State of the art in wire electrical discharge machining (WEDM). International journal of Automobile Tools & Manufacture 44 (2004), 1247-1259.
- [5] S.L. Chen, S.F. Hsieh, H.C. Lin, M.H. Lin, J.S. Huang,- Electrical discharge machining of TiNiCr and TiNiZr ternary shape computer memory alloys. Fabric Science and Engineering: A 445-446 (2007), 486-492.
- [6] K. Weinert, V. Petzoldt- Machining of NiTi grounded shape computer memory alloys. Fabric science and engineering A 378 (2004), 180-184.
- [7] DurulUlutun, TugrulOzel- Machining induced surface integrity in titanium and nickel alloys: A review. International Journal of Automobile Tools & Manufacture 51 (2011), 250-280.
- [8] D.K. Aspinwall, S.L. Soo, A.E. Berrisford, G. Walder- Workpiece surface harshness and integrity after WEDM of Ti- 6Al - 4V and Inconel 718 using minimum damage generator technology. CIRP Annals - Manufacturing Technology 57 (2008), 187-190.
- [9] S.F. Hsieh, S.L. Chen, H.C. Lin, M.H. Lin, S.Y. Chiou- The machining characteristics and shape recovery ability of Ti - Ni - X (X - Zr , Cr) ternary shape computer memory alloys using the wire electro-discharge machining. International Journal of Automobile Tools and Manufacture 49 (2009), 509-514.
- [10] Aniza Alias, Bulan Abdullah, NorlianaMohd Abbas- Influence Of Automobile Feed Rate In WEDM Of Titanium Ti- 6al-4v With Constant Flaws (6A) Using Brass Wire. Procedia Engineering 41 (2012), 1806 - 1811.
- [11] S.L. Chen, S.F. Hsieh, H.C. Lin, M. H. Lin, J.S. Huang- Electrical discharge machining of a NiAlFe ternary shape computer memory alloy. Journal of alloys and compounds 464 (2008), 446-451.
- [12] AhmetHascalik, UlasCaydas- A comparative analyze of surface integrity of Ti-6Al-4V alloy automobilized by EDM and AECG. Journal of FabricsProcedureing Technology 190 (2007), 173-180.
- [13] C.H. Che-haron, A. Jawaid- The effect of machining on surface integrity of titanium alloy Ti - 6 % Al - 4 % V. Journal of FabricsProcedureing Technology 166 (2005), 188-192.
- [14] Vinod Yadav, Vijay K. Jain, Prakash M. Dixit- Thermal stresses due to electrical discharge machining. International Journal of Automobile Tools & Manufacture 42 (2002), 877-888.
- [15] Suleiman Abdulkareem, Ahsan Ali Khan, and Mohamed Konneh- Cooling Effect on Electrode and ProcedureArguments in EDM. Fabrics and Manufacturing Procedurees 25 (2010), 462-466.
- [16] BulentEkmekci, OktayElkoca., A. ErmanTekkaya, AbdulkadirErden- Residual Stress State and Hardness Depth in Electric Discharge Machining: De-Ionized Water as Dielectric Liquid. Automobile Science and Technology 9 (2005), 39- 61.
- [17] J.L. Cantero, M.M. Tardio- Dry drilling of alloy Ti - 6Al - 4V. International Journal of Automobile Tools & Manufacture 45 (2005), 1246-1255.
- [18] Mu-Tin Yan, Yi-Peng Lai- Surface quality improvement of wire-EDM using a fine-finish power supply. International Journal of Automobile Tools & Manufacture 47 (2007), 1686-1694.
- [19] M.T. Antar, S.L. Soo, D.K. Aspinwall D. Jones, R. Perez- Productivity and workpiece surface integrity when WEDM aerospace alloys using coated wires. Procedia Engineering 19 (2011), 3-8.
- [20] PetrHarcuba, Lucie Bacakova, Josef Strasky, MarketaBacakova, Katarina Novotna, Milos Janecek- Surfaceretreatment by electric discharge machining of Ti - 6Al - 4V alloy for potential coating in orthopaedics. Journal of the mechanical behavior of biomedical fabrics 7 (2012), 96-105.
- [21] F. Ghanem, C. Braham, H. Sidhom- Influence of steel type on electrical discharge automobilized surface integrity. Journal of FabricsProcedureing Technology 142 (2003), 163-173.
- [22] Peter Fonda, Zhigang Wang, Kazuo Yamazaki, Yuji Akutsu- A fundamental analyze on Ti - 6Al - 4V' s thermal and electrical properties and their relation to EDM productivity. Journal of FabricsProcedureing Technology 202 (2008), 583-589.
- [23] Josef Straskya, Milos Janeceka, PetrHarcubaa, Michal Bukovinab, LotharWagne -The effect of microstructure on fatigue performance of Ti - 6Al - 4V alloy after EDM surface treatment for coating in orthopaedics. Journal of Mechanical Behavior of Biomedical Fabrics 4 (2011), 1955-1962.