

International Journal of Innovative Research in Science, Engineering and Technology

(A High Impact Factor, Monthly, Peer Reviewed Journal)

Visit: www.ijirset.com

Vol. 7, Issue 7, July 2018

Townscape Analysis of Johor Bahru City, Malaysia

Mohamed Abdalsalam Ismaeil¹, Abdulbaset Abushnaf², Ali Mohamed Albeddal³, Yusef Abdolla Alshmas⁴
Lecturer, Department of Civil Engineering, Technical Sciences College, Bani Walid, Libya^{1,2,3,4}

ABSTRACT: The task of designing urban places-where the designer is primarily concerned with the sensual, but particularly visual, qualities of these places-has traditionally been termed urban design [1]. Though urban design is the most traditional field of planning, it sorely lacks cohesive theoretical foundations. Much writing takes the form of guidebooks or manuals, which rely on rules of thumb, analytical techniques, and architectural ideas whose theoretical justifications are unclear [2]. With the current emphasis in planning agencies on environmental enhancement and improvement programmes, small are approaches and design guidance, this absence of information is a serious problem[3].

KEYWORDS: Analysis of The Townscape of Johor Bahru City Malaysia.

I. INTRODUCTION

The recognition of building styles and their relation to historical periods is the key to townscape analysis. The visual impact of building fabric can now be more precisely assessed by taking account of the modifications to basic architectural forms. The correlation of building fabric with functional change is a link between the morphological and contemporary dynamic fields of urban study.

1.1 Objective.

The objective of this paper is townscape analysis on Johor Bahru City, especially near of Jalan Wong Ah Fook and Jalan Trus. Townscape analysis consist of analysis of urban view, vistas, streetscape and roof scapes.

1.2 Johor.

1. Johor as south entrance to Peninsular Malaysia and important informing image of state.
2. Important part in economic growth area; Singapore, Malaysia and Indonesia.
3. Every district in state of Johor have certain concentration in development.
4. As centre of economic area in south Malaysia; commerce, industrial, education, monetary and tourism.
5. Reside in international trading route; Singapore, Johor Bahru, Riau.

International Journal of Innovative Research in Science, Engineering and Technology

(A High Impact Factor, Monthly, Peer Reviewed Journal)

Visit: www.ijirset.com

Vol. 7, Issue 7, July 2018



Figure -1: Peninsular Malaysia.

13 Johor Bahru.

1. As center of commerce, monetary, culture, tourism, education, transportation, sports, industrial, communication and recreation.
2. Having facility of commerce, accommodation, convention, parks, higher education, institution of marine activities center, research center of Islamic study.
3. Potential becoming international trade district because its strategic location; direct adjacent with Singapore.

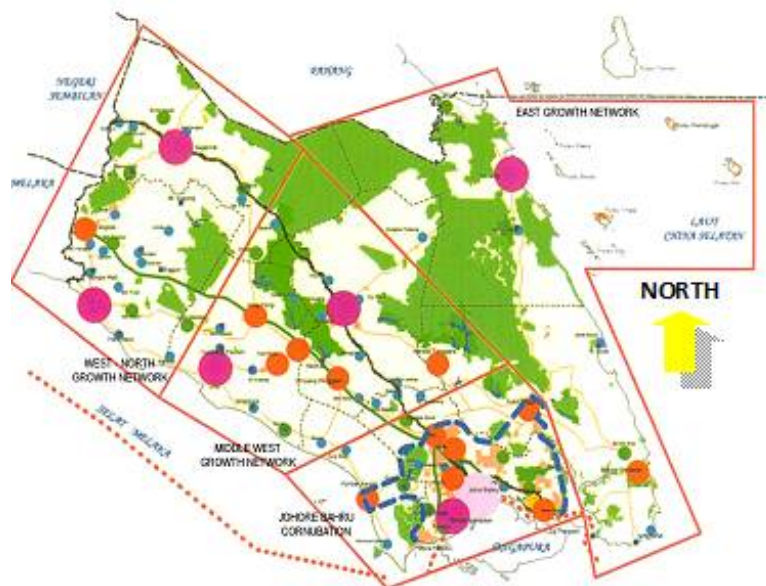


Figure -2: State of Johor Darul Ta'Zim.

International Journal of Innovative Research in Science, Engineering and Technology

(A High Impact Factor, Monthly, Peer Reviewed Journal)

Visit: www.ijirset.com

Vol. 7, Issue 7, July 2018

1.4 Study Area.

Study area located in Johor Bahru CBD and between Jalan Wong Ah Fook – Jalan Trus. This area become the twenty four hours people activities and high social interactive. Because of this, the study area become crowded and also as center of economic activities.

The characteristics of study area are :

1. Having five storey buildings; Public Bank, Pan Putri Pacific Hotel, Anshar Building, Kota Raya Shopping Center, City Square Shopping Center and Offices.
2. Dominant function of building as commercial buildings.
3. Different characteristics of architecture style; colonial, art deco and modern.
4. Building height about 3 – 4 storeys.

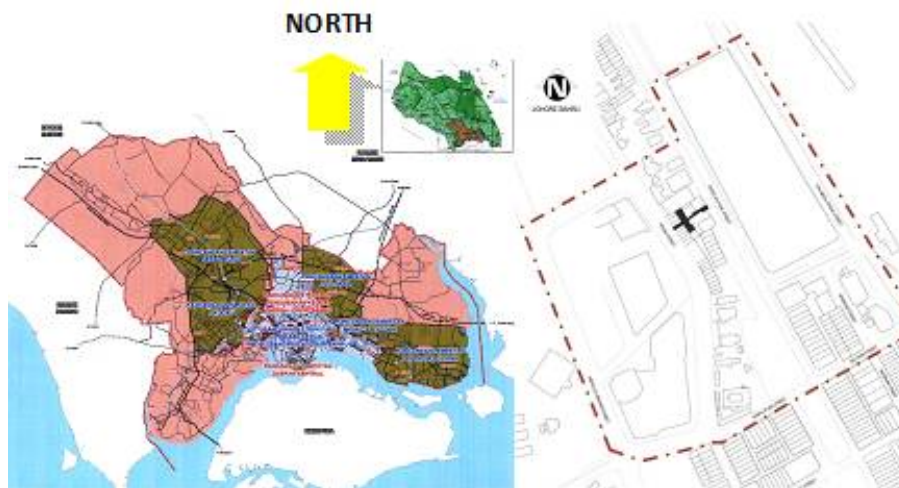


Figure -3: Study Area.



Sultan Ibrahim Building



City Square Building



Old Shophouses building



Anshar Building

International Journal of Innovative Research in Science, Engineering and Technology

(A High Impact Factor, Monthly, Peer Reviewed Journal)

Visit: www.ijirset.com

Vol. 7, Issue 7, July 2018

II. TOWNSCAPE ANALYSIS

2.1 Jalan Wong Ah Fook.

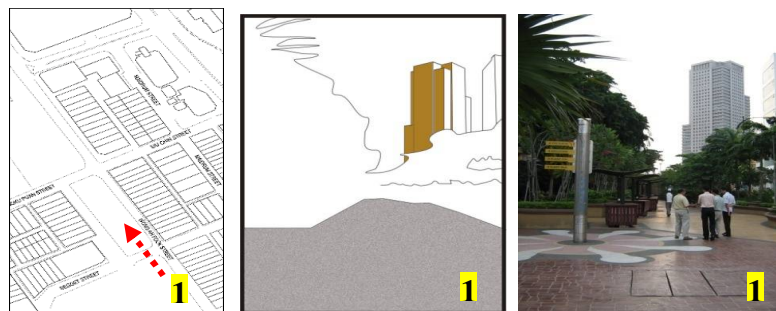


Figure -4: Interesting vista (city square shopping center) for pedestrian and vegetation as a strong instructing to it.



Figure -5: Large pedestrian walkway and poor maintenance cannot generate a sense of space.

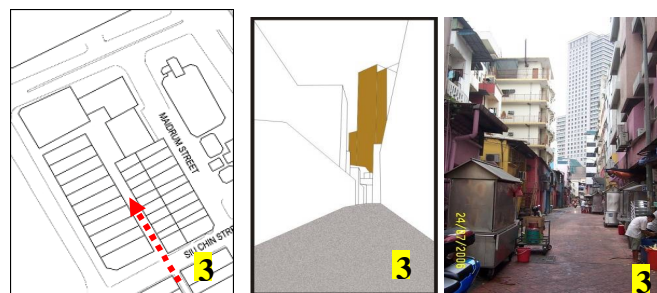


Figure -6: Narrow street and buildings formation towards the City Square Shopping Center is important for the setting of the City Square Shopping Center within the urban structure.

International Journal of Innovative Research in Science, Engineering and Technology

(A High Impact Factor, Monthly, Peer Reviewed Journal)

Visit: www.ijirset.com

Vol. 7, Issue 7, July 2018

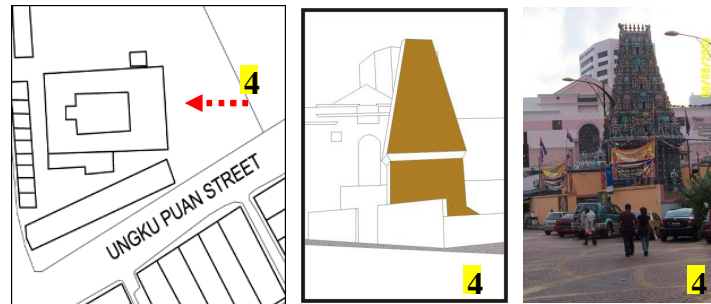


Figure -7: This outstanding artistic building within the streetscape should be protected.

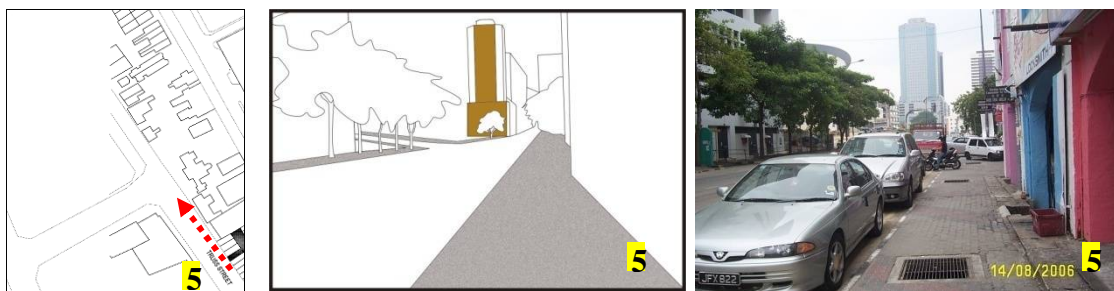


Figure -8: Vista to Landmark Building from entrance to the study area.

III. CONCLUSION

1. Visual coherence and organization can create image for pedestrian to recognizing a place.
2. Eye movement is essential in visual perception and always actively scanning and can generate perception of the city or town.
3. Central Business District in Johor Bahru city is having characteristics between heritage buildings and new buildings.
4. The old buildings have to conserve to protection of the character and special qualities of city characteristics.

REFERENCES

- [1] R. Varkki George [1997]. A procedural explanation for contemporary urban design.
- [2] Ernest Strenberg [2000]. An integrative theory of urban design.
- [3] R. K. Jarvis [1980]. Urban environments as visual art or as social settings? A review.