

International Journal of Innovative Research in Science, Engineering and Technology

(A High Impact Factor, Monthly, Peer Reviewed Journal)

Visit: www.ijirset.com

Vol. 7, Issue 3, March 2018

Experimental Investigation on Various Waste Water Treatment With Production of Fertilizer

R.Dhilip kumar¹, K.viji², R. Aathirai³, M.Subash⁴, S.Murugan⁵

Assistant Proffesor, Department of Civil Engineering, The Kavery Engineering College, Mecheri, Tamil nadu, India¹

U.G.Student, Department of Civil Engineering, The kavery Engineering College, Mecheri, Tamil nadu, India^{2,3,4,5}

ABSTRACT: Drinking water is a vital resource for all human beings and the access to safe and clean drinking water is a major concern throughout the world. The water resources all around the world contaminated by industrial waste disposal so it need of water treatment process. This study investigates about the various waste waters such as Sago industries, Dairy waste water, Dye waste water, Domestic waste water. The characteristics of the various waste waters are analysed and compared based on water quality parameters such as Turbidity, Biochemical Oxygen Demand (BOD), Chemical Oxygen Demand (COD), Total Suspended Solids(TSS), Nitrates, Phosphates, and Total Nitrogen (TN), Calcium(Ca). The water quality parameters permissible limits are compared with IS10500:2012, ISI10500:1991,WHO standards. The waste water are analysed and find out in which contend is higher for fertilizer production. That waste water sludge is used for fertilizer production. Finally the sludge is converted into natural fertilizer for growth of the plants. The treated waste water is used for agriculture.

KEYWORDS: Treatment, BOD, Total suspended solids, Nitrates, Phosphates, TotalNitrogen, calcium

I. INTRODUCTION

Growing population, increased economic activity and industrialization has not only created an increased demand for fresh water but also resulted in severe misuse of this natural resource. Water resources all over the world are threatened not only by over exploitation and poor management but also by ecological degradation. Indiscriminate dumping of untreated wastewater and chemical wastes directly into rivers, lakes and drains have made these water bodies unable to cope up with the pollutant load. The steady increase in the amount of water used and wastewater produced by urban communities and industries throughout the world also poses potential health and environmental problems. The contaminated water disrupts the aquatic life and reduces their reproductive capability.

Water covers 70.9% of the earth's surface and is vital for all known forms of life. On earth 96.5% of the planet's water is found mostly in oceans 1.7% in ground water 1.7% in glaciers and the ice caps of Antarctica and Greenland; a small fraction in other large water bodies and 0.001% in the air as vapor, clouds (formed of solid and liquid water particles suspended in air), and precipitation. Only 2.5% of the earth's water is fresh water and 98.8% of that water is in ice and ground water. Less than 0.3% of all freshwater is in rivers, lakes and the atmosphere, and an even smaller amount of the earth's freshwater (0.003%) is contained within biological bodies and manufactured products.

Dairy industries generate large quantities of wastewater which originates from various operations during the production of milk and milk products. The main wastes from these industries are chemically modified liquid wastes. The dairy wastewater may contain protein, salts, fatty substance, lactose and various kinds of cleaning chemicals. The presence of detergents and their additives in dairy wastewater hardly influence the total COD in contrast to milk,

International Journal of Innovative Research in Science, Engineering and Technology

(A High Impact Factor, Monthly, Peer Reviewed Journal)

Visit: www.ijirset.com

Vol. 7, Issue 3, March 2018

cream or whey, the high COD of which are likely to have a dominating effect. Though the dairy wastewater is biodegradable, it is strong in nature.

Sago waste water is naturally contains starch. So the sago waste water sludge is used to conversion of fertilizer. Now a days sago industries plays a important role in production of much waste waters. In this study investigates about the waste water is after treating used for agriculture purpose and the sludge is used for fertilizer. Domestic waste waters plays a vital role in production of waste waters. It contains chemicals, detergents and etc. And also the waste water contains some useful nutrients like calcium, phosphate and etc. So the waste water requires treatment for removal of hardness. After treatment it is used for other purposes.

Dye waste water collected from the chemical industries. It contains many toxic contaminates. So it requires treatment. After treatment it may be used for the any other purposes. The sludge of the die waste water contains some useful nutrients so it may be used for fertilizer conversion.

II. EFFECTS OF CONTAMINATED WATER

Water-borne diseases are infectious diseases spread primarily through contaminated water. Through these diseases are spread either directly or through flies or filth, water is the chief medium for spread of these diseases and hence they are termed as water-borne diseases.

Most intestinal diseases are infectious and are transmitted through faecal waste. Pathogens –which include virus, protozoa, and parasitic worms – are diseases producing agents found in the faeces of infected persons. These diseases are more prevalent in areas with poor sanitary conditions. These pathogens travel through water sources and interfuses directly through persons handling food and water. Since these diseases are highly infectious, extreme care and hygiene should be maintained by people looking after an infected patient. Hepatitis, cholera, dysentery, and typhoid are the more common water-borne diseases that affect large populations in the tropical regions.

Typhoid, Cholera, Paratyphoid fever, Basically Dysentery are caused by Bacterial infections. Infectious Hepatitis (jaundice), Poliomyelitis is caused by viral infections. Pathogens can cause a variety of gastro-intestinal diseases, which can be fatal to babies and to other vulnerable populations. WHO data shows water pollutions is one of the greatest causes of mortality that can be linked to environmental factors. Boiling water can destroy most pathogens; however this requires fuel, a commodity often in short supply in poor households. (Some of the diseases may be related to poor hygiene rather than direct ingestion of contaminated water but this in turn is often a result of lack of adequate amount of clean water.)

Toxic contaminants in fish or other foods are less likely to cause acute poisoning but can have serious long-term effects, depending on the pollutants and the doses. Understandably, fishing communities along rivers are particularly at risk since they have a steady diet of the local fish over many years.

III. LITRATURE SURVEY

Jaya S.Pillai et.al (2013) This study investigates the potential of constructed wetlands to function as Ecological Sanitation systems, achieving water reuse, nutrient reuse and biomass production. Vertical flow constructed wetland systems planted with indigenous species such as Napier Bajra Hybrid grass (*Pennisetum purpureum* x *Pennisetum typhoides*) and Guine grass (*Panicum maximum*) were developed for the treatment and utilization of Greywater for non-potable purposes. The annual above ground biomass yield (from 6-8 harvests) of Napier Bajra Hybrid grass was found to be higher (200 -250 t/ha) when compared to Guinea grass (60-72 t/ha). Based on the results, the constructed wetland system planted with Napier Bajra Hybrid grass proved to be a reliable, onsite and decentralised Ecological Sanitation system.

International Journal of Innovative Research in Science, Engineering and Technology

(A High Impact Factor, Monthly, Peer Reviewed Journal)

Visit: www.ijirset.com

Vol. 7, Issue 3, March 2018

IV. METHODOLOGY

The samples were collected from in and around Salem. The various waste water such as Domestic, Dye, Diary, Sago waste waters collected from the following locations,

- Domestic waste (Nangavalli home)
- Dye waste (Jalagandapuram, VBT Factory)
- Diary waste (Salem Aavin)
- Sago waste (Sri venkateshwara sago industries, Salem)

This is to determine the variation in water quality parameter. The waste water samples were collected by method of sampling techniques.

The samples were collected in the period of January 2018. In each location there should be 10 samples. The waste water samples containers should be thoroughly washed and completely filled with the sample. There should not be any gap above samples in the container. The interaction with gas phase and agitation transport of the samples is hence avoided.

A one litre sample is normally sufficient for most physical and chemical analysis. However, it depends upon the type of analysis, method used etc. So one litre sample were collected which is sufficient for the tests conducted for the project.

The treatments of waste water samples are using coagulation process. Because other techniques are does not produce the sledges. In our project the sludge are important because they are converted into fertilizers. Organic fertilizers are fertilizers derived from animal matter, animal excreta (manure), human excreta, and vegetable matter (e.g. compost and crop residues). Naturally occurring organic fertilizers include animal wastes from meat processing, peat, manure, slurry, and guano. In contrast, the majority of fertilizers used in commercial farming are extracted from minerals (e.g., phosphate rock) or produced industrially (e.g., ammonia). Organic agriculture, a system of farming, allows for certain fertilizers and amendments and disallows others.

V. EXPERIMENTAL RESULTS

DOMESTIC WASTE WATER SAMPLE CHARACTERISTICS

In the Domestic waste water contains the many chemical and detergents. The Total Dissolved Solids are exceeding limit of 500 mg/l in this area. The results obtained are mentioned in Table 4.1.

Table 4.1 Characteristics of Domestic waste water sample.

CHARACTERISTICS	DOMESTIC WASTE WATER SAMPLE	UNITS
PH	8.8	
Turbidity	35.6	NTU
Colour	Light ash colour	
Temperature	25°C	°C
Ammonium nitrogen	116.2	mg/l
Calcium	86.16	mg/l
Total Dissolved solids	5800	mg/l
Total suspended solids	10600	mg/l
BOD	281	mg/l

International Journal of Innovative Research in Science, Engineering and Technology

(A High Impact Factor, Monthly, Peer Reviewed Journal)

Visit: www.ijirset.com

Vol. 7, Issue 3, March 2018

DIARY WASTE WATER SAMPLE CHARACTERISTICS

Due to the dairy waste water sample contains Hardness, Total Dissolved Solids; Sulphates are more than the standard levels. The characteristics of dairy waste water sample given below the Table 4.2.

Table 4.2 Characteristics of dairy waste water sample

CHARACTERISTICS	DIARY WASTE WATER VALUES	UNITS
pH	7.9	
Turbidity	31.9	NTU
Colour	Milk White color	
Temperature	26	°C
Ammonium nitrogen	47.04	mg/l
Calcium	116.94	mg/l
Total Dissolved solids	5800	mg/l
Total suspended solids	18200	mg/l
BOD	490	mg/l

DYE WASTE WATER SAMPLE CHARACTERISTICS

The characteristics of the dye waste water sample are given in the Table 4.3 such as PH, Turbidity etc., The characteristics of the water sample are before coagulation process.

Table 4.3 Characteristics of Dye waste water sample

CHARACTERISTICS	DYE WASTE WATER VALUES	UNITS
PH	4.2	
Turbidity	17.2	NTU
Colour	Pink colour	
Temperature	25.4	°C
Ammonium nitrogen	98	mg/l
Calcium	98.19	mg/l
Total Dissolved solids	5600	mg/l
Total suspended solids	6400	mg/l
BOD	324	mg/l

International Journal of Innovative Research in Science, Engineering and Technology

(A High Impact Factor, Monthly, Peer Reviewed Journal)

Visit: www.ijirset.com

Vol. 7, Issue 3, March 2018

SAGO WASTE WATER SAMPLE CHARACTERISTICS

Table 4.4 shows that sago waste water characteristics such as PH, Turbidity, Colour and etc are to be determined and the waste is then allowed to the treatment process.

Table 4.4 Characteristics of Sago wastewater sample

CHARACTERISTISCS	SAGO WASTE WATER VALUES	UNITS
PH	8.18	
Turbidity	28.2	NTU
Colour	Light white colour	
Temperature	26.5	°C
Ammonium nitrogen	126	mg/l
Calcium	94.18	mg/l
Total Dissolved solids	3600	mg/l
Total suspended solids	11800	mg/l
BOD	396	mg/l

COAGULATION PROCESS RESULT:

After the coagulation process the turbidity of the waste water are treated. And the sludge is collected for the further process. The treated waste water is now used for the agriculture purpose. The turbidity level of the coagulated water is given below in table 4.5

Table 4.5 Characteristics of treated wastewater sample

S.NO	SAMPLE TAKEN (ml)	DOSAGE OF COAGULAT (g)	DOMESTIC WASTE WATER RESIDUE (NTU)	DIARY WASTE WATER RESIDUE (NTU)	DYE WASTE WATER RESIDUE (NTU)	SAGO WASTE WATER RESIDUE (NTU)
1	200	0	35.6	31.9	17.2	28.2
2	200	1	30.3	28.7	16.5	27.2
3	200	2	28.1	26.3	14.5	25.4
4	200	3	25.8	22.4	14.4	25.2
5	200	4	20.4	18.3	20.4	23.2
6	200	5	17.5	20.8	17.5	26.2
7	200	6	20.5	19.5	20.5	20.5

International Journal of Innovative Research in Science, Engineering and Technology

(A High Impact Factor, Monthly, Peer Reviewed Journal)

Visit: www.ijirset.com

Vol. 7, Issue 3, March 2018

CHARACTERISTICS OF THE COAGULATED WATER:

Table 4.6 Waste water characteristics after treatment

S.NO	WASTE WATER SAMPLE	PH	TURBIDITY
1	Domestic waste water sample	7.4	17.3
2	Diary waste water sample	7.2	18.3
3	Sago waste water sample	6.7	23.2
4	Dye waste water sample	7.9	14.4

GRAPICAL REPRESENTAION OF THE CHARACTERICTICS OF WASTE WATER:

The charts are represents the characteristics of the waste water before and after the coagulation process. The limits of the waste water are not in the permissible limit. After treatment process it will be reduced certain level.

BEFORE COAGULATION:

PH (Presence of Hydrogen Concentration):

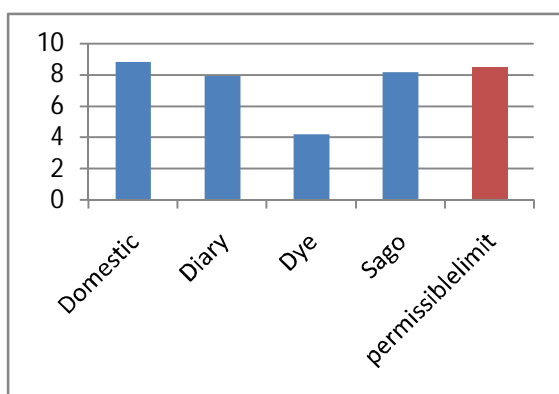


Fig 4.1 PH values

AFTER COAGULATION:

PH(Presence of hydrogen concentration):

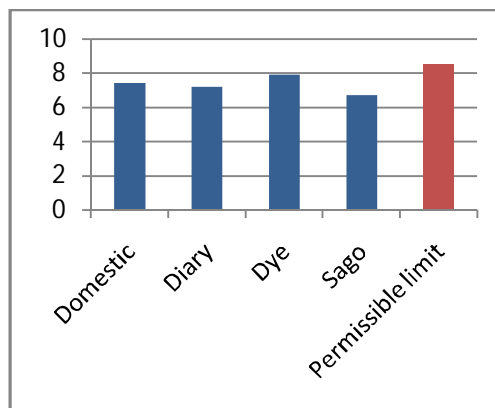


Fig 4.3 PH values

TURBIDITY:

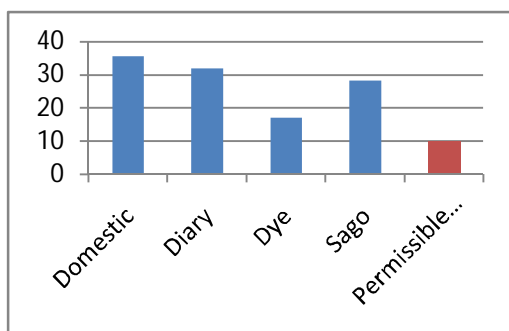


Fig 4.2Turbidity values

TURBIDITY

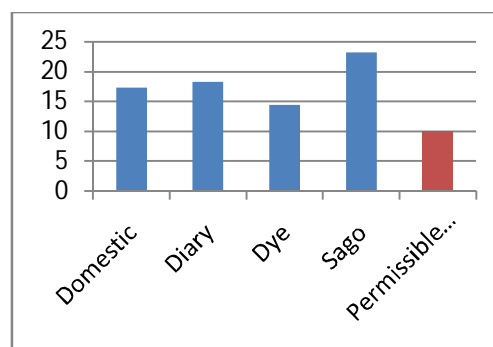


Fig 4.4 Turbidity values

International Journal of Innovative Research in Science, Engineering and Technology

(A High Impact Factor, Monthly, Peer Reviewed Journal)

Visit: www.ijirset.com

Vol. 7, Issue 3, March 2018

VI. CONCLUSION

The waste water samples characteristics are completely analysed. The water samples are then allowed to the coagulation process. After coagulation process the turbidity of the waste water are reduced certain level. It may be suitable for agriculture.

The total dissolved solids are exceeding the standard values as per the Indian norms of Manual of specification for drinking water quality standards in all the locations. Presence of dissolved solids in the waste water increases the sludge. The sludges are used for fertilizer production.

The treated or coagulated waste water is suitable for the agriculture purpose. After coagulation process the turbidity of the waste water sample is reduced in certain level. So it may be used for the any other purposed except drinking.

The waste water sludges are collected and some amount of natural organic fertilizer is added into the sludges. Then the fertilizer is used for the growth of the plant. The domestic, die, dairy and sago waste water fertilizers are compared in growth of the plant. Compared to the other fertilizers the dairy waste water fertilizer is increasing growth of the plant. So it is most suitable for growth of the plant.

REFERENCES

- [1] Jaya S.Pillai, Vijayan N , "Wastewater Treatment: An Ecological Sanitation Approach in a Constructed Wetland", Vol 2, Issue 10, ISSN: 2319-8753, 2013.
- [2] Saima Fazal, Beiping Zhang, Zhenxing Zhong, Lan Gao, Xuechuan Chen "Industrial Wastewater Treatment by Using MBR (Membrane Bioreactor) Review Study", Vol 7, Issue 11,2012.
- [3] Arya Krishnan, Anand Lali Neera , "Waste water treatment by Algae", vol 2, Issue 1. ISSN 2319-8753,2013.
- [4] Fayza A.Nasr-Hala S.Doma-Hisham S.Abdel-Halim-Saber A.El-Shafai "Chemical industry waste water treatment", Vol 4, Issue 3,2007.e
- [5] G. Boari I.M Mancini E. Trulli "Technologies for waste water and waste water treatment".CHEAM – options mediterraneennes, Vol 9, Issue 5, 1999.
- [6] R Kaur, SP Wani, AK Singh and K LalI "Waste water production, treatment and use in India" Journal of Food, Agriculture and Environment, vol. 7, no. 3-4, pp: 845–850, 2002.
- [7] Deependra Singh Shekhawat*, Ashish Bhatnagar, Monica Bhatnagar, Juhi Panwar, "Potential of Treated Dairy Waste Water for the Cultivation of Algae and Waste Water Treatment by Algae", International Scholarly Research NetworkISRN Microbiology Volume 2, Issue 1: 101-104, 2003.
- [8] Ibrahim M. Ismail, Ahmed S. Fawzy, Nabil M. Abdel-Monem ,Mahmoud H. Mahmoud Mohamed A. El-Halwany "Combined coagulation flocculation pre treatment unit for municipal wastewater" Journal of advanced research, Vol 6, Issue 4, 2004.
- [9] Pillai, Jaya .S., Vijayan, N., "Decentralized greywater treatment for nonpotable reuse in a vertical flow constructed wetland.", IEEE Journal Conference Proceedings, International Conference on Green Technologies, Thiruvananthapuram, India, pp.58-63, 18-20 Dec. 2012
- [10] APHA, *Standard Methods for the examination of water and wastewater*, 21st Edition, American Public Health Association, American Water Works Association and Water Environment Federation, 2005.
- [11] Guide lines for drinking water standard ISI 10500: 1991 and Guide lines for drinking water standard ISI 10500: 2012.
- [12] Environmental Engineering book Dr.S.Seetharaman and Er.M.Chinnasamy.