

International Journal of Innovative Research in Science, Engineering and Technology

(A High Impact Factor, Monthly, Peer Reviewed Journal)

Visit: www.ijirset.com

Vol. 7, Issue 5, May 2018

Smart Devices Using Internet of Things for Health Monitoring

Ankit Narendrakumar Soni

Department of Information Technology, Campbellsville University, Kentucky

ABSTRACT: IoT in human services is the central member in giving better clinical offices to the patients and encourages specialists and hospitals. The proposed framework here comprises different clinical gadgets, for example, sensors and online or versatile-based applications that impart system-associated gadgets and assist with checking and recording patients' well being information and clinical data. The proposed result of the paper is to manufacture a framework to give a world-class clinical guide to the patients even in the remotest territories without any hospitals in their zones by interfacing over the Internet and grasping data through about their well being status using the wearable gadgets gave in the unit utilizing a raspberry pi microcontroller which would have the option to record the patient's pulse, circulatory strain. The framework will be brilliant to imply the patient's relatives and their primary care physician about the patient's present well being status and full clinical data if any health-related crisis emerges. The gathered data can be utilized to investigate and anticipate ongoing issues or different disorders, such as coronary episodes in the fundamental stage using the information mining strategies that will likewise give the methodology favorable to dynamic.

KEYWORDS: Internet of Things, IoT in Healthcare, Patient Monitoring, Raspberry Pi, Smart Health Monitoring.

I. INTRODUCTION

The Internet of things is between the association of gadgets, applications, sensors, and system availability that upgrades these elements to assemble and trade information. The distinctive attribute of the Internet of Things in the social insurance framework is consistently observing a patient by checking different boundaries. It derives a decent outcome from the historical backdrop of such steady observing. Numerous such gadgets furnished with clinical sensors are available in the ICUs nowadays. There could be occasions where the specialist couldn't be cautioned in time when there is a crisis, despite 24 hours of observing. Likewise, there may be obstacles in imparting the information and data to the pro specialists and the concerned relatives and family members. The innovation that upgrades these highlights is now accessible yet isn't available and moderate by the more significant part of the individuals in developing nations, such as India. Henceforth these answers for these issues can be only a straightforward augmentation to the current gadgets which don't have these offices. This paper shows a Remote Health Monitoring System constrained by Raspberry pi. Raspberry Pi is a little installment card-sized single-board microcontroller made to upgrade the fundamental software engineering training in universities and developing countries. In this paper, a framework is intended to ceaselessly screen the crucial boundaries, such as pulse, circulatory strain, and internal heat level. The data is put away on a cloud worker database and can be shown through an online site or portable application by approved staff in particular. The thought probably won't be too new. However, we propose a flat out and modest strategy for the framework utilizing Raspberry pi. This framework's principal target is to refresh the information on the web and send an alarm to the specialists for any variation from the norm and foresee if the patient has any illness. The previous is practiced by utilizing the MySQL DB module to connect Raspberry pi to the database through the last is accomplished by the mix of Raspberry Pi and GSM module and the web interface. This framework has many future extensions as the information gathered by checking is so important and can be utilized for any examination by the clinical network.

International Journal of Innovative Research in Science, Engineering and Technology

(A High Impact Factor, Monthly, Peer Reviewed Journal)

Visit: www.ijirset.com

Vol. 7, Issue 5, May 2018

The significant point of the paper can be summed up as follows:

- A. To get consistent clinical data about a patient using IoT.
- B. Handling and characterization of data accumulated about the patient.
- C. To decipher and anticipate any disorder or confusion in the fundamental stage itself utilizing the information mining strategies that will likewise give the methodology beneficial to dynamic.
- D. To give the Internet of Things based social insurance arrangements whenever and anyplace.

II. RELATED WORK

Various specialists have proposed different models for IoT in Healthcare and the forecast of different kinds of sicknesses utilizing other procedures. This part centers around the work done in the equivalent area. Ahn et al. [1] executed a framework for estimating the physiological signs in sitting position, for example, ECG and BCG by utilizing a savvy seat that detects the non-compelled bio-flags and can be checked using an observing framework, for example, the one they had created giving an exemplary case of the utilization of IoT in social insurance. Almotiri et al. [2] proposed an arrangement of m-wellbeing that utilizes cell phones to gather constant information from patients and store it on organizing workers associated with internet empowering access just to specific, explicit customers. This information can be utilized for patients' clinical findings and is accomplished by using various wearable gadgets and body sensors arrange. Barger et al. [3] made a brilliant house office utilizing a sensor system to screen and track the patient's developments in hoke, and a model of the equivalent is likewise being tried. Their work's essential target is to check if their framework is fit to outmaneuver the personal conduct standards and have talked about the equivalent in their work. Chiuchisan et al. [4] proposed a system to forestall the dangers of persistent in keen ICUs. The proposed framework implies the patient's family members and specialists about any irregularity in their wellbeing status or their body developments and about the room's air with the goal that the fundamental prudent steps can be taken. Gupta et al. proposed a model that measures and records ECG and other essential well-being boundaries of the patient utilizing Raspberry Pi. They can be of great use for the hospitals and patients just as their relatives

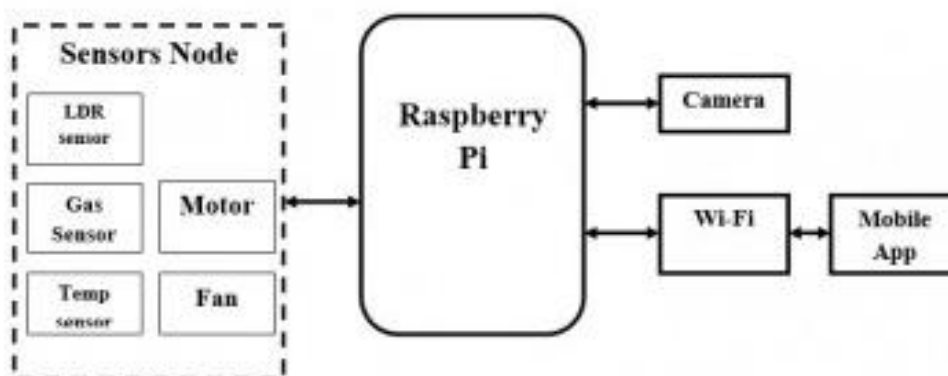


Fig.1 System Architecture

III. PROPOSED METHODOLOGY

This paper proposes a programmed framework to screen a patient's internal heat level, pulse, body developments, and circulatory strain. Further, we stretch out the current framework to anticipate if the patient is experiencing a constant issue or infection utilizing the different wellbeing boundaries and various side effects gotten by the framework.

International Journal of Innovative Research in Science, Engineering and Technology

(A High Impact Factor, Monthly, Peer Reviewed Journal)

Visit: www.ijirset.com

Vol. 7, Issue 5, May 2018

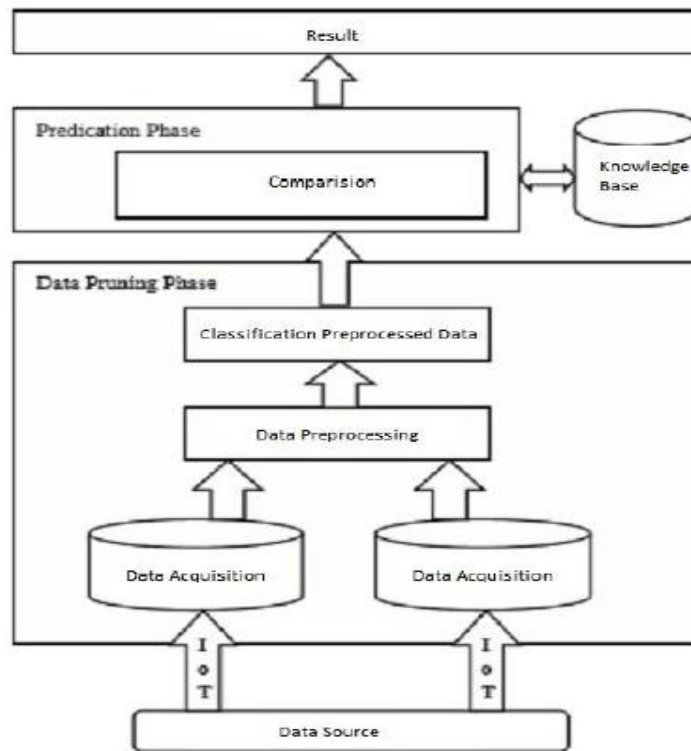


Fig.2Proposed Methodology

The above figure depicts how to recover the data about patient wellbeing status by checking different boundaries and utilizing similar data to foresee if the patient is experiencing an ongoing issue or other such infection. In level-1, natural information from different IoT gadgets is acquired and put away on the worker. These gadgets incorporate various sensors, such as temperature sensors, vibration sensors, BP sensors, and heartbeat sensors. Since a portion of the sensors gives simple yield which can't be utilized by raspberry pi, we first believe the superficial qualities into the mechanical structure and using converter IC[5]. At that point, using the raspberry pi on which Linux OS is introduced, we compose the code in python that peruses the qualities from the sensors and updates them into the database at standard spans. In level-2, the applicable data is acquired, thus separating, grouping, and classifying it from the information put away. This data is only the patient's ongoing wellbeing information and manifestations that the patient has. This data will be additionally utilized in the following level to anticipate if the patient is experiencing any ailment. This assists in making the framework keen and effective. In level-3, the investigation/prediction stage[6], we use information mining strategies to foresee the sort and nature of the infection or the issues for which the framework was structured utilizing computerized reasoning can additionally ad-lib the framework by making it more intelligent. Subsequently, we can construe the sickness or confusion by using the current information base and order the outcome in different classes, for example, Ideal, Normal, and With Symptoms and so on.

International Journal of Innovative Research in Science, Engineering and Technology

(A High Impact Factor, Monthly, Peer Reviewed Journal)

Visit: www.ijirset.com

Vol. 7, Issue 5, May 2018

IV. SYSTEM MODULES

A. Health Monitoring Section

This module involves the equipment segments of the framework that makes it IoT empowered and is utilized to record the wellbeing boundaries of the patient using different sensors. Here, Raspberry pi goes about as a focal worker. All the sensors are associated through the GPIO pins or using MCP3008 simple to-computerized convertor if their yield is in the simple structure as raspberry pi works just on advanced signs[7]. The pi peruses the consistent qualities and updates them to MySQL DB, which is then used to show them on the web interface.

B. Emergency Alert Section

This module especially manages the means to be taken after a variation from the norm is distinguished in the patient's soundness, for example, informing his/her relative just as the hospital. We have set up certain edge esteems in our program that will trigger a caution as email/SMS to the patient's family/specialist whenever crossed.

C. Health Status Prediction System

In this paper, we have proposed a framework in which patient's internal heat level, pulse, body developments and circulatory strain perusing results that are being observed by the framework. The different sensors are put on the patient's body and they take the readings and impart the comparing sign to the raspberry pi. The Raspberry Pi is a Mastercard measured single-board PC that works on Linux OS[8]. Here, different sensors are utilized to quantify the patient's internal heat level, pulse, Blood Pressure and their particular outcomes are sent to the information base by means of Raspberry Pi and can be observed from anyplace worldwide through the web encouraged by means of GSM module.

V. IMPLEMENTATION

In this paper, we have proposed a framework in which the patient's internal heat level, pulse, body developments, and circulatory strain perusing results that are being checked by the framework. The different sensors are put on the patient's body, and they take the readings and impart the comparing sign to the raspberry pi. The Raspberry Pi is a Visa measured single-board PC that works on Linux OS. Here, different sensors are utilized to quantify the patient's internal heat level, pulse, Blood Pressure, and their particular outcomes are sent to the information base through Raspberry Pi and can be observed from any place worldwide through the web encouraged through GSM module[9].

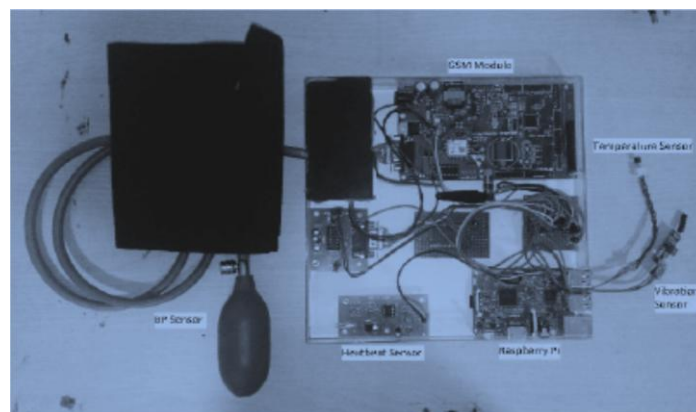


Fig 3: Experimental Setup

International Journal of Innovative Research in Science, Engineering and Technology

(A High Impact Factor, Monthly, Peer Reviewed Journal)

Visit: www.ijirset.com

Vol. 7, Issue 5, May 2018

The programming in Raspberry Pi is done in python language, and it sends the information identified with the patients' wellbeing to the worker associated through Internet. The subtleties can be effectively gotten online by legitimate confirmation, and well being status of the patient can be checked.

The different components to be utilized in the framework are:

A. Raspberry Pi :

The Raspberry Pi is a bank card size microcontroller with the highlights of a little pc. It is amazingly mainstream for advancement purposes since it offers the whole Linux worker and fringe gadget availability on a solitary chip and is very financially savvy. The GPIO pins accessible on the board are utilized for the info/yield reason and customized according to the need. For the proposed framework, we'll be using Raspberry Pi board rendition 3. The Raspberry Pi and IoT together end up being a pioneer development innovation in the medicinal services framework.



Fig 4:Raspberry Pi

B. Temperature Sensor:

For estimating the temperature LM35 sensor has been utilized, an IC sensor is used to quantify the temperature with the assistance of the simple yield corresponding to the weather. The LM35 is an IC temperature sensor with a yield voltage which is corresponding to the Celsius temperature. The LM35 is better than linear temperature sensors with alignment in Kelvin since one doesn't have to eliminate a substantial steady voltage from the yield an incentive to acquire the Celsius perusing. These remarkable highlights of the LM35 sensor make interfacing to a circuit amazingly simple.

C. Heartbeat Sensor:

The pulse is estimated utilizing a couple of LEDs and LDR and a microcontroller, and it takes a shot at the basics of optoelectronics. The infrared radiation is discharged by IR drove, and the surface reflects the infrared light. The power of radiation created electron-opening pair, which like this, delivers spillage current. This current accordingly developed is sent through a resistor to acquire the relative voltage. Along these lines, the more noteworthy is the power of the episode beam, the more significant estimation of voltage streaming across the resistor will be acquired. The pulse is estimated by putting the tip of the index finger upon the sensor. When the circuit detects the beat, a LED will begin squinting alongside your heartbeat. The yield is sent to a course or a smaller scale regulator to gauge BPM's heartbeat rate.

D. Vibration Sensor:

The vibration sensor utilized here faculties the shaking of the encompassing. Thus, we use it here to screen whether the patient is shuddering so the legitimate guide can be given. In a perfect world, the two contacts of sensor don't contact one another. When by any external power, these two contacts contact one another, and when the power is taken out, the sensor terminals separate. The on-board blue LED outwardly demonstrates correspondence on the web and actuation.

International Journal of Innovative Research in Science, Engineering and Technology

(A High Impact Factor, Monthly, Peer Reviewed Journal)

Visit: www.ijirset.com

Vol. 7, Issue 5, May 2018

E. BP Sensor:

We have utilized a manual circulatory strain screen for estimating the pulse, rather than a computerized one as it is less expensive. It is usually known as a sphygmomanometer, and the pack comprises an arm sleeve, a crushed bulb to swell the sleeve, a stethoscope, and a sensor to peruse the weight. Pulse is measure utilizing a gaseous tension sensor. The readings are as electrical signs. These readings are likewise changed over to advanced structure to be perused by the Raspberry Pi.

F. GSM Module:

The GSM module utilized here in this paper is GPRS/GSM Quadband Module (SIM900), which offers GPRS association with our framework and incorporates the SIM900 correspondence module from SIMCom. This module can acknowledge any sim card having its impressive number. The equivalent can send messages, settle on decisions, or make attachments to give web availability. The above sensors' information is continually refreshed in the MySQL data set, which is connected to the web UI utilizing the python code. The patient can sign in and screen their wellbeing status whenever. The framework is made shrewd to trigger an SMS/Email alert through the correct entryways, which guarantees a proficient conveyance. Additionally, the qualities from this sensor in blend with different manifestations which are asked from client dependent on starting finding are utilized to anticipate the ailment quiet is experiencing, assuming any, using the information mining procedure through our programming rationale and is shown because of examination alongside the subtleties of a specialist for the illness in their general vicinity.

VI. CONCLUSION

In this paper, we have introduced and demonstrated the model for a programmed framework that ensures a consistent checking of different wellbeing boundaries and forecasts of any ailment or turmoil that keeps the patient from the torment of paying constant visits to the emergency clinics. The proposed framework can be set-up in the emergency clinics, and an enormous measure of information can be acquired and put away in the online data set. Indeed, even the outcomes can be made to be gotten from versatile through an application. The framework can be additionally improved further by adding human-made reasoning framework segments to encourage specialists and patients. The information, comprising the clinical history of numerous patients' boundaries and comparing results, can be investigated utilizing information mining, looking for reliable examples, and efficient connections in disorder. For instance, if a patient's wellbeing boundaries change in a similar example like those of a past patient in the information base, the results can likewise be assessed. If the comparable examples are found repeatedly, it would be simpler for the specialists and clinical scientists to discover a solution for the issue.

REFERENCES

- [1]. B. G. Ahn, Y. H. Noh, and D. U. Jeong. A smart chair is based on a multi heart rate detection system. In *2015 IEEE SENSORS*, pages 1–4, Nov 2015.
- [2]. S. H. Almotiri, M. A. Khan, and M. A. Alghamdi. Mobile health (m-health) system in the context of IoT. In *2016 IEEE 4th International Conference on Future Internet of Things and Cloud Workshops (FiCloudW)*, pages 39–42, Aug 2016.
- [3]. Vishal Dineshkumar Soni. (2018). ROLE OF AI IN INDUSTRY IN EMERGENCY SERVICES. *International Engineering Journal For Research & Development*, 3(2), 6. <https://doi.org/10.17605/OSF.IO/C67BM>
- [4]. P. K. Sahoo, S. K. Mohapatra, and S. L. Wu. Analyzing big healthcare data with the prediction for the future health condition. *IEEE Access*, 4:9786–9799, 2016. ISSN 2169-3536.
- [5]. Vishal Dineshkumar Soni. (2018). IOT BASED PARKING LOT. *International Engineering Journal For Research & Development*, 3(1), 9. <https://doi.org/10.17605/OSF.IO/9GSAR>
- [6]. T. S. Barger, D. E. Brown, and M. Alwan. Health-status monitoring through analysis of behavioral patterns. *IEEE Transactions on Systems, Man, and Cybernetics-Part A: Systems and Humans*, 5(1):22–27, Jan 2005. ISSN 1083-4427.

International Journal of Innovative Research in Science, Engineering and Technology

(A High Impact Factor, Monthly, Peer Reviewed Journal)

Visit: www.ijirset.com

Vol. 7, Issue 5, May 2018

- [7]. Karunakar Pothuganti, Aredo Haile, Swathi Pothuganti, "A Comparative Study of Real Time Operating Systems for Embedded Systems" International Journal of Innovative Research in Computer and Communication Engineering, Vol. 4, Issue 6, June 2016.
- [8]. P. Gupta, D. Agrawal, J. Chhabra, and P. K. Dhir. IoT based smart healthcare kit. In *2016 International Conference on Computational Techniques in Information and Communication Technologies (ICCTICT)*, pages 237– 242, March 2016.
- [9]. Pothuganti, Karunakar, Jariso, Mesfin, Kale, Pradeep. 2017. A Review on Geo Mapping with Unmanned Aerial Vehicles. International Journal of Innovative Research in Computer and Communication Engineering. Vol. 5, Issue 1, January 2017.