

International Journal of Innovative Research in Science, Engineering and Technology

(A High Impact Factor, Monthly, Peer Reviewed Journal)

Visit: www.ijirset.com

Vol. 7, Special Issue 2, March 2018

An OTP Based Detection System for Review Spamming in Online Shopping

Aditya K¹, Kameshwaran B², Ismail M³, Praveen Chander J⁴

U.G[B.E] Students, Department of CSE, Velammal Institute of Technology, Chennai, Tamil Nadu, India ^{1,2,3},

Assistant Professor, Department of CSE, Velammal Institute of Technology, Chennai, Tamil Nadu, India ⁴

ABSTRACT: Nowadays, a big part of people rely on available content in online networking in their choices (e.g. surveys and criticism on a subject or item). The likelihood that anyone can leave an audit give a brilliant chance to spammers to compose spam surveys about items and administrations for various interests. Recognizing these spammers and the spam content is a hotly debated issue of research and in spite of the fact that an impressive number of studies have been done as of late toward this end, yet so far the strategies set forth still scarcely distinguish spam audits, and none of them demonstrate the significance of each separated element write. In this investigation, we propose a novel structure, named NetSpam, which uses spam highlights for demonstrating audit datasets as heterogeneous data systems to outline location method into a classification issue in such systems. Utilizing the significance of spam highlights help us to get better outcomes as far as various measurements investigated certifiable audit datasets from Yelp and Amazon sites. The outcomes demonstrate that NetSpam beats the current techniques and among four classifications of highlights; including audit behavioral, client behavioral, reviewlinguistic, user-linguistic, the first type of features performs better than alternate classifications.

KEYWORDS : *NetSpam, ReviewLinguistic, User-linguistic, Audit behavioral*

I. INTRODUCTION

Online Social Media gateways assume an influential part in data spread which is considered as a vital hotspot for makers in their promoting efforts and additionally for clients in choosing items and administrations. In the previous years, individuals depend a considerable measure on the composed audits in their basic leadership procedures, and positive/negative surveys empowering/demoralizing them in their choice of items and administrations. Likewise, composed surveys additionally help specialist co-ops to upgrade the nature of their items and administrations. These audits in this way have turned into a critical factor in achievement of a business while positive surveys can bring benefits for an organization, negative surveys can conceivably affect believability and cause monetary misfortunes. The way that anybody with any personality can leave remarks as audit, gives an enticing chance to spammers to compose counterfeit surveys intended to deceive clients' assessment. These deceptive surveys are then duplicated by the sharing capacity of web-based social networking and engendering over the web. The audits written to change clients' impression of how great an item or an administration are considered as spam, and are regularly composed in return for cash. In spite of this incredible arrangement of endeavors, numerous viewpoints have been missed or stayed unsolved. One of them is a classifier that can ascertain include weights that demonstrate each component's level of significance in deciding spam audits. The general idea of our proposed structure is to display a given survey dataset as a Heterogeneous Information Network (HIN) and to delineate issue of spam identification into a HIN classification issue.

II. LITERATURE REVIEW

In 2015, M. Ott, C. Cardie, and J. T. Hancock proposes that the Health Behavior Change Support Systems minitrack discusses how systems and services aimed at influencing health and/or wellbeing behavior can be designed, developed

International Journal of Innovative Research in Science, Engineering and Technology

(A High Impact Factor, Monthly, Peer Reviewed Journal)

Visit: www.ijirset.com

Vol. 7, Special Issue 2, March 2018

and implemented. Behavior Change Support Systems (BCSS), in general, are defined as "socio-technical information systems with psychological and behavioral outcomes designed to form, alter or reinforce attitudes, behaviors or an act of complying without using coercion or deception." Thus, all BCSSs are persuasive systems, i.e. they have been designed with the intent to influence user behaviors. Health BCSSs provide a prominent area to apply persuasive systems design.

In 2016, M. Ott, Y. Choi, C. Cardie, and J. T. Hancock proposes study about surveying the reliability of audits is a key in common dialect handling and computational semantics. Past work for the most part centers around some heuristic techniques or basic administered learning strategies, which confine the execution of this errand. This paper displays another approach, from the perspective of revising the mislabeled occurrences, to discover beguiling assessment spam. Segment a dataset into a few subsets, build a classifier set for every subset and select the best one to assess the entire dataset. Mistake factors are characterized to figure the likelihood that the occurrences have been mislabeled. The mislabeled examples are revised in light of two edge plans, dominant part and non-protest. The outcomes show huge upgrades in our technique as opposed to the current baselines.

In 2015, Ch. Xu and J. Zhang. Proposes the system about Online surveys that are broadly used by potential purchasers to settle on business choices. Tragically, fraudsters offer to compose spam audits for item advancement or contender slander, which drives online business holders to receive this kind of horrendous methodology to expand their benefits. These phony audits dependably deceive clients who shop on the web. In spite of the fact that current against spam methodologies have been turned out to be viable in identifying customary spam exercises, advancing spam plans can effectively cheat traditional testing by purchasing the remarks of countless yet real clients which are sold by particular web markets, i.e., User Cloud.

In 2016, F. Li, M. Huang, Y. Yang, and X. Zhuproposes client assessment system. These days buyer can pick up information about the items and administration from online audit assets, utilizing which they can decide. This may prompt Opinion Spam, where spammers may control and phony surveys to advance falsely or downgrade the items and different administrations. Feeling spam recognition is finished by separating important highlights from the content, and distinguishing the spam surveys utilizing machine learning procedures. This portrayal brings about a high dimensional component space. These highlights are immaterial, excess, and boisterous which may influence the execution of the classifier. Along these lines, a great element determination technique is required keeping in mind the end goal to accelerate the handling rate, prescient exactness. Transformative calculations for include choice can be utilized to deal with these high-dimensional component spaces which wipe out the boisterous and unimportant highlights. In this work, a viable half and half component determination system utilizing Cuckoo Search with Harmony seek is proposed and Naive Bayes is utilized for arranging the audit into spam and ham.

III. PROPOSED SYSTEM

➤ SYSTEM DESIGN

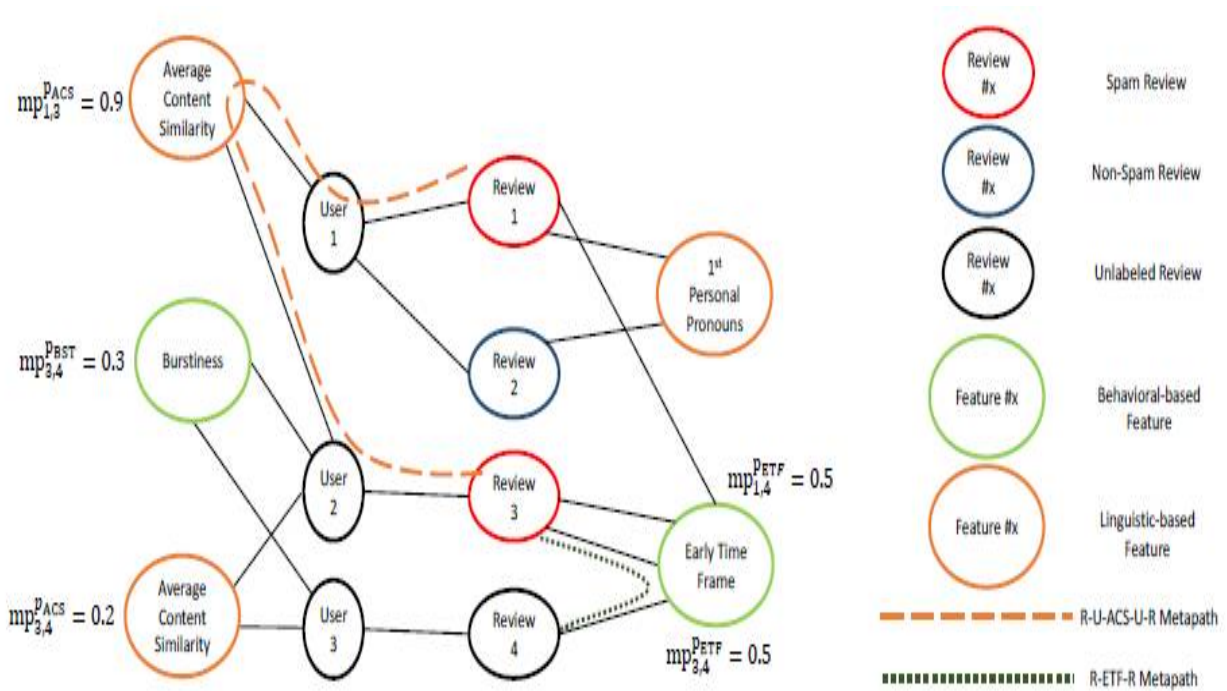
NetSpam can discover highlights significance even without ground truth, and just by depending on metapath definition and in view of qualities ascertained for each survey. NetSpam enhances the exactness contrasted with the state-of-the-craftsmanship regarding time many-sided quality, which exceedingly depends to the quantity of highlights used to recognize a spam audit; subsequently, utilizing highlights with more weights will brought about distinguishing counterfeit surveys less demanding with less time many-sided quality. Another Content Based Algorithm for spam highlights is proposed to decide the relative significance of each element and shows how viable every one of highlights are in distinguishing spams from typical audits.

International Journal of Innovative Research in Science, Engineering and Technology

(A High Impact Factor, Monthly, Peer Reviewed Journal)

Visit: www.ijirset.com

Vol. 7, Special Issue 2, March 2018



➤ PROPOSED ALGORITHM

This paper proposes a calculation for recommender frameworks that utilizes both positive and negative idle client models. In prescribing things to a client, recommender frameworks for the most part misuse thing content data and in addition the inclinations of comparative clients. Different sorts of substance data can be connected to things and these are valuable for judging client inclinations. For instance, in film proposals, a motion picture record may incorporate the chief, the on-screen characters, and audits. These kinds of data enable frameworks to figure refined client inclinations. We initially propose a probabilistic model that maps multi-ascribed records into a low-dimensional component space. The proposed display stretches out inactive Dirichlet assignment to the treatment of multi-ascribed information. We infer a calculation for assessing the model's parameters utilizing the Gibbs inspecting strategy. Next, we propose a probabilistic model to ascertain client inclinations for things in the element space. At long last, we build up a proposal calculation in view of the probabilistic model that works effectively for substantial amounts of things and client evaluations. We utilize a freely accessible film corpus to assess the proposed calculation exactly, as far as the two its suggestion exactness and its preparing proficiency.

International Journal of Innovative Research in Science, Engineering and Technology

(A High Impact Factor, Monthly, Peer Reviewed Journal)

Visit: www.ijirset.com

Vol. 7, Special Issue 2, March 2018

III. RESULTS

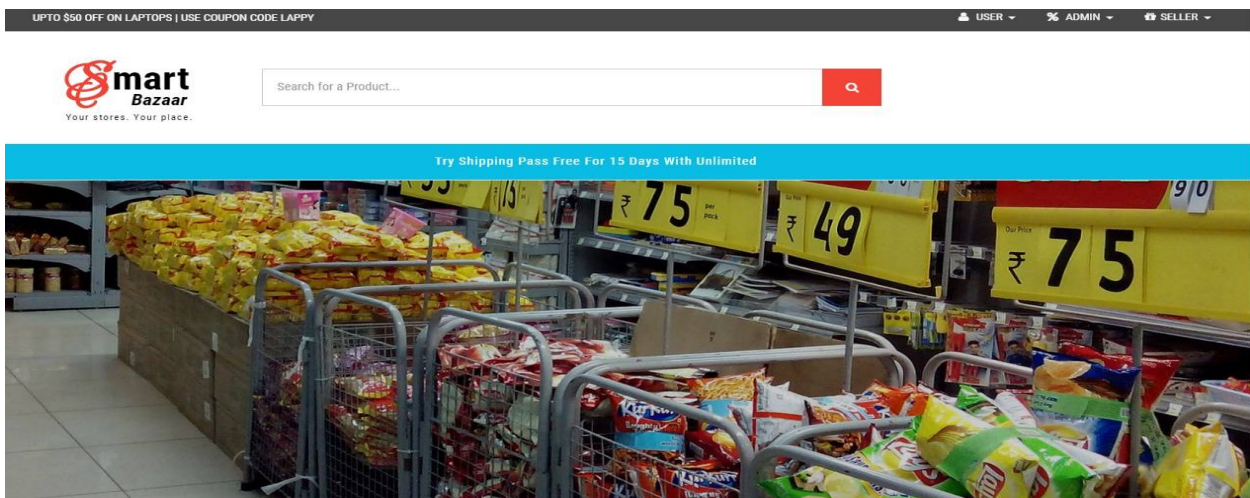
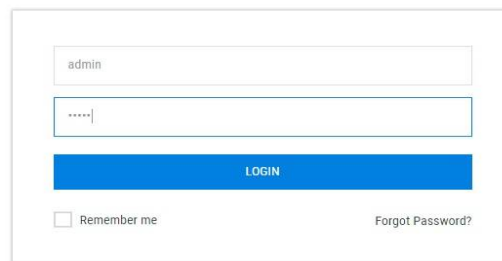


Fig.1

In fig.1, user will enter the homepage and will check for availability of products.

Login to your account



The login form is titled 'Login to your account'. It contains two input fields: the first is for the username, with 'admin' entered; the second is for the password, with dots indicating a masked field. Below the password field is a blue 'LOGIN' button. At the bottom left, there is a checkbox labeled 'Remember me'. At the bottom right, there is a link labeled 'Forgot Password?'.

Fig.2

In fig.2, Now the user will login to registered/signed account.

International Journal of Innovative Research in Science, Engineering and Technology

(A High Impact Factor, Monthly, Peer Reviewed Journal)

Visit: www.ijirset.com

Vol. 7, Special Issue 2, March 2018

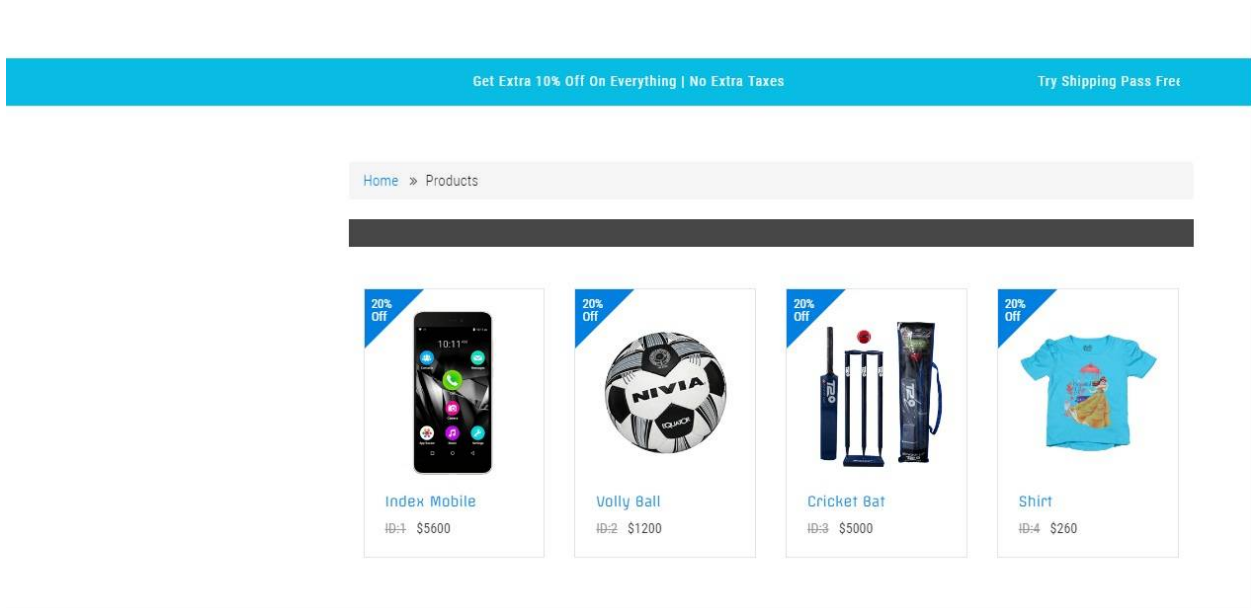


Fig.3

In fig.3, the user will be logged in and buy the desired/required products.

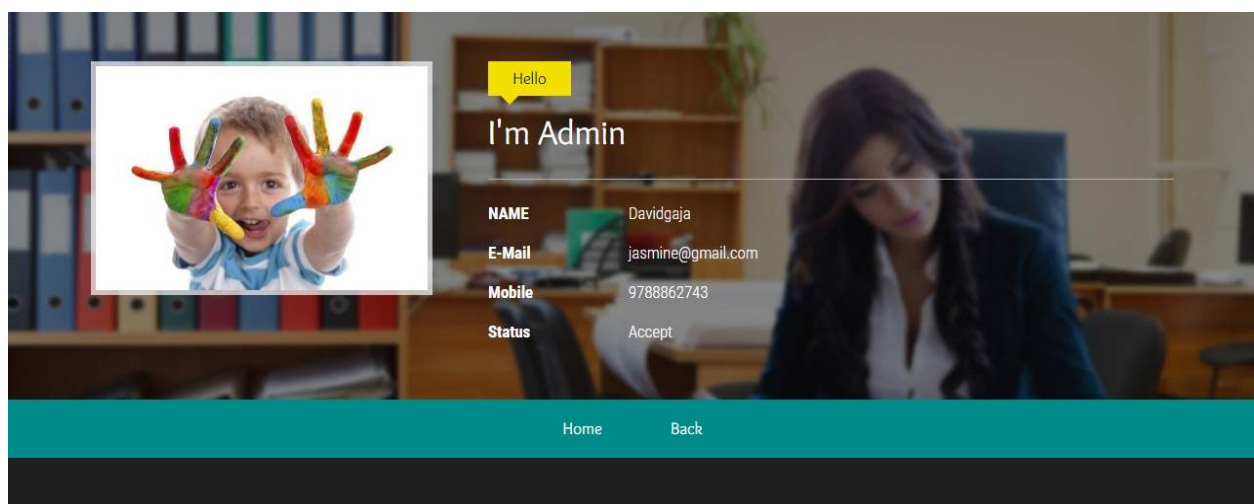


Fig.4

International Journal of Innovative Research in Science, Engineering and Technology

(A High Impact Factor, Monthly, Peer Reviewed Journal)

Visit: www.ijirset.com

Vol. 7, Special Issue 2, March 2018

In fig.4, Admin can login and will monitor the process of user and seller.

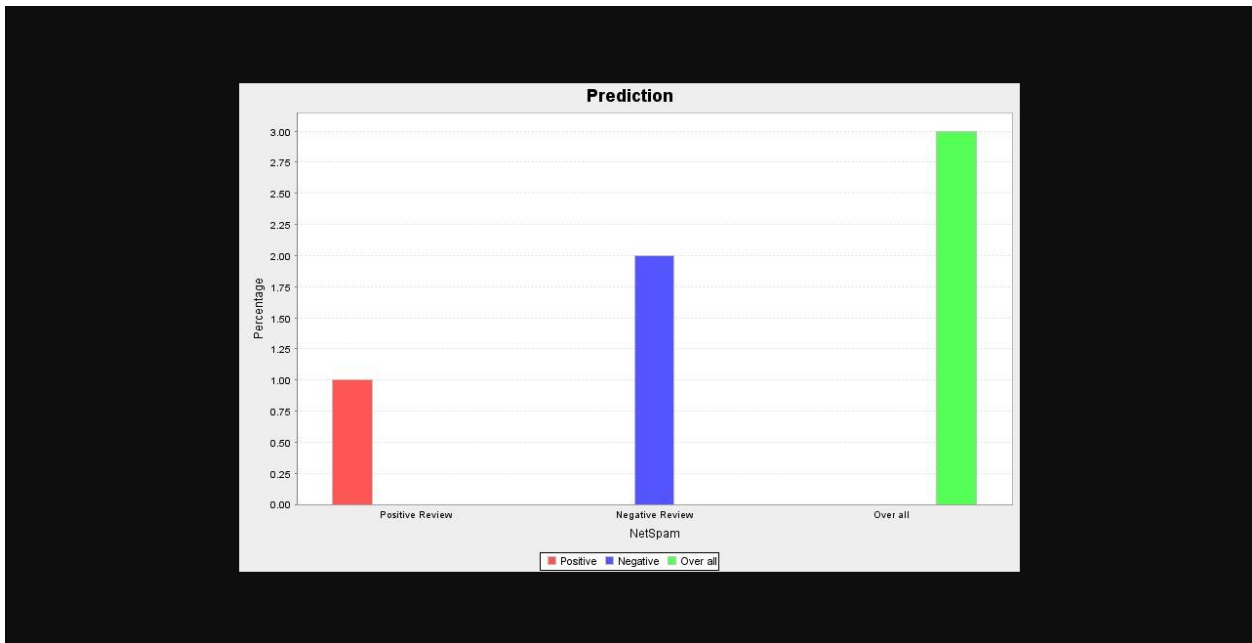


Fig.5

In fig.5, The Admin can check positive, negative and overall reviews of all products.

IV. CONCLUSION

This examination presents a novel spam location structure in particular NetSpam in view of a metapath idea and additionally another chart based strategy to name audits depending on a rank-based marking approach. The execution of the proposed system is assessed by utilizing two true marked datasets of Yelp and Amazon sites. Our perceptions demonstrate that ascertained weights by utilizing this metapath idea can be exceptionally compelling in distinguishing spam surveys and prompts a superior execution. Moreover, we found that even without a prepare set, NetSpam can compute the significance of each component and it yields better execution in the highlights' expansion procedure, and performs superior to anything past works, with just few highlights. In addition, in the wake of defining four principle classes for highlights our perceptions demonstrate that the reviews behavioral classification performs superior to anything different classes, regarding AP, AUC and additionally in the computed weights.

REFERENCES

- [1] J. Donfro, A whopping 20 % of yelp reviews are fake. <http://www.businessinsider.com/20-percent-of-yelp-reviews-fake-2013-9>. Accessed: 2015-07-30.
- [2] M. Ott, C. Cardie, and J. T. Hancock. Estimating the prevalence of deception in online review communities. In ACM WWW, 2012.
- [3] M. Ott, Y. Choi, C. Cardie, and J. T. Hancock. Finding deceptive opinion spam by any stretch of the imagination. In ACL, 2011.
- [4] Ch. Xu and J. Zhang. Combating product review spam campaigns via multiple heterogeneous pairwise features. In SIAM International Conference on Data Mining, 2014.
- [5] N. Jindal and B. Liu. Opinion spam and analysis. In WSDM, 2008.
- [6] F. Li, M. Huang, Y. Yang, and X. Zhu. Learning to identify review spam. Proceedings of the 22nd International Joint conference On Artificial Intelligence; IJCLI, 2011.

International Journal of Innovative Research in Science, Engineering and Technology

(A High Impact Factor, Monthly, Peer Reviewed Journal)

Visit: www.ijirset.com

Vol. 7, Special Issue 2, March 2018

- [7] G. Fei, A. Mukherjee, B. Liu, M. Hsu, M. Castellanos, and R. Ghosh. Exploiting burstiness in reviews for review spammer detection. In ICWSM, 2013.
- [8] A. j. Minnich, N. Chavoshi, A. Mueen, S. Luan, and M. Faloutsos. Trueview: Harnessing the power of multiple review sites. In ACM WWW, 2015.
- [9] B. Viswanath, M. Ahmad Bashir, M. Crovella, S. Guah, K. P. Gummadi, B. Krishnamurthy, and A. Mislove. Towards detecting anomalous user behavior in online social networks. In USENIX, 2014.
- [10] H. Li, Z. Chen, B. Liu, X. Wei, and J. Shao. Spotting fake reviews via collective PU learning. In ICDM, 2014.
- [11] L. Akoglu, R. Chandy, and C. Faloutsos. Opinion fraud detection in online reviews by network effects. In ICWSM, 2013.
- [12] R. Shebuti and L. Akoglu. Collective opinion spam detection: bridging review networks and metadata. In ACM KDD, 2015.
- [13] S. Feng, R. Banerjee and Y. Choi. Syntactic stylometry for deception detection. Proceedings of the 50th Annual Meeting of the Association for Computational Linguistics: Short Papers; ACL, 2012.
- [14] N. Jindal, B. Liu, and E.-P. Lim. Finding unusual review patterns using unexpected rules. In ACM CIKM, 2012.
- [15] E.-P. Lim, V.-A. Nguyen, N. Jindal, B. Liu, and H. W. Lauw. Detecting product review spammers using rating behaviors. In ACM CIKM, 2010.
- [16] A. Mukherjee, A. Kumar, B. Liu, J. Wang, M. Hsu, M. Castellanos, and R. Ghosh. Spotting opinion spammers using behavioral footprints. In ACM KDD, 2013.
- [17] S. Xie, G. Wang, S. Lin, and P. S. Yu. Review spam detection via temporal pattern discovery. In ACM KDD, 2012.
- [18] G. Wang, S. Xie, B. Liu, and P. S. Yu. Review graph based online store review spammer detection. IEEE ICDM, 2011.
- [19] Y. Sun and J. Han. Mining Heterogeneous Information Networks; Principles and Methodologies, In ICCCE, 2012.
- [20] A. Mukherjee, V. Venkataraman, B. Liu, and N. Glance. What Yelp Fake Review Filter Might Be Doing?, In ICWSM, 2013.