

A New Efficient Approach for Solving Multi-Objective Transportation Problems

Prof.(Dr). Deepak Raj

Panipat Institute of Engineering & Technology, Panipat, Haryana, India

ABSTRACT: Nowadays transportation plays an important role for economic growth of the country. Combination of transportation and mobility are directly involved with growth of financial system of the country and for that mature transportation infrastructure necessary. Not only that, modification in basic mathematical structure of transportation is required like simple objective function can be modified by multi objective function. This paper discusses multi-objective transportation problem, its different solution with limitation and provide better Information Communication Technology (ICT) based solution to avoid some limitation of multi-objective TP. It also discusses issues when multi-objective transportation associate with technology and its solution.

KEYWORDS: Multi-objective Transportation problem, Data Base, Knowledge Discovery IT

I. INTRODUCTION

Transportation is an essential part of modern society. It is not possible for each individual of family to produce his own food, clothing, etc. Goods can be produced more efficiently in factories, large farms, etc. but this necessitates the movement of both goods and people. The whole structure of society involves a trade-off between the economies of scale and focusing activities or groups of activities (factories, schools, office buildings, and cities) and the cost of transporting people from home to work places and goods from factories to consumers thus, the structure generates a problem known as Transportation Problem. The Transportation Problem is a classic Operations Research Problem where the objective is to determine the schedule for transporting goods from source to destination in a way that minimizes the shipping cost while satisfying supply and demand constraints. Although it can be solved as a Linear Programming problem, other methods exist.

The Transportation Problem (TP) was first developed and proposed by F. L. Hitchcock since 1941[1], [2]. It usually aims to minimize the total transportation cost [3]-[7]. Other objectives that can be set are a minimization of the total delivery time, a maximization of the profit, etc. The Hitchcock-Koopman's transportation problem is expressed as a linear transportation model as follows:

$$\text{Minimize } z = \sum_{i=1}^m \sum_{j=1}^n c_{ij} x_{ij}$$

$$\text{Subject to } \sum_{j=1}^n x_{ij} = a_i, i = 1, 2, \dots, m \quad (\text{Supply})$$

$$\sum_{i=1}^m x_{ij} = b_j, j = 1, 2, \dots, n \quad (\text{Demand})$$

$$x_{ij} \geq 0 \text{ for all } i \text{ and } j$$

Where,

x_{ij} = the amount of goods moved from origin i to destination j

c_{ij} = the cost of moving a unit amount goods from origin i to destination j

a_i = the supply available at each origin i

International Journal of Innovative Research in Science, Engineering and Technology

(A High Impact Factor, Monthly, Peer Reviewed Journal)

Visit: www.ijirset.com

Vol. 8, Issue 12, December 2019

b_j = the demand available at each destination j

m = total number of origins (Sources)

n = total number of destinations (Sinks)

This problem can be solved by classical transportation methods [17].

The transportation problem makes an important role in real life as for example minimization of total cost, consumption of certain scarce resources such as energy, total deterioration of goods during transportation, vehicle scheduling in public transit etc. From the investigation, the entire existing objectives in single objective transportation models are represented by quantitative information. This may cause the negligence of some crucial points which cannot be described by quantitative data [12], [13]. Real life decision making takes into account multiple, often conflicting, criteria. For example in shortest path problem, where cyclists aims to reach their destination in minimal time but along a safe route[9].

Factors that may influence route choice are road traffic, road condition and presence of dedicated cycling facilities. Therefore, it is reasonable to formulate cyclist route choice as a bi-objective problem with travel time as one objective, whereas all other route choice factors are combined into a second objective that we call attractiveness. That means in reality, considering only one objective of TP is not sufficient because it may not lead to the practical optimal solution. Thus the Decision Maker (DM) is rather to pay attention on several objectives on same time or in other words we can describe this as the limitation of single objective TP. This limitation can be sought out by generating multi-objective TP.

MULTI-OBJECTIVE TRANSPORTATION PROBLEM (MOTP):

The multi-objective transportation model is set to solve the transportation problem simultaneously associated with several objectives. Normally, existing multi-objective transportation models use a minimization of the total cost objective as one of their objectives. The other objectives may concern about delivery time, quantity of goods delivered, underused capacity, reliability of delivery, energy consumption, safety of delivery, etc. The multi-objective transportation problem with k objectives can be represented as [8]

$$\min f_1(x) = \sum_{i=1}^m \sum_{j=1}^n c_{ij}^1 x_{ij}$$

$$\min f_k(x) = \sum_{i=1}^m \sum_{j=1}^n c_{ij}^k x_{ij}$$

Subject to
$$\sum_{j=1}^n x_{ij} \leq a_i, i = 1, 2, \dots, m \quad \text{for all } i.$$

$$\sum_{i=1}^m x_{ij} = b_j, j = 1, 2, \dots, n \quad \text{for all } j.$$

$$\sum_{i=1}^m a_i = \sum_{j=1}^n b_j \text{ and } x_{ij} \geq 0 \text{ for all } i \text{ and } j$$

Where c_{ij}^k represents the coefficients related to x_{ij} variable for objective k .

There are many researchers adapting this model for their computational researches [1], [4], [16] and many applications of MOTP in real life problems. For example cyclist route problem [9].

MOTP is found to be applicable in urban transportation as transportation and its environmental impacts form a major component of urban environmental management. At the same time transportation and mobility are an important part of

International Journal of Innovative Research in Science, Engineering and Technology

(A High Impact Factor, Monthly, Peer Reviewed Journal)

Visit: www.ijirset.com

Vol. 8, Issue 12, December 2019

urban economics and the quality of life. A comprehensive, interdisciplinary approach is needed for analyzing urban transportation and its environmental impacts. A wide range of spatial and temporal scales and processes are involved in it and no single model can cover the entire range. Naturally, one has to adopt a multi - tiered approach and a series of models to describe alternative urban development and transportation scenarios and their multi – criteria assessment and comparative analysis [10].

Most of existing research works of a transportation problem has considered depot to customer relationship. However, the relationship between customer and customer is also critical because in fact vehicle route for each depot does not move from depot to customer and returns back from customer to depot as in the transportation model, it moves from depot to customer and moves forward to the other customers. So, it needs also to consider customer to customer relationship to obtain the neighbourhood customers. Then, two objectives are concerned. The first objective is to minimize the total transportation cost which is the baseline objective for all transportation models. It is the depot to customer relationship consideration using quantitative data. The second objective is to minimize the overall independence value between customer and customer, which means the consideration of customer to customer relationship [11]. And, finally this problem introduces an important MOTP to real world.

Recently there have been many studies to solve multiobjective transportation problem in which Michalewicz et al applied GM(Genetic Algorithm) to solve MOTP, L Li and K. K. Lai et al applied fuzzy approach to solve MOTP, Mistuo Gen et al used spanning tree concept for it. Here whatever solution we obtained by different approaches depends on the accuracy of past data gathered. So solution of MOTP is accurate provided the data is accurate and hence sometimes due to data error, solution of transportation problem fails. For example suppose our multiobjective transportation problem involves two parameters time and cost and our objective is to optimize both the parameters, but these two parameters depend on several other parameters like vehicle type, road condition, climatic conditions, traffic volume, RTO,PWD operations and so on.

The solution of MOTP depends on data related to cost and time from origin and destination which may not always correct due to some factors stated above and hence it is difficult to find actual optimum cost and time in practical world and in this case our transportation problem solution fails. To avoid such situation it is necessary to use Information communication Technology and Knowledge based system which will provide accurate data with its tools and techniques. So the main objective of this paper is to develop a set of mathematical techniques which is useful to find accurate solution of multi-objective as well as simple objective transportation problem with information communication technology. This researcher work also discussed how to improve road condition.

II. PROPOSED ICT BASED MODULE

TRANSPORTATION DATA COLLECTION MODULE

Data plays main role in decision-making process [15]. True data helps to discover knowledge, while affected data leads to improper knowledge. Transportation data is too much complex because so many parameters are included like Road condition, Season wise time differences, Climatic conditions, Traffic condition, RTO rules etc. Thus the following method is suggested for data collection.

International Journal of Innovative Research in Science, Engineering and Technology

(A High Impact Factor, Monthly, Peer Reviewed Journal)

Visit: www.ijirset.com

Vol. 8, Issue 12, December 2019

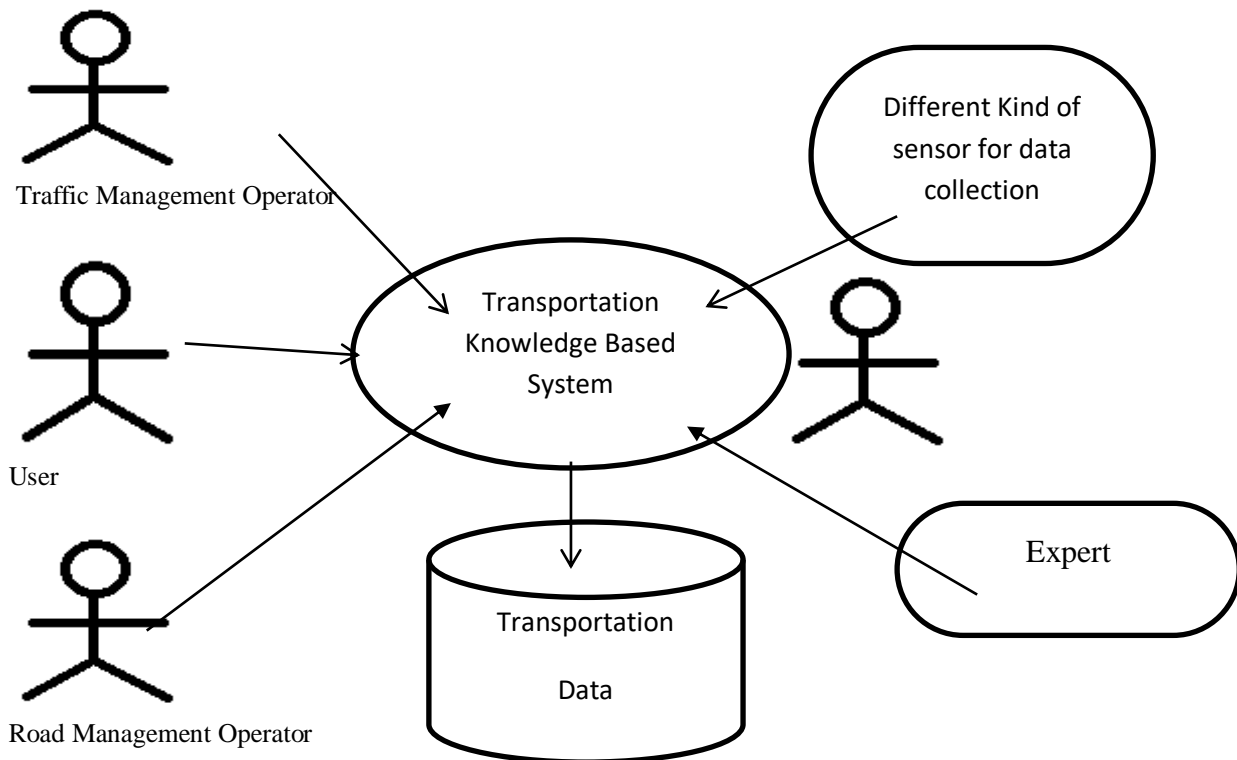


Fig: Transportation data collection module

According to above module different users are interacting with the system for data entry. All these users are required to enter data with the interface of the system. All users are required to be expert in data entry. Experts are also connected with the system; they are required to store/edit useful information related to the transportation i.e. which route is best with time and cost for a user in specific season with respect to the road condition, traffic volume, climatic conditions ,PWD operations etc.? Various other sources of data also exist in the system that provide data related to transportation and can affect in decision-making process.

International Journal of Innovative Research in Science, Engineering and Technology

(A High Impact Factor, Monthly, Peer Reviewed Journal)

Visit: www.ijirset.com

Vol. 8, Issue 12, December 2019

Processing Frame Work

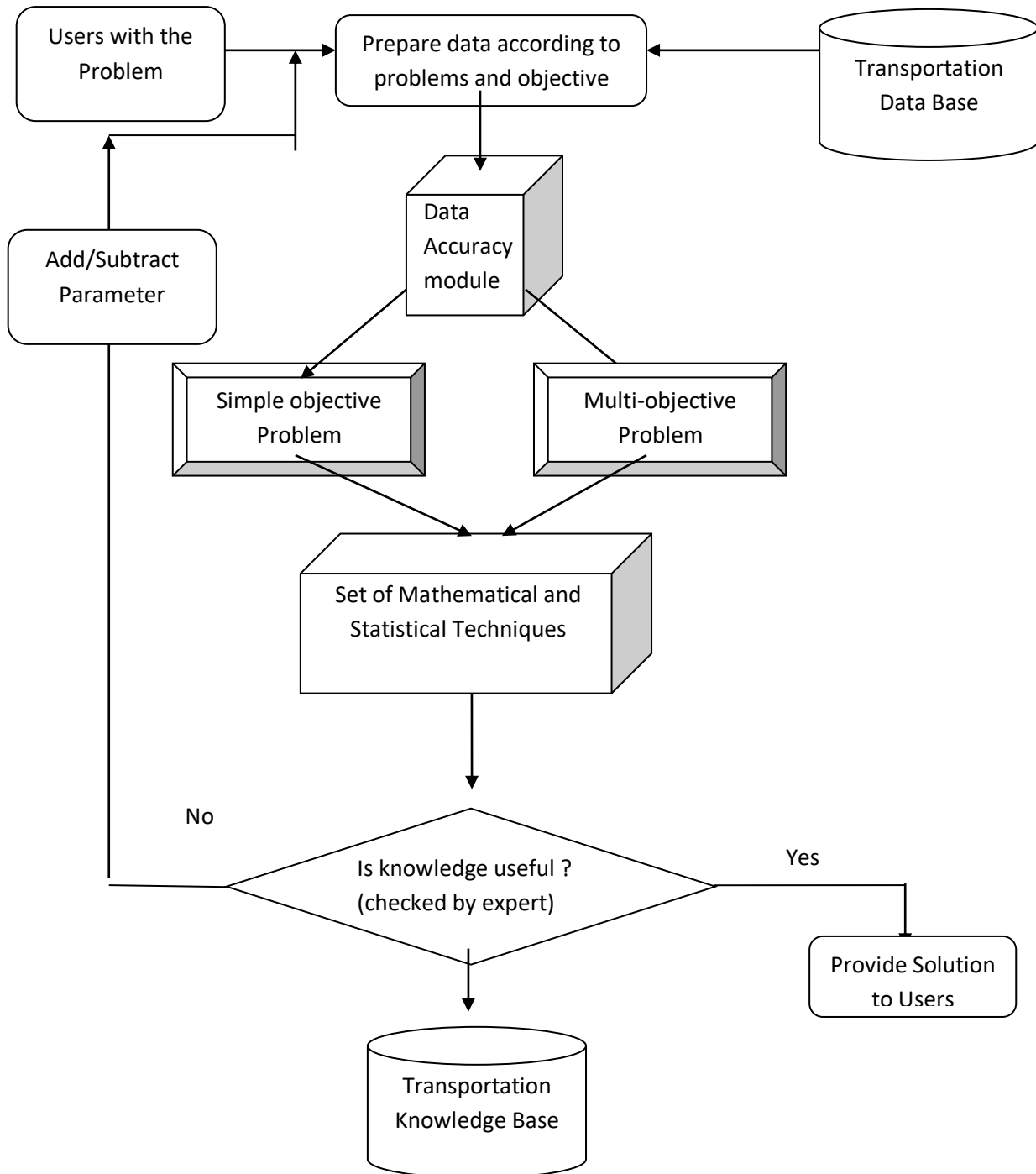


Figure: Process Diagram

International Journal of Innovative Research in Science, Engineering and Technology

(A High Impact Factor, Monthly, Peer Reviewed Journal)

Visit: www.ijirset.com

Vol. 8, Issue 12, December 2019

III. SET OF TOOLS AND MATHEMATICAL AND STATISTICAL TECHNIQUES

For finding the better knowledge, a set of technique is required which is discussed as follows:

- Fake data identification tool: This module can easily identify the fake data and remove from the data base. Eg: suppose user inserts data of Traffic and some electronics device or sensor collects that data but if data is improper then with this tool it is easily identified and thereafter removed from the data base.
- Predictive Mathematical Model and Numerical Technique: These mathematical and statistical techniques play significant role for finding trends of data like: Road condition or Traffic condition data having some fixed trend. Such data can be converted in numerical form, thereafter easily predicts trend of traffic condition season wise and time wise on the road. Similar job can be done for the road condition.
- Road Condition: This technique finds road roughness index which is useful to predict which road is better to travel and alarms for the improvement of road condition.
- Developed Database and data warehousing technology (M. A. King, J. F. Elder IV et al. (1998)) can be used to store and retrieve large amounts of data; it can be in form of both text and image.
- Transportation Algorithm: Simple and Multi-objective technique and algorithm can be directly used according to user's problem.
- To find out the optimum pattern from large amount of data, here we use Data mining techniques (Cheng Soon Ong, MIMOS Berhad (2000)), (S. Lawrence, K. Bollacker et al., (1999)) which could give potential useful advice. Also, modelling and simulation technology can be used for prediction.
- For finding out the risk in two or more best ways researcher have developed risk analysis tools, which can be useful for selecting optimum pattern for users.
- Internet Technology played an important role for communication between users, experts-and our system. Note that users can have Internet connectivity M. A. King, J. F. Elder IV et al. (1998), if telephone service is available. In fact, under Optimum system, it is sufficient for a village to have a phone connection so that Internet could be accessed.
- A template is a set of styles and page layout settings that determines the appearance of a document. This template matches the printer settings that will be used in the proceeding and the CD-Rom. The use of the template is mandatory.

All above techniques play significant role for extracting better knowledge.

IV. KNOWLEDGE DISCOVERY

Successful application of knowledge discovery requires a user and task-centred view, focussing on the nature of the interactions between humans and that lead to discovery of knowledge [19]. Knowledge discovery has been described as the process of identifying and extracting useful and understandable information from large data sets [18]. The aim of this methodology is to processing on past data and extracting knowledge through it. Once data is collected from the users, database would contain valuable information for knowledge –based system to make decision for extracting best knowledge for the transportation problem. Process model for discovery of knowledge using application is described above. We focus on selection of route for Multi-objective transportation in day to day life, but same selection model can be applied for selecting best fertilizer, irrigation method etc. in agriculture by changing appropriate parameter.

V. CONCLUSION

Reduction of cost, time and other factors in transportation problem, if proposed transportation model based system developed with discussed mathematical techniques then it will be highly beneficial for users as well as operators of transportation system.

International Journal of Innovative Research in Science, Engineering and Technology

(A High Impact Factor, Monthly, Peer Reviewed Journal)

Visit: www.ijirset.com

Vol. 8, Issue 12, December 2019

REFERENCES

1. L. Li and K. K. Lai, "A fuzzy approach to the multiobjective transportation problem," Computers & Operations Research vol. 27, pp. 43-57, 2000.
2. K. C. Rao and S. L. Mishra, Operations research: Alpha Science International Ltd., 2005.
3. J. P. Ignizio, Linear programming in single- & multiple-objective system: Prentice-Hall, Inc., 1982.
4. S. T. Liu and C. Kao, "Solving fuzzy transportation problems based on extension principle," European Journal of Operational Research, vol. 153, pp. 661-674, 2004.
5. M. Sakawa, I. Nishisaki, and Y. Uemura, "Fuzzy programming and profit and cost allocation for a production and transportation problem," European Journal of Operational Research, vol. 131, pp. 1-15, 2001.
6. S. Chanas and D. Kuchta, "A concept of the optimal solution of the transportation problem with fuzzy cost coefficients," Fuzzy Sets and Systems, vol. 82, p. 299-305, 1996.
7. S. Chanas and D. Kuchta, "Fuzzy integer transportation problem," Fuzzy Sets and Systems, vol. 98, pp. 291-298, 1998.
8. M. Zeleny, Multiple criteria decision making: McGraw-Hill Book Company, 1982.
9. Andrea Raith, Multiobjective routing and transportation problem thesis, 2009.
10. Dr Kurt Fedra, "Sustainable urban transportation", the project SUTRA(EVK4-CT-1999-00013), pp.1-36.
11. Wuttinan Nunkaew and Busaba Phruksaphanrat, "AMultiobjective Programming for Transportation Problem with the Consideration of both Depot to Customer and Customer to Customer Relationships", the International Multi Conference of Engineers and Computer Scientists Vol III MECS 2009.
12. C. T. Chen, "A fuzzy approach to select the location of the distribution center," Fuzzy Sets and Systems, vol. 118, pp. 65-73, 2001.
13. J. Korpela, A. Lehmusvaara, and M. Tuominen, "Customer service based design of the supply chain," International Journal of Production Economics, vol. 69, pp. 193-204, 2001.
14. P. Herabat and A. Tangphaisankun, "Multi-Objective Optimization Model using Constraint-Based Genetic Algorithms for Thailand Pavement Management" Journal of the Eastern Asia Society for Transportation Studies, Vol. 6, pp. 1137 - 1152, 2005.
15. M.S. Chen , J. Han, P.S. Yu, Data Mining: "An overview from a Database Perspective" , IEEE Transactions on Knowledge and Data Engineering, Vol. 8, No.6, pp. 866-883, 1996.
16. E.E. Ammar and E.A. Youness, " Study on multiobjective transportation problem with fuzzy numbers with fuzzy numbers", Applied Mathematics and computation ,Vol. 166, pp. 193-204, 2001.
17. J. K. Sharma, Operations Research Theory and Applications, Macmillan India Ltd book second edition 2003.
18. S. Lawrence, K. Bollacker, C. L. Giles, " Indexing and Retrieval of Scientific Literature" Eight International Conference on Information and Knowledge Management, pp. 139-146, 1999.
19. W. J. Frawley, G. Piatetsky-Shapiro and C. J. Matheus., "Knowledge Discovery in Databases: An overview , "In G. Piatetsky-Shapiro and W. J. Frawley, editors, Knowledge Discovery in Databases, AAA/MIT Press, pp. 1-27, 1991.