

International Journal of Innovative Research in Science, Engineering and Technology

(A High Impact Factor, Monthly, Peer Reviewed Journal)

Visit: www.ijirset.com

Vol. 8, Issue 3, March 2019

Partial Replacement of E-Plastic Waste as Coarse-Aggregate in Concrete

P. Akash¹, M. Logesh², A.K. Mohamed Akram³, S. Mohamed Ashraf Ali⁴, P. Balamurugan⁵

U.G Student, Department of Civil Engineering, Dhanalakshmi Srinivasan Institute of Technology, Trichy,
Tamilnadu, India.¹

U.G Student, Department of Civil Engineering, Dhanalakshmi Srinivasan Institute of Technology, Trichy,
Tamilnadu, India.²

U.G Student, Department of Civil Engineering, Dhanalakshmi Srinivasan Institute of Technology, Trichy,
Tamilnadu, India.³

U.G Student, Department of Civil Engineering, Dhanalakshmi Srinivasan Institute of Technology, Trichy,
Tamilnadu, India.⁴

Assistant Professor, Department of Civil Engineering, Dhanalakshmi Srinivasan Institute of Technology, Trichy,
Tamilnadu, India.⁵

ABSTRACT: The administration and reusing of e plastic waste is quickly developing as it is a profitable asset of it enterprises and it is dangerous substances and with low reusing rate the use of e plastic waste materials is an incomplete answer for natural and biological issues. As the utilization of e plastic waste will diminish the total expense and gives a decent solidarity to the structures and streets. It will reduce the landfill cost and it is energy saving. The e plastic waste comprises of disposed of plastic waste from the old pc's tv's fridges radios these plastics are non biodegradable parts of e Plastic waste as an incomplete substitution of the coarse or fine totals.

A test think about is made on the usage of e squander particles as fine and coarse totals in cement with a rate substitution going from 0% 10% 20% and 30% on the quality criteria of m20 concrete. Compressive quality rigidity and flexural quality cement with and without e squander plastic as totals was watch which exhibits a good strength. The feasibility of utilizing E-waste plastic particles as partial replacement of coarse aggregate has been presented. In the present study, compressive strength was investigated for Optimum Cement Content and 10% E-plastic content in mix yielded stability and very good in compressive strength of 53 grade cement.

KEYWORDS: E plastic waste, Concrete, Compressive strength

I. INTRODUCTION

The world's yearly utilization of plastic materials has expanded from around five million tons with in the 1950 s to 100 million tons as of late prompting to a big increase within the quantity of plastic waste generation. Today one of the better growing areas is electronic waste generation. E squander portrays out of date broken inexactly disposed of surplus electrical or electronic gadgets. Because according to the Rajya Territory Analysis Republic of India, supplying and annual waste storage can be a downside in the Indian Republic. Out of whole e-waste production eighty to eighty fifth discarded as landfill, which may involve or unharness sure toxic gases into air, could have a directly or indirectly harmful to human health and environment. 5% was therefore recycled to prevent pollution and to protect the

International Journal of Innovative Research in Science, Engineering and Technology

(A High Impact Factor, Monthly, Peer Reviewed Journal)

Visit: www.ijirset.com

Vol. 8, Issue 3, March 2019

environment, there is a requirement for the use of e waste for a variety of purposes. The best way to use concrete as a coarse mixture in the gift study was to prepare the coarse aggregate by the recycled plastics. A property choice to modify the plastic waste. Recent innovations in technology science have altered the terrible lifestyle of someone who was on the far side of abundant electronic equipment reached earlier is currently on the cheap costs. Today people tend to buy a brand new appliance rather than urge the older one to repair it. However, this trend does not only result in an increase in the volume of electrical and electronic waste, but also poses a serious threat to public health. The markets of these merchants have grown rapidly in recent years USEPA as calculable amounts to 5 to 100% of the total annual waste generation of which only five hitters are required by the quantity. During the day waste that needs to be eco-friendly disposed of increases. The copper fraction with aluminum gold in the iron copper and various metals in e waste is longer than hours., whereas plastics account for regarding half hour and also the venture some pollutants comprise slowly about 2.70%.The e-waste inventory supported this degeneration rate and was estimated at 14618000 tons in India in 2012.In India, waste is generated in top cities such as urban center bombardment and metropolitan areas In these cities a posh e-waste handling infrastructure has developed in the main based on an extended tradition of waste employment. Sixty-five cities in India generate quite hours of the e-waste generated in India. 10 states produce the seventieth of e-waste in India. Geographic area ranks 1st followed by province, Andhra of e-waste generating states in India. Among 10 cities generating e-waste Bombay ranks first followed by urban center Chennai, Kolkata, Ahmadabad, Hyderabad, Pune, Surat and Nagpur, Bangalore. There are 2 tiny WEEE/E-waste disassembly facilities functioning in Chennai metropolis there is no giant scale organized e-waste employment facility in India and also the entire recycling exists in unorganized sector. The major objective of this task is to scale back as for as doable the buildup of used and discarded electronic and electrical equipment's and transfer waste into socially and industrially helpful material exploitation straight forward, low price and environmental friendly technology. During this project coarse mixture is partially replaced by electronic waste up to 10%,20%, and 30%. Then in these mix 10%, 20% and 30% of fly ash is also added by partial replacement of cement and all these mixes are checked for its compressive strength.

II. OBJECTIVE

- (a) The main goal of this research paper is to find out how hard and plastic waste materials can be used in concrete as a substitute for gross aggregation and analysis. Mechanical properties such as flexural strength and workability of compressive strength.
- (b) To examine how recycled plastic waste Could be used in concrete.
- (c) Identify the optimal percentage plastic replacement with coarse aggregate.
- (d) To develop and improvise the technology for e-waste management.

III. TYPES OF TESTS USED

- COMPRESSIVE STRENGTH
- TENSILE STRENGTH
- FLEXURAL STRENGTH

COMPRESIVE STRENGTH:

Compressive strength or strength of compression material or structure's ability to withstand loads that tend to decrease size in contrast traction resistant to loads and Tend to compressive elongationstrength is a key value in structural design.

International Journal of Innovative Research in Science, Engineering and Technology

(A High Impact Factor, Monthly, Peer Reviewed Journal)

Visit: www.ijirset.com

Vol. 8, Issue 3, March 2019

TENSILE STRENGTH:

Tensile strength the material's resistance to tension breakage.

FLEXURAL STRENGTH:

Is also referred to as the rupture or bending strength module or the resistance to transverse rupture is a material property defined as material stress. Just the flexural strength is the highest stress in the material before it yields in a flexural strength.

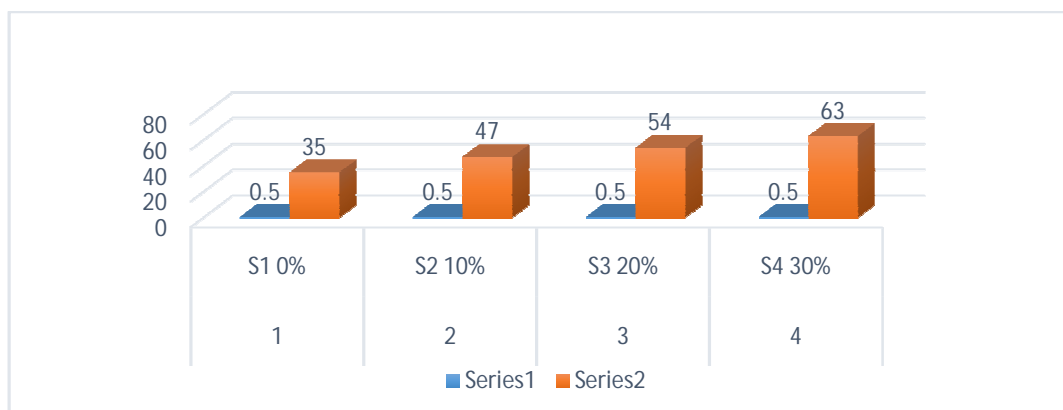
EXPERIMENTAL SETUP:

At this stage, the collection of required materials and the data required for the design of the mixture is obtained through sieve analysis and specific gravity. Sieve analysis is performed from different fine aggregate and coarse aggregate samples and samples are selected according to the requirement. Specific gravity tests are performed for fine and coarse aggregation of the different materials used according to the Indian standard specification.

Test on fresh concrete

The cone test is slumping used to identify performance or consistency of the prepared concrete mix. Slump cone test is used to identify the performance or consistency of the prepared concrete mix. S1 is 0 percent as standard concrete s2 with 10 percent e plastic in concrete s3 with 20 percent e plastic s4 with 30 percent e plastic with 0.5 w/c ratio. Results are given in table below.

| S.NO. | PERCENTAGE OF REPLACEMENT | W/C RATIO | SLUMP VALUE IN (MM) |
|-------|---------------------------|-----------|---------------------|
| 1 | S1 0% | 0.5 | 35 |
| 2 | S2 10% | 0.5 | 47 |
| 3 | S3 20% | 0.5 | 54 |
| 4 | S4 30% | 0.5 | 63 |



Workability Graph.

International Journal of Innovative Research in Science, Engineering and Technology

(A High Impact Factor, Monthly, Peer Reviewed Journal)

Visit: www.ijirset.com

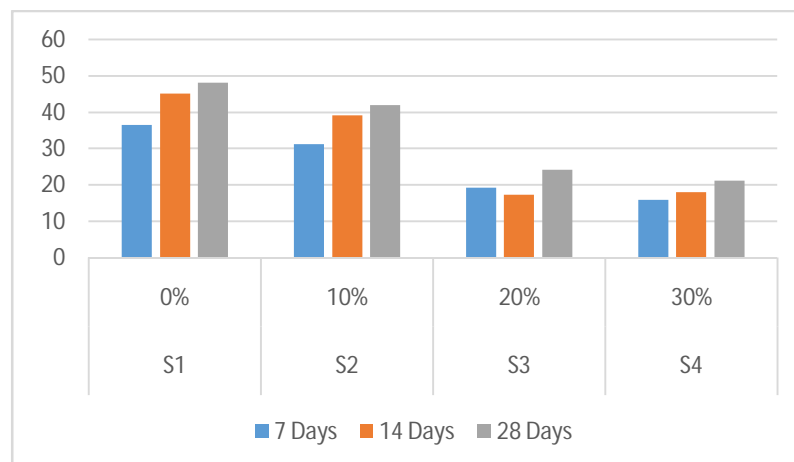
Vol. 8, Issue 3, March 2019

IV. TESTS ON HARDEN CONCRETE

Compressive strength test results:

Presents the concrete's compressive strength mixtures with and without plastic aggregates where 0% is s1 standard mix s2 with 10% s3 e plastic 20% of e plastic and s4 with 30% of e plastic and graph 2 show the compressive strength graphics of all s1 s2 s3 and s4 lasting 7 ,14 and 28 days.

| Mix Specification | S1 | S2 | S3 | S4 |
|-----------------------|-------|-------|-------|-------|
| Proportion of E-waste | 0% | 10% | 20% | 30% |
| 7 Days | 36.5 | 31.18 | 19.3 | 15.89 |
| 14 Days | 45.11 | 39.25 | 17.21 | 18.03 |
| 28 Days | 48.18 | 42.07 | 24.1 | 21.15 |



Compressive strength gained in number of days

Tensile strength test results:

Tensile strength of all concrete mixtures in which a cylinder specimen of 300 mm length and 150 mm is used to determine Divided tensile strength concrete the diameter compressed in the Testing machine for compression and graph 3 illustrates Split tensile strength graphical representations of all mixes s1, s2, s3 and s4 for 7, 14 and 28 days as given below.

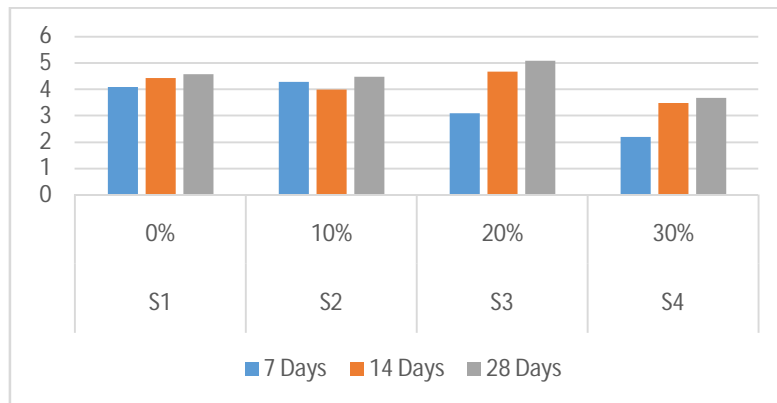
International Journal of Innovative Research in Science, Engineering and Technology

(A High Impact Factor, Monthly, Peer Reviewed Journal)

Visit: www.ijirset.com

Vol. 8, Issue 3, March 2019

| Mix Specification | S1 | S2 | S3 | S4 |
|-----------------------|------|-----|-----|-----|
| Proportion of E-waste | 0% | 10% | 20% | 30% |
| 7 Days | 4.1 | 4.3 | 3.1 | 2.2 |
| 14 Days | 4.45 | 4 | 4.7 | 3.5 |
| 28 Days | 4.6 | 4.5 | 5.1 | 3.7 |



Split tensile strength gained in number of days

Flexural Strength Test Results:

Flexural strength of all concrete mixtures in which the specimen's. The strength of flexure is expressed as a rupture fb module and size beams for testing purposes 150 × 150 × 700 mm were cast for 28 days in clean water and tested in a universal test machine and graph show the graphics of the split. Traction s1, s2, s3 and s4 for 7 Days 14 and 28.

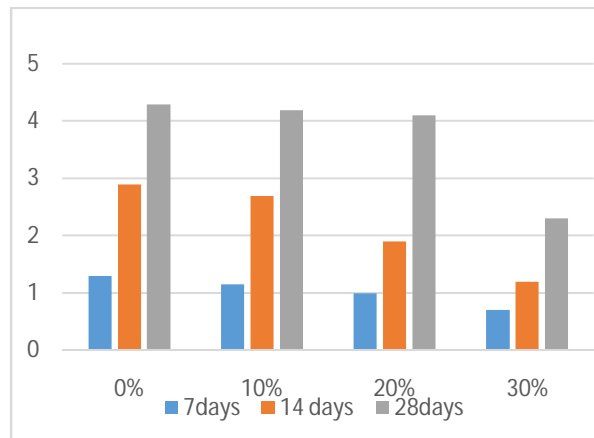
| Mix specification | S1 | S2 | S3 | S4 |
|-----------------------|-----|------|-----|-----|
| Proportion of E-waste | 0% | 10% | 20% | 30% |
| 7days | 1.3 | 1.15 | 1 | 0.7 |
| 14 days | 2.9 | 2.7 | 1.9 | 1.2 |
| 28days | 4.3 | 4.2 | 4.1 | 2.3 |

International Journal of Innovative Research in Science, Engineering and Technology

(A High Impact Factor, Monthly, Peer Reviewed Journal)

Visit: www.ijirset.com

Vol. 8, Issue 3, March 2019



Flexural strength gained in number of days

V. CONCLUSION

According to the test results we can conclude that:

- 1.Utilization of partial substitution of e squander as a coarse aggregate is the best alternative for the conventional concrete.
- 2.The disposal of e waste can be utilized as a coarse aggregate provides the decrease in weight on landfill arranging and environmental pollution.
- 3.The e-waste concrete density is less as compared with the traditional cement which reduces the cost of the concrete and produces the light weight solid structure.
- 4.The results show that the good strength, greater durability and addition of e-waste exhibits increase in compressive strength up to 15% replacement.
- 5.The use of EWC is potential to improve the mechanical and chemical properties which rends eco-friendly concrete.
- 6.The corrosion resistance reaction shows that the EWC does not tempted by Sulphur under 2.1 N curing conditions of H_2SO_4 .
7. Alkali aggregate reaction exhibits the beam cause without damage and crack under 0.5 pH curing conditions of Hcl.

REFERENCES

- 1) Ahamed Shayan, Aimin Xu, "Val added utilization of waste glass in concrete", Cement and Concrete Research vol. 34 (2004) pp 8189.
- 2) Code of Indian standard specifications IS: 383-1970.
- 3)Electronics Recycling', Institute of Scrap Recycling Industries Inc. (ISRI)
- 4)Hai yong kings, "Electronic waste recycling: A review of U.S. Infrastructure and technology Options, Resources, Conservation and Recycling vol. 45 (2005) pp 368400. Code book IS 456-2000 for concrete structure.
- 5) IS 10262-2009 Code Book.
- 6) P.M. Subramanian, "Plastic recycling and waste Management in the US" Resources, Conservation and Recycling vol. (28) pp 253263 on net.
- 7) Verma S (2008), "Roads from Waste Plastic", The Indian concrete journal.