

## International Journal of Innovative Research in Science, Engineering and Technology

(A High Impact Factor, Monthly, Peer Reviewed Journal)

Visit: [www.ijirset.com](http://www.ijirset.com)

Vol. 8, Issue 5, May 2019

# A Survey on Design Image-Based Captcha Using Deep Learning Technique

Amit Pancharas, Sharda Wanve, Komal Thombare

Department of Computer, Sinhgad Institute of Technology & Science, Narhe Pune, India

**ABSTRACT:** The capacity of programmers to infiltrate computer systems using computer attack programs and bots prompted to the development of Captchas, or Completely Automated Public Turing Tests to Tell Computers and Humans Apart. The Text Captcha is the most well-known Captcha conspire given its simplicity of development and ease of use. However, the hackers and programmers have reduced the expected security of Captchas, leaving websites open to attack. Text Captchas are still broadly utilized on the grounds that it is trusted that the attack speeds are moderate, regularly two to five seconds for each picture, and this isn't viewed as a basic risk. In this paper, a novel image-based Captcha known as Style Area Captcha (SACaptcha) is proposed, which depends on semantic data understanding, pixel-level segmentation and deep learning techniques. Experimental demonstrated that text Captchas are no longer secure, the proposed SACaptcha shows the development of image-based Captchas using deep learning techniques for increasing the security purpose.

**KEYWORDS:** Captcha, Text-Based, Security, Deep Learning, Convolutional Neural Network, Image-Based, Style Transfer

## I. INTRODUCTION

The substantial and automated access to Web resources through robots has made it essential for Web service providers to make some anticipation about whether "user" is a human or a robot. A Human Interaction Proof (HIP) like Completely Automated Public Turing test to tell Computers and Humans Apart (CAPTCHA) offers a way to make such a distinction. Captcha is a reverse Turing test used by Web service providers to secure human interaction assumed services from Web bots. Several Web services that include but are not limited to free e-mail accounts, submission of e-mail, online polls, chat rooms, search engines, blogs, password systems, etc. use Captcha as a defensive mechanism against automated Web bots. This paper presents various aspects of Captcha methods that include its types, generation methods, robustness against attacks and various usability aspects. It presents a review of existing Captcha schemes besides relative merits of text and image based on them. It illustrates working of Captcha and general methods used for their generation besides security and usability issues of Captcha methods. It provides guidelines to improve security control of Captcha methods against various possible attacks and guidelines to improve their usability. Also study the text based Captcha solving by deep learning techniques. The attackers easily retrieve the text using OCR technique from text-based Captcha. The proposed a new image-based Captcha technique known as Style Area Captcha (SACaptcha) that is based on the neural style transfer technique. To pass the test, users are required to click foreground style-transferred regions in an image based on a brief description. Unlike earlier image-based Captchas, SACaptcha relies on human understanding of semantic information and pixel-level segmentation, which seems to be more difficult for machines to solve.

## II. LITERATURE SURVEY

The paper [1] shows a main feature of such hollow CAPTCHAs is to use contour lines to form connected characters with the aim of improving security and usability simultaneously, as it is hard for state-of-the-art character recognition programs to segment and recognize such connected characters, which are however easy to human eyes. The analysis

# International Journal of Innovative Research in Science, Engineering and Technology

*(A High Impact Factor, Monthly, Peer Reviewed Journal)*

Visit: [www.ijirset.com](http://www.ijirset.com)

Vol. 8, Issue 5, May 2019

provides a set of guidelines for designing hollow CAPTCHAs, and a method from comparing security of different schemes. Advantages are: It improves usability. It finds a segmentation resistant mechanism that is secure and user-friendly simultaneously. Disadvantages are: Need to better design for getting better security.

In [2] paper, systematically analyzed the security of the two-layer Captcha. A novel two-dimensional segmentation approach is proposed to separate a Captcha image along both vertical and horizontal directions, which helps create many single characters and is unlike traditional segmentation techniques. Advantages are: It is a simple and effective method to attack the two-layer Captcha deployed by Microsoft, and achieves a success rate of 44.6%. It decreases time spent on data preparation and reduces manual labor. Disadvantages are: Need to design better two-layer or multi-layer Captchas with higher security levels than their predecessors.

The paper [3] introduces a novel approach to solving captchas in a single step that uses machine learning to attack the segmentation and the recognition problems simultaneously. The algorithm to exploit information and context that is not available when they are done sequentially. Advantages are: The breadth of distortions proposed algorithm is able to solve shows that it is a general solution for automatically solving captchas. It removes the need for any hand-crafted component, making given approach generalize to new captcha schemes. Disadvantages are: Need to perform reverse Turing tests.

The paper [4] presents a fast, fully parameterizable GPU implementation of Convolutional Neural Network variants. All structural CNN parameters such as input image size, number of hidden layers, number of maps per layer, kernel sizes, skipping factors and connection tables are adaptable to any particular application. We applied our networks to benchmark datasets for digit recognition (MNIST), 3D object recognition (NORB), and natural images (CIFAR10). Advantages are: The best adaptive image recognizers. No unsupervised pre-training is required. The implementation is 10 to 60 times faster than a compiler optimized CPU version. Disadvantages are: It requires more computing power.

A novel approach for automatic segmentation and recognition of CAPTCHAs with variable orientation and random collapse of overlapped characters is presented in this paper. The main purpose of this paper is to reduce vulnerability of CAPTCHAs from frauds and to protect users against cyber- criminal activities as well as to introduce a novel approach for recognizing either handwritten or damaged texts in ancient books, manuscripts and newspapers. Advantages are: It provides better segmentation of reCAPTCHAs. The required time for reCAPTCHA word breaking using extended approach is four times less than in approach of version 2011. It is robust technique. Disadvantages are: Need to protect users against cyber-criminal activities and Internet threats.

## III. EXISTING SYSTEM APPROACH

CAPTCHAs are used because of the fact that it is difficult for the computers to extract the text from such a distorted image, whereas it is relatively easy for a human to understand the text hidden behind the distortions. Therefore, the correct response to a CAPTCHA challenge is assumed to come from a human and the user is permitted into the website. Text Captcha, as the most widely used Captcha scheme, has played an important role in distinguishing humans from computers for a long time. For example, a free e-mail service might find itself bombarded by account requests from an automated program. That automated program could be part of a larger attempt to send out spam mail to millions of people. The CAPTCHA test helps identify which users are real human beings and which ones are computer programs. Spammers are constantly trying to build algorithms that read the distorted text correctly. So strong CAPTCHAs have to be designed and built so that the efforts of the spammers are thwarted. First, OCR systems constantly improve and have reached a level that demands very strong distortions. These, in turn, affect the usability of course and make it harder for humans to solve the challenge. Another aspect is the increasing number of small mobile devices that are capable of using standard web services. Often these devices do not have a hardware-based keyboard and the user is forced to use an alternative—possibly cumbersome—input method to solve a text-based CAPTCHA.

# International Journal of Innovative Research in Science, Engineering and Technology

(A High Impact Factor, Monthly, Peer Reviewed Journal)

Visit: [www.ijirset.com](http://www.ijirset.com)

Vol. 8, Issue 5, May 2019

## Disadvantages:

- Sometimes very difficult to read.
- Are not compatible with users with disabilities.
- Time-consuming to decipher.
- Technical difficulties with certain internet browsers.
- May greatly enhance Artificial Intelligence.

## Advantages:

- SACaptcha are easy for humans to solve but remain difficult for computers.
- SACaptcha are easy to generate and evaluate.
- Improves the security of Captchas by utilizing deep learning techniques.

## IV. PROPOSED SYSTEM APPROACH

Previous image-based Captchas have describes various issues: some schemes require humans to manually select source images or add labels to images; some are based on a database, and if the database is compromised, they become vulnerable; some schemes incur a high transmission cost; and, most importantly, almost all of them have been proven to be unsecure. To overcome these issues, proposes a novel image-based Captcha named Style Area Captcha (SACaptcha), which is based on semantic information understanding, pixel-level segmentation and deep learning techniques.

The proposed system describes in given fig.1. In this work, select single input content image. After create the number of foreground style-transferred regions in each Captcha image to 4 to 7 the style transfer images. The shape of each region is randomly selected: it can be a rectangle, a triangle, a circle or other irregular shapes such as a heart, a leaf, a moon and so on. One of these style-transferred images is synthesized with the original image. Randomly crop regions with different shapes from other style-transferred images and relocate them in the synthetic background to generate a Captcha. After, generate a brief description to guiding users on how to pass the test. The output is the generated SACaptcha.

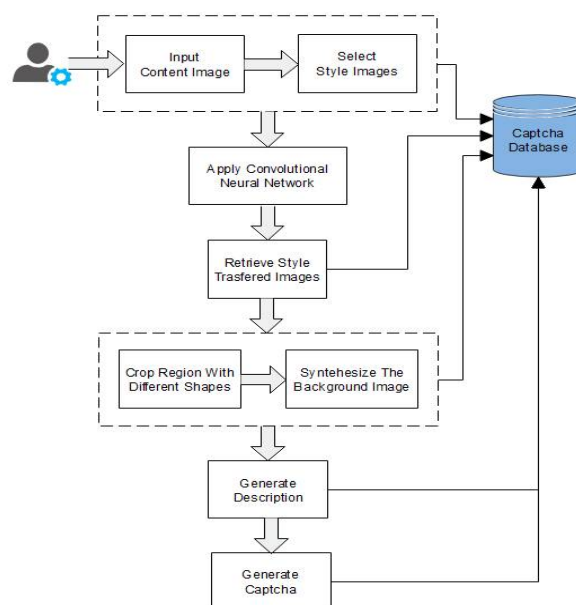


Fig.1 Block Diagram of Proposed System

# International Journal of Innovative Research in Science, Engineering and Technology

*(A High Impact Factor, Monthly, Peer Reviewed Journal)*

Visit: [www.ijirset.com](http://www.ijirset.com)

Vol. 8, Issue 5, May 2019

## ACKNOWLEDGMENT

This work is supported in a logistic management system of any state in india. Authors are thankful to Faculty of Engineering and Technology (FET), SavitribaiPhule Pune University,Pune for providing the facility to carry out the research work.

## V. CONCLUSION

The proposed a novel image-based Captcha named SACaptcha using neural style transfer techniques. Most early image-based Captchas are based on the problem of image classification, whereas SACaptcha relies on problems of semantic information understanding and pixel-level segmentation. This is a positive attempt to improve the security of Captchas by utilizing deep learning techniques. The future work will promote more-effective ways to enhance the security of text Captchas.

## REFERENCES

- [1] H. Gao, W. Wang, J. Qi, X. Wang, X. Liu, and J. Yan, "The robustness of hollow captchas," in Proceedings of the 2013 ACM SIGSAC conference on Computer & communications security. ACM, 2013, pp. 1075–1086.
- [2] H. Gao, M. Tang, Y. Liu, P. Zhang, and X. Liu, "Research on the security of microsoft's two-layer captcha," IEEE Transactions on Information Forensics and Security, vol. 12, no. 7, pp. 1671–1685, 2017.
- [3] E. Bursztein, J. Aigrain, A. Moscicki, and J. C. Mitchell, "The end is nigh: Generic solving of text-based captchas," in WOOT, 2014.
- [4] D. C. Ciresan, U. Meier, J. Masci, L. Maria Gambardella, and J. Schmidhuber, "Flexible, high performance convolutional neural networks for image classification," in IJCAI Proceedings-International Joint Conference on Artificial Intelligence, vol. 22, no. 1. Barcelona, Spain, 2011, p. 1237.
- [5] O. Starostenko, C. Cruz-Perez, F. Uceda-Ponga, and V. Alarcon-Aquino, "Breaking text-based captchas with variable word and character orientation," Pattern Recognition, vol. 48, no. 4, pp. 1101–1112, 2015.