

Intelligent Solar Panel Based Automatic Plant Irrigation System for Agriculture

Dr.K.A.Dattatreya¹, L.Pradeep², L.Gunashekar³, V.Vikram⁴

Assistant Professor, Department of ECE, Adhiyamaan College of Engineering, Hosur, Tamilnadu, India¹

U.G Student, Department of ECE, Adhiyamaan College of Engineering, Hosur, Tamilnadu, India^{2,3,4}

ABSTRACT: In the field of agribusiness, utilization of legitimate technique for water system is critical in light of the fact that the principle reason is the absence of downpours and shortage of land supply water. The persistent extraction of water from earth is lessening the water level because of which part of land is coming gradually during the zones of un-inundated land. Persistent extraction of water from earth is diminishing the water level because of which parcel of land is coming gradually during the zones of un-flooded land.

KEYWORDS: LDR detector, LCD display, GSM modem.

I. INTRODUCTION

Another critical reason of this is because of spontaneous utilization of water because of which a lot of water goes squander. For this reason; we utilize this programmed plant water system framework. The framework gets control from sunlight based vitality through photovoltaic cells. Subsequently, reliance on flighty business control isn't required. In this undertaking we utilize sun powered vitality which is utilized to work the water system siphon. The circuit involves sensor parts assembled utilizing operation amp IC. Operation amps are arranged here as a comparator. Two firm copper wires are embedded in the dirt to detect whether the dirt is wet or dry. A microcontroller is utilized to control the entire framework by observing the sensors and when sensors sense dry state of soil, at that point the microcontroller will send direction to transfer driver IC the contacts of which are utilized to switch on the engine and it will turn off the engine when the dirt is in wet condition. The microcontroller does the above activity as it gets the flag from the sensors through the yield of the comparator, and these signs work under the control of programming which is put away in ROM of the microcontroller. The state of the siphon i.e., ON/OFF is shown on a 16X2 LCD which is interfaced to the microcontroller. Further the undertaking can be improved by interfacing it with a GSM modem to pick up authority over the exchanging task of the engine. In the field of agribusiness, utilization of legitimate strategy for water system is critical on the grounds that the principle reason is the absence of downpours and shortage of land store water. The persistent extraction of water from earth. The framework comprises of daylight Dependent Resistor (LDR) locator, DC engine and remote framework. Microcontroller is that the primary component for predominant the framework. The framework can follow the position of the sun to ensure the sun oriented exhibit is regularly opposite with the sun hence advancing force yield. The activity of the framework on radiant and climate condition has been given amid this paper. The charge controller is utilized to shield the battery by giving all insurances other than charging. In water system process, the dirt perception is that the most vital parameter, along these lines we've to watch the dirt condition by the sensors, regardless of whether the dirt is dry a hand-off with the sun based power, and on the off chance that it's dry, at that point it turns off the engine precisely. The on/off state of the siphon is appeared on partner LCD show.

II. RELATEDWORK

The primary technique in existing water system save the wastage of water and to adequately deal with the quantity of watering of the plants. It moreover goes for diminishing human work, exertion and blunders on

Organized by

Department of ECE, Adhiyamaan College of Engineering, Hosur, Tamilnadu, India

account of human carelessness. Class Rana Biswas et.al utilizes wetness sensors to detect the measure of wetness inside the dirt. At the point when the dampness substance of the dirt goes underneath a distinct utmost for a plant/crop, the siphon framework is activated and along these lines the plant/crop is designed. The plants zone unit watered with productivity until the predetermined worth is come to and in this manner the siphon is changed consequently. Including to those have built up a preparation all together that the sunlight based boards will follow the introduction of the light and change themselves appropriately. The unmistakable component of the arranged framework is that as opposed to accepting the world as its reference, it accepts the sun as a managing supply Active sensors unendingly screen the light and turn the board towards the course wherever the force is most. The daylight subordinate resistors carry out the responsibility of detecting the change inside the situation of the sun. sun powered vitality is absolutely incredible to be utilized with water system frameworks for patio nurseries lofts, nurseries and so forth the best time to water plants in summer all together that the water fuses a likelihood to splash into the ground.

In paper the style of low value programmed Irrigation System utilizing a Wireless Sensor Network and GPRS Module is spoken to. The point is to supply implanted based generally framework for water system to downsize the manual perception of the field and discover the information inside the style of GPRS. By abuse remote systems it suggest the power board in regards to these mal rehearses. Water system framework utilizes valves to demonstrate water system ON and OFF. These valves be just programmed by abuse controllers.

Basil M. Hamed et.al depicts the yield control made by high-focus sunlight based warm and electrical marvel frameworks is straightforwardly connected with the quantity of elective vitality non heritable by the System, and it's along these lines important to follow the sun's situation with a high level of precision

In paper utilizes 8051 microcontroller. The tactile part is developed abuse an operation amp going about as a comparator associated with the microcontroller for detecting the dampness state of the dirt. The charge controller is utilized to shield the battery by giving all securities other than charging. In water system process, the dirt perception is that the most essential parameter, subsequently we've to watch the dirt condition by the sensors, regardless of whether the dirt is dry or If it's dry, at that point the microcontroller sends the directions according to the program to change the engine utilizing a hand-off with the sun oriented power, and in the event that it's dry, at that point it turns off the engine precisely. The on/off state of the siphon is appeared on partner LCD show.

The framework comprises of daylight Dependent Resistor (LDR) identifier, DC engine and remote framework. Microcontroller is that the primary component for overwhelming the framework. The framework can follow the arrangement of the sun to ensure the sun based exhibit is regularly opposite with the sun in this way improving force yield. The activity of the framework on bright and climate condition has been given amid this paper.

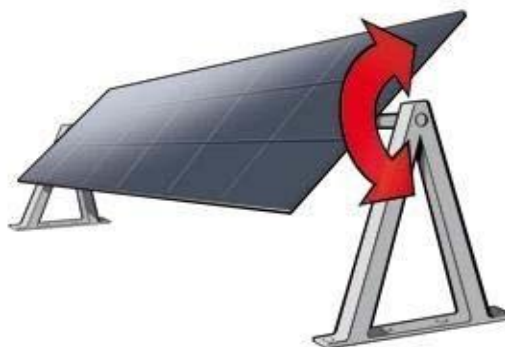


Figure 2.1 Sunshine Dependent Resistor (LDR) Detector

Organized by

Department of ECE, Adhiyamaan College of Engineering, Hosur, Tamilnadu, India

III. PROPOSED SYSTEM

In our proposed framework, we utilize two modes, one is auto mode and Manual mode. In an Auto Mode, water system will be controlled utilizing sensors that are put in various zone of the field. In manual mode we can control ON water siphon utilizing manual switch. We are utilizing programmed entryway valve to control water stream to which bearing to move according to the sensor flag. Battery is charged by means of sun based and battery voltage is observed, if battery voltage goes low controller won't enable siphon to turn ON. so we can shield battery from channel.



Figure 3.2 Proposed System

IV. SYSTEM BLOCK DIAGRAM

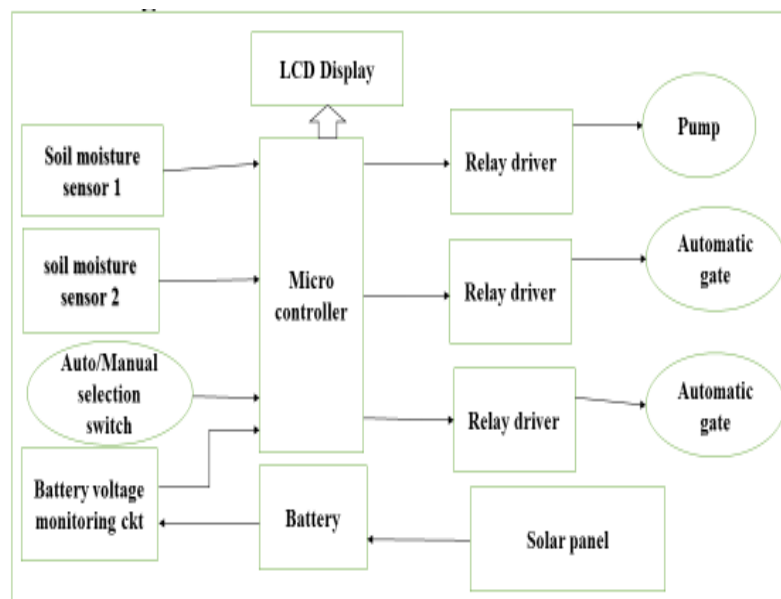
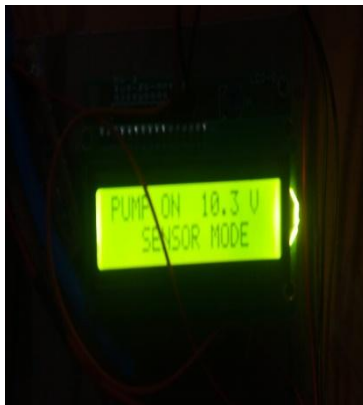


Figure 4.4 Block Diagram

V. EXPERIMENTAL RESULTS



a)



b)

VI. CONCLUSION

The whole framework can go about as a yield protection framework, since it can guard the harvests by protecting it from less than ideal downpour, hail stones, and temperature, subsequently serving to the ranchers to ask ideal development. Likewise, it will encourage to make right utilization of water, in light of the fact that the dirt wet dimension contrasts from harvests to yields and this might be dealt with by the dirt wet detecting component. since the whole framework will be powerful by sunlight based power which can be hang on inside the reversible batteries, one needn't consider the power utilization, as lifetime of sun powered cluster that is available at present is a quarter century. In addition, the total framework is been observed by GSM display, agriculturist can constantly be alarmed what moves is been made by the microcontroller. A microcontroller is utilized to control the entire framework by observing the sensors and when sensors sense dry state of soil, at that point the microcontroller will send direction to hand-off driver IC the contacts of which are utilized to switch on the engine and it will turn off the engine when the dirt is in wet condition.

REFERENCES

- [1] 978-1-5090-6480-9/17/\$31.00©2017 IEEE Devika CM -“Automatic Plant Irrigation System using Arduino” Proceedings of 2017 IEEE International Conference on Circuits and Systems (ICCS2017)
- [2] Ateeq Ur Rehman, Rao Muhammad Asif, “GSM BASED SOLAR AUTOMATIC IRRIGATION SYSTEM USING MOISTURE, TEMPERATURE AND HUMIDITY SENSORS” 2017 International Conference on Engineering Technology and Technopreneurship (ICE2T).
- [3] 978-1-5090-4257-9/17/\$31.00 ©2017 IEEE International Conference on Trends in Electronics and Informatics ICEI 2017 K. Krishna Kishore Asst Professor Dept of ECE ,K. Krishna Kishore, M. H. Sai Kumar
- [4] 978-1-5386-1887-5/17/\$31.00 ©2017 IEEE “Solar Powered Auto Watering System for Irrigation using Embedded Controller” International Conference on Energy, Communication, Data Analytics and Soft Computing (ICECDS-2017)
- [5].F. S. Zazueta, J. Xin, "Soil Moisture Sensors" in Bulletin 292, Gainesville, FL, USA: University of Florida, 2004.
- [6]. C. C. Shock, J. M. Bamum, M. Seddigh, “Calibration of Watermark Soil Moisture Sensors for Irrigation Management”, Proceedings of the 1998 Irrigation Association Technical Conference, pp. 123-129, 1998.
- [7].https://www.hackster.io/ryanjgill2/plantmonitoringsystem88ed2b?ref=search&ref_id=plant%20monitoring&offset=0
- [8]. A. Matese, S. F. DI Gennaro, A. Zaldei, L. Genesio, F. P. Vaccari, "A wireless sensor network for precision viticulture: The NAV system", Computers and Electronics in Agriculture, vol. 69, no. 1, pp. 51-58,2009.