



e-ISSN: 2319-8753 | p-ISSN: 2347-6710

# IJIRSET

International Journal of Innovative Research in  
**SCIENCE | ENGINEERING | TECHNOLOGY**



## INTERNATIONAL JOURNAL OF INNOVATIVE RESEARCH

IN SCIENCE | ENGINEERING | TECHNOLOGY

Volume 10, Special Issue 2, December 2021

**ISSN** INTERNATIONAL  
STANDARD  
SERIAL  
NUMBER  
INDIA

**Impact Factor: 7.569**

# Importance of Search Engine Product in the Cloud Environment

A.Sonya<sup>1</sup>, S.Jaya Priya<sup>2</sup>, M.Rabiya Junith Basha<sup>3</sup>, N. Asiya Sana<sup>4</sup>

Assistant Professor, Department of Information Technology, B.S.Abdur Rahman Crescent Institute of Science and Technology, Vandalur, Chennai, Tamilnadu, India<sup>1</sup>

UG Scholar, Department of Information Technology, B.S.Abdur Rahman Crescent Institute of Science and Technology, Vandalur, Chennai, Tamilnadu, India<sup>2,3,4</sup>

**ABSTRACT** A search engine is a piece of software that allows you to conduct web searches. They conduct a systematic search of the World Wide Online for specific information provided in a textual web search query. The search results are usually shown in a line, which is referred to as a search engine results page (SERPs). The content could include a mix of web page links, photographs, videos, and infographics. Some search engines also mine data available in databases. All are giving arrangements as rundown of URLs, text, pictures, recordings, and so on. Be that as it may, nobody is giving office of information warehousing and information mining with execution of SaaS for dynamic. There is a need of new model with easy-to-understand interface for industry individuals. The new model will permit client to get space explicit and dynamic data dependent on past exchanges put away. Planning new model fuses enhancing business methodologies for future endurance of business. There is likewise need to computerize information warehousing, by permitting associations to save their operational data set with proposed model for constant updates. Some web search tools likewise information mining accessible in data sets or open indexes. Dissimilar to web registries, which are kept up exclusively by human editors, web indexes additionally keep up constant data by running a calculation on a web crawler. The crawler crosses a report assortment, deconstructs archive text, and doles out proxies for capacity in the web search tool file.

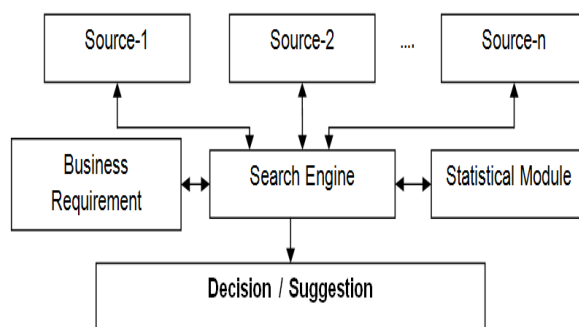
**KEY WORDS** Web Index, Cloud Computing, Data Mining, Forecasting, Demand Pattern Analysis.

## I. INTRODUCTION

Web index offers better help to the client to look through data from the WWW (World Wide Web). Also, it is notable that outcomes are introduced in a rundown. That rundown can contain data identified with pages, pictures or other sort of data related records, and so forth. Site design improvement alludes to improving outcomes given by Web Search Engine. In Web Search Engine it gives results list, rather than that here the proposed Product based Search Engine will give some particular end/choice for information identified with request example of various kinds results of various associations or organizations. The new model will permit client from industry to get area explicit data dependent on their information transfers. This proposed model is for breaking down information of online just as disconnected deals [1]. In present time many looking through procedure are utilized in web or WWW. Web Search motors search to everything in World Wide Web like a document, tunes, recordings, pictures, sites, and climate data through different interfaces. Currently, a great deal of web search tool utilized distinctive web index are utilized an alternate language, methods, looking through calculation, web administrations and interface. Means limit and access the board is characterizing to NISO is any web index and dispense internet searcher. Regularly two sorts of web crawlers are utilized they are a web search tool and Meta internet searcher and Meta web search tools [2]. One of the utilizations of a cloud is online capacity. A few clouds based online stockpiling administrations, like Drop Box, Sugar Sync and Zumo Drive, have effectively been created. An element of these online stockpiling frameworks is that they can store and oversee huge measures of information. In such frameworks, a full book search is needed to oversee records effectively. We plan to foster a full content web search tool for an IaaS based cloud. In this paper, we propose an appropriated web search tool to look for records put away in an IaaS based cloud. In this framework, records are put away in a capacity worker in the cloud [3]. A dispersed web crawler is coordinated as numerous little web indexes that function as an incorporated huge internet searcher through participation. Cloud processing has acquired significant progressions and developments the ICT administrations industry. In a brief timeframe, the term distributed computing

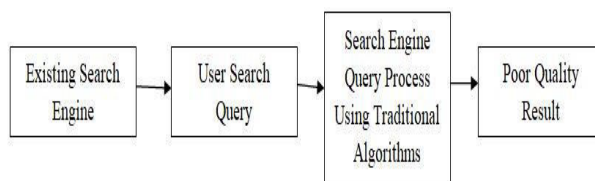
has characterized a recent fad of figuring in which assets are effectively virtualized, offering versatile types of assistance that can be gotten to over the organization. Regardless, notwithstanding the assortment of useful information sources gathered on mists, productively running any application administration in "The Cloud" requires understanding into the on-going framework cycles and work processes. The choice on a cloud climate, public or private, comprises a significant choice for a CIO to moderate danger and look after control. Framework information, for example, foundation logs, data set reviews, security checks, and so forth—is advancing as a resource in itself which offers the guarantee of giving important knowledge to organizations [4]. The web search tool is a framework dependent on specific systems that utilizations explicit PC projects to gather intonation from Internet and arranges the data to give recovery administrations to clients. With the fast improvement of the Internet, the web crawler turns out to be increasingly more significant for Internet clients to recover helpful intonation. To improve the speed and the exactness of the web index, numerous streamlining strategies are advanced by the analysts, like keen specialist innovation, normal language handling innovation, semantic hunt thus on. With the gigantic information since it can't accomplish effective equal activity [5].

### BASE MODEL OF SEARCH ENGINE



Web index takes contribution from various sources where various sources are past exchange records of various organizations. Likewise takes contribution from industry executive in regards to business necessities and their assumptions dependent on performed exchanges. Model likewise utilizes factual techniques to take choices for soundness of industry.

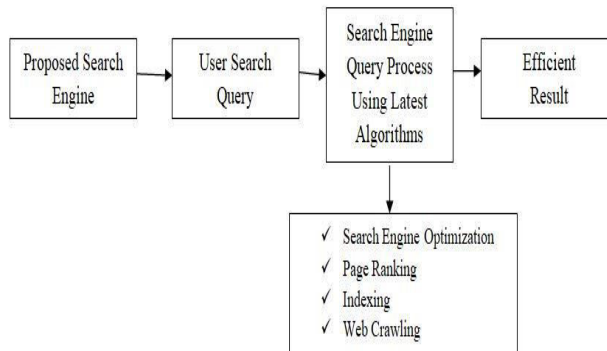
### II. EXISTING SYSTEM



The conventional Search Engine had the option to create the outcomes for the client's prerequisites. Yet, the topic of effective outcome is the greatest test for any web crawler project. Not many occasions just client's content with the indexed lists given via web crawlers. More often than not web search tool neglected to create the necessary query item mentioned by the client.

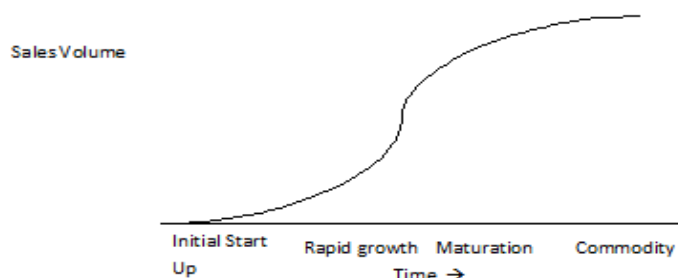
### III. PROPOSED SYSTEM

The proposed framework utilizes the most recent calculations, for example, website streamlining method, page positioning, ordering and web slithering. This will give the best indexed lists to the clients. The extraordinary and unmistakable output is shown by the proposed internet searcher to the client's question.



## ITEM LIFE CYCLE AND RELATED FORECASTING

The item life cycle is consistently reliant upon its interest design. It generally begins with startup stage. Item life cycle stages are as given underneath need to cover for legitimate dynamic while investigating periodical records. Also, that incorporates idea of anticipating.



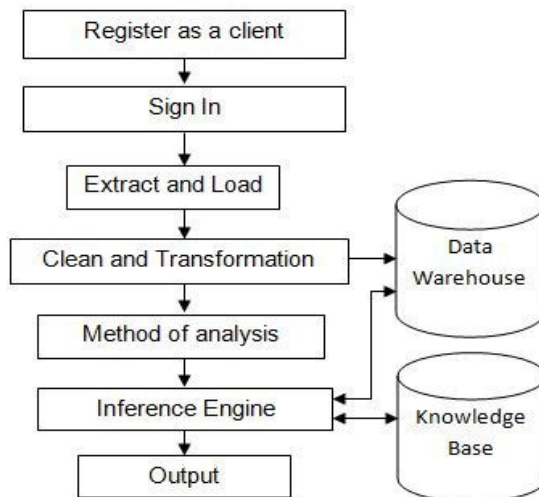
- Start Up [Job Shop Technology]
- Rapid Growth [Batch Technology]
- Maturation [Assembly Line Technology]
- Commodity [Continuous Technology]

The startup stage is beginning stage for any new item and time of that stage is short that is way out of different interaction advancements Job Shop innovation is most reasonable since, supposing that item is new there is no previous exchange history and related interest design. Along these lines, to limit working expense of organization it makes plan of assets to make new item in low volume. At passage level industry needs to perform bunch of trials. After beginning brief period, it needs to break down execution. Appropriately next guide can be ready. Similarly toward the start of each excess stage needs to make game plan assets as required dependent on request design utilizing important interaction innovation as demonstrated in figure 1 and toward the finish of each leftover stage it needs to investigations records of exchanges performed for a fixed time frame.



## WORK FLOW OF SERACH ENGINE:

The work process of the proposed model is as appeared,

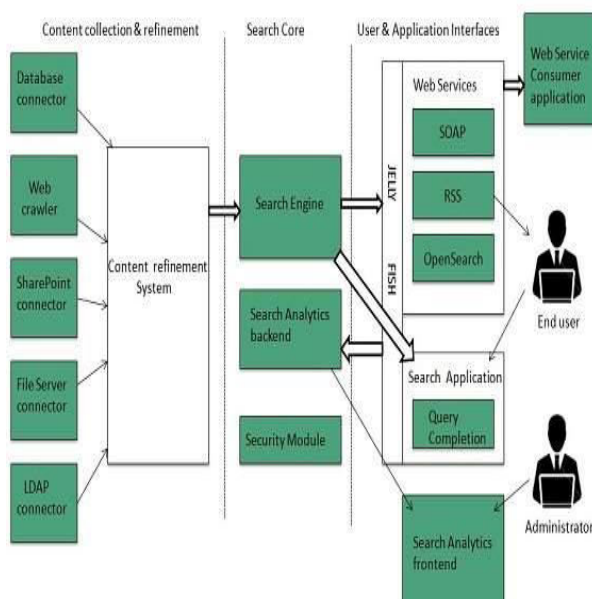


Work process for proposed model where industry or organization can enlist as a customer and can transfer their previous exchange records for information mining reason and scope quantification which additionally joins determination of specific cycle innovation to limit working expense. Model additionally utilizes idea of Knowledge Based System (KBS) having two significant parts (Inference Engine – Software program – with questions and Knowledge Base – with dynamic information).

## ARCHITECTURE

The web index engineering includes the three fundamental layers recorded underneath:

- Content assortment and refinement.
- Search center
- User and application interfaces



Web crawler, data set and the pursuit interface are the significant part of an internet searcher that really makes web index to work. Web search tools utilize Boolean articulation AND, OR, NOT to confine and augment the aftereffects of an inquiry. Following are the means that are performed by the web index:

- The internet searcher searches for the watchword in the record for predefined data set as opposed to going straightforwardly to the web to look for the catchphrase.
- It at that point utilizes programming to look for the data in the information base. This product segment is known as web crawler.
- Once web crawler discovers the pages, the web index at that point shows the significant site pages accordingly. These recovered pages for the most part incorporate title of page, size of text partition, initial a few sentences and so on.

These pursuit standards may change from one web crawler to the next. The recovered data is positioned by different factors like recurrence of watchwords, significance of data, joins and so forth User can tap on any of the indexed lists to open it.

## MODULES

Web crawler is the mainstream term for a data recovery (IR) framework. While scientists and designers take a more extensive perspective on IR frameworks, customers consider them more as far as what they need the frameworks to do — to be specific pursuit the Web, or an intranet, or an information base. All things considered purchasers would truly favor a discovering motor, instead of a web index. Web crawlers match inquiries against a file that they make. The list comprises of the words in each report, in addition to pointers to their areas inside the records.

**Stages 1-3: Preprocessing.** While fundamental and conceivably significant in influencing the result of a pursuit, these initial three stages basically normalize the numerous configurations experienced when getting records from different suppliers or taking care of different Web locales. The means serve to blend all the information into a solitary reliable information structure that every one of the downstream cycles can deal with. The requirement for a very much framed, steady configuration is of relative significance in direct extent to the refinement of later strides of record preparing. Stage two is significant in light of the fact that the pointers put away in the reversed record will empower a framework to recover different estimated units — either site, page, report, area, section, or sentence.

**Step 4: Identify components to index.** Identifying expected indexable components in reports significantly influences the nature and nature of the record portrayal that the motor will look against. In planning the framework, we should characterize "term." Is it the alpha-numeric characters between clear spaces or accentuation? Assuming this is the case, what might be said about non-compositional expressions (phrases in which the different words don't pass on the importance of the expression, similar to "skunk works" or "wiener"), multi-word appropriate names, or between word images, for example, hyphens or punctuations that can mean the contrast between "private venture men" versus independent company men." Each internet searcher relies upon a bunch of decides that its record processor should execute to figure out what move is to be made by the "tokenizer," for example the product used to characterize a term reasonable for ordering.

**Step 5: Deleting stop words.** This progression helps save framework assets by dispensing with from additional preparing, just as potential coordinating, those terms that have little worth in discovering valuable reports because of a client's question. This progression used to issue considerably more than it does now when memory has gotten such a ton less expensive and frameworks such a ton quicker, yet since stop words may contain up to 40 percent of text words in an archive, it actually has some importance. A stop word list normally comprises of those word classes known to pass on minimal considerable significance, like articles (a, the), conjunctions (and, yet), additions (goodness, yet), relational words (in, finished), pronouns (he, it), and types of the "to be" action word (is, are). To erase stop words, a calculation thinks about file term applicants in the archives against a stop word list and kills certain terms from consideration in the list for looking.

**Stage 6: Term Stemming.** Stemming eliminates word postfixes, maybe recursively in many a layer of handling. The cycle has two objectives. As far as proficiency, stemming decreases the quantity of novel words in the file, which thus

diminishes the extra room needed for the record and paces up the pursuit interaction. As far as viability, stemming improves review by decreasing all types of the word to a base or stemmed structure. For instance, if a client asks for analyze, they may likewise need records which contain analysis, analyzing, analyzer, analyzes, and analyzed. Hence, the record processor stems archive terms to analyze so that reports which incorporate different structures of analyze will have equivalent probability of being recovered; this would not happen if the motor just listed variation frames independently and required the client to enter all. Obviously, stemming has a disadvantage. It might contrarily influence accuracy in that all types of a stem will coordinate, when, truth be told, an effective question for the client would have come from coordinating with just the word structure really utilized in the inquiry.

**Step 7:** Extract file sections. Having finished stages 1 through 6, the report processor removes the leftover passages from the first record. For instance, the accompanying passage shows the full content shipped off a web index for handling:

Milosevic's remarks, conveyed by the authority news organization Tanjug, cast question over the legislatures at the discussions, which the worldwide local area has called to attempt to forestall a hard and fast conflict in the Serbian region. "President Milosevic said it was notable that Serbia and Yugoslavia were solidly dedicated to settling issues in Kosovo, which is a fundamental piece of Serbia, calmly in Serbia with the interest of the delegates of every single ethnic local area," Tanjug said. Milosevic was talking during a gathering with British Foreign Secretary Robin Cook, who conveyed a final offer to go to exchanges in seven days' experience on a self-governance proposition for Kosovo with ethnic Albanian pioneers from the area. Cook prior told a meeting that Milosevic had consented to contemplate the proposition.

**Stage 8:** Term weight assignment. Weights are doled out to terms in the file document. The most straightforward of web crawlers simply dole out a parallel weight: 1 for presence and 0 for nonattendance. The more modern the web index, the more intricate the weighting plan. Estimating the recurrence of event of a term in the archive makes more modern weighting, with length-standardization of frequencies even more refined. Broad involvement with data recovery research over numerous years has plainly exhibited that the ideal weighting comes from utilization of "tf/idf." This calculation estimates the recurrence of event of each term inside a record. At that point it looks at that recurrence against the recurrence of event in the whole information base.

Not all terms are acceptable "discriminators" — that is, everything terms don't single out one record from another well indeed. A straightforward model would be "the." This word shows up in such a large number of reports to help recognize one from another. A more subtle model would be "anti-microbial." In a games data set when we contrast each record with the information base all in all, the expression "anti-toxin" would likely be a decent discriminator among archives, and in this manner would be allotted a high weight. Then again, in an information base committed to wellbeing or medication, "anti-infection" would presumably be a helpless discriminator, since it happens frequently. The TF/IDF weighting plan appoints higher loads to those terms that truly recognize one archive from the others.

**Stage 9:** Create index. The file or reversed document is the inner information structure that stores the record data and that will be looked for each question. Altered records range from a straightforward posting of each alpha-numeric arrangement in a bunch of reports/pages being ordered alongside the generally recognizing quantities of the archives in which the grouping happens, to an all the more phonetically complex rundown of passages, the tf/idf loads, and pointers to where inside each report the term happens. The more complete the data in the record, the better the query items.

#### IV. CONCLUSION

As a result, cloud providers will have apps and make them available to end users via the internet. In this approach, an independent software vendor (ISV) may contract with a third-party cloud provider to host the application, and programming as a service is a product authorization and delivery model in which programming is authorized on a membership basis and is half-facilitated. In certain circumstances, it is alluded to. Finally, the clarification spreads out the scope of preparing that may happen in a web crawler, alongside the numerous choices that a web index supplier settles on. The scope of alternatives may help explain clients' regular amazement at the outcomes their inquiries return. Up till now, web crawler suppliers have fundamentally selected less, versus more, complex handling of records and questions. The normal indexed lists accordingly leave a ton of work to be finished by the searcher, who should wend their way through the outcomes, tapping on and investigating various archives prior to finding precisely what they look for. The normal development of items and administrations proposes that this business as usual won't proceed.



## REFERENCES

- [1] .B.T. Sampath kumar and S.M.Pavithra “Evaluating the searching capabilities of search engine and metasearch engine:a comparative study” annals of library and information studies vol.57, june 2010, pp-87-97.
- [2] Biradar B S, and Sampath Kumar B T, “Internet search engines:a comparative study and evaluation methodology”, SRELS Journal of Information Management, volume 43(3),2006 pp-231-241
- [3] K.Srinivas, P.V.S.Srinivas and A.Govardhan. “A Survey on the “Performance Evaluation of Various Meta Search Engines” IJCSI Volume 8, Issue 3, No. 2, May 2011 Pages 359-364.
- [4] .Felipe Bravo-Marquez, Gaston L’Huillier, Sebastián A. Ríos, Juan D. Velásquez, “A Text Similarity Meta-Search Engine Based on Document Fingerprints and Search Results Records” 2011 IEEE/WIC/ACM International Conferences on Web Intelligence and Intelligent Agent Technology, pp-146-153
- [5] K.Srinivas, P.V.S. Srinivas, A.Govardhan,” Web Service Architecture for a Meta Search Engine”, (IJACSA) International Journal of Advanced Computer Science and Applications, Vol. 2, No. 10, 2011,pp-31-36
- [6] .Brender, N. & Markov, L. (2013). Risk perception and risk management in cloud computing: Results from a case study of Swiss companies. International Journal of Information Management. 33(5), 726-733.
- [7].Sundareswaran, S. (2012). Ensuring Distributed Accountability for Data Sharing in the Cloud. IEEE Transactions on Dependable and Secure Computing. 9(4), 556 – 568.
- [8] Subarna Kumar Das,” Role Of Meta Search Engines In Web- Based Information System: Fundamentals And Challenges” 4th Convention Planner -2006, Inflienet Centre, Ahmedabad, Mizoram Univ.,Aizawl, 09-10 November.
- [9] Mark Levene, “An Introduction To search Engines and Web Navigation”, ISBN 978-0-470-52684-2 (Pbk.) Year-2010, Published by John Wiley & Sons, Inc., Hoboken, New Jersey.





**Impact Factor:  
7.569**



# INTERNATIONAL JOURNAL OF INNOVATIVE RESEARCH

IN SCIENCE | ENGINEERING | TECHNOLOGY

 **9940 572 462**  **6381 907 438**  **ijirset@gmail.com**



[www.ijirset.com](http://www.ijirset.com)

Scan to save the contact details