



e-ISSN: 2319-8753 | p-ISSN: 2320-6710

IJRSET

International Journal of Innovative Research in
SCIENCE | ENGINEERING | TECHNOLOGY

INTERNATIONAL JOURNAL OF INNOVATIVE RESEARCH

IN SCIENCE | ENGINEERING | TECHNOLOGY

Volume 10, Issue 7, July 2021

ISSN INTERNATIONAL
STANDARD
SERIAL
NUMBER
INDIA

Impact Factor: 7.569

9940 572 462

6381 907 438

ijirset@gmail.com

www.ijirset.com



SPIHT Based Medical Image Compression: A PSNR Approach

Pakhale Amol R.

PG Student, Dept. of Electrical, KGIET-Darapur, India

Kaushal Atul.N.

Asst. Professor, Dept. of Electrical, KGIET- Darapur, India

Abstract—Images are needed to be compressed in order to reduce the storage space and to minimize the transfer time over a network. Compression plays a more vital role in the field of medical imaging where a huge amount of storage is required to store these images and retrieve later for diagnosis. So in order to save the amount of storage space and network bandwidth a suitable compression scheme needs to be implemented in order to achieve optimum compression levels without any loss of valuable information. In this paper I have reviewed the concept of lossless compression on medical images and presented an introductory research paper.

Keywords— Compression, Lossless Compression, Medical Images.

1. INTRODUCTION

Image compression is of two types: lossless compression (reversible) and lossy compression (irreversible). A lossless compression method involves no data loss and a much lower compression level. In lossy compression, data is discarded during compression and is not recoverable. Lossy compression achieves much greater compression than lossless technique. Wavelet and higher-level JPEG are examples of lossy compression. Compression is an important process in the field of medical imaging technologies and applications that include tele- radiology, tele-consultation, e-health, telemedicine and statistical medical data analysis. For the telemedicine, medical image compression (MIC) and analysis can be useful and play a vital role for the diagnosis of more sophisticated and complicated images through consultation of specialists.

The application of digital imaging in the field of medicine is increasing rapidly therefore hospitals need to store a large amount of data. Medical images are an important part of this. As a result hospitals have a great bulk of images with them and require a huge disk space and transmission bandwidth to store the images. In most cases transmission bandwidth is not enough to store all the image data. Image compression is the process of encoding information in fewer bits than a compressed representation that would use through use of specific encoding schemes. Compression is convenient because it helps to decrease the need of expensive resources, such as hard disk space or transmission bandwidth decompressed. For example, a compression method for image may need a costly

compression schemes therefore involve balancing hardware for the image to be decompressed fast enough to be viewed as its being. The design of data among various problems, including the amount of compression, the amount of distortion introduced (if using a lossy compression scheme), the computational resources required to compress and decompress the data. The use of computers and networks makes it easier to allocate the image data among the staff efficiently. As the health care is computerized, new methods and applications are developed, among them are the MR and CT techniques. MR and CT produce sequence of images (image stacks) each along the cross-section of an object. The amount of data produced by these techniques is enormous and this might be a problem when sending the data over a network. To overcome this problem image compression has been introduced in the field of medical. Different types of biomedical images:-

- i. X-Ray Image
- ii. CT Scan
- iii. MRI Image
- iv. Ultrasound Image
- v. Optical imaging
- vi. Mammography Image

Image compression is reducing the size in bytes of a graphics file without degrading the quality of the image to an unacceptable level. The reduction in file size allows more images to be stored in a given amount of disk or memory space. It also reduces the time needed for images to be sent over the Internet or downloaded from Web sites. There are several different methods using which image files can be compressed. For Internet use, the two most formats are JPEG and the GIF formats. The JPEG method is more popularly used for photographs, while the GIF method is usually used for line art and other image which contain geometric shapes. Other techniques for image compression include the use of fractals and wavelets. These methods have not gained widespread acceptance for use on the Internet as of this writing.

Both of the approaches offer potential because they have higher compression ratios than the JPEG or GIF methods for some types of images. Another new method that may in time replace the GIF format is the PNG format.

II. WAVELET TRANSFORM

A Wavelet implies a "small wave". Wavelets are functions that used in representing data or other functions in mathematical terms. A wavelet is a waveform of a limited interval that has a normal estimation of zero. Wave in itself alludes to a function that is oscillatory. Furthermore Wavelet dissection can perform local analysis i.e. it can analyse a localized area of a larger signal i.e. it can investigate a limited zone of a bigger indicator. The essential steps in wavelet packing will be performing a discrete wavelet Transformation (DWT), quantization of the wavelet-space image sub bands, and then encoding these sub bands. Wavelet pictures by and of themselves will be not compressed pictures; rather it is quantization and encoding stages that do the image compression. Image decompression, or recreation, is accomplished via doing the above steps in inverse and reverse.

Wavelets are created from one single capacity (local function) called the mother wavelet. There will be numerous parts in the wavelet family, that are generally found to be more useful, are as per the Haar wavelet is one of the oldest and easiest wavelet.. The wavelets can be picked in light of their shape and their capability to investigate the sign in a specific application.

- i. Haar- This wavelet is intermittent, and looks like a step function.
- ii. Coiflets- The wavelet capacity has $2n$ moments meet to 0 and the scaling capacity has $2n-1$ moments equivalent to 0. The two capacities have a backing of length $6n-1$.
- iii. Symlets- The symlets are almost symmetrical wavelets. The properties of the two wavelet families are comparable.
- iv. Meyer - The Meyer wavelet and scaling capacity are characterized in the recurrence area.
- v. Biorthogonal- This group of wavelets shows the property of direct stage, which is required for sign and picture reproduction. By utilizing two wavelets, one for disintegration (on the left side) and the other for remaking (On the right side) rather than the same single one, interesting properties are determined.
- vi. Daubechies - Daubechies are minimalistically underpinned orthonormal wavelets and discovered application in DWT. Its family has got nine parts in it.

III. IMAGE COMPRESSION ALGORITHMS

Image compression can be lossy or lossless. Lossless compression is favoured for artificial pictures, for example, specialized drawings, symbols or comics. This is on the grounds when used at low bit rates, lead to compression artefacts. Lossless squeezing strategies are favoured for high value data, for example, medicinal

imaging or picture examines made for archival purposes. Lossy approaches are commonly used for common pictures, for example, photographs in applications where minor (sometimes invisible) loss of acceptable to achieve a substantial decrease in bit rate

Lossy image compression: A lossy compression technique is one where compressing data and then decompressing it retrieves data that may be unlike from the original, but is good enough to be useful in some way [11][13]. Lossy compression is generally used to compress visual and audio especially in applications, for example, streaming media and web telephony. Then again lossless compression is needed for content and information records, for example, bank records, content articles, and so forth. Lossy compression formats undergo generation loss: repeatedly compressing and decompressing the file will make it logically lose quality. This is in contrast with lossless data compression.

Lossless Image Compression: Lossless or reversible compression are compression methods in which the revamped information precisely matches the first . Such compression systems give the assurance that no pixel contrast between the first and the compressed picture is over a certain limit. It finds prospective applications in remote sensing, medicinal and space imaging, and multispectral picture documenting. In these applications the volume of the information could call for lossy compression for useful stockpiling and transmission. Another approach to deal with the lossy-lossless dilemma confronted in applications, for example, therapeutic imaging and remote sensing is to utilize a progressively definable compression strategy that gives a bit stream that prompts a dynamic remaking of an image. Utilizing wavelets, for instance, one can get an implanted bit stream from which different levels of rate and mutilation could be acquired. Numerous procedures have been found for conceivable use in tele-radiology where a specialist commonly asks for areas of a picture at enhanced quality while regions of an image at improved quality while accepting initial versions and insignificant parts at lower quality, and along these lines bringing down the general transfer speed prerequisites. Indeed, the new still picture layering standard, JPEG 2000, gives such peculiarities in its developed structure. The different sorts of image compression systems are depicted below:

Joint Photographic Experts Group (JPEG)

JPEG stands for Joint Photographic Experts Group, the first name of the Committee that composed the standard. JPEG is intended for compacting full-shade or grey scale pictures of common, demonstrable



scenes. It works well on photos, naturalistic craftsmanship, and comparable material; not all that well on lettering, basic comics, or line drawings. JPEG handles just still pictures, however there is a related standard called MPEG for movies. JPEG is "lossy," implying that the decompressed picture isn't exactly the same as the one you began with. JPEG is intended to exploit known restrictions of the human eye, remarkably the way that little shade progressions are seen less exactly than little changes in intensity. In this way, JPEG is proposed for layering pictures that looked at by humans. In the event that you want to machine-investigate your pictures, the little errors presented by JPEG may be an issue for you, regardless of the possibility that they are imperceptible to the eye. A helpful property of JPEG is that the level of information loss might be differed by altering compression parameters. This implies that the picture creator can exchange off record size against yield picture quality. You can make greatly little records if it's all the same to you low quality; this is helpful for applications, for example, indexing image files. On the other hand, on the off chance that you aren't in content with the yield quality at the default compression setting, you can lift the quality until you are satisfied, and acknowledge lesser compression. An alternate vital part of JPEG is that decoders can exchange off translating rate against picture quality, by utilizing quick however wrong rough guesses to the obliged computations. (Encoders can likewise exchange precision for rate, however there's generally less motivation to make such an offering when composing a record).

Set Partitioning in Hierarchical Trees (SPIHT)

In the advancement of Image Compression techniques the recent developed algorithm is SPIHT(set partitioning in hierarchical trees) which uses the subband coding which results into the pyramid structure[7]of an image with the complementary filtering .It is observed that in SPIHT algorithm there exists a spatial relationship between the coefficients at various levels along between the coefficients at various levels along with the frequency sub-bands in the hierarchical structure, the descendants or off-springs at successive locations have spatial similarity to its corresponding offspring[3], this structure in SPIHT is mainly called as spatial orientation of trees. If a given coefficient at location (i,j) is significant in magnitude then some of its descendants will also probably be significant in magnitude. The SPIHT algorithm takes advantage of the spatial similarity present in the wavelet space to optimally find the location of the wavelet coefficient that are significant by means of a binary search algorithm. The SPIHT algorithm transmits

the wavelet coefficients in the progressive way such that the most significant bits are transmitted first, followed by the next bit plane and so on until the lowest bit plane is reached which reduces the MSE(mean square error) of the sent bit. Using this relationship coding in SPIHT is done using the significant test logic which orders the wavelet coefficients. The test is given as:

$$(i,j)^{\max}_{\tau_m} |C_{i,j}| \geq 2^n$$

where $C_{i,j}$ is the wavelet coefficient at the nth bit plane, at location (i,j)of the τ_m subset of pixels, representing a parent node and its descendants. If the result of the significance test is yes an S flag is set to 1 indicating that a particular test is significant. If the answer is no, then the S flag is set to 0, indicating that the particular coefficient is insignificant. This is represented by equation .

$$S_n(\tau) = \begin{cases} 1, & \max_{(i,j) \in \tau} |C_{i,j}| \geq 2^n \\ 0, & \text{otherwise} \end{cases}$$

The sets of hierarchical tree get the following forms[9]:

$O(i, j)$ is the set of coordinates of all offspring of node(i,j)

$D(i, j)$ is the set of all coordinates that are descendants (all nodes that are below) of the node (i,j)

$L(i,j)$ is the set of all coordinates that are descendants but not offspring of node (i,j)

According to the significance of the wavelet coefficients they are arranged in three lists:

- A) LIS: List of insignificant bits.
- B) LIP: List of insignificant bits.
- C) LSP: List of significant Pixels. The

SPIHT flows as below[7]:

A. Initialization: Output n,which can be user defined for maximum efficiency,where LSP is empty,add sorting root co-ordinates to LIP and LIP.

B.Sorting Pass:

B.1-In LIP:Based on entries decide if it is significant then keep the results. if it is significant, move the coordinate to LSP and output sign of the coordinate.

B.2- In LIS: If the entries are insignificant we should stop here.

IF THE ENTRY IN LIS REPRESENTS D(i,j)

- if there will be any more significant pixels further

down the tree and output the decision result if it is significant, decide if all of its four children (O(i,j)) are significant and output decision results

*if significant, add it to LSP, and output sign

*if insignificant, add it to LIP

IF THE ENTRY IN LIS REPRESENTS L(i,j)

(Except childrens consider others)

- decide if there will be any more significant pixels in L(i,j) further down the tree and output the decision result

- if there will be one, add each child to LIS of type D(i,j) and remove it from LIS.

C. Refinement Pass: We have all the values in LSP are $(2^n \leq |C_{i,j}|)$

C.1-For all pixels in LSP, output the nth most significant bit.

D. Quantization:-step Update: decrement n by 1 and do another pass at step B.

IV. EXPERIMENTAL WORK

The basic block diagram of experimental work is shown in Fig.1. We have created the image database in "MATLAB" with the different 5 images. These are the sample images, taken for the initial level and quoted the results in the form of PSNR and Compression ratio.

4.1 Block Diagram Description

Input image and its pre-processing. This block is directly available in the simulation environment which fetches the image from the desired location. In the pre-processing block if the input image is 3-color domain that is RGB image is pre-processed to pass further, it is converted into the intensity image with specified class and double data type for compatibility.[2]

Image Parameters and Frame conversion. In image parameter block, we are extracting the row and column vector parameters of an image and the maximum bits to represent the image used for the further processing. The Frame Conversion block does not make any changes to the input signal other than the sampling mode[8]

DWT of an Image. In the wavelet transform of the image it is decomposed in the pyramidal way with multi decomposition with the no. of significant and insignificant bits, here in our experiment we are using the 9/7 [9] filtering process in which out of every 9

coefficients 7 are significant. We are performing the 6-level decomposition of an image for better results.

SPIHT Encoder. In this block the image parameters in the form of block size, maximum bits and the input from the DWT block that is the wavelet coefficients and the decomposition level are combined to setup the SPIHT encoding describe in the SPIHT algorithm [7]. Initialization of coefficients, sorting and refinement is done based on these input parameters

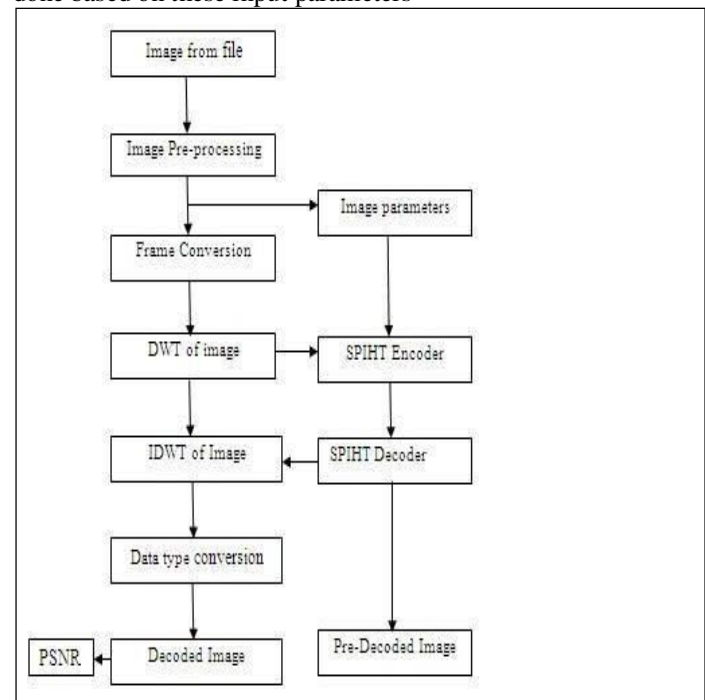


Fig. 1. Experimental Block Diagram

SPIHT Decoder. The encoded image obtained from the encoder block is decoded using the SPIHT decoding algorithm and the decoded wavelet components are generated for further processing.

IDWT of Image. In this block all the decoded wavelet components and the input from DWT are recovered. The IDWT parameters are passed through the data type conversion block to convert the output in double for compatibility.

Output Image. It displays the decoded and pre-decoded Image.

Experimental PSNR Calculation and Display. The quality of the decoded image is judge on the basis of the PSNR (Peak Signal to Noise Ratio)

V. EXPERIMENTAL RESULTS



Fig. 2. Original Image

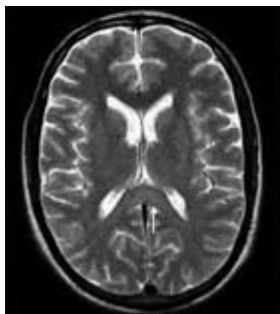
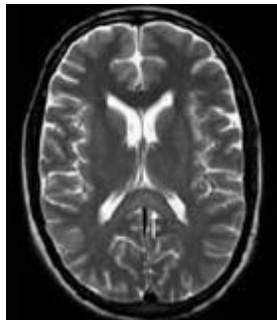


Fig. 3: a. Bior Transform



b. Morlet Transform



c. Haar Transform



d. DB Transform

Table 1. Experimental Analysis of Images

Type of Image	PSNR
Original	38.2
Bior	50.81
Morlet	41.43
Haar	48.25
DB	48.12



VI. CONCLUSION

Experiments has done on medical image, we received good effects of Biorthogonal with SPHT as compare with Haar, Daubechies and ,Morlet wavelet.

REFERENCES

- [1] Yumnam Kirani Singh “ISPIHT-Improved SPIHT “A simplified and efficient subband coding scheme” Center for Development of Advanced Computing Plot: E-2/1, Block GP, Sector V, Salt Lake Electronics Complex.
- [2] H. L. Xu, S. H. Zhong, “Image Compression Algorithm of SPIHT Based on Block-Tree,” Journal of Hunan Institute of Engineering, vol. 19(1), pp.58-61, 2009.
- [3]F.W. Wheeler, and W. A. Pearlman, “SPIHT Image Compression without Lists,” IEEE Int. Conf on Acoustics, Speech and Signal Processing(ICASSP 2000). Istanbul: IEEE, 2000.2047-2050.
- [4] Jianxiong Wang “Study of the Image Compression based on SPIHT Algorithm” college of water resources & hydropower and architecture, yunnan agriculture university Kunming.
- [5] Min HU, Changjiang Zhang , Juan LU, Bo Zhou “A Multi-ROIs Medical Image Compression Algorithm with Edge Feature Preserving” Zhejiang normal university.
- [6] Jia ZhiGang Guo XiaoDong Li LinSheng “A Fast Image Compression Algorithm Based on SPIHT ” College of Electronic and Information Engineering TaiYuan University of Science and Technology TaiYuan, ShanXi, China.
- [7] Chunlei Jiang “A Hybrid Image Compression Algorithm Based on Human Visual System” Electrical and Information Engineering College Northeast Petroleum University Daqing, Heilongjiang Province.
- [8] Stephan Rein , Martin Reisslein,” Performance evaluation of the fractional wavelet filter: A low-memory image wavelet transform for multimedia sensor networks” a Telecommunication Networks Group, Technical University Berlin, Berlin b School of Electrical, Computer, and Energy Eng., Goldwater Center, MC 5706, Arizona State University, Tempe, AZ 85287-5706, United States.
- [9] J. Jytheswar, Sudipta Mahapatra “Efficient FPGA implementation of DWT and modified SPIHT for lossless image compression” Department of Electronics and Electrical Communication Engineering, IIT Kharagpur, Kharagpur 721 302, West Bengal, India.
- [10] Peter Schelkens, Adrian Munteanu, Jan Cornelis



“Wavelet- based compression of medical images:
Protocols to improve resolution and quality scalability
and region-of-interest coding” Department of
Electronics and Information Processing (ETRO),
Vrije Universiteit Brussel, Pleinlaan.

[11] Lalitha Y. S, M.V.Latte “Lossless and Lossy
Compression of DICOMimages With Scalable ROI”
Appa Institute of Engineering &Technology,
Gulbarga, Karnataka, India. JSS Institute &
Academy, Bangalore, India.



**Impact Factor:
7.569**



INTERNATIONAL JOURNAL OF INNOVATIVE RESEARCH

IN SCIENCE | ENGINEERING | TECHNOLOGY

 9940 572 462  6381 907 438  ijirset@gmail.com



www.ijirset.com

Scan to save the contact details