



e-ISSN: 2319-8753 | p-ISSN: 2347-6710

# IJIRSET

International Journal of Innovative Research in  
**SCIENCE | ENGINEERING | TECHNOLOGY**



# INTERNATIONAL JOURNAL OF INNOVATIVE RESEARCH

IN SCIENCE | ENGINEERING | TECHNOLOGY

Volume 10, Issue 7, July 2021

**ISSN** INTERNATIONAL  
STANDARD  
SERIAL  
NUMBER  
INDIA

Impact Factor: 7.569



9940 572 462



6381 907 438



ijirset@gmail.com



www.ijirset.com

# Design and Analysis of Deweeder Using Fusion 360

**Rajnish Kumar Mishra<sup>1</sup>, Girish L<sup>2</sup>, Rishab Rajesh Rao<sup>3</sup>, Ashutosh R Shivanagoudar<sup>4</sup>**

Department of Mechanical Engineering, Alva's Institute of Engineering and Technology, Mijar, Moodbidri,  
Karnataka, India

**ABSTRACT:** The weeder is one of the many farm mechanization in promoting soil tiller and weeder especially considering the reality that the majority of farmers are having small land. It reduces human effort. The implements are mainly self-guided. Working of the assignment is primarily based on engine and equipment mechanism which moves the cutter or blades. It is a extremely good saver of time and charges on field operations. Thus, it will have very nice uses on the farm discipline both for tiling as properly as for weeding. Development of high capability electricity environment friendly versatile machines and mixture machinery for elevated labour productivity, reduced unit price of operation, improved timeliness of operation and suitable for custom hiring.

Weed remover decrease human effort as compared to operation with the aid of bullocks. The bullock implements require the hand and body pressure to achieve depth and alignment of the put into effect in use, whereas in soil tiller and weeder, the implements are generally self-guided. This reduces human drudgery to a magnificent extent. The comparative greater output of operation by using the soil tiller and weeder as compared to bullocks reduces the operational time and achieves timeliness in operation. The renovation of the soil tiller and weeder is easy. It is ideally applicable for mechanizing small farm holdings which account for 80 p.c of the farm holdings of the country. Cost smart the soil tiller and weeder be an obvious preference of smaller farmers, if they are intending to have a mechanical electricity source for farm- operation. Soil tiller and weeder limit the drudgery of accumulating the waste grass between crops in the field in the course of operations as in contrast to operations by way of bullocks. The soil tiller and weeder makes the guide of that wastage grass with the aid of cutting it in small piece and entirely combined with soil for the duration of operation.

**KEYWORDS :** Weeder, Operation, Mixtures, Productivity.

## INTRODUCTION

Weed Remover is one of the many farm mechanizations. Unlike tractors, soil tiller and weeder are non-conventional so some distance as the displacement of labours is concerned. In merchandising soil tiller and weeder especially thinking about the fact that the majority of farmers are having small land. So, they can infrequently afford costlier tractors. therefore, the soil tiller and weeder grow to be a beneficial laptop in the internal cleansing of crops which having small distance between them like Tomato, Brinje, sugarcane, soya bin crops, cultivation of paddy, in particular, and different plants in regular for the smaller farmers. Its major goal is to reduce the manpower as in ultra-modern situation labours are very hard to discover as well as it reduces the working time. As it may want to be a ways higher than the traditional the use of oflabours or bull for tilling purpose. Since the bullocks also motive destruction of crop while taking turns and additionally moving between the field. From the phrase "Weed Remover", one can make out that there is a tiller which is powered. In this case the tiller is powered by an internal combustion engine and so is the identify derived.

The soil tiller and weeder show up to be changing the animal strength greater successfully and assist in growing demand for human labour. The small and marginal farmers form major purchasers for customized hiring of soil tiller and weeder. In distinctly fragmented and small holdings, soil tiller and weeder is desired for laborious farm operations like paddling and preparatory tillage. Soil tiller and weeder is favored by way of small farmers and is being used principally for earning cash earnings via customized hiring. Thus, this laptop offers possibilities for self-employment in rural areas. Even marginal farmers and landless labours effectively and profitably use the soil tiller and weeder for self-employment.

Side effects of herbicides and growing incidence of natural farming set off the want of in addition developments in mechanical weed control. Mechanical weed manipulate is typically related with cultivating tillage (e.g. tertiary tillage), but also foremost and secondary tillage influence weeds. Cultivating tillage is carried out in developing vegetation with harrows, hoes, brushes and a variety of distinctive tools for intra-row weed control. Inter-row cultivations have been used in many a long time in row crops and operate in familiar well.

To expand their potential and accuracy, training structures are vital to steer the hoes along the rows. The success of inter- and intra-row cultivation is rather influenced with the aid of selectivity factors. The control mechanisms of all cultivating tillage strategies are burring in soil, uprooting, and tearing vegetation into pieces. Especially for entire crop and intra-row cultivators, profitable weed manage is fantastically influenced through fabulous adjustment of the intensity (aggressiveness) of cultivation in accordance to the versions of soil resistance, crop and weed resistance to cultivation and the competitive interactions between crop and weeds. Site-specific weed management pursuits to pick out the spatial and temporal variability of weeds and control them correspondingly.

New technologies for sensing crops and weeds in real-time and robotics enable a specific operation of mechanical tools, to enhance efficacy of control and minimize operation costs. Hence in this chapter, implements for mechanical weeding are described collectively with their picks for site-specific weed manage strategies. Harrows and rotary hoes are used for total crop treatment, but it is vital to discover the proper timing and depth to achieve the nice selectivity and yield response. Different implements attached to the equal automobile are combined together trying greater selective weed control, like the in-row cultivator, the rotary harrow, and the precision hoe. Lately, there are prototypes intending automated adjustment of the aggressiveness for the spring-tine harrow and self sufficient education for hoes, for this reason getting nearer to a real-time site-specific weed management approach.

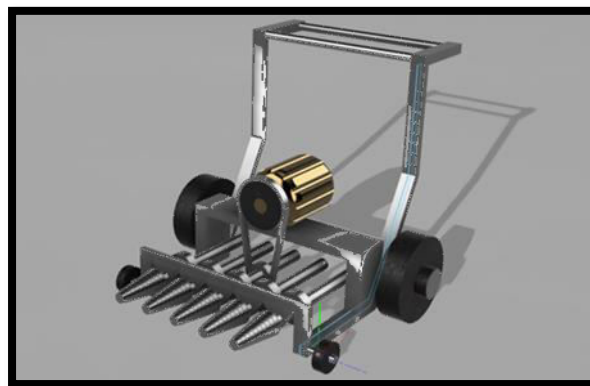


Fig 1 (a). Deweeder Machine Design

## II. WORKING

In our venture of weed remover we're the usage of the engine with petrol (mainly we are using bajaj m80 engine) that is source of electricity to the entire assignment. For beginning we use priming by way of the use of kick. The engine begins but the essential project lies in transmitting strength from engine output to blade axle. For this purpose we use tools assemblies of bevel and bug. The output shaft of the engine is hooked up to the bevel equipment that is intersecting sort of gear that transmits the power in right perspective.

The tools ratio used right here is 1:1 hence the velocity which is to be had from the engine, equal velocity is the output of the bevel assembly. The output bevel tools shaft is made in such a way that different give up of the shaft has got computer virus, this worm is double begin. Considering this shaft is lengthy we use bearings to guide this one. Malicious program gear meeting is capable of getting large discount ratio hence we use this to reap the reduction ratio of 20:1.

Malicious program and trojan horse wheel is stored within the casing with the guide of bearings so that it gets a clean operation, the assembly is properly lubricated and packed so that no foreign cloth can enter interior this meeting. Worm wheel is on the output shaft which has got blade disks welded in this shaft, blades may be fixed in this such provision is provided so that any damaged blade can be changed by simply the nut-bolt association. The rotation of shaft causes disks to rotate which in the end rotate the blades, this output shaft is supported on the casing ends and on the give up (on major body).

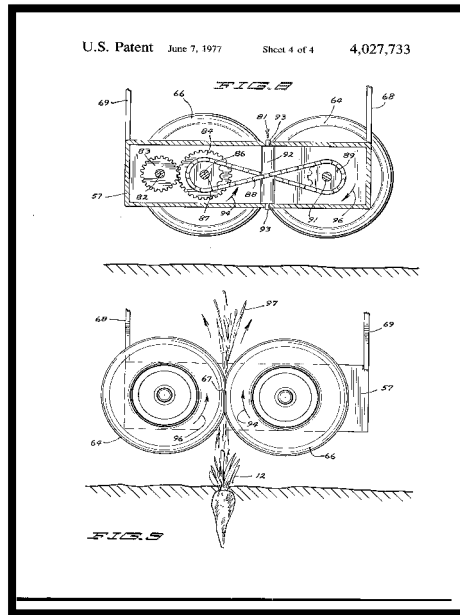
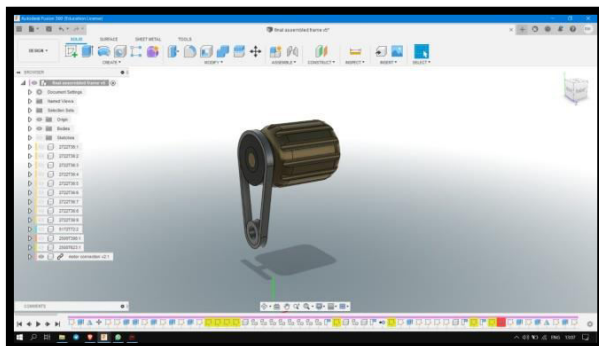


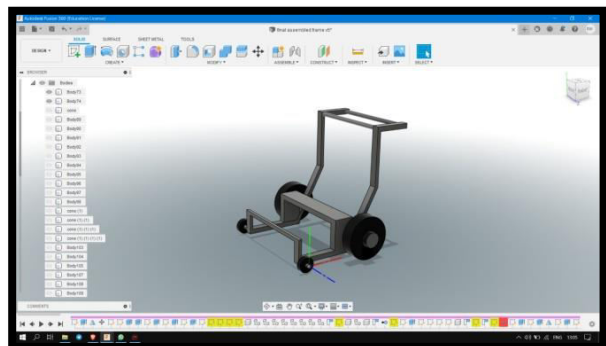
Fig 2 (a) Concept Working

### III. DESIGN

The invention is directed to a computer for pulling weeds from a plurality of rows of crops having each crops and weeds. The computing device has a transverse tool bar mountable on a draft vehicle, as a tractor, with a hitch assembly,. A plurality of weed pulling devices are set up on the device bar. Each weed pulling unit has first and 2nd wheel capability driven about usually longitudinal axes that are positioned in planes prolonged usually parallel to the rows of crops. Each axis is inclined upwardly in a ahead direction. Clamp and preferred shape is used to attach weed pulling unit to the device bar in a manner which allows the gadgets to be vertically adjustable. Each of the wheel means has a surface that is engaged with an adjoining wheel means. A power transmitting capacity mounted on the weed pulling unit drives the first and second wheel capability in opposite instructions whereby weeds between the first and 2nd wheel capacity are pulled from the ground as the computer strikes along the rows of crops. A electricity means is operable to furnish energy to the strength transmission means.



(a)



(b)



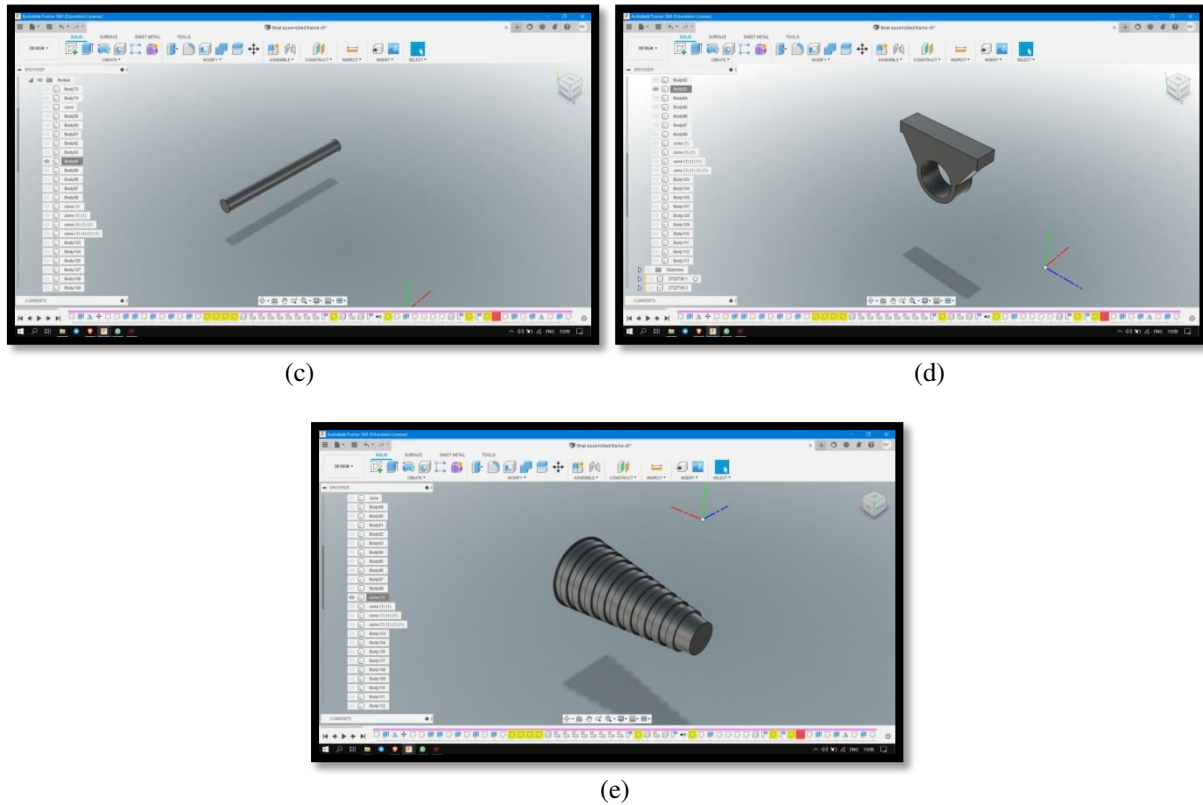


Fig 3. Parts (a) Motor (b)Body (c) Supporting Pipe (d) Bearing Support (e) Roller

#### IV. ANALYSIS

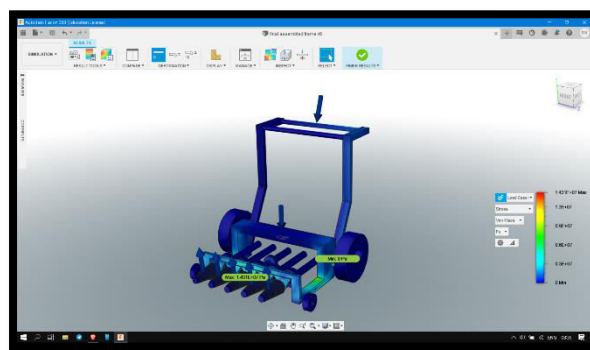


Fig 4 (a) Analysis Result

The results interpretation phase is where the most critical thinking must take place. You compare the results (such as the numbers versus color contours, movements) with what is expected. We determine if the results make sense, and explain the results based on engineering principles.

Average Element Size (% of model size)	
Solids	10
Scale Mesh Size Per Part	No
Average Element Size (absolute value)	-
Element Order	Parabolic
Create Curved Mesh Elements	Yes
Max. Turn Angle on Curves (Deg.)	60
Max. Adjacent Mesh Size Ratio	1.5
Max. Aspect Ratio	10
Minimum Element Size (% of average size)	20

Table 1. (a)

Density	7.85E-06 kg / mm <sup>3</sup>
Young's Modulus	210000 MPa
Poisson's Ratio	0.3
Yield Strength	207 MPa
Ultimate Tensile Strength	345 MPa
Thermal Conductivity	0.056 W / (mm C)
Thermal Expansion Coefficient	1.2E-05 / C
Specific Heat	480 J / (kg C)

Table 1.(b)

Name	Minimum	Maximum
Safety Factor		
Safety Factor (Per Body)	14.47	15
Stress		
Von Mises	0 MPa	14.31 MPa
1st Principal	-3.175 MPa	15.25 MPa
3rd Principal	-15.47 MPa	1.782 MPa
Normal XX	-12.74 MPa	13.61 MPa
Normal YY	-6.003 MPa	6.963 MPa
Normal ZZ	-13.86 MPa	4.617 MPa
Shear XY	-5.99 MPa	4.9 MPa
Shear YZ	-4.279 MPa	3.837 MPa
Shear ZX	-4.737 MPa	3.352 MPa
Reaction Force		
Total	0 N	971.5 N
X	-44.41 N	97.16 N
Y	-962.4 N	847.4 N

Table 1. (c)

Table 1 (a)Element Size (b) Properties (c) Forces

## V. CONCLUSION

We can conclude that it is less time consuming, worker friendly, portable machine respective to the conventional method of tilling. It assures of maximum work done with minimum work effort. It helps us to extend imagination, engineering skills and fundamental knowledge. This machine is developed to reduce the time and effort required for weed removing and tilling up to the great extent. Also this machine manufacturing cost is less as compared to other.

By selecting this project we could understand, become familiar and know the details of agricultural technology, with the help of this semi automatic machine we are trying to reduce labour cost, time of a middle class and small sector farmers. This is our little effort to make comfort to our farmers who feed our country. This project also teaches us the working in unity with proper co-ordination which is established within the project group. It also enhances the thinking or filling of mutual co-operation in the project group. Also the project members learnt to fabricate any model according to requirements. All the manufacturing processes are carried out with a great concentration and efforts.

## REFERENCES

1. [https://link.springer.com/chapter/10.1007/978-90-481-9277-9\\_17](https://link.springer.com/chapter/10.1007/978-90-481-9277-9_17)
2. <https://ageconsearch.umn.edu/record/262169/>
3. <https://www.sciencedirect.com/science/article/abs/pii/S0168169917301333>
4. <https://www.cambridge.org/core/journals/weed-technology/article/technology-for-automation-of-weed-control-in-specialty-crops/795CD08C90935A3BAEA47D71708AD302>
5. [http://www.scielo.org.co/scielo.php?pid=S0120-62302016000300124&script=sci\\_arttext&lng=en](http://www.scielo.org.co/scielo.php?pid=S0120-62302016000300124&script=sci_arttext&lng=en)
6. [https://link.springer.com/chapter/10.1007/978-3-319-19324-3\\_46](https://link.springer.com/chapter/10.1007/978-3-319-19324-3_46)
7. <https://www.jstor.org/stable/44490629?seq=1>
8. <https://www.cabdirect.org/cabdirect/mobile/abstract/?target=%2fcabdirect%2fmobile%2fabstract%2f20083321730>
9. <https://onlinelibrary.wiley.com/doi/abs/10.1002/ps.5337>
10. Andrew Musgrave, C. S., Lu, N., Sato, R., & Nagai, K. (2019). Gallium–tin alloys as a low melting point liquid metal for repetition-pulse-laser-induced high energy density state toward compact pulse EUV sources. *RSC Advances*, 9(24), 13927–13932. doi:10.1039/c9ra01905g
11. C. M. Arun kumar and P. C. Mukesh kumar., Review on Electronics Cooling Systems. *Advances*
12. Guyue Bo, Long Ren, Xun Xu, Yi Du & Shixue Dou (2018) Recent progress on liquid metals and their applications, *Advances in Physics: X*, 3:1, 1446359, DOI: 10.1080/23746149.2018.1446359
13. Yunxia GAO<sup>1</sup>, Lei WANG<sup>1</sup>, Haiyan LI<sup>1</sup>, Jing LIU<sup>1</sup>, Liquid metal as energy transportation medium or coolant under harsh environment with temperature below zero centigrade *Front. Energy* » 2014, Vol. 8 » Issue (1) : 49-61. DOI: 10.1007/s11708-013-0285-3
14. Janis Galins, Aigars Laizans, Ainars galins, review of cooling solutions for compact electronic devices DOI: 10.22616/RRD.25.2019.030
15. Teng Li · Yong-Gang Lv · Jing Liu · Yi-Xin Zhou A powerful way of cooling computer chip using liquid metal with low melting point as the cooling fluid DOI 10.1007/s10010-006-0037-1
16. Roshan Manoj A K<sup>1</sup>, Abhilash C<sup>2</sup>, Low Melting Point Alloys: A Review ISSN: 2278-0181 Vol. 8 Issue 04, April-2019



**Impact Factor:  
7.569**



# INTERNATIONAL JOURNAL OF INNOVATIVE RESEARCH

IN SCIENCE | ENGINEERING | TECHNOLOGY

 **9940 572 462**  **6381 907 438**  **ijirset@gmail.com**



[www.ijirset.com](http://www.ijirset.com)

Scan to save the contact details