



e-ISSN: 2319-8753 | p-ISSN: 2347-6710

# IJIRSET

International Journal of Innovative Research in  
**SCIENCE | ENGINEERING | TECHNOLOGY**



# INTERNATIONAL JOURNAL OF INNOVATIVE RESEARCH

IN SCIENCE | ENGINEERING | TECHNOLOGY

Volume 10, Issue 7, July 2021

**ISSN** INTERNATIONAL  
STANDARD  
SERIAL  
NUMBER  
INDIA

Impact Factor: 7.569



9940 572 462



6381 907 438



ijirset@gmail.com



www.ijirset.com



# Experimental Investigation of Effect of Corrosion on Reinforced Concrete Beam

Uday Nagpure<sup>1</sup>, Ms. Deepa Telang<sup>2</sup>

P.G. Student, Department of Civil Engineering, G.H. Rasoni Acadmey of Engineering and Technology, Nagpur, India<sup>1</sup>

Associate Professor, Department of Civil Engineering, G.H. Rasoni Acadmey of Engineering and Technology,  
Nagpur, India<sup>2</sup>

**ABSTRACT:** Corrosion effect on reinforced concrete is one of major issue in construction industry. Reinforced concrete is widely used in construction industry due to its extensive accessibility. The outcome of steel corrosion includes damages cross section of steel area, cracks in concrete due to increasing expansive pressure. In coastal region due to effect of chloride deterioration of steel is cause which resulting into reinforcement corrosion which affects service and life of RCC structure. The bond strength between the steel reinforcing bar and concrete is thus reduced and the strength of the structure deteriorates. The objective of this study is to investigate the effect of corrosion on torsional strength, shear strength and flexural strength of reinforced concrete beams. We used accelerated corrosion technique to induced corrosion on reinforced concrete experimentally in laboratory. Using M20 grade with ordinary Portland cement, beam specimens are casted. Universal testing machine (UTM) is used flexural and shear strength and load and deflection behavior is analyzed. Specially prepared setup is used for torsional strength.

**KEYWORDS:** Accelerated corrosion technique, torsional strength, shear strength, flexural strength, load deflection.

## I. INTRODUCTION

Reinforced concrete (RC) is the foremost wide used building component due to its extensive accessibility. Reinforced materials are embedded within the concrete in such a way that the two materials resist the applied forces along. The concrete's compressive strength and steel's tensile strength form a strong bond to withstand these stresses over a prolonged span. Plain concrete is not appropriate for many constructions works, as a result of it cannot simply face up to the stresses generated by vibrations, wind, or alternative forces. Its utilized in completely different engineering applications worldwide like buildings, bridges, dams, and newly as a foundation system for wind turbine towers. RC structures are subject to a range of distinct ambient as well as marine, industrial and strengthened concrete applications, nuclear, and other extreme environments. Torsional strength is measure of ability of material to resist a twisting load. When the ultimate strength of the material is subjected to torsional loading, a material supports only the ultimate torsional stress before it breaks. In construction industry several structural components in building and bridges are subjected to vital torsional moments that have an effect on design. Examples of such components are spandrel beams in structures, beams in eccentrically charged multi-deck bridge frames, and box girder bridges. Shearing stresses which are calculated nearer to periphery are caused by torsional moments acting on cross section of beam. Generally, failures occurred by following factors: mistake in design calculation and flaw in detailing of reinforcement, blunder in construction practices, changing purpose of structure, wind and seismic action, depletion or drooping reinforcement steel area, it all happen because destructive attack of chloride ion resulting into causing corrosion. Corrosion is conversion of iron into its oxide and hydro-oxides in presence of oxygen and water. Passive film of calcium hydro-oxides around steel reinforced bar which basic in nature near PH around 12-13, That prevents corrosion. Carbonation of concrete i.e. chloride and CO<sub>2</sub> damages filmand CO<sub>2</sub> reacts with CA(OH)<sub>2</sub> it forms carbonates and bicarbonate of hydro-oxides with some amount of water, which reduces the PH. In this study effect of corrosion on torsional strength is studied on the basis of varying percentage of corrosion. The corrosion percentage is 0%,3%,6%,9%

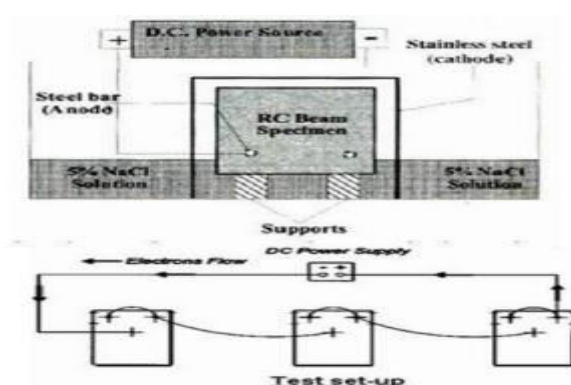
## II. OBJECTIVES

- To study effect of reinforcement corrosion on RC beam to determine torsional strength, shear strength, flexural strength of reinforced concrete beams.
- Develop a corrosion measurement device setup to calculate percentage of corrosion digitally.

- By using induced accelerated corrosion on steel (TMT) bars, determine effect of corrosion on reinforce concrete beam.
- Develop a test set up to carry out torsion-test on the RCC beam.

### III THEORETICAL CONTENTS

- Accelerated Corrosion Technique: In this study the electrochemical corrosion method is used to induce accelerated corrosion in bars emended in concrete. To induce current in bars DC power supply of 48V and 4 amps is used. 5% concentrated NaCl is used as electrolyte solution. specimens are place in NaCl solution for a day to ensure fully saturated condition. Stainless steel bar is used as cathode and bars embedded in beam are used as anode



Calculation of time for different percentage of corrosion

$$M_{th} = \frac{W I_{app} T}{F}$$

Where:  $M_{th}$  = theoretical mass of rust per unit surface area of the bar (g/cm<sup>2</sup>)  $W$  = equivalent weight of steel (27.925 g)  $I_{app}$  = applied current density (Amp/cm<sup>2</sup>)  $T$  = duration of induced corrosion (sec)  $F$  = Faraday's constant (96487 Amp-sec).

Time calculation for different percentage of corrosion

Percentage of Corrosion	Current (Amps)	Duration of Corrosion (Hours)
2.5	2.5	25.7
5	2.5	51.4
7.5	2.5	77.07

### IV. METHODOLOGY

This study is experimental study to analyze behavior of RCC beams under the influence of corrosion. Concrete mix design is done according to IS10262 (2009). Concrete mix design is prepared to get M20 grade of concrete using OPC and water cement ratio of 0.5 is used. Details of beam reinforcement: The beams designed as underreinforced concrete beams and span of beam was 700 mm, width 150 mm, depth 150 mm.

- Top longitudinal main bars: 2 nos. 10 mm dia.
- Bottom longitudinal main bars: 2 nos. 10 mm dia.
- Stirrups: 2-legged 8 mm dia. stirrups at 110 mm C/C.

Casting of beams is done according to IS standards and 28 days curing of beams is done. All beams are kept for curing in same environmental condition. Corrosion of beams is done according to theory mentioned in theoretical content. Beams are tested in universal testing machine (UTM) for bending and shear capacity. Three-point bending test is used for bending and shear capacity. And specially prepared setup is used for torsional testing.

## V. EXPERIMENTAL RESULTS

After completing a mix design next step is casting of specimens. Cube and beams are casted using M20 grade concrete details of specimen are as follow:

SPECIMEN	SIZE (mm)	NO. OF SPECIMENS
CUBE	150 X 150	3
BEAM	150 X 150 X 700	24

The test specimen was an RC beam with a rectangular cross section. A specimen cross section was designed with a width of 150mm, an overall depth of 150mm, an effective depth of 125mm, two bars of 10mm diameter at top and two bars of 10mm diameter at bottom, 8mm diameter stirrups provided. The overall length of the beam was chosen as 700 mm with a 600 mm distance between supports. The stirrups had a clear cover of 25 mm and a spacing  $s$  of 110mm. The specimens were tested under three-point bending. Concrete mixture proportion was cement: water: sand: gravel = 1:0.5:1.5:3



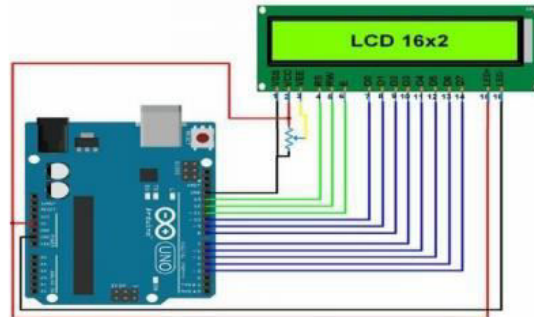
Accelerated Corrosion: Equipment used for accelerated corrosion are voltmeter, ammeter, DC power supply etc. After 28 days of curing of beams the test beams were put into 5% concentrated NaCl solution by weight of water in tank as shown in picture below. Depth of water in tank is kept constant throughout the corrosion process. Steel bars in beam are used as anode and stainless-steel bar immersed in water is act as cathode.



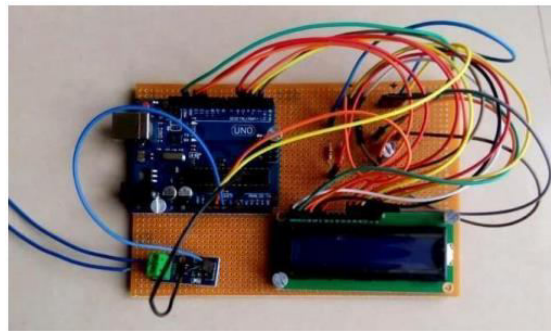
## VI. CORROSION MEASUREMENT

Components-Arduino Uno, LCD (16\*2), ACS 712 (Current sensor 5 amp), 10k pot, Resistor 560  $\Omega$ , Jumpers. Methodology-The LCD is interfaced with the Arduino with respect to given diagram.





The 10k pot is used to control intensity of the LCD. The ACS 712 capable of sensing unidirectional as well as bidirectional current (AC/DC). There are various models capable of sensing 5A/20A/30A current. The module used in this research is capable of sensing 5A current. The current sensor yields voltage as output proportional to the change in current. This voltage is given to ADC of Arduino. The code for Arduino is written such that it displays on time of the circuit, current applied to circuit and percentage of corrosion (as per formula).



Circuit of Corrosion measurement

Advantages:-

1. No need of external ammeter to measure current.
2. The percentage of corrosion is calculated
3. Completely digital device.
4. No need to keep track of “On Time” manually.

## VII. RESULTS AND DISCUSSION

This chapter deals with the results obtained from the testing of the samples Compressive test Cubes were tested for compressive strength( $f_{ck}$ ).The results obtained are tabulated in Table as follow: Compressive strength of cubes

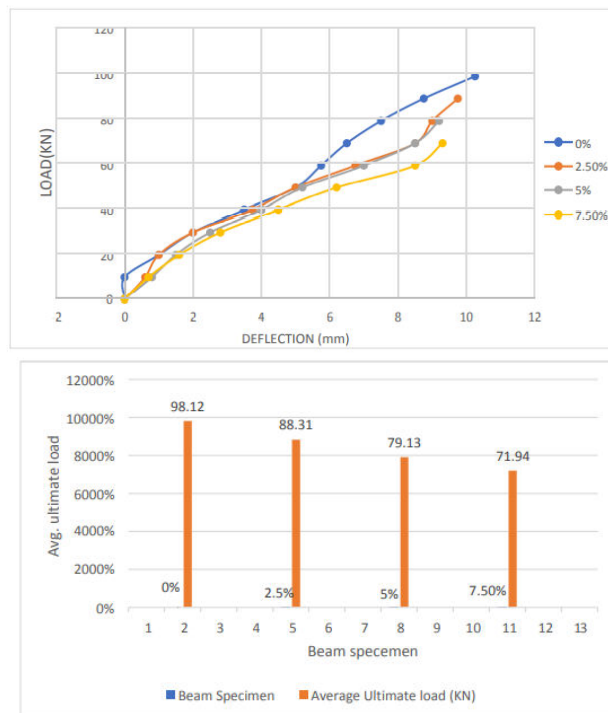
Samples	Failure Load (kN)	(kN) Compressive Strength of the Beam (N/mm <sup>2</sup> )	Mean Compressive Strength (N/mm <sup>2</sup> ) Cube
Cube 1	530	23.56	25.04
Cube 2	610	27.11	
Cube 3	550	24.44	

### Three Point Bending Test

Results of three-point bending test are tabulated in table given below:

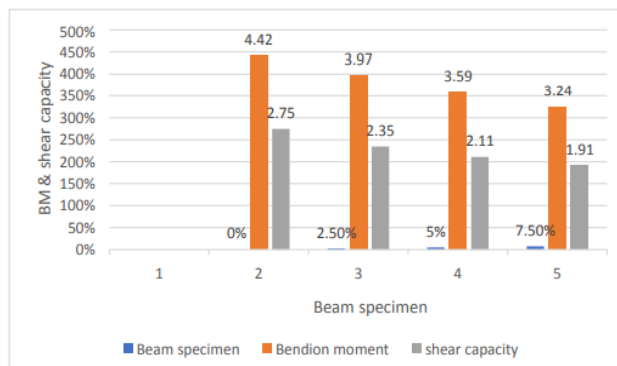
Beam Specimen	Ultimate Load (KN)	Average Ultimate load (KN)	Deflection (mm)	Average Deflection (mm)
0%	101	98.12	10.5	10.25
	93.19		10.7	
	100.1		9.55	
2.5%	89.9	88.31	11	9.75
	86.23		8.3	
	88.74		9.95	
5%	78.48	79.13	8.25	9.2
	78.48		10.75	
	80.442		8.6	
7.50%	73.575	71.94	8.5	9.3
	75.53		8.7	
	66.708		10.7	

### Load vs deflection for all specimens:



### Bending Moment and Shear Capacity Of Beams

Beam specimen	Bending moment (KNm)	Shear force (KN)	shear capacity (KN)
0%	4.42	49.06	2.75
2.50%	3.97	44.16	2.35
5%	3.59	39.57	2.11
7.50%	3.24	35.97	1.91

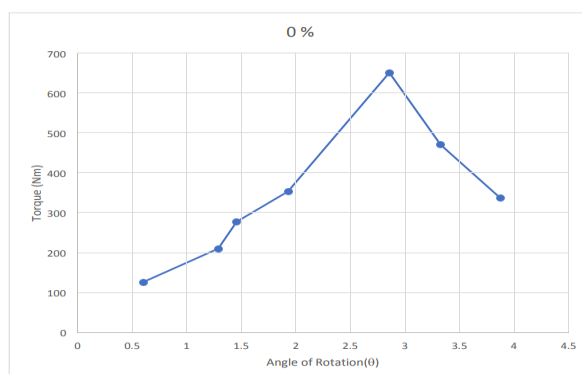


### Torsion Test:

Results of torsion test are as given below:

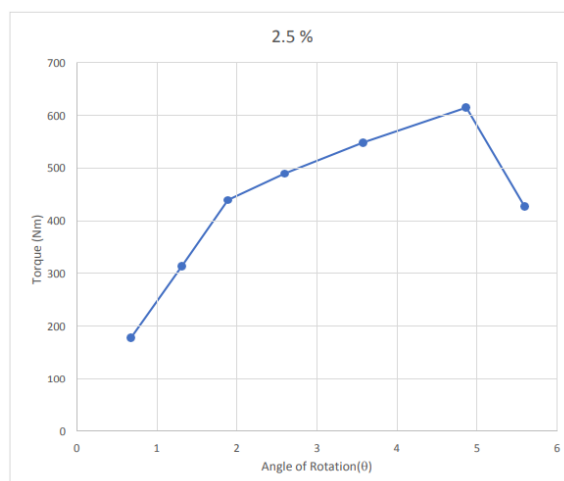
#### 0% corrosion:

Torque (Nm)	126.3	210.5	277.86	353.67	651.52	470.9	336.8
Angle of Rotation (θ)	0.6	1.29	1.46	1.93	2.86	3.33	3.88



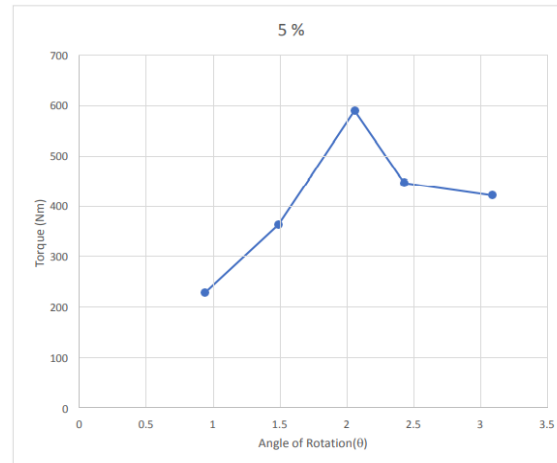
#### 2.5 % corrosion:

Torque (Nm)	176.8	311.6	437.9	488.5	547.4	613.6	425.6
Angle of Rotation (θ)	0.68	1.31	1.89	2.6	3.58	4.87	5.6



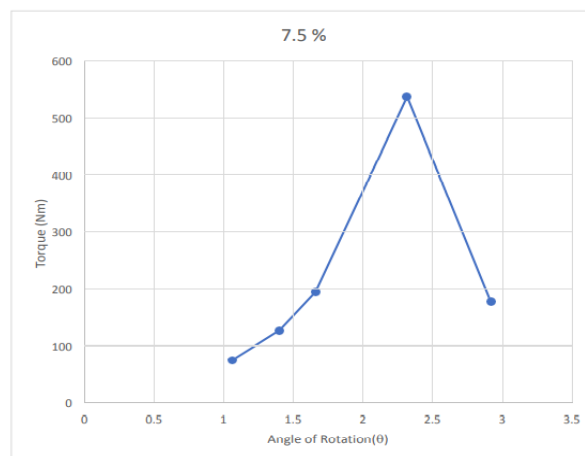
**5 % corrosion:**

Torque (Nm)	227.2	362.2	588.6	446.27	421
Angle of Rotation( $\theta$ )	0.94	1.49	2.06	2.43	3.09



**7.5 % corrosion:**

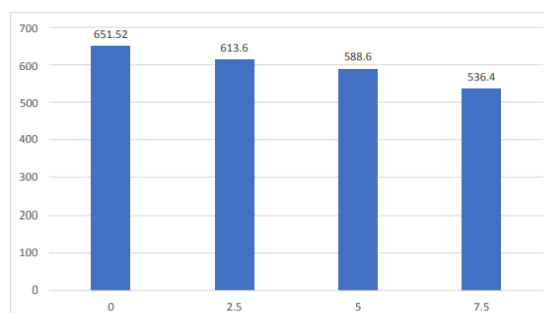
Torque (Nm)	74.5	126.3	193.7	536.4	176.8
Angle of Rotation ( $\theta$ )	1.06	1.4	1.66	2.32	2.92





**Effect Of Corrosion On Maximum Torque:**

Specimen	Max Torque (Nm)
0%	651.52
2.5%	613.6
5%	588.6
7.5%	536.4

**VIII. CONCLUSION**

- It is seen that moment carrying capacity and shear capacity of corroded beams is less than that of controlled beam specimen.
- Bending moment decreases by 10.2%, 18.8%, 26.7% for 2.5%, 5%, 7.5% respectively as compared to control beam i.e. 0% corrosion. BM decreases from 4.42 kNm for 0% to 3.24 kNm for 7.5% corrosion.
- Shear capacity decreases by 14.5%, 23.3%, 30.5% for 2.5%, 5%, 7.5% respectively compared to control beam i.e. 0% corrosion. Shear capacity reduces from 2.75 for 0% to 1.91% for 7.5% corrosion
- Maximum load carrying capacity in three point bending test decreases by 10%, 19.3%, 26.7% for 2.5%, 5%, 7.5% respectively as compared to control beam i.e. 0% corrosion. Ultimate load reduces from 98.12 kN for 0% to 71.94 kN for 7.5% corrosion.
- Maximum torque is decreases by 5.8%, 9.7%, 17.7% for 2.5%, 5%, 7.5% respectively as compared to control beam i.e. 0% corrosion. Max. torque reduces to 536.4 Nm for 7.5% corrosion from 651.52 Nm for 0% corrosion.

**REFERENCES**

- [1] Aryanto, A. & Shinohara, Y.(2012), "Bond Behavior between Steel and Concrete in Low Level Corrosion of Reinforcing Steel"
- [2] Bhalgamiya, S., Tivadi, G. and Jethva, M.(2018), "Techniques For Accelerated Corrosion Test Of Steel Concrete For Determine Durability", International Research Journal of Engineering and Technology, 5(4), April 2018
- [3] Chaitanya, N. and Krishna, N.(2014), "An Experimental Study of Flexural Strength of Reinforced Concrete Beam Due To Corrosion", IOSR Journal of Mechanical and Civil Engineering, 11(4), 98-109
- [4] El-Sayed, A. K., Hussain, R. R. and Shuraim, A. B.(2016) "Effect of stirrup corrosion on the shear strength of reinforced concrete short beams", Journal of Civil Engineering and Management, 22(4), 491-499
- [5] Rashidi, M. and Takhtfiroozeh, H.(2016), "The Evaluation of Torsional Strength in Reinforced Concrete Beam", Mechanics, Materials Science & Engineering, December 2016
- [6] Thomas, A. and Hameed, A. S. (2017), "An Experimental Study On Combined Flexural And Torsional Behaviour Of RC Beams", International Research Journal of Engineering and Technology, 4(5), May 2017
- [7] Ahmad, S.(2009) "Techniques for inducing accelerated corrosion of steel in concrete", The Arabian Journal for Science and Engineering, 34(3C)
- [8] Rahal, K. N.(2011)" Torsional strength of reinforced concrete beams", Canadian Journal of Civil Engineering, Vol. 27
- [9] Shetty, A., Venkataramana, K. and Narayan, K. S. (2014), "Effect of corrosion on flexural bond strength", J. Electrochem. Sci. Eng., 4(3) (2014), 123-134
- [10] Tudu, C. (2012), "Study Of Torsional Behaviour Of Rectangular Reinforced Concrete Beams Wrapped With GFRP", Department of Civil Engineering National Institute of Technology Rourkela Odisha, India, May 2012



- [11] Csikos, A. And Hegedus, I. (1998), “Torsion of reinforced concrete beam”, 2 nd int. Phd.symposium in civil engineering 1998 Budapest
- [12] Lingga, N. M.(2016), “ Behavior of Concrete Beams with Corroded Reinforcement Retrofitted with Carbon Fiber Reinforced Polymer”, Civil and Environmental Engineering Master's Project Reports, pp.29
- [13] Mr. Rajesh H. Davda1, Mr. Noor Mohammed, “ Text Detection, Removal and Region Filling Using Image Inpainting”, International Journal of Futuristic Science Engineering and Technology, vol. 1 Issue 2, ISSN 2320 – 4486, 2013
- [14] UdayModha, Preeti Dave, “ Image Inpainting-Automatic Detection and Removal of Text From Images”, International Journal of Engineering Research and Applications (IJERA), ISSN: 2248-9622 Vol. 2, Issue 2, 2012
- [15] Muthukumar S, Dr.Krishnan .N, Pasupathi.P, Deepa. S, “Analysis of Image Inpainting Techniques with Exemplar, Poisson, Successive Elimination and 8 Pixel Neighborhood Methods”, International Journal of Computer Applications (0975 – 8887), Volume 9, No.11, 2010



**Impact Factor:  
7.569**



# INTERNATIONAL JOURNAL OF INNOVATIVE RESEARCH

IN SCIENCE | ENGINEERING | TECHNOLOGY

 **9940 572 462**  **6381 907 438**  **ijirset@gmail.com**



[www.ijirset.com](http://www.ijirset.com)

Scan to save the contact details