



e-ISSN: 2319-8753 | p-ISSN: 2320-6710

# IJIRSET

International Journal of Innovative Research in  
**SCIENCE | ENGINEERING | TECHNOLOGY**

# INTERNATIONAL JOURNAL OF INNOVATIVE RESEARCH

IN SCIENCE | ENGINEERING | TECHNOLOGY

Volume 10, Issue 6, June 2021

**ISSN** INTERNATIONAL  
STANDARD  
SERIAL  
NUMBER  
INDIA

**Impact Factor: 7.512**

9940 572 462

6381 907 438

[ijirset@gmail.com](mailto:ijirset@gmail.com)

[www.ijirset.com](http://www.ijirset.com)

# Implementation on Pixel Based Random Signature Verification

Prof .Ajit Gedam<sup>1</sup>, Bhagyashri Batta<sup>2</sup>, Gautami Ghodake<sup>3</sup>, Devisha Shinde<sup>4</sup>, Shweta Deokate<sup>5</sup>

Lecturer, Department of Computer Engineering, AISSMS Polytechnic, Pune, India<sup>1</sup>

Student, Department of Computer Engineering, AISSMS Polytechnic, Pune, India<sup>2,3,4,5</sup>

**ABSTRACT:** In today's global forgery of signature could be very extensively increased. There are many state-of-the-art medical strategies to become aware of accurate signature. As signatures are extensively accepted bio-metric for authentication and identity of someone due to the fact each person has a distinct signature with its specific behavioral property, so it is very much necessary to prove the authenticity of signature itself. A big growth in forgery instances relative to signatures precipitated a want of Signature reputation system. However human signatures may be treated as a photo and diagnosed the usage of laptop imaginative and prescient and neural community strategies. In this paper we've taken a hard and fast of educated photos and saved their functions in a database and to check an unknown photo we compare the functions and calculating the matching factors. We have taken into consideration 70 % as threshold for human signature reputation.

**KEYWORDS:** Signature verification, pixel-based method

## I. INTRODUCTION

Signature has been a distinguishing characteristic for character identity via ages. But to make this conventional approach evolve with the present day net technology, green and dependable strategies of computerized signature verification want to be evolved if authenticity is to be proven on a everyday basis. The signature verification hassle is in idea a sample reputation project used to discriminate classes, the unique and forgery signatures. In off-line signature verification the signature template is captured the use of an imaging device, as a result most effective static feature of the signatures are obtained. Offline structures paintings at the scanned picture of a signature. The character want now no longer be gift on the time of verification. Hence off-line signature verification is handy in numerous conditions like file verification, banking transactions etc.. Off-line statistics is a 2-D picture of the signature. Processing Off-line is complicated because of the absence of solid dynamic characteristics. Difficulty additionally lies within the reality that it's mile tough to phase signature strokes because of pretty elegant and unconventional writing styles. The non-repetitive nature of variant of the signatures, due to age, illness, geographic area and possibly to a point the emotional country of the character, accentuates the hassle. All those coupled collectively reason big intra-private variant. A sturdy gadget must be designed which must now no longer most effective be capable of take into account those elements however additionally discover numerous kinds of forgeries. The gadget must neither be too touchy nor too coarse.

## II. LITERATURE SURVEY

[1] Hsin-Hsiung Kao \* and Che-Yen Wen, The authors propose an off-line handwritten signature verification method based on a deep convolutional neural network, DCNN and unique local feature extraction approach. It focuses on learning more from forged signatures than genuine ones. [2] Kumari, K., Rana, S, In this paper, machine learning classifiers are used to verify the signature using four image based features. Six classifiers are trained and tested on BHSig260 dataset and the obtained accuracies have been contrasted. [3] Anamika Jain, Satish Kumar Singh, Krishna Pratap Singh, The proposed architecture is very simple but extremely efficient in terms of accuracy. A custom shallow convolution neural network is used to automatically learn the features of signature from the provided training data. It also contributes an aggregated dataset of signatures consisting of 137 subjects and 467 subjects respectively. Deals only with random forgery detection. [4] George S. Eskander, Robert Sabourin, Eric Granger In this study, a hybrid WI-WD system is proposed, as a compromise of the two approaches. When a user is enrolled to the system, a WI classifier is used to verify his queries. During operation, user samples are collected and adapt the WI classifier to his signatures. Once adapted, the resulting WD classifier replaces the WI classifier for this user. [5] Muhammad



Sharifa, Muhammad Attique Khana, Muhammad Faisala, Mussarat Yasmin and Steven Lawrence Fernandes, The presented system consists of four major steps: preprocessing, features extraction, features selection, and feature verification. Global features in the proposed work comprise of aspect ratio, the area of signature, pure width, pure height and normalized actual signature height. Local features consist of signature centroid, slope, angle, and distance. In features selection component, a genetic algorithm is utilized to find appropriate features set which are later on given to support vector machine for verification. [6] Amir Soleimania Babak N. Araabi and Kazim Fouladi, Unlike existing methods that to verify questioned signatures of an individual merely consider the training samples of that class, DMML uses the knowledge from the similarities and dissimilarities between the genuine and forged samples of other classes too. To this end, using the idea of multitask and transfer learning, DMML train a distance metric for each class together with other classes simultaneously. [7] Sima Shariatmadari, Sima Emadi, Youne Akbari. Proposes a hierarchical one-class convolutional neural network for learning only genuine signatures with different feature levels. In addition, to achieve a clear structure in image, designing hierarchical network architecture based on the coarse-to-fine principle can lead to more precise results. [8] Amruta B. Jagtap, Dattatray D. Sawat, Rajendra S. Hegadi, Ravindra S. Hegad. Uses a new kind of network called siamese network, which is essentially an amalgamation of two CNN's with identical weights and hidden layers, along with a contrastive loss function which helps us calculate how similar the outputs of the two input signatures are and in turn helps us conclude whether they are genuine/forged. [9] Luiz G. Hafemann, Robert Sabourin, Member, IEEE, and Luiz S. Oliveira. In this work, the authors propose a solution for this problem based on meta-learning, where there are two levels of learning: a task-level (where a task is to learn a classifier for a given user) and a meta-level (learning across tasks). In particular, the meta-learner guides the adaptation (learning) of a classifier for each user, which is a lightweight operation that only requires genuine signatures. [10] Gulzar A. Khuwaja and Mohammad S. Laghari suggested Offline Handwritten Signature Recognition using Biometrics, which refers to identifying an individual based on his or her physiological or behavioral characteristics, has the capability to reliably distinguish between an authorized person and an imposter. This paper presents a neural network based recognition of offline handwritten signatures system that is trained with low-resolution scanned signature images.

### III. PROPOSED SYSTEM

The first step is to transform the acquired RGB photo into grey scale photo. This is finished to lessen the complexity and the execution time of the machine. It is straightforward for the machine to paintings with grey scale photographs as opposed to the RGB photographs. Then a cropping set of rules is carried out to the grey scale photo. Cropping is finished to split out exactly the real vicinity of the hobby from the entire photo. This gets rid of the more pixels from the photo accordingly decreasing the processing time. After acquiring the cropped photo the noise that entered at the same time as scanning or through every other supply needs to be removed. For this a Gaussian clear out out at the side of the unsharp clear out out is used. The Gaussian filters easy the photo getting rid of the noise and the unsharp clear out out gets rid of the blur created through the Gaussian clear out out. This filtered photo is then threshold to transform it right into a binary form. Finally the boundary of the signature is extracted from this binary photo the use of the canny facet detector.

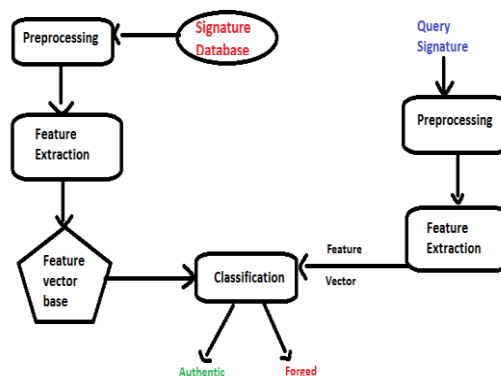


Fig1. Architecture of signature verification



**INPUT SECTION :**

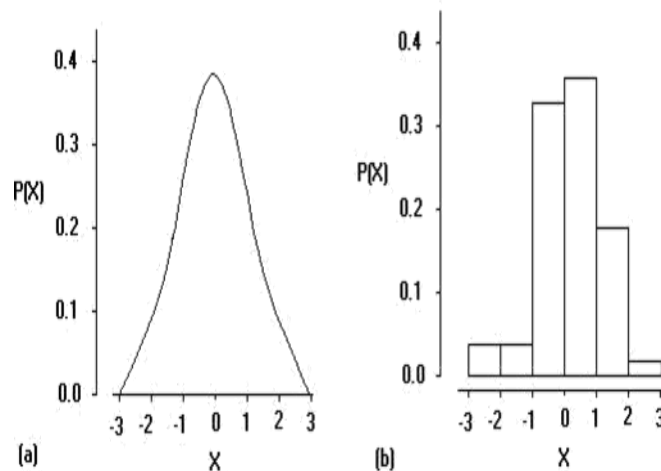
there are inputs to this section. One enter is used for developing new patron account in bank, even as different getting used for uploading the signature for verification the usage of media consisting of scanner, web-cam. For uploading the signature there have to be a duplicate of standardized signature for the corresponding consumer account number. If the patron opens new account then the associated data is stored in database with a few adjustments in step with the requirement. NO you could intervene with the database of the software program as this facility is to be had most effective to the manager of program. The signature to be regarded i.e. the applicable a part of signature is chosen from the photograph and this information is exceeded to the pre-processing block.

**PRE-PROCESSING BLOCK**

The hardware getting used for enforcing the Software gives sure boundaries as we're going to use the scanner, display and VGA of the laptop that have finite resolution (now no longer very high) and capabilities, which in the end outcomes withinside the lack of information on the enter facet of the program. Hence, pre-processing turns into important.

**1. Colournormalization :**

As the person can signal with any pen and with distinctive colored inks, it's far important to transform the signature in black and heritage in white. To enforce this we use histogram sort of technique. One of the very best methods of acquiring an approximate density characteristic  $p(x)$  from sampled information if no parametric shape is thought for the underlying density is to shape a histogram of the information as proven in determine below.



(a)The true normal density from which 50 random numbers were chosen  
 (b)A histogram of 50 normally distributed random numbers with 6 intervals

A histogram is a handy manner to explain the facts. To shape a histogram; the facts from a unmarried magnificence are grouped into intervals. Over every interval, a vertical rectangle is drawn, with its location proportional to the variety of facts factors falling into that interval. It essentially offers us the data approximately the variety of pixels in an photo of unique intensity / luminosity. For colored images, luminance may be calculated as

$$L=0.3*R+0.59*G+0.11*B$$

Depending upon the end result of histogram color normalisation may be implemented such that signature will become black and heritage will become white.

**2. Scaling :**

As we're going to put into effect morphological idea for signature detection, signature need to be significantly of big length as dilation operation is used for in addition processing. Also the signature ought to now no longer be too big because it will boom the processing time. Hence, right scaling of the signature ought to be done.



### 3. Filtering :

After scaling, the signature turns into pretty blocky. To lessen this impact i.e. blockiness of the signature we use averaging sort of clear out out. Smoothing filters are used for blurring and for noise discount. Blurring is utilized in pre-processing steps, consisting of elimination of small information from an picture earlier to (big) item extraction, and bridging of small gaps in strains or curves. Noise discount may be executed via way of means of blurring with a linear clear out out and additionally via way of means of nonlinear filtering. Blockiness impact need to be decreased due to the fact after thinning operation it produces shaky strains.

### 4. Thinning :

The tip of the pen getting used for the signature won't be standardised for this reason thinning need to be carried out. Basically thinning is a information discount system of an item till it turns into one pixel wide, generating a skeleton of the item.

### 5. Rotation :

It can be pretty viable that the signature to be known is turned around at a positive angle. In order to keep away from any misalignment with appreciate to the standardised signature it turns into important to rotate the signature to be known thru precise angle.

### PROCESSING BLOCK :

For processing of the signature, we use pixel with the aid of using pixel contrast method. We additionally use a number of the morphological operations which include erosion, dilation. After pre-processing of the standardised signature the take a look at sample is advanced the use of the dilation operation. Flow-chart for the era of take a look at sample is defined previously. Now the signature to be acknowledged is thickened with the aid of using a few amount. The standardised signature and the signature to be checked are EX-ORED to provide the output end result which offers us the complete statistics approximately the wide variety of matching pixels, lacking pixels, out of variety pixels etc. The desire block offers tolerance choices to the numerous blocks in line with the manager or with the aid of using default programmer calculates tolerances with the aid of using correlating standardised signature.

## IV. FEATURE EXTRACTION AND IMPLEMENTATION

### COLOUR NORMALISATION :

In popularity technique shade normalization may be very essential. The signatures may be achieved on any paper with exceptional shade inks, therefore shade normalization is used wherein we make the signature BLACK and the heritage is made WHITE. Due to the photograph scaling technique the photograph will become blocky; therefore we carry out a smoothing operation, which might also additionally introduce gray sun sunglasses to the signature. Hence the shade normalization is re initiated.

### IMAGE SCALING :

The signature is needed to be nicely scaled. This is achieved as big signatures could take longer time to technique .In case of small signature template the test sample isn't generated nicely, which might also additionally motive incorrect results. So if the signature is just too huge then it's far scaled to lessen its length or if the signature is small then it's far enlarged for correct test sample generation.The general length of the photograph utilized in our software is four hundred pixels width or height, most of those. If the signature width or the peak is greater than the desired general then, the photograph is scaled to the noted general. Also if the signature is smaller than the noted general then, it's far enlarged.After scaling the signature will become blocky, therefore smoothing clear out out is implemented to do away with the spike edges. Then shade normalization is executed to do away with the gray sun sunglasses.

### FILTERS :

#### 1 SMOOTHENING FILTERS:

Smoothing filters are used for blurring and for noise reduction. Blurring is utilized in preprocessing steps, including elimination of small info from an photograph previous to item extracting, and bridging of small gaps in traces or curves.

#### 2 LOW PASS FILTER USED:



The clear out out utilized in our software is a easy low byskip clear out out. After the scaling operation, both expand the smaller signature, or making smaller signature big makes the photograph blocky. Hence to smoothen the photograph we use the low byskip clear out out. It is a three x three low byskip clear out out. The low byskip clear out out is proven withinside the following parent.

1 1 1  
1 1 1  
1 1 1

**THINNING :**

A change of abrasion referred to as thinning converts any elongated elements or strips withinside the photograph irrespective of their bits, into slender strips which can be best approximately one pixel huge, however are nonetheless approximately so long as the authentic strips. The slender strips lie close to the centres of the authentic huge strips. Thinning can be useful, for example, in reading photographs that incorporate finger prints or handwriting. Also, if the output of an facet detector has been threshold to locate the rims in an photograph, the rims can be a couple of pixel huge in a few places. The function of those edges can be subtle with the aid of using thinning the facet-detected photograph. The foremost trouble with the usage of easy erosion is that eroding a strip sufficient to motive the widest a part of it to be best one pixel huge produces gaps withinside the slender elements of it. The following set of rules assumes that areas are 4-linked, however they could without problems adjust to expect 8-connectedness. The thinning set of rules, with updating of the photograph after every pixel is removed, includes the subsequent steps. The photograph is scanned left to proper, pinnacle to backside. Each item pixels that has a heritage pixel as aright 4-neighbor is removed, furnished that doing away with the pixel could now no longer motive any nearby chain-breaking and pixel isn't on the cease factor. Eliminating an item pixel p reasons nearby chain-breaking if, while a three x three masks is concentrated at p and p is eliminated, of the item pixels withinside the masks that in which formerly 4-linked with the aid of using a series withinside the masks will become disconnected. For example, doing away with the centre pixel in every of the subsequent three x three areas breaks a series however no chain is damaged withinside the following areas. However, the canter pixel withinside the vicinity at the proper under could now no longer be eliminated due to the fact it's far an cease factor. An item pixel is an cease factor if it has precisely one 4-neighbour withinside the item. In the parent the uppermost pixel is eliminated, however the pixel below it isn't eliminated as it will become an cease factor while the pixel above it's far eliminated.

As withinside the algorithms with updating at every pixel, the manner is repeated for item pixels which have heritage pixels on their left, pinnacle, and backside. This set of rules lets in a few elongated vicinity to end up a piece shorter however generates a end result with fewer branches than the set of rules with updating.

**IMAGE ROTATION :**

Rotation is likewise the a part of the normalization. As it isn't essential that signature alevn though correct, is likewise aligned in angular style with admire to the authentic signature this is general signature withinside the database. Therefore, this system determines the perspective wherein the signature below attention must be circled. If the perspective is inside positive unique limit, then it's far circled; else the signature is rejected for similarly processing. The following diagram explains how an photograph is circled. Each block withinside the photograph represents the pixel of the photograph. The Formulae used for the rotation are as follows

$$x' = x r + ( x - x r ) \cos \theta - ( y - y r ) \sin \theta$$
$$y' = y r + ( x - x r ) \sin \theta + ( y - y r ) \cos \theta$$

**Overlapping and locating the Percentage Matching :**

The essential step withinside the popularity technique is the overlapping of the 2 signatures. The general signature is opened in a photograph container and the test sample is generated for that photograph. Then the check signature is processed and the perspective of rotations are found. If there may be first rate alternate withinside the perspective of rotation, the check signature is circled via the distinction perspective. Then the 2 photographs are overlapped to generate the very last test sample. The very last test sample is then analyzed as mentioned above to locate the proportion matching.

**STEPS IN THE RECOGNITION PROCESS :**

- Firstly the signature to be diagnosed is opened (imported)
- The operations including normalization, thinning, scaling are executed.
- The general signature withinside the database is opened.
- The perspective of rotation of the check signature is calculated.
- If required, the check signature is circled with the aid of using the distinction perspective, to compensate the perspective alternate.
- The centroids for each the photographs are found.
- The test sample is generated for the usual photograph.
- According to the centroids the check photograph is moved after which placed on the test sample.
- The resultant sample is analyzed and the matching percent is calculated.
- According to the choice thresholds the choice is given approximately the validity of the signature.

After walking and executing application end result of mission is proven below :

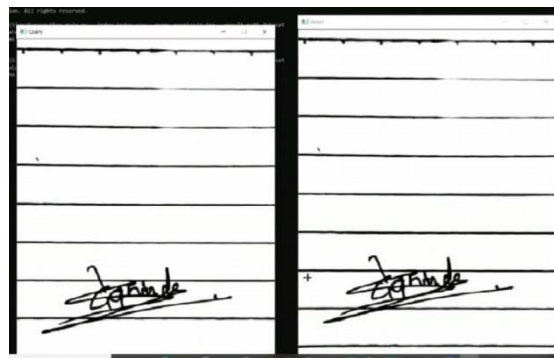


Fig 1

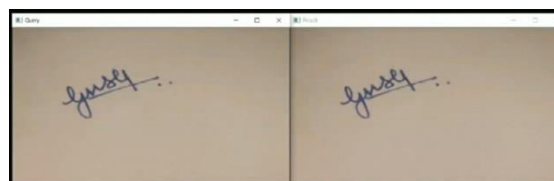


Fig 2

**V. CONCLUSION**

In our task, we've evolved an green signature verification device. In this task, we used Image processing that is one of the maximum trending and maximum used area in recent times for capabilities like photo detection, fingerprint verification etc. This task facilitates in controlling human mistakes in signature verification and additionally makes the signature verification accurate, smooth and faster. It additionally makes the paintings less complicated for expertise and executing it via way of means of every body with none information of photo processing. If any financial institution or any organization makes use of this device the clients will sense plenty greater stable and trustworthy. Thus, we advocate that this device brings a alternate withinside the running of numerous banks, businesses etc.

**Future Scope:**

The set of rules evolved with the aid of using us, makes use of diverse geometric functions to signify signatures that correctly serve to differentiate signatures of various persons. Using a better dimensional function area and additionally incorporating dynamic facts collected all through the time of signature also can enhance the overall performance



### ACKNOWLEDGMENT

Thanks to our Guide who always support, help and guide me during our dissertation. Special thanks to Mr. AjitGedam sir who always support our innovative ideas.

### REFERENCES

1. Bhunia AK, Alaei A, Roy PP (2019) Signature verification approach using fusion of hybrid texture features. *Neural Comput Applic* pp 1–12
2. Impedovo D, Pirlo G, Russo M (2014) Recent advances in offline signature identification. In: *Proceedings of the 14th international conference on frontiers in handwriting recognition*, pp 639–642
3. Hafemann LG, Sabourin R, Oliveira LS (2017) Offline handwritten signature verification—literature review. In: *Proceedings of the 7th international conference on image processing theory, tools and applications (IPTA)*, pp 1–8
4. Hafemann LG, Sabourin R, Oliveira LS (2016) Writer-independent feature learning for offline signature verification using deep convolutional neural networks. In: *International joint conference on neural networks (IJCNN)*, IEEE, pp 2576–2583
5. Hezil H, Djemili R, Bourouba H (2018) Signature recognition using binary features and KNN. *IntJBiom* 10(1):1–15
6. Jagtap AB, Hegadi RS (2017) Offline handwritten signature recognition based on upper and lower envelope using eigen values. In: *World congress on computing and communication technologies (WCCCT)*, IEEE, pp 223–226
7. Jagtap AB, Hegadi RS (2018) Siamese network for learning genuine and forged offline signature verification. In: *International conference on recent trends in image processing and pattern recognition*.
8. F. Alonso-Fernandez, M. C. Fairhurst, J. Fierrez, and J. Ortega-Garcia, "Automatic measures for predicting performance in off-line signature," in *Image Processing, 2007. ICIP 2007. IEEE International Conference on*, 2007, pp. I-369-I-372
9. A. N. Azmi, D. Nasien, and F. S. Omar, "Biometric signature verification system based on freeman chain code and k-nearest neighbor," *Multimedia Tools and Applications*, pp. 1-15, 2016.
10. Soleimani A, Araabi BN, Fouladi K (2016) Deep multitask metric learning for offline signature verification. *Pattern Recogn Lett* 80:84–90
11. Gulzar A. Khuwaja and Mohammad S. Laghari "Offline Handwritten Signature Recognition using Biometrics" April 2011 at International Scientific Academy of Technology and Engineering.
12. Shashi Kumar D R and K B Raja "Off-line Signature Verification Based on Fusion of Grid and Global Features Using Neural Networks." *IJCTA*-Volume 2 Issue 4/ July-August 2011
13. Ankit Arora, Aakanksha S. Choubey "Offline Signature Verification and Recognition using Neural Network" August 2013, At International Journal of Science and Research (IJSR), India.
14. Prashanth CR "DWT based Off-line Signature Verification using Angular Features." *IJCA Proceedings on International Conference on Advancements in Engineering and Technology (ICAET 2015)*.
15. V A Bharadi "Off-Line Signature Recognition Systems" *Proceedings of the International Conference and Workshop on Emerging Trends in Technology, ICWET 2010*.
16. Mohammed A. Abdala, "Offline Signature Recognition and Verification Based on Artificial Neural Network", *IJIET* Volume 4- 2016.
17. Nilesh Y. Choudhary, Dr. Umesh. Bhadade, "Signature Recognition & Verification System Using Back Propagation Neural Network". *International Journal of Advanced Research in Computer Science and Software Engineering*, Sept-2015.
18. Ankit Arora and Aakanksha S. Choubey, "Comparative Analysis of Off-line Signature Recognition" Volume 2 Issue 7 (International Journal of Science and Research (IJSR)), India July 2013.





**INNO**  **SPACE**  
SJIF Scientific Journal Impact Factor

**Impact Factor:**  
**7.512**

**ISSN** INTERNATIONAL  
STANDARD  
SERIAL  
NUMBER  
**INDIA**



# INTERNATIONAL JOURNAL OF INNOVATIVE RESEARCH

IN SCIENCE | ENGINEERING | TECHNOLOGY

 **9940 572 462**  **6381 907 438**  **ijirset@gmail.com**



[www.ijirset.com](http://www.ijirset.com)

Scan to save the contact details