



e-ISSN: 2319-8753 | p-ISSN: 2320-6710

IJRSET

International Journal of Innovative Research in
SCIENCE | ENGINEERING | TECHNOLOGY

INTERNATIONAL JOURNAL OF INNOVATIVE RESEARCH

IN SCIENCE | ENGINEERING | TECHNOLOGY

Volume 10, Issue 6, June 2021

ISSN INTERNATIONAL
STANDARD
SERIAL
NUMBER
INDIA

Impact Factor: 7.512

9940 572 462

6381 907 438

ijirset@gmail.com

www.ijirset.com



An Automated Visual Inspection System

Pratik Shende¹, Prof. Chetan Bundele²

U.G. Student, Department of Mechanical Engineering, Prof.Ram Meghe Institute of Technology & Research
Engineering College, Badnera, Maharashtra, India¹

Associate Professor, Department of Mechanical Engineering, Prof.Ram Meghe Institute of Technology & Research
Engineering College, Badnera, Maharashtra, India²

ABSTRACT- An automated visual inspection system is not the panacea that it is made out to be. There are many pitfalls for the unwary company wishing to implement such an inspection system. The major advantages and disadvantages are discussed in this paper. This will increase the probability that anyone installing a visual inspection station will obtain a successful system that meets their needs.

KEYWORDS: Inspection system, Framework, Product Flow.

I. INTRODUCTION

All actual items can be effortlessly distinguished through the picture signature which they present. The picture is, nonetheless, just a portrayal of a predetermined number of the actual attributes of the article under perception and does exclude any of the non-visual qualities, like the mass, sound, or vibration, which might be available. A three-dimensional shading picture contains a significant degree of geological, chromatic, and textural data about the article, while the straightforward parallel picture contains impressively less. The principal issue then, at that point is to settle on the most straightforward picture which will give the ideal data.

The drive towards higher usefulness in the assembling business in South Africa and somewhere else has featured the requirement for an improvement in item assessment. Quite possibly the main components are the examination of electronic congregations. Present investigation techniques depend widely on the utilization of spring-stacked tests fitted into committed test units, and on human vision.

A programmed visual review framework can help the human reviewer yet can't supplant or copy a considerable lot of the special capacities which the person has. In this paper, the chief advantages and inadequacies of visual investigation frameworks in the industry are analyzed with explicit reference to the assessment of printed circuit sheets.

II. THE HUMAN INSPECTOR

The human investigator can't keep up a significant degree of blunder catching for extensive stretches of time. Inside 15 minutes of the beginning of an investigation shift, the blunder catching capability of the auditor can be decreased radically. The quantity of mistakes caused will be affected straight by the intricacy of the assignment and the quantity of segments on the printed circuit load up, the hour of day, and the specific day of the week. Experience acquired in the USA shows that an individual associated with visual examination can be relied upon to discover roughly 70 % of the complete mistakes on an intricate board.

Significant benefits of the human overseer:

- a) Is just marginally influenced by the lighting of the space.
- b) Has awesome deductive forces.
- c) Isn't influenced by various hues of parts.
- d) Isn't influenced by the bewilderment of the board or parts on the board.
- e) Has awesome character acknowledgment.

Significant inconveniences of the human overseer:

- a) Is influenced by weakness, the season of the day, any day of the week.



- b) Can't keep up long-haul consistency.
- c) Needs breaks and rest periods from the assignment.
- d) Can be slower than a machine.
- e) Irregularity between various examiners.

III. TEST JIGS

Potentially the most well-known type of test dance is the bed-of-nails unit comprising of an uncommonly planned and fabricated test gadget with many spring-stacked test tests. These tests connect with vital focuses on the gadget under test. A bed-of-nails review unit must be utilized on sheets that have been uncommonly planned in light of this type of investigation.

The nearby resistances needed between the bed-of-nails test focuses (regularly 0,01 mm at 0,5 mm dispersing between focuses) make this a troublesome technique to apply to the new variety of thick sheets which presently frequently incorporate many surface-mounted gadgets (SMDs). The cutting-edge pattern is to keep expanding the quantity of SMDs on a printed circuit board, with an always expanding segment thickness.

Significant benefits of a test jig:

- a) Is quicker than an individual.
- b) Can be savvy on straightforward items.
- c) Can play out a useful test.

Significant inconveniences of a test jig:

- a) Is committed to a particular item plan.
- b) Can be difficult to execute on little items.
- c) Requires a truly steady and precise item situation.
- d) Can be extravagant for an intricate item.
- e) Can't investigate every one of the segments as can a person.

IV. VISUAL INSPECTION SYSTEMS

The visual examination framework utilizes a camcorder for information assortment and a PC and programming for information investigation. The camcorder catches a picture of the item under test. This is shipped off a PC through a casing grabber card for handling. The product in the PC then, at that point investigations the picture and chooses concerning whether the item passes or bombs the examination.

The conditions under which the video framework works should be very much controlled and should be not difficult to keep up in processing plant conditions. Contingent upon the degree of robotization, a video framework can significantly lessen the errand of the auditor.

Significant benefits of the visual framework:

- a) Is effectively versatile to assess various items.
- b) Can be reinvented disconnected on another machine.
- c) Doesn't get worn out and can work 24 hours out of each day.
- d) Keeps up the consistency of investigation.
- e) Has a normal speed that is higher than that of a person.

Significant disservices of the visual framework:

- a) The lighting conditions should be very much planned and carried out.
- b) Programming should be painstakingly chosen and carried out.
- c) Is bigoted of part minor departure from items.
- d) Doesn't copy the human investigator.
- e) Has no genuine knowledge observed rules.



V. IMPLICATIONS

The examination should be viewed as an overhead cost since it increases the value of the item. The item should, nonetheless, be investigated to guarantee that the quality remaining parts as high as could really be expected. A defective item that is offered to a client can do unsalvageable mischief to the organization's standing. In outrageous cases, bad quality of item reviews can prompt an organization to shut down.

A completely mechanized video investigation framework, then again, will be pricey and is past the methods for everything except the biggest organizations. The framework will keep a reliably significant degree of flaw catching yet can only with significant effort be adjusted to distinguish elective parts from various providers being utilized at various occasions during any creation shift.

The human examiner isn't dependable and can settle on two kinds of mistaken choices:

1. He may acknowledge a defective thing as being all together and permit the item to go through the review station.
2. He may dismiss a decent thing and return it for a fix, creating setbacks and superfluous costs.

No assessment. the framework is absolutely idiot-proof, yet a computerized framework can be adjusted to create preferred outcomes over a human monitor on routine assignments.

VI. CHOICE OF INSPECTION SYSTEM

A dream framework can be of help to the examiner, by featuring the visual qualities of the gadget under test. This can decrease human assessment blunders, Albeit the mix of a dream framework in addition to a person won't be dependable, it will improve the general degree of shortcoming catching.

Effective efficiency by a minimal expense diminishing review framework can essentially improve the chance of blunders on the items being neglected, and by limiting the time spent on examining the item during fabricate.

The investigator can be given an amplified and upgraded picture of the gadget under test, permitting the significant piece of the dynamic interaction to remain straightforwardly under his influence. The measure of human intercession permitted during the investigation might be set at any of various levels. The review station may utilize a low, medium, or undeniable degree of computerization, with a definitive being a completely mechanized gadget requiring no human mediation or oversight.

The examination station should be pretty much as close as conceivable to where the flaw may happen with the goal that the blunder can be caught at the most punctual conceivable chance and redirected for revision. It is desirable to redirect a board for revision after segment inclusion yet before fastening happens instead of after the segments have been bound.

Human controllers become more untrustworthy as the errand turns out to be more mind-boggling. The degree of instability expansions in the direct extent to the time the controller spends on a similar undertaking. This issue emerges in the field of printed circuit investigation both with uninhabited sheets and during the number of inhabitants in the sheets with parts.

Philips of Eindhoven professes to have diminished the entry of get-together mistakes from 5 % to under 0,04 % by utilizing an exclusive vision-helped assessment station on a creation line.

In an examination attempted in 1987 by ETP of Saratoga, they tracked down that computerized investigation frameworks were powerful in catching 97 % of all deficiencies. while under the best conditions a human examiner with no additional guide was just equipped for catching 78 % of the issues.

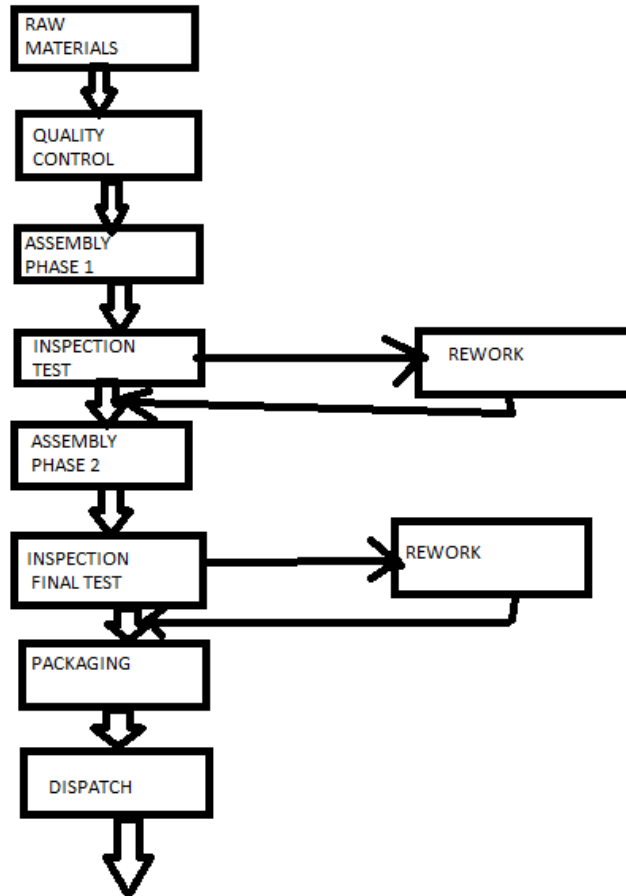


FIGURE 1: Product Flow Along an Assembly line

The figure presents a worked-on outline of the material stream along with a normally printed circuit sequential construction system. Two assessment stations are shown where revision might be required and where picture preparation can be useful in separating blunders.

VII. THE IMAGE-BASED INSPECTION SYSTEM

A picture-based assessment framework can be viewed as helpful regardless of whether it just in part lightens the undertaking of the assessor. Machine vision and robotized review frameworks couldn't measure up straightforwardly with a human monitor. The degree of human discernment and insight associated with ordinary vision and the contrasts between the strategies for the investigation of the two make the human and machine frameworks every one of a kind in their specific application regions.

A skilled reviewer can draw on a tremendous measure of information and experience acquired in the field, which permits him to get signals that are unrealistic to program into a PC as of now. Machine insight is almost perfect in keeping a consistent degree of recognition for an all-around depicted shortcoming yet is still particularly in its earliest stages in having the option to make deductive inductions requiring a medium degree of genuine deductive ability.

The expense of obtaining and introducing a solitary little picture-based investigation station can rapidly end up being a beneficial financial suggestion in a little gadgets production line, rather than having few committed electro-mechanical bed-of-nails test units. With the right now accessible innovation, even a low-volume maker can consider a picture-



based examination station. A picture-based investigation framework is likewise ideal for use with the new more modest PCB-based electronic items being made, like mini-computers and wristwatches. The endurance of a reasonable present-day hardware organization can be decidedly influenced by the effective execution of a decent picture-based examination framework.

VIII. CONCLUSION

The utilization of a picture-based review framework can improve the nature of the work performed by auditors in the hardware business. The execution of such a framework must, nonetheless, be done solely after a cautious assessment of the organization's necessities. A cautious plan and possibility study should be made first, considering the benefits and burdens of the different choices. On the off chance that this methodology is utilized, the odds of accomplishment and a sensibly inconvenience-free presentation of the framework can nearly be ensured.

REFERENCES

- [1] Jacobson, D. March 1989.
- [2] Reynders, J. Some challenges facing technology education within the RSA. Elektron, April 1989.
- [3] Dhillon, B. Human responsibility with human factors, Pergamon Press, Toronto, 1986.
- [4] radiotelegraphic signal MCO Optical examination of PCBs. Pulse, August 1985.
- [5] Smith, M. and Cook, S. Techniques of SMD inquisitory. Electronic Engineering, November 1986.
- [6] Connel, N. Human factors in industrial examination, Brief, 1987 No. 2.
- [7] Harris, D. and Chaney, F. Human factors in quality assurance, Wiley, New York, 1969.
- [8] Kane, L. and Behringer, C. Machine vision in Europe, Vision, Vol. 3. No.4, Gregorian calendar month 1986.
- [9] Rettig, C. Machine vision market control back by ametropia, EDN. three September 1987



**Impact Factor:
7.512**



INTERNATIONAL JOURNAL OF INNOVATIVE RESEARCH

IN SCIENCE | ENGINEERING | TECHNOLOGY

 9940 572 462  6381 907 438  ijirset@gmail.com



www.ijirset.com

Scan to save the contact details