



e-ISSN: 2319-8753 | p-ISSN: 2320-6710

# IJRSET

International Journal of Innovative Research in  
**SCIENCE | ENGINEERING | TECHNOLOGY**

# INTERNATIONAL JOURNAL OF INNOVATIVE RESEARCH

IN SCIENCE | ENGINEERING | TECHNOLOGY

Volume 10, Issue 6, June 2021

**ISSN** INTERNATIONAL  
STANDARD  
SERIAL  
NUMBER  
INDIA

**Impact Factor: 7.512**

9940 572 462

6381 907 438

[ijirset@gmail.com](mailto:ijirset@gmail.com)

[www.ijirset.com](http://www.ijirset.com)



# Medical Chat Bot System Using Natural Language Processing

Suryawanshi Rohini Nanasaheb, Shelke Diksha Appasaheb, Chhapani Joshua Rajendra,

Prof. M.A.R. Shabad

Department of Computer Engineering, Sinhgad Academy of Engineering, Pune, India

Department of Computer Engineering, Sinhgad Academy of Engineering, Pune, India

Department of Computer Engineering, Sinhgad Academy of Engineering, Pune, India

Department of Computer Engineering, Sinhgad Academy of Engineering, Pune, India

**ABSTRACT:** the important data on the health related questions and answers on websites can be helpful to patients and doctors. On this site noisy questions/answers demand medical knowledge and answer pairs are extracted and not related or even wrong information filtered. Looked with the huge size of data created on sites and responding to questions of medicine every day, it is impossible to play out this activity with a supervised method due to the extreme budget annotations. In this paper, we projected a system of medical knowledge extraction (MKE) that can spontaneously generate high quality entity extracted from noisy couples of questions and answers and, at the same time, evaluate the experience of the doctors who suggest answers these questions and answers system. The MKE system is based on a framework to discover the truth, which together calculate the reliability of the answers and the physicians experience from the data without supervision. Furthermore, address three one of a kind difficulties for the undertaking of extricating restorative information, ie the portrayal of confusion, different associated certainties and long tail marvel in the information. Both quantitative and contextual investigations exhibit that the proposed MKE framework can give helpful medicinal information and exact therapeutic experience. Likewise, we exhibit an application in real world dataset, ask a specialist, who can consequently offer recommendations to patients about their inquiries.

**KEYWORDS:** trustworthiness degree(TD), Medical Knowledge Extraction(MKE), Crowd sourced Question Answering (CQA).Question answering (QA), Question (Q), and Answer (A)

## I. INTRODUCTION

In modern world, the youth prefer to search their health related problem on various online sources, or ask the doctors through the online platform. The modern system brings new challenges and at the same time new opportunities in medical field to patients, doctors and pharmacy sector. Relating to our old type of face to face services, the new type of health care question, answering (QA) system gives us a platform to communicate openly with number of people at a time, which increases data tremendously. In this system any patients ask question and many doctors give an answer on that question. Then the system checks the truth discovery of that answer using entity extraction. In the previous, valuable information of crowd-sourced QA web-sites how to use in real time is the big question. Therefore we extract knowledge from such information and use it to develop different types of health services. From that knowledge we can construct the robot doctor for answering the new health related questions.

The main challenge of extracting knowledge from the medical crowd-sourced QA system is that the quality of QA sets are not trusted. Hence I create unsupervised taking in strategies that remove information from boisterous publicly supported information on therapeutic QA sites. The important segment in the therapeutic learning extraction errand is to discover dependable suggestion with no supervision. Some current truth revelation strategies expect that the appropriate responses from high-ability clients are dependable, and the clients who give solid answers ought to have high aptitude. In this manner these techniques can iteratively appraise the source unwavering quality (i.e., client aptitude) and surmise solid answers from client contributed information. Along these lines I create unsupervised taking in strategies that separate learning from uproarious publicly supported information on therapeutic QA sites. The important segment in the therapeutic information extraction assignment is to discover dependable A and suggestion with no supervision. Truth disclosure strategies are produced for organized information (e.g., social database), however for publicly supported QA

sites, every one of the sources of info are unstructured information (i.e., writings). We address this test by changing unstructured writings to substance based portrayal.

## II. LITERATURE SURVEY

Related work on CQA and their various technique discussing brief way in this part.

”LNie, T.-S. Chua, at all [1]. Using the novel technique to code the health care records, it jointly utilizes local mining and global learning accesses, which are tightly linked mutually reinforced. For extracting medical and health care concepts from health care records record, local mining attempts to code the individual health care record and then mapping them to authenticated terminologies. Sometimes, local mining access, suffer from data and information loss and lower precision, which are caused by the absence of key health care concepts and the presence of inappropriate medical and health care concepts.

L. Nie, M. Wang, at all [2]. First of all, the user knows the health seekers in relation to their questions, and then for those further analysis, select those who are thinking about possible diseases. And then propose novel deep learning plans to define possible diseases of health seekers' questions. The plan to be suggested consists of two main contents. Initially of all, the world's leading natural ingredients in raw features eat signatures. In the secondly, the raw features and their signatures are the input nodes in one layer and the nodes hidden in the subsequent layer respectively. Learning interrelationships between these two levels through pre-training with pseudo-labeled data.

X. Yin, J. Han, P. S. Yu, at all [3]. A new problem arises which is known as Veracity. Which means conformity to truth, and in it, it's studied that how truth facts are discovered from a big inconsistent data on many parts produced by distinct systems. They generate a basic structure for veracity problems and construct an algorithm "truthfinder", which uses the system and the relation in to their data and information, that means the information is provided if the website is trusted, and be true if a task of the data and information is produced by number of strong systems. A repeating method is used to understand the reliability of the system and the accuracy of each other's information.

X. L. Dong, D. Srivastava at all [4]. A novel access that deal with dependence among data sources in to the truth discovery. All at once, if two data sources produced a large number of probable values and many of these values are rarely produced by other sources, it is very likely that one replica from the other. They apply Bayesian analysis to decide dependence between sources and structure an algorithm that repetitively find dependence and recognize truth from conflicting data.

J. Pasternack, D. Roth at all [5]. In that they find the different algorithm for the prior knowledge as framework. A framework expresses all common "common-sense" logic important cases known to the person as first-order logic construct into tractable linear program. As solution see that, this perspective is also good with big problems that reduce the error and allow a majority to make the user know the truth in relation to truth. In addition, they present three new fact-finding algorithms capable of performing the best for existing fact-finders in our many experiments.

Q. Li, B. Zhao, at all [6]. To combat the dispute number of origin of heterogeneous types of data. They detect the difficulty in use of the optimization structure, where truth and source credentials are defined as two sets of unknown currencies. Purpose attaches to total weighted deviation of truth and multi-source observation where each origin is loaded with its credibility. Distinct frameworks can be incorporated into this framework to identify the features of different types of data and the effective calculation technique have been construct.

Y. Li, J. Han at all [7]. Truth discovery approaches have different assumptions about input data, relationship in to the objects sources and, find out truths, etc. functions in some types of domains also have their rare characteristics that should be consider into account. These challenges the uses for diverse truth discovery method.

D. Wang, H. Le, at all [8]. In that they focus on binary measurements. Optimally, in that cases greatest likelihood evaluation, is attain by solve the expectation greatest query or problem that replay the best answer regarding the truths of each measurement. The access is shown that to outperform the task of the art fact-solving interrogative, as well as simple baselines such as majority voting.



X. Li, W. Meng, X. L. Dong, D. Srivastava, at all [9]. In that the information about Truthfulness, Internet information in to the two field where they concluded information are kind of clean and information grade is essential to users life: Stock and Flight, the huge measure of conflicting information from the different origin and also some origin with much like below correctness. Perform two information group state of the art data fusion technique that ambition at resolving conflicts generating the firstly truth, secondly evaluate their strengths and drawback, give suggestion research orientation.

S. Mukherjee, C. Danescu-Niculescu-Mizil at all[10]. A automated technique innovated the effective of people developed medical and health related statements and the trustworthiness by performing philologist cues and distant guidance and supervision from specialist origin and sources. They produced a feasibility guidance model that jointly learns people statement credibility, trustworthiness and language objectivity. This technique to the part of essence-sing rare or unknown side-effects of health care tablet and being one of the most issue where large scale non-specialist information has the potential to complement specialist health related knowledge.

### III. PROPOSED METHODOLOGY

In the proposed system, a MKE (Medical Knowledge Extraction) system, conduct the MKE and specialist aptitude estimation with no supervision. In medical crowd-sourced QA systems, patients ask questions with some intentions. For example, patients want to ask the disease related to their symptoms and side effects of tablets. Specialist gives answers to these questions those are play the essential part in the QA systems. Many doctors and specialist may provide separate remedies as per their knowledge to same type of questions. The truth discovery method also proposed in proposed system and this method use to automatically generate doctors and specialist expertise level and arrange weighted aggregation depend on the generated doctor and specialist expertise level . For performing the truth discovery method, startlingly take values from various means and convert texts to the entity based structure. In truth discovery method, all output terms of containing knowledge of medical field, diagnosis, questions and trustworthiness and calculate doctor’s level of expertise. In real-time many application are develop using above outputs.

#### A. Architecture

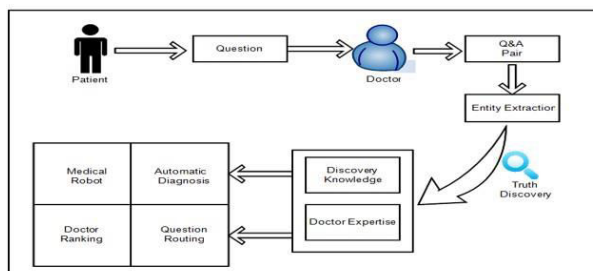


Fig. 1. System Architecture

### V. CONCLUSION

In that, medical crowd-sourced QA systems provide valuable information but noisy health related information. Medical Knowledge Extraction (MKE) system is proposed, to abstract valuable quality of health care inputs i.e knowledge from the QA topic. The M-K-E system can abstract inputs from all QA pairs, expertise knowledge from trustworthy sources without any overseeing. The main tasks in extracting knowledge of medical field is to identify and tackle in MKE system. Identifying the similar questions and merge it accordingly and removing noisy inputs we have used entity based representation. For connection between the responses we have used similarity function concept to the model. And to conduct the long tail phenomenon in the sources, a pseudo count is added which is used to estimate the reasonable medical experience of each doctor. In real-time application, MKE system has great auspicious to advantages more appliance such as artificial doctors or ROBOT.As number of users will increase the system will become more useful.





#### REFERENCES

- [1] L. Nie, Y.-L. Zhao, M. Akbari, J. Shen, and T.-S. Chua, Bridging the vocabulary gap between health seekers and healthcare knowledge, *IEEE Transactions on Knowledge and Data Engineering*, vol. 27, no. 2, pp. 396409, 2015.
- [2] L. Nie, M. Wang, L. Zhang, S. Yan, B. Zhang, and T.-S. Chua, Disease inference from health-related questions via sparse deep learning, *IEEE Transactions on Knowledge and Data Engineering*, vol. 27, no. 8, pp. 21072119, 2015.
- [3] X. Yin, J. Han, and P. S. Yu, Truth discovery with multiple conflicting information providers on the web, in *Proc. of the ACM SIGKDD International Conference on Knowledge Discovery and Data Mining (KDD07)*, 2007, pp. 10481052.
- [4] X. L. Dong, L. Berti-Equille, and D. Srivastava, Integrating conflicting data: The role of source dependence, *The Proceedings of the VLDB Endowment (PVLDB)*, vol. 2, no. 1, pp. 550561, 2009.
- [5] J. Pasternack and D. Roth, Knowing what to believe (when you already know something), in *Proc. of the International Conference on Computational Linguistics (COLING10)*, 2010, pp. 877885.
- [6] Q. Li, Y. Li, J. Gao, B. Zhao, W. Fan, and J. Han, Resolving conflicts in heterogeneous data by truth discovery and source reliability estimation, in *Proc. of the ACM SIGMOD International Conference on Management of Data (SIGMOD14)*, 2014, pp. 11871198.
- [7] Y. Li, J. Gao, C. Meng, Q. Li, L. Su, B. Zhao, W. Fan, and J. Han, A survey on truth discovery, *arXiv preprint arXiv:1505.02463*, 2015.
- [8] D. Wang, L. Kaplan, H. Le, and T. Abdelzaher, On truth discovery in social sensing: A maximum likelihood estimation approach, in *Proc. of the International Conference on Information Processing in Sensor Networks (IPSN12)*, 2012, pp. 233244.
- [9] X. Li, X. L. Dong, K. B. Lyons, W. Meng, and D. Srivastava, Truth finding on the deep web: Is the problem solved? *The Proceedings of the VLDB Endowment (PVLDB)*, vol. 6, no. 2, pp. 97108, 2012.
- [10] S. Mukherjee, G. Weikum, and C. Danescu-Niculescu-Mizil, People on drugs: credibility of user statements in health communities, in *Proc. of the ACM SIGKDD International Conference on Knowledge Discovery and Data Mining (KDD14)*, 2014, pp. 6574.



**INNO**  **SPACE**  
SJIF Scientific Journal Impact Factor

**Impact Factor:  
7.512**

**ISSN** INTERNATIONAL  
STANDARD  
SERIAL  
NUMBER  
**INDIA**



# INTERNATIONAL JOURNAL OF INNOVATIVE RESEARCH

IN SCIENCE | ENGINEERING | TECHNOLOGY

 **9940 572 462**  **6381 907 438**  **ijirset@gmail.com**



[www.ijirset.com](http://www.ijirset.com)

Scan to save the contact details