



e-ISSN: 2319-8753 | p-ISSN: 2320-6710

IJIRSET

International Journal of Innovative Research in
SCIENCE | ENGINEERING | TECHNOLOGY

INTERNATIONAL JOURNAL OF INNOVATIVE RESEARCH

IN SCIENCE | ENGINEERING | TECHNOLOGY

Volume 10, Issue 6, June 2021

ISSN INTERNATIONAL
STANDARD
SERIAL
NUMBER
INDIA

Impact Factor: 7.512

9940 572 462

6381 907 438

ijirset@gmail.com

www.ijirset.com

Implementation of Brain Tumor Detection Using Machine Learning Approach

Himanshu Mehta¹, Sachin Nayak², Nipun Bansode³, Suyog Gadiya⁴, Kanchan Jadhav⁵

U.G. Student, Department of Computer Engineering, Sinhgad Academy of Engineering, Pune, India¹

U.G. Student, Department of Computer Engineering, Sinhgad Academy of Engineering, Pune, India²

U.G. Student, Department of Computer Engineering, Sinhgad Academy of Engineering, Pune, India³

U.G. Student, Department of Computer Engineering, Sinhgad Academy of Engineering, Pune, India⁴

Assistant Professor, Department of Computer Engineering, Sinhgad Academy of Engineering, Pune, India⁵

ABSTRACT: Sometimes a brain tumor fails to be diagnosed by a doctor. With proper use the precise data mining process can predict early any disease can be achieved. in the medical field the process of machine learning and data mining has held a remarkable stance. to achieve this direct or indirect method is required. research proposes the automatic partition method you rely on, determines the 3 * 3 kernel. by installing this one method, partitioning and partitioning is achieved. CNN comes from a neural network where it has a background based on classification of results. various levels involved in the proposed method of data collection 1. data processing 3. centralized analysis using the data mining process key relationships and pattern from the data can be extracted.

KEYWORDS: brain tumor, preprocessing, segmentation, feature extraction.

INTRODUCTION

The tumor basically represents the abnormal growth and regulation of cells in the body. Brain tumor indicates abnormal tissue mass in which cells suddenly and completely replicate within the brain tissue (1) Brain tumor involves the differentiation of distinct tumor cells (active, solid, edema, necrosis) from normal brain cells (GM - gray matter), WM - white matter, and CSF - cerebrospinal fluid). With respect to brain tumor research, abnormal cells are usually tested at any time [2]. The MRI procedure does not involve any pain or radiation and is a non-invasive brain imaging process [3]. Early diagnosis and prompt treatment of brain tumor increases a person's chances of survival. Using DM techniques a lot of data can be analyzed from different angles thus extracting important information. The research focuses on building a diagnostic and predictive system related to the brain tumor by introducing forecasting mines.

A brain tumor can be associated with many cardiovascular conditions. These unusual health / medical symptoms have a direct impact on the brain. Currently, a brain tumor is considered a health problem. The study examines a list of risk factors in brain tumor screening programs. And the proposed method ensures that it is very effective and accurate in detecting brain tumor, isolation and segregation. For these reasons, accurate semi-automatic or automatic methods are required. To achieve this it is necessary for the default or default methods. The study proposes an automatic split-based method based on CNN (Convolution Neural Networks), which determines 3 x 3 small letters. CNN (ML process) from NN (Neural Networks) where it has a background based on classification of results.

The study proposes a novel process to detect the tumor on the basis of high-quality features released on CNN using the Hough change process. The recovered tissue, is divided using a set of FC layers (fully connected), after which, a separate mask is divided into FCs. The proposed method produces convincing results in terms of standard measurements of medical imaging. CNN (Convolutional Neural Network) or ConvNet is an in-depth machine learning algorithm adopted for image analysis. It uses a variety of multilayer framed ideas to get a reduced pre-processing time. The processes involved in the proposed method are: Data collection, pre-processing of deleted noisy data, and then intermediate filtering that produces and identifies a clear image and then the separation process is applied to pixel separation in relation to brain image and other affected areas.



Data mining is successfully used for the detection and prevention of brain tumors at an early age. The following shows the classification of the magazine. The work of previous authors is illustrated in Section 2. Section 3 describes the proposed mechanical learning (ML) method for detecting the brain tumor and features of various levels. Section 4 presents the result and discussion. Finally, Section 5 contains the conclusion and proposed activity for future research.

II. RELATED ACTIVITY

2. Related Work

Hemasundara Rao et.al, suggests an automatic way to detect and differentiate parts that affect plant areas in the brain. There are three stages to this proposed approach: 1. initial classification 2. Modelling of energy activities and 3. Improving energy performance. To achieve reliable separation, the data available on T1 images and FLAIR MRI are used. A CRF-based framework (with random conditions) has been used to integrate the data available on T1 and FLAIR in the high-risk region

[4]. Atiq Islam et.al recommends the use of a new MultiFD (multi-fractal) feature and advanced AdaBoost systems for brain detection and differentiation. Using the MultiFD feature removal strategy, the brain tissue is extracted. Advanced methods for the AdaBoost phases were adopted to determine whether brain tissue was affected by the tumor or not. The scheme shows high difficulty

[5]. Meiyuan Huang et.al introduced using the LIPC (independent-based separation method) to differentiate brain voxel. And using this method, the Path feature is removed. Obvious adjustments need not be made to LIPC. Low accuracy is found

[6]. Bjoern H. Menze et.al, introduced a new brain tumor classification also known as the multi-brain segregation system. Various partition algorithm is integrated to get better performance unlike the existing method. However, it shows a high degree of difficulty

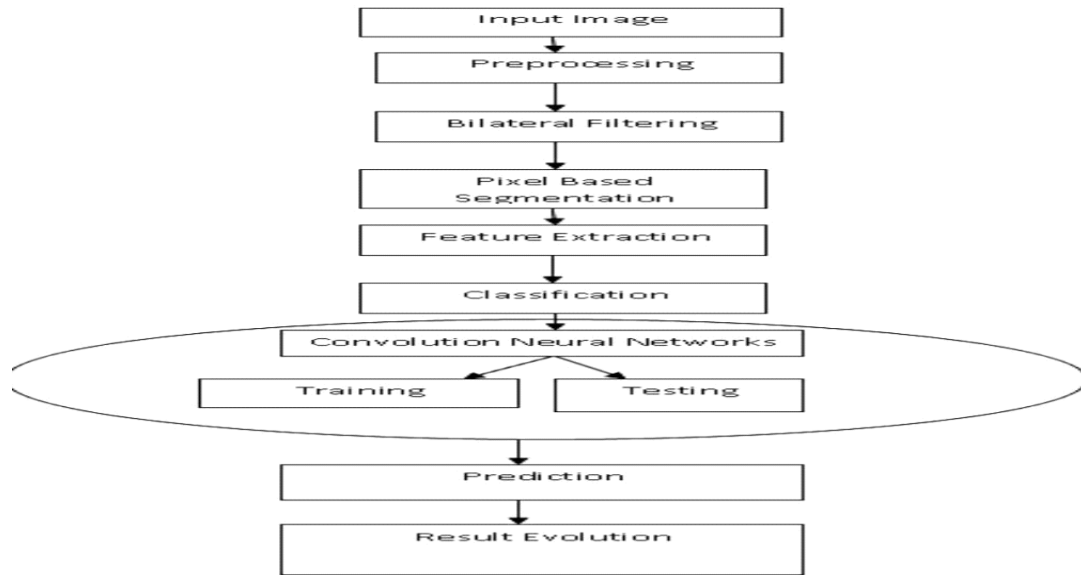
[7]. Shamsul Huda et.al introduced a hybrid feature selection using a combination of findings to obtain a brain tumor diagnosis. By obtaining the rules of decision, the decision of the Tree, GANNIGMAC, Bagging C based wrapper method was adopted and the rules of decision were simplified by selecting the hybrid compact element (Tree Decision + MRMRC + GANNIGMAC + Bagging C)

[8]. Sergio Pereira et.al introduced automated brain tumors that identify and type catalog using brain MRI images from the first time a person could attempt to scan and transport medical images to a computer system. In contrast, NN (Neural Networks) and SVM (Support Vector Machine) are the most widely accepted methods recently as they offer better performance



III. METHODOLOGY

3.1 Project Outline -



3.2 Brain Image Processing -

Due to existing noise disturbances MR images are affected. Noise reduction The research function suggests smooth local and non-local methods. In the illustration there may be a few important structures and details that can act as sound; such details are also deleted. Image pre-processing process includes: data purification, data conversion, data compilation, data retrieval, data reduction etc.

Preliminary processing removes unnecessary data and aggravates noisy data, detects and eliminates external and corrects data inconsistencies. Finally, standardization and integration is done. The process of image processing proves that it is very important in determining the image of a particular heart, removing the sound and improving the image quality.

3.3 Average Filtering - A standard channel is a convolution function used to set audio in images. The pre-processing step leaves a distraction in the image but still after applying the image editing it is not ready for the future process. As a result the central channel solves this problem by providing an acceptable and smooth image. The Central Channel is like an online channel in contrast to the direct channels. The central channel replaces the pixels with an average value that is almost accessible (e.g., 3x3 or 5x5 or pixels near the focus pixel value). In addition, the Central Channel tends to protect the edges. It helps to get rid of the badness of salt and pepper.

Algorithm: Step 1: image is provided as input. Step 2: select a 3X3 window next to the pixel with an image. Step 3: Perform pixel filtering to enlarge application and save it to vector. Step 4: determine the vector standard. Step 5: The current pixel is replaced by normal esteem. Step 6: Repeat steps 2 to 5 until all the pixels inside the image are adjusted. Step 7: Output.

3.4 Pixel-based segmentation -

Photo segmentation is the standard method for digital image processing. Recently, a picture of a brain tumor section in MRI recommended as a popular study in the background of the medical imaging program. The process of separation.

3.5 Convolutional Neural Networks Convolutional Neural Network –

CNN was used to classify images. It directly removes features from pixel images with minimal performance before getting involved. The network used is Link Net which is a deep neural network building method designed to achieve basic segmentation. Link Net Network consists of encoder and decoder blocks that basically control to separate the image and rebuild it before it can be transferred through the last few layers of resolution. CNN is an important form of in-depth learning used in image recognition systems. It incorporates two basic methods of conversion and integration. Transformation and integration layers are structured to achieve the highest level of accuracy in stages. In addition, there are a few maps included throughout the convolutional layer and the weights connected to the convolutional node (on the same map) are shared. Such configurations provide insight into various network features while simultaneously maintaining the no: downloadable parameters. CNN has unspecified functions unlike conventional methods and helps to completely extract features. Figure 2, shows the CNN process plan as.

CNN-based Segmentation Algorithm -

Step 1: The convolution filter is applied in the first layer.

Step 2: Filter sensitivity is reduced by smooth convolution filter under sample.

Step 3: The opening layer controls the signal transfer from one layer to another layer.

Step 4: The training time is done immediately by use RELU (modified line unit).

Step 5: Neurons in the pathway continue to be related With each neuron is in the next layer.

Step 6: during training, the loss layer is applied there end to provide feedback to NN (neural network).

CNN Classification -Step 1 algorithm: convolution filter is applied in the first layer. Step 2: Filter sensitivity is reduced by smoothing the convolution filter under the sample. Step 3: The activation layer controls the transfer of signal from one layer to another layer. Step 4: The training time is used using RELU (fixed line unit). Step 5: Neurons in the pathway coincide with the with each neuron in the next layer. Step 6: during training, the loss layer is finally placed to provide a response to the NN (neural network).

3.6 Change Metrics -To assess the effectiveness and robustness of a system, a few values are calculated and evaluated. These are as follows: CNN's proposed performance was assessed by RMSE (Root Mean Square error), memory, sensitivity, accuracy, F score points, PME (probability error) and the accuracy of the training and assessment set and for all work was assessed using Eqs. (1-8) similarly, when real Yide notes and Ri mean the result of a tumor-induced tumor diagnosis, TN (True Negative) refers to the prediction of patients who do not have a brain tumor and are found to have no brain tumor, FN (False Negative) Predicts patients who have brain tumors but have been diagnosed with a brain tumor, TP (True Positive) means prediction of patients with brain tumor and brain tumor, while FP (False Positive) represents prediction of patients with brain tumor but found to have no brain tumor.

True Positive (TP): If the sample is positive and classified as positive

➤False Negative (FN): If the sample is positive but classified as negative

False Negative (TN): If the sample is negative and classified as negative

➤False Positive (FP): If this example is negative but classified as direct

IV. IMPLEMENTATION

1. The first step is to import all the necessary additional libraries such as keras, numpy, opencv, tensorflow, etc.
2. Next, the user selects an MRI image from the system.
3. During preprocessing of the MRI image is converted into grey scale and further converted to threshold since the computer only understands binary.

4. After preprocessing image segmentation is used to locate objects and boundaries (lines, curves, etc.) in MRI.
5. Lastly the CNN is used to detect and classify the tumor if present.

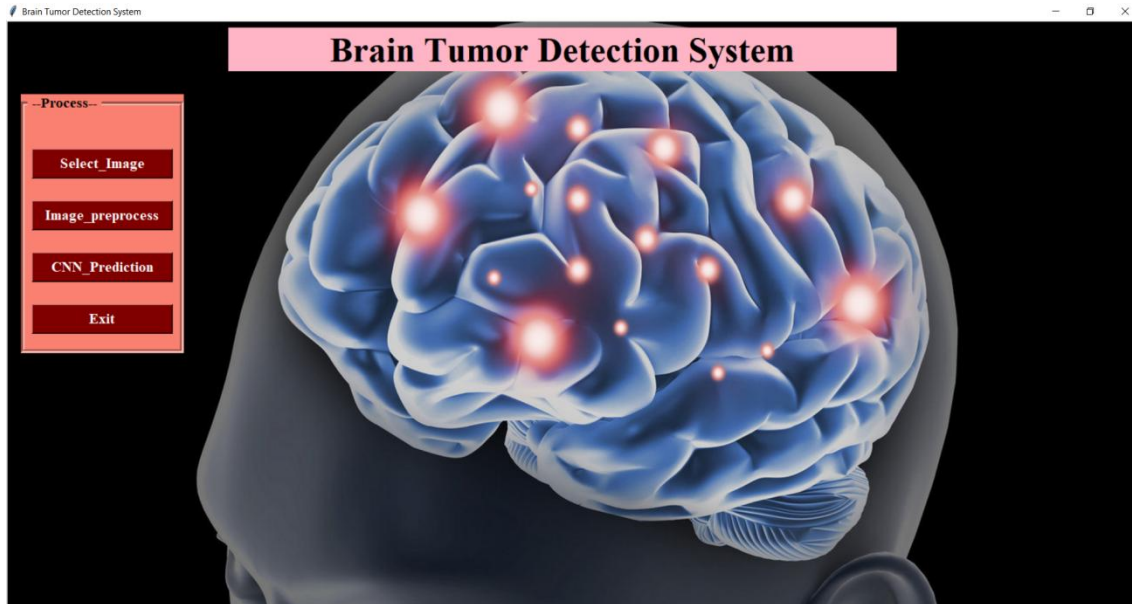


Figure 1: Brain Tumor Detection System UI

V. CONCLUSION

To detect brain tumor detection there exist different classical approaches but the present work utilizes the traditional neural network approach for detecting brain tumor, since the brain tumor detection images relies upon the Neighborhood pixels. The CNN approach provides powerful brain tumor detection. The proposed algorithm is implemented on multiple images and the output retrieved is best and effective.

Accuracy achieved at the end relies upon processing of every step. There are lot of exiting methods for every step, hence the methods that offer better results are selected. At the last, brain tumor classification takes place.

REFERENCES

- [1] Ali Isina, Cem Direkoglu, Melike Sah, " Review of MRI-based brain brain segmentation using deep learning methods ", Procedia Computer Science 102 (2016) 317 - 324.
- [2] Nelly Gordillo, Eduard Montseny, Pilar Sobrevilla, "State of the art survey on MRI brain segmentation", Magnetic Resonance Imaging 31 (2013) 1426-1438.
- [3] Ayuni Fateeba Muda, Norbasimah MobdSaad, SAR Abu Bakar, Sobri Muda and Abdullab AR, "Brain Lesion Segmentation Using Fuzzy C-Means on Diffusion-Weighted Imaging, ARP Journal of Engineering and Applied Sciences, Vol. 10, NO. 3, February 2015 ISS 1819-6608.
- [4] C. Hemasundara Rao, Dr. P.V. Naganjaneyulu, Dr. K. Satya Prasad "Detection of a brain tumor and classification using a randomized field of condition", © IEEE 7th International Advance Computing Conference, 2017, p.p. 807-810.
- [5] Atiq Islam et al, "Multi-fractal Texture Estimation for Detection and Segmentation of Brain Tumors", IEEE, (2013).
- [6] Meiyuan Huang et al, "Tissue Separation Technology Based on Independent Spatial Separation", IEEE Transaction on Biomedical Engineering, IEEE, (2013).
- [6] Bjoern H. Menze et al, "The Multimodal Brain Tumor Image Segmentation Benchmark (BRATS)", IEEE Transaction on Medical Imaging, (2014).



INNO  **SPACE**
SJIF Scientific Journal Impact Factor

**Impact Factor:
7.512**

ISSN INTERNATIONAL
STANDARD
SERIAL
NUMBER
INDIA



INTERNATIONAL JOURNAL OF INNOVATIVE RESEARCH

IN SCIENCE | ENGINEERING | TECHNOLOGY

 **9940 572 462**  **6381 907 438**  **ijirset@gmail.com**



www.ijirset.com

Scan to save the contact details