



e-ISSN: 2319-8753 | p-ISSN: 2320-6710

# IJRSET

International Journal of Innovative Research in  
**SCIENCE | ENGINEERING | TECHNOLOGY**

# INTERNATIONAL JOURNAL OF INNOVATIVE RESEARCH

IN SCIENCE | ENGINEERING | TECHNOLOGY

Volume 10, Issue 6, June 2021

**ISSN** INTERNATIONAL  
STANDARD  
SERIAL  
NUMBER  
INDIA

**Impact Factor: 7.512**

9940 572 462

6381 907 438

[ijirset@gmail.com](mailto:ijirset@gmail.com)

[www.ijirset.com](http://www.ijirset.com)



# Face Mask and Temperature Detection

Shubham Bhosle<sup>1</sup>, Pranita Giridhar<sup>2</sup>, Shweta Burge<sup>3</sup>, Surabhi Dome<sup>4</sup>, Sheetal Bhagwat<sup>5</sup>

Department of Computer Engineering, JSPM'S Bhivarabai Sawant Institute of Technology and Research Wagholi,  
Pune, India

**ABSTRACT:** Covid19 has given a new identity for wearing a mask and temperature. It is meaningful when these masked faces are detected accurately and efficiently. Intelligent face recognition machine with temperature measurement can help to filter abnormal body temperature manpower and also can restrict students without face mask in covid19 scenario. As a unique face detection task, face mask detection is much more difficult because of extreme occlusions which leads to the loss of face details. Besides, there is almost no existing large-scale accurately labelled masked face dataset, which increases the difficulty of face mask and temperature detection. The system encourages to use CNN-based deep learning algorithms which has done vast progress towards researches in face detection. In this paper, we propose a novel CNN-based method which is formed of three convolutional neural networks to detect face mask. Besides, because of the shortage of face masked training samples, we propose a new dataset called "face mask dataset" to fine-tune our CNN models. We evaluate our proposed face mask detection algorithm on the face mask testing set, and it achieves satisfactory performance. In response to the ongoing COVID-19 pandemic, we present a robust deep learning pipeline that is capable of identifying correct and incorrect mask-wearing from real-time video streams.

**KEYWORDS:** Face mask, CNN, Face detection, deep learning, Temperature Detection

## I. INTRODUCTION

At the end of this decade, face has got a new identification due to rise in COVID-19 cases. COVID-19 is a virus which gets inflicted when infected person comes in contact with any other person. Infected person can leave traces of virus on things around him. His spit or touch is observed to be most infectious medium to carry this virus. Hence as a way of precaution people all around need to wear face mask to prevent them and everyone around them to get infected by the VIRUS. This discipline has been made compulsory which is helping in curbing the COVID-19 cases. Government have utilized strict law for wearing mask when in public area. People are fined for not wearing mask or not wearing it properly. Keeping the need of time in mind we have proposed a method for detecting the mask on face. The paper proposes a step wise method to detect the block of face in images and surveillance videos. The next step involves detection of mask on this block. Further steps involve whether the mask is worn properly or not. The first step of face detection is one of the longest-researched computer vision problem, which can be traced back about half a century ago. However, most of the early face detection algorithms cannot meet the practical need. The Viola Jones as a first researcher for face detection has face detector that consists of a series of classifiers ranging from simple to complex ones. Later researchers continued to study based on it, and many of them apply more complex and descriptive features to make the detector more powerful. In recent years, deep learning has made great breakthroughs in many computer vision areas, such as general object detection, object classification, object segmentation and of course, face detection. Deep learning does not need to manually design features, as the CNN (Convolutional Neural Networks) can automatically take learning useful features from the training images. The proposed system involves use of CNN for face detection and detection of mask at later stage with K-means. The system will help detect the people wearing mask as well people not wearing mask or people who have not worn mask properly. This in course will help to bring discipline to public as well precaution through which they can easily roam around with mask in public place and help curb the COVID-19 infection. In this project, we are going to implement the real-time applications which require face-mask and temperature detection for safety purposes due to the outbreak of Covid-19. This project can be integrated with embedded systems for application in airports, railway stations, offices, schools, and public places to ensure that public safety guidelines are followed.

## II. LITERATURE REVIEW

### A. Multi-scale feature extraction for single face recognition

The Single sample face recognition has always been a hot but difficult issue in face recognition. By considering selecting robust features and generating virtual samples simultaneously, the paper proposes a multi-scale support vector transformation (MSSVT) based method to generate multi-scale virtual samples for single image recognition. The methods to solve problem are divided into two categories. One is to look for and select features that are robust to the number of samples, from the point of view of feature selection, such as PCA and 2DPCA. But when each person has only one face to be trained, the feature information extracted from the feature extraction algorithm will also be very limited, resulting in a bad recognition performance. The other is to generate multiple virtual samples from the point of view of the extended sample, thus reducing the impact of the sample size.[3]

### B. Face recognition method based on sparse representation and feature fusion

This The authors propose a multi-feature fusion face recognition method based on sparse representation. The core idea is to find the sparseness through training, and then use the sparse coefficient and training samples to represent the test samples, and then the optimal sparse solution is obtained by solving the  $l_1$ -norm problem. The recognition results of feature fusion method are better than any single feature algorithm under the condition of non-occlusion or occlusion. When there are less than 10 pictures of each category of people in the training sample and the occlusion type is not controllable, our algorithm can still obtain a high recognition rate. [5]

### C. Spatial pyramid pooling in deep convolutional networks for visual recognition

For Visual Recognition, Scales, Sizes and Aspect Ratio are considered as important factor. SPP (Spatial Pyramid Pooling) is a flexible solution for handling these factors. In context of deep networks, these factors have received less consideration, thus the system is trained with deep layer networks considering SPP layer. SPP-net shows outstanding accuracy in classification/detection tasks and greatly accelerates DNN-based detection. Their studies also show that many time-proven techniques/insights in computer vision can still play important roles in deep-networks-based recognition.[1]

### D. Face and Gender Recognition System Based on Convolutional Neural networks

The proposed Face and Gender Recognition System realizes the combination of image face recognition and gender recognition module, which enables not only face recognition but also gender recognition in complex background. Based on the ResNet50 neural networks, we use the global average pool (GAP) instead of the fully connected layer before final output, followed by the softmax layer, which reduced the size of the networks. By constructing such a simple structure, the accuracy of the system recognition has been improved.[6]

### E. Dynamic Feature Matching on Partial Face Recognition

In The partial face recognition is having application in a broad spectrum of different fields. The different approaches used for the partial face recognition are the key point-based approach, region-based approach, and CNN-based approach. In key point-based, the popular method was MKD-SRC. In region-based partial face recognition approach, the prominent model is MR-CNN. In the midst of different approaches in partial face recognition, it is concluded that the CNN-based approaches are the comparatively best approach. The current novel approach proposed for partial face recognition. in CNN- based is called Dynamic Feature Matching (DFM). The dynamic feature dictionary correlating to the probe is achieved. DFM is able to yield the advantages of the properties of FCN and generate identifying features more precisely. DFM is having a promising application in various video recognition approaches in the future. [2]

### F. Implementation of Principal Component Analysis on Masked and Non-masked Face Recognition

The paper analyses non-masked face recognition and masked face recognition accuracy using Principal Component Analysis (PCA) to recognize a person. It proved that, a face without mask gives better recognition rate in PCA based face recognition system. But when a person is wearing mask, facial recognition gives poor recognition rate. It is found that extracting feature from a masked face is less than non-masked face. Because of missing features for wearing mask which decrease the recognition rate. Finally, it is concluded that traditional statistical algorithm Principal Component Analysis (PCA) is better for normal face recognition but not for masked face recognition. So, in the future, concern to improve the accuracy of masked face recognition using other sophisticated machine learning methods.[7]



**G. Implementation of Principal Component Analysis on Masked and Non-masked Face Recognition**

The paper analyses non-masked face recognition and masked face recognition accuracy using Principal Component Analysis (PCA) to recognize a person. It proved that, a face without mask gives better recognition rate in PCA based face recognition system. But when a person is wearing mask, facial recognition gives poor recognition rate. It is found that extracting feature from a masked face is less than non-masked face. Because of missing features for wearing mask which decrease the recognition rate. Finally, it is concluded that traditional statistical algorithm Principal Component Analysis (PCA) is better for normal face recognition but not for masked face recognition. So in the future, concern to improve the accuracy of masked face recognition using other sophisticated machine learning methods.[8]

**III. EXISTING SYSTEM**

The very earlier systems designed have taken statistical methods for facial recognition. Later system surveyed has used feature extraction as a technique for facial recognition. In papers such as [3] and [5], multiple feature extraction is used with sparse representation. The papers [1] [6] make use of CNN as a latest framework for facial recognition. We put forth study CNN as a basic framework which will be used in proposed system.

The traditional neural network is not capable of dealing with images. Consider in case of the regular network, imagine each pixel is connected to one neuron and there will be thousands of neurons which will be computationally expensive. Convolutional Neural Network (CNN) handles images in different ways, but still, it follows the general concept of Neural Network. In constructing the CNN, it mainly consists of three parts – Convolution, Pooling, Flattening. The fundamental purpose of convolution is to select characteristics from the input image. It conserves the spatial relationship between pixels by learning image characteristics using small squares of input data. The output obtained is a matrix known as the feature map. A further operation called ReLU is used after every convolution operation. The next step is of Pooling which is also known as sub-sampling or down-sampling. Pooling reduces the length of each feature map but maintains the most important information. In Max Pooling, it defines a spatial neighbourhood and takes the biggest element from the rectified feature map within that window. The other method is to take the average of all elements in that window. After pooling, next stage comes is flattening. In this step, the matrix is converted into a linear array so that to input it into the nodes of the neural network. The full connection is connecting a convolutional network to a neural network and then compiling network. The usage of CNN helps in minimizing the number of parameters needed for images. It also helps to do the parameter sharing as it can possess translation invariance.

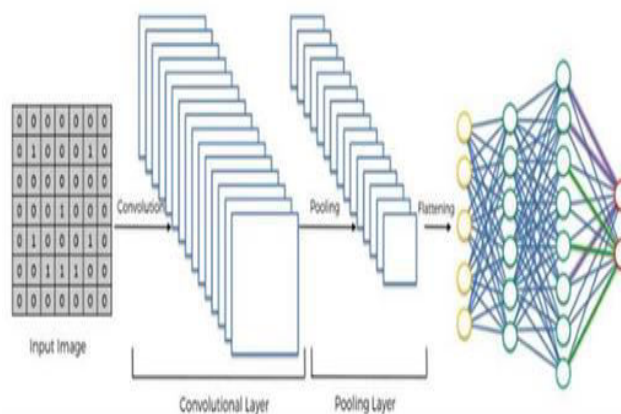


Fig 1: CNN (Source: Medium)

COVID-19 situation has given rise to determination of face wearing mask. The Papers [2][7][8] let us study the partial or masked face recognition with use of CNN.

**IV. PROPOSED SYSTEM**

Our proposed IoT-based has multiple features. The most prominent part of SSDWG measures the temperature of the human body in real-time in a contact-free manner. Temperature measuring sensor MLX90614 is used in our proposed

SSDWG . It is a non-contact wireless infrared thermometer that is used for human body temperature measurement, and its micro-controller is capable of wireless communications. We proposed contact-free temperature checking mechanisms because it is not violating the social distance SOP's. An image processing module is used to capture a suspected photo whose body temperature is not average. In our proposed model, we placed our temperature measure sensor and image capturing module on the front side of SSDWG. Whenever any person wants to pass from SSDWG, he/she must stand in front of the temperature sensor for 3 s; the temperature sensor detects the human body temperature and contact-free sensor.

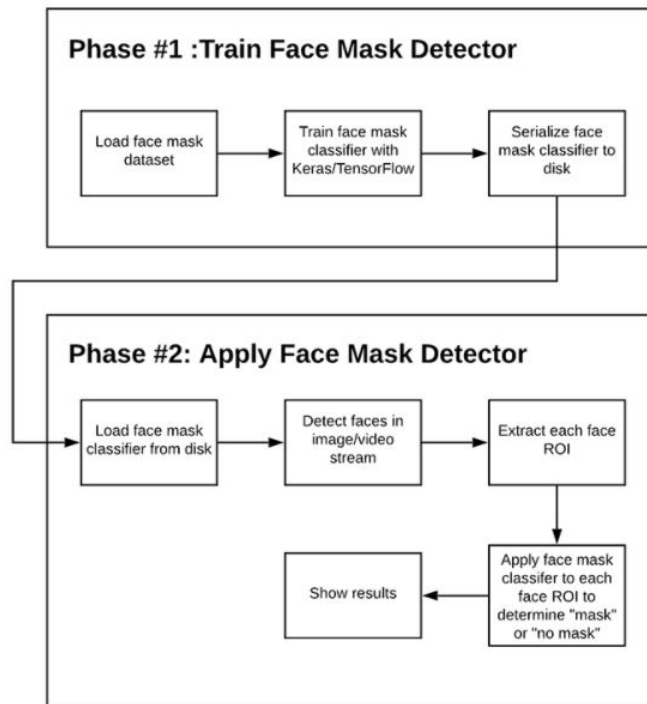


Fig. 2: System Flowchart

### V. RESULTS

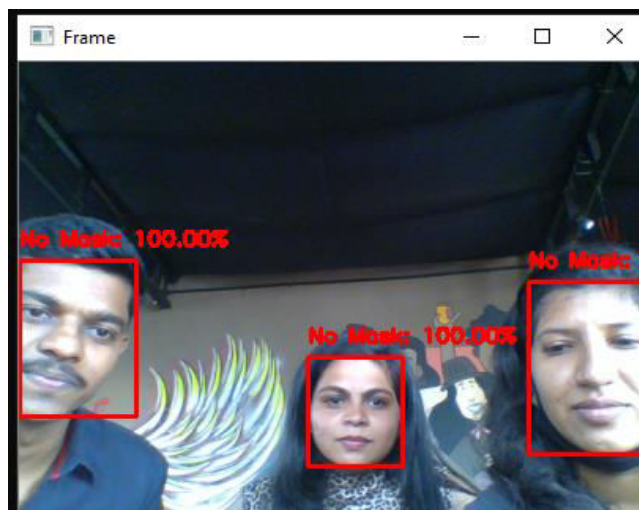


Fig 3:Result without Mask

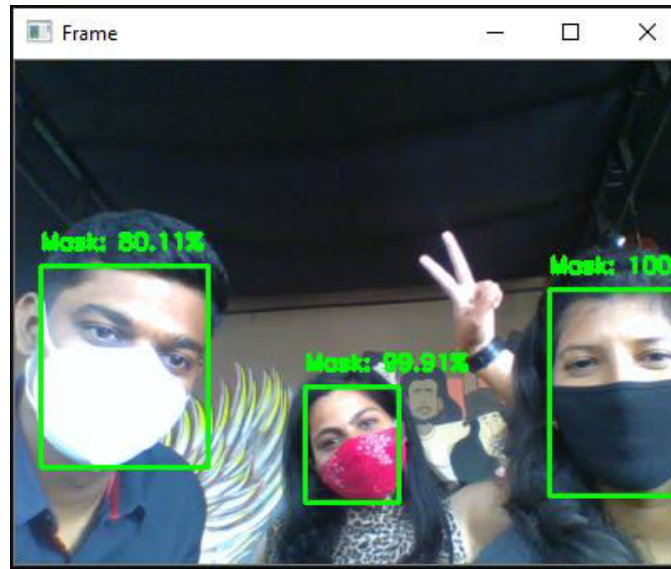


Fig 4: Result with Mask

## VI. CONCLUSION

An integrated platform combining multiple sensors for the simultaneous non-contact measurement of relative humidity, ambient temperature, and body temperature has been presented in this work. The operating principle and the full hardware design has been accurately described. Numerical simulations, reporting the curves for the three assumed variable parameters are shown and discussed to provide evidence of the nominal design. Experimental validations have also been provided to demonstrate the improved accuracy of infrared temperature measurements achieved with the proposed approach. This is particularly useful for detecting fevers and therefore possible infections of COVID-19 and other illnesses.

## REFERENCES

- [1] Kaiming He, Xiangyu Zhang, Shaoqing Ren, and Jian Sun. Spatial pyramid pooling in deep convolutional networks for visual recognition. In European Conference on Computer Vision, pages 346–361. Springer, 2014
- [2] Wei Bu, Jiangjian Xiao, Chuanhong Zhou, Minmin Yang, Chengbin Peng A Cascade Framework for Masked Face Detection, IEEE 8th International Conference on CIS & RAM, Ningbo, China, 2017.
- [3] X. Xu, L. Zhang and F. Li, "MSSVT: Multi-scale feature extraction for single face recognition," 2018 24th International Conference on Pattern Recognition (ICPR), Beijing, 2018, pp. 1996-2001, doi: 10.1109/ICPR.2018.8545343.
- [4] Lun Zhang, Rufeng Chu, Shiming Xiang, Shengcai Liao, and Stan Z Li. Face detection based on multi-block lbp representation. In International Conference on Biometrics, pages 11–18. Springer, 2007. NaliniPriya G, Priyadarshani P, RajaRajeshwari K, IEEE 6th International Conference on smart structures and systems ICSSS 2019.
- [5] C. Jiang, M. Wang, X. Tang and R. Mao, "Face recognition method based on sparse representation and feature fusion," 2019 Chinese Automation Congress (CAC), Hangzhou, China, 2019, pp. 396-400, doi: 10.1109/CAC48633.2019.8997456.
- [6] Y. Zhou, H. Ni, F. Ren and X. Kang, "Face and Gender Recognition System Based on Convolutional Neural networks," 2019 IEEE International Conference on Mechatronics and Automation (ICMA), Tianjin, China, 2019, pp. 1091-1095, doi: 10.1109/ICMA.2019.8816192.
- [7] M. R. Reshma and B. Kannan, "Approaches on Partial Face Recognition: A Literature Review," 2019 3rd International Conference on Trends in Electronics and Informatics (ICOEI), Tirunelveli, India, 2019, pp. 538-544, doi: 10.1109/ICOEI.2019.8862783.
- [8] M. S. Ejaz, M. R. Islam, M. Sifatullah and A. Sarker, "Implementation of Principal Component Analysis on Masked and Non-masked Face Recognition," 2019 1st International Conference on Advances in Science,



Engineering and Robotics Technology (ICASERT), Dhaka, Bangladesh, 2019, pp. 1-5, doi: 10.1109/ICASERT.2019.8934543.''

- [9] E. Winarno, I. Husni Al Amin, H. Februariyanti, P. W. Adi, W. Hadikurniawati and M. T. Anwar, "Attendance System Based on Face Recognition System Using CNN-PCA Method and Real-time Camera," 2019 International Seminar on Research of Information Technology and Intelligent Systems (ISRITI), Yogyakarta, Indonesia, 2019, pp. 301-304, doi: 10.1109/ISRITI48646.2019.9034596.
- [10] S. Sawhney, K. Kacker, S. Jain, S. N. Singh and R. Garg, "Real-Time Smart Attendance System using Face Recognition Techniques," 2019 9th International Conference on Cloud Computing, Data Science & Engineering (Confluence), Noida, India, 2019, pp. 522-525, doi: 10.1109/CONFLUENCE.2019.8776934.
- [11] W. Zeng, Q. Meng and R. Li, "Design of Intelligent Classroom Attendance System Based on Face Recognition," 2019 IEEE 3rd Information Technology, Networking, Electronic and Automation Control Conference (ITNEC), Chengdu, China, 2019, pp. 611-615, doi: 10.1109/ITNEC.2019.8729496..



**INNO**  **SPACE**  
SJIF Scientific Journal Impact Factor

**Impact Factor:**  
**7.512**

**ISSN** INTERNATIONAL  
STANDARD  
SERIAL  
NUMBER  
**INDIA**



# INTERNATIONAL JOURNAL OF INNOVATIVE RESEARCH

IN SCIENCE | ENGINEERING | TECHNOLOGY

 **9940 572 462**  **6381 907 438**  **ijirset@gmail.com**



[www.ijirset.com](http://www.ijirset.com)

Scan to save the contact details