



e-ISSN: 2319-8753 | p-ISSN: 2320-6710

# IJIRSET

International Journal of Innovative Research in  
**SCIENCE | ENGINEERING | TECHNOLOGY**

# INTERNATIONAL JOURNAL OF INNOVATIVE RESEARCH

IN SCIENCE | ENGINEERING | TECHNOLOGY

Volume 10, Issue 6, June 2021

**ISSN** INTERNATIONAL  
STANDARD  
SERIAL  
NUMBER  
INDIA

**Impact Factor: 7.512**

9940 572 462

6381 907 438

[ijirset@gmail.com](mailto:ijirset@gmail.com)

[www.ijirset.com](http://www.ijirset.com)



# Survey towards Automatic Fruit Recognition Using Deep Learning

**Ms. Bhand Rutuja, Ms. Avhad Arati, Ms. Bagal Priti, Ms. Kakad Bharti, Prof. R . L . Paikrao**

Department of Computer Engineering, Amrutvahini College of Engineering, Sangamner, Ahmednagar,  
Maharashtra India

**ABSTRACT:** Classification of assorted fruits has been thought of one among the essential space for the researchers and it conjointly the economic application. Some of the vital encounters in classification of fruits on deep learning with texture, color form and likeness between the fruits etc. From past decade's computer vision has been enhanced heap of attention towards the researchers because it is capable of quick, end-to-end learning framework, ascendable and also the convolution neural network (CNN) and due to the influence of deep learning it helps to get more accuracy. Nowadays, the most important concern is that the standard and safety of the fruits because the recent technologies are progressed within the field of automation and intelligent systems that is capable of handling the complete process of the fruits systems. As a result of the data's getable are within the type of pictures and videos, extracting info from such reasonably information are most difficult task. Also the demand is increasing for masterly employees, price of the labors and thus most of the fruit industries depends on such reasonably real time process tools for classification of the fruits .

**KEYWORDS:** Fruit Recognition, Image Processing, Deep Learning, Fruit Disease etc.

## I. INTRODUCTION

One of the most important economic sectors is agriculture and it plays the vital role in economic process of India. Still in India, the normal examination of fruits is performed by human specialist. An oversized quantity of your time and cash is wasted within the fields for checking the freshness of the fruits by humans. we are analyzing a safe and economic way to identify the fruit based on size, shape and color and also detect the disease using different algorithms. Testing of fruits ought to be drained a non-damaging ways as a result of these are terribly fragile things. If the identification and disease detection is completed through manual ways, the method are going to be slow and generally it'll be choked with errors. The humans determine fruits supported color, size, etc. If these quality measures are mapped into machine-driven system by exploitation appropriate programming language then the work are going to be quicker and while not errors. This ends up in increasing speed and decreasing value in fruit sorting method. Recently, deep learning techniques are found more and more helpful within the fruit industries, primarily for the applications in fruit identification and sickness detection. Fruit characteristics like form and color are crucial for perceptible examination. A consistently freelance structure for fruit grading supported disease detection should be able to expeditiously determine each the parameters. we will simply get the form of the fruits from their digital image. However, color recognition involves tons of psychological and physical ideas, creating it troublesome to accurately model and method colorize that image. There are many alternative grades of color systems that are gift for the sorting of fruits supported colours. during this organization supported their color, software package development is incredibly necessary. the entire structure is intended over neural network construct to examine the colour, size and form of the fruit. the foremost necessary think about fruit classification is it's color, however several fruits have similar color, then their size based categorization involves extraction of the required information from the fruit by physical observation of the surface and sorting it to the several grade.

## II. LITERATURE SURVEY

### **A Research on the Fruit Recognition Algorithm supported the Multi-Feature Fusion**

This paper proposes a fruit recognition formula supported color features and shape features . Firstly, the fruit image is preprocessed to induce the target of the image. Then, the HSV color model is chosen to analysis its bar chart and extract its color options. After this, the contour technique is used to extract the shape options of the fruit. Finally, the victor of color options and one in every of form options square measure optimized and combined, and thus the BP neural network is used to teach and classify the check samples. when testing, comparison and analyzing the varied

options of the input layer severally, the analysis result shows that the classification and recognition rate of this formula is higher than 95%, that is higher than that of the sole feature formula. Fruit Recognition and Grade of Disease Detection using Inception V3 Model

This work focuses on developing a easy tool that acknowledges the extent of the level of the disease and grades them accordingly. Inception model uses convolutional neural networks for the classification, that is once more retrained victimization transfer learning technique. The projected system conjointly grades the fruit supported the share of infection. The system is developed in Tensor flow platform. For the projected work banana, apple and cherry fruits square measure thought of.

#### **A Nearest Neighbour approach for fruit recognition in RGB-D images supported detection of convex surfaces.**

The projected CTI descriptor is compared to the SHOT descriptor, a typical descriptor for 3D purpose clouds. Two variants of the each CTI and SHOT descriptor square measure evaluated, a variant that uses color and a variant which does not . A k-nearest neighbour classifier is used to classify detected surfaces into two classes: fruit and alternative. the main advantage of the projected skilled system as compared to alternative fruit recognition solutions is its process potency, that is of nice importance for its target application AN automatic fruit picker. The projected approach is evaluated using a difficult dataset containing RGB-D pictures of four fruit kinds nonheritable below uncontrolled conditions, that has been created publically obtainable to the scientific community, permitting benchmarking of novel fruit recognition strategies.

#### **A Modified Canny Edge Detection Algorithm for Fruit Detection & Classification**

In this study, an image process methodology has been done victimization clever Edge Detection (CED) algorithm to identify and type the fruits. In additionally thereto Modified Canny Edge Detection (MCED) algorithm is projected to develop a fruit recognition methodology victimization color and kind of the fruits. during this work, solely two differing types of fruits (i.e. apples and oranges) unit of measurement chosen for the experiment.

#### **A Practical Solution for Ripe Tomato Recognition and Localization**

This paper presents simple and quick algorithms that bring the low-cost computation of a software/hardware method for a practical robot vision solution for ripe tomato choosing in greenhouses. the solution has three steps. First, it uses a single-colour element V during a YUV color space to section out the ROI (region of interest) of ripe tomatoes from the background, green stems and foliage. Second, a edge extractor with a constrained curvature is developed to extract the arc edges inside an exact radius vary supported the ripe tomato model for scheming the central points of every ripe tomato that was detected within the beginning. Finally, in keeping with the circle circle relationship found within the geometric analysis, the overlapping space between two ripe tomatoes is calculated, and therefore the depth ordering of the two overlapping ripe tomatoes is decided. The key contribution of this projected answer is that the period of time recognition and localization of ripe tomatoes that square measure coated by inexperienced foliage, stems and unripe tomatoes within the universe. Simplicity and usefulness square measure the key concerns of this solution.

#### **A Fruit Size Detecting and Grading System Based on Image Processing**

This paper presents a fruit size detecting and grading system supported image process. when capturing the fruit prospect image, some fruit characters is extracted by victimization detecting algorithms. keep with these characters, grading is realised. Experiments show that this embedded grading system has the advantage of high accuracy of grading, high speed and low price. it'll have an honest prospect of application in fruit quality detecting and grading areas. so on up fruits' quality and production potency, reduce labour intensity, it is necessary to analysis nondestructive automatic detection technology. Fruit non-destructive detection is that the method of sleuthing fruits' within and outdoors quality with none injury, victimization some detecting technology to make analysis according some normal rules. Nowadays, the quality of fruit form, default, color and size then on cannot evaluated on line by the traditional ways. With the event of image process technology and laptop package and hardware, it becomes tons of engaging to watch fruits' quality by victimization vision detecting technology. at the present , most existing fruit quality detecting and grading system have the dis-advantage of low potency, low speed of grading, high price and quality. therefore it is vital to develop high speed and low price fruit size detecting and grading system.

#### **A Method for Color Classification of Fruits supported Machine Vision**

A dominant color histogram matching methodology for fruits classification was given during this paper. In classification of fruits supported machine vision, image was nonheritable with a color CCD camera that out-putted color info in three channels, red, green, and blue. As a results of ancient RGB color area couldn't meet subjective color sensation of soul, therefore color image required to be remodeled from RGB to HSV color area that depicted human



being’s subjective color data. However, the conversion result was still three-dimensional info that created determinative color grades terribly troublesome. A replacement color area conversion technique which may be enforced for high-speed processing for color grading was introduced during this paper. The results of this technique was an easy one-dimensional array that depicted totally different color levels. These colours were mentioned as dominant colours of fruits. The technique reduced computation consumption greatly. colour bar chart as a applied math feature had visual changelessness and high hardness. The dominant colour bar chart matching methodology was used for color grading. Grade judgment result was given by scheming and comparison the similarity between the inspected sample bar graph and normal templet bar graph for every grade, fruit sample would be appointed to the grade whose templet had the foremost important similarity with it. Experiment results show that dominant colour bar chart matching methodology has high accuracy in fruits’ color classification.

**III. SYSTEM ARCHITECTURE**

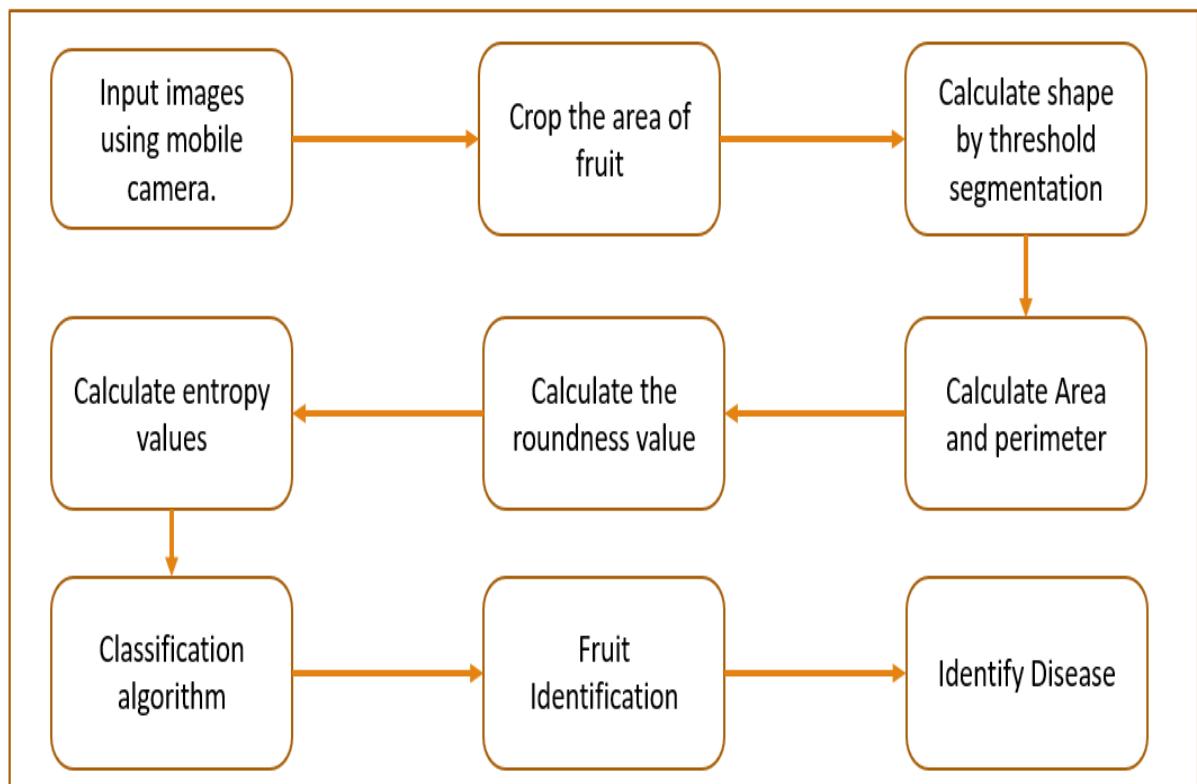


Fig: System Architecture

**IV ALGORITHM**

The traditional neural network is not capable of dealing with images. Consider just in case of the regular network, imagine each pixel is connected to at least one neuron and there'll be thousands of neurons which can be computationally expensive. Convolutional Neural Network (CNN) handles images in several ways, but still, it follows the overall concept of Neural Network. In constructing the CNN, it mainly consists of three parts – Convolution, Polling, Flattening. The fundamental purpose of convolution is to select characteristics from the input image. It conserves the spatial relationship between pixels by learning image characteristics using small squares of input file . The output obtained may be a matrix referred to as the feature map. A further operation called ReLU is employed after every convolution operation. The next step is of Pooling which is additionally referred to as sub-sampling or down-sampling. In Max Pooling, it defines a spatial neighbourhood and takes the most important element from the rectified feature map within that window. The other method is to require the typical of all elements therein window. After pooling, next stage comes is flattening. In this step, the matrix is converted into a linear array in order that to input it into the nodes of the neural network. The full connection is connecting a convolutional network to a neural network

then compiling network. The usage of CNN helps in minimizing the amount of parameters needed for images. It also helps to try to the parameter sharing because it can possess translation invariance.

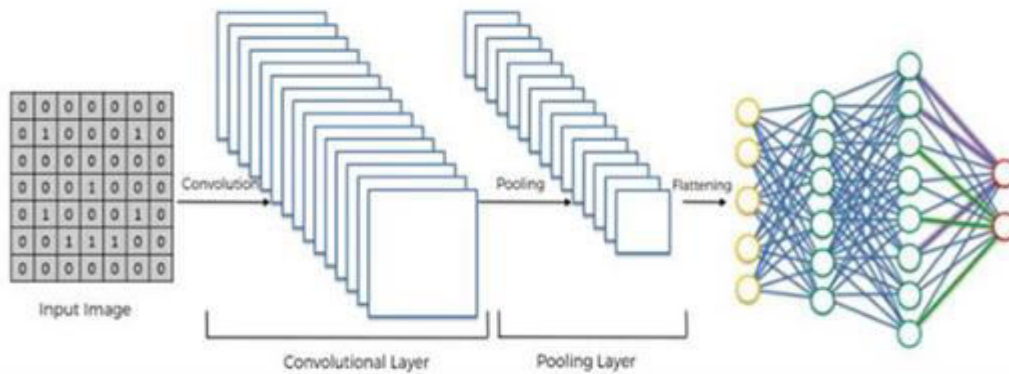


Fig: CNN (Source Medium)

## V. CONCLUSION AND FUTURE WORK

In this work, we proposed a low-cost, Flexible system which will find out different parameters like fruit type, color, damage level, freshness, and ripeness of given fruit according to its natural condition. For future scope we will add automatic fruit harvesting with robotic arm on basis of grading. Also Sorting of different fruits can be done on basis of damaged level, size and shapes of fruits.

## REFERENCES

- [1] Y. Tang, Y. Zhang and Y. Zhu, "A Research on the Fruit Recognition Algorithm Based on the Multi-Feature Fusion," 2020 5th International Conference on Mechanical, Control and Computer Engineering (ICMCCE), 2020, pp. 1865-1869, doi: 10.1109/ICMCCE51767.2020.00409.
- [2] M. Nikhitha, S. Roopa Sri and B. Uma Maheswari, "Fruit Recognition and Grade of Disease Detection using Inception V3 Model," 2019 3rd International conference on Electronics, Communication and Aerospace Technology (ICECA), 2019, pp. 1040-1043, doi: 10.1109/ICECA.2019.8822095.
- [3] Emmanuel Karlo Nyarko, Ivan Vidović, Kristijan Radočaj, Robert Cupec, A nearest neighbor approach for fruit recognition in RGB-D images based on detection of convex surfaces, Expert Systems with Applications, Volume 114, 2018, Pages 454-466, ISSN 0957-4174.
- [4] M. K. Monir Rabby, B. Chowdhury and J. H. Kim, "A Modified Canny Edge Detection Algorithm for Fruit Detection & Classification," 2018 10th International Conference on Electrical and Computer Engineering (ICECE), 2018, pp. 237-240, doi: 10.1109/ICECE.2018.8636811.
- [5] Chen, Xuming and Yang, Simon X. (2013), "A Practical Solution for Ripe Tomato Recognition and Localisation", Journal of Real-Time Image Processing, Vol. 8, No. 1, pp. 35-51, January 2013.
- [6] Dang, Hongshe, Song, Jinguo and Guo, Qin (2010), "A Fruit Size Detecting and Grading System Based on Image Processing," 2010 Second International Conference on Intelligent Human-Machine Systems and Cybernetics, pp. 83-86.
- [7] Li, Changyong, Cao, Qixin and Guo, Feng (2009), "A Method for Color Classification of Fruits Based on Machine Vision", WTOS 8, Vol. 2, pp. 312-321, February, 2009.
- [8] Seng, Woo Chaw and Mirisae, SeyedHadi (2009), "A New Method for Fruits Recognition System", Electrical Engineering and Informatics, Vol. 01, pp. 130-134, August 2009.
- [9] Blasco, Aleixos N. and Mollo E. "Machine Vision System for Automatic Quality Grading of Fruit", Biosystems Engineering, 2003. Vol. 85: pp. 415-423.
- [10] Leemans, V., Mageinb, H. and Destain, M.F. (2002), "On-line Fruit Grading According to their External Quality using Machine Vision", Journal of Automation and Emerging Technologies, Belgium. Biosystems Engineering, pp. 397-404, 2002
- [11] J. V. Frances, J. Calpe, E. Soria, M. Martinez, A. Rosado, A.J.Serrano, J. Calleja, M. Diaz, Application of ARMA modeling to the improvement of weight estimations in fruit sorting and grading machinery, IEEE 2000.
- [12] Nakano, Kazuhiro (1997), "Application of Neural Networks to the Color Grading of Apples", Computers and Electronics in Agriculture, Elsevier, pp. 105-116, 1997.
- [13] Heron, J.R., and Zachariah, G.L. (1974), "Automatic Sorting of Processing Tomatoes". Transaction of the ISAE, Vol. 17, No. (5): pp. 987-992.



**INNO**  **SPACE**  
SJIF Scientific Journal Impact Factor

**Impact Factor:  
7.512**

**ISSN** INTERNATIONAL  
STANDARD  
SERIAL  
NUMBER  
**INDIA**



# INTERNATIONAL JOURNAL OF INNOVATIVE RESEARCH

IN SCIENCE | ENGINEERING | TECHNOLOGY

 **9940 572 462**  **6381 907 438**  **ijirset@gmail.com**



[www.ijirset.com](http://www.ijirset.com)

Scan to save the contact details