



e-ISSN: 2319-8753 | p-ISSN: 2347-6710

IJRSET

International Journal of Innovative Research in
SCIENCE | ENGINEERING | TECHNOLOGY

INTERNATIONAL JOURNAL OF INNOVATIVE RESEARCH

IN SCIENCE | ENGINEERING | TECHNOLOGY

Volume 11, Issue 12, December 2022

ISSN INTERNATIONAL
STANDARD
SERIAL
NUMBER
INDIA

Impact Factor: 8.118

9940 572 462

6381 907 438

ijirset@gmail.com

www.ijirset.com

Comparative Study of Strength Parameters of Clay by Inclusion of Untreated and Treated Coir Fibres

Anjana S¹

Lecturer, Department of Civil Engineering, Central Polytechnic College, Thiruvananthapuram, India¹

ABSTRACT: Reinforced soil imparts greater strength to the soil. The reinforcement used is the natural fibre, coir. India is one of the largest leading producers of coir, it can be used as a reinforcement for weak soil such as clay. One of the major limitation is that coir fibre is degradable and hence the durability of coir fiber can be extended by treating it with reagent like sodium hydroxide and dust cleaning reagent. A series of compaction tests were conducted and the optimum moisture content was obtained and from the result unconfined compression test, CBR were conducted and an improvement in the strength parameters was studied.

KEYWORDS: coir, sodium hydroxide, dust cleaning reagent, clay

I. INTRODUCTION

Soil has been used as a construction material from past. Weak soils are poor in mechanical properties, it has been putting challenges to civil engineers, to improve its properties depending upon the requirement which varies from site to site. Addition of fiber in soil improves the overall engineering performance of soil. Fiber reinforced soil has been used in many countries in the recent past. Fiber reinforced soil is effective in all types of soils. Of all the natural fibers coir is having one of the highest tensile strength and retains this property even in wet condition. Studies have also shown that durability of natural fibre can be improved using coating of fibre with phenol, bitumen, kerosene. The primary purpose of reinforcing a soil mass is to improve its stability by increasing its bearing capacity, and by reducing settlement and lateral deformation. The random inclusion of various types of fibers, in which the fibers act to interlock soil particles. Their main advantage is that they are locally available and are of low cost.

II. MATERIALS AND METHODOLOGY

The clay was collected from English Indian Clay Limited, Kochuveli, Trivandrum. The clay collected was kaolinite. The coir was collected from coir board, Pathirapally, Alappuzha. The reagents used were Sodium hydroxide, Dust cleaning reagent. Sodium hydroxide was purchased from Chemical laboratory shop Trivandrum. Dust cleaning reagent was purchased from Local market Bangalore.

The initial properties of clay including Atterberg limits, specific gravity were obtained. Hydrometer analysis were conducted to find the percentage of sand, silt and clay. Using optimum moisture content obtained from compaction test unconfined compression tests and CBR were conducted. Coir fibers of 20mm length were cut. Fibre percentages were varied from 0.5%, 0.75%, 1%, 1.25%, 1.5% of dry weight of soil. Optimum percentage of fibre are obtained from unconfined compression test and CBR tests. Fibers are treated with 1% NaOH, 2% NaOH, 1% dust cleaning reagent, 2% dust cleaning reagent and allowed for submerging in the solution for 24 hours and air dried for 7 days, compaction test are conducted by varying the percentage of fiber 0.5%, 0.75%, 1%, 1.25%, 1.5% and variation in maximum dry density, OMC were observed and UCC test and CBR tests were conducted. The SEM study was done to study the morphology of coir fibre



III. RESULTS AND DISCUSSIONS

The table 1 shown below gives the properties of the kaolinite clay collected from the English Indian Clay

TABLE I. PROPERTIES OF THE SOIL

Properties	Values
Liquid limit	34.90%
Plastic limit	23.75%
Plasticity index	11.15%
Unified Soil classification	CL
Shrinkage limit	21%
Maximum dry density	14.2 kN/m ³
Optimum moisture content	30.5%
Specific gravity	2.6
Percentage of sand	4.2%
Percentage of clay	60%
Percentage of silt	35.8%
Undrained shear strength	24.6 kN/m ²
CBR	1.89

TABLE II. PROPERTIES OF COIR

Properties	Values
Length(inches)	6-8
Density(g/cc)	1.4
Tenacity(g/tex)	10.0
Breaking elongation	30%
Colour	white

TABLE III. PROPERTIES OF SODIUM HYDROXIDE

Properties	Values
Molecular weight	40
Assay	96%
Sulphate	0.05%
Potassium	0.1%
Zinc	0.02%
Chloride	0.01%
Carbonates	2%
Silicates	0.05%



TABLE IV. PROPERTIES OF DUST CLEANING REAGENT

Properties	Values
Diethanolamine	1.5%
Magnesium oxide	5%
Ethyl alcohol	5%
Dodecyl benzene Sulphonic acid	30%
Sodium lauryl ether sulphate	20%

TABLE V. COMPACTION RESULT FOR CLAY BY INCLUSION OF UNTREATED COIR FIBRE

Percentage of fibre (%)	Values	
	Maximum Dry Density(kN/m^3)	Optimum Moisture Content (%)
0.5	14.00	31
0.75	13.95	31.5
1.0	13.9	32.0
1.25	13.8	32.62
1.5	13.7	32.8

Variation in Maximum dry density of clay by addition of fibre

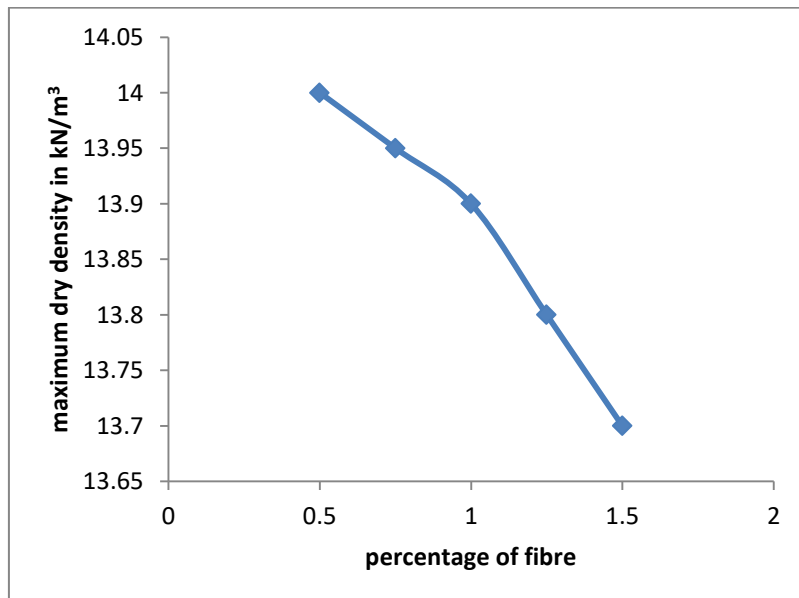


Fig 1. Variation in optimum moisture content.

The dry density decreases with addition of coir fibre due to lower specific gravity of coir fibre replaces clay of higher specific gravity.

Variation in Optimum moisture content of clay by addition of fibre

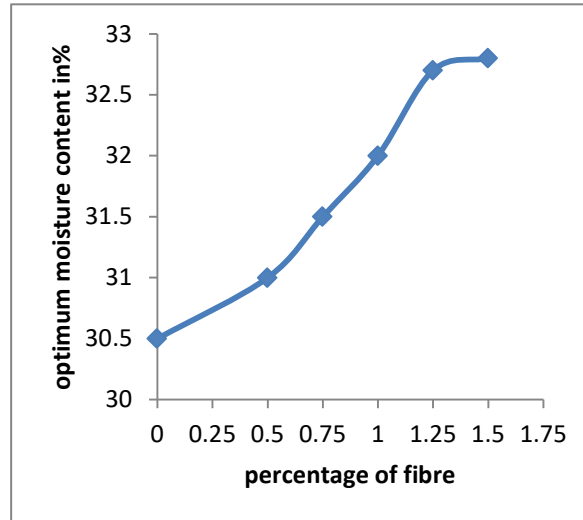


Fig 2. Variation in optimum moisture content.

The optimum moisture content increases with addition of coir fibre as coir fibre absorbs more water due to the presence of hemicellulose

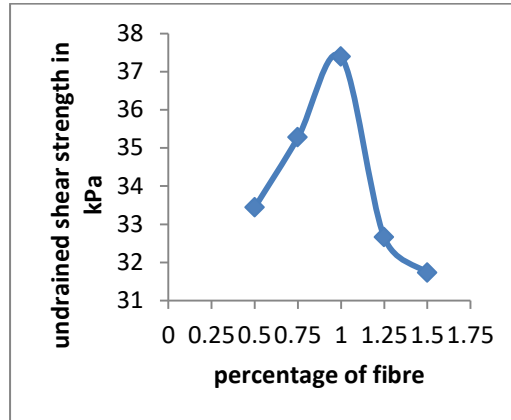


Fig 3. Variation in shear strength.

The shear strength was improved by the addition of coir fibre upto 1% and thereafter decreases. This is due to perfect interlocking of coir fibre with the soil upto particular limit and thereafter decreases due to reduced contact area between soil and fibre. The optimum percentage is 1%.



Variation in CBR

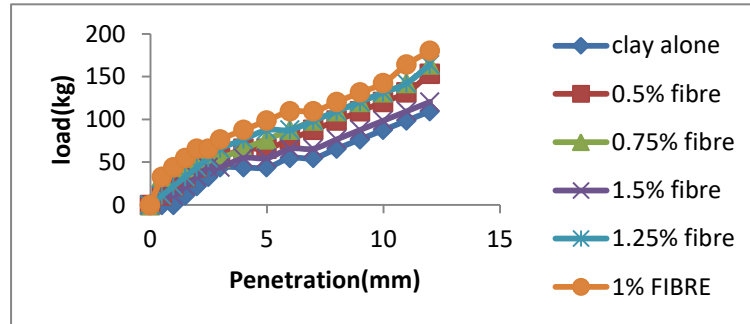


Fig 4. Load penetration graph.

The CBR values was improved by addition of fibers upto 1% and thereafter decreases. This is due to reason that randomly oriented discrete fibres in soil mass improves its load deformation behaviour by interacting with the soil particles mechanically through surface friction and also by interlocking. The function of bond or interlock is to transfer the stress from soil to the discrete inclusion by mobilizing the tensile strength of discrete inclusion. Thus, fiber reinforcement works as frictional and tension resistance element.

Compaction tests in clay by treated coir fibre

- 1%NaOH treated fibre.

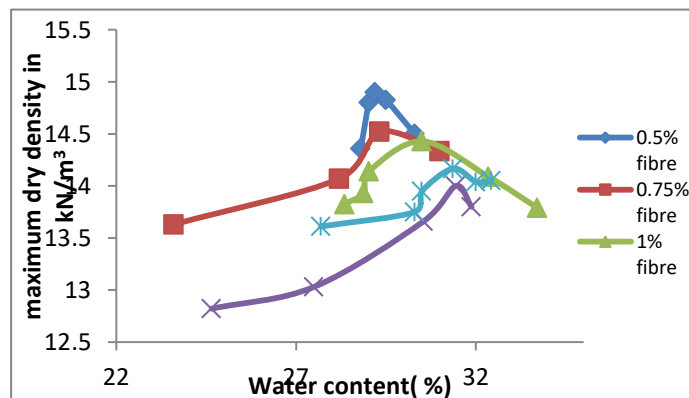


Fig 6. Compaction curves of clay by inclusion of 2%NaOH treated clay.

1% DUST CLEANING REAGENT

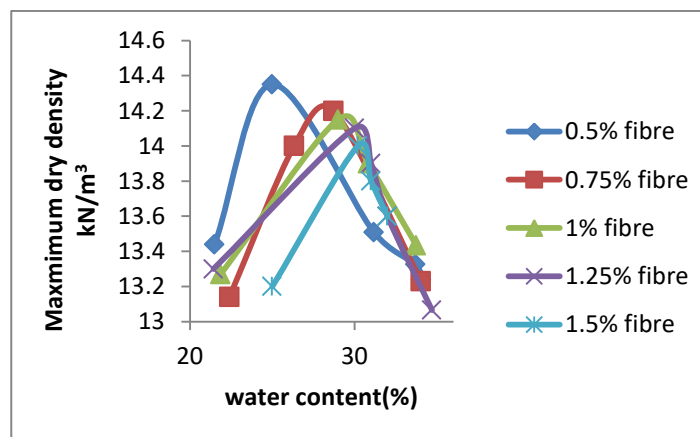


Fig 7. Compaction curves of clay by inclusion of 1%Dust cleaning reagent treated fibre



- 2% Dust cleaning reagent treated fibre in clay

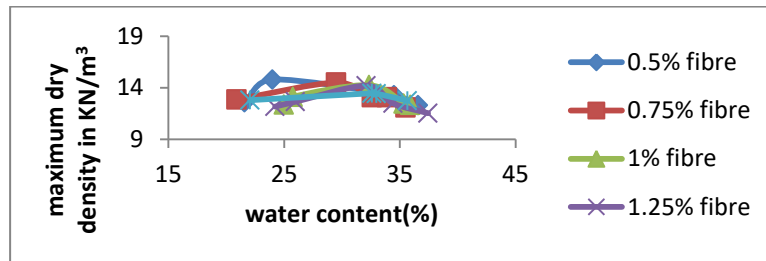


Fig 8. Compaction curves of clay by inclusion of 2% Dust cleaning reagent treated fibre

Comparison between treated and untreated coir fibre

- Variation in Maximum dry density

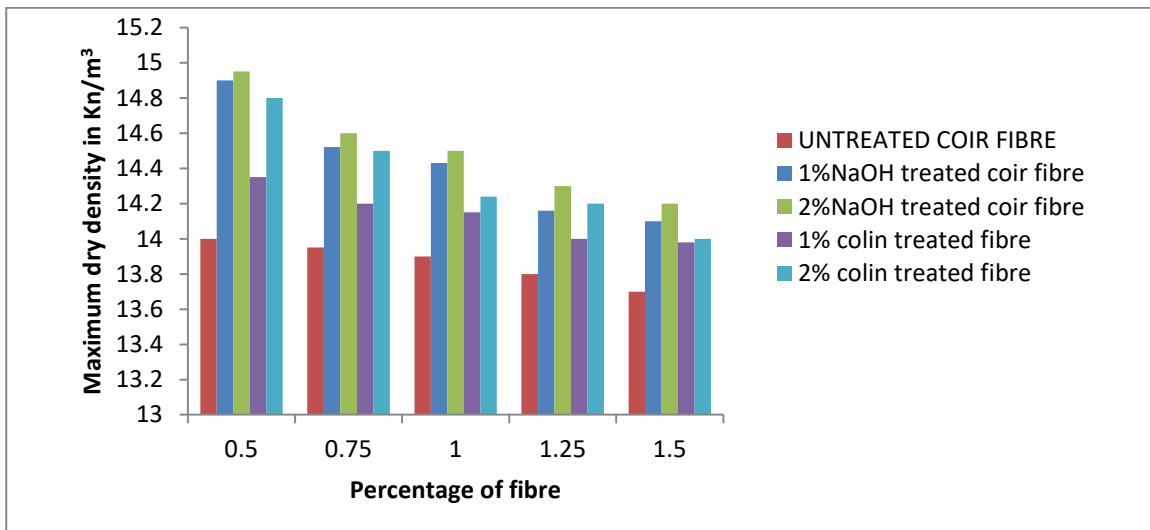


Fig 8. Variation in maximum dry density.

The maximum dry density was higher for treated fibre than untreated fibre because due to treatment there will be surface irregularities in the surface of coir fibre and hence denser packing of clay happens.

- Variation in optimum moisture content

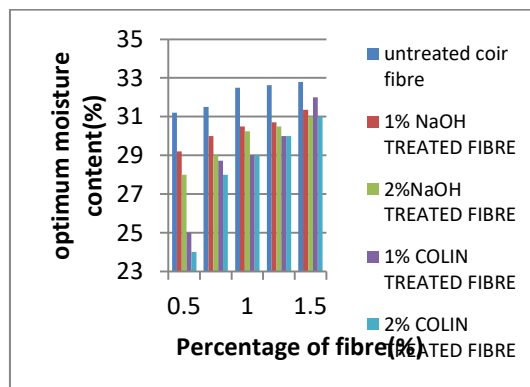


Fig 9. Variation in optimum moisture content

The optimum moisture content was higher for untreated fibre than treated fibre due to the presence of hemicellulose in coir fibre and washed away by treatment.

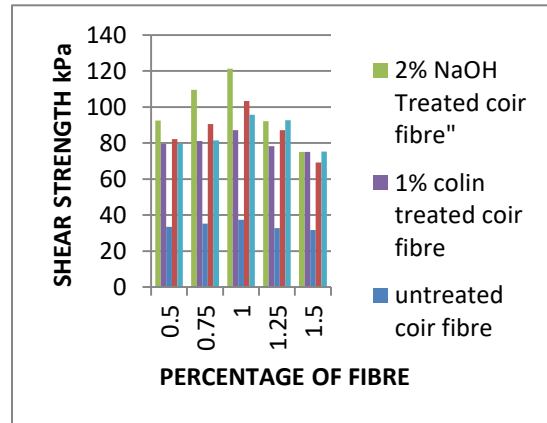


Fig 10. Variation in shear strength.

The shear strength was calculated by unconfined compression test. Among these 2%NaOH treated fibre in clay shows higher value due to high bleaching action of sodium hydroxide. The treatment using reagents removes impurities such as lignin, pectin ,hemicellulose from coir fibre and pores are free from impurities .To these pores clay will get bonded and improves bonding hence improves shear strength

- Variation in CBR

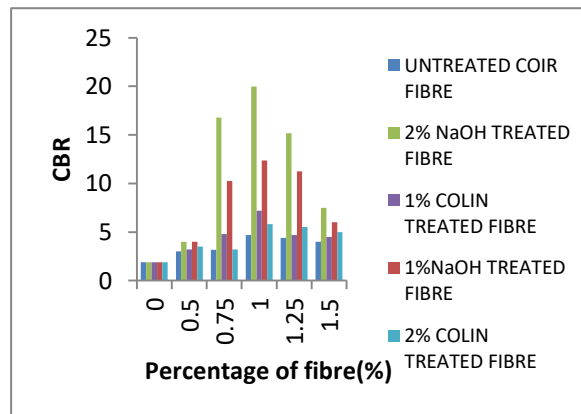
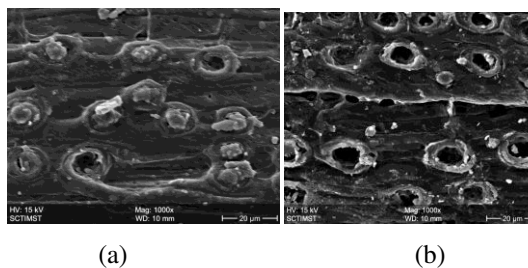


Fig 10. Variation in CBR.

The CBR for 2%NaOH treated fibre in clay shows higher value due to high bleaching action of sodium hydroxide. The treatment using reagents removes impurities such as lignin, pectin ,hemicellulose from coir fibre and pores are free from impurities .To these pores clay will get bonded and improves bonding.The optimum percentage was obtained as 1%.

- Scanning Electron Microscopy



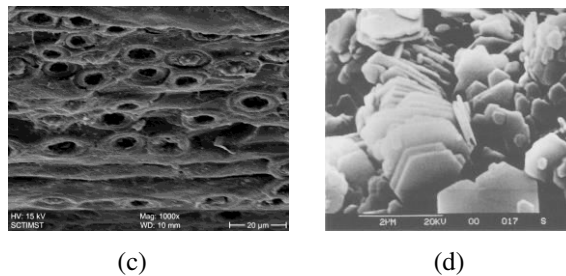


Fig 11. SEM images of (a) untreated coir fibre (b) NaOH treated fibre (c) coir treated fibre (d) kaolinite clay

The SEM images show that untreated fibers have impurities in the pores of coir fibre. The Sodium hydroxide and coir treated fibres remove impurities present in coir fibres such as lignin, pectin, and hemicelluloses, and the clear pores are visible in the image. The pore size of coir fibre is recorded as nearly 20 micrometre, and the size of clay is recorded as nearly 2 micrometre, hence the clay fits into the pores of coir fibre and hence the bonding strengthens.

IV. CONCLUSIONS

From the study, the CBR and shear strength of clay were improved by the addition of coir fibre. For each test, the optimum percentage was obtained as 1%.

- By addition of coir fibre, the maximum dry density decreases due to the replacement of low specific gravity coir fibre by high specific gravity clay.
- By addition of coir fibre, the optimum moisture content increases due to the large amount of pores in coir fibre and hemicellulose of coir fibre, which are responsible for absorption of water.
- The shear strength of clay was improved by the addition of coir fibre. This is due to the interlocking of coir fibre with clay.
- The shear strength of clay was improved by almost thrice by the addition of treated fibre than that of untreated fibre. This is due to the removal of impurities like lignin, pectin, and hemicellulose of coir fibre, which causes surface irregularities, hence responsible for good bonding.
- The optimum percentage of fibre obtained as 1%. Beyond 1%, the shear strength decreases due to fibre percentage becoming more.
- Among the reagents used, 2% NaOH treated fibre in clay shows a higher improvement. This is due to the high bleaching action of sodium hydroxide.

REFERENCES

- [1] R.P. Munirwan et al., "Performance of coir fibre addition for clay as a subgrade for Pavement Design" IOP Conf. Ser.: Mater. Sci. Eng. 712 012009
- [2] Neelu Nandan Vibhakar and Siddharth Nahta, "Study of the effect of Coir Fibre reinforcement on the strength parameters and CBR value of clayey soil". International Journal of Engineering Research and Technology ISSN 2278-0181 Vol 3 Issue 4 April 2014
- [3] A T Subhramani and D Udayakumar, "Experimental study of clay soil using Coir fibre," International Journal of Applications of Innovation in Engineering and Management, Vol 5 Issue 5 May 2016
- [4] Venkitesh A, Sayida Anwer, Suprit M R, Sachin M S, Goutham D R, "Experimental Investigation on Expansive soil stabilized using Coir Fibre" International Journal of Civil and Structural Research ISSN 2348-7607, Vol 7 Issue 1 April 2019-September 2019



INNO SPACE
SJIF Scientific Journal Impact Factor
Impact Factor: 8.118



ISSN INTERNATIONAL
STANDARD
SERIAL
NUMBER
INDIA



INTERNATIONAL JOURNAL OF INNOVATIVE RESEARCH

IN SCIENCE | ENGINEERING | TECHNOLOGY

 **9940 572 462**  **6381 907 438**  **ijirset@gmail.com**



www.ijirset.com

Scan to save the contact details