



e-ISSN: 2319-8753 | p-ISSN: 2347-6710

IJRSET

International Journal of Innovative Research in
SCIENCE | ENGINEERING | TECHNOLOGY

INTERNATIONAL JOURNAL OF INNOVATIVE RESEARCH

IN SCIENCE | ENGINEERING | TECHNOLOGY

Volume 11, Issue 2, February 2022

ISSN INTERNATIONAL
STANDARD
SERIAL
NUMBER
INDIA

Impact Factor: 7.569

9940 572 462

6381 907 438

ijirset@gmail.com

www.ijirset.com

Methods used for Extraction of Vital Parameters

P.Deepakfranklin¹, Dr.P.Saravanan², Dr.K.Sampath Kumar³

Asst .Professor, Department of EEE, Sriram Engineering College, Thiruvallur, Chennai, India¹

Professor, Department of EEE, Sriram Engineering College, Thiruvallur, Chennai, India²

Professor, Department of Electrical and Electronics Engineering, Shree Sathyam College of Engineering and Technology, Sankari, Salem, India³

ABSTRACT: In today's world effective monitoring of biomedical parameters are essential. There are several applications that use these parameters to analyze the health conditions of an individual. PPG signal is one of the vital biomedical parameters which can be obtained by non-invasive method. Extracting necessary details from this signal is a crucial task. PPG signal contains various information such as rate at which heart beats, respiration rate, blood pressure, etc. Effective methods required to get necessary details from a raw PPG signal. Let us study various algorithms that are used to extract these features, along with its pros and cons.

KEYWORDS: Photo Plethysmograph - PPG, heart rate, respi- ration rate, blood pressure, pulse wave velocity, Wavelet.

I. INTRODUCTION

BIOMEDICAL signals such as EEG, ECG, EMG, PPG carry vital information about the activity of human organs, by extracting details from these signals health condition of the organs can be monitored. Various studies are going on about the information contained by these signals. Among these signals Photo Plethysmography draws more attention from the researchers [1-9]. PPG measuring devices are used in various equipment to find the biological signal. PPG can be obtained through various methods. PPG signal can be extracted from human beings through two methods contact and non-contact. In contact method an infrared light is made to pass through the veins at locations in a body like a wrist, finger and ear lobes then the light is collected by the suitable detector, change in blood volume gets reflected in the change in absorption rate of light. The signal obtained carries information of heart activities [5- 6]. Different light sources can be used to get different results. Major issues in this method are motion artifact, the pressure used to hold the wearable device in position and source of light [6-8]. The contact method may follow the reflective mode of operation or transmissive mode. In a reflective mode both light emitter and receiver reside side by side on the location under monitoring [12-13]. In transmissive mode source will be on one side and the detector will be on the other side whereas the monitoring area is between source and detector [13]. In a non-contact method, a camera is used to capture the subject whose PPG signal has to be obtained from these images, a PPG signal is extracted. Ambient light or different light sources can be used to illuminate the subject for better results. Several pieces of research are going on under IPPG, Imaging Photo Plethysmograph monitor PPG signal and this method overcomes various issues faced in the contact method [9-11]. The camera used in IPPG may be of a digital camera, infrared camera, or a mobile camera. The PPG signal obtained from a low-cost noninvasive technology contains information on the blood volume change in the tissues that are due to the cardiovascular system. Hertzman was the one who termed Photo Plethysmograph [15]. PPG signal comprises of AC as well as some DC component; AC is due to blood volume change that reflects much of cardiovascular activity and DC is due to thermoregulation, respiration, sympathetic nervous system activities and Venous flow [5]. Several classic methods such as Poincare, power spectral analysis, time-delay analysis, exponent and surrogating have been proposed to determine the characteristics of PPG and from its results that are used for various medical applications [16-18]. This paper will concentrate on the methods used to extract features from the PPG signal that may be obtained from any of the above techniques.

II. METHODS FOR FEATURE EXTRACTION

Extracting features from the PPG signal started earlier in 2000 and still, the researchers are going on to enhance the methods. The PPG signal holds all the vital information about the cardiovascular system by analyzing its various heart-related issues that can be identified at the earliest and can be treated. Tradition methods as well as latest methods have several similarities and dissimilarities which in detail will be portrayed in forthcoming sections.

A. Wavelet analysis of PPG signal

Wavelet transformation is an analysis where frequency and time are simultaneously observed. It can be used to analyze signals that are not steady such as biomedical signals. Continuous wavelet transform is used here to broadly analyze frequency components.

Morlet wavelet is exploited to obtain more details. The tidal wave is shown in the figure. 1 which indicates the blood vessels hardening. TWv, the voltage difference of percussion waves Incisors and TWt, time difference of Percussion wave Incisors is used to form stress index using wavelet analysis on PTG [19]. Refer figure 2 for Morlet waveform.

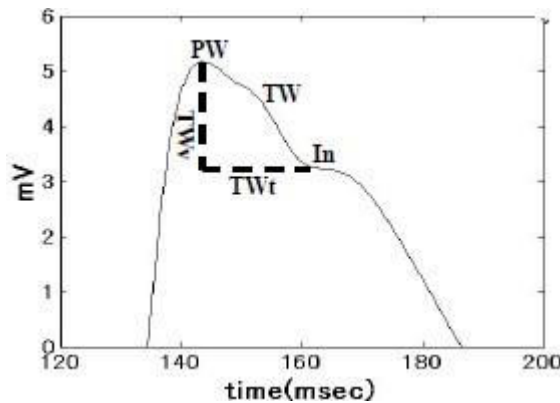


Fig. 1. PTG waveform showing Tidal wave region indicating TWv and TWt.

In Resting stage PTG is measured where no noise source is used and in stress stage PTG is measured with increased exposure to noise source, the difference in stress index is observed for these two stages and considerable change is noted.

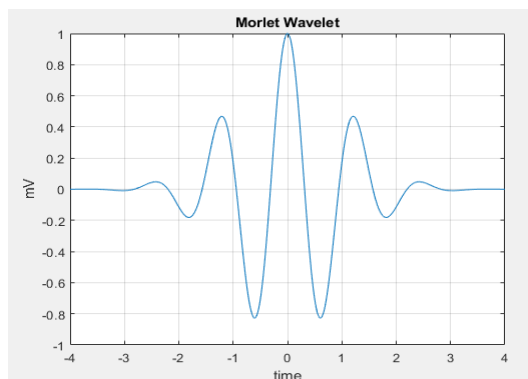


Fig. 2. Morlet Wavelet simulated using MATLAB.

B. PCA on PPG

Principle Component Analysis invented by Karl Pearson to change set of variables that are correlated into set of values that are not correlated which involves orthogonal changes [20]. Various features such as pulse to pulse interval, pulse amplitude, upslope, downslope, area of pulse and Wavelet decomposed band are used to determine relative respiratory effort signal. The desired frequency from 0.15 to 0.45 Hz is selected as it is the respiratory frequency range. Orthogonal property is used to remove redundant information [21].

$$RelativeEffort (Ptt) = 0.41 * Area + 0.0001 * Upslope + 0.06 * Peakamp + 0.84 * PWA - 0.11 * PPInterval - 0.04 Valleyamp - 0.0002 * Downslope - 0.21 Wv \tag{1}$$

Features having weight less than 0.1 are rejected and those having more than 0.1 such as PWA, PPInterval, Area and Wv features are selected to estimate relative respiratory effort. Peakamp decreases as tissue blood volume increases and vice versa. During Systole PWA is directly proportional to blood volume and PPInterval represents period of Heart cycle [22- 23].

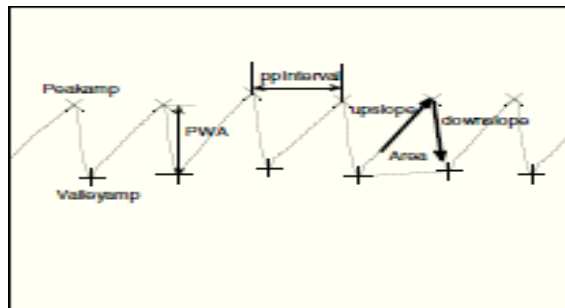


Fig. 3. PPG Signal showing peakamp, ppinterval, upslope, downslope and valleyamp.

C. Bilateral Photo plethysmography analysis with fractional order Feature

PPG measurement detects blood volume change in earlobes, fingers, and wrist unilaterally as well as bilaterally. Bilateral measurements increase as vascular disease evolve. [24]. The bilateral measurement is taken by measuring two PPG signal one from left hand thumb and other from right hand thumb, synchronously. The Sprott System is used to design a Self- Synchronized Error Function. The output of master is ϕ_1 and output of slave is ϕ_2 . Data acquisition system along with a Computerized Assistance System is used to collect data from PPG Signal and Screen the stenosis level in patient. Norm of ϕ_1 and ϕ_2 are calculated which gives the fractional order dynamic error, ψ . As the fractional order dynamic error increases degree of stenosis also observed to show considerable increase [25]. Refer figure 4 for relationship between degree of stenosis and fractional-order dynamic error.

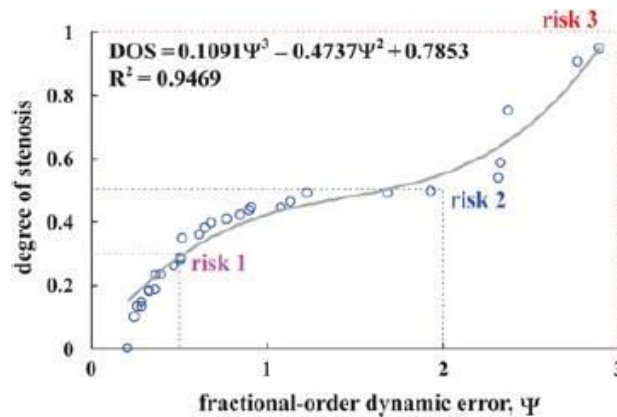


Fig. 4. Degree of Stenosis vs Fractional –order dynamic error.

D. PWV and PTT

In traditional way of measuring Pulse Wave Velocity (PWV) PPG signal along with ECG is measured, here in order to measure pulse transit time (PTT) two PPG measurements alone are considered. PTT is the duration from systolic to diastolic peak. In PPG duration of two peaks from PPG waveforms measured in different locations of body will give PTT. PWV is inversely proportional to PTT [26]. One PPG measurement is taken from wrist and another taken from finger, the waveform is shown the figure 5.

$$PTT = L/PWV \tag{2}$$

L is the length travelled by pulse.

$$PWV = \sqrt{Eh/R\rho} \tag{3}$$

E = Young's Elasticity modulus h = thickness of vessel wall

ρ = function of blood density R = radius of blood vessel.

$$PTT = L(cP - c/4) \tag{4}$$

P = Blood pressure C = Propagation speed of wave

$$P = A + B(PTT) \tag{5}$$

BP and PTT are related linearly. As BP increases PTT decreases, hence they are inversely proportional. Constant terms A & B can be calculated from Pearson Correlation method. Hence Diastolic and systolic Blood Pressure can be determined [27]. Positioning of PPG sensor is difficult at wrist compared to finger and depth of radial artery vary from person to person, intensity of sensor and pressure between skin and sensor, motion artifact are the issues that may cause distortions during PPG measurement [28].

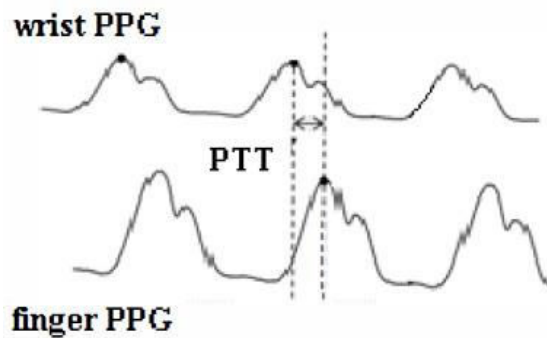


Fig. 5. PPG waveform measured from two different body locations.

E. Chaotic Character analysis by Time delay embedding and lyapunov Exponent Methods

PPG characteristics is observed to have deterministic chaos. Dynamics in time series is reconstructed using Time delay embedding, this reconstructed trajectory holds vital time series characteristics which in turn reveals details of PPG signal properties [31]. In order to obtain independent coordinates, the

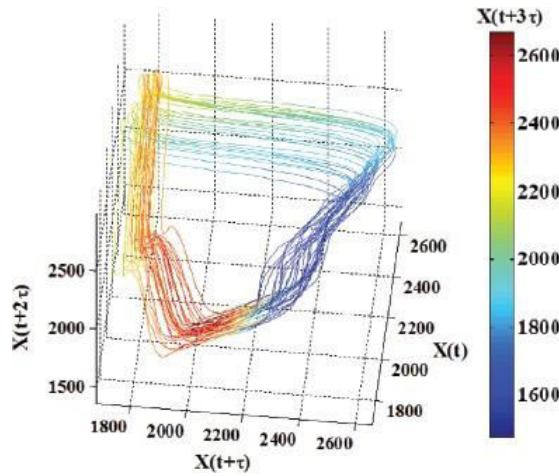


Fig. 6. Reconstructed trajectory by Time Delay Embedding.

F. *Poincare Section*

It determines chaos observed in phase space, hence it is a best tool in exploring dynamic characteristics of a system. As observed in the figure 7 the expansion, bending and stretching of trajectories along attractor tend to reveal the vital properties of the chaotic dynamics and dependencies on initial conditions [30]. Chaotic characteristics of PPG dynamics are determinism, predictability and dependency on initial condition. These features are useful to measure human physiological and mental conditions [31].

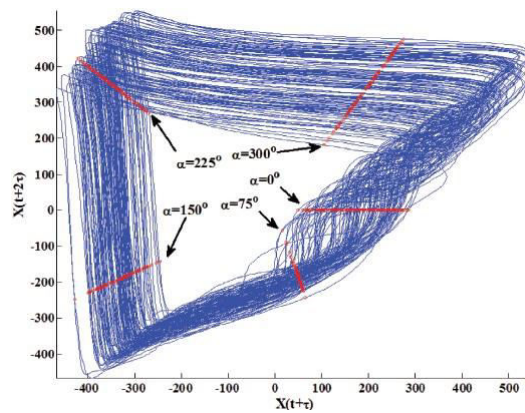


Fig. 7. Reconstructed trajectory using Poincare.

G. *Signal Decomposition to measure HR and RR from PPG*

Decomposition based on Gaussian basis representation gives spatial and frequency variation of the PPG signal. By wave propagation theory the PPG wave is associated with progressive and regressive waves, hence all these waves are considered while modelling Gaussian function. PPG signal can be represented as a number of waveforms under Gaussian basis decomposition as shown in figure 8.

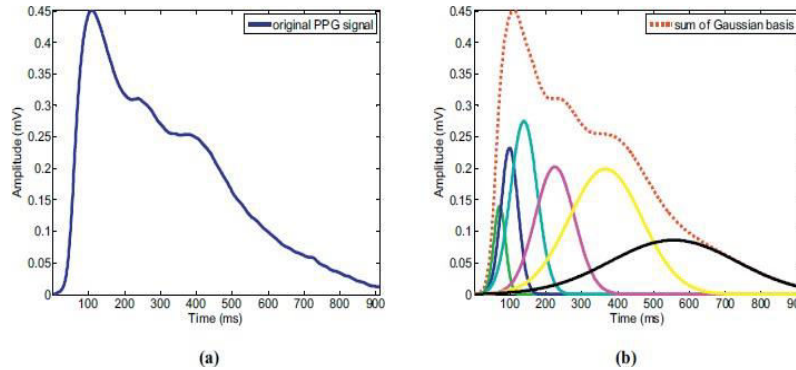


Fig. 8. (a) PPG Signal measured from finger. (b) Sum of Gaussian basis.

$$P'(t) = \sum_{i=1}^n a_i \times e^{-\left(\frac{t-b_i}{c_i}\right)^2} \tag{6}$$

For n Gaussian basis 3n parameters are used to approximate PPG Signal. In order to get a better propinquity effect optimization is done and it removes squared error that is being introduced during approximation. Modified Gaussian –Newton method is used to find the unknown element L in optimized Gaussian Basis, first order derivative is considered [32]. It consumes less computation time. Finally, Hilbert transform is applied to the Gaussian Basis to extract frequencies and phases from which HR and RR measured. This method compares ECG and manual respiration monitoring, accuracy of 7 bpm was achieved [33].

H. Asymmetric Least Squares Spectrum Subtraction and Bayesian Decision Theory on PPG

Handling Motion artifacts while extracting features from PPG Signal is a great challenge. Various techniques are exploited to filter motion artifacts among them Adaptive Filtering [34]-[35] and Spectrum Subtraction [36] are popular and widely used. They have less complexity in computation but not robust and ineffective. Asymmetric Least Square Spectrum Subtraction removes MA in an effective way compared to conventional Spectrum Subtraction method and also reduces undesired peaks in spectrum as the method used is independent of reference peaks. Bayesian decision method uses pattern recognition to identify spectral peaks of heart rate. The heart rate estimated in Bayesian method is again refined to give a better estimate by a post processing stage. Periodogram has been used to find the power spectrum of PPG Signal [37].

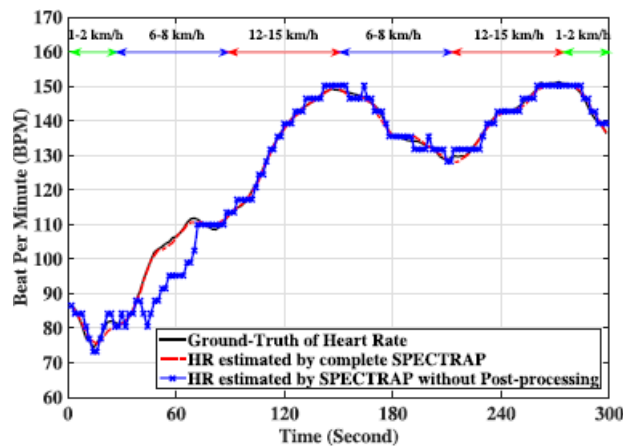


Fig. 9. Heart rate measured with and without post processing.

I. TROIKA

Heart rate monitoring is done using this method which was derived from the names spectral peak tracking, signal decomposition and sparse signal Reconstruction. First stage is decomposition which removes motion artifacts partially from raw PPG Signal. Singular Spectrum Analysis is exploited to perform signal decomposition as it isolate noise from desired oscillatory signal [38]. Second stage, Sparse signal reconstruction is done to improve the resolution of spectral estimation, good robustness and reduced variance which overcomes disadvantages of nonparametric spectrum estimation [39]. Sparse signal reconstruction needs preprocess- ing to obtain sparse spectra. SSR is performed by an algorithm called FOCUSS which is robust, it is used mostly to determine localization and direction of arrival Spectral peak tracking selects only the peaks that are associated with heart rate and reject that are not associated.

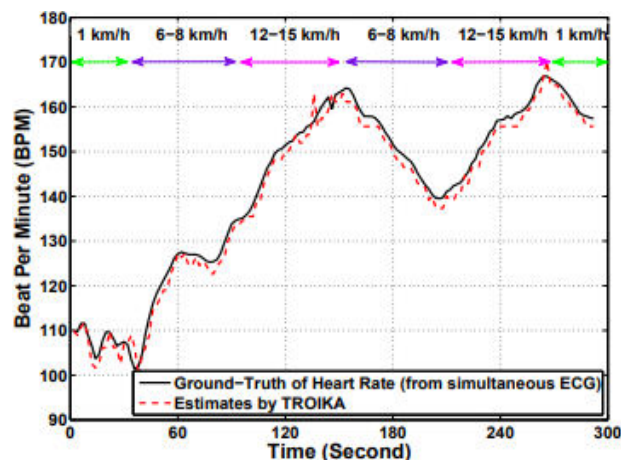


Fig. 10. Estimated heart rate by TROIKA method.

J. Joint Sparse Signal Reconstruction and Spectra Fusion

It is an extended method of Sparse Signal Reconstruction. It exploits the same M-FOCUSS obtain sparse spectra. L vectors are calculated by JSSR method and sparse spectra of PPG signal. Spectra Fusion is used to estimate respiration rate from obtained sparse spectra. Signal quality of the sparse spectra is analyzed and classified into three categories as good, moderates and poor with the help of kurtosis; larger kurtosis means good quality spectra. For estimating respiration rate only good quality sparse spectra are considered, if suppose they are absent moderate quality is considered. Average of the considered spectra is taken and processed by RRT method to determine the Respiration rate, averaging of values can be done before or after implementing RRT .

III. DISCUSSION

PPG signal has vital information about cardio vascular activity it is evident from all the studies that are made earlier and predict various biomedical parameters such as HR, BP, RR, BVC, PR and diagnosing of heart disease are also possible. Several algorithms are discussed to analyze PPG signal and extract various useful information from them. Researches are still going on in analyzing PPG signal to understand it completely. Even latest methods fail to expose the complete possible feature that PPG holds within it.

IV. CONCLUSION

Best location to measure PPG signal are fingers but for various appliances this may not be suitable, so most of the equipment measure PPG from wrist which is convenient even when the person is performing exercise and in active motion. Motion artifact is a great challenge in extraction features without error, algorithms such as TROIKA, SPECTRAP and Sparse Spectral analysis were able handle these artifacts. By employing post processing techniques such as RRT, Spectra fusion, pattern classification method such as Bayesian de- cision and Spectral Peak detection estimation accuracy can be improved which also handles improper placing of sensor over the skin. Machine learning techniques such as k-means classification and decision tree are being

used in every field for better enhancement and it finds more suitable position in Biomedical signal processing as well, as a future enhancement technique.

REFERENCES

- [1] Ivanov PCh and Nunes Amaral LA. Goldberger AL, *Multifractality in human heart beat dynamics*, Nature, 1999;399:461-5. 2
- [2] MascroSA, AsadaHH, *Photoplethysmograph fingernail sensors for measuring finger forces without haptic obstruction*, IEEE Trans Robot Automat 2001;17:698–7083 3
- [3] McClintockPVE, StefanovskaA, *Noise and determinism in cardiovascular dynamics*, Physica A 2002;314:69–76. 4
- [4] PhamTD, ThangTC, Oyama-HigaM, SugiyamaM, *Mental disorder detection using chaos and nonlinear dynamical analysis of photoplethysmographic signal*, Chaos, Solitons and Fractals 2013; 51:64–74. 5
- [5] J. Allen, *Photo plethysmography and its application in clinical physiological measurement*, Physiol. Meas. vol. 28, no. 3, pp. R1–R39, 2007.
- [6] T.Tamura, Y Maeda, M Sekine and M Yoshiba , *Wearable Photoplethysmographic Sensors-Past and Present*, Electronics. 2014,3,282-302: doi:10.3390/electronics 3020282.
- [7] NinaSviridova, KenshiSakai , *Human photoplethysmogram : new insight into chaotic characteristics*, Chaos, Solitons and Fractals 77 (2015) 53–63.
- [8] Yu Sun and Nitish Thakor, *Photoplethysmography Revisited: From Contact to Noncontact, From Point to Imaging*, IEEE transactions on Biomedical Engineering, Vol. 63, No. 3, March 2016.
- [9] J. Kranjec, S. Beguš, G. Geršak, and J. Drnovšek, *Non-contact heart rate and heart rate variability measurements: A review*, Biomedical Signal Processing and Control, vol. 13, pp. 102–112, 2014.
- [10] M. Y.Wong et al, *Contactless and continuous monitoring of heart rate based on photoplethysmography on a mattress*, Physiol. Meas., vol. 31, no. 7, pp. 1065–1074, 2010.
- [11] P. Shi et al, *Non-contact reflection photoplethysmography towards effective human physiological monitoring*, J. Med. Biol. Eng., vol. 30, no. 3, pp. 161–167, 2010.
- [12] S. Vogel et al, *In-ear vital signs monitoring using a novel microoptic reflective sensor*, IEEE Trans. Inf. Technol. Biomed., vol. 13, no. 6, pp. 882–889, Nov. 2009.
- [13] Boudewijn Venema ; Nikolai Blanik ; Vladimir Blazek ; Hartmut Gehring ; Alexander Opp ; Steffen Leonhardt, *Advances in Reflective Oxygen Saturation Monitoring With a Novel In-Ear Sensor System: Results of a Human Hypoxia Study*, IEEE Transactions on Biomedical Engineering Year: 2012 — Volume: 59, Issue: 7 .
- [14] K. Shin et al, *A novel headset with a transmissive PPG sensor for heart rate measurement*, Proc. Int. Conf. Biomed. Eng., vol. 23, no. 1–3, 2009, pp. 519–522.
- [15] A. B. Hertzman, *The blood supply of various skin areas as estimated by the photoelectric plethysmograph*, Amer. J. Physiol., vol. 124, no. 2, pp. 328–340, 1938
- [16] PhamTD, ThangTC, Oyama-HigaM, SugiyamaM, *Mental-disorder detection using chaos and nonlinear dynamical analysis of photoplethysmographic signal*, Chaos, Solitons & Fractals 2013;51:64–74
- [17] TsudaI, *Chaotic pulsation in human capillary vessels and its dependence on mental and physical conditions*, Int J Bifurcat Chaos 1992; 2(2):313–24
- [18] SumidaT, ArimituY, *Mental conditions reflected by the chaos of pulsation in the capillary vessels*, Int J Bifurcat Chaos 2000; 10(9):2245–55.
- [19] Y. Kageyama, M. Odagaki, Student-Member, IEEE and H. Hosaka, Member, IEEE, *Wavelet Analysis for Quantification of Mental Stress Stage by Finger-tip Photo-plethysmograph*, International Conference of the IEEE EMBS; August , 2007.
- [20] Pearson, K. (1901), *On Lines and Planes of Closest Fit to Systems of Points in Space*, Philosophical Magazine. 2 (11): 559–572. doi:10.1080/14786440109462720
- [21] Ahsan H. Khandoker, Senior Member, IEEE, Chandan K. Karmakar, Member, IEEE, Thomas Penzel, Martin Glos, Christoph Schoebel, M. Palaniswami, Fellow, IEEE, *Estimating relative respiratory effort from features of Photo-Plethysmography signal*, International Conference of the IEEE EMBS, Osaka, Japan, 3 - 7 July, 2013.
- [22] M. Nitzan, H. de Beer, S. Turivnenko, A. Babchenko and D. Sapoznikov, *Power spectrum analysis of the spontaneous fluctuations in the photo-plethysmographic signal*, J. Basic Clin. Physiol. Pharmacol., vol. 5, pp. 269–76, 1994.
- [23] M. Nitzan, A. Babchenko, A. Milston, S. Turivnenko, B. Khanokh and Y. Mahler, *Measurement of the variability of the skin blood volume using dynamic spectroscopy*, Appl. Surf. Sci., vol. 106, pp.478–482, 1996.
- [24] Allen J., Oates C.P., Lees T.A., Murray A, *Photoplethysmography detection of lower limb peripheral arterial occlusive disease: a comparison of pulse timing, amplitude and shape characteristics*, Physiol. Meas., 2005, 26, pp. 811–821.

- [25] Jian-Xing Wu, Chia-Hung Lin, Ming-Jui Wu, Chien-Ming Li, Bee-Yen Lim, Yi-Chun Du, *Bilateral photoplethysmography analysis for arteriovenous fistula dysfunction screening with fractional-order feature and cooperative game-based embedded detector*, Healthcare Technology Letters, 2015, Vol. 2, Iss. 3, pp. 64–69
- [26] A. Jobbagy, editor, *Possibility of Finapres Signals for the Estimation of Aortic Pulse Wave Velocity*, 5th European Conference of the International Federation for Medical and Biological Engineering 14 - 18 September 2011, Budapest, Hungary, Springer Science & Business Media, 2012, Vol. 37, IFMBE Proceedings, p.524
- [27] N.Grant, "DNA Microarrays, Part B: Databases and Statistics: Databases and Statistics, Academic Press, Vol.411, Methods in enzymology, 2006, p.10
- [28] Myint. CZ -IEEE Member, King Hann Lim, IEEE Member, and King Ing Wong, IEEE Member, Alpha Agape Gopalai, IEEE Member, Min Zin 00, IEEE Member, *Blood Pressure Measurement from Photoplethysmography to Pulse Transit Time*, IEEE Conference on Biomedical Engineering and Sciences, 8 - 10 December 2014, Miri, Sarawak, Malaysia
- [29] WolfA, SwiftJB, SwinneyHL, VastanoJ, *Determining Lyapunov exponents from a time series*, PhysicaD: Nonlinear Phenom 1985; 16(3):285–317.
- [30] Shelhamer M, *Nonlinear dynamics in physiology : a state-space approach*, Singapore:WorldScientific;2007. NinaSviridova,KenshiSakai, *Human photoplethysmogram : new insight into chaotic characteristics*, Chaos, Solitons and Fractals 77 (2015) 53–63.
- [31] M.R. Osborne, *Separable least squares, variable projection, and the Gauss–Newton algorithm*, ETNA: Electron. Trans. Numer. Anal. 28 (1) (2007)1–15. Dazhou Li, Hai Zhao, Shengchang Dou, *A new signal decomposition to estimate breathing rate and heart rate from photoplethysmography signal*, Biomedical Signal Processing and Control 19 (2015) 89–95.
- [32] L. B.Wood and H. H. Asada, *Low variance adaptive filter for cancelling motion artifact in wearable photoplethysmogram sensor signals*, Proc. 29th Annu. Int. Conf. IEEE Eng. Med. Biol. Soc. (EMBS), Aug. 2007, pp. 652–655.
- [33] S. H. Kim, D. W. Ryoo, and C. Bae, *Adaptive noise cancellation using accelerometers for the PPG signal from forehead*, Proc. 29th Annu. Int. Conf. IEEE Eng. Med. Biol. Soc. (EMBS), Aug. 2007, pp. 2564–2567.
- [34] Y. Zhang, B. Liu, and Z. Zhang, *Combining ensemble empirical mode decomposition with spectrum subtraction technique for heart rate monitoring using wrist-type photoplethysmography*, Biomed. Signal Process. Control, vol. 21, pp. 119–125, Aug. 2015.
- [35] Biao Sun and Zhilin Zhang, Senior Member, IEEE, *Photoplethysmography-Based Heart Rate Monitoring Using Asymmetric Least Squares Spectrum Subtraction and Bayesian Decision Theory*, IEEE Sensors Journal, Vol. 15, No. 12, December 2015.
- [36] N. Golyandina, V. Nekrutkin, and A. A. Zhigljavsky, *Analysis of time series structure: SSA and related techniques*, CRC Press, 2001.
- [37] I. F. Gorodnitsky and B. D. Rao, *Sparse signal reconstruction from limited data using FOCUSS: a re-weighted minimum norm algorithm*, IEEE Trans. on Signal Processing, vol. 45, no. 3, pp. 600–616, 1997.
- [38] Z. Zhang, Z. Pi, and B. Liu, *TROIKA: A general framework for heart rate monitoring using wrist-type photoplethysmographic signals during intensive physical exercise*, IEEE Trans. Biomed. Eng., vol. 62, no. 2, pp. 522–531, Feb. 2015.
- [39] Xiaorong Zhang, Quan Ding, *Respiratory rate estimation from the photoplethysmogram via joint sparse signal reconstruction and spectra fusion*, Biomedical Signal Processing and Control 35 (2017) 1–7.



**Impact Factor:
7.569**



INTERNATIONAL JOURNAL OF INNOVATIVE RESEARCH

IN SCIENCE | ENGINEERING | TECHNOLOGY

 9940 572 462  6381 907 438  ijirset@gmail.com



www.ijirset.com

Scan to save the contact details