



e-ISSN: 2319-8753 | p-ISSN: 2347-6710

IJIRSET

International Journal of Innovative Research in
SCIENCE | ENGINEERING | TECHNOLOGY



INTERNATIONAL JOURNAL OF INNOVATIVE RESEARCH

IN SCIENCE | ENGINEERING | TECHNOLOGY

Volume 11, Issue 2, February 2022

ISSN INTERNATIONAL
STANDARD
SERIAL
NUMBER
INDIA

Impact Factor: 7.569



9940 572 462



6381 907 438



ijirset@gmail.com



www.ijirset.com

Optimization of Process factors in Drilling Process of Hybrid AMMCs Reinforced with Magnesium and Boron Carbide

Chandrakant K. Vhare ¹, Prof. Dr. K. D. Sapate ²

PG Student, Department of Mechanical, Alard College of Engineering and Management, Hinjewadi, Pune, India¹

Associate Professor, Department of Mechanical, Alard College of Engineering and Management, Hinjewadi, Pune, India²

ABSTRACT: In the current study, presentation characteristics were intended and optimized with grey relational study in drilling of B₄C and Mg reinforced mixture of aluminium metal medium composites (AMMCs) produced by powder metallurgy. HSS, TiAlN coated and uncoated cementite carbide drills bits were employed under dry cutting circumstances. The drilling limits such as feed rate, spindle speed, drill material and material parameters like wt. % of B₄C as well as Mg particles were optimized based on multiple performance characteristics including thrust force, torque and surface roughness. Tests were performed on a computerised numerically controlled vertical machining centre. Drilling tool dynamometer is used to gauge the thrust force and drilling torque. Also, to determine the surface unevenness of drilled hole portable surface roughness tester is used which shows the readings in microns. Microstructure of composites and surface morphology of drilled hole is deliberated by using optical microscopy. Finally, it is concluded that, among the tools used, TiAlN coated carbide drill bit shows the improved results than other drill bits used. Composites manufactured in current learning shows better power for all levels of reinforcement. Also, it is established that the drilling feed rate affects on the drilling process significantly.

KEYWORDS: Powder metallurgy, B₄C and Mg, Drill tool dynamometer, Optimization, hybrid AMMCs, Microstructure.

I. INTRODUCTION

Composites are extensively used more willingly than conservative materials because of their better properties. Al is most abundant metal in earth's crust. Aluminium acquires about 8% by weight of Earth's solid surface. Al is widely used due to its availability, low cost, high strength to weight ratio, due to enhanced machinability, durability, ductility and malleability. Further, Aluminium based Metal Matrix composites (MMC) have received increasing attention in recent decades as engineering materials due to their enhanced high strength to weight ratio, good mechanical properties, good corrosion resistance, enhanced thermal conductivity, better machinability and recyclability. It is mainly recognized for suitable wear resistance application over conventional Al alloy. It is one of the most prospective matrix metals for the production of composites [1, 2].

Composite materials are consistently increasing importance due to its unique properties and advantages over conventional material. Particulate metal matrix composites are used now days in automobile and aerospace industries. Researchers are working on low cost reinforcement materials for reducing the cost of composite material. The hybrid composites have proved better mechanical and wear resistance properties. The use of hybrid reinforcement in metal matrix is also useful for cost reduction. The machining of composite is always critical task and it affects on performance of material. In present study, Composite materials containing aluminium (Al) as matrix and Manganese (Mg) as well as Boron Carbide (B₄C) hybrid mixture is used as reinforcement material.

Also, B₄C and Mg are used in today's days for production of MMC because of their inherent mechanical and chemical properties [3, 4]. Today researchers are focusing on B₄C because of their low density (2.51 g/cm³); high stiffness (445 GPa); high melting point (2450 °C); high hardness (3800–4200 Hv) and good thermal stability [4,5] and on Mg because of their low cost, easily available, lower co-efficient of friction, elastic and incompressible, high electrical resistance and low temperature coefficient, Melting Point (650 °C), highly tough, having high tensile strength, elastic, and along with being flexible. It has immense compression power and can be machined, die-punched, or hand cut.

Also, Mg is a natural occurring mineral and the best part is Mg can resist nearly all mediums like chemicals, acids, gasses, alkalis, and oils. The mechanical properties shown by metal matrix composites (MMCs), such as specific modulus and strength make them attractive for application in the aerospace and automotive sectors [6,15]. Aluminium and its alloys have most attention, as a matrix material for MMCs [7,16].

Various production methods are used for production of MMC such as Powder Metallurgy (PM), infiltration, stir casting etc. PM has some important advantages such as simplicity; cheap processing and its ability to produce near net shape products [8]. The machining processes are carried after manufacturing of composites. Drilling is one such process which is carried out in order to calculate responses of material [9]. Tool material, tool geometry, and cutting parameters affects on drilling performance. The tools used for drilling process are HSS tool, uncoated carbide tool, TiAlN coated carbide tool, etc. Ahmet and Kenan worked on drilling performance of Al- B₄C composite manufactured by PM method and found that TiAlN coated carbide tool shows the best performance with regards to the surface roughness [4]. Tool geometry and cutting parameters are the most important factors which determine the quality of machining process. Recently machining of composite mainly focused on drilling process [10]. The presence of hard ceramic particles in the composites makes them extremely difficult to machine as they lead to rapid tool wear [11].

The grey relational analysis is a method used to optimize the process parameters, since it is a valuable methodology for the design of qualitative and discrete parameters [12]. Grey relational analysis is carried by researchers to identify the influential parameter in drilling process like feed rate and spindle speed. The purpose of grey analysis in literature has been found to reveal the optimal combination of the drilling parameters that obtained the minimum tool wear [13]. Also, In case of MMC literature study shows that surface roughness of drilled hole depends on cutting speed and feed rate [14]. Literature study also shows that the feed rate is influencing parameter from surface roughness point of view [4].

In present study, drilling process is carried on Mg - B₄C hybrid reinforced Al matrix composite manufactured by PM method. Further, the grey relational analysis is used to determine optimum drilling conditions on multi- performance characteristics such as thrust force, torque and surface roughness quality. The drilling parameters are set by Taguchi experimental design method. The thrust force, drilling torque and surface roughness after the drilling experiments with HSS, TiAlN coated and uncoated carbide drills are investigated Fig.1 shows that flow path of the study, which were followed in this study.

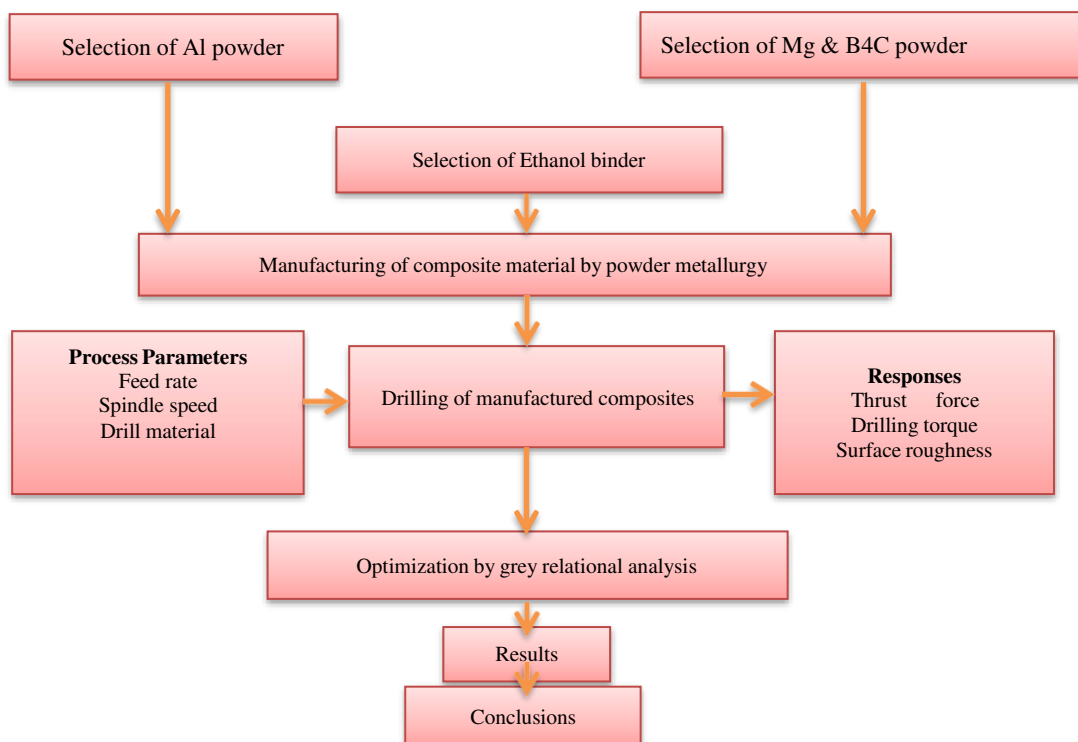


Fig. 1. Flow path of the study.



II. EXPERIMENTAL

2.1. Material selection

The materials used for fabrication of composites are of four types, i.e. Zinc, pure aluminium, Mg, and B₄C. Zinc has ability to improve the bonding between two molecules. Also, Zinc has melting temperature lower than other metals hence it helps to fill the voids between metal and ceramic powders. Aluminium with particle size of 40 micron (μ) and Mg, B₄C with 45 μ , 40 μ respectively sizes are used in the present study.

2.2. Composite production

In this work, composites are produced with 10%, 20% and 30% wt. % of Mg and B₄C reinforcement in pure Al along with Zn and ethanol by using powder metallurgy route in circular dimensions of $\phi 40 \times 12$ mm. This method was similar to the fabrication route used by previous researchers [4]. Further, to achieve these powders of aluminium, Mg, B₄C and Zinc with above mentioned grain size were weighed with Symmetry EC4000 electronic balance having 0.1 gm accuracy and then uniformly mixed in a mixing bowl. The ball milling method, having 36 zirconium balls, for mixing of the powders was used. After filling that mixture in die, it was cold pressed using Universal testing machine until that achieve the 12 mm of thickness, approximately load applied was 275 KN. Later, in order to fill the voids between metal and ceramic powders with zinc, the furnace temperature was kept 540⁰C and composite specimens were sintered for atwo hours. Finally, the mold was kept inside the furnace until 250⁰C furnace temperature and then placed in the open air to complete the cooling. Hardness and Compression tests were performed.

2.3. Drill tool selection

In order to drill the manufactured composites, total three tool materials are selected like HSS, Uncoated cementide carbide tool and TiAlN coated cementide carbide tool. Selected drill tool specifications are shown in table 1.

Table 1. Drill bit type and specifications.

| | |
|----------------------|---|
| HSS | $\phi 8$ mm, 135 ⁰ tool tip angle, spiral, 30 ⁰ Helical angle |
| Uncoated Carbide | $\phi 8$ mm, 140 ⁰ tool tip angle, spiral, 30 ⁰ Helical angle |
| TiAlN Coated Carbide | $\phi 8$ mm, 140 ⁰ tool tip angle, spiral, 30 ⁰ Helical angle |

2.4. Drilling of composite on VMC

In this work, for drilling of manufactured composites vertical machining center (VMC), Hytech MT-250 is used. The drilling parameters and levels are presented in Table 2. Coating thickness of TiAlN coated tool and hardness of coating material were 5 μ m and 2800HV, respectively. Picture of the drilled composite is shown in fig. 2, while picture of the VMC machine is shown in fig.3.

Table 2. Drilling parameters and levels

| Control Factors | Symbols | Units | 1 | 2 | 3 |
|------------------------------|---------|---------|--------------|----------------------------|--------------------------------|
| Wt.% Mica & B ₄ C | A | % | 10 | 20 | 30 |
| Feed rate | B | mm/rev | 0.1 | 0.2 | 0.3 |
| Spindle speed | C | rev/min | 1000 | 1500 | 2000 |
| Drill material | D | Hv | HSS (800) | Uncoated Carbide (1500) | TiAlN Coated Carbide (2800) |



.Fig. 2.Drilled Specimen.

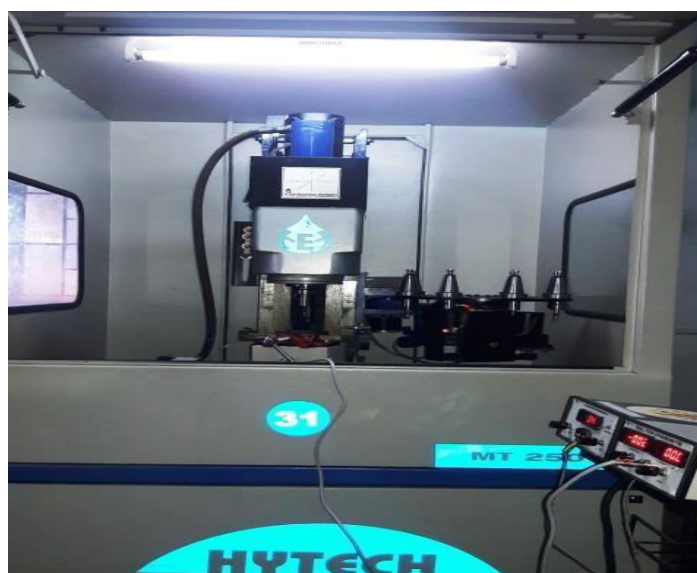


Fig. 3.Drilling setup

2.5. Measurement of responses

While drilling of the manufactured composites on VMC machine with selected drilling parameters and levels, the thrust force and torque are measured by using drill tool dynamometer. Pictured of the drill tool dynamometer is shown in Fig.4. After drilling process has completed, Surface roughness was measured at four different locations by using Mitutoyo SJ-210 measuring instrument. Picture of the Surface roughness tester is shown in fig. 5. In order to obtain optimum surface roughness values of the drilled holes, the hole length should be smaller than 3 times the drill diameter [4]. So, the drill bit diameter of 8 mm and hole length of 12 mm were selected. The surface roughness of the drilled composites was measured and average of four surface roughness values was used for reading.



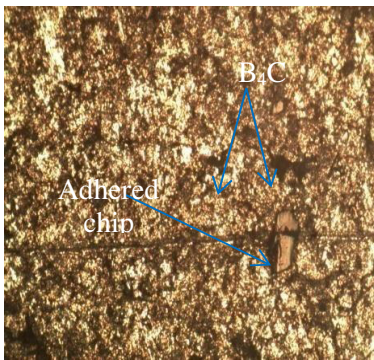
Fig. 4. Drill tool dynamometer.



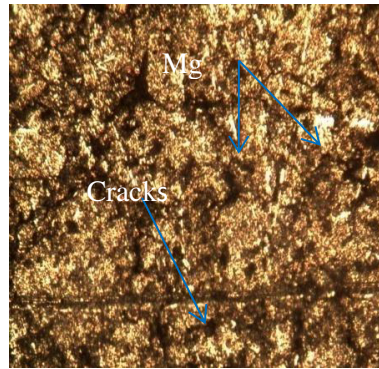
Fig.5. Surface roughness tester.

III. RESULTS AND DISCUSSION

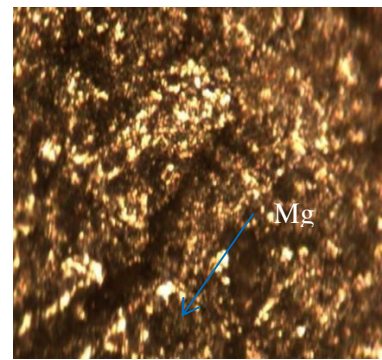
3.1. Microstructure



(a) Al- 5% B4C & 5% Mg



(b) Al- 10% B4C & 10% Mg



(c) Al- 15% B4C & 15% Mg

Fig.6. Microstructure of Al-Mg-B4C hybrid composites.

Microstructures of Al-Mg-B4C hybrid composites were checked using optical microscope at different levels of reinforcement which are shown in fig.6 (a), (b) and (c). Optical microscopes with camera attachment were used to capture the images of surface structure. A homogeneous distribution of reinforcement practical over the composites can be seen from the figure. In above images particle content of B4C and Mg is also shown with adhered chip and cracks.

3.2 Drilling forces and surface roughness

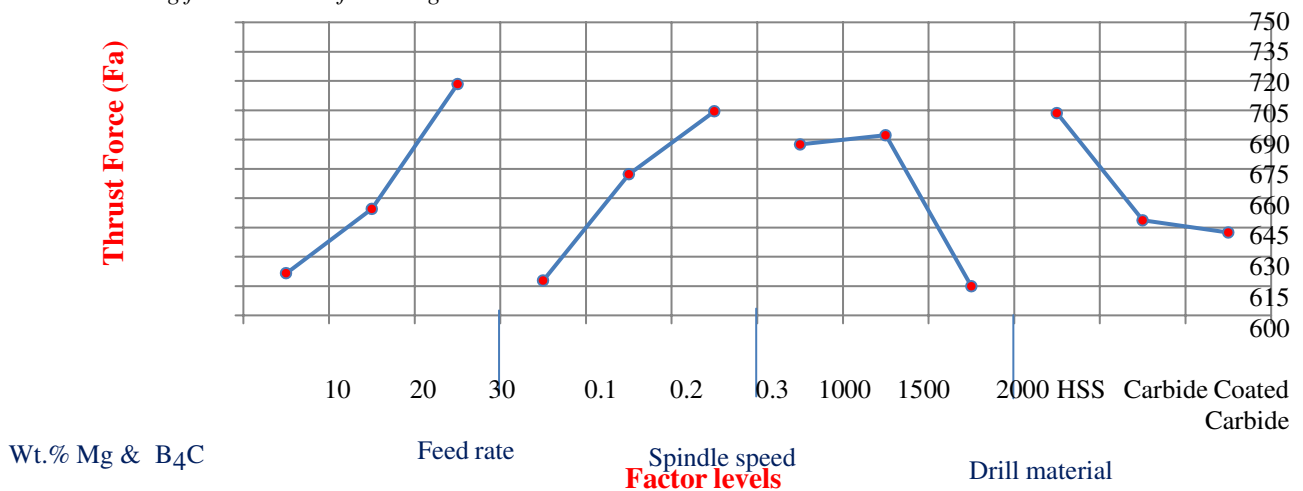


Fig.7. Effect of process parameters on the thrust force (Fa)

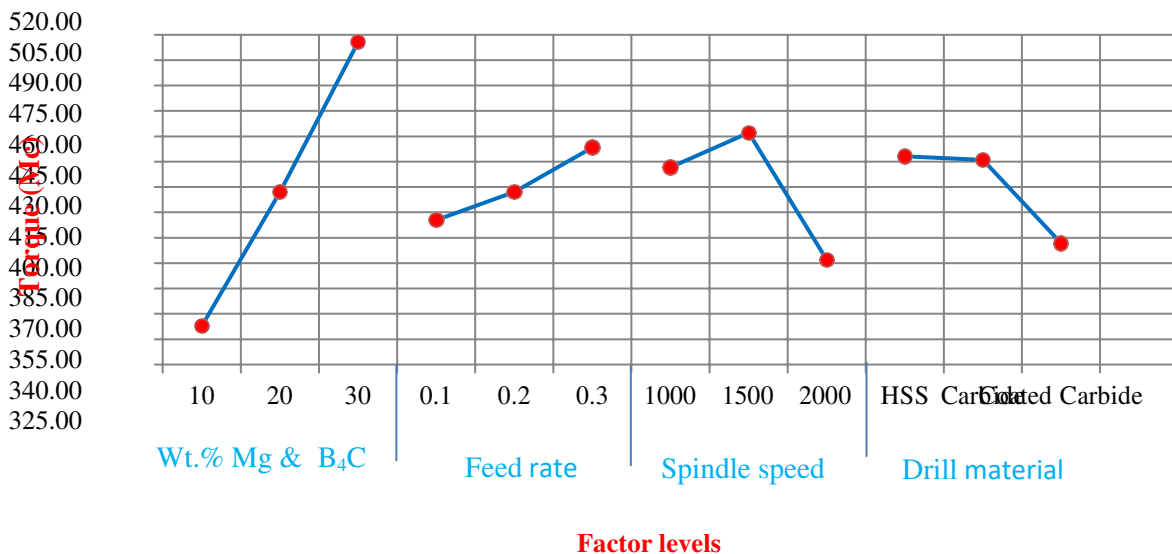


Fig.8. Effect of process parameters on the Drilling torque (Mc)

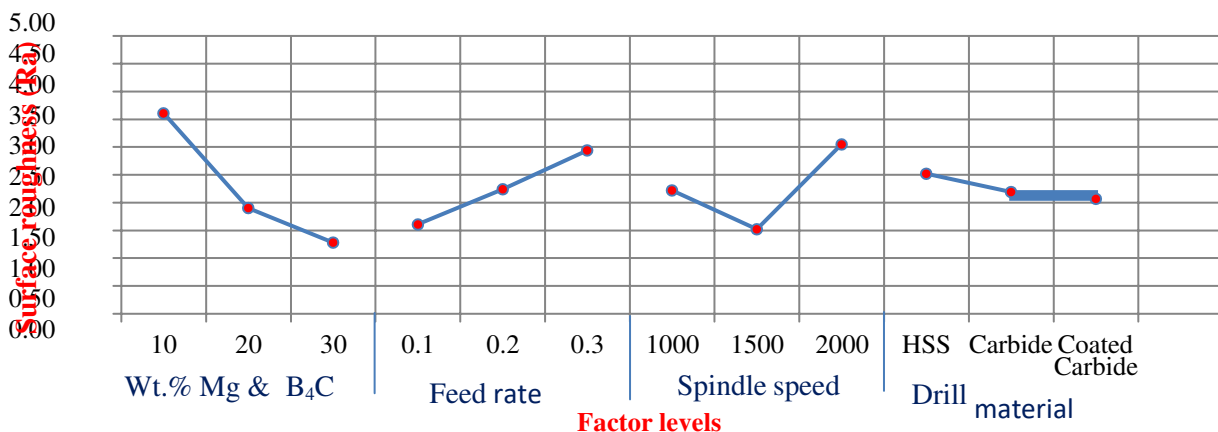


Fig.9. Effect of process parameters on the Surface roughness (Ra)

Experiments conducted on VMC, shows that the influence of the process parameters such as Wt.% of Mg and B₄C, spindle speed, feed rate and drill material on the thrust force and drilling torque is shown in Fig.7 and Fig. 8 respectively. According to Fig.7 and Fig. 8 as Wt.% of Mg and B₄C increases thrust force and drilling torque both are increases. Also, as feed rate increases thrust force and torque increases. While using TiAlN coated carbide drill bit there is drastically decrease in thrust force and drilling torque. But, in case of surface roughness this results are different. As Wt. % of Mg and B₄C increases surface roughness decreases, while surface roughness increases in increasing feed rate.

3.3 Optimization by grey relational analysis

The optimization of Process parameters considering multiple performance characteristics of the drilling process for Al-Mg-B₄C hybrid composites using the GRA is presented. Performance characteristics including thrust force, torque and surface roughness are chosen to evaluate the effects of process parameters while machining on VMC. Experiments based on the appropriate L9 Orthogonal array (OA) are conducted first. The normalized experimental results of the performance characteristics are then introduced to calculate the coefficient and grades according to GRA. The experimentally obtained values of thrust force, torque and surface roughness are also presented in Table 3. In this section, the use of the OA with the GRA for determining the optimal machining parameters is reported step by step.

Table 3. Experimental layout using an L9 OA and Experimental results

| Exp.No. | Factors | | | | Experimental Results | | |
|---------|---------|---|---|---|----------------------|----------|--------------|
| | A | B | C | D | Fa(N) | Mc(N cm) | Ra(μ m) |
| 1 | 1 | 1 | 1 | 1 | 635.84 | 357.3 | 3.172 |
| 2 | 1 | 2 | 2 | 2 | 640.04 | 392.4 | 2.769 |
| 3 | 1 | 3 | 3 | 3 | 588.6 | 294.3 | 4.887 |
| 4 | 2 | 1 | 2 | 3 | 612.46 | 405.7 | 0.312 |
| 5 | 2 | 2 | 3 | 1 | 650.52 | 398.4 | 2.926 |
| 6 | 2 | 3 | 1 | 2 | 700.56 | 477.5 | 2.463 |
| 7 | 3 | 1 | 3 | 2 | 605.27 | 468.5 | 1.346 |
| 8 | 3 | 2 | 1 | 3 | 725.94 | 490.5 | 1.024 |
| 9 | 3 | 3 | 2 | 1 | 824.04 | 588.6 | 1.478 |

In GRA, data pre-processing is required since the range and unit in one data sequence may differ from the others. For this purpose, the experimental results are normalized in the range between zero and one, and these are presented in table

1. To obtain optimal drilling performance, the “smaller-the-better” quality characteristic has been used for minimizing the thrust force, torque and surface roughness. The Eq. (1) has been used to normalize the values between zero and one.

Similarly the remaining calculations are also made and all the sequences after data pre-processing using Eq. (1) are presented in Table 4.

Table 4. The sequences of each performance characteristic after data processing

| Exp.No. | Normalization | | |
|--------------------|---------------|-------|-------|
| | Fa | Mc | Ra |
| Reference Sequence | 1.000 | 1.000 | 1.000 |
| 1 | 0.799 | 0.786 | 0.375 |
| 2 | 0.782 | 0.667 | 0.463 |
| 3 | 1.000 | 1.000 | 0.000 |
| 4 | 0.899 | 0.621 | 1.000 |
| 5 | 0.737 | 0.646 | 0.429 |
| 6 | 0.524 | 0.378 | 0.530 |
| 7 | 0.929 | 0.408 | 0.774 |
| 8 | 0.417 | 0.333 | 0.844 |
| 9 | 0.000 | 0.000 | 0.745 |

Now, $\Delta_0(K)$ is the deviation sequence of the reference sequence $X^*(K)$ and the comparability sequence $X(K)$, i.e.

i

$$\Delta_0(K) = |X^*(K) - X(K)| \quad (2)$$



The deviation sequence $\Delta_0(K)$ can be calculated using Eq. 2 as follows;

$$\Delta_0(1) = |X^*(1) - X^*(1)| = |1 - 0.799| = 0.201, \quad \Delta_{0i}(2) = |X^*(2) - X^*(2)| = |1 - 0.786| = 0.214$$

0

 i

0

 i

$$\Delta_{0i}(3) = |X^*(3) - X^*(3)| = |1 - 0.375| = 0.625$$

0

 i

So, for experiment no.1, $\Delta_{0i} = (0.201, 0.214, 0.625)$

Similar calculation is performed for $i=1$ to 9 and the results of all for $i=1$ to 9 are presented in Table 5.

$\Delta_{\max}(K)$ and $\Delta_{\min}(K)$ are obtained and are as follow:

$$\Delta_{\max} = \Delta_{01}(1) = \Delta_{01}(2) = \Delta_{09}(3) = 1.00 \text{ \& } \Delta_{\min} = \Delta_{03}(1) = \Delta_{03}(2) = \Delta_{04}(3) = 0.00$$

Table 5. The deviation sequences

| Exp.No. | Deviation sequences | | |
|---------|---------------------|------------------|------------------|
| | $\Delta_{0i}(1)$ | $\Delta_{0i}(2)$ | $\Delta_{0i}(3)$ |
| 1 | 0.201 | 0.214 | 0.625 |
| 2 | 0.218 | 0.333 | 0.537 |
| 3 | 0.000 | 0.000 | 1.000 |
| 4 | 0.101 | 0.379 | 0.000 |
| 5 | 0.263 | 0.354 | 0.571 |
| 6 | 0.476 | 0.622 | 0.470 |
| 7 | 0.071 | 0.592 | 0.226 |
| 8 | 0.583 | 0.667 | 0.156 |
| 9 | 1.000 | 1.000 | 0.255 |

After data pre-processing is carried out, a grey relational coefficient can be calculated with the pre-processed sequence. It expresses the relationship between the ideal and actual normalized experimental results. ζ is distinguishing or identification coefficient. If all the parameters are given equal preference, ζ is taken as 0.5. The grey relational coefficients are calculated by Eq. (3) as follows:

$$\xi_i(K) = \frac{\Delta_{min} + \zeta \Delta_{max}}{\Delta_0(K) + \zeta \Delta_{max}} \quad (3)$$

$$\xi_i(K) = \frac{0.5}{0.201 + (0.5 \times 1)} = \frac{0.5}{0.701} = 0.714$$

Grey relational grades are calculated by Eq. (4) as follows, and all values are prescribed in Table 6.

$$\gamma_i = \frac{1}{3} ((1) + (2) + \xi_i(3)) \quad (4)$$

$$\gamma_i = \frac{1}{3} (0.714 + 0.700 + 0.444) = 0.619$$

Table 6. The calculated grey relational grade and its rank in the optimization process

| Exp.No. | Grey relational coefficient | | | Grey relational grade | Rank |
|---------|-----------------------------|------------------|------------------|-----------------------|------|
| | Fa $\xi_i(1)$ | Mc $\xi_i(2)$ | Ra $\xi_i(3)$ | | |
| 1 | 0.714 | 0.700 | 0.444 | 0.619 | 4 |
| 2 | 0.696 | 0.600 | 0.482 | 0.593 | 5 |
| 3 | 1.000 | 1.000 | 0.333 | 0.778 | 2 |
| 4 | 0.831 | 0.569 | 1.000 | 0.800 | 1 |
| 5 | 0.655 | 0.586 | 0.467 | 0.569 | 6 |
| 6 | 0.513 | 0.445 | 0.515 | 0.491 | 8 |
| 7 | 0.876 | 0.458 | 0.689 | 0.674 | 3 |
| 8 | 0.462 | 0.429 | 0.763 | 0.551 | 7 |
| 9 | 0.333 | 0.333 | 0.662 | 0.443 | 9 |

$$\gamma_i = \frac{1}{3} ((1) + (2) + \xi_i(3))$$

The overall evaluation of the multiple performance characteristics is based on the grey relational grade, that is:

$$\gamma_i = \frac{1}{n} \sum_{k=1}^n \xi_i(K)$$

The higher grey relational grade represents that the corresponding experimental result is closer to the ideally normalized value. Experiment 4 has the best multiple performance characteristics among nine experiments because it has the highest grey relational grade. Since the experimental design is orthogonal, it is then possible to separate out the effect of each machining parameter on the grey relational grade at different levels. The mean of the grey relational grade for each level of the machining parameters is summarized and shown in Table 6. In addition, the total mean of the grey relational grade for the nine experiments is also calculated and presented in Table 6.

Table 6. Response table for the grey relational grade

| Grey relational grade Symbol | Machining Parameters | Level 1 | Level 2 | Level 3 | Main effect (max-min) | Rank |
|---------------------------------|----------------------------|---------|---------|---------|-----------------------|------|
| A | Wt.% Mg & B ₄ C | 0.663* | 0.620 | 0.556 | 0.107 | 4 |
| B | Feed rate | 0.698* | 0.571 | 0.571 | 0.127 | 2 |
| C | Spindle speed | 0.554 | 0.612 | 0.674* | 0.120 | 3 |
| D | Drill material | 0.544 | 0.586 | 0.710* | 0.166 | 1 |

Total mean value of the grey relational grade $\gamma_m = 0.6132$

* Levels for optimum grey relational grade

Fig.10.shows the grey relational grade obtained for different parameters. The mean of grey relational grade for each parameter is shown by horizontal line. Basically, the larger the grey relation grade is, the closer will be the product quality to the ideal value. Thus, larger grey relational grade is desired for optimum performance. Therefore, the optimal parameters setting for lesser thrust force, torque and surface roughness are (A1B1C3D3) as presented in Table 6. Optimal level of the process parameters is the level with the highest grey relational grade.

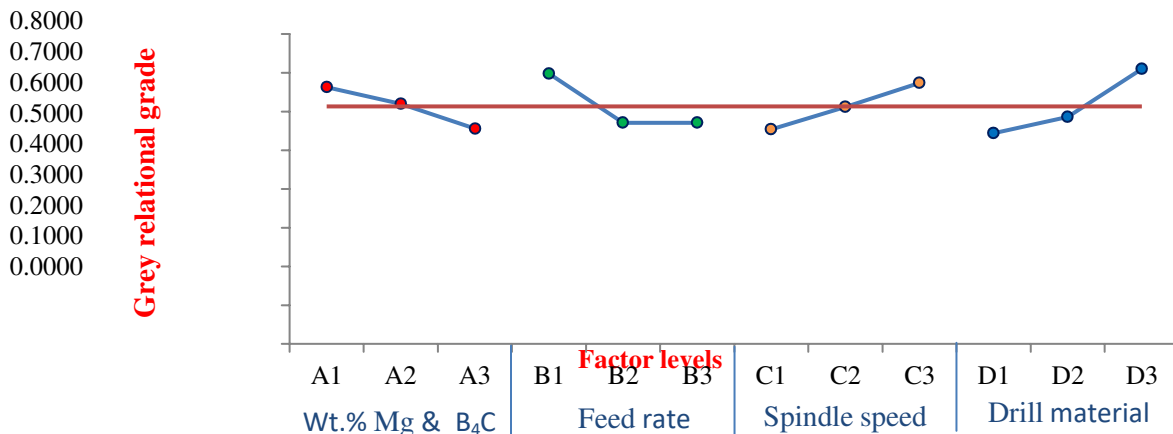


Fig. 10. Effect of EDM parameters on the multi-performance characteristics

IV. CONCLUSION

In this work, drilling experiments were performed to study the effects of drilling process parameters such as reinforcement percentage, feed rate, spindle speed and drill material on thrust force, drilling torque and surface roughness. According to the experimental result carried out following conclusions are given below.

1. From the experimental results, as the reinforcement percentage and feed rate increases thrust force and drilling torque increases.
2. Surface roughness drilled hole decreases as reinforcement percentage increases, while as feed rate increases, surface roughness also increases, while the results of surface roughness are excellent by using TiAlN coated carbide drill bit.
3. From the grey relational analysis, the best levels of Wt.% of Mg and B₄C was 10% reinforcement, feed rate was 0.1, spindle speed was 2000 and drill bit was TiAlN coated carbide tool because they gives the higher grey relational grade.

ACKNOWLEDGMENTS

The author of this study thanks to Prof. Dr. K. D. Sapate for guiding and supporting to carry out this work.



REFERENCES

1. A.R. Ahamed, P. Asokan, S. Aravindan, M.K. Prakash, Drilling of hybrid Al-5%SiCp-5% B4Cp metal matrix composites, *International Journal of Advanced Manufacturing Technology* 49 (2010) 871–877.
2. C.R. Dandekar, Y.C. Shin, Modelling of machining of composite materials: a review, *International Journal of Machine Tools and Manufacture* 57(2012) 102–121.
3. T. Rajmohan, K. Palanikumar, M. Kathirvel, Optimization of machining parameters in drilling hybrid aluminium metal matrix composites, *Trans. Nonferrous Met. Soc. China* 22 (2012) 1286–1297.
4. Ahmet Taskesen, Kenan Kutukde, Experimental investigation and multi-objective analysis on drilling of boron carbide reinforced metal matrix composites using grey relational analysis, *Measurement* 47(2013) 321–330.
5. M. Emamy, H. Abdizadeh, H.R. Lashgari, A.A. Najimi, The effect of Sr and grain refining elements on the microstructure and tensile properties of A356–10% B4C metal matrix composite, *Mechanics of Advanced Materials and Structures* 18 (2011) 210–217.
6. S. G. Kulkarni, J.V. Menghani, Achchhe Lal, Numerical investigation of clustering effect on the uniaxial stress strain behaviour of A356 matrix composite, *Materials Today: Proceedings* 4 (2017) 3072–3081.
7. S. G. Kulkarni, J.V. Menghani, Achchhe Lal, Effect of Fly Ash Hybrid Reinforcement on Mechanical Property and Density of Aluminium 356 Alloy, *Procedia Materials Science Volume* 5 (2014) 746–754.
8. M. Rahimian, N. Parvin, N. Ehsani, The effect of production parameters on microstructure and wear resistance of powder metallurgy Al–Al₂O₃ composite, *Materials and Design* 32(2011) 1031–1038.
9. G.S. Samy, S.T. Kumaran, Measurement and analysis of temperature, thrust force and surface roughness in drilling of AA (6351)-B4C composite, *Measurement* (2017), doi: <http://dx.doi.org/10.1016/j.measurement.2017.02.016>
10. K.T. Akhil, K. Shunmugesh, S. Aravind, M. Pramodkumar, Optimization of Drilling Characteristics using Grey Relational Analysis (GRA) in Glass Fiber Reinforced Polymer (GFRP), *Materials Today: Proceedings* 4 (2017) 1812–1819.
11. S. Basavarajappaa, G. Chandramohanb, J. Paulo Davim, Some studies on drilling of hybrid metal matrix composites based on Taguchi techniques, *Journal of materials processing technology* 196 (2008) 332–338.
12. C. L. Lin, Use of the Taguchi Method and Grey Relational Analysis to Optimize Turning Operations with Multiple Performance Characteristics, *Materials and Manufacturing Processes*, 19:2, (2007) 209–220.
13. Taskesen, K. Kutukde, Analysis and optimization of drilling parameters for tool wear and hole dimensional accuracy in B4C reinforced Al-alloy, *Trans. Nonferrous Met. Soc. China* 23 (2013) 2524–2536.
14. Y. Altunpak, M. Ay, S. Aslan, Drilling of a hybrid Al/SiC/Gr metal matrix composites, *International Journal of Advanced Manufacturing Technology* 60 (2012) 513–517.
15. S. G. Kulkarni, J.V. Menghani, Achchhe Lal, Investigation of mechanical properties of fly ash and Al₂O₃ reinforced A356 alloy matrix hybrid composite manufactured by improved stir casting, *Indian journal of Engineering & Material science*, Vol.23 (2016) 27– 36.
16. S. G. Kulkarni, J.V. Menghani, Achchhe Lal, Effect of reinforcement type and porosity on strength of metal matrix composite, *International Journal of Computational Materials Science and Engineering*, 05(2016).



**Impact Factor:
7.569**



INTERNATIONAL JOURNAL OF INNOVATIVE RESEARCH

IN SCIENCE | ENGINEERING | TECHNOLOGY

 **9940 572 462**  **6381 907 438**  **ijirset@gmail.com**



www.ijirset.com

Scan to save the contact details