



e-ISSN: 2319-8753 | p-ISSN: 2347-6710

IJIRSET

International Journal of Innovative Research in
SCIENCE | ENGINEERING | TECHNOLOGY



INTERNATIONAL JOURNAL OF INNOVATIVE RESEARCH

IN SCIENCE | ENGINEERING | TECHNOLOGY

Volume 11, Issue 1, January 2022

ISSN INTERNATIONAL
STANDARD
SERIAL
NUMBER
INDIA

Impact Factor: 7.569

9940 572 462

6381 907 438

ijirset@gmail.com

www.ijirset.com



Sentiment Analysis with Deep Learning of IMDB Movie Reviews

Raj Mohite¹, Usha Taware², Dipali Patil³, Rachana Gaikwad⁴, S.S.Adagale⁵

U.G. Student, Department of Computer Engineering, TAE Engineering College, Pune, India^{1,2,3,4}

Associate Professor, Department of Computer Engineering, TAE Engineering College Pune, India⁵

ABSTRACT: The sentimental analysis is the concept of predicting the behavioral of the human emotions, views and opinions from the different organized, semi organized information. Now days because of vigorous use of internet, peoples around the world come together and they are highly passionate towards expressing their emotions, opinions on the social media. Because of the social media most of the industries and organization formulate their decisions from the customer reviews available on web. Due to the advancement in text data processing, sentiment analysis has turned into a significant research direction in Natural language processing (NLP). Now a day's, the popularity of the machine learning tools it is easy to contributes to enhancements in existing sentiment analysis techniques. With the help of LSTM and CNN deep learning technique we can perform Analysis or detection of movie review. In Deep Learning method CNN is used for feature learning and LSTM is used for Adapting long term conditions. These two deep learning methods are used for classifying IMDB movie review. 1) Hybrid LSTM- CNN. 2) Hybrid CNN-LSTM.

KEYWORDS: CNN, Deep Learning, Machine Learning, LSTM, RNN

I. INTRODUCTION

Due to the increasing the population of the internet and technologies, to measurement of the data that is delivered by the peoples is improving Very fast per every year. The big data is nothing but the collection of large amount of datasets that cannot not proceed with the help of traditional computing techniques. To handle the large amount of information is not easy, so to improving this drawback it behavior analytics that sorted the valuable information the that huge data this is called big data analytics. In Deep learning it includes machine learning or Artificial intelligence. That included the way human gain certain types of knowledge. Sentimental analysis is the best method can be turned into a different techniques and frameworks. By using the prediction methods, peoples of data mining it are used for predicting the emotions, opinions, attitudes of the peoples. Sentiment analysis considered as a classification process in data mining. Sentimental analysis is one of the important techniques of natural language.

The main intension of this technique is to predict the emotions of the peoples, it can be structured or unstructured. This paper represents with the help of deep learning techniques like Convolutional Neural Network (CNN) and long short term memory (LSTM) to analyzing the movie reviews. we can also used two deep learning models to identify the IMDB movie review. 1) Hybrid LSTM- CNN . 2) Hybrid CNNLSTM .IMDB is based on the internet movie database, it provides large information about movies, television programs as well as movie casting. In sentiment analysis there is movie review rating and while ratings in the form of paragraphs, or in mathematical formats that are cast by the people in which IMDB users express their own emotions about the caste. User can either votes on movie or write a comments else do both.

II. RELATED WORK

1. HadiPouransari et al [5] In this paper, The dataset is given by kaggle and this dataset is connected with bag of words to arrange the words numerically. To predict the binary classification task some of classifiers are used such as random forest, SVM, and logistic regression. The authors facing one of the difficulties is to aggregate word vectors into a solitary element vector for each review.

2. Liu Yanmei et al [6] This paper is introduces for CNN With SVM classifier deep learning method. This paper represents the overall structure of sentiment analysis of emotional analysis deep leaning. this model is used for searching the sensible sentiment analysis.

3. Yaya Heryadiet[7] In this paper uses both the short and long term transaction method with the help of CNN and LSTM . The result of these actions show that CNN is stronger than SLSTM and CNN-LSTM.CNN –LSTM is considered as imbalanced dataset classifier with highly performance.

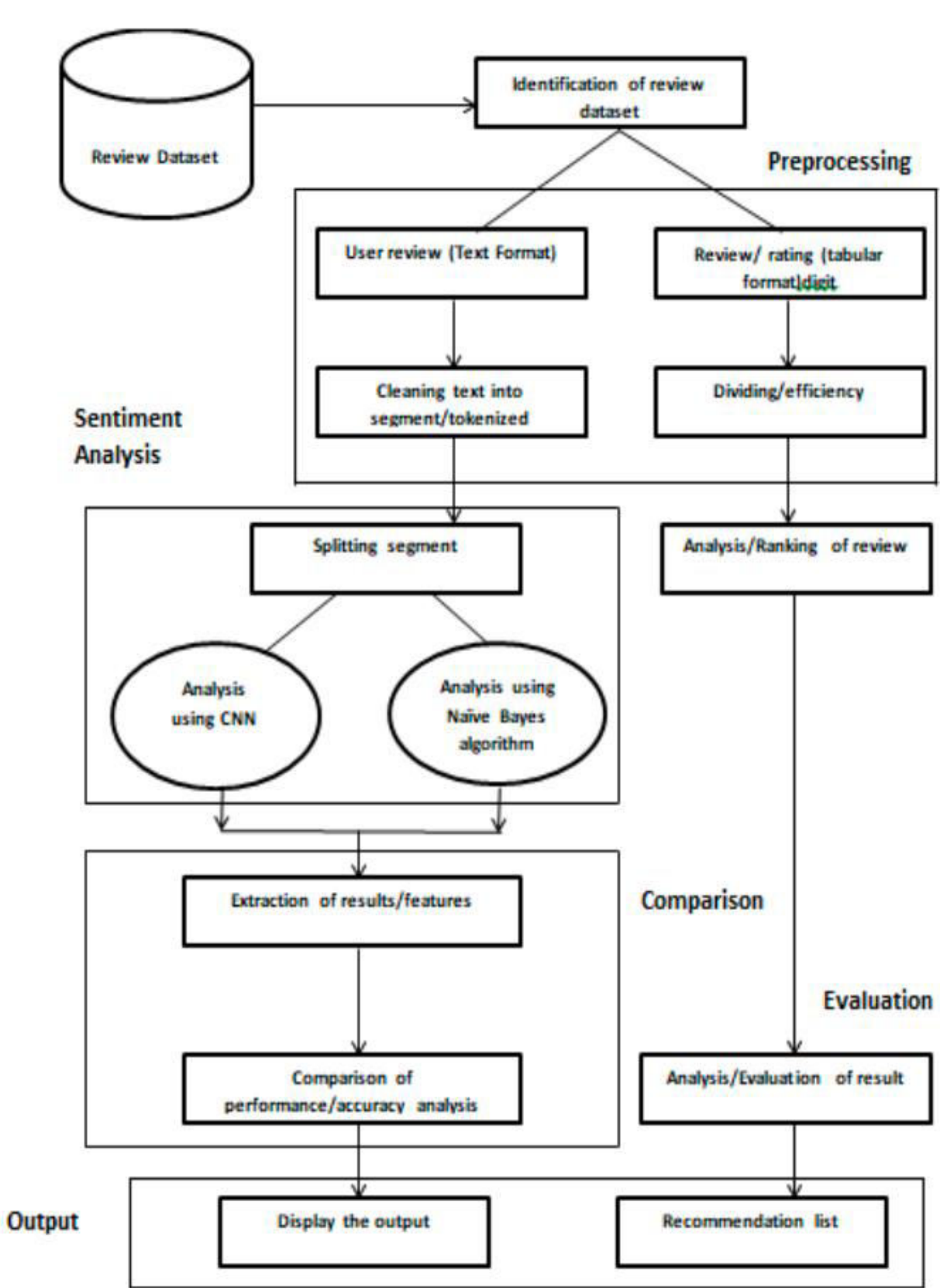


4. Alec Yenter et al [8] This paper represents both CNN and LSTM model. CNN is considered as a good feature learner but one of the disadvantages of CNN is it can't catch long term dependencies. To reduce disadvantage LSTM is introduced. The result of convolutional layer is given input to the LSTM because of this to improve the achieve new accuracy on the dataset.
5. Igor Santos, Nadia Nedjah [4] In this paper the main idea based on the vector representation of the word into the single block for use of the image. The main aim of this paper is with the convolutional network the large number of the design decision that are made prior. This model includes many of the hyper-parameter congesting the type of word embedding which are used for data vector representation
6. S. M. Vohra, J. B. Teraiya [3] In this paper is a which gives an idea of sentiment analysis along with the help of deep learning techniques used for sentiment analysis and different applications and challenges in this area.
7. Koyel Chakraborty*, Siddhartha Bhattacharyya [9] In this paper, the execution of a deep learning technique on Word2vec and the Doc2vec model. else, assorted classifiers can be used other than the one already stated above and can be judged if the optimum classifier can be found out for these types of purposes.
8. Tanushree Dholpuria, Chetan Agrawal [10] In this paper by using various learning methods it is easy for analysing the movie review. Deep learning methods like CNN and Naïve Bayes and SVM and logistic regression methods are used. To improving the classification model accuracy CNN classifier is used. This deep learning model is different from traditional machine learning model.
9. Atiqur Rahman, Md. Sharif Hossen [11] In this paper sentiment analysis is used for achieving the large amount of dataset and that can be sorting with the help of deep learning method like SVM naïve Bayes algorithm. With the help of this model it will be helpful for finding the expression of the people.
10. C. Zhang, W. Zuo, T. Peng [2] In this paper, they have proposed that sentiment analysis divided aims at mining reviews of a group for an main event's subject or result by immediately dividing their opinions /reviews into the positive and negative etc.
11. Savitha Mathapati, S H Manjula Venugopal K R [12] In these paper they are used a presence of internet, advent of web 2.0 has made a social media platforms are follows as facebook, twitter, instagram, blog etc. and these platforms are very useful effective and popular and the report of existing method of sentiment analysis and review techniques from social media.
12. Joshi and Penstein Rose [12] In these paper They had proposed deep learning techniques for our review /mining approach. and it has explored at which point features based on syntactic protectorate. and it can be utilized to recover performance on data mining.
13. Chae Won Park, Dae Ryong Seo [14] In these paper they have proposed that the users review about Artificial Intelligence from twitter data were collected and divide into opinions are positive, negative and neutral. And they analysed data through the sample test of Tweets.

III. METHODOLOGY

In this system we have used a database or dataset which contain the positive, negative or any sentimental form of emotions of IMDB movie reviews. We are going to implement this system using Anaconda (Python Distribution), numpy Library of Python and Matplotlib. Matplotlib is used to analyse the graph. Windows 10 is the Operating System. The system in which it is implemented is any 64 bit system with Intel Pentium CPU and 4 GB memory.

1. Dataset / Identification : As we know daily huge amount of data is generated from social media. Online movie platforms or apps also generate the data in form of comments, feedback, reviews and rating indifferent format. Such a dataset is used to perform Sentimental Analysis. Data can be in text format or tabular format. First we have to identify in which format the data is present. After Identification data can be considered in two formats. First the text format, data in form of words, sentence (comments) or feedback. And second, in form of digits, rating, number of views or likes (tabular format).
2. Pre-Processing: It is the important process to be performed before analysis. To improve the performance of our model we need to perform pre-processing steps. We have to perform data preparing steps on the dataset before providing it to deep learning model.
3. Cleaning of text data: Input provided to the system consists of text movie reviews. Text data basically comprised only English reviews and there is a blank space around punctuation like period, bracket and full stop. This text data need a cleaning that implies remove punctuation from words, evacuate tokens that are simply accentuation, expelling tokens that contain numbers. We have expelled punctuation, stop words, brackets numbers and also perform stemming by using regular expressions. If the data is in tabular format it need to maintain and labelled properly.





4. Tokenization / Segmentation:

After cleaning the dataset we have to perform tokenization with the help of tokenize API. It is the process of dividing the sentences in word and converting words into a unique integer. 12 Sentiment Analysis with Deep Learning of IMDB movie Reviews

5. Sentimental Analysis :

Here the pre-processed data from previous stage is use to analysis. Sentimental analysis is a kind of data mining process in which the inclination or opinions of the people are analysis to predict their emotions, views or sentiments. We are going to process this data using so method / algorithms written below :

1.Convolutional Neural Network (CNN).

2. Long Short Term Memory (LSTM).

3. Naive Bayes Algorithm. These are some data mining technique which we are going to for analysing the Sentiments of the people towards the movies or entertainments.

6. Extracting / Comparison:

Next result are extracted from the analysis. The results coming from any two different methods will be compared and their performance and accuracy will be checked. This will help us to know which method comes with better performance or accuracy. This analysis will also help us to predict future possibilities related to interest ,likes and dislikes of users/peoples.

7. Evaluation :

It is the step in which the results of tabular data and textual data will be evaluated to know the interests or views of peoples toward movies, contents in movies or particular platform on which the movies are streamed.

8. Output:

Output can be in the form of recommendation list or the graphical format. The graph will show the comparison and performance between the methods we used.

IV. MATHEMATICCAL MODEL

Input :- Movie m.

Classes $c = \{\text{Negative}, \text{Positive}\}$

Classifier $S: m \rightarrow c$

Model \rightarrow (using naive Bayes theorem).

$$p(c/m) = p(m/c) \cdot p(c)$$

$$p(c) = 0.5$$

$$p(c/m) = \frac{w \text{ count}(c)}{w \text{ count}(m)}$$

If $p(\text{pos} | m)$

$m = \text{positive}$

else

$m = \text{negative}$

V. CONCLUSION

In recent years deep learning methods provide better accuracy for sentiment classification compared with traditional method. Sentiment analysis plays an important roles in our daily decision making process. Our approach is to perform analysis of IMDB movie review dataset and achieved a better accuracy compared with other traditional models. By analyzing the data we can predict future more precisely and easily.

REFERENCES

- [1] A.M.Abirami and V.Gayathri "A Survey on Sentiment Analysis Methods and Approach" 2016 IEEE Eighth International Conference on Advanced Computing (ICoAC).
- [2] Qiongxia Huang, XianghanZheng, Riqing Chen, Riqing Chen "Deep Sentiment Representation Based on CNN and LSTM" International Conference on Green Informatics 2017.
- [3] S. M. Vohra, J. B. Teraiya "A Comparative Study of Sentiment Analysis Techniques" Journal of Information, Knowledge and Research in Computer Engineering, 2016.



- [4] Igor Santos, Nadia Nedjah, Luiza de Macedo Mourelle “Sentiment Analysis using Convolutional Neural Network with fast text embeddings” 2nd IEEE International Conference on Computational Intelligence and Applications 2017.
- [5] Hadi Pouransari, Saman Ghili “Deep learning for sentiment analysis of movie reviews” www.kaggle.com.
- [6] Liu Yanmei, Chen Yuda” Research on Chinese Microblog Sentiment Analysis Based on Deep Learning” 8th, IEEE International Symposium on Computational Intelligence and Design 2015 .
- [7] Yaya Heryadi, Harco Leslie Hendric Spits Warnars “Learning Temporal Representation of Transaction Amount for Fraudulent Transaction Recognition using CNN, Stacked LSTM, and CNN-LSTM” Journal of Electronics Vol.25, No.4, July 2016.
- [8] Alec Yenter, Abhishek Verma “Deep CNN-LSTM with Combined Kernels from Multiple Branches for IMDb Review Sentiment Analysis” IEEE International Conference on Computer Communication and the Internet 2017.
- [9] Aswathi Sajeevan, “A Survey on Review Analysis Using Deep Learning Techniques”, International Journal of Latest Engineering and Management Research (IJLEMR), Volume 4, Issue 2, February 2019.
- [10] Abdalraouf Hassan, Ausif Mahmood “Convolutional Recurrent Deep Learning Model for Sentence Classification” IEEE Access open access [11] Xiaobo Zhang, Qingsong Yu ” Hotel Reviews Sentiment Analysis Based on Word Vector Clustering” 2nd IEEE International Conference on Computational Intelligence and Applications 2017. 8.
- REFERENCES



**Impact Factor:
7.569**



INTERNATIONAL JOURNAL OF INNOVATIVE RESEARCH

IN SCIENCE | ENGINEERING | TECHNOLOGY

 9940 572 462  6381 907 438  ijirset@gmail.com



www.ijirset.com

Scan to save the contact details