



e-ISSN: 2319-8753 | p-ISSN: 2347-6710

IJIRSET

International Journal of Innovative Research in
SCIENCE | ENGINEERING | TECHNOLOGY



INTERNATIONAL JOURNAL OF INNOVATIVE RESEARCH

IN SCIENCE | ENGINEERING | TECHNOLOGY

Volume 11, Issue 7, July 2022

ISSN INTERNATIONAL
STANDARD
SERIAL
NUMBER
INDIA

Impact Factor: 8.118



9940 572 462



6381 907 438



ijirset@gmail.com



www.ijirset.com

Steam Boiler for Power Generation: Thermodynamic Modelling and Design

M.V.N. Pradeep¹, K. Gopal², V.Avinash³

Senior Technician, Thermal Power Plant, Rastriya Ispat Nigam Limited, Visakhapatnam, India

Senior Technician, Energy Management, Rastriya Ispat Nigam Limited, Visakhapatnam, India

Production Engineer, Dozco India Pvt Ltd, Visakhapatnam, Visakhapatnam, India

ABSTRACT: For the purposes of this report, PRO-E design software is used to simulate steam flow through boiler tubes. The thermal and CFD analyses at varying speeds (25, 30, 35, and 40m/s) will be the main focus of the thesis. Thermal analysis done for the steam boiler by steel, stainless steel & brass at different heat transfer coefficient values. These values are taken from CFD analysis at different velocities. In this thesis the CFD analysis to calculate the heat transfer coefficient, heat transfer rate, mass flow rate, pressure drop and thermal analysis to determine the temperature distribution, heat flux using different materials. 3D designed in parametric software Pro-Engineer and analysis done in ANSYS.

KEYWORDS: Finite element analysis, steamboiler, CFD analysis, thermal analysis.

I. INTRODUCTION

STEAM BOILER: Steam boilers heat water to produce steam, which is then used to generate energy or heat for other processes.

GENERAL INFORMATION

Boilers are used to generate steam that then provides heat or power. Water is converted to steam in the boiler. This steam travels through the heating apparatus which can be any piece of equipment that requires steam for operation. The cooled steam is then condensed into water and returns to the boiler to start the cycle again.

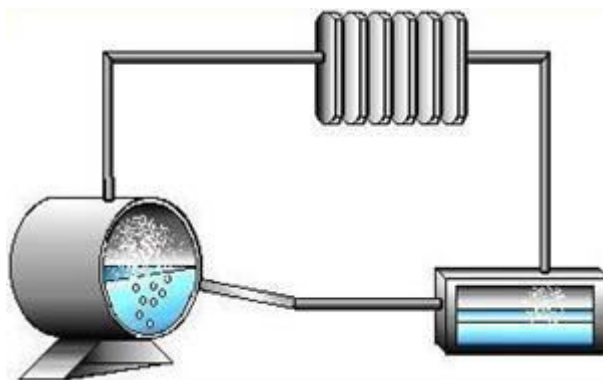


Fig1:BoilerDiagram

EQUIPMENT DESIGN

There are three main types of steam boilers: Fire tube, water tube, and cast iron.

In fire tube boilers, the combustion gases travel within the tubes to heat the surrounding water. In water tube boilers, on the other hand, the water travels inside the tubes and the heat on the outside, as shown above. The diagram below shows the components of a fire tube boiler.

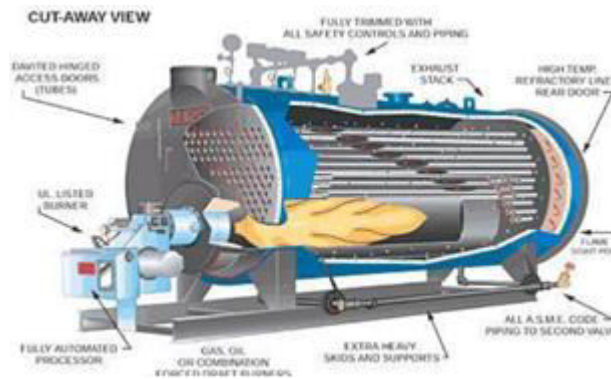


Fig2:FireTubeBoilerDiagram

II. LITERATUREREVIEW

Finite Element Analysis of Steam Boiler Used In Power Plants

A boiler or steam generator is a closed vessel used to generate steam by applying heat energy to water. During the process of generating steam, the steam boiler is subjected to huge thermal and structural loads. To obtain efficient operation of the power plant, it is necessary to design a structure to withstand these thermal and structural loads. Using CAD and CAE software is the advanced methodology of designing these structures before constructing a prototype. In this project finite element analysis of the steam boiler was carried out to validate the design for actual working conditions. The main tasks involved in the project are performing the 3D modelling of the boiler and finite element analysis. In this project, design optimization of the Boiler is also done based on the results obtained from the thermal and structural analysis. PRO-E software is used for design and 3D modelling. ANSYS software is used for doing finite element analysis.

III. PROBLEMDescription

The objective of this project is to make a 3D model of the steam boiler and study the CFD and thermal behaviour of the steam boiler by performing the finite element analysis. 3D modelling software (PRO-Engineer) was used for designing and analysis software (ANSYS) was used for CFD and thermal analysis.

The methodology followed in the project is as follows:

- Create a 3D model of the steam Boiler assembly using parametric software pro-engineer.

- Convert the surface model into Para solid file and import the model into ANSYS to do analysis.

- Perform thermal analysis on the steam Boiler assembly for thermal loads.

- Perform CFD analysis on the existing model of the surface steam boiler for Velocity inlet to find out the mass flow rate, heat transfer rate, pressure drop.

IV. INTRODUCTION TO CAD/CAE

Computer-aided design (CAD), also known as computer-aided design and drafting (CADD), is the use of computer technology for the process of design and design-documentation.

INTRODUCTION TO PRO-ENGINEER Pro/ENGINEER Wildfire is the standard in 3D product design, featuring industry-leading productivity tools that promote best practices in design while ensuring compliance with your industry and company standards. Integrated Pro/ENGINEER CAD/CAM/CAE solutions allow you to design faster than ever, while maximizing innovation and quality to ultimately create exceptional products.

Different modules in pro/engineer

Part design, Assembly, Drawing & Sheet metal

INTRODUCTION TO FINITE ELEMENT METHOD:

Finite Element Method (FEM) is also called as Finite Element Analysis (FEA). Finite Element Method is a basic analysis technique for resolving and substituting complicated problems by simpler ones, obtaining approximate solutions. Finite element method being a flexible tool is used in various industries to solve several practical engineering problems. In finite element method it is feasible to generate the relative results.

V. RESULTS AND DISCUSSIONS

Models of steam boiler using pro-e wildfire 5.0: The steam boiler is modeled using the given specifications and design formula from data book. The isometric view of steam boiler is shown in below figure. The steam boiler outer casing body profile is sketched in sketcher and then it is revolved up to 360° angle using revolve option and tubes are designed and assembled to in steam boiler using extrude option.

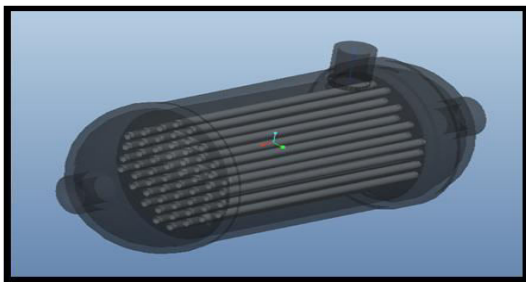


Fig:3 steam boiler 3d model

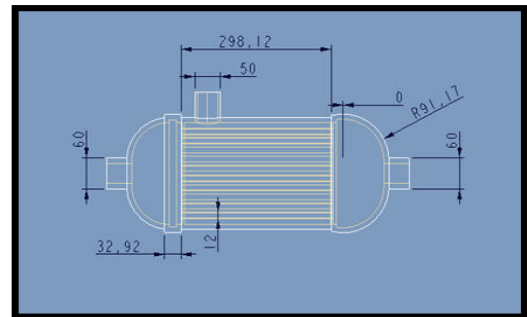


Fig:4 Steam boiler 2D model

CFD ANALYSIS OF STEAM BOILER VELOCITY – 25m/s

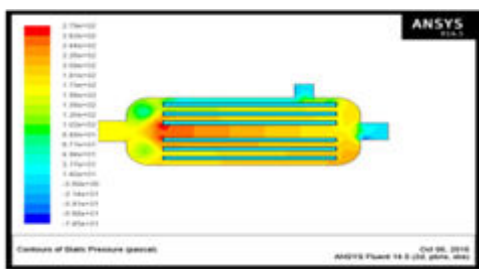


Fig:5 static pressure

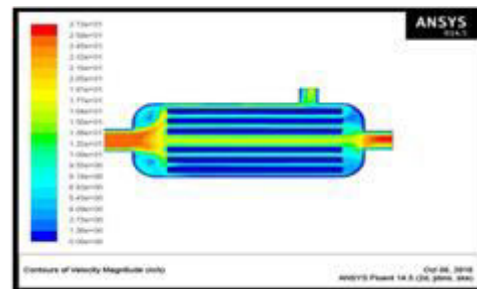
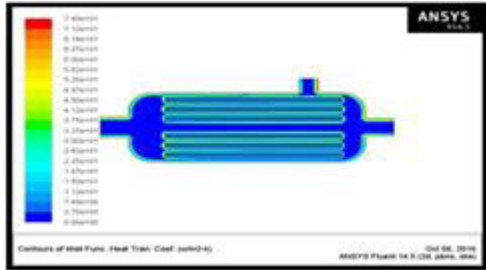


Fig:6 velocity

According to the above contour plot, the maximum static pressure inside of the steam boiler at one end of the tubes because the applying the boundary conditions at inlet of the steam boiler tubes and minimum static pressure at the steam outlet and exhaust outlet. According to the above contour plot, the maximum pressure is 2.79×10^2 Pa and minimum static pressure is -7.45×10^1 Pa.

According to the above contour plot, the maximum velocity magnitude of the steam at inlet and outlet of the boundaries, because the applying the boundary conditions at inlet of the steam boiler tubes and minimum velocity magnitude at inside the steam boiler tubes. According to the above contour plot, the maximum velocity is 2.73×10^1 m/s and minimum velocity is 1.36×10^0 m/s.

MASS FLOW RATE



Mass Flow Rate	(kg/s)
exhaust_outlet	-0.65603697
inlet	0.89999998
interior_trn_srf	-2.0488691
steam_outlet	-0.2500648
wall_trn_srf	0
Net	-0.0069018006

Fig: 7 heat transfer coefficient

According to the above contour plot, the maximum heat transfer coefficient of the steam boiler at surface edges of the steam boiler and tubes and minimum heat transfer coefficient inside the tubes and steam boiler. According to the above contour plot, the maximum heat transfer coefficient is $7.49 \times 10^1 \text{ W/m}^2\text{-K}$ and minimum heat transfer coefficient is $3.75 \times 10^0 \text{ W/m}^2\text{-K}$.

HEAT TRANSFER RATE

THERMAL ANALYSIS OF STEAM BOILER Used Materials steel, copper, brass & stainless steel, copper material for tube Steel, brass & stainless steel for boiler casing.

Total Heat Transfer Rate	(W)
exhaust_outlet	-100040.41
inlet	137242.72
steam_outlet	-38848.602
wall_trn_srf	0
Net	-1646.2891

MATERIAL PROPERTIES:

Copper material properties

Thermal conductivity = 385 W/m-K

Specific heat = $0.385 \text{ J/g}^\circ\text{C}$ Density = $0.00000776 \text{ kg/mm}^3$

Steel material properties

Thermal conductivity = 93.0 W/m-K

Specific heat = $0.669 \text{ J/g}^\circ\text{C}$ Density = $0.0000075 \text{ kg/mm}^3$

Stainless Steel material properties

Thermal conductivity = 34.3 W/m-K

Specific heat = $0.620 \text{ J/g}^\circ\text{C}$ Density = $0.00000901 \text{ kg/mm}^3$

Brass material properties Thermal conductivity = 233 W/m-K Specific heat = $0.380 \text{ J/g}^\circ\text{C}$

Density = $0.00000760 \text{ kg/mm}^3$

IMPORTED MODEL

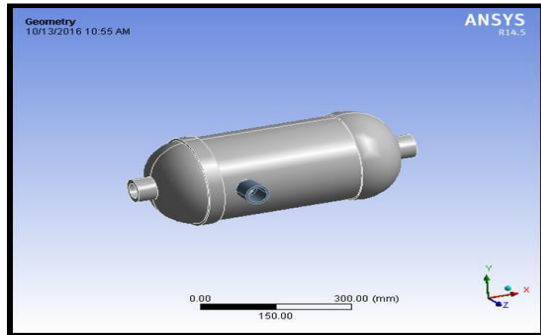


Fig8 imported model

MESHED MODEL

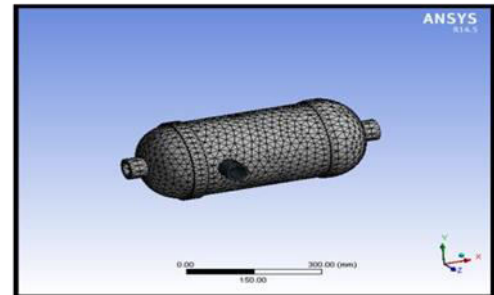


Fig9 meshed model

Finite element analysis or FEA representing a real project as a “mesh” a series of small, regularly shaped tetrahedron connected elements, as shown in the above fig. And then setting up and solving huge arrays of simultaneous equations. The finer the mesh, the more accurate the results but more computing power is required.

BOUNDARY CONDITIONS

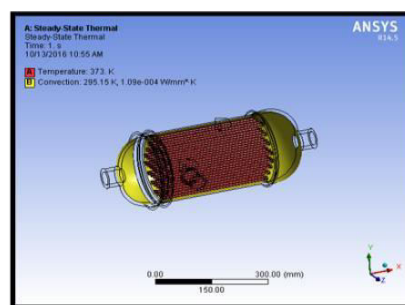


Fig10 boundary conditions

MATERIAL-STEEL FOR BOILER CASING, COPPER FOR TUBES

Velocity-25m/s, Heat transfer coefficient=7.49e+01 w/m²-k Temperature

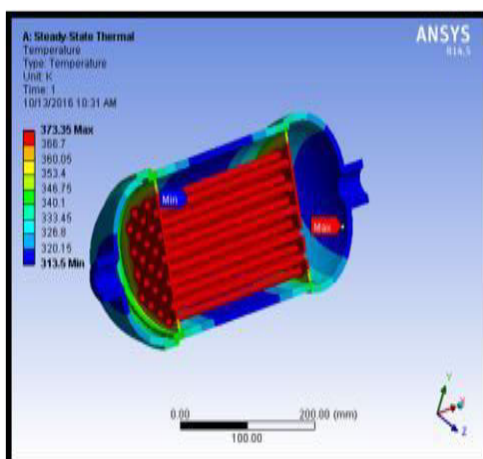


Fig11 temperature

Heatflux

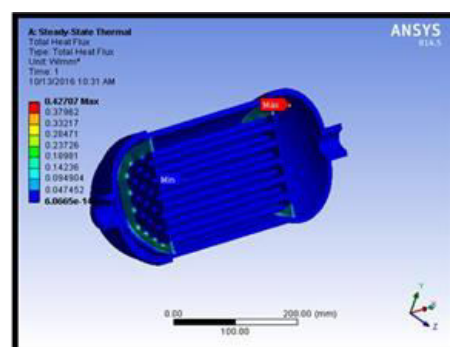


Fig12 heatflux

According to the contour plot, the temperature distribution maximum temperature at tubes because the steam passing inside of the tube. So we are applying the temperature inside of the tube and applying the convection except inside the tubes. Then the maximum temperature at tubes and minimum temperature at steam boiler casing. According to the contour plot, the maximum heat flux at inside the tubes because the steam passing inside of the tube. So we are applying the temperature inside of the tube and applying the convection except inside the tubes. Then the maximum heat flux at inside the tubes and minimum heat flux at steam boiler casing and outside of the tubes. According to the above contour plot, the maximum heat flux is 0.42707w/mm2 and minimum heat flux is 6.0665e-14w/mm2.

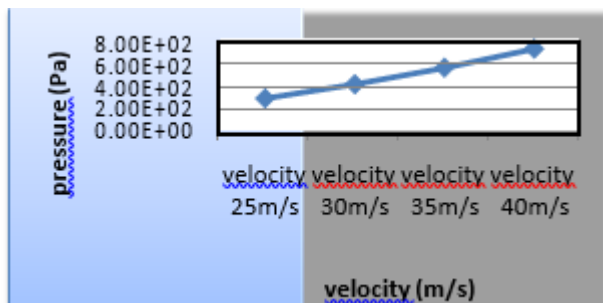
CFD ANALYSIS RESULT TABLE

Velocity (m/s)	Pressure (Pa)	Velocity (m/s)	Heat transfer co-efficient (w/m ² -k)	Mass flow rate (kg/s)	Heat transfer Rate (W)
25	2.79e+02	2.73e+01	7.49e+01	0.0069018	1646.2891
30	4.02e+02	3.27e+01	8.66e+01	0.005703	1511.3906
35	5.47e+02	3.82e+01	9.83e+01	0.010582	2394.7773
40	7.13e+02	4.37e+01	1.09e+02	0.01201278	2719.8281

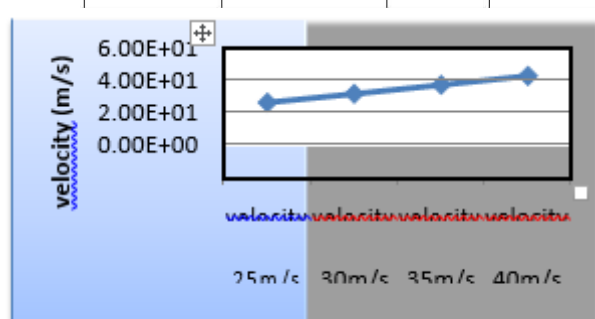
THERMAL ANALYSIS RESULT TABLE

Heat transfer coefficient (w/m ² -k)	result	Materials		
		steel	Stainless steel	brass
7.49e+01	Temperature(°C)	373.35	373.48	373.26
	Heat flux(w/mm ²)	0.42707	0.17094	0.56179
8.66e+01	Temperature(°C)	373.37	373.49	373.27
	Heat flux(w/mm ²)	0.45156	0.17639	0.60463
9.83e+01	Temperature(°C)	373.39	373.5	373.29
	Heat flux(w/mm ²)	0.47265	0.18108	0.64226
1.09e+02	Temperature(°C)	373.4	373.51	373.3
	Heat flux(w/mm ²)	0.4896	0.18485	0.67298

GRAPHS PRESSURE PLOTS



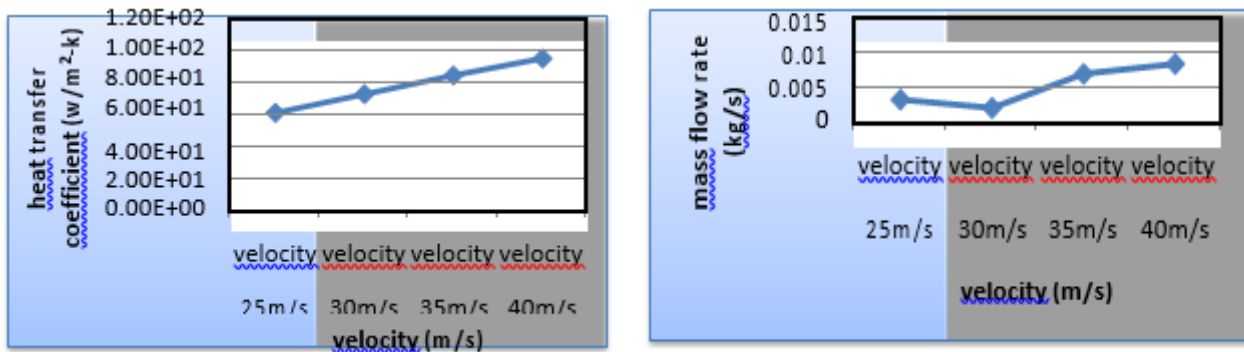
VELOCITY PLOT



velocity (m/s)

Variation of maximum pressure for various velocities. A plot between maximum pressure and velocities by FEA approach is shown in above fig. From the plot the variation of maximum static pressure is observed. Maximum static pressure increases with increases in velocities.

HEAT TRANSFER COEFFICIENT PLOT MASS FLOW RATE PLOT



Variation of maximum heat transfer coefficient for various velocities A plot between maximum heat transfer coefficient and velocities by FEA approach is shown in above fig. From the plot the variation of maximum heat transfer coefficient is observed. Maximum heat transfer coefficient increases with increases in velocities.

V. CONCLUSION

In this thesis the steam flow in steam boiler tubes is modelled using PRO-E design software. The thesis will focus on thermal and CFD analysis with different velocity (m/s). Variation of maximum mass flow rate for various velocities a plot between maximum mass flow rate and velocities by FEA approach is shown in above fig. From the plot the variation of maximum mass flow rate is observed.

Maximum mass flow rate increases with increases in velocities. Velocities (25, 30, 35 & 40 m/s). Thermal analysis done for the steam boiler by steel, stainless steel & brass at different heat transfer coefficient values. These values are taken from CFD analysis at different velocities. By observing the CFD analysis the pressure drop, velocity, heat transfer coefficient, mass flow rate & heat transfer rate increases by increasing the inlet velocities. By observing the thermal analysis, the taken different heat transfer coefficient values are from CFD analysis. Heat flux value is more for brass material than steel & stainless steel. So we can conclude the brass material is better for steam boiler.

REFERENCES

- [1] Finite Element Analysis of Steam Boiler Used in Power Plants 1 M. Suri Babu, 2 Dr. B. Subbaratnam 1 M. Tech student, 2 Professor, Dept of Mechanical Engineering, KITS, Markapur, A.P, India.
- [2] Structural and thermal analysis of a boiler using finite element Analysis D. Kondayya Department of Mechanical Engineering, Author Correspondence: Department of Mechanical Engineering, Sreenidhi Institute of Science & Technology, Ghatkesar, Hyderabad- 501301.
- [3] Analysis of New Boiler Technologies Dr. Mike Inkson
- [4] A Study Analysis and Performance of High Pressure Boilers With its Accessories J. Suresh babu 1, R. Latha 2, B. Praveen 3, V. Anil kumar 4, R. Rama kumar 5, S. Peerulla 6 1 Assistant Professor in MED, K.S.R.M College of Engineering, AP, India 2345 6 Student, mechanical department, K.S.R.M College of Engineering, AP, India
- [5] Design and analysis of the prototype of boiler for steam pressure control 1 Akanksha Bhoursae, 2 Jalpa Shah, 3 Nishith Bhatt Institute of Technology, Nirma University, SG highway, Ahmedabad-382481, India 3 Essar steels limited, Hazira, Surat-394270, India.
- [6] Lou Roussinos, P. E., "Boiler Design and Efficiency" [online], Available: <http://www.forestprod.org/drying06williamson.pdf>, Accessed: September 1, 2010.
- [7] Murdock, K. L., "3ds max 9 Bible, Wiley Publishing Inc. Indianapolis, Indiana, 2007.
- [8] Nagpal, G. R., 1998, Power Plant Engineering, Khanna, Delhi.
- [9] Steam Pressure Reduction: Opportunities and Issues by U.S Department of energy,
- [10] Rapid Start up Analysis of a Natural Circulation HRSG Boiler with a Vertical Steam Separator Design by M.J. Albrecht, W.A. Arnold, R. Jain and J.G. DeVitto,



INNO  SPACE
SJIF Scientific Journal Impact Factor
Impact Factor: 8.118



ISSN INTERNATIONAL
STANDARD
SERIAL
NUMBER
INDIA



INTERNATIONAL JOURNAL OF INNOVATIVE RESEARCH

IN SCIENCE | ENGINEERING | TECHNOLOGY

 9940 572 462  6381 907 438  ijirset@gmail.com



www.ijirset.com

Scan to save the contact details