



e-ISSN: 2319-8753 | p-ISSN: 2347-6710

IJIRSET

International Journal of Innovative Research in
SCIENCE | ENGINEERING | TECHNOLOGY



INTERNATIONAL JOURNAL OF INNOVATIVE RESEARCH

IN SCIENCE | ENGINEERING | TECHNOLOGY

Volume 11, Issue 6, June 2022

ISSN INTERNATIONAL
STANDARD
SERIAL
NUMBER
INDIA

Impact Factor: 8.118



9940 572 462



6381 907 438



ijirset@gmail.com



www.ijirset.com

Artificial Intelligence Based Protection System of Transmission Line

Prof. Aishwarya R Thengre, Prof. Nilima B. Dhande, Mahendra Gurunasingani

Professor, Department of Electrical Engineering, Shri Sai College of Engineering and Technology Bhadravati,
Maharashtra, India

Professor, Department of Electrical Engineering, Shri Sai College of Engineering and Technology Bhadravati,
Maharashtra, India

Student, Department of Electrical Engineering, Shri Sai College of Engineering and Technology Bhadravati,
Maharashtra, India

ABSTRACT: In trendy power systems, higher necessities square measure obligatory on relay protection technology. Ancient relay protection and fault designation technologies are unable to fulfill the necessities of the continual development of power systems. This document initial analyses the weaknesses of ancient broadcast line protection and uses the ability and self-learning of AI (AI). Together with the synthetic nervous network, the AI-based relay protection system shall be studied and also the experimental model shall be developed. Continuous development of power systems, and relay protection systems supported artificial intelligence (AI) technology have received increasing attention. Therefore, this document initial analyses the weaknesses of ancient broadcast line protection and uses the ability and self-learning of artificial intelligence (AI). The electrical transmission and distribution systems square measure functioning on their own independence operating. The operation of these systems is often changed by manual change method. The change method takes place solely there's a necessity for transmission line alteration and cable fault attending amount. The manual change operation throughout fault incidence period consumes heap of your time for the trained person to achieve the place and it's going to ends up in severe damages to the gear mechanism, also it's a threat to human safety. So as to avoid such drawbacks circuit breakers and automatic trippers were put in to the transmission lines and distribution systems. The circuit breakers and trippers square measure ready to turn out the system solely once the fault observation within the cable system. The projected AI based mostly Protection System of cable has the applying of AI within the facility is incredibly useful to resolve the matter of relay protection of transmission lines. On this basis, this text introduces the analysis of AI-based relay protection system.

KEYWORDS: Artificial intelligence, Digital relay, Distance protection, ANN.

I. INTRODUCTION

In way of life, many of us have applied robots to numerous aspects. Development has brought convenience to people's lives. Throughout the operation of the facility system, varied faults and abnormal in operation conditions could occur. The foremost common and most dangerous faults area unit varied forms of short circuits, as well as phase-to-phase shorts and ground shorts. The prevalence of faults and abnormal in operation conditions is inevitable. Once a fault happens, it'll have an effect on alternative non-faulty instrumentality and even cause new faults. So as to forestall system accidents from increasing, to confirm that non-faulty components will still faithfully provide power, and to take care of the soundness of power grid operation, it's needed to quickly and by selection take away faulty parts. The time for removing the fault is very short. Obviously, it's not possible for the in-operation personnel to seek out the faulty instrumentality and take away the faulty instrumentality. Transmission lines area unit among the ability system components with the very best fault incidence rate, since they're exposed to the atmosphere. Line faults because of lightning, storms, vegetation fall, fog and salt spray on dirty insulators area unit on the far side the control of man. The balanced faults during a transmission line area unit 3-part shunt and 3 phases to ground circuits. Single line-to-ground, line-to-line and double line-to-ground faults area unit unbalanced in nature. On a gear mechanism

protecting relaying system is incorporated to notice the abnormal signals indicating faults and isolate the faulted half from the rest of the system with nominal disturbance and equipment harm.

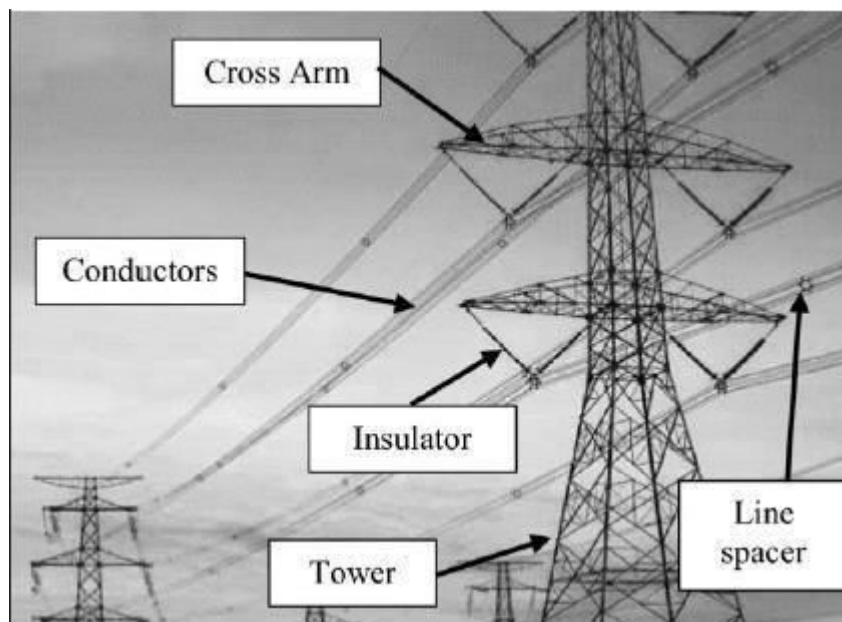


Fig 1: Overview

This survey tries to hide the various developments in digital relays for transmission line protection up to 2012 and purpose to some of the references showing promising directions. Total electrical resistance includes of fault resistance, resistance and electrical phenomenon of line conductors, electrical resistance of electrical device, reactance of the circuit, and electrical resistance of generating station. The conventional distance relay settings area unit supported a preset network configuration with worst fault outcomes. Because the neural network primarily based algorithmic rule has a lot of ability and is probably going to be a lot of correct, varied researchers used it for grid protection that is that the main focus of this study. Variety of prime functions and applications of ANN area unit accessible within the literatures; those can assist to recognize the perception of accretive it as a tool for fault detection, classification, and localization on line of the ability systems. Varied journals, conference papers, books, on-line libraries, and databases were researched and reviewed for gathering correct info to develop a broad insight and comprehension of the topic being studied. Both academic and no scholarly articles were surveyed and considered from databases like IEEE, Scopus, Google Scholar, Academia Search Premier, Pro-Quest, EBSCO, and other relevant websites. Therefore, this document initial analyses the weaknesses of ancient broadcast line protection and uses the ability and self-learning of artificial intelligence(AI). The electrical transmission and distribution systems square measure functioning on their own independence operating. The operation of these systems is often changed by manual change method.

II. LITERATURE REVIEW

- [1]. Kaur Harkamaldeep and Manbir Kaur, "Fault classification in a transmission line using Levenberg-Marquardt algorithm based artificial neural network" in (Data Communication and Networks, Singapore: Springer, pp. 119-135, 2020.

To stop instrumentation injury as well as personal injury and to guarantee reliable, stable, and reasonable electrical energy provide, extra-high voltage networks ought to be fitted with economical high-speed fault protection relays and schemes. Indeed, inefficient protection relay systems disturb the regular operation of electrical power systems and increase the danger of cascading blackouts. Consequently, a wise fault identification system ought to be developed to watch and management the operation of a classical relay, or to be itself used as a wise relay. This method

may also be used for the ex-post analysis of oscillographic fault records to create a report on what may need happened throughout the fault condition. Thus, the aim of a wise fault identification system is to supply precise info

on the external/internal fault discrimination, fault origination time, fault type, and fault location. This paper puts forward a time period sensible fault identification system (SFDS) supposed for high-speed protection of power system transmission lines. This system is primarily based on advanced signal process techniques, wave theory results, and machine learning algorithms. The simulation results show that the SFDS will offer associate degree correct internal/external fault discrimination, fault origination time estimation, fault kind identification, and fault location. This paper presents additionally the hardware needs and code implementation of the SFDS.

- [2]. A GUPTA, A. SRIVASTAVA, R. ANAND and T. TOMAŽIČ, "Business Application Analytics and the Internet of Things: The Connecting Link", (New Age Analytics: Transforming the Internet through Machine Learning IoT) and Trust Modeling, vol. 249, 2020.

It is important to grasp the result of series compensation on transmission voltage. If the result of series compensation on voltages isn't proverbial it'll cause numerous operational issues like high voltages and low voltages. Series compensation can cause low and high voltages because of completely different line loading conditions and also the methodology by that the voltage management is adjusted. The voltage on the one facet of the condenser ought to be adequately controlled otherwise the opposite finish of the condenser cause voltage issues. Once the road is gently loaded, over-voltages will cause issues and during this case, series compensation will decrease voltage. However just in case of heavily loaded lines, low voltages occur across the road, thus series compensation can increase the voltage. Voltage collapse results from low voltages. And high voltages either cause electric arc or decrease the life cycle of insulation and short circuits. Often, series compensation is employed to regulate power flow. On directional relaying, current and voltage inversions takes place in an exceedingly series salaried line. A fault direction are often known by fault identification scheme for series salaried line by amendment in magnitude of positive-sequence fault voltages and by amendment in section of positive-sequence fault currents. Simulations is finished with EMTDC/PSCAD associate degreed an rule is developed for series salaried line that uses fault current and voltage phasors to get the selections.

III. ARTIFICIAL NEURAL NETWORK

Artificial neural network (ANN) has been equipped with distinctiveness of multiprocessing, nonlinear mapping, associative memory, and offline and on-line learning talents. The wide uses of ANN with its capture outcomes create it a good diagnostic mean in power systems. Its skillfulness with multitude pertinence will be seen in different areas of science and engineering analysis. It's a fancy network of interconnected neurons wherever firing of electrical pulses via its connections ends up in info propagation. ANN is trained by victimisation previous chosen fault samples as input and set of fault info as output for fault identification application. Neural networks area unit comprised of primarily three basic learning algorithms like supervised learning, unsupervised learning, and strengthened learning. Among these supervised learning is most ordinarily used and is also cited as learning with a coach. This can be applied when the target has known price and is associated with every input within the coaching set. Figure one represents the supervised design of ANN. Error back propagation (BP) neural network was applied by Chan for identification of fault in grid. However slow speed coaching and therefore the shortcomings of native optima lead to the introduction of extra momentum issue for problem finding. Radial basis perform (RBF) neural network has a quicker learning speed and therefore the ability of absolute perform approximation. Bi et al. Given a completely

unique RBF neural network for estimating section of fault. Their simulation results of 4- bus check system shown that the potential of RBF neural network in grid fault identification was higher than the traditional BP neural web. For finding improper issues, neural network topologies are to be altered and there is an EEDTORETRAIN the network. Cardoso et al. used truth capability of multilayer perception (MLP) and generalized regression neural network (GRNN) for fault estimation in power system. GRNN is having the advantage of quicker learning, international optimum, and lower demand of comprehensive sample. They fed the failure info into MLP and therefore the resultant outcome was given as output to GRNN. They additionally compare DANN fault diagnosis ways with skilled system diagnostic ways and found that ANN based methods may evade the formation of experience, skilled heuristic information, and expression and hence save tedious work.

IV. METHODOLOGY

Inspired by biological nervous systems, a neural network combines many process layers, using easy components in operation in parallel. The network consists of associate input layer, one or more hidden layers,

associated an output layer. In every layer there are many nodes, or neurons, and the nodes in every layer use the outputs of all nodes within the previous layer as inputs, such that all neurons interconnect with one another through the various layers. Every somatic cell generally is assigned a weight that's adjusted throughout the training method and reduces or will increase in the weight amendment the strength of that neuron's signal.

Steps:

1. Data Preparation
2. AI Modeling
3. Simulation and Test
4. Deployment

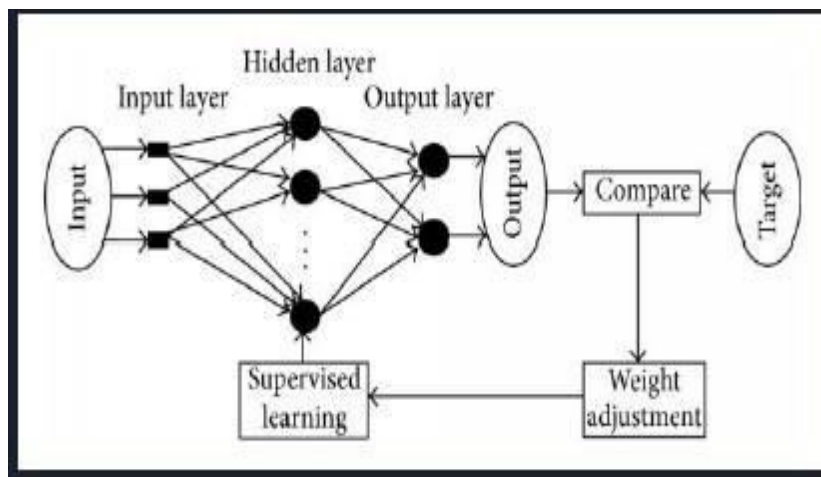


Fig 2: Proposed Methodology

V. RESULT AND DISCUSSION

This paper has provided a comprehensive survey of the current research within the application of Artificial Intelligence (AI) techniques in protection system of transmission line, as well as an overview of opportunities and challenges arising in this context.

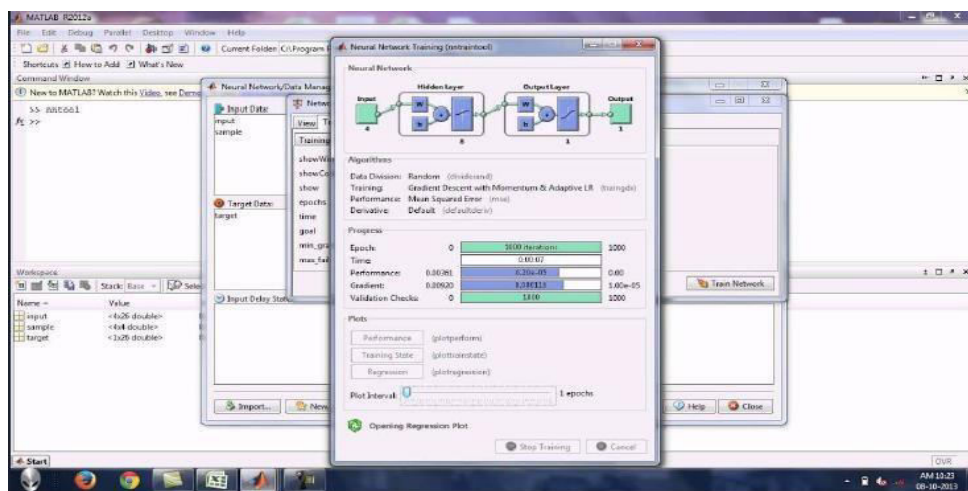


Fig 3: Proposed Output Method

VI. FUTURE SCOPE

1. Fault can be identity before the time of occur.
2. Our model can be connecting with SCADA in electric grid which provide compensation of fault with less time.
3. The AI based model which provide more accuracy over more datasets

VII. CONCLUSION

There are widespread applications of ANN in grid protection, however this paper intensively analyzed few of them. Novel tools and techniques square measure most popular to take care of power system irresponsibleness and security inside a satisfactory level for improvement of the performance of digital protecting relays, renovation of power business, and stability of the transmission lines. ANN is found to be strong, accurate, and economical approach for conductor fault detection, classification, localization, direction discrimination, and faulty part choice. A comparative study of various schemes for fault detection, fault classification, fault location, fault direction estimation, and faulty part choice has been mentioned in detail. an in depth survey of the revealed studies on the subject of ANN application to conductor protection is specified in this paper which is able to be useful for researchers for additional analysis and development during this field.

REFERENCES

- [1]. Kaur Harkamaldeep and Manbir Kaur, "Fault classification in a transmission line using Levenberg-Marquardt algorithm based artificial neural network" in (Data Communication and Networks, Singapore: Springer, pp. 119-135, 2020).
- [2]. A GUPTA, A. SRIVASTAVA, R. ANAND and T. TOMAŽIČ, "Business Application Analytics and the Internet of Things: The Connecting Link", (New Age Analytics: Transforming the Internet through Machine Learning IoT) and Trust Modeling, vol. 249, 2020.
- [3]. K. Sansanwal, G. Shrivastava, R. Anand and K. Sharma, Big Data Analysis and Compression for Indoor Air Quality In Handbook of IoT and Big Data, CRC Press, pp. 1-21, 2019
- [4]. Riskiawan Hendra Yufit, Azhari. Automated Software Testing System Using Multi-Agent System Characteristics Approach[J]. Advanced Science Letters, 2017, 23(3):2389–2391. <https://doi.org/10.1166/asl.2017.8760>
- [5]. Riskiawan Hendra Yufit, Azhari. Automated Software Testing System Using Multi-Agent System Characteristics Approach[J]. Advanced Science Letters, 2017, 23(3):2389–2391.
- [6]. Ibrahim Rabha W., Salih Yass K. On a fractional multi-agent cloud computing system based on the criteria of the existence of fractional differential equation[J]. Mathematical Sciences, 2017(1):1–7.
- [7]. T. S. Kamel, M. A. Moustafa Hassan, A. El-Morshedy, "Using a combined Artificial Intelligent Approach in Distance Relay for Transmission line Protection in EPS", 2009 Fifth International Conference on Soft Computing, Computing with Words and Perceptions in System Analysis, Decision and Control IEEE, 2010
- [8]. Xiangyu Zheng, Linling Gong, Aisikaer, Xiping MaJian, Dang "Relay protection system of transmission line based on AI" School of Electrical Engineering, Xi'an University of Technology, Xi'an, Shaanxi, China, PLOS 1, September 24, 2020



INNO SPACE
SJIF Scientific Journal Impact Factor
Impact Factor: 8.118



ISSN INTERNATIONAL
STANDARD
SERIAL
NUMBER
INDIA



INTERNATIONAL JOURNAL OF INNOVATIVE RESEARCH

IN SCIENCE | ENGINEERING | TECHNOLOGY

 **9940 572 462**  **6381 907 438**  **ijirset@gmail.com**



www.ijirset.com

Scan to save the contact details