



e-ISSN: 2319-8753 | p-ISSN: 2347-6710

IJIRSET

International Journal of Innovative Research in
SCIENCE | ENGINEERING | TECHNOLOGY



INTERNATIONAL JOURNAL OF INNOVATIVE RESEARCH

IN SCIENCE | ENGINEERING | TECHNOLOGY

Volume 11, Issue 6, June 2022

ISSN INTERNATIONAL
STANDARD
SERIAL
NUMBER
INDIA

Impact Factor: 8.118



9940 572 462



6381 907 438



ijirset@gmail.com



www.ijirset.com

Battery Energy Storage System to Stabilize Transient Voltage and Frequency

Prof. Aishwarya R Thengre, Saniya Khan Pathan

Professor, Department of Electrical Engineering, Shri Sai College of Engineering and Technology Bhadravati,
Maharashtra, India

Student, Department of Electrical Engineering, Shri Sai College of Engineering and Technology Bhadravati,
Maharashtra, India

ABSTRACT: The enactment of Battery Energy Storage System (BESS) and Static Compensator (STATCOM) in enhancing large-scale installation transient voltage and frequency stability, and up power export capability within 2 interconnected power systems. A PI-lead and lead-lag controlled BESS is planned for multimachine installation to produce synchronous voltage and frequency regulation inside the outlined battery state-of-charge (SOC) ranges and an equivalent Finnish transmission grid is employed to gauge the system performance. According to Australian National Electricity Market (NEM) grid needs, the performances of the planned management schemes are unit compared with typical PI controlled BESS and STATCOM below multiple temporary and permanent fault conditions. Additionally, 2 adjacent disturbance events are applied to gauge system performance with BESS and STATCOM. Through simulation results, it is shown that once there's a a quarter mile increase in power export and also the STATCOM fails, incorporating BESS improves the performance and justifies the novelty of this study. Moreover, the planned lead-lag controlled BESS manifests higher transient performance than BESS with PI-lead and ancient PI controller, within the event of divergent temporary and permanent faults. Index Terms—Battery energy storage system, frequency stability, PI lead controller, Lead-lag controller, power export, STATCOM, voltage stability.

KEYWORDS: Battery Energy Storage System (BESS), Frequency stability, Power export, Power system stability, Transient stability.

I. INTRODUCTION

Under various phenomena, like vertically integrated electricity structural reforms in an exceedingly advanced manner, the hyperbolic size of installation network, the aging transmission and distribution networks, the reduction in standard electricity resources, and also the deregulated electricity market have resulted hyperbolic power transfer across the grid that compact adversely on the soundness and dependability of the facility system. Nowadays, maintaining a stable installation operation is facing difficulties whereas satisfying the facility system dependability demand of N-1 criterion once various ranges of inescapable disturbances occur in installation. Moreover, hyperbolic uncertainty from variable nature of the giant-scale renewable energy resources create stability tasks harder to keep up because of the impact of the dissimilar dynamic behavior of standard and non-conventional generators on the system stability underneath tiny or large disturbance conditions. Transmission lines are unit operational nearly at transmission capability particularly throughout the cruel amount, that creates extra threats to the facility system stability at the arrival of line faults or overloading in several cases. Construction of conductors and generation facilities will cut back such congestions in transmission line. The new however mature technology termed as "FACTS" with quicker response capability facilitates the facility management and sweetening of accessible transfer capability (ATC) of the gear mechanism.

In follow, a STATCOM with integrated energy storage system (ESS) will guarantee vital improvement over ancient STATCOM performance. Considering many kinds of existing energy storage system, battery storage (electro-chemical) system is turning into additional fascinating thanks to their longer amount energy storage capability and downward trend of battery costs. The battery energy storage system with a STATCOM has emerged as promising near-term technologies in power applications. MW-level battery energy storage system, integrated in an exceedingly ancient installation is running for many years and operational expertise is very encouraging from the present installations, as in Chilean installation, West Virginia, Ohio, and CA. The installation of Battery Energy Storage

System (BESS) in electrical grid provides multiple service together with frequency support, voltage support, power damping oscillations, power quality and dependability and energy management. BESS also can cut back the transmission congestion and may support hyperbolic power flow. Versatile AC gear mechanism (FACTS) devices are contributively considerably in enhancing power grid transient stability (low/high order oscillation) by control power flows and enhancing power transfer capability of gear mechanism. Among the multiple FACTS devices, the actual interest of this study is on static synchronous compensators (STATCOM) as this device improves power transfer capability, enhances transient stability by control voltage, ameliorates inter-area oscillation and provides quicker and power tool voltage recovery through reactive power compensation. In addition, STATCOM outperforms alternative FACTS devices in damping power grid oscillations and enhancing power transmission capability in several occasions.

II. LITERATURE REVIEW

- [1]. M. Darabian and A. Jalilvand, "Improving power system stability in the presence of wind farms using STATCOM and predictive control strategy," IET Renewable Power Generation, vol. 12, no. 1, pp. 98–111, 2018.

They have offered an alternate algorithmic rule employing a genetic algorithm to figure out the best power flow drawback group action elastic AC transmission system devices (FACTS) during a multi-machine facility. By using their projected algorithmic rule, they known the placement and ratings of TCSC and UPFC. to seek out the best location of FACTS devices, the system value is thought-about. The system value includes generation value and investment value of FACTS devices.

- [2]. K. Karthikeyan and P. Dhal, "Transient stability enhancement by optimal location and tuning of STATCOM using pso," Procedia Technology, vol. 21, pp. 345 – 351, 2015.

Have recommended a true code GA for optimizing the situation and to regulate parameters of TCSC and SVC for accomplishing most obtainable transfer capability (ATC). ATC was calculated exploitation continuous power flow (CPF) technique. each the road thermal limit and bus voltage limits were thought-about. The recommended real-code GA was experimented on IEEE-24 bus check system. The simulated results incontestable that SVC improved voltage profile whereas TCSC increased ATC in each the thermal and voltage dominated case. They have offered organic process programming (EP), split and non split search area managing techniques for the optimally sitting and settings of FACTS devices.

- [3]. L. M. Castro, E. Acha, and C. R. Fuente-Esquivel, "A novel STATCOM model for dynamic power system simulations," IEEE Transactions on Power Systems, vol. 28, no. 3, pp. 3145–3154, Aug 2013.

This paper introduces a sophisticated model of the STATCOM appropriate for steady-state and dynamic simulations of large-scale power systems. It permits for a comprehensive illustration of the STATCOM's AC and DC circuits—this is in contrast to current observe wherever the STATCOM is depicted using a similar variable voltage supply that isn't amenable to a correct illustration of its DC circuit. The new STATCOM model includes a voltage supply convertor (VSC) asynchronous with an LTC electrical device. the previous is depicted by a posh tap-changing electrical device whose primary and secondary windings would correspond, in a very notional sense, to the VSC's AC and DC buses, severally. The magnitude and point in time of the complex faucet changer correspond to the AM index and therefore the section shift that may exist in a very PWM electrical converter to alter either reactive power generation or absorption strictly by electronic process of the voltage and current waveforms within the VSC. The numerical technique utilized to unravel the STATCOM model is that the Newton-Raphson methodology for each operating regimes, the steady-state and therefore the dynamic-state. The latter involves discretization of the STATCOMs and synchronous generators differential equations in order that the nonlinear algebraical equations and therefore the discretized differential equations square measure linearized around a base operational purpose and assembled along in a much-unified frame-of-reference for sturdy repetitive solutions.

III. METHODOLOGY

The first step is to Start Electrical model into simulation mode. When all the three generation start providing power into transmission line. One system counter with fault in any line between two power generator machine. In the

next step system will facing transient faults in the line. Transient will change the response of various parameter. Graphical form will be analysis.

Mathematical model will be like this

1. Find points a and b such that $a < b$ and $f(a).f(b) < 0$.
2. Take the interval [a,b] and find next value $X_0 = a + b/2$
3. Find $f(X_0)$ and $f'(X_0)$ $X_1 = X_0 - f(X_0)/f'(X_0)$
4. If $f(X_1) = 0$ then X_{12} is an exact root, else $X_0 = X_1$
5. Repeat steps 2 to 4 until $f(X_1) = 0$ or $|f(X_1)| \leq \text{Accuracy}$

IV. FLOWCHART

In this system we have a tendency to ar victimisation matlabin model 2018 a version which supplies US a flexibility of running code of electrical system and processor machine. therefore once we begin the simulation load begin running and generation provides electricity to load via pisections lines. From load we'd like to calculate the ability consumption from vi measure block that is extremely useful for comparison and relative study of output. currently b e s s model can offer the management of battery switch system over charging from electrical converter or renewable energy resources for additional purpose. The BEES model can facilitate to manage all the masses and every one the batteries uniformly distributed energy power sources in it. These wave form can distribute the scope for varied parameters graphical illustration.

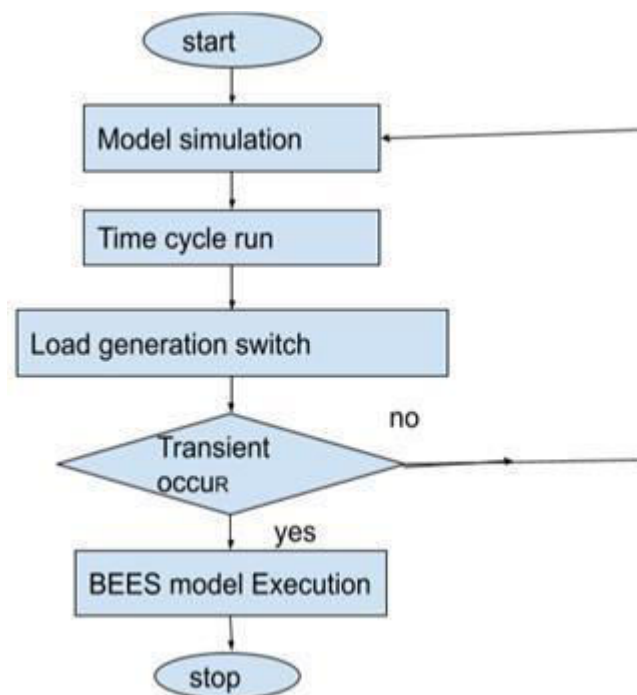


Fig: Flow chart of proposed system

V. APPLICATION

- For the operation of protecting devices and for emergency lighting at generating stations and substations.
- For beginning, ignition and lighting of cars, aircrafts etc.

- For lighting on steam and diesel railway trains.
- As a provide power supply in phonephone exchanges, laboratories and broadcasting stations.
- For emergency lighting at hospitals, banks, rural areas wherever electricity supplies don't seem to be potential.

VI. ADVANTAGES

- Permits for higher use of renewable energy. the utilization of batteries to store this power could be a necessity, guaranteeing the facility is used whenever you wish it.
- Other Protection.
- Less obsessed on the grid.
- Cut back your carbon footprint.
- Minimize Electrical Bills.

VII. DISADVANTAGES

- Higher direct prices than alternative residential alternative energy systems.
- A lot of complexness in estimates to urge the backup load right for your desires.
- A lot of components that require yearly scrutiny and/or maintenance.

VIII. FUTURE SCOPE

Storage and battery technology area unit growing chop-chop. nearly four GW of battery storage systems (BSS) went on-line worldwide in 2018, that was expected to have doubled by the tip of 2020. Utility or grid-scale batteries area unit stationary batteries with capability ranges from many up to many megawatt-hours.

IX. RESULT AND ANALYSIS

The following are the result of proposed work

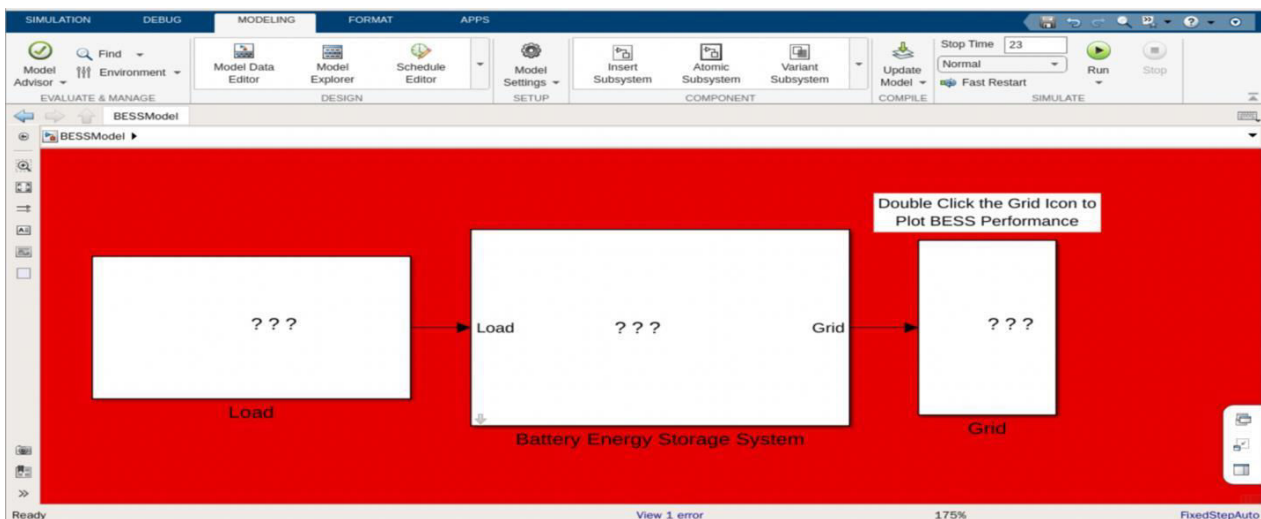


Fig 2. BESS

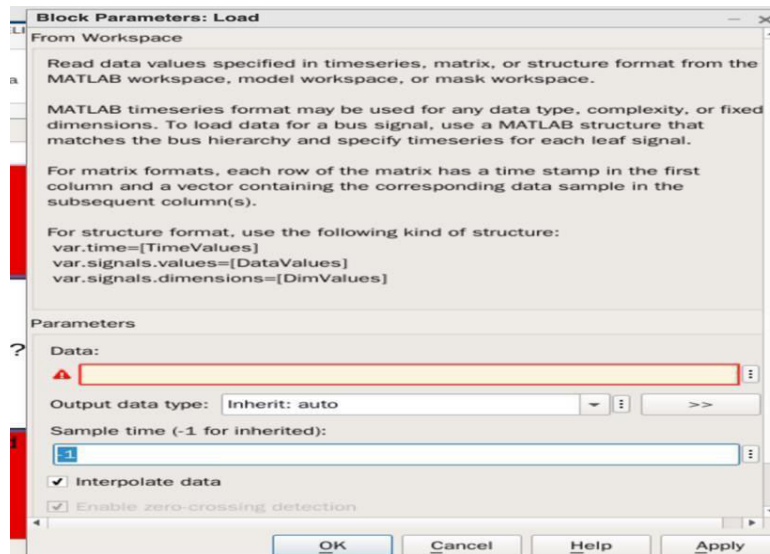


Fig 3. Load Profile

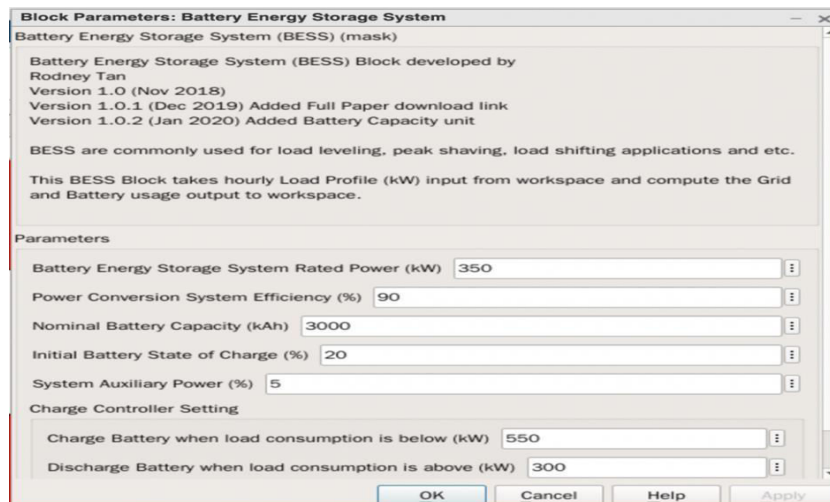


Fig 4. Battery Energy Storage System

X. CONCLUSION

BESS model can facilitate to analyse the transit happens throughout the conversion of AC into DC for transmission lines on battery management system. This project proposes a BESS PCS considering the REP constraint on the premise of system frequency stability. At the start, the dynamic models of Thermal Gen, Hydro Gen, and BESSs area unit established. The REP-constrained PCS will dynamically verify the BESS power configuration by examination the target REP levels and also the REP boundaries of every management space in numerous load eventualities. A model of the Australian five-area interconnected facility is established in MATLAB/Simulink to verify the effectiveness of the PCS, and also the prompt BESS power for every management space is obtained. Therefore, high REP level is achieved within the future, because the BESS mitigates the system frequency fluctuations effectively, and also the planned PCS indicates the optimum BESS power. additionally, the implementation of the BESS isn't just for frequency regulation however conjointly for the thanks to tack together BESS power in multiple functions, which is able to be mentioned in further work.



REFERENCES

- [1]. Renuka Kamdar, Manoj Kumar and Ganga Agnihotri, "Transient Stability Analysis and Enhancement of Ieee- 9 Bus System", Electrical & Computer Engineering: An International Journal (ECIJ) Volume 3, Number 2, and June 2014.
- [2]. M.A Salam, M. A. Rashid, Q. M. Rahman and M. Rizon, "Transient stability analysis of a three machine nine bus power system network", Advance online publication, 13 February 2014.
- [3]. Sandeep Kaur, Dr. Raja Singh Khela, "Power system design & stability analysis," international journal of advanced research in computer science and software engineering, Volume 4, Issue 1, January 2014.
- [4]. Naveed Anwar, Aamir Hanif, Hafiz Farhaj Khan, Mian Farhan Ullah and Waqas Ahmed, "Analysis of Transient Stability of IEEE-9 Bus System Under Multiple Contingencies" IEEE Electrical and Power Engg., Volume: 13, 02, 2019
- [5]. Yaman C. Evrenosoglu, Hasan Dag, "Detailed Model for Power System Transient Stability Analysis"
- [6]. Ebru Tavukcu1, "Transient Stability Analysis of the Transmission System Considering the Initial Steady State Results" The 10th International symposium on advanced topics in electrical engineering March 23-25, 2017.
- [7]. Ramandeep Kaur, Divesh Kumar, " Transient Stability Analysis of IEEE 9 Bus System in Power World Simulator", IJERA 2016
- [8]. P. Kundur, Power System Stability and Control, New York: McGraw-Hill. 1982 pp. 104-120.
- [9]. Fetissi Selwa, labed Djamel,"Transient Stability of synchronous generation in electrical network
- [10]. P.Maniraj, M.Yuvaraj,"Transient stability analysis for 6 Bus system using E –Tap-2018



INNO SPACE
SJIF Scientific Journal Impact Factor
Impact Factor: 8.118



ISSN INTERNATIONAL
STANDARD
SERIAL
NUMBER
INDIA



INTERNATIONAL JOURNAL OF INNOVATIVE RESEARCH

IN SCIENCE | ENGINEERING | TECHNOLOGY

 **9940 572 462**  **6381 907 438**  **ijirset@gmail.com**



www.ijirset.com

Scan to save the contact details