



e-ISSN: 2319-8753 | p-ISSN: 2347-6710

IJRSET

International Journal of Innovative Research in
SCIENCE | ENGINEERING | TECHNOLOGY

INTERNATIONAL JOURNAL OF INNOVATIVE RESEARCH

IN SCIENCE | ENGINEERING | TECHNOLOGY

Volume 11, Issue 5, May 2022

ISSN INTERNATIONAL
STANDARD
SERIAL
NUMBER
INDIA

Impact Factor: 8.118

9940 572 462

6381 907 438

ijirset@gmail.com

www.ijirset.com



Health Care with Android Development

Dr.G.R.Bamnote¹, Piyush Bodhani², Naina Moryani³, Pranav Deshmukh⁴, Prachi Shinde⁵

Department of Computer Science & Engineering, Prof. Ram Meghe Institute of Technology and Research,
Badnera, India¹

Department of Computer Science & Engineering, Prof. Ram Meghe Institute of Technology and Research,
Badnera, India²

Department of Computer Science & Engineering, Prof. Ram Meghe Institute of Technology and Research,
Badnera, India³

Department of Computer Science & Engineering, Prof. Ram Meghe Institute of Technology and Research,
Badnera, India⁴

Department of Computer Science & Engineering, Prof. Ram Meghe Institute of Technology and Research,
Badnera, India⁵

ABSTRACT: The rapid evolution of technology, has offered access to a variety of applications and technologies to healthcare professionals. New operating systems developed in the field of mobile devices revolutionized the way in which they are used. One of the main features offered by advanced software of a smartphone is the user's access to a wealth of new, impressive applications across several operating systems for smartphones. The health-related applications provided through smartphones, promote more active involvement of patients and healthcare professionals to provided care and are a new tool for improving health. The purpose of this abstract paper or article was to refer to applications currently used in the health sector, indicating specific capabilities they offer through review of electronic literature, focusing on scientific articles published in databases (PubMed, Scopus, etc.) referring to the potentials they offer. It seems that several health-related applications have been developed, that can be classified into two main categories. One category comprises applications that are informative, i.e. provide information to the user about health issues, allowing a person to read, gather resources to make decisions, but also to introduce its own data.

KEYWORDS: Android Development, Health Analysis, Health Awareness, Health Care, Android with Health Care.

I. INTRODUCTION

Since human existence, contacting someone has been one of the most imperative approaches to communicate and share our information in various mode of life. Communication serves as a foundation for planning and establishing, promoting motivation, altering individual's attitudes and in socialization. It can be verbal or written such as emails, formal letters or memos. Communication is important because it allows people to share thoughts, happiness, and improve interactions. In the absence of communication, there won't be any common interests and advancements in society which is important because it helps people to stay organized and understand each other. Without communication teams could not put projects together, business could not operate, and people could not understand what is going on. It is the basic method through which humans interact.

Among the various modes of communication available nowadays which includes calling, texting, email, voicemail, writing letter etc. there are also other modes of communication, which include language, lettering, communication in person or communication at a distance by means of radio, telephone, television, telegraph, etc.



The two types are: Formal & Informal. In case of formal the person has to formally plan a consultation or send an email and transfer some statement to them. In case of informal the person has to meet up someone casually and transfer some memo to them.

Today mobile phones vary from flip phones sufficiently little to suit during a front jean pocket to sleek, slim-profiled bit screens that square measure as good because the average desktop. With the appearance of smart-phones came “apps” - mini-applications which will do everything from finding a close-by eating house to scanning a coupon to count calories. Camera phones are commercially created since 2000, and most phones these days will take video furthermore. Today, most smart-phones either run Apple’s programming or the mechanical man counterpart. Cell networks square measure still standard; however, several phones will get rid of Wi-Fi and 3G or 4-G networks. Apps will convert calls into VoIP to reduce mobile vocation rates, and additional folks have mobile phones than own landlines. The mobile is here, and it’s here to remain. In a reliable & faster way.

II. LITERATURE SURVEY/RELATED WORK

In ref. [1], the authors analyzed a dataset consisting of several people suffering from various health issues, have been cured due to proper guidance and disciplined schedule provided by some new health care applications. Technology is constantly changing the way we live our lives, from living in the metaverse to getting a prescription on a smartphone app, our lives are transforming fast. The innovation in smartphone apps or as we like to call it “appnovation” is taking over every industry and healthcare is not behind. The booming app market with its ability to keep you in close touch with your audience, healthcare as we knew it has changed. Smartphone medical applications are becoming increasingly popular around the world, with more people using them for everything from medical treatments to general health and well-being. Every indicator point towards the Healthcare application development boom which brings us to an all important question.

In ref. [2], a graphical user interface-based prediction of heart health using an iot devices approach and to provide best advices to user’s time to time. The main focus of this study was to keep track of the Healthcare via android and iOS-based apps allow healthcare professionals to keep track of their patients’ conditions and progress during their treatment. The apps can store medical test results for patients.



III. PROPOSED METHODOLOGY

This is the Architecture of Application:

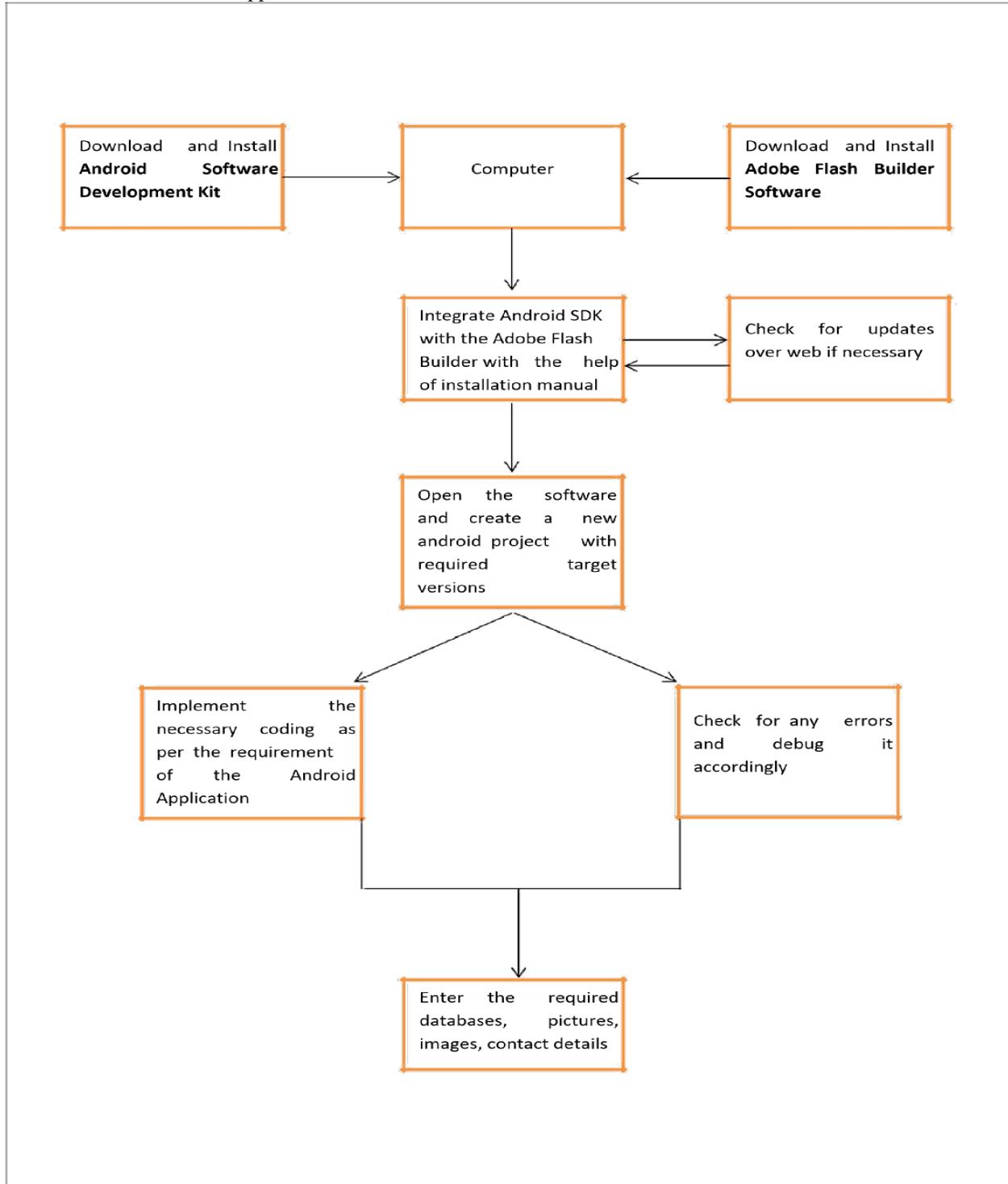


Fig 1: Architecture of the Application.



This design model can be represented by drawing the DFDs (Data Flow Diagrams) for the given SRS document. A data flow diagram is a graphical representation of the data flow through an information system which is used to model the process aspects of the system. DFD is the preliminary step used to create an overview of the system. DFD is used for structured design.

The Knuth-Morris-Pratt (KMP) Algorithm:

Knuth-Morris and Pratt introduce a linear time algorithm for the string-matching problem. A matching time of $O(n)$ is achieved by avoiding comparison with an element of 'S' that have previously been involved in comparison with some element of the pattern 'p' to be matched. i.e., backtracking on the string 'S' never occurs.

Components of KMP:

1. The Prefix Function (Π): The Prefix Function, Π for a pattern encapsulates knowledge about how the pattern matches against the shift of itself. This information can be used to avoid a useless shift of the pattern 'p.' In other words, this enables avoiding backtracking of the string 'S.'
2. The KMP Matcher: With string 'S,' pattern 'p' and prefix function ' Π ' as inputs, find the occurrence of 'p' in 'S' and returns the number of shifts of 'p' after which occurrences are found.

IV. RESULT AND DISCUSSION

In this part summarizes the paper and make aware about the future crime based on algorithms and crime data set we find out the crime rate in various section like age based, male vs female, area based and monthly crime rates. The data sources and methods used to guide forecasting include various type crime statistics, survey of the general people data, literature reviews and statistical models that extrapolate crime trends into the future. Algorithms models that describe the behavior of observe past values can be used to forecast future crime trends by projecting a time series analysis of crime trends into the future. Any predictive model endeavor to show a relationship between certain predictor and a dependent variable. To ensure the greater accuracy those models must identify and predict the scope and nature of a number of factors that will influence crime and victimization in the future. This research paper about future crime rate predictions are much more specific and precise. The accuracy table of different algorithm accuracy (Table 5):

In this part summarizes the paper and make aware about the future crime based on algorithms and crime data set we find out the crime rate in various section like age based, male vs female, area based and monthly crime rates. The data sources and methods used to guide forecasting include various type crime statistics, survey of the general people data, literature reviews and statistical models that extrapolate crime trends into the future. Algorithms models that describe the behavior of observe past values can be used to forecast future crime trends by projecting a time series analysis of crime trends into the future. Any predictive model endeavor to show a relationship between certain predictor and a dependent variable. To ensure the greater accuracy those models must identify and predict the scope and nature of a number of factors that will influence crime and victimization in the future. This research paper about future crime rate predictions are much more specific and precise. The accuracy table of different algorithm accuracy

[3] In this part summarizes the paper and making people aware about their health and make them more reliable on the application we have made use of KMP results into fast results which will help Individual to search faster and easier. it's a 100% fast and reliable algorithm. In the future, we will integrate more apps to our main application to make it a more sophisticated auto-help tool and to provide a wide range of facilities to the end user. These apps will include: (i) Measuring blood pressure and Measuring Weight of the body, (ii) Provide reminders to users about their medications which help them to take medicine on time. Therefore, through these reminders, the user can take care of their health, and (iii) Graphs of the output obtained will help the user to keep track of the changes in diabetes-related readings and to manage their diet and health in a more effective way.



V. CONCLUSION

[4]. The doctor's directory system through mobile devices is a very effective tool which can be used to a great extent. The system is portable and can be easily installed and used on any mobile phones supporting Android OS. The use of this system can result in a reduction of number of hours spent in searching for doctors and contacting them at the time of need. It also provides an interface which is easy to understand by the users and greatly helps in adapting to the use of this system. We can enhance the application by creating directory of doctors at country, state or district level. The feature to update the details of the doctors at a later stage can also be implemented. The system can also be enhanced by using voice recognition feature of the Android.

REFERENCES

- [1] Asghar, M. Z., Khan, A. R., & Asghar, M. J. (2009). Computer assisted diagnoses for red eye (CADRE). *Int. J. of Computer Science & Engineering*, 1(3), 163-170. Last accessed, 25 Nov 2015.
- [2]. Dr. Muhammad Zubair Asghar and Muhammad Junaid Asghar. "Expert System For Online Diagnosis of Red-Eye Diseases" *International Journal of Computer Science & Emerging Technologies (IJCSET)* 1.2 (2010): 35-39.
- [3]. Dr. Muhammad Zubair Asghar and Muhammad Junaid Asghar. "Diagnosis of Skin Diseases using Online Expert System" *International Journal of Computer Science and Information Security* 9.6 (2011): 323-325. using Online Expert System "International Journal of Computer Science and Information Security 9.6 (2011): 323-325.
- [4] Asghar MZ, Asghar MJ. Expert System for Online Diagnosis of Red-Eye Diseases. *International Journal of Computer Science & Emerging Technologies (IJCSET)*. 2010;1(2) Last accessed, 25 Nov 2015.
- [5] Asghar MZ, Habib A, Habib A, Zahra SR, Ismail S. AndorEstimator: Android based Software Cost Estimation Application. arXiv preprint arXiv:1605.02304. 2016 May 8. Last accessed, 25 Nov 2015.



INNO SPACE
SJIF Scientific Journal Impact Factor
Impact Factor: 8.118



ISSN INTERNATIONAL
STANDARD
SERIAL
NUMBER
INDIA



INTERNATIONAL JOURNAL OF INNOVATIVE RESEARCH

IN SCIENCE | ENGINEERING | TECHNOLOGY

 **9940 572 462**  **6381 907 438**  **ijirset@gmail.com**



www.ijirset.com

Scan to save the contact details