



e-ISSN: 2319-8753 | p-ISSN: 2347-6710

IJIRSET

International Journal of Innovative Research in
SCIENCE | ENGINEERING | TECHNOLOGY

INTERNATIONAL JOURNAL OF INNOVATIVE RESEARCH

IN SCIENCE | ENGINEERING | TECHNOLOGY

Volume 11, Issue 5, May 2022

ISSN INTERNATIONAL
STANDARD
SERIAL
NUMBER
INDIA

Impact Factor: 8.118

9940 572 462

6381 907 438

ijirset@gmail.com

www.ijirset.com

A Seismic Response Analysis of Masonry in filled RC frames with Openings

Alok Kumar¹, Prof. Harshavardhan Rangari², Prof. GirishSawai³

Research Scholar, Department of Civil Engineering, V.M. institute of Engineering and Technology, Nagpur, India¹

Assistant Professor, Department of Civil Engineering, V.M. institute of Engineering and Technology, Nagpur, India²

Head of Department, Department of Civil Engineering, V.M. institute of Engineering and Technology, Nagpur, India³

ABSTRACT: The evaluation of the seismic weakness and breakdown capability of masonry - infilled RC outline structures presents a critical test as a result of the convoluted disappointment components they could show and the quantity of variables that could influence their way of behaving. As a general rule, there are two kinds of investigation techniques that can be utilized to recreate the inelastic way of behaving of infilled outlines. One is to utilize improved on outline models in which infill dividers are addressed by identical slanting swaggers, and the other is to utilize refined limited component models that can catch the disappointment conduct of RC outlines and infill dividers in a point by point way. Nonetheless, the two kinds of models have impediments in re-enacting primary reaction through breakdown. While refined limited component models are not computationally productive, improved on models are less precise in view of their powerlessness to address some disappointment systems that could happen in an infilled outline. In this paper, conceivable disappointment components and reasons for breakdown of masonry - infilled RC structures are examined, and both streamlined and refined limited component examination strategies that can be utilized to recreate the inelastic reaction of these designs and survey their weakness to fall are given mathematical models. Extra innovative work expected to further develop breakdown re-enactments is examined.

KEYWORDS: Masonry; Infill Walls; Reinforced Concrete Frames; Earthquakes; Seismic; Collapse;

I. INTRODUCTION

Types of frames

In plane casing, the whole part lies in a similar plane and is interconnected by unbending joints. The inward pressure resultants at a cross segment of a plane casing part comprise of twisting second, shear force and a pivotal power. The huge distortion in the plane edge is just flexural and hub.

The structure envelope in India is typically made of workmanship dividers, with walled in area and infill capacities. Stone work dividers have a significant efficient significance and contribute fundamentally to the structure execution. Regardless of whether infill dividers have no heap bearing capacity, they contribute fundamentally to the seismic way of behaving of structures.

Outline designs can be ordered into

1. Rigid edge structures
 - Pin finished
 - Fixed finished

The word unbending means capacity to oppose the distortion. Unbending casing designs can be characterized as the designs in which shafts and sections are made solidly and act all in all to oppose the minutes which are producing because of applied load. Inflexible casing structures give greater dependability.

2. Propped outline structure

In supported outline framework, propping are normally given among pillars and segments to build their opposition against the parallel powers and sideways powers because of applied load. Supporting is generally finished by setting askew individuals between the shafts and segments.

3. Gabled underlying casing

Gabled casing structures for the most part have the top at their top. These edges frameworks are being used where there are conceivable outcomes of weighty downpour and snow.

4. Entrance underlying casing

Entryway primary casings normally seem to be an entryway. This edge framework is a lot of being used for development of modern and business structures.



II. LITERATURE REVIEW

In 2003 Asteris P. G., M.Asce introduced limited component method for the examination of brickwork infilled plane edges under parallel burdens. A parametric report was done utilizing the position and the level of the workmanship infill board opening as boundary for the instance of one-story one-straight infilled outline. The examination was stretched out to the instance of multistorey, completely or somewhat infilled outlines. It was seen that the rearrangement of shear force fundamentally impacted by the presence and congruity of infill boards and the presence of infills prompts diminished shear powers on the casing sections. Likewise, it was seen that on account of an infilled outline with a delicate ground story, the shear powers following up on sections are significantly higher than those gotten from the examination of the uncovered casings.

In 2004 Decanini, Mollaioli and Saragoni examined the impact of stone work infills on the exhibition of supported substantial edges exposed to tremor ground movements. An identical discrete shear-type model with and without infills was utilized for the assessment of flexible and inelastic reaction of multi-story outline structures. The workmanship infilled, demonstrated through comparable swagger components, which can convey compressive burdens, described by a romanticized debasing hysteretic conduct. The took on numerical models were approved by contrasting mathematical and test results. Three unique kinds of stone work infills, characterized as feeble, transitional and solid were utilized to research the impact of the mechanical qualities of the infills. The consequences of the examination proposed that the worldwide non-straight seismic reaction of built up substantial edges with workmanship infill can be reproduced by a somewhat basic numerical model, which consolidates a shear-type model with comparable swagger components addressing the infill dividers, gave that the infill doesn't bomb out of plane. It was seen that infills, in the event that present in all accounts, give a huge commitment to the energy dispersal limit, diminishing the dissemination energy requests in outline components and diminishing fundamentally the greatest relocations.

In 2007 Korkmaz and Demir revealed that the infill workmanship dividers were only sometimes remembered for mathematical examination of supported concrete underlying frameworks, since stone work boards were by and large viewed as non-primary parts. Nonetheless, these boards influence the primary reaction, albeit the intricacy they acquaint with examination, for the most part keep them unaccounted for, A 3-story R/C edge structure with various measure of stone work infill dividers was considered to explore the effect of infill dividers on seismic tremor reaction of these sorts of designs. The inclining swagger methodology was taken on for demonstrating workmanship infill dividers. Sucker bends were gotten for the designs utilizing nonlinear examination choice of business programming SAP2000. Nonlinear investigations were acknowledged to portray weakling bends and results were analyzed. The impacts of sporadic design of workmanship infill divider on the exhibition of the construction were contemplated. From the weakling bends, story removals, relative story relocations, most extreme plastic not entirely set in stone.

In 2008 GoutamMondal and Sudhir K Jain proposed a decrease factor for powerful width of slanting swagger over the strong supported concrete (RC) infilled outline with focus opening to compute its underlying sidelong solidness. Beginning sidelong solidness was viewed as 10% of the parallel strength of the infilled outlines. He presumed that the impact of opening on the underlying horizontal firmness of infilled casings ought to be dismissed assuming the area of opening is under 5% of the region of the infill board, and the swagger width decrease component ought to be set to one, i.e., the edge is to be dissected as a strong infilled outline.

In 2008 Pujol Santiago and AmadeoBenavent-Climent saw that ceaseless infill brick work dividers helped in decreasing the weakness of a supported substantial construction. A full-scale three-story level plate structure was reinforced with infill block facades and tried under removal inversions. The consequences of the test were contrasted and results from a past trial in which a similar structure was tried without infill dividers. In the underlying test, the construction encountered a punching shear disappointment at a chunk section association. The expansion of infill dividers assisted with forestalling chunk breakdown and expanded the firmness and strength of the construction. The deliberate float limit of the fixed design was 1.5 % of story level. A mathematical model of the test structure was adjusted to match exploratory outcomes. Mathematical reenactments of the reaction of the reinforced construction to a few scaled ground movement records proposed that the deliberate float limit wouldn't be reached areas of strength for during movement.

In 2008 Asteris P.G. proposed reasonable models to portray the edge infill division, to more readily recreate the convoluted way of behaving of infilled outlines under sidelong loads. In the examination the infill/outline contact lengths and the contact stresses were assessed as an essential piece of the arrangement, and not expected in a specially appointed way. A PC program for the investigation of infilled plane casings, under horizontal burdens, was created. Utilizing this strategy, the reaction of a solitary cove single-story workmanship infilled R.C outline, under a parallel burden at the pillar level, was explored.

In 2008 Taher and Afefy examined the impact of halfway brick work infilling on the seismic horizontal way of behaving of low, medium, and elevated structures. The most straightforward identical casing framework with diminished levels of opportunity was proposed for taking care of multi-story multi-narrows infilled outlines. The

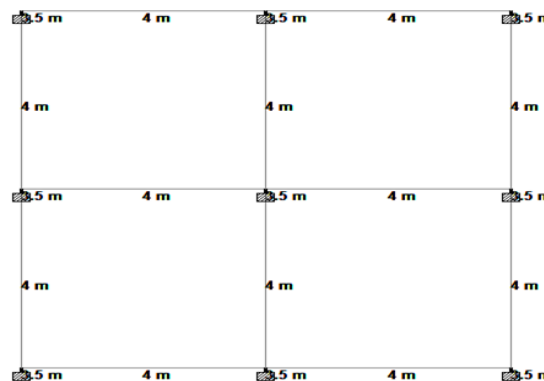


framework was made out of a homogenized continuum for the supported substantial individuals propped with one-sided corner to corner swaggers for each cove, which were enacted exclusively in pressure. Mathematical and material nonlinearity of both infill board and built up substantial edge were viewed as in the nonlinear limited component examination. The outcomes mirrored the meaning of infill in expanding the strength, firmness, and recurrence of the whole framework relying upon the position and measure of infilling. Lower infilling was noted to give more solidness to the framework as contrasted and upper areas can be utilized while composing significant ends.

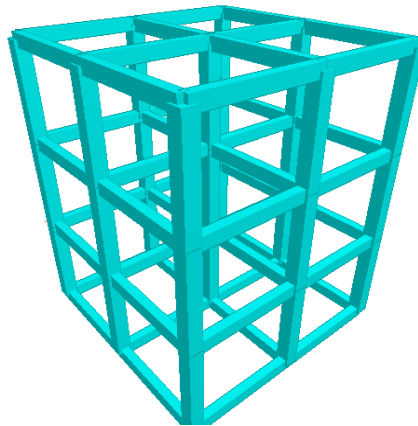
III. METHODOLOGY

Input parameters

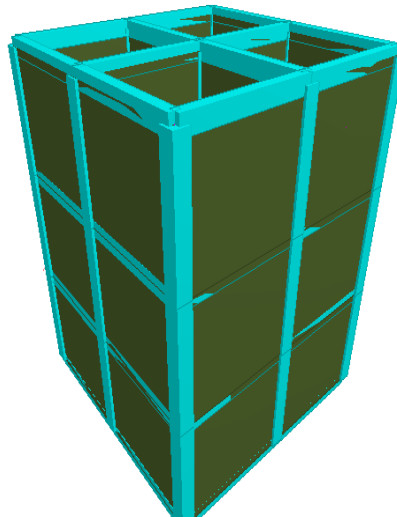
1. Height of the building- 10.5m ,with each storey height- 3.5 m
2. Column Size- 450 mm X 450 mm
3. Beam Size- 450 mm X 300 mm
4. Thickness of masonry infill
 - T1 = 300 mm
 - T2 = 200 mm
 - T3 = 100 mm
5. Live load- 3 kN/m²
6. Dead load of plane frame- 5.529 kN/m² (Calculated by STAAD)
7. Dead load of Plane frame with infill- 19.20 kN/m² (Calculated by STAAD)
8. Zone - V
9. Importance factor - 1
10. Response Reduction factor - 5
11. Soil type – Hard
12. Damping -5 %
13. Load combination as per IS 456
14. BRICK PROPERTIES
 - Brick Density - 19.54 kN/m³
 - Young's Modulus of Elasticity – 8273708.736 kN/m²
 - Poisson's Ratio – 0.16
 - Shear Modulus - 1500X10³ kN/m²
 - Thermal Coefficient – 0.000006
 - Damping – 3%



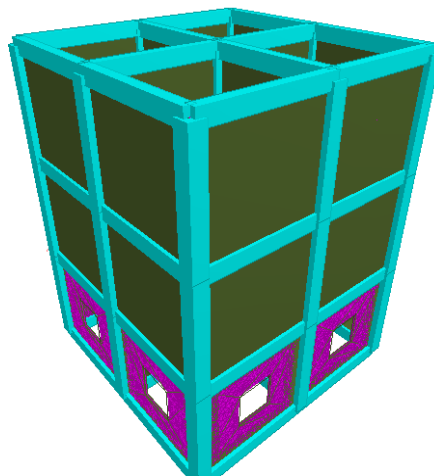
Plan of the building



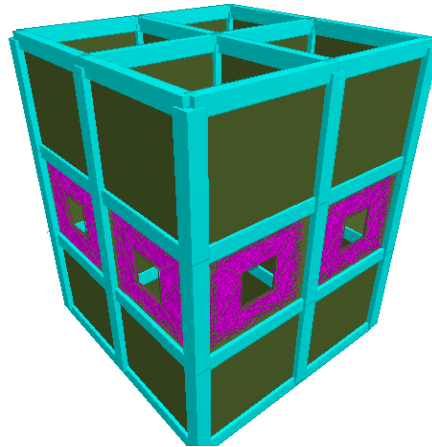
3D Plane Frame



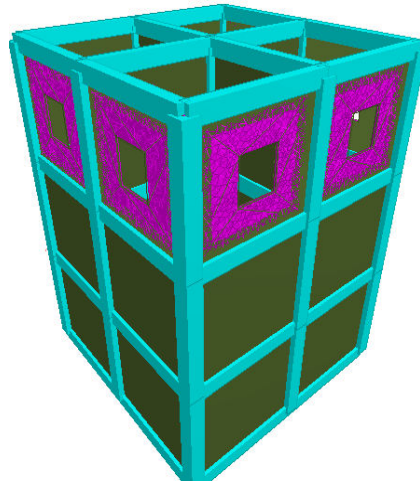
3D Plane Frame with Infill



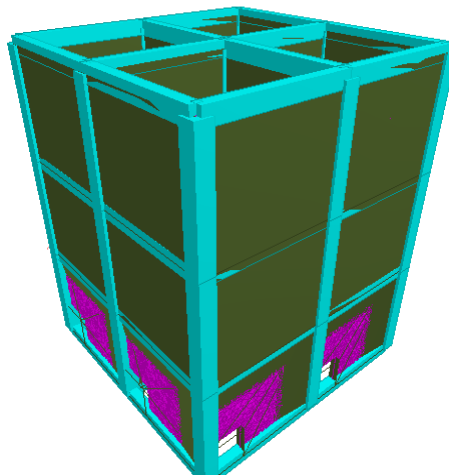
3D Plane Frame Infill with centre opening at ground floor



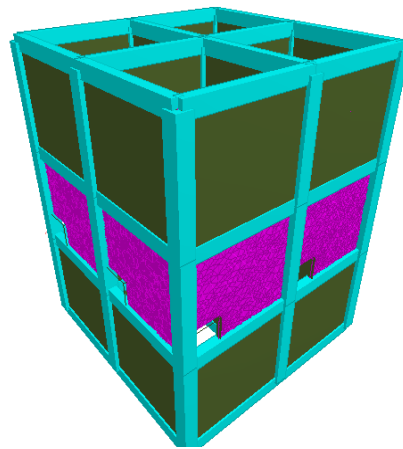
3D Plane Frame Infill with centre opening at first floor



3D Plane Frame Infill with centre opening at second floor



3D Plane Frame Infill with corner opening at ground floor



3D Plane Frame Infill with corner opening at first floor

IV. RESULTS

Centre Opening

Figure shows the variation of displacement along the building height for opening located in centre in ground storey only. It has been observed from fig.3.1 (a) that the storey displacement increased along the building height with maximum increase of 87.8%. The percentage of increase of storey displacement also increased with increase in the building height for frames with and without openings the maximum percentage of increase observed for the top storey. The masonry infill thickness results in reduction of deformation demand as shown in Table.3.1 (a).

Figure 3.1(b) depicts that the base shear was maximum at the base with 84.07% of increments with respect to plane frame of the building and it decreased along the building height. This is due to fact that $V_b = Ah.W$

Where A_h is the seismic coefficient which depends upon various seismic parameters like Z, I, R etc. So the seismic weight is maximum at the bottom storey. Therefore, the base shear increases and lateral force decreases consequently.

From Figure 3.1 (c) shows the variation of storey moment with the building height for the frames with and without openings. It has been observed from Figure 3.1 (c) that the storey moment is maximum at the first storey and it decreases along the building height with the maximum percentage of 90.07%, observed for the bottom storey. This is due to the fact that the top storey has the maximum lateral force and as per the classical principle of the structural mechanics “the moment is minimum where the lateral force is maximum”. As the lateral force is maximum at the top storey, the moment is minimum. The percentage variation of the moment was maximum for the plane frame and it increased with the presence of opening and decreased with the increase in thickness of the masonry wall.

The pattern of variation of the seismic response parameters for first and second storey followed a similar pattern as for the ground storey as evident from figure 3.2 and figure 3.3. However, the percentage of variation of seismic response parameters was different and has been indicated in Table 3.2 and 3.3.

Ground Storey

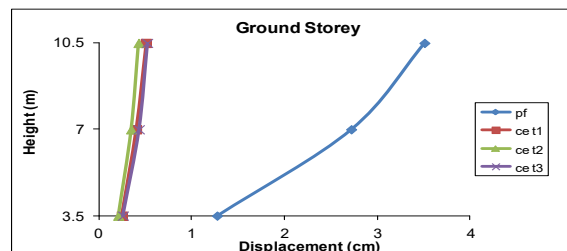


Fig 3.1. (a) Displacement due to centre opening in Ground Storey (ce)

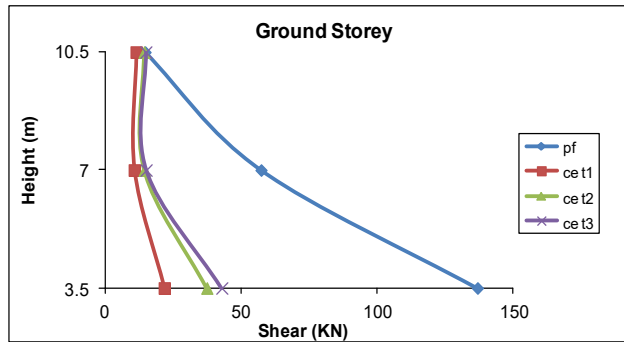


Fig 3.1. (b) Base Shear due to centre opening in Ground Storey (ce)

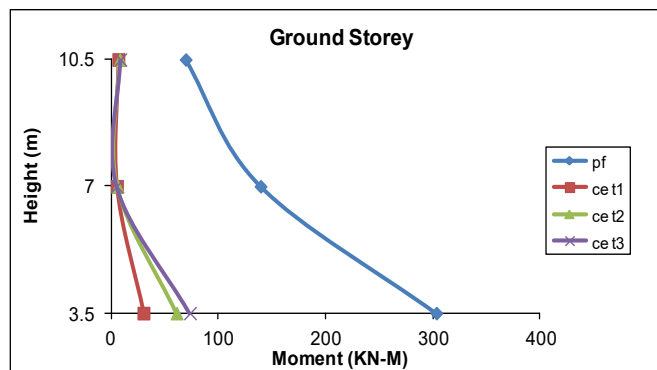


Fig 3.1. (c) Moment due to centre opening in Ground Storey (ce)

Table.3.1 Percentage difference for ground storey centre opening from plane frame (ce)

Table.3.1 (a) Joint Displacement (cm)

Joint Displacement (cm)						Percentage difference		
JOINT	Height	pf	ce t1	Ce t2	ce t3	%pf-cet1	%pf-cet2	%pf-cet3
26	3.5	1.27	0.24	0.20	0.26	80.52	83.57	79.54
27	7	2.71	0.40	0.34	0.43	85.25	87.19	84.11
28	10.5	3.50	0.50	0.42	0.52	85.54	87.80	85.13

Table.3.1 (b) Member end forces (Base Shear) kN

Member end forces (Base Shear) kN						Percentage difference		
MEMBER	Height	pf	ce t1	ce t2	ce t3	%pf-cet1	%pf-cet2	%pf-cet3
59	3.5	136.79	21.78	37.41	42.92	84.07	72.65	68.62
60	7	57.31	10.76	14.43	15.11	81.22	74.82	73.65
61	10.5	14.72	11.44	14.37	15.03	22.28	2.37	-2.10



Table.3.1 (c) Member end forces (Moment) kN-m

Member end forces (Moment) kN-m						Percentage difference		
MEMBER	Height	pf	ce t1	ce t2	ce t3	%pf-cet1	%pf-cet2	%pf-cet3
59	3.5	303.21	30.08	61.02	73.49	90.07	79.87	75.76
60	7	139.29	5.35	6.12	5.01	96.15	95.69	96.40
61	10.5	69.45	6.67	8.02	8.64	90.39	88.45	87.55

V. CONCLUSION

1. From the analysis result it can be observed that the presence of openings in masonry infill at bottom storey is more critical as compared to its presence in upper storey. It is evident from the higher percentage of variation of seismic response parameter for the case when the opening is present in bottom storey.
 2. The presence of openings in corner is more critical as compared to its presence in centre which is evident from the higher displacement in the former case.
 3. Beams are subjected to lesser bending moments with infill panels in comparison to beams in plane frame.
 4. The thickness of the infill wall does have an influence on the global response of the model under seismic action, especially in terms of moments and base shear.
 5. The buildings with infill have enough redundancy to resist earthquake forces.
- have implemented an automatic text detection technique from an image for Inpainting. Our algorithm successfully.

REFERENCES

- [1] C V R MURTY and Sudhir K JAIN, “Beneficial Influence of masonry Infilled Walla on Seismic Performance of RC Frame Buildings” World conference on Earthquake Engineering.
- [2] Murty, C.V.R., and Nagar, A. (1996), “Effect of Brittle Masonry Infills on Displacement and Ductility Demand of Moment Resisting Frames,” Proceedings of Eleventh World Conference on Earthquake Engineering, Acapulco, Mexico.
- [3] Santiago Pujol, Amadeo Benavent-Climent, Mario E Rodriguez and J. Paul Smith-Pardo, (2008) “ Masonry infill Walls: An Effective Alternative For Seismic Strengthening Of Low-Rise reinforced Concrete Building Structures” World Conference on earthquake Engineering.
- [4] Baber T.T. and Noori M. N. (1985). Random Vibration of Degrading Pinching Systems. Journal of Engineering Mechanics, 1010-1026.
- [5] Fick, D. (2008). Experimental Investigation of a Full-Scale Flat-Plate Reinforced Concrete Structure in the Inelastic Range of Response. Ph.D. Dissertation Thesis. Purdue University.
- [6] Matjaz D., Fajfar P. (2005). Simplified Non-linear Seismic Analysis of Infilled Reinforced Concrete Frames. Earthquake Engineering and Structural Dynamics , 49–66.
- [7] C. A. Symakezis and P. G. Asteris, “Influence of Infilled Walls with Openings to the Seismic Response of Plane Frames.
- [8] S. Pujol and D. Fick, (2010), “The test of a full-scale three-story RC structure with masonry infill walls” Engineering Structures.



INNO SPACE
SJIF Scientific Journal Impact Factor
Impact Factor: 8.118



ISSN INTERNATIONAL
STANDARD
SERIAL
NUMBER
INDIA



INTERNATIONAL JOURNAL OF INNOVATIVE RESEARCH

IN SCIENCE | ENGINEERING | TECHNOLOGY

 **9940 572 462**  **6381 907 438**  **ijirset@gmail.com**



www.ijirset.com

Scan to save the contact details