



e-ISSN: 2319-8753 | p-ISSN: 2347-6710

# IJRSET

International Journal of Innovative Research in  
**SCIENCE | ENGINEERING | TECHNOLOGY**

# INTERNATIONAL JOURNAL OF INNOVATIVE RESEARCH

IN SCIENCE | ENGINEERING | TECHNOLOGY

Volume 11, Issue 5, May 2022

**ISSN** INTERNATIONAL  
STANDARD  
SERIAL  
NUMBER  
INDIA

Impact Factor: 8.118

9940 572 462

6381 907 438

[ijrset@gmail.com](mailto:ijrset@gmail.com)

[www.ijrset.com](http://www.ijrset.com)

# Thorax Disease Classification Using Deep Learning

Ms.Aasifa Bagwan<sup>1</sup>, Prof.Anisara Nadhaph<sup>2</sup>, Dr.Gitika Narang<sup>3</sup>

Department of Computer Engineering, Trinity Engineering College, Pune, India<sup>1</sup>

Department of Computer Engineering, Trinity Engineering College, Pune, India<sup>2</sup>

Department of Computer Engineering, Trinity Engineering College, Pune, India<sup>3</sup>

**ABSTRACT:** The task of thorax disease diagnosis on chest X-ray (CXr) pictures is discussed in this work. The majority of available approaches learn a network using global images as input. Thorax disease, on the other hand, frequently occurs in disease-specific (small) localized areas. As a result, the (excessive) irrelevant noisy areas may impact CNN training utilizing a global image. Furthermore, the presence of uneven borders hampered network performance due to poor alignment of some CXr pictures. In this research, we suggest using two-branch architecture called ConsultNet to train discriminative features and satisfy both of these goals at the same time. ConsultNet is made up of two parts. 1) a feature selector bound by an information bottleneck retrieves key disease-specific features based on their relevance. 2) a feature integrator based on spatial and channel encoding improves the latent semantic dependencies in the feature space. ConsultNet combines these distinguishing characteristics to improve thoracic illness categorization in CXRs. Experiments on the ChestX-ray14 and CheXpert datasets have shown that the proposed strategy is effective.

**KEYWORDS:** CXr image classification, x-rays, image classification, ConsultNet.

## I. INTRODUCTION

One of the most popular radiological examinations used to diagnose lung and heart illness is the chest X-ray (CXr). Reading CXRs currently relies primarily on expert knowledge and careful manual observation. Even with extensive clinical training and professional advice, radiologists can make mistakes due to the complicated pathologies and subtle texture changes of distinct lung lesions in pictures. As a result, developing CXr image classification tools to assist clinical practitioners is critical. Many trials in medical image analysis have benefited from the considerable improvement in deep learning. A chest X-ray (radiograph) is a quick and painless screening examination used to diagnose a variety of thoracic abnormalities such as pneumonia, pneumothoraces, and lung nodules. It is cost-effective imaging procedures since it exposes the patient to the least amount of radiation while showing a wide variety of visual diagnostic information. Even for a human viewer, identifying and recognizing the many chest anomalies in chest X-rays is a difficult process.

Wang et al. assess four standard CNN architectures to tell the existence of different pathologies using a global CXr image in previous work on CXr classification. Yao et al. investigate the link between the 14 pathologic labels and global pictures in ChestXray14 by viewing CXr classification as a multi-label recognition problem. They use a DenseNet variation as an image encoder and Long-Short Term Memory Networks (LSTM) to capture dependencies. Kumar et al. look at which loss function is best for training CNNs from the ground up and offer a boosted cascaded CNN for global image classification. In this study, we propose ConsultNet, a novel framework for addressing the aforementioned concerns. The framework is shown. ConsultNet is made up of two parts. To enforce the network to pick crucial, disease-specific characteristics for chest X-ray image classification, we first add a spatial-wise and channel-wise based attention mechanism into the Variational Information Bottleneck (VIB). We call this principle Variational Selective Information Bottleneck in the second place (VSIB). The term VSIB was coined after it was discovered that a uniform information limitation might not encourage the network to focus on as many disease-specific properties as feasible.

Under an information bottleneck restriction of latent feature representation, we achieve the stated goal based on feature importance. It restricts the amount of disease-specific data that passes through the bottleneck. As a result, features of disease-unrelated regions are omitted. Second, to model the latent semantic relationships of different diseases in the feature space, a Spatial-and-Channel Encoding (SCE) module is provided. The SCE module acts as a Feature Integrator, enhancing long-range feature correlations in both spatial and channel dimensions. ConsultNet can now not only choose extract the most important information from CXr images, but also explicitly represent feature semantic

relationships inside a coherent framework. We found that these two modules work together as two collaborative feature learners to make a precise diagnosis. We propose a new constraint, variational selective information bottleneck (VSIB), in this research to force the network to focus on disease-specific features for chest X-ray image categorization. an advantage for disease detection Furthermore, we address the more significant inter-class appearance similarity of chest X-ray pictures by regularising the ConsultNet with a pairwise confusion technique that forces the ConsultNet to forget the patient-specific features.

#### A. Motivation

To classify the CXR image, it is required to capture the correlations of many disorders. The diagnosis is problematic due to the great appearance similarity of chest X-ray pictures since the enormous inter-class similarity may influence discriminative feature learning and reduce classification performance. Even the most powerful deep learning algorithms find the work of chest X-ray picture classification tough due to the combination of the above issues. We propose a new constraint, variational selective information bottleneck (VSIB), in this research to force the network to focus on disease-specific features for chest X-ray image categorization. We focus on disease categorization in a multi-label learning framework, and part of our work is related to the recently proposed InfoMask pneumonia localization approach, which targets at the lesion area localization job.

#### B. Objectives

- To do an extensive study by discriminative feature learning for thorax disease classification in chest X-ray images.
- To work on thorax disease classification in chest X-ray images.
- To create a new framework called ConsultNet, to solve the aforementioned problems and learning discriminative features for CXR image categorization collaboratively.
- To implement this system the following models are used: ConsultNet, Spatial-and-Channel Encoding (SCE), Variational Information Bottleneck (VIB), Variational Selective Information Bottleneck (VSIB).

## II. LITERATURE SURVEY

**Y. Tang, X. Wang et al**, proposed based on Attention-guided curriculum learning for weakly supervised classification and localization of thoracic diseases on chest radiographs. In this study, they showed how to use NLP-mined illness severity level information from radiology reports to help students learn more accurately how to classify and localize thoracic diseases. Future work will include creating organized reports, extracting richer data from reports, such as coarse location of lesions and employing follow-up studies, and mining prevalent illness patterns to aid in the development of more precise predictive models.

**Q. Guan et al**, proposed based work on Thorax disease classification with attention guided convolutional neural network. They suggested a three-branch attention guided convolutional neural network for thorax illness classification in this research. The most discriminative region in the global image can be located using this strategy. On the ChestX-ray14 dataset, extensive trials show that incorporating both global and local cues offers state-of-the-art accuracy. We will continue to look at more accurate localization methods in the future.

**P. Kumar et al**, proposed based on Boosted cascaded convnets for multilabel classification of thoracic diseases in chest radiographs. In this study, they test a set of deep learning approaches for multi-label classification of the ChestX-ray14 dataset and produce results that are comparable to the state-of-the-art. They show promising outcomes for thoracic illness diagnosis by machine. Future work on disease localization and classification performance, on the other hand, is recommended.

**X. Wang et al**, proposed based on TieNet: Text image embedding network for common thorax disease classification and reporting in chest X-rays. In this paper, they introduced a unique text-image embedding network that is coupled with multi-level attention models in this research. For learning a blend of distinct image and text representations, TieNet is implemented in an end-to-end CNN-RNN architecture. Although major advancements in multi-label disease classification have been made, there is still great room for improvement in the quality of generated reports.

**P. Rajpurkar et al.**, proposed based on Deep learning for chest radiograph diagnosis: A retrospective comparison of the CheXNeXt algorithm to practicing radiologists. In this study, the CheXNeXt is a deep learning system that detects various thoracic diseases in frontal-view chest radiographs as well as practising board-certified radiologists. This technique has the potential to improve healthcare delivery and expand access to chest radiograph expertise for the diagnosis of a wide range of acute disorders. More research is needed to see if these outcomes are feasible in a prospective clinical environment.

**J. Cai, L. Lu, et al.**, proposed based on Iterative attention mining for weakly supervised thoracic disease pattern localization in chest X-rays. The researcher described a new data-mining paradigm for localization that combines AM, KP, and MSA. We show how to extract illness areas from chest X-ray datasets using a sophisticated method. Our

method can exploit localization knowledge in current large-scale datasets by exhibiting gains over a traditional CAM-based approach, perhaps enabling for the training of new computer-aided diagnosis tools or more powerful retrospective analysis. The MSA could be improved in the future, possibly employing the atrous convolution.

**E. Pesce, et al.**, proposed based on learning to detect chest radiographs containing pulmonary lesions using visual attention networks. In this paper, they proposed two new neural networks for the detection of pulmonary abnormalities in chest radiography. Both systems mix a large number of pictures with weak labels and a smaller number of manually annotated x-rays. During training, the labelled lesions are employed to provide a type of visual attention feedback to the networks, alerting them of their lesion localization performance.

**J. Irvin et al.**, proposed based on Chexpert: A large chest radiograph dataset with uncertainty labels and expert comparison. They provided the CheXpert dataset, a huge collection of chest radiographs with uncertainty labels and radiologist-labelled reference standard evaluation sets. We test a few alternative ways to dealing with uncertainty and see how well they work on the assessment sets. Our best model exceeds at least two of the three radiologists in the detection of four clinically significant diseases on a test set with a solid ground truth.

**H. H. Pham et al.**, proposed based on Interpreting chest X-rays via CNNs that exploit hierarchical disease dependencies and uncertainty labels. In this paper, they looked into nearly every part of the project, including data cleaning, network architecture, training, and assembly. They developed a new training technique in which sickness and uncertainty label dependencies are efficiently exploited and integrated into advanced CNN training. Extensive testing on the CheXpert dataset revealed that the proposed strategy surpasses the previous state-of-the-art by a wide margin. More crucially, in an independent test, our deep learning algorithm performed on par with experts.

**Y.-X. Tang et al.**, proposed based on automated abnormality classification of chest radiographs using deep convolutional neural networks. We created and analysed multiple deep convolutional neural networks (CNN) for discriminating between normal and pathological frontal chest radiographs in order to assist radiologists and physicians in work list triaging and reporting prioritizing. The study's exceptional diagnostic accuracy demonstrates that deep CNNs may accurately and effectively distinguish between normal and abnormal chest radiographs, thereby improving radiology workflow and patient care.

### III. EXISTING SYSTEM

In previous system present CheXNeXt by using deep learning algorithm to detects several thoracic diseases in frontal-view chest radiographs as well as practising board-certified radiologists. But it must be tested in a prospective clinical context to see if these outcomes are feasible. Because this research was limited to a single institution's dataset, more research will be needed to determine whether these methods are generalizable to datasets from other institutions. TieNet is implemented in an end-to-end CNN-RNN architecture. in that they discussed radiological reports in both auto annotation and reporting tasks. However, they must extend TieNet to include multiple RNNs for learning not only disease words but also their attributes, as well as correlating them and image findings with the description in the generated reports. In previous paper, a more precise localization approach was needed to examine the attention driven three-branch convolutional neural network for thorax illness categorization.

### IV. PROPOSED METHODOLOGY

We propose a new constraint, variational selective information bottleneck (VSIB), in this research to force the network to focus on disease-specific features for chest X-ray image categorization. The suggested selection mechanism takes into account spatial- and channel-wise attention and is used to determine the relevance of features. We do not require the model to detect the positions of the entire lesion area because of the implicit learning for disease-related features in VSIB. Instead, we just focus on the most discriminative regions for classification. With a Spatial and Channel Encoding module, we propose to improve the semantic interdependence of multi-disease characteristics in the feature space. We propose that ConsultNet be trained with a pairwise confusion technique to address the inter-class sample similarity problem in chest X-ray pictures.

**A. Architecture**

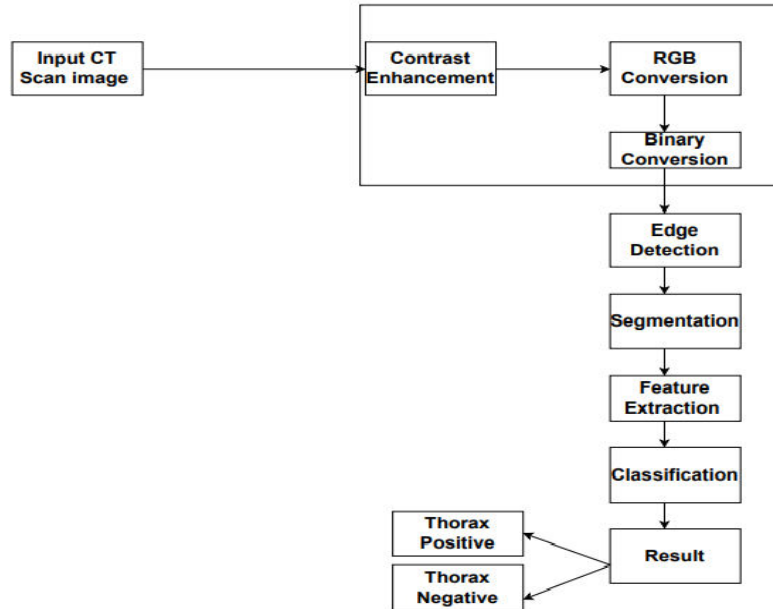


Fig.1.System Architecture

**B. Algorithm**

**1.Convolutional Neural Network**

The structure of CNN algorithm includes two layers. First is the extraction layer of features in which each neuron's input is directly connected to its previous layer's local receptive fields and local features are extracted. The spatial relationship between it and other features will be shown once those local features are extracted. The other layer is feature\_map layer; Every feature map in this layer is a plane, the weight of the neurons in one plane are same. The feature plans structure makes use of the function called sigmoid. This function known as activation function of the CNN, which makes the feature map have shift in difference. In the CNN each convolution layer is come after a computing layer and its usage is to find the local average as well as the second extract; this extraction of two feature is unique structure which decreases the resolution.

**2.K-Means**

K-Means is the one of the unsupervised learning algorithm for clusters. Clustering the image is grouping the pixels according to the same characteristics. In the k-means algorithm initially we have to define the number of clusters k. Then k-cluster center are chosen randomly. The distance between the each pixel to each cluster centers are calculated. The distance may be of simple Euclidean function. Single pixel is compared to all cluster centers using the distance formula. The pixel is moved to particular cluster which has shortest distance among all. Then the centroid is re-estimated. Again each pixel is compared to all centroids. The process continuous until the center converges.

**Implementation Steps for Proposed System**

- Step 1: Select the dataset.
- Step 2: Perform feature selection using information gain and ranking
- Step 3: Apply Classification algorithm CNN
- Step 4: Calculate each Feature fx value of input layer
- Step 5: Calculate bias class of each feature
- Step 6: The feature map is produced and it goes to forward pass input layer
- Step 7: Calculate the convolution cores in a feature pattern Step 8: Produce sub sample layer and feature value.
- Step 9: Input deviation of the kth neuron in output layer is Back propagated.
- Step 10: Finally give the selected feature and classification results.

**V. RESULT & ANALYSIS**

The Experiments are done by personal computer with configuration: Intel (R) Core (TM) i3-2120 CPU @ 3.30GHz,



4GB memory, Windows 7, MySQL 5.1 backend database and JDK 1.8. The application uses web application tool for design code in Eclipse and execute on Tomcat server.

Positive (P) : Observation is positive. Negative (N) : Observation is not positive.

True Positive (TP) : Observation is positive, and is predicted to be positive.

False Negative (FN) : Observation is positive, but is predicted negative.

True Negative (TN) : Observation is negative, and is predicted to be negative.

False Positive (FP) : Observation is negative, but is predicted positive.

Accuracy =  $\frac{TP + TN}{TP + FP + TN + FN}$

Precision =  $\frac{TP}{TP + FP}$  Recall =  $\frac{TP}{TP + FN}$

F1-Measure =  $2 * \frac{Precision * Recall}{Precision + Recall}$ .

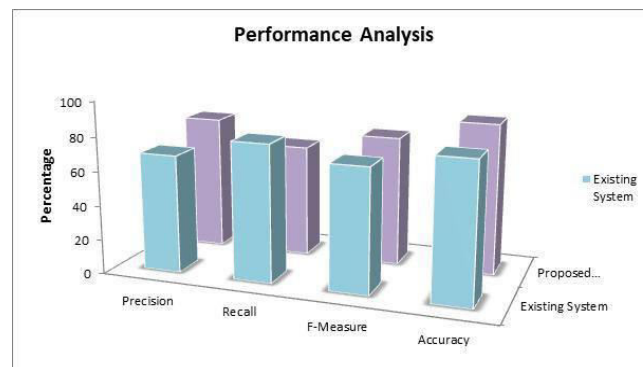


Fig.2.Result

	Existing System	Proposed System
Precision	68.45	78.70
Recall	79.44	65.64
F-Measure	72.11	74.31
Accuracy	80.29	87.26

Table.1.Comparative Analysis

## VI. CONCLUSION

In this research, we suggest using two-branch architecture called ConsultNet to train discriminative features and satisfy both of these goals at the same time. ConsultNet is made up of two parts. First, a feature selector bound by an information bottleneck retrieves key disease-specific features based on their relevance. Second, a feature integrator based on spatial and channel encoding improves the latent semantic dependencies in the feature space. ConsultNet combines these distinguishing characteristics to improve thoracic illness categorization in CXRs. Experiments using the ChestX-ray14 and CheXpert datasets show that the proposed strategy is effective. We may propose annotating a few ground-truth of lesion region in the future, and so solving the disease recognition challenge by taking ideas from saliency detection.

## REFERENCES

- [1] Y. Tang, X. Wang, A. P. Harrison, L. Lu, J. Xiao, and R. M. Summers, "Attention-guided curriculum learning for weakly supervised classification and localization of thoracic diseases on chest radiographs," in Proc. Int. Workshop Mach. Learn. Med. Imag. Cham, Switzerland: Springer, 2018, pp. 249–258.
- [2] Q. Guan, Y. Huang, Z. Zhong, Z. Zheng, L. Zheng, and Y. Yang, "Thorax disease classification with attention guided convolutional neural network," Pattern Recognit. Lett., vol. 131, pp. 38–45, Mar. 2020.
- [3] P. Kumar, M. Grewal, and M. M. Srivastava, "Boosted cascaded convnets for multilabel classification of thoracic diseases in chest radiographs," in Proc. Int. Conf. Image Anal. Recognit. Cham, Switzerland: Springer, 2018, pp.



546–552

- [4] X. Wang, Y. Peng, L. Lu, Z. Lu, and R. M. Summers, “TieNet: Textimage embedding network for common thorax disease classification and reporting in chest X-rays,” in Proc. IEEE/CVF Conf. Comput. Vis. Pattern Recognit., Jun. 2018, pp. 9049–9058.
- [5] P. Rajpurkar et al., “Deep learning for chest radiograph diagnosis: A retrospective comparison of the CheXNeXt algorithm to practicing radiologists,” PLoS Med., vol. 15, no. 11, Nov. 2018, Art. no. e1002686
- [6] J. Cai, L. Lu, A. P. Harrison, X. Shi, P. Chen, and L. Yang, “Iterative attention mining for weakly supervised thoracic disease pattern localization in chest X-rays,” in Proc. Int. Conf. Med. Image Comput. Comput.- Assist. Intervent. Cham, Switzerland: Springer, 2018, pp. 589–598.
- [7] E. Pesce, S. J. Withey, P.-P. Ypsilantis, R. Bakewell, V. Goh, and G. Montana, “Learning to detect chest radiographs containing pulmonary lesions using visual attention networks,” Med. Image Anal., vol. 53, pp. 26–38, Apr. 2019.
- [8] J. Irvin et al., “Chexpert: A large chest radiograph dataset with uncertainty labels and expert comparison,” in Proc. AAAI, 2019, pp. 590–597.
- [9] H. H. Pham, T. T. Le, D. Q. Tran, D. T. Ngo, and H. Q. Nguyen, “Interpreting chest X-rays via CNNs that exploit hierarchical disease dependencies and uncertainty labels,” 2019, arXiv:1911.06475. [Online]. Available: <http://arxiv.org/abs/1911.06475>
- [10] Y.-X. Tang et al., “Automated abnormality classification of chest radiographs using deep convolutional neural networks,” npj Digit. Med., vol. 3, no. 1, pp. 1–8, Dec. 2020.



**INNO SPACE**  
SJIF Scientific Journal Impact Factor  
**Impact Factor: 8.118**



**ISSN** INTERNATIONAL  
STANDARD  
SERIAL  
NUMBER  
INDIA



# INTERNATIONAL JOURNAL OF INNOVATIVE RESEARCH

IN SCIENCE | ENGINEERING | TECHNOLOGY

 **9940 572 462**  **6381 907 438**  **ijirset@gmail.com**



[www.ijirset.com](http://www.ijirset.com)

Scan to save the contact details