



e-ISSN: 2319-8753 | p-ISSN: 2347-6710

IJIRSET

International Journal of Innovative Research in
SCIENCE | ENGINEERING | TECHNOLOGY



INTERNATIONAL JOURNAL OF INNOVATIVE RESEARCH

IN SCIENCE | ENGINEERING | TECHNOLOGY

Volume 11, Issue 9, September 2022

ISSN INTERNATIONAL
STANDARD
SERIAL
NUMBER
INDIA

Impact Factor: 8.118

Utilisation of Waste Plastic in Construction of Flexible Pavement

Praful Shashikant Patil, Prof.W.S.Marathe

Department of Civil Engineering, S.S.V.P.S.S B.S. Deore College of Engineering, Dhule (MS), India

ABSTRACT: On the one hand, there's an ever-increasing amount of traffic on the roads, and on the other, solid waste management is where much of the focus is. A higher volume of traffic has been seen recently. As a result, the road's load capacity will be raised. These concerns are being addressed in part by our ongoing efforts. Coated stone made from plastic trash such as grocery bags, coffee cups, water bottles, pipe fittings, toy parts, etc., may be utilised for roadway building. In this manner, a road with a length of 1 kilometer and a width of 3.375 meters may use 10 tens of thousands of bags without developing potholes and increasing in strength. Second, after being ground into a powder, old tiers are mixed with bitumen before being added to plastic-coated aggregate.

KEYWORDS: Plastic Waste, Bitumen, Aggregates, Plastic Roads.

I. INTRODUCTION

Disposal of the many waste products of today's industries has become an enormous challenge. Due to the fact that many of these materials are not biodegradable, they contribute to environmental degradation in the immediate area. Common materials used for road building include dirt, stone aggregate, sand, bitumen, cement, etc. Due to the finite nature of natural resources, their availability is dwindling. The expense of obtaining high-quality raw materials is also rising. Because of this concern, researchers are exploring possible solutions, such as using industrial waste products for roadway building. If these resources are put to good use in highway building, we may be able to alleviate some of the pollution and disposal issues. Several acres of land near facilities around the nation have been taken up by these solid wastes due to a lack of other outlets. The testing of these materials and the development of specifications to increase the use of these industrial wastes in road construction, where larger economic returns may be achievable, were deemed expedient in light of the pressing need for mass usage of these solid wastes in India. Low-volume roads in many sections of the nation might benefit from the exploration of this material. Attempts should be made to optimise the usage of solid wastes in various layers of road pavement, and the relevant specifications should be created.

Using these scraps to build a low-traffic road seems wasteful, but studying the pavement's performance after it's been put in place might provide two results:

As a result,

- (a) Valuable land may be freed from large garbage dumps, and
- (b) The natural reserve of aggregate can be protected.

Even though they're convenient for consumers, plastics aren't great for the environment since they're often not biodegradable. hazardous waste is disposed of by either landfilling or incineration. Plastics, although initially helpful to society, end up becoming a nuisance to the environment. Plastics' superior properties when molten have aided the search for environmentally sound ways to dispose of unwanted plastics. In the current state, owing to fast infrastructure development, a road surface with tidy bitumen may produce bleeding on hot climate, may develop cracks in cold climate, possess lower loads bearing ability, and causes suffer damages of greater axle load. According to reports, the useful life of bituminous overplay has decreased by a factor of 7-8, from a historical average of 5-6 years to the current average of roughly 3-4 years. Improved pavement performance, environmental protection, and cost-effective roads can only be achieved by increasing India's use of waste systems in hot bituminous mixes. When chosen thermoplastics and shredded plastic from discarded trash, natural plastic, or any other acceptable elastomers are included into bitumen, the resulting material is known as polymer and plastics modified bitumen, or modified bitumen for short.

II. LITERATURE SURVEY

1. "Utilization of Plastic wastes in Construction of Flexible Pavements"

Plastics are convenient for consumers but harmful to the environment since they are not biodegradable. They are often discarded in landfills or burned together with other potentially dangerous items. With the improved binding properties of molten plastics, a more secure means of disposing of trash plastics has been discovered: employing them in road paving. Nearly 170 degrees Celsius of heat is applied to the aggregate. Waste plastics (carry bags, cups, and thermocole.) manufactured from Polyethylene, Polypropylene, and Polystyrene are then added to the mixture after being processed.

2. "Roads from Plastic Waste. The Indian Concrete Journal."

Betel nut wrappers, chocolate and chip bags, chip and candy boxes, handbag linings, cold drink bottles, and any other kind of plastic packaging all contribute to a serious ecological and monetary crisis. Massive amounts of energy and other natural resources are used up as a result, which has a number of negative effects on the environment. Due to its low cost, high durability, and light weight, plastic is widely used in factories, construction sites, and shipping companies to make handling and transporting items easier.

3. "Laboratory Investigations Of The Properties Of Concrete Containing Recycled Plastic Aggregates."

Studies on the potential of by-products to improve the qualities of concrete have been going on for quite some time. Industry waste items including fly ash, silica fume, ground granulated blast furnace slag (GGBS), glass cullet, etc., have been used in building projects more often in recent decades. Depending on their chemical make-up and particle size, industrial by-products may be used in concrete as either a partial aggregate replacement or a partial cement replacement.

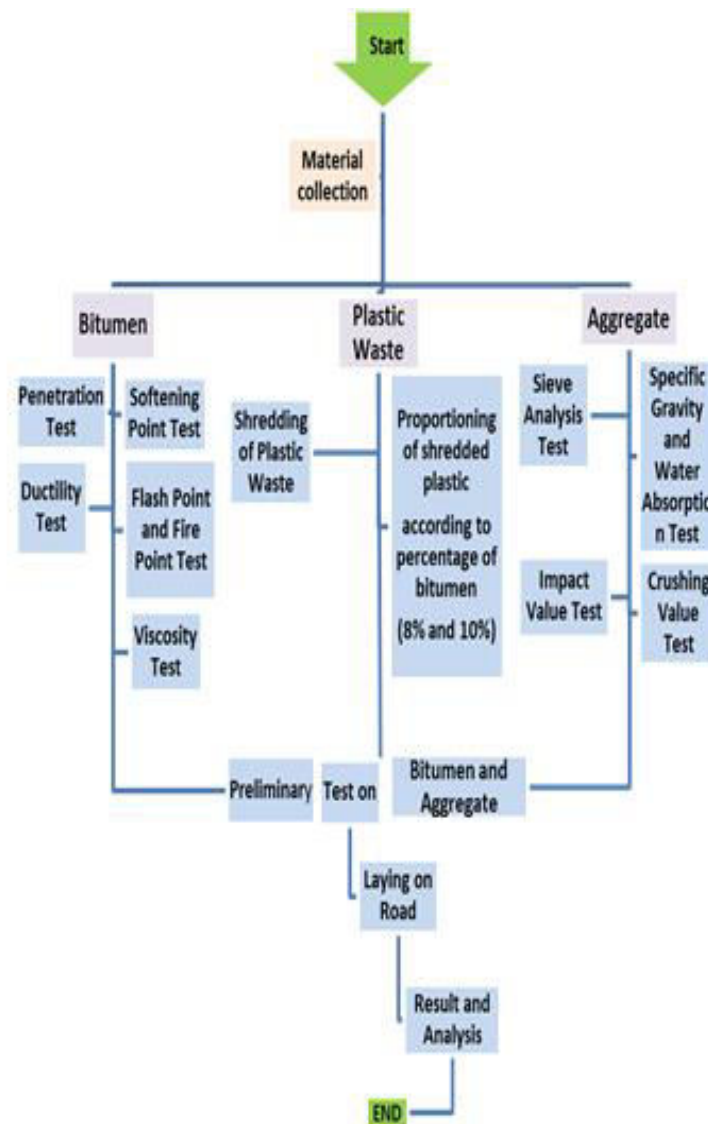
4. "A review of the use of recycled solid waste materials in asphalt pavements"

Large quantities of quarry aggregates are used in the building and maintenance of UK highways. By switching to secondary (recycled) materials from primary (virgin), we may lessen the burden on landfills and cut down on the need for extraction. However, the widespread use of secondary materials in such applications has been hampered by concerns concerning lower road performance and increased expenses.

5. "Use of Waste Plastic in Construction of Bituminous road"

The use of bottles, containers, and packing strips, etc., is on the rise. Thus, there is a corresponding rise in plastic trash. This causes a number of issues in the natural world. There are numerous environmental worries caused by today's trash, which will persist in the ecosystem for a long time. Therefore, with the advancement of technology in every sector, it is essential to make efficient use of the trash. The plastic scraps are used to manufacture a wide variety of by-products.

III. PROPOSED SYSTEM ARCHITECTURE



As cities grow and more people move into them, more roads are built. Furthermore, bitumen reserves are crucial to the construction of new roads. Since bitumen comes from unconventional sources, there is a chance that there may be a scarcity of the substance in the future.

While India's economic and social growth would benefit from a more extensive road network, waste management is a serious challenge for developing nations. With bitumen in short supply, expediting road building will need some creative problem solving.

1) Aggregate:

We utilise aggregate, which is manufactured from crushed stone that has had its particle size reduced for construction purposes. Here are some examples of different kinds of aggregate:

Course grain - 4.75mm above

Fine grain – 4.75mm below

Grid – 600mic, 300mic, 150mic, 75mic



Photo No. 3.1:- Aggregate

2) Waste Plastic:

Waste plastic in the shredded form



Photo No.3.2:- Shredded plastic waste

3) Bitumen:

Typically, bitumen grades 60/70 are utilised for construction. The process of partial distillation of crude petroleum yields bitumen.



Photo No. 3.3:- 60/70 grade bitumen

All These materials were collected from the waste recycler dealer.

Waste plastic shredding:

The plastic shredding machine, which consists of an agglomerater and a scrap grinder, is used to cut the plastic into pieces that are between 2.36mm and 4.75mm in size.

The Agglomerater is used to shred thin films of poly-ethylene and poly-propylene carry bags, while the Scrap Grinder is used to shred solid plastic. These include, but are not limited to, plastic bottles, drip lines, electrical cable lines, etc.

IV. CONCLUSION

The following conclusion can be drawn from this work:-

- 1) Use of recycled plastic enhances the mixture's cohesiveness..
- 2) Experiments showed that a yield of 8% from used plastic was best.
- 3) Bitumen's qualities, such as its penetrating power and its pliable melting point, were boosted by the use of the recycled plastic.
- 4) In regions where temperatures often exceed 50 degrees Celsius, plastic roads may also be built.
- 5) Waste plastic on roadways boosts the stability value and durability to a large amount.
- 6) This approach is incredibly eco-friendly since it utilises the leftover plastic which is being discarded in seas, landfills etc.
- 7) Using plastic in lieu of bitumen may drastically cut building costs.
- 8) We can save a lot of money on road repairs in the future if we can make roads last longer and be less prone to damage.

REFERENCES

- 1) Vasudevan R., Rajasekaran S.,(2005)"Utilization of Plastic wastes in Construction of Flexible Pavements"(Reuse of plastic wastes-apath-breaking initiative) GPEC 2005 Paper Abstract #27.
- 2) Verma, S.S. (2008) Roads from Plastic Waste. The Indian Concrete Journal, November, 43-44.
- 3) K SWAMY 1, MOHD YOUNUS MOHIUDDIN , MA HALEEM(2016).“Laboratory Investigations Of The Properties Of Concrete Containing Recycled Plastic Aggregates.”
- 4) Yue Huang, Roger N., Bird, Oliver Heidrich (2006), "A review of the use of recycled solid waste materials in asphalt pavements ", School of Civil Engineering and Geosciences, Newcastle University, UK.
- 5) Swami, Vital. (2012) Use of Waste Plastic in Construction of Bituminous Roads. International Journal of Engineering Science and Technology (IJEST), 4, 2351-2355.



INNO SPACE
SJIF Scientific Journal Impact Factor
Impact Factor: 8.118



ISSN INTERNATIONAL
STANDARD
SERIAL
NUMBER
INDIA



INTERNATIONAL JOURNAL OF INNOVATIVE RESEARCH

IN SCIENCE | ENGINEERING | TECHNOLOGY

 **9940 572 462**  **6381 907 438**  **ijirset@gmail.com**



www.ijirset.com

Scan to save the contact details