



e-ISSN: 2319-8753 | p-ISSN: 2347-6710

IJIRSET

International Journal of Innovative Research in
SCIENCE | ENGINEERING | TECHNOLOGY

INTERNATIONAL JOURNAL OF INNOVATIVE RESEARCH

IN SCIENCE | ENGINEERING | TECHNOLOGY

Volume 12, Issue 4, April 2023

ISSN INTERNATIONAL
STANDARD
SERIAL
NUMBER
INDIA

Impact Factor: 8.423

9940 572 462

6381 907 438

ijirset@gmail.com

www.ijirset.com

An Empirical Study on How AI is Disrupting Market Research

Mohd Shoaib Sayyed, Aryaman rawat, Prof Prithwiraj Das

MBA Student – AIMS IBS Business School, India

MBA Student – AIMS IBS Business School, India

AIMS IBS Business School, India

ABSTRACT: Man-made reasoning (computer-based intelligence) is quickly disturbing the statistical surveying industry by offering a large number of advantages, like expanded proficiency, further developed precision, and decreased costs. With the capacity to gather, break down, and decipher immense measures of information continuously, simulated intelligence is significantly altering how organizations direct statistical surveying. This theory gives an outline of how computer-based intelligence is upsetting statistical surveying, remembering its effect on customary examination techniques, the benefits and difficulties of involving artificial intelligence in statistical surveying, and the future heading of the business. As artificial intelligence proceeds to develop and improve, it is normal to turn into a fundamental device in the statistical surveying process, permitting organizations to acquire a more profound comprehension of customer conduct and pursue more educated choices.

Artificial intelligence is changing the statistical surveying industry in various ways. To begin with, it is empowering specialists to gather and dissect information from different sources, including web-based entertainment, client audits, and online discussions. This information can then be utilized to recognize patterns and experiences that might have been challenging to reveal utilizing conventional examination strategies.

Second, artificial intelligence is working on the precision of statistical surveying by lessening the gamble of human mistakes. Via robotizing certain undertakings, for example, information cleaning and examination, man-made intelligence can assist with guaranteeing that the exploration is more dependable and steady.

Planning man-made intelligence will keep on assuming an undeniably significant part in statistical surveying. As simulated intelligence calculations become more complex and information turns out to be all the more promptly accessible, almost certainly, we will see much more creative utilization of man-made intelligence in this field. Eventually, the utilization of computer-based intelligence in statistical surveying can change how organizations comprehend and draw in their clients, making it an astonishing region to watch in the years to come.

I. INTRODUCTION

Man-made consciousness (computer-based intelligence) is a part of software engineering that arrangements with making smart machines that can perform undertakings that typically require human knowledge, for example, visual insight, discourse acknowledgment, independent direction, and language interpretation. Man-made intelligence is accomplished by making calculations that can investigate, gain from, and pursue choices given a lot of information.

The idea of man-made intelligence has existed for a long time, yet ongoing advances in registering power and information accessibility have made it a reality. Today, artificial intelligence is utilized in a large number of uses, including menial helpers, picture and discourse acknowledgment, independent vehicles, extortion identification, and clinical determination.

There are a few unique sorts of man-made intelligence, including rule-based frameworks, AI, and profound learning. Rule-based frameworks are customized with a bunch of decisions that direct how they ought to act in specific circumstances. AI includes taking care of a lot of information in calculation and permitting it to learn and work on its presentation over the long run. Profound learning is a subset of AI that utilizes complex brain organizations to perceive designs in information.

Man-made intelligence can change numerous ventures and work on our day-to-day routines in endless ways. Nonetheless, it raises significant moral, legitimate, and social worries that should be addressed. As computer-based



intelligence proceeds to advance and turn out to be more modern, we really must guarantee that it is created and utilized capably and morally.

II. RESEARCH METHODOLOGY

Computerized reasoning (artificial intelligence) is upsetting customary examination strategy in numerous ways. The utilization of simulated intelligence in research offers additional opportunities for the assortment, examination, and translation of information, and is changing the exploration scene in more than one way.

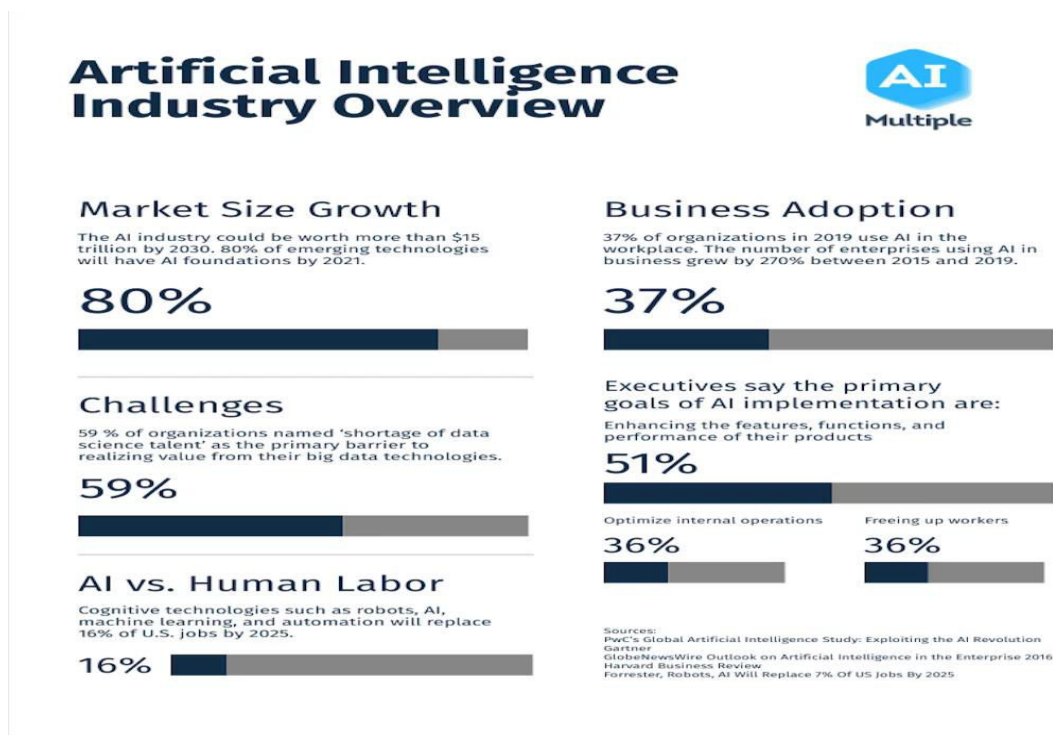
One of the critical benefits of involving artificial intelligence in research is the capacity to gather information from a wide assortment of sources. This incorporates organized information, like studies or value-based information, as well as unstructured information, for example, web-based entertainment posts, client audits, or online gatherings. By investigating this information, simulated intelligence calculations can assist scientists with recognizing examples, patterns, and bits of knowledge that would have been hard to reveal utilizing conventional examination techniques. This can furnish specialists with a more far-reaching comprehension of customer conduct and inclinations.

Notwithstanding further developed information assortment, simulated intelligence can likewise expand the proficiency of the examination interaction. Artificial intelligence calculations can mechanize a considerable lot of the tedious and monotonous errands related to research, for example, information cleaning, coding, and investigation. This can assist analysts with saving time and assets, and to zero in on their endeavors on additional essential errands, for example, distinguishing research questions, planning studies, and deciphering discoveries.

Nonetheless, the utilization of simulated intelligence in research likewise presents various difficulties. For instance, there are worries about protection and security, and the potential for simulated intelligence calculations to propagate inclinations or make erroneous expectations. Moreover, there is a requirement for scientists to be prepared in simulated intelligence procedures and strategies to capitalize on these devices.

By and large, the utilization of man-made intelligence in research can reform how the examination is directed, and furnish scientists with new experiences into customer conduct and inclinations. As artificial intelligence calculations become more complex and information turns out to be all the more promptly accessible, almost certainly, we will see considerably more imaginative uses of man-made intelligence in this field.

Data Analysis & Interpretation





Computer-based intelligence market/industry size is a dubious term that is deciphered distinctively by various organizations. Undertakings need to grasp the fine print in the reports to figure out the extent of the market. While certain organizations remember just incomes from simulated intelligence organizations for the market, others incorporate advantages that all organizations drive because of simulated intelligence.

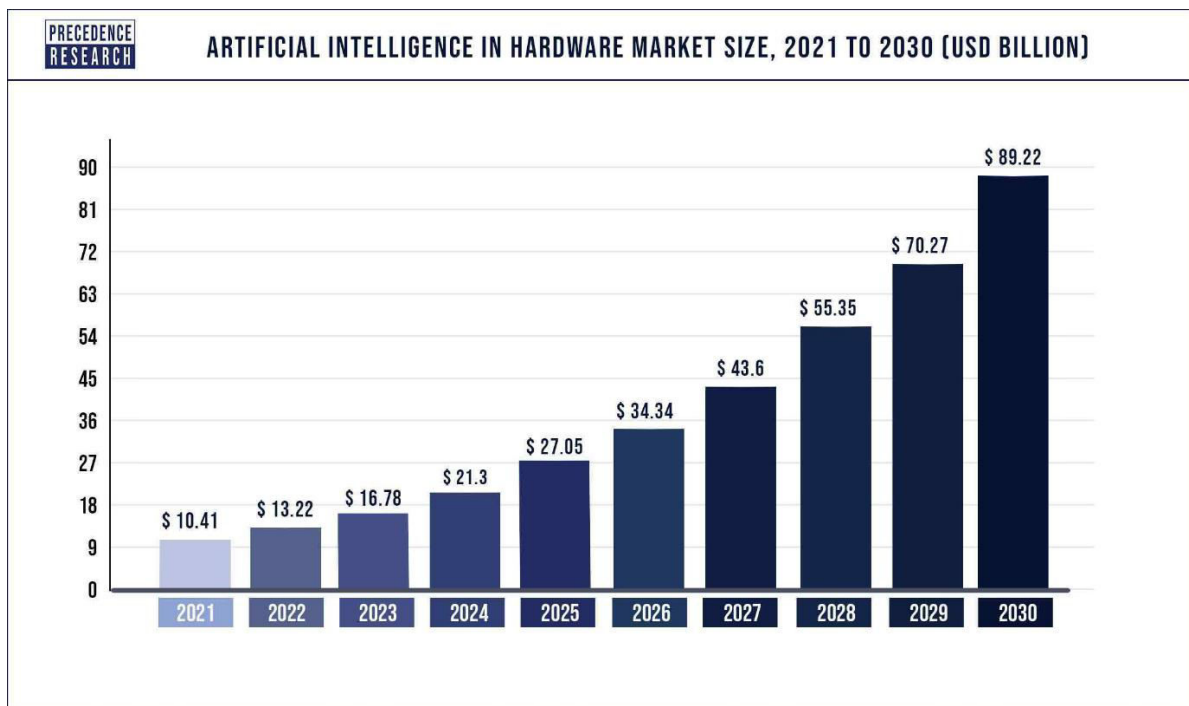
1. Worldwide spending on mental and simulated intelligence frameworks will arrive at more than \$204 billion out of 2025
2. Simulated intelligence industry will produce incomes of \$119 billion a year by 2025.
3. The man-made intelligence market will develop into a \$190 billion industry by 2025.
4. The wearable man-made brainpower market will reach \$180 billion by 2025.
5. The man-made intelligence industry could be worth more than \$15 trillion by 2030.
6. By 2030, China will be the greatest man-made intelligence market, representing 26% of the worldwide man-made intelligence portion of the overall industry.
7. Pervasiveness of artificial intelligence
8. 90% of business venture applications will utilize artificial intelligence by 2025
9. There will be 8 billion voice associates by 2023

Explanations behind artificial intelligence commonness:

Man-made consciousness has come into the standard since it permits us to figure out an undeniably enormous measure of information continuously. Without a doubt, overall information will become 61% to 175 zettabytes by 2025.

Computer-based intelligence implanted in examination and another showcasing programming will let loose more than 33% of information experts in advertising associations by 2022. This will empower them to zero in on other business needs as opposed to investing energy in manual cycles like personalization, lead scoring, oddity discovery, advertising execution on the board, and detailing.

45% of absolute financial increases will come from invigorating shopper interest and item improvement.



The sending and the headways of dynamic equipment connected with man-made brainpower applications will prompt a development on the lookout. Because of cutting-edge improvements in the processing applications and gathering of

large information, the market is supposed to develop. Significant parts of man-made reasoning equipment are organizing capacity and PC. Man-made consciousness equipment is broadly embraced in different enterprises like telecom, banking, and IT. What's more, the development of these businesses is supposed to drive the market of man-made reasoning equipment before long. Accessibility of rapid Web and expansion in the number of Web shoppers across the globe is driving the development of the market. Utilization of mechanical technology and man-made reasoning in a wide range of enterprises will provoke interest in the equipment.

Aside from the use of computerized reasoning equipment in various businesses, it's utilized in profound learning and AI will likewise speed up the development. The utilization of this equipment has given an open door to organizations to break down their information in a significantly less measure of time. The absence of a man-made brainpower master will limit the development of the market. Different guidelines connecting with the computerized reasoning equipment will likewise be difficult for the equipment market before very long. Because of the absence of conventions to be followed and the shortfall of the principles expected in the man-made consciousness equipment are restricting the development of this market. The restricted measure of preparing information and the lesser measure of profits on the put-away cash will likewise hamper the development of the man-made brainpower equipment market in the estimated period. Progressions in large information and the advancements engaged with examination we'll attempt the market before very long.

Suggestions & Learnings

Man-made reasoning (artificial intelligence) can upset statistical surveying via robotizing a considerable lot of the manual undertakings engaged with the cycle, empowering specialists to break down a lot of information rapidly and precisely, and giving bits of knowledge that were beforehand difficult to get.

Here are a few ideas and learnings for how simulated intelligence can disturb statistical surveying:

1. **Use man-made intelligence to mechanize information assortment and investigation:** simulated intelligence can be utilized to gather and dissect information from different sources, including virtual entertainment, online discussions, and client input. This can assist specialists with recognizing patterns and examples that would be challenging to physically identify.
2. **Execute artificial intelligence-controlled prescient investigation:** computer-based intelligence can assist specialists with making more precise forecasts about market patterns, purchaser conduct, and item execution. This can assist organizations with settling on informed conclusions about advertising procedures, item advancement, and estimating.
3. **Use simulated intelligence-controlled chatbots for client commitment:** computer-based intelligence-fueled chatbots can be utilized to draw in clients progressively, giving them customized proposals and tending to their interests. This can assist organizations with further developing consumer loyalty and reliability.
4. **Influence man-made intelligence for picture and video examination:** simulated intelligence can be utilized to investigate pictures and recordings to recognize item arrangements, brand logos, and other significant information. This can assist organizations with understanding how their items are being utilized and seen on the lookout.
5. **Carry out man-made intelligence-fueled examination:** simulated intelligence can be utilized to break down virtual entertainment posts and other web-based content to decide the opinion of clients towards a brand or item. This can assist organizations with understanding how their clients see their image and make upgrades where fundamental
6. **Use artificial intelligence to further develop review plans and examination:**
7. **Use artificial intelligence to advance evaluation and advancements**
8. **Use a computer-based to recognize arising patterns**
9. **Use artificial intelligence-controlled proposal motors:**
10. **Influence artificial intelligence for market division:**

IV. CONCLUSION

All in all, artificial intelligence is upsetting the statistical surveying industry in different ways. Its capacity to handle tremendous measures of information continuously, recognize designs, and produce bits of knowledge is upsetting the business. Via computerizing information investigation and reportage, artificial intelligence has sped up and



effectiveness of statistical surveying. This has permitted organizations to acquire bits of knowledge all the more rapidly and go with information-driven choices that are more precise and solid. Moreover, artificial intelligence has made it conceivable to dissect unstructured information, for example, online entertainment and client input, which was already unrealistic. This has opened up new roads for organizations to grasp their clients' perspectives and inclinations.

One of the main advantages of artificial intelligence in statistical surveying is its capacity to lessen predisposition. With AI calculations, simulated intelligence can recognize examples and bits of knowledge that people could miss or disregard. This implies that organizations can pursue choices given genuine information as opposed to abstract suppositions. Besides, computer-based license has made it simpler for private companies to lead statistical surveying. Via robotizing the interaction, computer-based intelligence has made it workable for more modest organizations to get similar degrees of experience associations. This has made the market more aggressive and permitted organizations, everything being equal, to pursue better-educated choices.

REFERENCES

1. K. Ammon (1993). The incompleteness theorem of Gödel is automatically shown. Artificial intelligence
2. Bacchus, F. GROVE, A. Halpern, J.Y. & koller, D 1992. From statistics to beliefs. In proceeding of the 10th national conference on artificial intelligence
3. Amit, D., Gutfreund, H., and Sompolinsky, H. (1985). Spin-glass models of neural networks. *Physical Review, A* 32:1007-1018.
4. <https://plagiarismdetector.net/>



INNO SPACE
SJIF Scientific Journal Impact Factor
Impact Factor: 8.423



ISSN INTERNATIONAL
STANDARD
SERIAL
NUMBER
INDIA



INTERNATIONAL JOURNAL OF INNOVATIVE RESEARCH

IN SCIENCE | ENGINEERING | TECHNOLOGY

9940 572 462 **6381 907 438** **ijirset@gmail.com**



www.ijirset.com

Scan to save the contact details