



e-ISSN: 2319-8753 | p-ISSN: 2347-6710

IJRSET

International Journal of Innovative Research in
SCIENCE | ENGINEERING | TECHNOLOGY

INTERNATIONAL JOURNAL OF INNOVATIVE RESEARCH

IN SCIENCE | ENGINEERING | TECHNOLOGY

Volume 12, Issue 4, April 2023

ISSN INTERNATIONAL
STANDARD
SERIAL
NUMBER
INDIA

Impact Factor: 8.423

9940 572 462

6381 907 438

ijirset@gmail.com

www.ijirset.com



Review and Analysis of Signature Verification System Using Image Processing Technique

Aroshi Sharma, Suraj Pal

Department of Computer Science, Golden College of Engineering and Technology, Gurdaspur, India.

ABSTRACT— Signature check and acknowledgment is an innovation that can improve security in our everyday exchange held in the public eye. This paper exhibits a novel methodology for disconnected mark check. Right now signature check utilizing neural system is anticipated, where the mark is composed on a paper are acquired utilizing a scanner or a camera caught and introduced in a picture group. For confirmation of mark, the proposed technique depends on geometrical and factual component extraction and afterward the whole database, highlights are prepared utilizing neural system. The separated highlights of examination mark are contrasted and the recently prepared highlights of the reference signature. This procedure is reasonable for different applications, for example, bank exchanges, travel papers with great validation results and so on.

KEYWORDS: Security, Signature Verifier, False Acceptance Rate (FAR), Image Processing, Edge Detection.

I. INTRODUCTION

A mark might be named a social biometric, as it can alter contingent upon numerous basics, for example, outlook, fatigue, and so forth. The critical parts of robotized signature acknowledgment and confirmation have been, for quite a while, a genuine driving force for analysts. Investigation into signature check has been enthusiastically sought after for various years [1] is as yet being investigated (particularly in the disconnected mode). Mark acknowledgment and confirmation includes two independent however firmly related assignments: one of them is recognizable proof of the mark proprietor, and the other is the choice about whether the mark is certified or produced. Likewise, contingent upon the need, signature acknowledgment and check issue is placed into two significant classes: (I) online mark acknowledgment and confirmation frameworks (SRVS) and (ii) disconnected SRVS. Prior approaches depicts the novel framework for disconnected mark check, in the novel framework both static and pseudo unique highlights are removed as unique sign, which is prepared by Discrete Wavelet Transform (DWT) to improve the distinction in time space between a certifiable mark and its falsification. Likewise author free model which decreases the example acknowledgment issue to a 2-class issue, thus, makes it conceivable to assemble vigorous mark confirmation frameworks in any event, when hardly any marks per essayist are accessible. Beneficiary Operating Characteristic (ROC) bends is utilized to improve the presentation of the proposed framework [2]. Analyses are carted out utilizing both away line frameworks, including the separation of marks composed on a bit of paper, and on-line frameworks, in which dynamic data of the marking procedure, (for example, speed and increasing speed) is additionally accessible.

Usage of the signature as a verification technique has just become a custom in the western development and is regarded among the others. The mark is an acknowledged verification of personality of the individual in an exchange taken for their benefit. Along these lines the clients are bound to favour this sort of automated confirmation technique. Various classifiers, for example, Support Vector Machines (SVMs) and Hidden Markov Models (HMMs), have additionally been fruitful in disconnected mark check; SVMs giving a general upgraded result than the HMM-based methodology.[3] In view of the meanings of mark, it can prompt two unique methodologies of mark confirmation.

- A. **Off-Line Signature Verification-** This methodology depends on static qualities of the mark which are invariant. Right now confirmation, turns into an average example acknowledgment task realizing that varieties in signature design are inescapable; the errand of mark validation can be limited to drawing the edge of the scope of certified variety. In the disconnected mark check strategies, pictures of the marks composed on a paper are gotten utilizing a scanner or a camera.
- B. **On-Line Signature Verification-** This is the second kind of mark confirmation strategy. This methodology depends on powerful attributes of the way toward marking. This confirmation utilizes marks that are caught by pressure delicate tablets that extricate dynamic properties of a mark notwithstanding its shape. Dynamic highlights



incorporate the quantity of request of the strokes, the general speed of the mark and the pen pressure at each point that make the mark increasingly one of a kind and progressively hard to produce. Application regions of Online Signature Verification incorporate insurance of little close to home gadgets (for example PDA, PC), approval of PC clients for getting to delicate information or projects and confirmation of people [4].

II. LITERATURE REVIEW

Conventional bank checks, bank credits, MasterCard's and different authoritative records are a fundamental piece of the advanced economy. They are one of the essential mediums by which people and associations move cash and take care of tabs. Indeed, even today every one of these exchanges particularly monetary require our marks to be validated. The unavoidable reaction of marks is that they can be misused to fake a record's valid ness. Henceforth the requirement for inquire about in proficient robotized answers for signature acknowledgment and confirmation has expanded as of late to abstain from being defenceless against extortion [5]. signature check and acknowledgment utilizing another methodology that relies upon a neural system which empowers the client to perceive whether a mark is unique or a fake. The client brings into the PC the examined pictures, alters their quality by picture improvement and clamour decrease systems, to be trailed by include extraction and neural system preparing, lastly checks the credibility of the mark. A disconnected mark checks and acknowledgment framework dependent on a blend of highlights extricated, for example, worldwide highlights, cover highlights and lattice highlights. The framework is prepared utilizing a database of marks. For every individual, a centroid highlight vector is acquired from a lot of his/her veritable examples utilizing the highlights that were separated. The centroid mark is then utilized as a layout which is utilized to confirm an asserted mark. To get a good proportion of comparability between our format signature and the guaranteed signature, we utilize the Euclidean separation in the element space. The outcomes were promising and a triumph pace of 70 to 80% was accomplished utilizing a restricted edge [6].

The following methodology depicted Feature extraction is a significant procedure in disconnected mark check. Right now, execution of two element extraction procedures, the Modified Direction Feature (MDF) and the angle highlight are analysed based on comparative test settings. Moreover, the presentation of Support Vector Machines (SVMs) and the squared Mahalanobis separation classifier utilizing the Gradient Feature are additionally thought about and detailed. Without utilizing falsifications for preparing, test results showed that a normal mistake rate as low as 15.03% could be acquired utilizing the inclination highlight and SVMs.

This methodology depends on the limit of a mark and its projections are portrayed for upgrading the procedure of computerized signature confirmation. The main worldwide element is gotten from the absolute 'vitality' an essayist uses to make their mark. The subsequent component utilizes data from the vertical and level projections of a mark, concentrating on the extent of the separation between key strokes in the picture, and the stature/width of the mark. The blend of these highlights with the Modified Direction Feature (MDF) and the proportion include demonstrated promising outcomes for the disconnected mark confirmation issue. When being prepared utilizing 12 certified examples and 400 arbitrary phonies taken from openly accessible database, the Support Vector Machine (SVM) classifier acquired a normal blunder rate (AER) of 17.25%. The bogus acknowledgment rate (FAR) for arbitrary fabrications was additionally kept as low as 0.08% [7]. Alan McCabe et al, shows a technique for checking manually written marks by utilizing ANN engineering. Different static (e.g., stature, incline, and so forth.) and dynamic (e.g., speed, pen tip pressure, and so on.) Signature highlights are extricated and used to prepare the NN. A few Network topologies are tried and their exactness is analysed. The subsequent framework performs sensibly well with a general blunder pace of 3.3% being accounted for the best case [8].

III. PROBLEM DEFINITION

Most of the available offline handwritten signature verification methods do not cater for scale and rotation variation. The Scale Invariant Feature Transform (SIFT) is an image processing algorithm that takes an image and transforms into a collection of local feature vector. The SIFT algorithm has proved to be efficient in both recognition and verification problems but has not been used to solve HSV problems. After doing the extensive literature survey it has been found that none of the existing techniques have been efficient in terms of genuinely of the digital signatures. To determine whether signature is genuine or forgery a new approach is proposed in dealing with the online signature verification a combination of two methods GMM and LCSS using publicly available signature database i.e., MCYT-100. Firstly, the signature is normalized and the parameters of the GMM are estimated by the Maximum Likelihood method. The Maximum likelihood method estimation technique finds the parameters that maximize the joint likelihood of the data which are supposed to be independent and identically distributed. In the Gaussian mixture, it captures the underlying



statistical variability's of the point based features, being used for describing the online trace of the signatures. Then LCSS detection algorithm which measures the similarity of signature time series. A threshold value is set and a decision is made comparing the test signature values with the database signature values whether the signature is genuine or forgery. To evaluate LCSS performance, it is compared with the most widely used technique called DTW. In evaluating the performance of a signature verification system, there are two important factors: the FRR of genuine signatures and the FAR of forgery signatures. As these two errors are inversely related, the EER where FAR equals FRR is often reported.

IV.OBJECTIVES

- 1)To create signature acknowledgment and confirmation System by utilizing counterfeit neural system.
- 2)To confirm an entered signature with the assistance of an Normal mark, which is gotten from the arrangement of, recently gathered marks.
- 3)To precisely portray every client's mark, therefore offering great check and acknowledgment execution.
- 4)To diminish the time required for Signature confirmation and acknowledgment.
- 5)To keep up the Security in different money related space, for example, banking, Insurance and so forth.

V.PROPOSED METHODOLOGY

To perform check or recognizable proof of a signature, a few stages must be performed.

These means are

- 4.1 Image pre-preparing
- 4.2 Feature extraction
- 4.3 Neural system preparing

4.1 Image Pre-Processing

Picture pre-preparing speaks to a wide scope of methods that exist for the control and change of pictures. It is the initial phase in signature confirmation and acknowledgment. A fruitful usage of this progression produces improved outcomes and higher exactness rates.

4.2 Feature Extraction

Highlight extraction is the subsequent significant advance in signature acknowledgment and check. On the off chance that we are to look at 2 representations; there ought to be at any rate one estimation on which to base this examination. The principle capacity of this progression is to create highlights which can be utilized as examination estimations. Since the issue of mark check is an exceptionally touchy procedure, more than one component/estimation must be created so as to upgrade the precision of the outcome.

4.3 Neural Network Training

Neural systems - like people - rely upon learning so as to accomplish any undertaking. They learn through preparing on countless information, which empowers them to make an example with time, that they will utilize later. They are useful in recognizing designs that are confounded and difficult to infer by people or by basic methods. Much the same as the instance of mark acknowledgment, it is exceptionally difficult to tell whether a mark is unique or produced, particularly in the event that it is completed by a gifted falsifier. In this way a further developed strategy to recognize the distinctions is expected to accomplish a choice on its genuineness. Neural systems don't adhere to a lot of guidelines, given to them by the creator, however they learn as they go one case at a time case.



4.4 Signature Recognition & Verification Using ANN

Neural systems are profoundly solid when prepared utilizing a lot of information. They are utilized in applications where security is exceptionally esteemed. For signature acknowledgment and check a few stages must be performed. In our proposed work fundamentally we gather the examined pictures of mark of various people, essentially we gather the 10 filtered pictures of people's genuine marks and their manufactured marks. These pictures are put away in a database which we are going to use in preparing and testing of ANN, in our proposed work we need to utilize an interface with scanner for getting a picture and These pictures are put away in a database. Subsequent to pre-processing all marks pictures from the database, highlights extraction will be utilized to extricate different highlights of mark, for example, stroke, minute invariants, GLCM, shading predominant, histogram that can recognize marks of various people. These are utilized for preparing and testing of neural system.

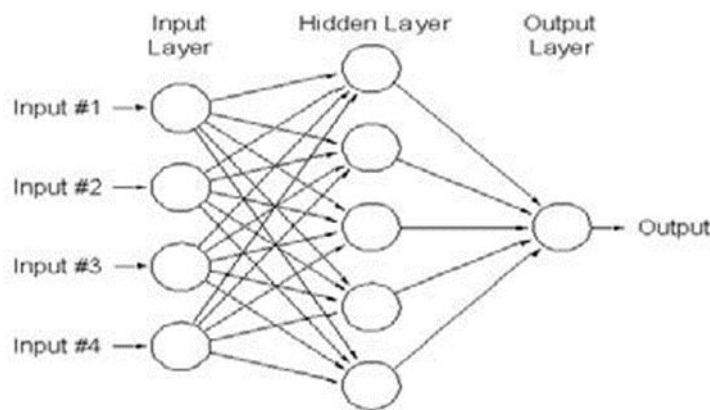


Figure 1: Neural Network Diagram

Here these are ANN numerical models which emulating natural neural systems where they comprise of a gathering of associated which speaking to the neurons of the cerebrum. It spoke to by a chart of hubs in different layers with weighted associations between hubs in various layers. [9] Where RBF arrange is an ANN that utilizes spiral premise works as enactment capacities where RBF organizes ordinarily have three layers that are input layer, concealed layer with a non-straight RBF initiation work and a yield layer with direct actuation capacities and the most famous structure is given underneath:

$$\tilde{y}(x) = \sum_{i=1}^m \underbrace{\omega_i}_{\text{weights}} \underbrace{h_i(x)}_{\text{hidden units}}$$

Where Φ is the activation function.

The proposed methodology or procedure for signature recognition and verification are as follows:

- a. Acquire the Signature images.
- b. Image preprocessing.
- c. Extract the various features.
- d. Use these features to train the system using ANN algorithm
- d. Test the Signature image.
- e. Take decision as originals or forgeries.

4.5 Proposed System Design

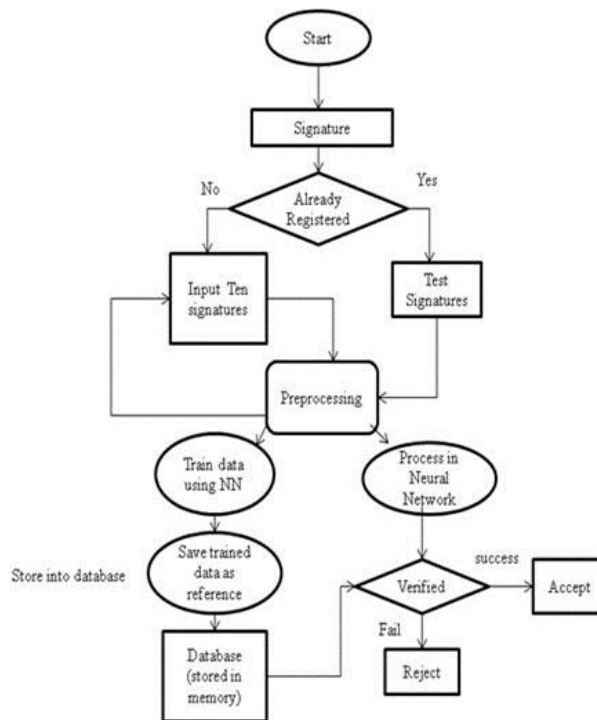


Figure 2: Flowchart of Proposed Work

VI. COMPARISON

Below table showing FAR (False Acceptance Ratio) percentage values for different thresholds for both combinations GMM-LCSS and GMM-DTW:

S.no.	Threshold	Using LCSS---FAR	Using DTW-FAR
1	0.1	0.95	1
2	0.2	0.95	1
3	0.3	0.95	1
4	0.4	0.95	0.92
5	0.5	0.96	0.84
6	0.6	0.68	0.68
7	0.7	0.4	0.36

Table 1: FAR Comparison using LCSS and DTW

Below table showing FRR (False Rejection Ratio) percentage values for different thresholds for both combinations GMM-LCSS and GMM-DTW:

S.no	Threshold	Using LCSS—FRR	Using DTW---FRR
1	0.1	0.04	0.16
2	0.2	0.04	0.16
3	0.3	0.04	0.2
4	0.4	0.04	0.3
5	0.5	0.08	0.28
6	0.6	0.2	0.6
7	0.7	0.4	0.75

Table 2: FRR Comparison using LCSS and DTW



VII. CONCLUSION

This proposed framework is centred around Bank Check Signature Verification System utilizing fake neural system. Marks are checked dependent on parameters extricated from the mark utilizing different picture preparing procedures. This proposed framework will gives utility of mark confirmation is appeared. it helps in distinguishing the specific individual and it gives more precision of checking marks for usage of over, this paper utilizes Neural Networks for acknowledgment and confirmation of marks of people.

REFERENCES

- [1] Ms. Vibha Pandey Ms. Sanjivani Shantaiya. "Signature Verification Using Morphological Features Based on Artificial Neural Network", 2012 pp. 288-292.
- [2] Arti Agrahari, Abhishek Verma, Arti dubey. Garima Singh "Signature Verification System Using MATLAB" 2nd International Conference on Role of Technology in Nation Building (ICRTNB-2013).
- [3] Vaishali M. Deshmukh, Sachin A. Murab "Signature Recognition & Verification Using ANN" International Journal of Innovative Technology and Exploring Engineering (IJITEE) ISSN: 2278-3075, Volume-1, Issue-6, November 2012.
- [4] Meenu Bhatia "Off-Line Hand Written Signature Verification using Neural Network" International Journal of Application or Innovation in Engineering & Management (IJAIEM) Volume 2, Issue 5, May 2013.
- [5] Pradeep Kumar, Shekhar Singh Ashwani Garg Nishant Prabhat "Hand Written Signature Recognition & Verification using Neural Network" International Journal of Advanced Research in Computer Science and Software Engineering Volume 3, Issue 3, March 2013.
- [6] Kritika Raghuvanshi Niketa Dubey, Riju Nema Rishabh Sharma "Signature Verification through MATLAB Using Image Processing" International Journal of Emerging Trends in Electronics and Computers (IJETECS) Volume 2, Issue 4, April 2013.
- [7] Dr. Umesh. Bhadade Mrs. Rupal Patil, Nilesh Y. Choudhary Prof. Bhupendra M Chaudhari "Signature Recognition & Verification System Using Back Propagation Neural Network" International Journal of IT, Engineering and Applied Sciences Research (IJIEASR) ISSN: 2319-4413 Volume 2, No. 1, January 2013.
- [8] Ankit Chadha, Neha Satam, and Vibha Wali "Biometric Signature Processing & Recognition Using Radial Basis Function Network" CiiT International Journal of Digital Image Processing, ISSN 0974 – 9675 (Print) & ISSN 0974 – 956X (Online) September 2013.
- [9] Harpreet Anand, Prof. D.L Bhombe, "ENHANCED SIGNATURE VERIFICATION AND RECOGNITION USING MATLAB," IJIRAE, vol. 1, no. 4, p. 7, 2014.



Impact Factor: 8.423



INTERNATIONAL JOURNAL OF INNOVATIVE RESEARCH

IN SCIENCE | ENGINEERING | TECHNOLOGY

 9940 572 462  6381 907 438  ijirset@gmail.com



www.ijirset.com

Scan to save the contact details