



e-ISSN: 2319-8753 | p-ISSN: 2347-6710

# IJRSET

International Journal of Innovative Research in  
**SCIENCE | ENGINEERING | TECHNOLOGY**

# INTERNATIONAL JOURNAL OF INNOVATIVE RESEARCH

IN SCIENCE | ENGINEERING | TECHNOLOGY

Volume 12, Issue 4, April 2023

**ISSN** INTERNATIONAL  
STANDARD  
SERIAL  
NUMBER  
INDIA

Impact Factor: 8.423

 9940 572 462

 6381 907 438

 [ijirset@gmail.com](mailto:ijirset@gmail.com)

 [www.ijirset.com](http://www.ijirset.com)

# Design and Analysis of Prestressed Concrete Pavement Panel

Mr. Sanjay V. Jagtap<sup>1</sup>, Dr. Shriganesh S. Kadam<sup>2</sup>

P.G. Student, Department of Civil Engineering, SKN Sinhgad College of Engineering, Korti-Pandharpur, Punyashlok  
Ahilyadevi Holkar Solapur University, Maharashtra, India<sup>1</sup>

Head, Department of Civil Engineering, SKN Sinhgad College of Engineering, Korti-Pandharpur, Punyashlok  
Ahilyadevi Holkar Solapur University, Maharashtra, India<sup>2</sup>

**ABSTRACT:** This invention incorporates the use of precast solid boards for the fixation of solid asphalts. The examination's objective was to assess the state of innovation and identify execution issues. The repair of solid asphalts employing precast solid boards may be a tempting alternative to cast set up fixes, as it may save construction time and provide solid asphalts. The development costs of repairs with precast boards are often more than the development costs of repairs utilising cast-in-place clearing with high-quality cement. Yet, repairs with precast boards may be more efficient and of greater quality. The greatest possibility for using precast repairs exists when identical precast boards may be employed at several fix locations. Asphalt repairs with precast boards and done under time constraints need strong coordination between the office owner, the contract executive, and the temporary employee. All factors impacting the office's traffic opening must be examined and assisted uniformly. Modern techniques for positioning precast panels include cementations materials or polyurethane foam under the part to provide complete contact/support with the concealed substrate. Fixtures employing precast bords depend on the material and construction quality. As always, the risk associated with the use of precast boards depends on the quality of the materials and construction. As always, there is risk associated with the use of novel mechanical procedures that are not routinely used and do not have a lengthy history.

**KEYWORDS:** Precast Airport, ANSYS, Airport runway, Fast track construction.

## I. INTRODUCTION

In uses such as skyscrapers, roadways, metro rail, overpasses, and bridge, prefabricated concrete construction techniques are now viable options. The key advantages of precast building are its speed, durability, safety, and all-weather building. In a precast factory, components may be cast and cured in a controlled setting, allowing for more control over the quality of the concrete mix, vibration protocols, and correct curing. Precast items lessen or remove the curl, durability, and plane issues typical of traditional concrete pavement. Components may be precast in a precasting yard, stocked, and delivered to the construction area well in ahead of when they will be required. The building may then be constructed utilising prefabricated parts. Curing time, which is crucial in terms of operating duration and long-term efficiency, especially for concrete made from Portland cement sidewalks, will no longer be a consideration. Using prefabricated components decreases the operational stage and improves drying time.[1]

### Problem Statement and Project Objectives

This study's purpose is to evaluate the use of precast panels of concrete in the building and maintenance of prefabricated concrete air field pavement. Particular and simultaneous goals of their ports also include the following:

- To design a realistic technique for accelerating the building of a Greenfield Airport and the repair of cement-based floors by using precast technologies.
- To Allow of the execution of current traditional concrete improvements utilising prefabricated slabs.
- Determine the primary obstacles to the effective application of input is usually.
- primary Sources of the principal results.

Thus, the objective of this project was to propose a design for a precast pavement that satisfies the criteria for accelerated development and is practical in regard to design, manufacturing, economics, and longevity. The suggested idea must have a service life of at least 30 years to be equivalent to the traditional guest stars sidewalks that are currently being built.

To achieve these aims, the following duties were carried out as a component of this endeavor:

1. Assess the present day advances in technologies via a comprehensive literature analysis and interactions with prefabricated and cement pavement industry specialists.
2. Assess possible paving kinds.
3. Suggest viable ideas for a pre - cast concrete sidewalk.
4. Do a feasibility report for each of the highlighted ideas.
5. Provide suggestions for further research and execution.
6. Formulate suggestions for future performance analysis of test pavers.

## II. LITERATURE REVIEW

### **Ameen Syed et. Al., “Analysis of Prestressed Precast Concrete Pavement” (2017)**

Prolonged vehicle halt is one of the largest obstacles to the construction and maintenance of flexible asphalt. The time required to create a conventional concrete pavement comprises the preparation of the base, the pouring of the concrete, and its curing. Using pre - stressing pre - cast concrete sidewalk may considerably shorten this period. Cast at a prefabricated yard, dominant positions concrete panel are transported to the construction site and installed on a constructed foundation. Pretensioning is required to directly reduce panel width, which streamlines the shipment and installation process. When moment chores are performed in the yard, the amount of time that transportation is stalled is greatly reduced. Cement of the greatest quality may be preserved by blending, mixing, and drying it in an air environment. Another important advantage of the these screens is its ease of maintenance. [2]

### **Shahrukh Z. et. Al., “Design Precast Concrete pavement panel by utilizing mechanical strong waste” (2020)**

This study explores Pre - cast concrete Paving (PCP) with the aid of several credible sources. They are able to modify road repairs and maintenance in elevated locations. Even if they lessen road congestion and increase security during construction, barriers may give improved pavement. After the inquiry, the audit finds that PCP uses common components. Stream sand damages ecological equilibrium in the same manner as it impacts the level of ground water. Solidworks simulation waste is plentiful, but it also contributes to the effects of climate change and global warming. Notwithstanding the negative sides of these waste products, we are able to use them for development priorities since their attributes are identical to those of ordinary materials. Solidworks simulation waste could help delay the extraction of traditional resources. [3]

### **Hari NugrahaNurjaman et. Al., “The experimental study of precast concrete panel connection system for rigid pavement in Indonesia” (2020)**

From 2014, the Indonesian government started a nationwide effort to speed infrastructure building. Unfortunately, roads built with today's technology (flexible or stiff pavement) sometimes do not reach their planned service life. With stiff flexible pavements using precast concrete slabs, early connecting failure is the key concern, resulting in a shorter sidewalk service life. Hence, the current asphalt techniques often employed in Indonesian highway construction are regarded unable to maintain the quick national highways timetable. This condition necessitated the development of a revolutionary pavement system that combines the techniques of continuously concrete and precast pre - stressing cement. This study's objective is to investigate the connection technique used to unite pavement tiles. The recommended joining method used a tool known as a dowel actuator. The connection system was designed to endure axial tension, shearing, and bending stresses stresses [4]

### **Ameen Syed et. Al., “Development and Early-Age Performance of an Innovative Prestressed Precast Concrete Pavement” (2019)**

Usage of pre - cast concrete paving (PCP) for speedy road construction has grown over the past ten years. Precast paving boards are produced at a prefabricated yard, brought to the construction area, placed on a constructed sub - base, and connected with dowels. This article details a recently reported instance of such a practise in India. The debate encompassed the design, assessment, construction, construction, and testing of a 24-meter stretch of road. To calculate the committee's stress, an experimental equation was developed. In particular, it has a revolutionary loading system (LTM) that employs a laterally glue bar arrangement as opposed to the more common transverse

wood bar arrangement. This LTM is easier to implement, helps keep up an excellent standard of ride experience, accelerates building, and it doesn't sacrifice loading effectiveness.[2]

**Mohammed F. Abbas et. Al., “Life Cycle Cost Analysis for use of precast prestressed concrete slabs in repair of concrete pavement” (2018)**

Prefabrication tensioned cement has historically been used for a variety of infrastructural constructions and operations in developed countries. As it offers multiple important benefits over conventional cast-in-place cement, its appeal has increased substantially in the transport industry over the past few years. These advantages include a reduced ecological footprint, less upkeep and restoration operations, savings in time on new sites and repair time, and, ultimately, efficiency gains on the finished project. Precast or before concrete, on the other hand, has a variety of drawbacks, along with a high building costs and an unknown serviceability. This characteristic of precast tensioned concrete slabs employed in the transport industry, particularly in road construction, requires more analysis. Thus, the final goal of this work is to build a model and evaluate actual life cycle expenses of precast which was before slabs of concrete (PPCS) used in road construction. This research examined two types of pavement structures, PPCS versus Jointed Simple Cement (JPC) stars, utilizing Life Cycle Cost Analytic methods to construct just one road in Californian, USA (LCCA). Using the Net Realizable Value (NPV) method, all future costs were converted to present-day dollars[3]

**III.PROPOSED CONCEPT**

The idea for employing prefabricated concrete panels for airport building and upkeep has grown from a number of essential aspects presented in the feasibility analysis. The suggested idea for a pre - cast concrete surface emphasises the usage of precast units with total depth. It is claimed that a proper scale riding surface may be achieved by realigning panels properly and doing periodic diamonds polishing or bumping removal. The suggested design comprises the panes seen in the picture above.

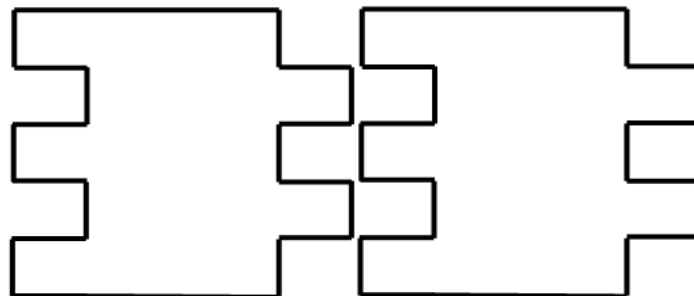


Fig.1 Proposed concept of precast slab

In this book, the specifics of this concept would be addressed. The patient - provider communication a summary of the panel to be utilised, joint specifications, panel assembling procedures, and preparations of a foundation.

**A. Precast Concrete Panels**

Each pre - cast concrete tiles must be properly aligned in order to provide a clean ride quality. Using continuously keyless borders that are cast and locked with neighbouring panels seems to be the most efficient approach for maintaining accurate alignments. A male lock will be shot as one of the panel's edges and a female key border would be put into the other side. This key will connect the panes to ensure a precise horizontal orientation and a snug fit across neighbouring panels. To ease the cast and assembling operations, all panel will have the same length. The length of the panels will depends on the kind of panels and the restrictions of the production and operational needs. Due to shipping restrictions, a panels height of two metres would likely be the minimum size.



Fig.2 Proposed Panel Design

#### IV.METHODOLOGY

Previous to the initial session of the advisory group, concepts and basic concepts were generated according to the researchers' expertise and a full book assessment. Together with feedback provided by the initial expert panel, these concepts led to the creation of the suggested concept. Further to pick a paving material and potential cross-sectional solutions for the suggested idea, a method review was conducted. Taking into account aesthetic concerns, the viability of the suggested idea was then analysed in terms of form, manufacturing, finances, and longevity.

- Prefabrication Technologies Research
- Gathering of Data.
- Determine potential ideas for A Prefabricated Concrete Driveway.
- ANSYS Study.
- Findings and Discussions.
- Concluding Statement.

#### Material Properties

##### A. Portland Cement Concrete

PCC utilised in the manufacturing of precast units must normally match the very same material specifications as the shareholder' PCC concrete projections. For instance, the necessary flexural modulus for army airport sidewalks at 28 days is 4.5MPa. In regions subject to cementation, the standards must additionally provide an air pressure contents inside the concrete structure and an air mass void separation ratio.

##### B. Steel Reinforcement

To resist expected forces throughout transit and assembly, prefabricated boards should be strengthened with steel bars. The rebars must be covered with cement, and the high cement cover must be 80 millimetres. It is possible to utilise pressurising reinforcing to expand 'll update or decrease pane width.

### V. VALIDATION

#### A. Rectangular Slot Shape

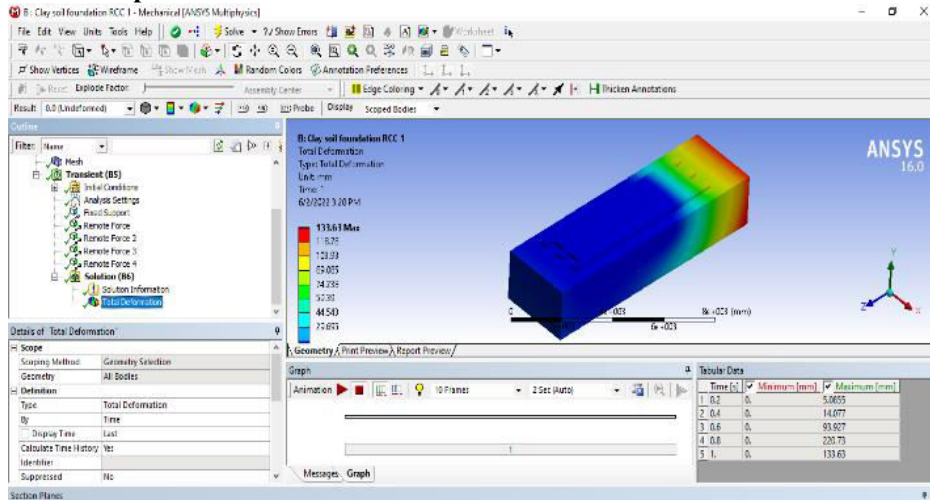


Fig.3 Total Deformation

#### B. Prestressed Loading

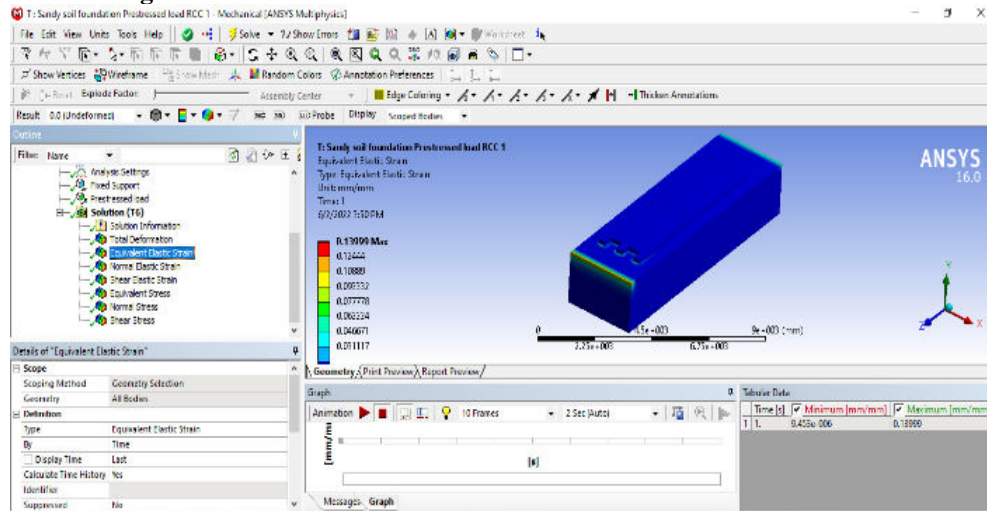


Fig.4Equivalent Elastic Strain

C. Modal Analysis

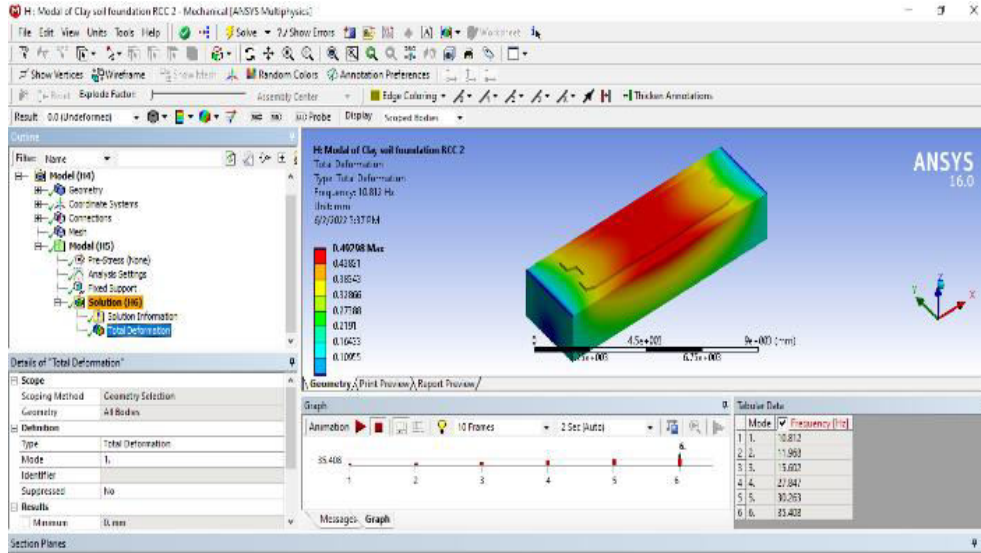


Fig.5 Total Deformation

D. Hexagonal Slot Shape

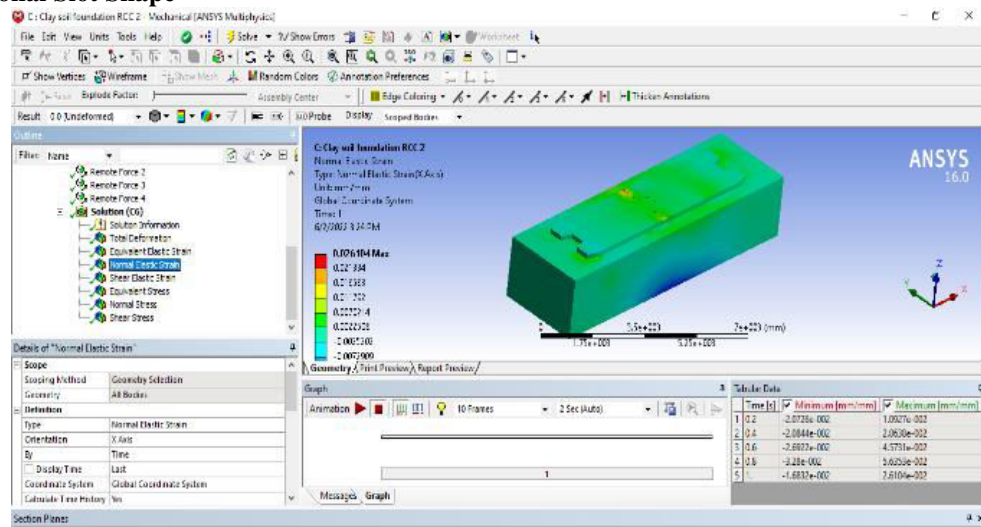


Fig.6 Normal Elastic Strain

**E. Prestressed Loading**

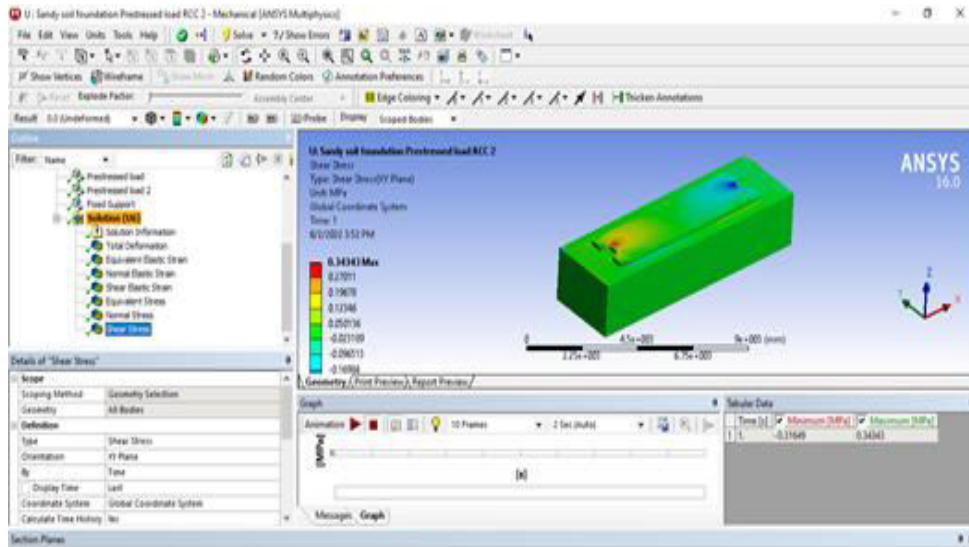


Fig.7 Shear Stress

**VI. RESULTS**

**A. IRC Loading**

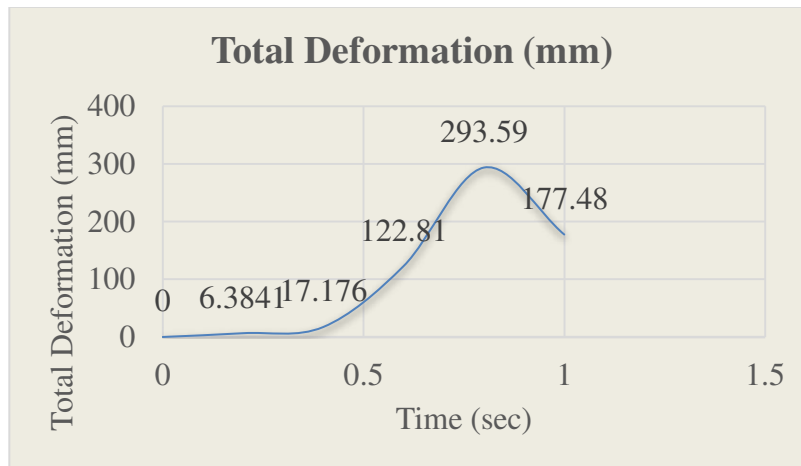


Fig.8 Total Deformation



**B. Clay Soil Loading Comparison Graph**

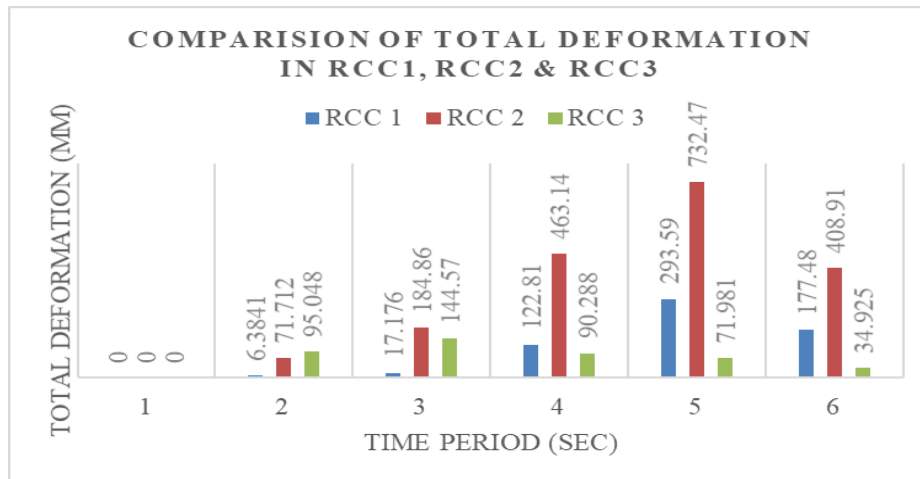


Fig.9 Comparison of Total Deformation in RCC1, RCC2 & RCC3

**C. Comparison of Equivalent Elastic Strain (Mm) in RCC1, RCC2 &RCC3**

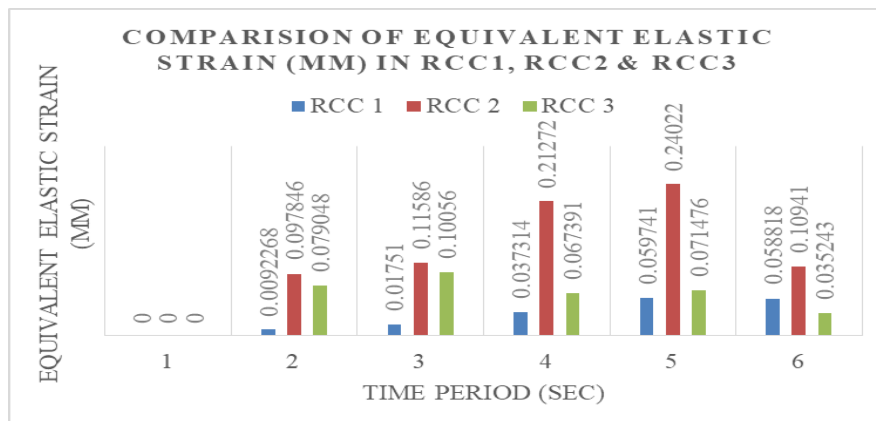


Fig.10 Comparison of Equivalent Elastic Strain (Mm) in RCC1, RCC2 & RCC3

**D. Modal Analysis**

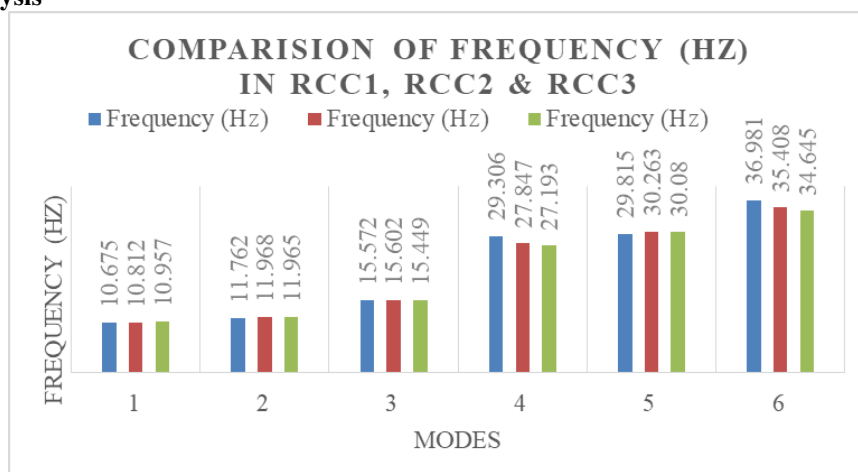


Fig.11 Comparison of Frequency (Hz) in RCC1, RCC2 & RCC3



Comparison Between Results from Manual & ANSYS Solutions for Validation

TOTAL DEFORMATION (mm)	
ANALYTICAL	ANSYS
1.6	1.7333

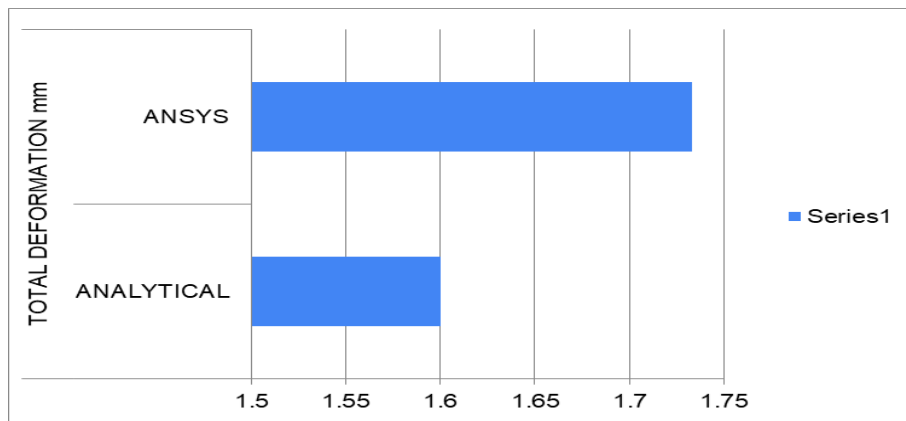


Fig.12 Total Deformation

Shear stress (N/mm <sup>2</sup> )	
ANALYTICAL	ANSYS
24.2	26.62

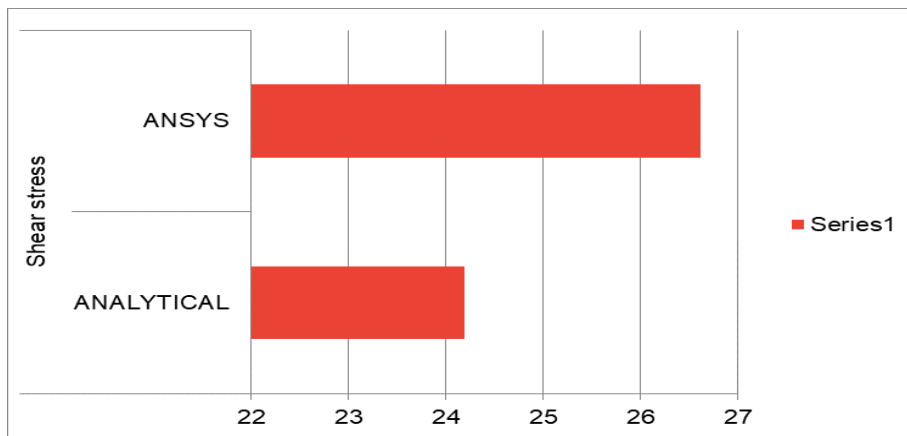


Fig.13 Shear Stress

Normal Stress (N/mm <sup>2</sup> )	
ANALYTICAL	ANSYS
73.89	81.279

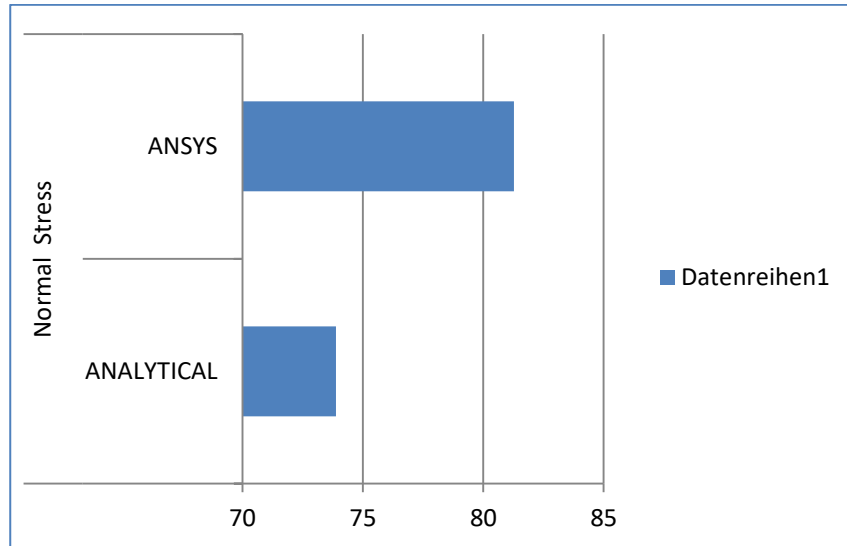


Fig.14 Normal Stress

Equivalent Stress (N/mm <sup>2</sup> )	
ANALYTICAL	ANSYS
146	160.6

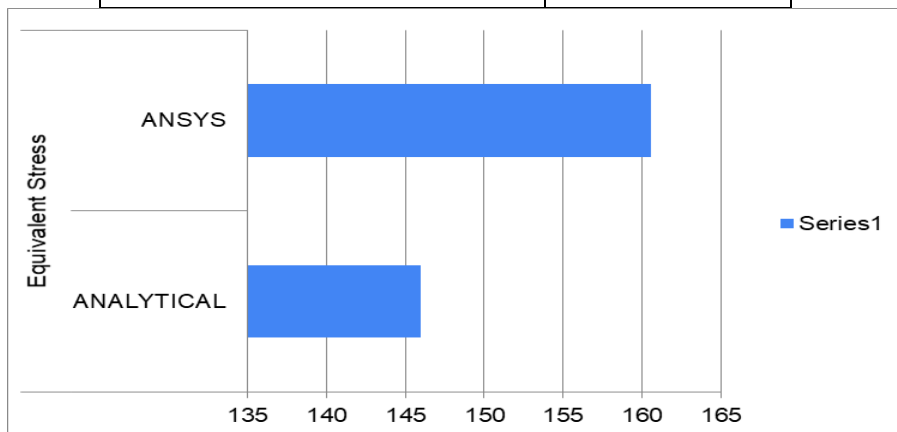


Fig.15 Equivalent Stress

### VI.CONCLUSION

The substantial impediment to the building and replacement of inflexible asphalt posed by the lengthy interruption of car traffic. The time needed to complete a concrete block sidewalk involves the installation of the foundation, filling, and drying of the cement. The implementation of limited pre - cast concrete flooring may significantly shorten this duration. Each panel is which was before and cured in the storage yard for PPCP. Due to the fact that all these paneling are cast in a contained way, a better concrete material may be employed [1]

- i. The findings of the load transmission here between panel through the projects are satisfactory.
- ii. This cloud computing benefits include the enhancement of concrete condition and the decrease of build time.
- iii. The use of PPCP makes the maintenance and building of asphalt concrete in high-traffic regions simple.
- iv. Which was before allows for a substantial reduction in the height of an asphalt.

- v. It is determined that the restraints addressed again for panels are enough to withstand the intense wind speeds inherent in the Indian environment.[5]

#### REFERENCES

- [1] Alwehaidah, N. M., & Russell, B. W. (2018). Finite Element Analysis and Load Tests of Full-Scale, Variable-Thickness Precast, Prestressed Concrete Pavement on Granular Base. *PCI Journal*, 63(4), 54–61. <https://doi.org/10.15554/pci63.4-01>
- [2] Indexed, S., Naeem, Z. T., Abbas, M. F., Aladhadh, A. R., & Muthanna, A.-. (2018). Life Cycle Cost Analysis for Use of Precast Prestressed Concrete Slabs. 9(11), 1479–1490.
- [3] Kim, K., Tia, M., & Greene, J. (2016). Evaluation of structural behavior of precast prestressed concrete pavement with finite element analysis. *Transportation Research Record*, 2590, 84–93. <https://doi.org/10.3141/2590-10>
- [4] Kureshi, S. Z. (2020). Design Precast Concrete Pavement Panel By Utilizing Mechanical Strong. 7(1), 43–46.
- [5] Nurjaman, H. N., Faizal, L., Suaryana, N., Dharmawan, Y., & Suwito. (2020). The experimental study of precast concrete panel connection system for rigid pavement in Indonesia. *AIP Conference Proceedings*, 2227(May). <https://doi.org/10.1063/5.0004195>
- [6] Nurjaman, H., Faizal, L., Suaryana, N., Hariandja, B., Gambiro, Purnomo, & Wicaksono, S. (2017). Design, development, and application of precast and prestressed concrete system for rigid pavement in Indonesia. *AIP Conference Proceedings*, 1903(November 2017). <https://doi.org/10.1063/1.5011510>
- [7] Qu, B., Weng, X. zhong, Zhang, J., Mei, J. jie, Guo, T. xiong, Li, R. fei, & An, S. hua. (2017). Analysis on the deflection and load transfer capacity of a prefabricated airport prestressed concrete pavement. *Construction and Building Materials*, 157, 449–458. <https://doi.org/10.1016/j.conbuildmat.2017.09.124>
- [8] Syed, A., & Sonparote, R. S. (2017). Analysis of Prestressed Precast Concrete Pavement. *Materials Today: Proceedings*, 4(9), 9713–9717. <https://doi.org/10.1016/j.matpr.2017.06.253>
- [9] Syed, A., & Sonparote, R. S. (2020). Development and Early-Age Performance of an Innovative Prestressed Precast Concrete Pavement. *Journal of Construction Engineering and Management*, 146(2), 05019018. [https://doi.org/10.1061/\(asce\)co.1943-7862.0001741](https://doi.org/10.1061/(asce)co.1943-7862.0001741)
- [10] Tomek, R. (2017). Advantages of Precast Concrete in Highway Infrastructure Construction. *Procedia Engineering*, 196(June), 176–180. <https://doi.org/10.1016/j.proeng.2017.07.188>
- [11] Yu, L., Zhang, X., & Yan, X. (2017). Finite Element Analysis of Oblique Prestressed Concrete Pavement. *DEStech Transactions on Engineering and Technology Research*, 3(ictim), 982–987. <https://doi.org/10.12783/dtetr/ictim2016/5592>
- [12] Nurjaman, H. N., Faizal, L., Suaryana, N., Dharmawan, Y., Wantoro, A., Purnomo, & Suwito. (2019). Development Precast and Prestressed Concrete Rigid Pavement System in Indonesia. *IOP Conference Series: Materials Science and Engineering*, 650(1), 0–10. <https://doi.org/10.1088/1757-899X/650/1/012034>
- [13] Liu, J., Hu, H., Li, J., Chen, Y. F., & Zhang, L. (2020). Flexural behavior of prestressed concrete composite slab with precast inverted T-shaped ribbed panels. *Engineering Structures*, 215(December 2019), 110687. <https://doi.org/10.1016/j.engstruct.2020.110687>
- [14] Kim, K., Chun, S., Park, B., & Han, S. (2021). Precast prestressed concrete pavement (PPCP): Effect of thermal gradient on curling deflection and stress. *Construction and Building Materials*, 274, 121966. <https://doi.org/10.1016/j.conbuildmat.2020.121966>
- [15] Mishra, T., French, P., & Sakkal, Z. (2013). Engineering a better road: Use of two-way prestressed, precast concrete pavement for rapid rehabilitations. *PCI Journal*, 58(1), 129–141. <https://doi.org/10.15554/pci63.4-01012013.129.141>



**INNO SPACE**  
SJIF Scientific Journal Impact Factor  
**Impact Factor: 8.423**



**ISSN** INTERNATIONAL  
STANDARD  
SERIAL  
NUMBER  
INDIA



# INTERNATIONAL JOURNAL OF INNOVATIVE RESEARCH

IN SCIENCE | ENGINEERING | TECHNOLOGY

**9940 572 462** **6381 907 438** **ijirset@gmail.com**



[www.ijirset.com](http://www.ijirset.com)

Scan to save the contact details