



e-ISSN: 2319-8753 | p-ISSN: 2347-6710

# IJIRSET

International Journal of Innovative Research in  
**SCIENCE | ENGINEERING | TECHNOLOGY**

# INTERNATIONAL JOURNAL OF INNOVATIVE RESEARCH

IN SCIENCE | ENGINEERING | TECHNOLOGY

Volume 12, Issue 2, February 2023

**ISSN** INTERNATIONAL  
STANDARD  
SERIAL  
NUMBER  
INDIA

Impact Factor: 8.118

 9940 572 462

 6381 907 438

 [ijirset@gmail.com](mailto:ijirset@gmail.com)

 [www.ijirset.com](http://www.ijirset.com)

# A Framework Design On Personality Classification with Data Mining Techniques

Pravin V. Thakare<sup>1</sup>, Vaishnavi S. Sultane<sup>2</sup>, Nikita R. Damodar<sup>3</sup>, Prajakta V. Kawade<sup>4</sup>,  
Namrata A. Jumle<sup>5</sup>, Snehal V. Unhale<sup>6</sup>

Assistant Professor, Department of Computer Science & Engineering, Mauli Group of Institution's,  
College of Engineering and Technology, Shegaon, India<sup>1</sup>

U.G. Student, Department of Computer Science & Engineering, Mauli Group of Institution's, College of  
Engineering and Technology, Shegaon, India<sup>2 3 4 5 6</sup>

**ABSTRACT:** An individual is seen as a character and arranged by different boundaries, which assists with foreseeing an individual's character. Character grouping alludes to the mental characterization of various character types. This undertaking is about the domain of characterizing human attributes. Utilizing an information mining approach, it tends to be helpful to group individuals utilizing character arrangement. In this article, we intend to robotize the expectation of client character through character testing. The framework utilizes the investigation of the grouping calculation performed utilizing the rich informational collection in the informational collection and contrasts it and the client's feedback. This framework is predominantly about order calculations.

**KEYWORDS:** Personality classification, Data mining.

## I. INTRODUCTION

Character is characterized as the perspective with the arrangement of discernment, feeling and standards of conduct that create from herbal and outside factors. For the most part, there could be no legitimate endorsement for meaning of character, fundamentally they center on incitement and applied communications. Indeed, even character can be characterized as qualities that foresee an individual's ways of behaving. Character ID was the old way to deal with recognize the client's character however presently with the assistance of information mining strategies exactness of this forecast has further developed a way part than old techniques.[1] Data mining is the strategy of observing example in gigantic informational collections including techniques at the communication of measurements, data set frameworks and AI. Its general objective is to deliver data from datasets and move data. Mechanized character comprises of contrasting a client's character with standard character tests. Character expectations rely fundamentally upon an individual's character. A few tests are led through a progression of inquiries, and the character is anticipated in light of the response picked by the client. The grouping calculation utilized is N closest neighbors. Handling a lot of information is basic, and this can be achieved utilizing order calculations. [2] The fundamental motivation behind this article is to chart the development of character forecasts in view of replies to related questions. The arrangement of this article is to foresee every client's character and reasonable vocation choices.

## II. LITERATURE SURVEY

“Using an Affective Computing Taxonomy Management System to Support Data Management in Personality Traits” [1] states that Affective Computing is a rather new and multidisciplinary research field that seeks sophisticated automation in emotion detection for later analysis. However, the automated emotion detection and analysis require as well comprehensive data management support, e.g. to keep control of data produced, and to enable its efficient reuse through classification with established terminology. This paper contributes to data management aspects in Affective Computing and to automation support in emotion classification on the basis of a personal traits analysis. Hence, it describe the implementation of a taxonomy management system, derived from requirements of a case study that investigates the relationship between personality and emotions in Affective Computing. The study makes use of machine learning software developed by Sense Care, an EU- funded R&D project that applies Affective Computing to enhance and advance future healthcare processes and Systems “Agile Person Identification through Personality Test

and kNN Classification Technique” [2] states that Agile methodology is a famous software development methodology. The methodology stresses on adaptation and collaboration between people. Here, software project managers should agree to an idea of putting the right people in the right jobs. This research puts forward an idea of applying Big Five Personality Traits to predict how people suitable for the Agile methodology. A predicting method is driven by using kNearest Neighbour (kNN) classification technique. Results of a pilot study are presented and shown that the selected classification technique can be used for the prediction.

“Happiness Recognition from Mobile Phone Data” states that first evidence that daily happiness of individuals can be automatically recognized using an extensive set of indicators obtained from the mobile phone usage data (call log, sms and Bluetooth proximity data) and “background noise” indicators coming from the weather factor and personality traits. Final machine learning model, based on the Random Forest classifier, obtains an accuracy score of 80.81% for a 3-class daily happiness recognition problem. Moreover, it identify and discuss the indicators, which have strong predictive power in the source and the feature spaces, discuss different approaches, machine learning models and provide an insight for future research. “Machine Prediction of Personality from Facebook Profiles”[3] states that An increasing number of Americans use social networking sites such as Facebook, but few fully appreciate the amount of information they share with the world as a result. Although studies exist on the sharing of specific types of information (photos, posts, etc.), one area that has been less explored is how Facebook profiles can share personality information in a broad, machine-readable fashion. In this study, it apply data mining and machine learning techniques to predict users’ personality traits (specifically, the traits of the Big Five personality model) using only demographic and text-based attributes extracted from their profiles. Then use these predictions to rank individuals in terms of the five traits, predicting which users will appear in the top or bottom 5% or 10% of these traits. Results show that when using certain models, can find the top 10% most Open individuals with nearly 75% accuracy, and across all traits and directions, we can predict the top 10% with at least 34.5% accuracy (exceeding 21.8%, which is the best accuracy when using just the best-performing profile attribute). These results have privacy implications in terms of allowing advertisers and other groups to focus on a specific subset of individuals based on their personality traits.

### III. ARCHITECTURE OF PROPOSED SYSTEM

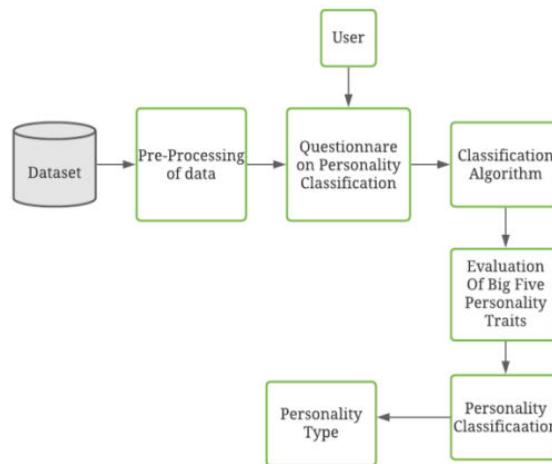


Fig.1 System Design for Personality Prediction System

The following sections describe each of these steps in more detail.

The accompanying segments depict every one of these means in more detail.

- Store Data connected with character characteristics in information base
- The character attributes are put away in information base. Afterward, when client enters his character attributes his character is analyzed in huge previous information bases and framework will recognize the character of the client. Gather related character qualities for every member;
- Every client will enter his character qualities than framework will distinguish the character of the client, in view of the past information put away in data set.
- Remove applicable elements from the texts

- Framework will separate pertinent highlights from the text entered by the client. Framework will contrast this text and information put away in data set. After examination, framework will indicate the character of the client.
- Show highlights pertinent to his character attributes
- Framework will analyze the character of the client in light of the character qualities referenced by the client. Furthermore, will furnish client with different elements which is pertinent to his character characteristics.
- Character Traits Comparison: The connection among character and client conduct is tried. The speculation is that good faith, suitability and neuroticism foresee exceptional difference mentalities.

#### IV. DATASETS

Enlightening file essentially involves single quantifiable data organization, in which each segment tends to a specific variable and the line tends to the possible blends of manages the requests. In this endeavor, the dataset contains values or responses answered by the client for the given plan of requests, client character, best calling decision. The responses are differentiated and the inside and out existing readiness set. Client character like Extraversion(E) or Introversion(I), Sensing(S) or Intuitive(I), Feeling(F) or Thinking(T), Judging(J) or Perceiving(P) are taken. With the help of these characters everything that could be been expected, for instance accepting the individual has a blend of ESTJ can be a connoisseur master.

#### V. RESULTANALYSIS OFCBIR

Personality analysis and prediction has increased very much in the recent times. Extracting the personality of the user using the current system is very much helpful in various fields, for instance, recruitment process, medical counseling, and likewise. Personality detection from survey means to extract the behavior characteristics of the users taking the survey. This paper focuses on providing a state-of-art review of an emerging field i.e. personality detection from survey. This paper also discusses the state-of-art methods for personality detection and prediction.

#### VI. CONCLUSION

This is our proposed concept that focuses on Content Based Image Retrieval by using convolutional neural network. The Problem here is to extract the image features that effectively represent the image contents in a database. Such an extraction requires a detailed evaluation of retrieval performance of image features CBIR is used to search a specific image from a large database. CBIR performs interactive searching of images from the dataset. Up to now CBIR is not themost accurate technique for finding desired outcomes. But by using Convolutional neural network it works good. One promising technique is Machine Learning that attempts to address this challenge in the long-term. In the recent years there have been important advancements in machine learning techniques. Finding more features and extracting that from query

Image is the very complex termin CBIR but as because of CNN it becomes little bite a syand so we have thought of using CNN for more accurate result. Convolutional neural network is an important breakthrough technique, which includes a family of machine learning algorithms this technique is still in research state for finding more better and accurate output. At present this technique is implemented by Google.

#### REFERENCES

- [1] Manasi Ombhase, Student, PCE, Prajakta Gogate, Student, PCE, Tejas Patil, Student, PCE, Karan Nair, Student, PCE and Prof. Gayatri Hegde, Faculty, PCE, "Automated Personality Classification Using Data Mining Techniques"
- [2] Sayali D. Jadhav<sup>1</sup>, H. P. Channe<sup>2</sup>"Comparative Study of K-NN, Naive Bayes and Decision Tree Classification Techniques", Department of Computer Engineering, Pune Institute of Computer Technology, Savitribai Phule Pune University, Pune, India
- [3] Anisha Yata<sup>1</sup>, Prasanna Kante<sup>2</sup>, T Sravani<sup>3</sup>, B Malathi<sup>4</sup>," Personality Recognition using Multi-Label Classification"2018.
- [4] Veronica Ong, Anneke D. S. Rahmanto, Williem and Derwin Suhartono," Exploring Personality Prediction from Text on Social Media": A Literature Review 2017.



- [5] Tommy Tandra, Hendro, Derwin Suhartono\*, Rini Wongso, and Yen Lina Prasetio “Personality Prediction System from Facebook Users” Computer Science Department, School of Computer Science, Bina Nusantara University, Jl. K. H. Syahdan No. 9 Kemanggisian, Jakarta 11480, Indonesia
- [6] Avnish Kumar<sup>1</sup>, Akshat Gawankar<sup>2</sup>, Kunal Borge<sup>3</sup> & Mr Nilesh M Patil<sup>4</sup> .1 2 3B.E IT Student, “Student Profile & Personality Prediction using Data Mining Algorithms” Information Technology, Rajiv Gandhi Institute of Technology, Mumbai, India 4 Assistant Professor, Information Technology, Rajiv Gandhi Institute of Technology, Maharashtra, India



**INNO SPACE**  
SJIF Scientific Journal Impact Factor  
**Impact Factor: 8.118**



**ISSN** INTERNATIONAL  
STANDARD  
SERIAL  
NUMBER  
INDIA



# INTERNATIONAL JOURNAL OF INNOVATIVE RESEARCH

IN SCIENCE | ENGINEERING | TECHNOLOGY

 **9940 572 462**  **6381 907 438**  **ijirset@gmail.com**



[www.ijirset.com](http://www.ijirset.com)

Scan to save the contact details