



e-ISSN: 2319-8753 | p-ISSN: 2347-6710

IJIRSET

International Journal of Innovative Research in
SCIENCE | ENGINEERING | TECHNOLOGY



INTERNATIONAL JOURNAL OF INNOVATIVE RESEARCH

IN SCIENCE | ENGINEERING | TECHNOLOGY

Volume 12, Issue 1, January 2023

ISSN INTERNATIONAL
STANDARD
SERIAL
NUMBER
INDIA

Impact Factor: 8.118

The Effect of Square Model Submerged Breakwater on Wave Reflection

Erni Rante Bungin

Assistant Professor, Department of Civil Engineering, Universitas Kristen Indonesia Paulus, Makassar, Indonesia

ABSTRACT: Wave reflection is the waves that occur when incoming waves hit a wall or barrier. The issue of wave reflection is very important in the design of coastal and harbor structures in particular. The water in the port pool should be calm so that the ship can dock. To get peace in the port pool, a building must be made that can absorb energy or destroy wave energy. A breakwater is a building that functions to absorb or destroy wave energy. One form of the breakwater is the submerged breakwater. The submerged breakwater is a breakwater in which the damped wave is allowed to pass over the construction. This research aims to understand the wave reflection with an asymmetrical arranged square submerged structure. This research was conducted with a submerged square-shaped breakwater model. The model is arranged asymmetrically to see the effect of changing wave reflection on the square-shaped breakwater. The results of this study indicate that the reflection coefficient affects on the submerged breakwater model which is arranged asymmetrically. The closer the model is to the water surface, the greater the reflection coefficient value. Likewise, if the model is further away from the water surface, the reflection coefficient value will decrease. This is because the incoming waves are transmitted more than reflected by the height of the structure (model) used.

KEYWORDS: Effect, square model, breakwater, wave.

I. INTRODUCTION

Coastal processes basically take place naturally in dynamic stable conditions, although erosion/abrasion occurs at certain periods which causes the coastline to regress, but in other periods accretion will occur which causes the shoreline to advance back to its original place after a period of a season or vice versa. . This condition shows the coastline is in a dynamically stable condition and no problems arise. The problem will be serious if the use of the coastal area does not pay attention to the principles of handling environmentally sound. One of the problems on the coast is erosion/abrasion caused by wave energy that does not break or breaks on the beach which then causes turbulence, scour, and strong friction on the basic material of the beach or buildings on the coast resulting in the coastline retreating, the coastal land is eroded and even buildings experience collapse. To overcome this problem, one way that can be done is to reduce the wave energy that reaches the shore by using a breakwater. There are 3 types of breakwaters, namely emerging, low crest, and submerged.

The use of submerged structures has recently been widely used (Pina, 1990). In addition to the function of the submerged structure produced by previous researchers, another function of the submerged structure is to dampen the wave energy that comes to the beach through wave deformation mechanisms such as wave reflection. Wave reflections can be reduced by installing a submerged breakwater. Several previous studies have found that the triangular and quarter-circle submerged breakwaters can reduce the height of the waves before they reach the shore. Through this research, another model of a rectangular submerged breakwater will be developed to reduce wave reflections.

II. LITERATURE REVIEW

Previous research conducted by Hideo Oshikawa et al (2001) on sediment transport using the Bank system (Beach and Navigation Keeper) whose structure resembles a quarter-circle asymmetric breakwater gives the result that the quarter-circle model is 92% able to regulate sediment transport due to the influence of incoming waves. from the high seas. Then another study conducted by H. AfsoosBirria et al (2015) examined the submerged structure which is more optimal in regulating sediment transport compared to the non-submerged structure. In addition, Rusdin et al (2008) researched and found that a series of asymmetrical structures at the bottom of the water can be used to control sediment movement. In addition to the function of the submerged structure produced by previous researchers, another function of the submerged structure is to dampen the wave energy that comes to the beach through the wave reflection. Lifan Dong et al (1996) investigated a submerged breakwater in the form of

a right triangle and an isosceles triangle which resulted that the isosceles triangle model was good in reducing wave height.

Wave reflection is the reflection of waves that occurs when incoming waves hit a wall or barrier. The reflection phenomenon can be found in the harbor pond. The reflection of waves is determined by different coefficients for different types of buildings. The magnitude of the ability of a building to reflect waves is given by the reflection coefficient, which is the ratio between the reflection wave height H_r and the incident wave height H_i :

$$X = H_r/H_i \quad (1)$$

With :

X = Reflection Coefficient

H_r = high wave reflection (m)

H_i = high wave come (m)

The building reflection coefficient is estimated based on model tests. Reflection coefficients for various building types are presented in Table 1.

Table 1. Reflection coefficients for various building types

Building Type	X
Vertical wall above the top of the water	0.7 - 1.0
Vertical walls with submerged peaks	0.5 - 0.7
Pile of stones with slanted sides	0.3 - 0.6
Pile of concrete blocks	0.3 - 0.5
Vertical buildings with energy absorbers (given holes)	0.05 - 0.2

The vertical and impermeable walls reflect most of the wave energy. In such a building the reflection coefficient is $X = 1$ and the reflected wave height is equal to the incident wave height. The wave in front of the vertical wall is the superposition of the two waves with the same period, height, and wave number but in opposite directions.

A wave breaker is a building that functions to break seawater waves thereby reducing the energy in sea water waves. The breakwater structure can be made of massive or rigid structures and flexible structures in the form of live plants, rubble mounts, and floats. So far, breakwater can be used as a tool in defending coastal damage. The form of the breakwater is divided into 4 parts, namely:

1. Slant side breakwater
2. Upright side breakwater
3. Mixed breakwater
4. The submerged breakwater

The following is an example of the oblique and vertical side break breakwater which can be seen in Figures 1 and 2

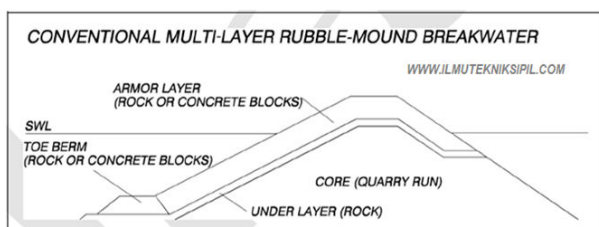


Figure 1. Beveled side breakwater

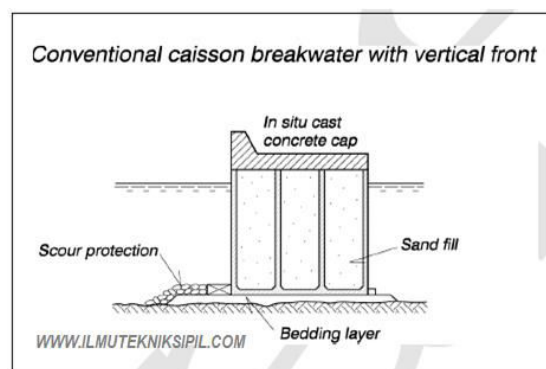


Figure 2. Upright side breakwater

The breakwater as an energy damper consists of four types (Triatmojo, 1999):

- a. A submerged breakwater is a breakwater where the damped wave is allowed to overturn the construction.
- b. Non-submerged breakwater is a breakwater that is hit frontally by the wave during the construction so that the wave immediately breaks when it hits the construction

- c. A floating breakwater is a breakwater that is made to float on the surface of the water so that the kinetic and dynamic energy is simultaneously damped by construction
- d. Floating (submerged horizontal plate) is a breakwater that is built to float in the water in the form of a plate-shaped construction

III. METHODOLOGY

The research conducted was experimental research in the form of laboratory studies. The literature study is carried out by examining previous studies, specifically related to wave reflection. The research materials used in the laboratory are wood as a model- making material, acrylic as a model holder, aluminum glue, rulers, gauges, and writing tools.

Research Instruments:

1. Digital cameras are used to take pictures directly when researching in the laboratory
2. The ruler is used to read the wave height in front of the model and behind the model
3. Aluminum glue is used to glue the model with acrylic
4. Stroke is used to adjust the scale of wave generation
5. Other equipment: pens and paper.

This study using primary data and secondary data. Primary data is in the form of direct observations from the field, namely photos when taking the materials used in the study. Meanwhile, secondary data is in the form of incoming wave height reading data, transmitted wave height, and all data generated after reading. Figures 3 and 4 are an arrangement of models with an acrylic length (B) of 100 cm and Figure 5 is an arrangement of models with an acrylic length (B) of 200 cm

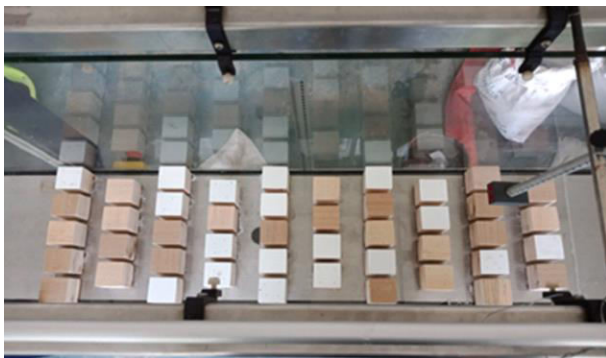


Figure 3 Arrangement of rectangular models in the channel

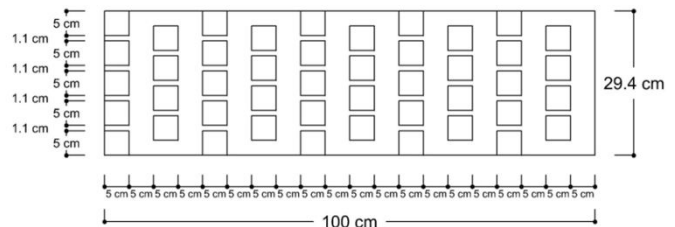


Figure 4 Top view of the model (B = 100 cm)

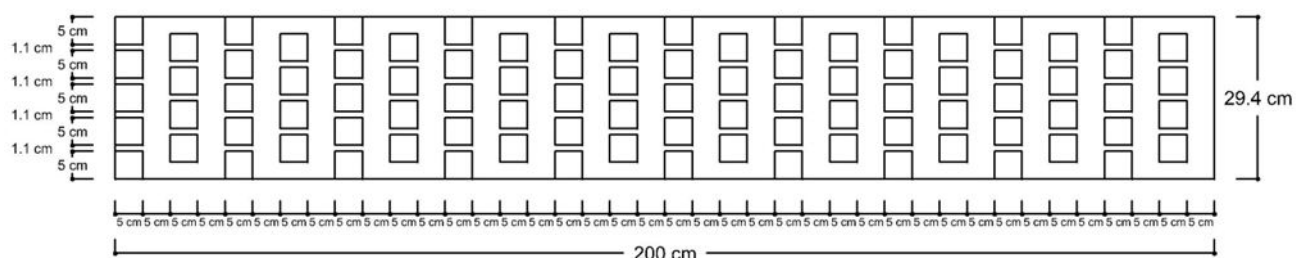


Figure 5 Top view of the model (B = 200 cm)

The data collection technique is in the form of a literature study, direct observation in the laboratory in the form of reading the wave height in front of and behind the model. The data analysis technique used is descriptive analysis systematically and accurately regarding facts and situations related to the object of research. Then the data are organized and concluded according to the research variables related to wave reflection. This study, using an asymmetrical arrangement of a square breakwater. Determination of the arrangement of the model is adjusted to the size of the channel in the laboratory.

IV. RESULT AND DISCUSSION

1. Maximum and minimum wave height

The maximum wave height is obtained by subtracting the reading of the wave height in front of the model, namely the peak height minus the trough height. And from the nine measurement points, the results are then selected the most maximum and minimum. Likewise for reading the nine points behind the model. Following are the results of the calculation of the maximum and minimum wave heights for acrylic lengths of 100 cm and 200 cm

Table 2. Maximum and minimum wave height for depth of 10 cm.

Stroke	Depth (cm)	Period s	WaveLength cm	Hi cm	Hr cm	Kr	Hi/L
4	10	1.1	108	2.35	0.35	0.149	0.022
5			108	2.8	0.3	0.107	0.026
6			108	3.1	0.3	0.097	0.029
4	10	1.2	118	2.2	0.1	0.046	0.019
5			118	2.55	0.15	0.059	0.022
6			118	2.95	0.15	0.051	0.025
4	10	1.3	128	1.6	0.4	0.25	0.013
5			128	2.3	0.2	0.087	0.018
6			128	2.5	0.3	0.12	0.02

Table 3. Maximum and minimum wave height for depth of 15 cm

Stroke	Depth	Period s	WaveLength cm	B = 100 cm		B = 200 cm	
	(cm)			Hmax (cm)	Hmin (cm)	Hmax(cm)	Hmin (cm)
4	15	1.1	133	2.7	2.1	1.9	1.8
5			133	3.6	3.2	2.8	2.4
6			133	4.2	3.7	3.1	2.4
4	15	1.2	145	3.1	2.4	2.3	1.8
5			145	3.4	2.9	2.6	2.1
6			145	4	3.5	3.4	3.1
4	15	1.3	158	2.8	2	1.9	1.3
5			158	3.2	2.3	2	1.4
6			158	3.9	3.4	3	1.9

Table 4. Maximum and minimum wave height for depth of 20 cm

Stroke	Depth	Period s	WaveLength cm	B = 100 cm		B = 200 cm	
	(cm)			Hmax (cm)	Hmin (cm)	Hmax(cm)	Hmin (cm)
4	20	1.1	154	3.8	3.1	2.3	1.7
5			154	4.5	3.9	3.1	2.6
6			154	4.9	4.3	3.4	2.8
4	20	1.2	168	3.8	2.6	2.1	2
5			168	4.4	3.6	3	2.2
6			168	5.2	3.7	3.8	3.6
4	20	1.3	182	3.4	2.1	1.3	1.2
5			182	4	2.6	2	1.9
6			182	4.6	3.1	2.6	2.5

Tables 2, 3, and 4 show the results of the calculation of the maximum and minimum wave heights in front of the model with acrylic lengths (B) for 100 cm and 200 cm. There is a significant difference between the maximum and minimum wave heights with different acrylic lengths. The longer the acrylic (B) for the place to build the model, the lower the wave height that occurs.

2. Height reflection wave

The height of the reflection waves is obtained by using the formula, which is to subtract the maximum and minimum wave heights in front of the model then divide by two. To calculate the reflection coefficient, it is obtained by dividing the height of the reflected wave by the height of the incident wave. Tables 4 to 9 show that the reduction in the height of the reflection waves is influenced by the depth of the water in the sinking breakwater structure. Besides that, the acrylic length for the place to compile the model also greatly influences the height of the reflection waves

Table 4 Reflection coefficient (h = 10 cm and B = 100 cm)

Stroke	Depth (cm)	Period s	WaveLength cm	Hi cm	Hr cm	Kr	Hi/L
4	10	1.1	108	2.35	0.35	0.149	0.022
5			108	2.8	0.3	0.107	0.026
6			108	3.1	0.3	0.097	0.029
4	10	1.2	118	2.2	0.1	0.046	0.019
5			118	2.55	0.15	0.059	0.022
6			118	2.95	0.15	0.051	0.025
4	10	1.3	128	1.6	0.4	0.25	0.013
5			128	2.3	0.2	0.087	0.018
6			128	2.5	0.3	0.12	0.02

Table 5 Reflection coefficient (h = 15 cm and B = 100 cm)

Stroke	Depth (cm)	Period s	WaveLength cm	Hi cm	Hr cm	Kr	Hi/L
4	15	1.1	133	2.4	0.3	0.125	0.018
5			133	3.4	0.2	0.059	0.026
6			133	3.95	0.25	0.063	0.03
4	15	1.2	145	2.75	0.35	0.127	0.019
5			145	3.15	0.25	0.079	0.022
6			145	3.75	0.25	0.067	0.026
4	15	1.3	158	2.4	0.4	0.167	0.015
5			158	2.75	0.45	0.164	0.017
6			158	3.65	0.25	0.069	0.023

Table 6 Reflection coefficient (h = 20 cm and B = 100 cm)

Stroke	Depth (cm)	Period s	WaveLength cm	Hi cm	Hr cm	Kr	Hi/L
4	20	1.1	154	3.45	0.35	0.101	0.022
5			154	4.2	0.3	0.071	0.027
6			154	4.6	0.3	0.065	0.03
4	20	1.2	168	3.2	0.6	0.188	0.019
5			168	4	0.4	0.1	0.024
6			168	4.45	0.75	0.169	0.026
4	20	1.3	182	2.75	0.65	0.236	0.015
5			182	3.3	0.7	0.212	0.018
6			182	3.85	0.75	0.195	0.021

Table 7 Reflection coefficient (h = 10 cm and B = 200 cm)

Stroke	Depth (cm)	Period s	WaveLength cm	Hi cm	Hr cm	Kr	Hi/L
4	10	1.1	108	2.25	0.35	0.156	0.021
5			108	2.6	0.3	0.115	0.024
6			108	2.9	0.3	0.103	0.027
4	10	1.2	118	2.1	0.1	0.048	0.018
5			118	2.35	0.15	0.064	0.02
6			118	2.65	0.15	0.057	0.022
4	10	1.3	128	1.6	0.4	0.25	0.013
5			128	2.1	0.2	0.095	0.016
6			128	2.3	0.3	0.13	0.018

Table 8 Reflection coefficient (h = 15 cm and B = 200 cm)

Stroke	Depth (cm)	Period s	WaveLength cm	Hi cm	Hr cm	Kr	Hi/L
4	15	1.1	133	2.5	0.3	0.12	0.019
5			133	3.1	0.2	0.065	0.023
6			133	4.05	0.25	0.062	0.03
4	15	1.2	145	1.85	0.35	0.189	0.013
5			145	2.75	0.25	0.091	0.019
6			145	2.95	0.25	0.085	0.02
4	15	1.3	158	2	4	0.2	0.013
5			158	2.45	0.45	0.184	0.016
6			158	2.35	0.25	0.075	0.021

Table 9 Reflection coefficient (h = 20 cm and B = 200 cm)

Stroke	Depth (cm)	Period s	WaveLength cm	Hi cm	Hr cm	Kr	Hi/L
4	20	1.1	154	2.65	0.35	0.132	0.017
5			154	3.7	0.3	0.081	0.024
6			154	4.4	0.3	0.068	0.029
4	20	1.2	168	2.8	0.6	0.214	0.017
5			168	3.6	0.4	0.111	0.021
6			168	4.65	0.75	0.161	0.028
4	20	1.3	182	1.95	0.65	0.333	0.011
5			182	2.8	0.7	0.25	0.015
6			182	3.35	0.75	0.224	0.018

3. The relationship between the reflection coefficient and the steepness of the wave (Hi/L) in the square model(B = 100 cm dan B = 200 cm)

To see the change in wave height passing through a square sinking breakwater, the relationship that can be drawn is the steepness of the wave (Hi / L) to the reflection coefficient. This relationship is shown in Figures 6 and 7.

Relationship Chart Kr Vs Hi/L

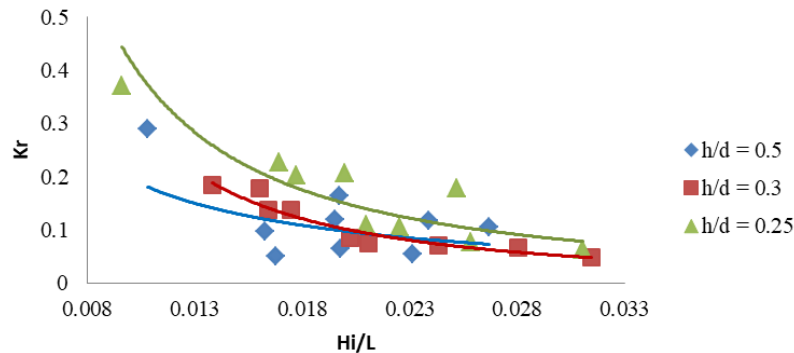


Figure 6 Relationship reflection coefficient and Hi/L (B = 100 cm)

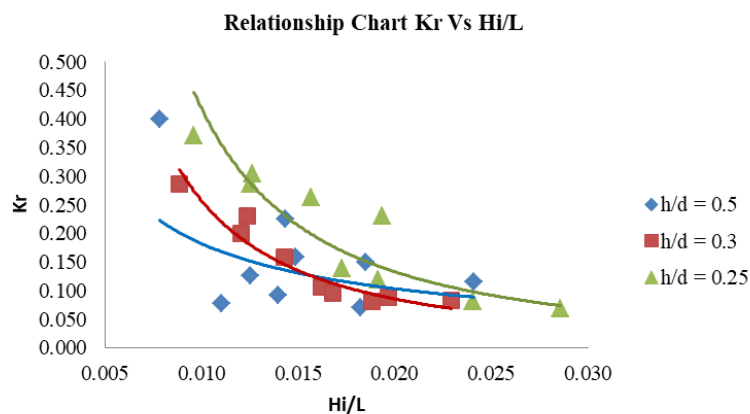


Figure 7 Relationship reflection coefficient and Hi/L (B = 200 cm)

Figures 6 and 7 show that the value of the reflection coefficient on wave steepness (H_i / L) is decreasing. The closer the model to the water depth, the greater the reflection coefficient that occurs. Then the reflection coefficient is also greatly influenced by water depth and the length of the model arrangement. In addition, the reflection coefficient is also influenced by the wavelength, where the longer the wavelength, the smaller the reflection coefficient

V. CONCLUSION

Based on the results of data processing and data analysis, it is found that the square model used as a sinking wave breaker which is arranged asymmetrically affects the reflection coefficient that corresponds to the depth of water and the length of the model (B). The closer the model is to the water surface, the greater the reflection coefficient value. Likewise, if the model is further away from the water surface, the reflection coefficient value will decrease. This is because the incoming waves are transmitted more than reflected by the height of the structure (model) used.

REFERENCES

- [1] ArkalVittal H., L. Ravikiran., 2013, Wave Structure Interaction For Submerged Quarter Circle Breakwaters Of Different Radii – Reflection Characteristics, World Academy Of Science Engineering and Technology, Volume 7
- [2] Armano, H.D., Hall, K. R., 2002, Wave Transmission On Submerged Breakwaters Made Of Hollow Hemispherical Shape Artificial Reefs, Canadian Coastal Conference.
- [3] Azhar M. Rian, Wurjanto A., Yuanita N, 2011, Studi Pengamanan Pantai Tipe Pemecah Gelombang Tenggelam di Pantai Tanjung Kait, Tesis



- [4] Biria A. H., Neshaei L.A.M., Ghabraei A., Mehrdad A.M., 2015, Investigation of Sediment Transport Pattern and Beach Morphology In The Vicinity Of Submerged Groyne, Springer Journal, Volume 9: PP 82-90
- [5] Chang K.H., Liao C.J., 2007. Long Wave Reflection From Submerged Trapezoidal Breakwaters. Elsevier Journal. 34 : 185-191.
- [6] Dong L., Akira W., Masahiko I., 1996, Nonlinear Wave Transformation Over a Submerged Triangular Breakwater, Research Engineer, River Engineering.
- [7] Dauhan Kristie S., 2013, Analisis Karakteristik Gelombang Pecah Terhadap Perubahan Garis Pantai di Atep Oki, Jurnal Teknik Sipil Statik, Volume 1 no.12:784-796
- [8] Fatnanta F., 2011, Kajian Perilaku Transmisi dan Stabilitas Pemecah Gelombang Kantong Pasir Tipe Tenggelam, Disertasi
- [9] Fatnanta F., Pratikto W. A., Armono H. D., Citrosiswoyo W., 2011. Perilaku Deformasi Gelombang Kantong Pasir Tipe Tenggelam. Jurnal Teori dan Terapan Bidang Rekayasa Sipil. 18: 171-179.
- [10] Gangadhar K., 2013, Wave Transmission Of Submerged Inclined Serrated Plate Breakwater, International Journal Of Chemical, Volume 1
- [11] Nur Yuwono. 1994. Perencanaan Model Hidraulik. Laboratorium Hidraulik dan Hidrologi UGM. Yogyakarta.
- [12] Oshikawa H., Komatsu T., 2001. Control Of Substance Transport Using Submerged Asymmetrical Structures In Wave Fields. Department of Urban and Environmental Engineering, Kyushu University, Japan.
- [13] Ponte Castro A., Iglesias G., Pinto T. F., Carballo R., 2009, Wave Reflection At Submerged Breakwaters,
- [14] Triatmodjo, B., 2012. Perencanaan Bangunan Pantai. Jilid II. UGM: Yogyakarta.



INNO SPACE
SJIF Scientific Journal Impact Factor
Impact Factor: 8.118



ISSN INTERNATIONAL
STANDARD
SERIAL
NUMBER
INDIA



INTERNATIONAL JOURNAL OF INNOVATIVE RESEARCH

IN SCIENCE | ENGINEERING | TECHNOLOGY

 **9940 572 462**  **6381 907 438**  **ijirset@gmail.com**



www.ijirset.com

Scan to save the contact details