



e-ISSN: 2319-8753 | p-ISSN: 2347-6710

# IJRSET

International Journal of Innovative Research in  
**SCIENCE | ENGINEERING | TECHNOLOGY**



# INTERNATIONAL JOURNAL OF INNOVATIVE RESEARCH

IN SCIENCE | ENGINEERING | TECHNOLOGY

Volume 12, Issue 5, May 2023

**ISSN** INTERNATIONAL  
STANDARD  
SERIAL  
NUMBER  
INDIA

Impact Factor: 8.423

# Application of Machine Learning in Opitz Classification

Sarthak Sharma<sup>1</sup>, Vansh Malik<sup>2</sup>, Surkhaab Singh Sandhu<sup>3</sup>

U.G. Student, Department of Mechanical Engineering, Delhi Technological University, Bawana Delhi, India<sup>1</sup>

U.G. Student, Department of Mechanical Engineering, Delhi Technological University, Bawana Delhi, India<sup>2</sup>

U.G. Student, Department of Mechanical Engineering, Delhi Technological University, Bawana Delhi, India<sup>3</sup>

**ABSTRACT:** A Grouping is a strategy of foreseeing comparable data in light of the upsides of an unmitigated variable or downright Class Variable. It's a powerful strategy for any sort of information that is factual. These calculations are used to achieve different undertakings, for example, Picture characterization, Prescient model, Information mining procedures, etc. The essential objective for regulated learning is make an unambiguous and straightforward model of the dispersion of class marks in view of indicator attributes. The classifiers then are utilized to group the class marks of the test cases in which the prescient elements are known, as opposed to the meaning of the class name, which isn't known. In this paper, we show different arrangement techniques utilized in AI regulated. Catchphrases: Characterization, managed, AI, design acknowledgment.

**KEYWORDS** :- Opitz, machine learning

## I. INTRODUCTION

Within the midst of various techniques of component classification structures within GT, Opitz coding device [18] is some of the maximum widely used strategies. In the beginning, Opitz coding system recognizes production factors and list them in a predetermined series of digits to form an algorithm. A entire of three hundred geometrical or topological features are diagnosed as wonderful Opitz elements to be defined into the form of digits. Moreover, with the several opportunities of blending individual abilities inside the code, round 30,000 capabilities can be recognized. In this newsletter, to collect an Opitz codes, two techniques were used; automatic characteristic popularity (AFR) and a rule-based absolutely device (described in the next sections). The Opitz code is constituted of 14 numbers, divided into 3 lessons. The primary one, from 1st-fifth digit is known as "shape code" dedicated for abilities of layout, which includes topological and geometrical data (Fig three.1). The second grouping from 6th to 10th is used as a supplementary code for manufacturing characteristics. The final category of numbers 11th-14th are secondary codes to signify the type of operation in production and series. Opitz is a system of five primary figures, and each can be assigned numbers ranging that range from 0-9. which means that each one in all that there are 50 unique factors which might be recognized by Opitz code.

First magnificence of Opitz code, which is also the form code it's far this number one amount that acts as the critical quantity that differentiates among non-rotational and rotating additives. Additionally the digit calculates a dimensional percent to assess the geometrical form of the. For the rotational components, the code calculates to calculate the size (L) in addition to the scale (D) of thing through manner of decreasing the order. The second one digit represents outside shapes and paperwork they're recognized as conical, stepped, or immediately strains. The grooves and threads are important. The 1/three quantity is for internal paperwork, and functions encompass strong and directly, bore, right now or bored with the stepped diameter. Threads and grooves are quintessential components. The fourth digit is used for surface plane machining like outside or inner curves, slots, and splines. The 5th digit is for holes in auxiliary in addition to gear tooth. Within the magnificence of more codes there are four numbers which is probably used for the primary one. The number one is the diameter or period of the piece, the second one is for the fabric being this is used, and the 1/three refers to uncooked cloth inclusive of spherical bars sheet steel, sheet metal or tubing, and the fourth one is for the precision of the paintings piece.



## II. LITERATURE REVIEW

### **MACHINE LEARNING IN MANUFACTURING INDUSTRY.**

The assembling business is as of now seeing a record breaking blast in realities (Chand and Davis 2010,). The information they obtain consolidate a dispersion of configurations, semantics and pleasant, for example sensors information from the delivering line, ecological records framework instrument boundaries, etc. (Davis et al., 2015). novel names are applied for these peculiarities, for example Industrie four.0 (Germany), shrewd assembling (US), and brilliant assembling office (South Korea). The blast and openness of huge amounts of realities are many times called gigantic data (Lee Lapira, Lee Bagheri, Lee, and Kao, 2013). the accessibility of for example acceptable related insights , can help upgrade the top notch of item and framework maintainable (Elangovan, Sakthivel, Saravanamurugan, Nair, and Sugumaran, 2015). in any case, it's far expressed that the wealth of data might be a wellspring of disarray and can be negative inside the experience that it would be able, for example rationale disarray roughly the most basic issues/causes or achieve not on time or mistaken decision about the top notch bearing of activity (Lang, 2007). at last, it is hopefully presumed that assembling bunches should notable that with an end goal to acquire the advantages of further developed availability of measurements, for example to upgrade top notch notwithstanding for charge assessment of assembling and additionally system advancement more prominent comprehension of the requirements of the client and wishes, etc. it is fundamental to have manual for adapt to the huge amount, intricacy and elements (Davis and Co., 2015; Loyer, Henriques, Fontul, and Wiseall, 2016; Wuest, 2015).

### **THE BLESSINGS OF DEVICE STUDYING APPLICATIONS IN PRODUCTION.**

The main benefits of ML were validated in preceding sections , which have said that ML techniques can tackle NP-whole problems that often arise in relation to optimizing problems in computerized manufacturing tactics (Monostori and associates., 1998). within the next segment dialogue, the emphasis is at the capacity of ML techniques to cope with huge-scale, multi-variate statistics and their ability to discover implicit connections inside huge facts sets in a dynamic and complex every so often turbulent context (Koksal, Batmaz, &Testik, 2011; Yang &Trewn, 2004). "considering the fact that the majority of producing and engineering troubles are primarily based on information, but they may be now not facts-rich' (Lu, 1990), ML offers an opportunity to decorate know-how of the field. In this text we will talk the advantages within the hope of a generalization of ML's blessings in wellknown. it is to be cited that the particulars of the blessings ought to range consistent with the technique of ML.

### **MACHINE LEARNING CHALLENGES IN MANUFACTURING.**

The maximum common difficulty faced by using ML programs for production includes the gathering of applicable statistics. this will be a project in terms of availability, nice and shape (e.g. Are meta-data a part of the facts? are statistics categorized?) of the producing information on in hand could have a major effect on the efficiency of algorithms primarily based on ML. some of the challenges the records-set might also comprise may be, e.g. high-dimensional statistics will be used to symbolize certain ML algorithms. that is the facts-set should have substantial quantities of unrelated and redundant information that could affect the overall performance of algorithms for studying (Yu Liu and Yu, 2003). nowadays, the general public of machines learn how to address information that has nominal and non-stop values (Pham and Afify, 2005). The extent to which the impact is depending on numerous factors , together with the set of rules and parameters. it is as a common hassle for research in production, however no longer just ML application in obtaining any facts because of e.g. safety issues or surely a inability to seize facts within the method. at the same time as usually ML permits the extraction of data and produces better results than conventional techniques which have much less needs at the information to be had, some elements approximately the data to be had that might avert the achievement of the application must be considered. at the side of the subsequent paragraph, this emphasizes the need to realize the information a good way to make use of the ML method. Hoffmann ( 1990) notes that in assessment to standard strategies, wherein a large portion of the time is spent in extracting facts, in ML plenty of the time is spent in growing the statistics.

After the measurements is gotten, they might require pre-handling in view of the details of the calculation chose. PrePre cure of records is a boss affect at the absolute last results. nonetheless, there are different general instruments that offer the most renowned pre-handling strategies like regularizing and sifting realities. it is additionally evaluated on the off chance that the realities getting utilized for instruction are imbalanced. this will represent an issue inside the procedure of preparing specific calculations. in the assembling system there is a typical issue that the upsides of specific credits are not helpful or not present inside the arrangement of data (Pham and Afify, 2005). those missing qualities are provokes for the execution to ML calculations. There are a couple of strong enlistment techniques that could fill the distance (Pham and Afify, 2005). be that as it may, each difficulty after which later executed ML calculation has its



own special wishes when it comes down to supplanting void qualities. while supplanting lacking qualities the bona fide records-set can be motivated. The goal is to pushed off the effect of predisposition as well as other poor affect as some distance as attainable to the reason for the assessment. since this is a trouble that is extremely revered and an enormous amount of examination and replies (for example inside the R) which can be to be had (for example Graham, 2012; Kabacoff, 2011; Kwak and Kim, 2012; Li and Huang, 2009).

III. PURPOSED METHODOLOGY

The STEP archive is changed over completely to an Opitz code To accumulate the Opitz Code from a Stage report there are three territories, as delineated in observe. four.1. the main confirmation manages STEP report handling, considering, and perusing the data needed to help Opitz capabilities. The stop final product of this stage is an unprejudiced and fair realities that is adequate to be removed Opitz abilities. Assuming computer aided design records had been saved in particular organizations , along with IGES instead of STEP this cycle might be made in that configuration to make equivalent results, and the contrary degrees may be comparable. the standard motivation to select STEP records is a result of the truth that miles a typical configuration is fit for be used in an assortment of computer aided design programming bundles. because of the personality of literary records in Sync documents the reports were treated in that capacity , and there has been no requirement for remarkable treatment for coordinating or breaking down archives. After the document end up read the parts could be saved in a hashmap and substances were made reliable with. they may furthermore have the option to shape a symmetrical chart due to the personality of their interconnection and additionally to tune their geography. the second one recognition utilizes fair records supported with situating certificate. every degree is a great situating stage for everything about Opitz include.

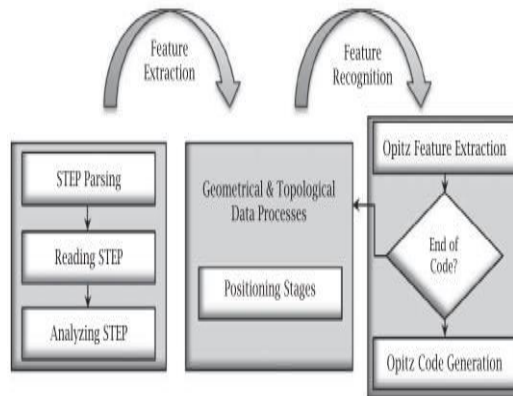


Figure 1 The proposed Opitz feature extraction and recognition framework.

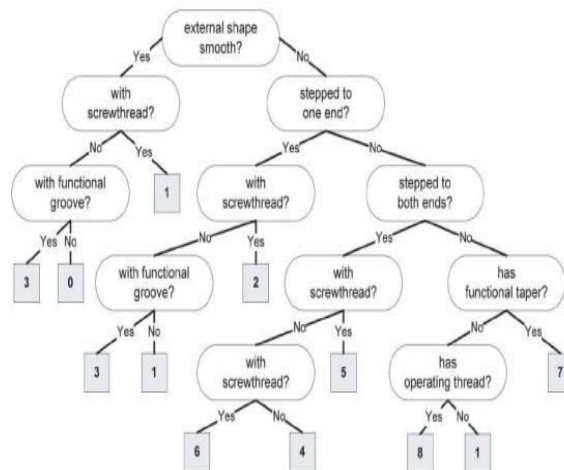


Figure 2. Opitz Code Tree for the second digit (1st < 3).



distinct from the opportunity code. There isn't always any statistics within the STEP file about the fabric used, or perhaps accuracy in this difficulty. as a result, it became decided that the digits need to be enter by manner of the patron themselves. regarding the closing digit that refers to accuracy, a present day method was observed. the recognition method desires to be bendy enough to allow for character input, and on occasion, character errors. A positive degree of flexibleness is set up to every characteristic (or the digit) however imparting the client with the ability to modify the level. In latest , the subsequent pointers for recognition of features have

been put forward: The reason we handiest recollect Z-plane and Y-aircraft is because for rotating parts like an cylinder, they could most possibly be perpendicular both of the Y or Zaxes, and that is enough. This concept may be extended to non-rotating additives also, however, on this state of affairs, the surfaces might be gift however their properties can be extrapolated from other planes (saves time but doesn't produce the clearest code). moreover that the 0.33 type of floor might also range from the ones parallel to the X-axis rendering the guideline much less green..

IV. RESULT

Hierarchical Representation of the Developed Rules

The next figures include the figure. 5.1 and Fig. 5.2 and Fig. 5.2, show the rule sets that can be used to define the particular Opitz characteristic. Fig. 5.3 is dedicated to this rule set R2 that pertains to operations involving plane surfaces that are that are parallel to the Y-plane. Furthermore Fig. 8 outlines an R3 rule-set R3 and the sequences required to reach it. Also, the operations that determine the operations that involve plane surfaces that are parallel to the the Y-plane.

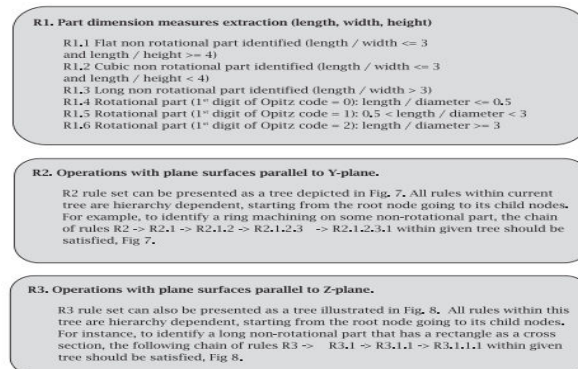


Figure 4 . Rules for Opitz feature recognition of surfaces parallel to Y-plane for STEP-based data.

The function reputation technique within the proposed methodology has been constrained to the manufacturing characteristic area. that is but one of the essential desires of the method for the reason that this classification might be used afterward in CAPP. The system become applied as an test to set up how to extract, complete and define the Opitz numbers. The system became take a look at with one of a kind sorts of records. the first became a few on line assets from unique manufacturers had been tested the use of this method to find real-world CAD-fashions that cowl the entire variety of diverse characteristics of the product. furthermore, a few CAD fashions were developed after which tested. After reading the implemented technique, the following troubles were developed. the first problem is linked to Opitz code. It happens while grooves are not discovered and an top curving Machining is observed for non-rotational components. this is the case Opitz code offers the category of grooves or top machining. It does now not offer class for both of the capabilities concurrently. this is why the algorithm has to pick one characteristic and forget about the other. further, for non-rotational portions there are three Opitz code companies for aircraft floor machine: one plane this is stepped, any other plane surface, and a horizontally inclined stepped floor or opposite (4th 4th digit in Opitz code = 2, three , and four respectively). those 3 organizations range in ways of machining but as a end result the identical shape of the element. that means for the characteristics that belong to these three organizations the set of rules most effective has the form geometry, now not the machining method. therefore, it is not feasible to attach any unique characteristic to the strict magnificence as there may be a relationship to the class of the 4th the digit Opitz code = 2. Thirdly, there are problems with the counting of cylindrical surfaces for rotating elements. this is a software mistakes, no longer a methodological. There were also some problems with the popularity of grooves and stepped bores have been identified.



in addition to the problems recognized that had been deemed to be minor, the base algorithms and the evolved functionality witness's pinnacle-fine effects have been demonstrated to have the capability to recognize a entire variety of functions on non-rotational long, flat cubic and rotating parts with the best conformance to the Opitz codes class systems. in addition the number one problem with using Opitz codes for type is that a piece of system may be transformed into an precise code, but an Opitz code doesn't necessarily suggest a particular piece [2929]. As Fig 9. in the present parent, there may be an genuine Opitz code this is used for two awesome elements. this means that the equation in question cannot be an injection function. 6.1. To in addition differentiate it there ought to be an injective function to be used for the required domain. To summarise the gadget presently in location, it must hire an injective feature to acquire the ideal solution.

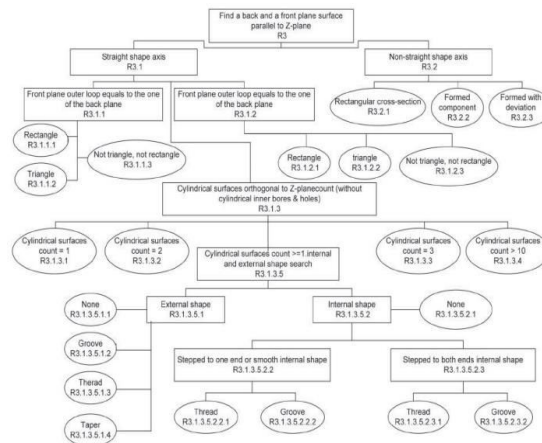


Figure 5.. Rules for Opitz feature recognition of surfaces parallel to Z-plane for STEP-based data.

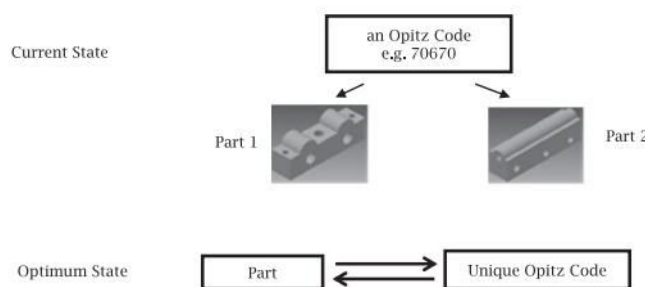


Figure 6. Challenge of the Opitz code uniqueness

V. CONCLUSION

The number one purpose of this study was to devise a way which allows reputation of capabilities on products and extraction using a popular element form layout that is in keeping with the Opitz Code type system. on the way to gain this goal the type system built on Opitz code for each rotational and non-rotational components turned into designed. group technology (GT) as approach of type that relies on function popularity became assessed together with Opitz codes as an method for GT turned into used on this take a look at. The machine was advanced with the assist of Java programming language. The StEP's representation layout is hired to expose unique component-form topology and geometry. when the STEP documents is uploaded into the machine, the characteristic extraction is initiated at the side of the technology of an Opitz Code Signature. The manner shows an "category" at the same time as having the Opitz code in the form of an image signature. because the final final results of this version is an already defined organization in accordance with organization generation. A person interface with graphical photographs is likewise to be had for users to choose their the favored STEP document and also to track the manner of recognition of capabilities with particular indicators, and additionally the coming near near Opitz signature. for the duration of evaluation a few minor issues concerning Opitz code had been recognized. these encompass mistakes due to inadequate manufacturing facts. The purpose is Opitz class is primarily based on groupings of numerous production statistics that isn't completely



supported in STEP shapes. This problem may be solved programming code refinement and by extending STEP presentation to include the required manufacturing information.

#### REFERENCES

- [1] Abouel-Nasr, E.; Kamrani, A.: A new methodology for extracting manufacturing features from CAD system, *Computers & Industrial Engineering*, 51(3), 2006, 389–415. <http://dx.doi.org/10.1016/S0010-1016/j.cie.2006.08.004>
- [2] Ayon Dey “Machine Learning Algorithms: A Review” *International Journal of Computer Science and Information Technologies*, Vol. 7 (3) , 2016, 1174-1179.
- [3] Search and classification in spatial databases. *Proceedings of sixth symposium on large spatial databases*; 1999. 207–26.
- [4] Babic, B.; Nesic, N.; Miljkovic, Z.: A review of automated feature recognition with rule-based pattern recognition, *Computers in Industry*, 59(4), 2008, 321–337. <http://dx.doi.org/10.1016/j.compind.2007.09.001>
- [5] Bilello, P.: What Does a Successful PLM Implementation Look Like?, *PLM Innovation Conference 2012*, Munich, 2012.
- [6] Chen, C.-S.: A form feature oriented coding scheme, *Computers & Industrial Engineering*, 17 (1–4), 1989, 227–233. [http://dx.doi.org/10.1016/0360-8352\(89\)90066-1](http://dx.doi.org/10.1016/0360-8352(89)90066-1)
- [7] Chitra Nasa, Suman “Evaluation of Different Classification Techniques for WEB Data “ *International Journal of Computer Applications (0975 – 8887) Volume 52– No.9*, August 2012.
- [8] Cybenko, G.; Bhasin, A.; Cohen, K.: Pattern recognition of 3D CAD objects. *Smart Engineering Systems Design* (1), 1997, 1–13.
- [9] Cyr, C.-M.; Kimia, B.: 3D object recognition using shape similarity-based aspect graph, *Proceedings of ICCV’01*, 2001. 254–61. <http://dx.doi.org/10.1109/ICCV.2001.937526>
- [10] Donaldson, I.-A.; Corney, J.-R.: Rule-based feature recognition for 2.5D machined components. *Int J Comput Integr Manufact*, 6(1&2), 1993, 51–64.
- [11] El-Mehalawi, M.; Miller, R.-A.: A database system of mechanical components based on geometric and topological similarity. Part I: Representation, *Computer Aided Design*, 35(1), 2003, 83–94. [http://dx.doi.org/10.1016/S0010-4485\(01\)00177-4](http://dx.doi.org/10.1016/S0010-4485(01)00177-4)
- [12] El-Mehalawi, M.; Miller, R.: A database system of mechanical components based on geometric and topological similarity. Part II: indexing, retrieval, matching and similarity assessment. *Computer-Aided Design*, 35(1), 2003, 95–105. [http://dx.doi.org/10.1016/S0010-4485\(01\)00178-6](http://dx.doi.org/10.1016/S0010-4485(01)00178-6)
- [13] Gao, F.; Roller, D.: Modeling of Feature-based Design Process, *proceedings of DETC’98, ASME design engineering technical conferences 1998*.
- [14] Hummel, K.-E.: Coupling rule-based and object oriented programming for the classification of machined features, *Proceedings of the ASME International Computers in Engineering Conference*, Anaheim, CA, USA, 1989, 409–418.
- [15] Iyer, N.; Jayanti, S.; Lou, K.; Kalyanaraman, Y.; Ramani, K.: Shape-based searching for product lifecycle applications, *Computer-Aided Design*, 37 (13), 2005, 1435–1446. <http://dx.doi.org/10.1016/j.cad.2005.02.011>



**INNO SPACE**  
SJIF Scientific Journal Impact Factor  
**Impact Factor: 8.423**



**ISSN** INTERNATIONAL  
STANDARD  
SERIAL  
NUMBER  
INDIA



# INTERNATIONAL JOURNAL OF INNOVATIVE RESEARCH

IN SCIENCE | ENGINEERING | TECHNOLOGY

9940 572 462 6381 907 438 [ijirset@gmail.com](mailto:ijirset@gmail.com)



[www.ijirset.com](http://www.ijirset.com)

Scan to save the contact details