



e-ISSN: 2319-8753 | p-ISSN: 2347-6710

# IJRSET

International Journal of Innovative Research in  
**SCIENCE | ENGINEERING | TECHNOLOGY**



# INTERNATIONAL JOURNAL OF INNOVATIVE RESEARCH

IN SCIENCE | ENGINEERING | TECHNOLOGY

Volume 12, Issue 5, May 2023

**ISSN** INTERNATIONAL  
STANDARD  
SERIAL  
NUMBER  
INDIA

Impact Factor: 8.423

# Automatic Waste Management and Handling System

**Zeeshan Patel<sup>1</sup>, Pratham Doddamani<sup>2</sup>, Prabuddh Salave<sup>3</sup>, Shivam Madale<sup>4</sup>, Pavan Patil<sup>5</sup>,  
Jayshri Sachdev<sup>6</sup>**

Diploma. Student, Department of Computer Engineering, AG Patil Polytechnic Institute, Solapur, Maharashtra, India<sup>1</sup>

Diploma Student, Department of Computer Engineering, AG Patil Polytechnic Institute, Solapur, Maharashtra, India<sup>2</sup>

Diploma Student, Department of Computer Engineering, AG Patil Polytechnic Institute, Solapur, Maharashtra, India<sup>3</sup>

Diploma Student, Department of Computer Engineering, AG Patil Polytechnic Institute, Solapur, Maharashtra, India<sup>4</sup>

Diploma Student, Department of Computer Engineering, AG Patil Polytechnic Institute, Solapur, Maharashtra, India<sup>5</sup>

Lecturer, Department of Computer Engineering, AG Patil Polytechnic Institute, Solapur, Maharashtra, India<sup>6</sup>

**ABSTRACT:** As the populace is expanding step by step, the earth ought to be spotless and clean. In a large portion of the urban communities the overflowed refuse containers are making an unhygienic situation. This will additionally prompt the emergence of various kinds of anonymous sicknesses. This will debase the way of life. To beat these circumstances a proficient brilliant rubbish administration technique must be produced. This task proposed a thought of checking waste containers at 3 places. The scent and moistness of rubbish is constantly checked by separate sensors. As indicated by scent and mugginess, esteems pushing of refuse further will occur. The ultrasonic sensor is utilized for observing the level of refuse in the tank and as indicated by this level, the principle controller chooses which vehicle (truck or smaller than expected truck) ought to go to get the trash. LCD will show the course vehicle needs to take after.

**KEYWORDS:** Automation, Wemos d1 mini, Garbage Management, Cloud, Humidity, Odour

## I. INTRODUCTION

The way toward making things programmed is expanding step by step with the goal that client can screen or control anything effortlessly. Influencing this programmed will to decrease the working weight on human. The cost and working in manual working of anything is all the more so by utilizing mechanization we can lessen cost and additionally working. Considering waste or trash administration in any region or city is significant issue current city.

The right waste administration is must for the general public and in addition in city or anyplace on the planet.. Solid waste which is one of the sources and purposes behind environmental tainting has been described under asset preservation and recuperation go about as any solid, semi-solid liquid or contained vaporous materials discarded from present day, business, mining or rustic tasks and from bunch works out. Solid waste in like manner consolidates junk, improvement debris, business can't, and slop from water or waste treatment plants or air tainting, control workplaces and other discarded materials. Remembering the true objective to shield human prosperity and the earth from the potential dangers of put off misuse exchange and normal pollution an effectively directed and controlled treatment of these wastes is must.

The sort of wastes which constitute regular defilement and which this work underlines on is private decrease containing degradable sustenance misuses, leaves, dead animals and non-degradable ones, for instance, plastics, bottles, nylon, restorative and recuperating focus misuses, delivered in families, facilities, endeavors and business centres.

## II. RELATED WORK

"Swachh Bharat Abhiyaan" is a national fight begun by the Government of India, which covers 4,041 urban territories and towns, to clean the roads, boulevards and establishment of the country. The essential saying of the mission is to cover all the commonplace and urban scopes of the country. With extension of Internet of Things (IoT) contraptions,



for instance, Smartphone and sensors, this paper portrays the effective dry and wet soil gathering using Embedded System. The essential saying of the application is amassing of dry and wet waste freely which is placed in a vehicle line on which the dry waste accumulated clean compartments are set left side and wet waste assembled containers on right side. Exactly when the belt starts rotating clockwise the spotless canister's best is therefore closed, in the meantime the waste is dumped into the underground garbage compartment set at the ground floor. Here IoT module is used to control and screen the waste and the information will be sent to the particular affiliation and the typical man. The adaptable application exhibits the social occasion of waste and the particular date and landing time of the vehicle.

At demonstrate solid waste organization is an imperative stress in the metropolitan urban networks of the making and made countries. In this season of Internet, IOT (Internet of Things) can be used effectively to manage this solid waste. In this paper, we have analyzed the importance of Internet of Things and its parts, testing and prototyping instrument cooja test framework in conclusion the examination of various composed works available on sharp waste organization structure using IOT.

To avoid all such risky circumstance and keep up open tidiness and prosperity this work is mounted on a canny garbage structure. The principal subject of the work is to develop a sharp watchful trash prepared system for a true blue waste organization. In the wake of cleaning the dustbin, the driver confirms the task of depleting the garbage with the guide of RFID Tag. RFID is an enrolling development that is used for affirmation process and in addition, it in like manner enhances the sharp trash prepared system by giving modified distinctive evidence of garbage filled in the dustbin and sends the status of clean up to the server demanding that the work is done. An Android application is created and associated with a web server to propose the cautions from the microcontroller to the urban office and to play out the remote seeing of the cleaning strategy, done by the workers, thusly reducing the manual system of checking and affirmation. The notification are sent to the Android application using Wi-Fi module [3]. To vanquish these conditions a gainful splendid waste organization method must be made. As the degree of IoT is making well ordered reasonable strategies can be found adequately. Distinctive designs were proposed and have ideal conditions and moreover hindrances. This paper is an investigation in perspective of Smart Garbage Management in Cities using IoT. This audit incorporates distinctive wise decline organization contemplations that can be easily actualized.

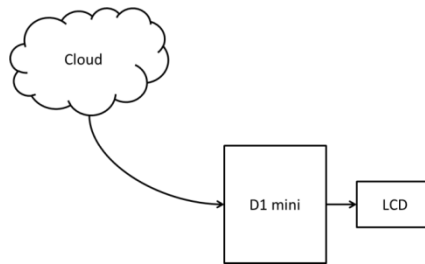
In our city, dustbins set at open spots are flooding. It makes unhygienic conditions for the people. Also it makes peculiarity to that place. Meanwhile horrible stench is in like manner spread. To give a compact delineation, at general society puts, the sensors are set in the essential waste compartments. Exactly when the waste accomplishes the level of the sensor, by then that sign will be given to PIC microcontroller. Robot used to accumulate the misfortunes in the wake of accomplishing high wastage level. To move the robot from garbage region and void the wastage by Using DC Motor. The waste filling level and air tainting level is sent as message through GSM modem interface to the microcontroller.

### **III. METHODOLOGY**

Data collected by cloud is from 3 different places as shown in figure above. Odour sensor is used to detect intensity of odour. And wetness of garbage is detected by humidity sensor. The ultrasonic sensor is used for detecting level of garbage in bin. Value of ultrasonic sensor, humidity sensor and odour sensor is updated on cloud.

The motor is used for pressing garbage in downward direction and it has following two conditions

- If the garbage is dry then it will press garbage or motor will be ON and if the garbage is wet then motor will be OFF
- If garbage smells then the motor will not press garbage but if it not crossed the threshold then garbage will be pressed further to make some space for new garbage.

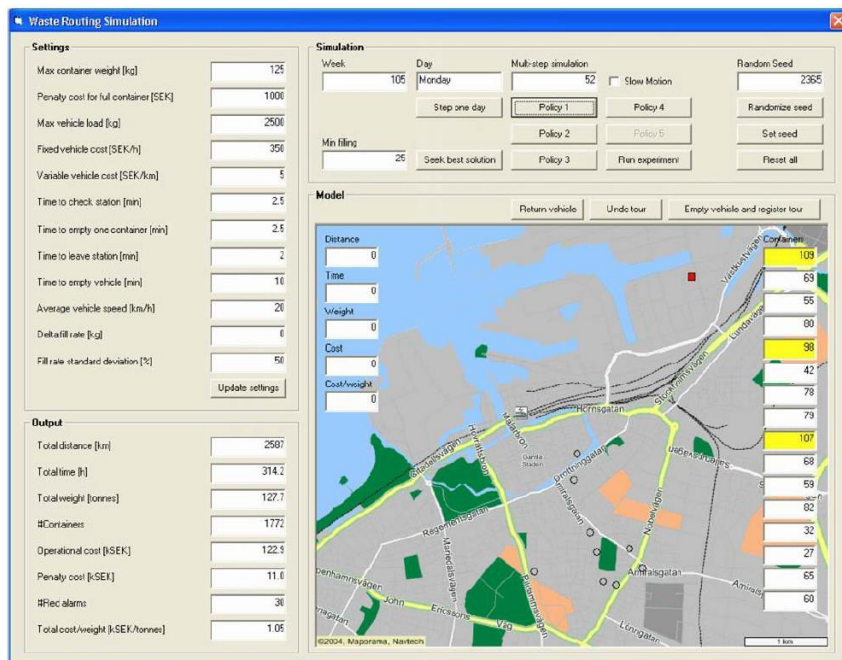


D1 mini which placed at the receiver side fetched the data stored in cloud and display on LCD. The main work of receiver is divided as follows:

- It decides whether a truck or mini truck should pick up garbage from bins according to garbage level in that bin.
- It took decision about the path a truck should follow.

#### IV. EXPERIMENTAL RESULTS

Note: x-axis unit of measure is the research’s publication year while y-axis unit of measure is the number of research publications for a specific year.



In Fig. 4, it is presented the Malmoe simulation model proposed in the paper. The paper presents capacity sensors and wireless communication equipment embedded in recycling bins. In the IoT infrastructure, the research effort provides waste collection operators and access to real time information about of the status of each bin. The architecture uses analytical modelling and discrete-event simulation to evaluate dynamic scheduling and routing by utilizing real-data. Furthermore, the discussed research performs an empirical simulation based on real experimental data from a recycling station in Malmoe, Sweden. During this study it is proved that dynamic scheduling and routing models have lower operational costs, shorter collection and hauling distances, and reduced labor hours compared with static models.



Research Effort	Physical Infrastructure										IoT Technology					Software Analytics					
	Bins Type	Bins Location	Pneumatic Pipes	Fleet of Trucks	Depots	Dumps	Recycling	Processing	RFIDs	Sensors	WSNs	Actuators	Cameras	GPS	Architecture	DSS	GIS	Dynamic Scheduling	Dynamic Routing	Social Context	Experimental Data
[21]	3	1, 2	2	1	2	1	1	2	2		1	2	2	2	2	2	2	2	2	2	1
[22]	1	1	2	1	1	1	2	2	2		1	2	2	2	2	2	2	2	1	2	1
[23]	6	1	2	2	1	1	1	2	2		1, 5	1	2	2	1	1	1	1	1	2	2
[24]	1, 2, 3, 4, 5	1	2	2	2	1	1	1	2		1, 6	2	2	2	2	2	2	1	1	2	2
[25]	1, 3, 4, 5, 6	1	2	1	2	1	1	1	1		1, 2, 3, 4, 5	1	2	2	1	1	2	1	1	1	1
[26]	2, 3, 4, 5	1	2	2	2	2	1	2	2		1, 2, 3, 4, 5	2	2	2	1	1	1	1	2	1	2
[27]	2, 3, 4, 5	1	2	1	2	1	2	2	1		1, 2, 3, 4, 5	1	2	1	1	1	1	1	1	1	2
[28]	1, 2, 3, 4, 5	1	2	1	2	1	2	2	1		1, 2, 3, 4, 5	1	2	2	1	1	1	1	2	1	2
[29]	1, 2, 3, 4	1	2	1	2	1	2	2	2		1, 2, 3, 4, 6	2	2	1	2	2	2	2	2	2	2
[30]	1, 2, 3	1	2	1	2	2	1	1	2		1, 2, 3, 4, 6	1	2	2	1	1	1	2	2	2	1
[31]	1, 2, 3, 4, 5	1	2	1	2	1	2	2	2		1, 2	1	2	1	1	1	1	1	1	1	2
[32]	1, 2, 6	1	2	1	2	1	1	1	2		1, 2	2	2	2	2	2	1	1	1	1	2
[33]	1, 2, 3, 4, 5	1	2	2	2	1	1	1	2		1, 2	2	2	2	2	2	2	1	1	1	2
[34]	1, 2, 3, 4, 5	1	2	2	2	2	2	2	1		1, 2	1	2	2	1	2	2	1	1	1	2
[35]	2, 3, 4, 5, 6	1	2	1	2	2	1	2	2		1, 2	2	2	2	1	1	1	2	2	1	1
[36]	1, 2, 3, 4, 5	1	1	1	2	2	1	1	2		1, 6	2	2	2	2	2	2	1	1	1	1
[37]	1, 2, 3, 4, 5	2	1	1	1	2	2	2	2		1, 6	1	1	2	2	1	2	2	2	2	2
[38]	1, 3, 4, 5	1	2	1	2	1	1	1	1		2	1	2	2	1	2	2	2	2	2	2
[39]	1, 4, 5	1	2	1	2	1	2	1	1		1	2	2	2	1	1	2	1	1	1	2
[40]	1, 2, 3, 4	1	2	1	1	2	1	2	1		1	2	2	1	1	2	1	2	1	2	2
[41]	2	1	2	2	2	2	2	2	1		1	2	2	2	1	2	2	1	1	1	2
[42]	1, 3, 4	1	2	1	2	1	2	2	1		1	1	2	2	2	2	2	2	2	2	2
[43]	2, 3, 4, 5	1	2	1	1	2	1	2	1		1	2	2	2	1	2	1	1	1	2	2
[44]	1, 2, 3, 4, 5	1	2	2	2	2	1	2	2		1	1	1	2	1	1	2	1	1	1	2
[45]	2	1	2	2	2	1	2	2	2		1	1	1	2	2	1	2	1	1	2	1
[46]	2, 3, 4, 5	1	2	1	2	1	1	2	2		1	1	2	2	1	2	2	1	1	2	1
[47]	1, 2, 3, 4, 5	2	2	1	2	1	2	2	2		1	1	2	2	1	2	2	1	1	2	1, 2
[48]	1, 3, 5	1	2	1	2	2	1	2	1		1	2	1	1	1	2	1	1	1	2	2
[49]	1, 3, 4, 5	1	2	1	2	2	1	2	1		1	2	1	1	2	2	2	1	2	1	2
[50]	1, 3, 4, 5	1	2	1	2	1	2	2	1		1	2	1	2	2	2	2	2	1	2	1
[51]	1, 3, 4, 5	1	2	2	1	2	2	2	1		1	2	1	2	1	1	2	2	2	1	2
[52]	1, 2, 3, 4	1	2	1	2	2	1	2	1		1, 5	1	1	2	1	1	1	2	1	1	2

**Legends**

<b>Physical Infrastructure</b>	<b>Bins Type</b>	Organic (1), Glass (2), Paper (3), Plastic (4), Metal (5), Toxic (6)	
	<b>Bins Location</b>	Outdoors (1), Underground (2)	
	<b>Pneumatic Pipes</b>	Incorporated (1), Not Incorporated (2)	
	<b>Fleet of Trucks</b>	Homogenous (1), Heterogeneous (2)	
	<b>Depots</b>	Incorporated (1), Not Incorporated (2)	
	<b>Dumps</b>	Single (1), Multiple (2)	
	<b>Recycling</b>	Supported (1), Not Supported (2)	
	<b>Processing</b>	Supported (1), Not Supported (2)	
	<b>IoT Technology</b>	<b>RFIDs</b>	Incorporated (1), Not Incorporated (2)
		<b>Sensors</b>	Capacity (1), Weight (2), Temperature (3), Humidity (4), Chemical (5), Pressure (6)
<b>WSNs</b>		Defined (1), Implied (2)	
<b>Actuators</b>		Incorporated (1), Not Incorporated (2)	
<b>Cameras</b>		Incorporated (1), Not Incorporated (2)	
<b>GPS</b>		Incorporated (1), Not Incorporated (2)	

The summary of the comparative assessment performed on the survey is presented in Table 2. Thirty two research efforts, in total, are reviewed and their strengths and weaknesses are revealed. Through the provided survey, we try to classify each model according to our taxonomy developed to depict important parts of the proposed systems. Concerning the physical infrastructure, organic bins are used in 22 models, glass bins in 20 models, paper bins in 25 models, plastic bins in 23 models, metal bins in 21 models and toxic bins in 4 models. Waste bins are located outdoors in 28 models while they are underground in 2 models. In just one model, bins are located both outdoors and underground. Pneumatic pipes are incorporated in 2 models; the fleet of trucks is homogenous in 22 models while it is heterogeneous in 9 models. Depots are incorporated in 6 models while they are absent in 25 models. Dumps are single in 18 models while they are multiple in 13 models. Recycling of inorganic waste is supported in 17 models and further processing of organic waste is supported in 8 models. The IoT Technology includes RFIDs (14 models), capacity sensors (30 models), weight sensors (12 models), temperature sensors (5 models), humidity sensors (6 models), chemical sensors (5 models) and pressure sensors (5 models). WSNs are adopted in 14 models and actuators are incorporated in 7 models. Cameras are incorporated in 6 models and GPS is incorporated in 16 models. In the category of software analytics, a DSS is incorporated in 9 models, GIS is discussed in 15 models, dynamic scheduling is defined in 16 models and dynamic routing is defined in 25 models. The social context is supported in 6 models. Synthetic



experimental data are adopted for 7 models while real experimental data are adopted for the evaluation of 19 models. Moreover, 5 models are evaluated on both synthetic and real experimental data.

## **V. CONCLUSION**

A Waste management system using IoT is a step forward to make the manual collection and detection of wastes automated in nature. The currently employing method in which concerned municipal employee has to look for the filled waste bins manually across different spots in an area/street for checking regularly whether the waste bin is filled or not, which is complex and time consuming process. This automation of waste also reduces the human effort and consequently the cost of the whole process.

## **REFERENCES**

1. Bharadwaj B, M Kumudha, Gowri Chandra N, Chaithra G, "Automation Of Smart Waste Management Using Iot Tosupport "Swachh Bharat Abhiyan" – A Practical Approach", IEEE, 2017.
2. Pallavi K N, Dr. Ravi Kumar V, Chaithra B M, "Smart Waste Management using Internet of Things:A Survey", International conference on I-SMAC (IoT in Social, Mobile, Analytics and Cloud), I-SMAC 2017.
3. Dr. N. Sathish Kumar, B.Vijayalakshmi, R. Jenifer Prarthana, A .Shankar, "IOT Based Smart Garbage alert system using Arduino UNO",IEEE, 2016.
4. Ruhin Mary Saji, Drishya Gopakumar, Harish Kumar S, K N Mohammed Sayed, Lakshmi s, "A Survey on Smart Garbage Management in Cities using IoT", International Journal Of Engineering And Computer Science ISSN: 2319-7242, Volume 5 Issue 11 Nov. 2016, Page No. 18749-18754.
5. Nithya.L, Mahesh.M, "A Smart Waste Management and Monitoring System using Automatic Unloading
6. M. Fazio, M. Paone, A. Puliafito, M. Villari, "Heterogeneous sensors become homogenous things in smart cities", Proc. IEEE 6th Int. Conf. Innovative Mobile Internet Services Ubiquitous Comput., pp. 775-780, 2012.
7. C. Balakrishna, "Enabling technologies for smart city services and applications", Proc. IEEE 6th Int. Conf. Next Generation Mobile Appl. Services Technol., pp. 223-227, 2012.
8. S. Suakanto, S. H. Supangkat, Suhardi, R. Sarasgih, "Smart city dashboard for integrating various data of sensor networks", Proc. IEEE Int. Conf. ICT Smart Society, pp. 1-5, 2013.
9. R. Carli, M. Dotoli, R. Pelegriano, L. Ranieri, "Measuring and managing the smartness of cities: A framework for classifying performance indicators", Proc. IEEE Int. Conf. Syst. Man Cybern., pp. 1288-1293, 2013.
10. T. Olivares, F. Royo, A. M. Ortiz, "An experimental Testbed for smart cities applications", Proc. 11th ACM Int. Symp. Mobility Manage. Wirel. Access, pp. 115-118, 2013.



SJIF Scientific Journal Impact Factor

Impact Factor: 8.423



# INTERNATIONAL JOURNAL OF INNOVATIVE RESEARCH

IN SCIENCE | ENGINEERING | TECHNOLOGY

 9940 572 462  6381 907 438  [ijirset@gmail.com](mailto:ijirset@gmail.com)



[www.ijirset.com](http://www.ijirset.com)

Scan to save the contact details