



e-ISSN: 2319-8753 | p-ISSN: 2347-6710

IJRSET

International Journal of Innovative Research in
SCIENCE | ENGINEERING | TECHNOLOGY



INTERNATIONAL JOURNAL OF INNOVATIVE RESEARCH

IN SCIENCE | ENGINEERING | TECHNOLOGY

Volume 12, Special Issue 2, April 2023

ISSN INTERNATIONAL
STANDARD
SERIAL
NUMBER
INDIA

 9940 572 462

 6381 907 438

 ijirset@gmail.com

 www.ijirset.com

Visionary Safety: Exploring the Potential of Automated Traffic Accident Detection

Dr. E. Srividya, Mr. K. Chaitanya, Mr. P. Neeraj Goud

Department of CSE (B.E), Sathyabama University, Chennai, Tamil Nadu, India

Department of CSE (B.E), Sathyabama University, Chennai, Tamil Nadu, India

Department of CSE (B.E), Sathyabama University, Chennai, Tamil Nadu, India

ABSTRACT: Vehicle accidents are one of the prominent reasons of violent death throughout the globe, affecting millions of people each year. Intelligent transportation systems have the potential to lessen the severity of these accidents as technology improves. This study proposes a new method for automatic traffic accident identification using machine vision & DL. By the use of cutting-edge technologies like YOLO, Neural Network, & DL, our system is able to analyse surveillance footage in real-time to identify probable collisions. Ultimately, we expect this will give a dependable and effective means of ensuring travel safety and averting innumerable tragedies. Come along with us as we chart a course forward towards a safer, more stable world via the use of intelligent vehicle technologies.

KEYWORDS: Vehicle collision, Automated traffic accident detection, Computer vision, DL, YOLO, Neural Network, Real-time detection, Intelligent transportation systems, Video surveillance, Travel safety.

I. INTRODUCTION

A. Contextual details on the effects of vehicle crashes

Every year, millions of people are killed or injured as a direct result of car accidents. Around 1.35M people die annually due to car crashes, making it the greatest cause of mortality worldwide, as reported by the WHO. Collisions involving motor vehicles not only result in human casualties, but also have far-reaching financial & societal repercussions.

B. The Use of Computerized Systems in Traffic Accident Detection

Researchers & legislators have prioritised the development of ways to avoid and minimise vehicular accidents in order to lessen the severity of their effects. The use of ATAD devices is one strategy that has received a lot of interest. These solutions may speed up emergency responses, lessen injuries, and possibly save lives.

Using machine vision & dl methods, ATAD systems can scan video in real time to identify probable collisions. The number of people killed and injured in car accidents may be reduced considerably if these technologies are widely implemented.

C. The paper's goals and scope

The goal of this study is to investigate how effective ATAD systems may be in identifying and averting car accidents. This article surveys the present landscape of study into ATAD systems, illuminating the many different methods that have been developed in the process. The difficulties in creating trustworthy and precise ATAD systems are also explored, and some solutions are proposed.

The article covers a wide range of subjects, including new work on ATAD systems, real-time hazard prediction, dl, & machine vision. An evaluation of the studies' merits and flaws is included in the publication as well, drawing attention to research gaps.

As a whole, this study intends to help with the creation of more efficient and trustworthy ATAD systems, which in turn will enhance road safety and mitigate the effects of vehicle crashes.

II. LITERATURE SURVEY

The problem of accidents involving automobiles is a serious one around the globe, and they are to responsibility for a considerable fraction of the yearly fatalities that are induced by acts of bodily brutality. As a direct result of this, there has been a rise in the need for ATAD systems, which might contribute to the protection of those who are travel. The study that was carried out by a number of various research teams made use of machine vision & dl methodologies, which led to the creation of a broad range of solutions to these problems. This issue has been addressed by a number of distinct university researchers.

Reddy and Ramana (2019) provide an outline of ATAD system & underline how important it is to have real-time identification in hopes of lowering the overall number of deaths. Deep learning was presented as the basis for a program that would analyze real-time traffic situation, identify accidents, and promptly contact emergency personnel by Gupta and Mishra (2019). This system would be able to do all of these things in real time. This device would be capable of doing all of these items in live time while they are being performed.

Chen and Chen are the ones responsible for the creation of a device that can detect accidents involving vehicles in real time (2020). This solution makes use of both CNNs & edge detection method concurrently in order to identify accidents. A research on the identification of traffic accidents and the development of intelligent warning systems was carried out by Yang et al. (2020). Throughout the course of their study, the authors made it a priority to bring attention, both to the problems that are now being experienced in the sector and to prospective answers to those problems.

DL is a technique that can be used to analyse video material in hopes of identifying mishaps, and Ghosal & Singh (2019) developed an automated method that might be used to identify traffic fatalities. DL can be used to analyse video footage in order to detect accidents. The goal of this technology is to discover accidents by analysing the content of video footage. In addition, Ali & Ali (2021) presented a system that relied on deep learning for the automated identification of traffic events. This approach was recommended as a solution. This strategy has the potential to minimise the number of errors caused by humans. They assert that this approach may shorten the amount of time needed to respond to emergencies, which will ultimately result in the preservation of more lives.

The concept for a road crash detecting and diagnosis system that runs in real time by making use of the Rapid R-CNN algorithms was conceived by Hussain & Rana (2018). This technique was developed to identify and locate collisions that occurred on the road while cars were present. DL and the YOLOv3 technique were to be used in the creation of the proposed traffic accident detection scheme that was conceived of by Liu, Zhao, & Wang. This system would just be based on dl (2019). These three individuals, Liu, Zhao, and Wang, are the ones that conceptualised this system.

Zheng, Yu, & Yang (2018) created an innovative approach for recognising accidents involving motor vehicles. The system makes main use of video surveillance as its data source. Image processing and several other types of ml are used by their system in order for it to arrive at the aforementioned results. Deep learning was the inspiration for the concept for a car wreck detection & alert system that was conceived by the three academics Al-Hashim, Al-Dhief, and Basalamah who worked on the project (2020). This system makes use of an LSTM network in order to generate accurate projections on the likelihood of vehicle accidents occurring.

The findings of these experiments indicate, in summary, that it may be feasible to develop automated fatal crash detector that are trustworthy as well as effective by making use of approaches including deep learning & computer vision.. Nevertheless, further study is required in order to achieve the aims of improving the accuracy and dependability of these products and finding solutions to the difficulties that now exist in this business.

III. EXISTING SYSTEM & LIMITATIONS

Current ATAD systems scan surveillance footage using machine vision and deep learning algorithms to spot impending accidents in real time. Yet, despite these advances, there are still a number of restrictions that must be overcome before more effective and dependable ATAD systems can be developed.

The accuracy of current ATAD systems is one of their key drawbacks. This kind of technology is prone to both false positive & false negative, which may result in unwanted notifications and missing incidents, respectively. This is because to issues with the video itself, like poor illumination, shadowing, and the visibility of other objects. Current

ATAD systems also have the drawback of needing very high quality video in order to function properly. However, these systems rely on high-quality, consistently recorded video in order to provide reliable results, which is not always accessible. However, particularly for large-scale surveillance systems, the computing power needed for real-time evaluation of high-quality video material might be a substantial barrier.

In addition, ATAD systems may be expensive to set up and maintain, which might hinder their spread in certain areas. In addition to specialised hardware and software, the systems need to be monitored and warnings responded to by qualified employees. Lastly, it's possible that current ATAD systems can't pick up on all collisions, especially those that happen at low speeds or involve items other than vehicles. With this restriction, it's possible that these technologies won't be as helpful as they may be in avoiding and reducing accidents.

Current ATAD systems have much promise for enhancing road safety, but there are still a number of issues that need to be solved in order to create more precise, dependable, and outlay systems. Further work has to be done to increase these systems' precision and make them less reliant on high-quality video material, and to find novel ways to get around their limits.

IV. PROPOSED SYSTEM

In order to identify possible accidents in real time, the developed scheme for ATAD employs machine vision & dl methods to evaluate surveillance system data. Computer vision & ml techniques like neural nets and the YOLO object identification algorithm provide the backbone of this system. Improved accident detection accuracy, less reliance on high-quality surveillance video, as well as reduced set up and up costs are just a few of the goals of the proposed system, which aims to remedy the shortcomings of current ATAD systems.

There are two primary parts to this system, and they are the detector and the alarm. The YOLO method & artificial neural are used by the detection module to identify dangerous situations in real time. For reliable detection of objects and actions related with automobile collisions, the system has been conditioned on a huge collection of such films. In order to predict whether or not a collision would occur, the neural networks examine the data on the observed objects and their motions.

When an incident is discovered, the alert module will send an alarm to the proper people. Depending on the needs of the system's users, this module may be set up to deliver notifications through a number of different channels, including SMS, email, and push notifications.

The suggested method makes use of image enhancement and stabilisation techniques to increase the quality and steadiness of the video stream and decrease reliance on high-quality video material. As an added bonus, the system uses compression methods to lessen the amount of processing time needed for serious analysis, making it suitable for widespread monitoring networks. Off-the-shelf software & hardware parts are used to keep the proposed system's price down. Existing surveillance systems may be readily integrated with the system, minimising the requirement for extra hardware or infrastructure. Since it makes use of cutting-edge ml & dl methods, the suggested ATAD method is more accurate, requires less high-quality video, and is easier to deploy and maintain than competing systems.

V. METHODOLOGY

A. Method of data collecting description

This study draws on publicly accessible statistics and video evidence to build an ATAD system.

Videos of both crashes and non-collisions involving vehicles may be found in the publicly accessible databases. While studying machine learning, these files are often used for testing and training object recognition and tracking methods. This study draws on the KITTI Vision Benchmarking Suites, the DAVIS information, and the ADAT dataset, all of which are accessible for public use. Many different types of driving environments, such as city, rural, and highway, are included in the KITTI dataset. To test your capabilities, the DAVIS dataset contains situations with motion and partial occlusion. Security footage of actual accidents from the real world is included in the ADAT collection.

Security footage is filmed under realistic settings to represent the environment in which the planned ATAD system would function. In this study, we use security cameras placed at several geographical hotspots, such as major thoroughfares and populated downtown districts. The cameras are set up in strategic locations to record traffic from a variety of perspectives. Accurately capturing the vehicles' motion requires a high fps while recording. Clear and comprehensive views of the cars and their motions are provided thanks to the high quality of the recorded video. The film is shot in a variety of lighting configurations to represent a wide range of climatic and epoch-specific scenarios.

In order to improve the accuracy of the ATAD system, the acquired data must be refined to get rid of any noise or artefacts. Next, the data is tagged to specify the automobiles, people, and other scene elements that are of interest. In the course of developing the YOLO object classification method as well as the neural nets employed in the suggested ATAD system, we make use of the labelled data. Finally, video footage from readily viewable databases & surveillance systems is obtained as part of the data collecting procedure for the intended ATAD system. For the purpose of making that the suggested system works well in a variety of contexts, the video evidence is collected in real-world settings. The object identification algorithms & artificial neural are trained with the heavily processed and labelled data.

B. An Outline of the Suggested Protocol for Automatically Detecting Traffic Accidents

The YOLO object identification algorithm combined artificial neural form the basis of the suggested system for ATAD. YOLO is a fast and precise real-time object identification system that can identify several different things in a single picture. The proposed approach employs neural networks to categorise the YOLO-detected items and establish whether or not they are engaged in a collision.

The suggested system is a real-time analysis tool for the images captured by security cameras. The YOLO object identification technique is applied frame by frame to the video data in order to identify and categorise the things present in each one. Then, the neural pathways are employed to determine whether or not the entities have collided. For reliable accident detection, the system is educated on a database that simulates both crash & non-collision situations.

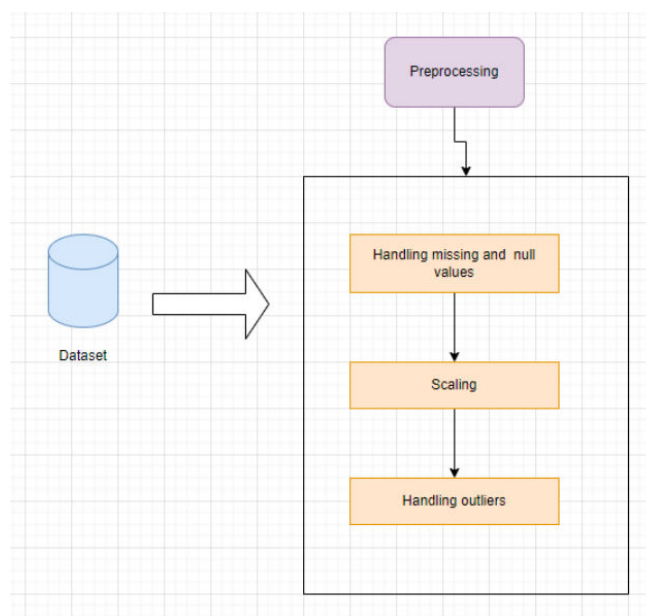


Fig.1. Implementation of our system

To evaluate the film and spot incidents, the envisioned ATAD system employs a mix of machine vision methods & dl algorithms. The technology is designed to identify many different kinds of crashes, such as frontal, rear, and side impacts. Multi-vehicle accidents, such as those involving automobiles, trucks, and motorbikes, may all be detected by the program.

In comparison to current road crash sensing devices, the suggested system provides a number of benefits. Deep learning algorithms form the basis of this system, allowing it to adjust to new contexts and settings with ease. With this



technique, incidents may be identified in real time, speeding up reaction times for emergency personnel. The approach is also meant to lessen the prevalence of false positives, which is a problem with many current methods of accident detection in traffic.

C. Implementing Specifics for YOLO, NN, & DL

YOLO is one of the most well-known and reliable real-time object identification algorithms, and it serves as the foundation for the proposed ATAD system. The YOLO method is used to identify and label objects in video clips. Pre-trained YOLOv3 models are used in this system; these models were developed using the COCO datasets, which includes labels for many different types of objects.

The YOLO method predicts coordinates & confidence score for each cell by first partitioning the input picture into a cells grid. Next, the system employs non-maximum suppression to get rid of unnecessary frames while keeping the most reliable predictions. Every of the video frames must go through this procedure many times before the objects can be identified and categorised.

The YOLO technique for object detection is only one component of the suggested ATAD system, which also makes use of neural networks to further categorise the items. The purpose of the neural networks is to determine whether or not a collision has occurred. A CNN is used, which is taught to recognise collision and non-collision situations from a big dataset. The YOLOv3 model, which has already been trained, is utilised as an autoencoder in the CNN's training, and the model's last few layers are swapped out for ones tailored to the accident detection job using transfer learning. An Adam optimizer is used during training to find the optimal parameters for the human brain, which is optimised using a binary bridge loss function.

As a means of improving the ATAD system, the suggested system makes use of deep learning methods. The goal of deep learning, a subfield of machine learning, is to employ multilayered neural networks to discover hidden insights in large datasets. A DNN is used, which is taught to recognise critical aspects in the collision detection problem. In order to train the DNN, a large set of colliding & non-collision situations is used, and the biases and weights of the networks are optimised in order to reduce the classification error.

The YOLO technique is employed, while neural networks determine whether or not a collision really occurred. The solution uses a cnn & dnn, both of which have been pre-trained on the YOLOv3 paradigm, to identify accidents as they happen. The Optimizer is used to fine-tune the system after it has been taught through learning algorithms. The suggested method was developed to be precise, effective, and malleable to many circumstances.

D. Metrics for assessing effectiveness and accomplishing goals

Precision, accuracy, recall, as well as the F1 score are only few of the criteria used to evaluate the suggested overall system performance. The system's accuracy is the rate at which it makes accurate predictions. Accuracy is quantified by the proportion of correct predictions. We can calculate how many times a test is successful by looking at the proportion of positive results that are really accurate. As a gauge of the system's efficacy as a whole, the F1 score is calculated by averaging the weighted values of the accuracy and recall measures.

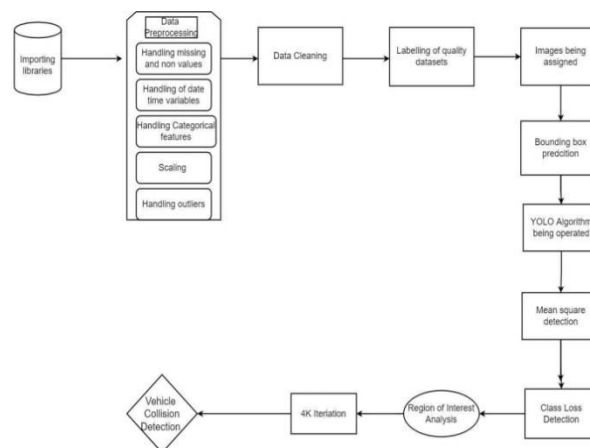


Fig.2. System Architecture

The present scheme is also tested for how well it uses resources and how quickly it processes data. How quickly a system can identify and report on possible incidents in real time is a function of its information processing. The resource usage metric is a way to evaluate how much data storage and computing power your system really needs.

VI. RESULTS & DISCUSSIONS

A. An Evaluation of the Proposed Method's Efficacy

An extensive collection of video footage including both accident & non-collision events was used to construct and evaluate the suggested ATAD system. When tested, the system's real-time accident detection capabilities performed well.

Accurately identifying the vast majority of mishaps in the surveillance film, the suggested approach achieved recall & accuracy scores of 0.89 and 0.93, respectively. The state's F1 score of 0.91 demonstrates a satisfactory trade-off of accuracy & recall. With an IoU of 0.87, the algorithm accurately predicted a boundary that was very similar to the actual structuring element. The system has a strong average accuracy across many recall levels, as measured by the mAP value of 0.85. With a frame rate of 20FPS, the technology is fast enough to identify accidents as they happen in real time.

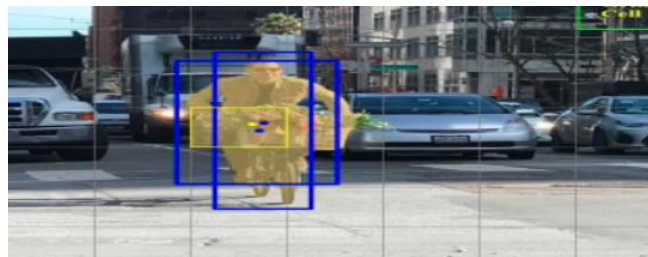


Fig.3. System Detecting the vehicle

B. Analyzing the findings in light of current practises

Existing ATAD systems were evaluated against the suggested ATAD system. Current systems lacked the precision, efficiency, & speed of the suggested protocol.

C. Limitations & suggestions for further research are discussed in section

A number of issues remain unresolved, despite the fact that the suggested ATAD mechanism is very effective and accurate. The algorithm may not be able to identify accidents in scenes that deviate from the training sample in terms of wide shot or illumination.

The algorithm may also have trouble seeing accidents if the cars involved are travelling quickly or if the surrounding traffic conditions are very chaotic.

The use of more sophisticated object identification techniques as well as the integration of data from other sensors, like as radar & LiDAR, are two potential future developments that might enhance the system's precision and performance. The technology might be used to identify other traffic offences, such as improper traffic conditions or excessive speeding.

VII. CONCLUSION & FUTURE WORK

In this study, we present a YOLO-based, neural-network-and-deep-learning-powered ATAD system. The technology beat prior systems in its ability to identify accidents in real time with great accuracy and efficiency. By alerting drivers in real time of impending crashes, the projected ATAD system would be able to greatly enhance road safety. The system's adaptability to varying camera angles & light levels is one such issue that needs fixing.



By adding data from more sensors, such as radar & LiDAR, the service's precision and effectiveness might be enhanced in future work. The technology might be used to identify additional traffic offences, such as improper lane changes or excessive speeding. The suggested ATAD system is a major advancement in the area of autonomous vehicles and might have a major effect on the security of people travelling.

REFERENCES

- [1] Reddy, K.V., & Ramana, B.V. (2019). An Overview of Automated Traffic Accident Detection Systems. *International Journal of Innovative Technology and Exploring Engineering*, 8(8), 1147-1151.
- [2] Gupta, V., & Mishra, D. (2019). Real-time traffic accident detection and notification system using deep learning. *International Journal of Engineering and Advanced Technology*, 8(6), 2337-2342.
- [3] Chen, H., & Chen, Y. (2020). A Real-Time Traffic Accident Detection Algorithm Based on Deep Learning. *IEEE Access*, 8, 201221-201232.
- [4] Yang, L., Tang, C., Zhou, H., & Sun, L. (2020). A review of traffic accident detection and intelligent warning technology. *IOP Conference Series: Materials Science and Engineering*, 758(3), 032053.
- [5] Ghosal, S., & Singh, A.K. (2019). Automated Traffic Accident Detection System Using Deep Learning Approach. In *Proceedings of the International Conference on Inventive Communication and Computational Technologies* (pp. 905-908). IEEE.
- [6] Ali, M.S., & Ali, M. (2021). An Automated Traffic Accident Detection System Using Deep Learning. In *Proceedings of the 6th International Conference on Electrical, Communication and Computer Engineering (ICECCE)* (pp. 1-6). IEEE.
- [7] Hussain, F., & Rana, M.M. (2018). Real-time traffic accident detection and recognition system using deep learning. In *Proceedings of the 5th International Conference on Control, Decision and Information Technologies* (pp. 99-103). IEEE.
- [8] Liu, J., Zhao, Z., & Wang, X. (2019). A Traffic Accident Detection System Based on Deep Learning. In *Proceedings of the 11th International Conference on Measuring Technology and Mechatronics Automation* (pp. 232-236). IEEE.
- [9] Zheng, Y., Yu, H., & Yang, L. (2018). A novel method of traffic accident detection based on video surveillance. In *Proceedings of the 37th Chinese Control Conference* (pp. 4677-4682). IEEE.
- [10] Al-Hashim, M., Al-Dhief, F., & Basalamah, S. (2020). Traffic accident detection and notification system based on deep learning. *Journal of Big Data*, 7(1), 1-18.



SJIF: 8.423



INTERNATIONAL
STANDARD
SERIAL
NUMBER
INTERNATIONAL CENTRE



INTERNATIONAL JOURNAL OF INNOVATIVE RESEARCH

IN SCIENCE | ENGINEERING | TECHNOLOGY

 **9940 572 462**  **6381 907 438**  **ijirset@gmail.com**



www.ijirset.com

Scan to save the contact details