



e-ISSN: 2319-8753 | p-ISSN: 2347-6710

IJIRSET

International Journal of Innovative Research in
SCIENCE | ENGINEERING | TECHNOLOGY



INTERNATIONAL JOURNAL OF INNOVATIVE RESEARCH

IN SCIENCE | ENGINEERING | TECHNOLOGY

Volume 12, Special Issue 1, April 2023

ISSN INTERNATIONAL
STANDARD
SERIAL
NUMBER
INDIA



9940 572 462



6381 907 438



ijirset@gmail.com



www.ijirset.com

Automated Screening System for Acute Myelogenous Leukemia Detection

Mr.K.RAJESHKUMAR¹, C.USHA², D.VARSHINI³, T.VIJAYALAKSHMI⁴, V.YAZHINI⁵

Associate Professor, Department of Electronics and Communication Engineering, Adhiyamaan College of Engineering,
Krishnagiri, Tamil Nadu, India¹

UG Students, Department of Electronics and Communication Engineering, Adhiyamaan College of Engineering,
Krishnagiri, Tamil Nadu, India^{2,3,4,5}

ABSTRACT: Acute myelogenous leukemia (AML) is a subtype of acute leukemia, which is current among overgrown-ups. The average age of a person with AML is 65 times. The need for automation of leukemia discovery arises since current styles involve manual examination of the blood smear as the first step toward opinion. This is time-consuming, and its delicacy depends on the motorist's capability. In this paper, a simple fashion that automatically detects and corridor AML in blood smears is presented. The proposed system differs from others in 1) the simplicity of the developed approach; 2) type of complete blood smear images as opposed to subimages; and 3) use of these algorithms to member and descry nucleated cells. Computer simulation involved the following tests comparing the impact of Hausdorff dimension on the system before and after the influence of original double pattern, comparing the performance of the proposed algorithms on subimages and whole images, and comparing the results of some of the being systems with the proposed system. Eighty bitty blood images were tested, and the proposed frame managed to gain 98 delicacy for the localization of the lymphoblast cells and to separate it from the subimages and complete images.

KEYWORDS: Acute Myelogenous Leukemia (AML), bracket, point birth, segmentation

I.INTRODUCTION

WHITE blood cells (WBCs) or leukocytes play a major part in the opinion of different conditions; as a result, lodging information about them is precious for hematologists(50). The term leukemia comes from the Greek word " leukos " meaning " white " and " end " meaning " blood. " It refers to the cancer of the blood or the bone gist(where blood cells are produced). Diagnosing leukemia is predicated on the fact that white cell count is increased with immature blast cells(lymphoid or myeloid), and neutrophils and platelets are dropped(41). therefore, hematologists routinely examine blood smear under microscope for proper identification and type of blast cells (40). The presence of the spare number of blast cells in supplemental blood is a significant symptom of leukemia. Leukemia is vastly classified as 1) acute leukemia (which progresses snappily); and 2) habitual leukemia(which progresses slowly)(11). Acute myelogenous leukemia (AML) is a eclectic clonal complaint of haemopoietic ancestor cells(" blasts "), which lose the capability to separate generally and to respond to normal regulators of proliferation. This loss leads to fatal infection, bleeding, or organ infiltration, generally, in the absence of treatment, within a time of opinion. AML is vindicated when the gist contains further than 30 blasts. In this paper, only AML is considered. AML is a fast- growing cancer of the blood and bone gist. It's fatal if left undressed, due to its rapid-fire- fire spread into the bloodstream and other vital organs(1).

II.OBJECTIVE

The system proposed ensures step- by- step processing. Fig. 2 depicts the system overview. The system overview gives a detailed definition of the sequence of way that are to be followed for effective bracket of acute

leukemia. The first step involves preprocessing the complete images to overcome any background nonuniformity due to irregular illumination. Preprocessing also includes color correlation where RGB images are converted to $L * a * b$ color space images. This step ensures perceptual uniformity. This step is followed by k- means clustering to bring out the nexus of each cell. Segmentation is followed by point birth grounded on which bracket and confirmation are performed.

III.EXISTING METHOD

Two new features, analogous as cell energy and Hausdorff dimension(HD), have been used. The result is also compared with the results of the being models. The LBP system has proved to outperform multitudinous being styles, including the direct discriminant analysis and the topelement analysis. The system presented not only enables type of whole images but also presents a better performance for subimages when compared with some of the being systems. A set of four being systems that employ the same color correlation, segmentation, and type ways as the proposed system were taken into consideration. Automatic Leukemia or blood cancer discovery is a challenging job and is truly important demanded in healthcare centers. It has a significant part in early opinion and treatment planning. Leukemia is a hematological complaint that starts from the bone gist and affects white blood cells(WBCs). bitty analysis of WBCs is a favored approach for an early discovery of Leukemia since it's cost-effective and less painful. truly numerous literature reviews have been done to demonstrate a comprehensive analysis of deep and machine knowledge- predicated Acute Lymphoblastic Leukemia(all) discovery. This composition presents a regular review of the recent advancements in this knowledge sphere.

IV.PROPOSED SYSTEM

This composition presents a brief analysis of recent advancements in deep and machine knowledge- predicated discovery and type of ALL. We have analyzed various being styles of segmentation, point birth, and type, which are employed to descry ALL efficiently. From this review, we also observed that among classical machine learning schemes, unsupervised schemes are preferred for segmentation tasks, whereas supervised schemes are preferred for type tasks. More advanced deep knowledge or transfer knowledge- predicated systems can be designed by modifying the being effective models to make the system more accurate and hastily as well. Acute myeloid leukemia(also called AML) is a cancer of the blood and bone gist cells. It affects a group of white blood cells called myeloid cells because they are formed in the bone gist." Acute" means that it develops and advances snappily, and requires immediate treatment.

V .BLOCK DIAGRAM

a) Image Processing

Treatment of ALL is generally critical and needs to be given within days, and sometimes the same day, as the opinion is made. The first phase of treatment, called induction chemotherapy, requires that cases remain in the sanatorium for roughly four weeks. The most common drugs used for induction treatment of ALL are daunorubicin, vincristine, prednisone, asparaginase and sometimes cyclophosphamide. ferocious supportive care accompanies the chemotherapy, including transfusion of red blood cells and platelets.

b) Pre Processing

Connection chemotherapy generally includes multiple cycles of ferocious chemotherapy given over a six- to nine- month period. Frequent hospitalizations are demanded and ferocious supportive care is still demanded, including red blood cell and platelet transfusions. Stem cell transplantation is not generally performed to treat ALL unless abnormal cytogenetics are present. Chemotherapy agents used during connection include the same agents used during induction, as well as Ara- C, etoposide, methotrexate and 6- mercaptopurine.

c) Segmentation

ALL constantly can recur in the spinal fluid, the fluid that bathes the spinal column and brain. To help fall at this position, chemotherapy must be fitted directly into the fluid that bathes the spinal column. This is done by fitting a needle between the backbones of the lower rear — called a spinal stopcock or lumbar perforation — and investing chemotherapy directly into the clear spinal fluid.

d) Classifier

Up to one- quarter of grown- ups with ALL have the " Philadelphia chromosome" in their leukemia cells, which confers a poor prognostic. There are several FDA- approved drugs available to analogous cases, including imatinib(Gleevec) and dasatinib(Sprycel). Cases begin taking them during induction chemotherapy and continue indefinitely. analogous ALL cases are generally given an allogeneic bone gist transplant as their swish chance of cure. ALL cases are prone to viral infections and to a pneumonia called pneumocystis during their treatment.

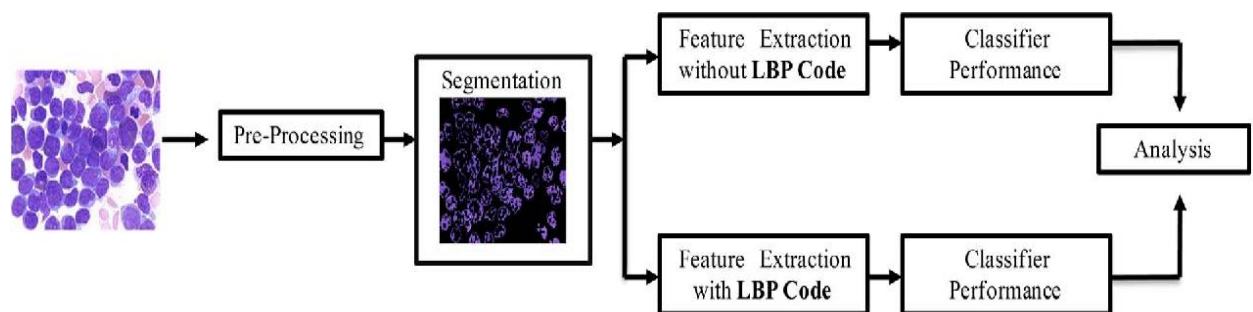


Fig 1. Block diagram

VI. DATA FLOW DIAGRAM

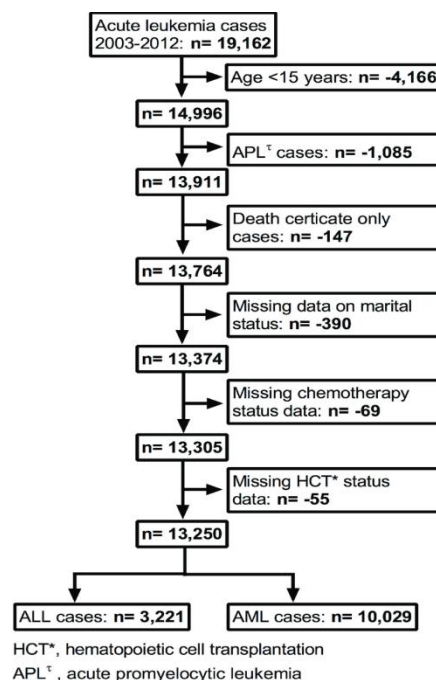


Fig 2: Data flow diagram

6.1 SOLUTION & TECHNICAL ARCHITECTURE:-

Multiple mechanisms contribute to the dysfunction of effector T cells in AML, including 1) wide range expression of leukemia antigens; 2) the capability of AML cells to lose antigen/ MHC expression limiting effective T cell response; 3) expression of negative costimulatory ligands by leukaemic cells; 4) expansion of non-supervisory T cells (Tregs) and myeloid derived suppressor cells (MDSC); and 5) deletion of supplemental T cell co-receptors (60 – 62).

Recent attention has concentrated on blocking negative non-supervisory signals in order to spark T cell-mediated anti-tumor immunity (Table 2). CTLA-4 and PD-1, members of CD28 family, are the crucial inhibitory receptors that limit T cell activation. CTLA-4 is expressed on activated T cells and Tregs and binds CD80/ CD86 ligands on antigen presenting cells (APCs). On effector T cells, CTLA-4 is suitable to outcompete CD28 for access to the vulnerable synapse, thereby limiting co-stimulation (61, 63). The anti-CTLA-4 inhibitory mAb Ipilimumab was approved by FDA after clinical studies in advanced carcinoma demonstrated remarkable exertion (64). CTLA-4 ligand by mAb enhances AML specific T cell responses in vitro (65), and CTLA-4 polymorphism has been associated with AML relapse (66).

Other blood diseases

Other blood diseases, particularly myelodysplastic pattern (MDS) and lower generally myeloproliferative tumors (MPN), can evolve into AML the exact threat depends on the type of MDS/MPN. The presence of asymptomatic clonal hematopoiesis also raises the threat of metamorphosis into AML.

Chemical exposure

Exposure to anticancer chemotherapy, in particular alkylating agents, can increase the threat of latterly developing AML. Other chemotherapy agents, including fludarabine, and topoisomerase II impediments are also associated with the development of AML; most generally after 4 – 6 times and 1 – 3 times respectively. These are frequently associated with specific chromosomal abnormalities in the leukemic cells. Other chemical exposures associated with the development of AML include benzene, chloramphenicol and phenylbutazone.

Radiation

High quantities of ionizing radiation exposure, similar as that used for radiotherapy used to treat some forms of cancer, can increase the threat of AML. People treated with ionizing radiation after treatment for prostate cancer, non-Hodgkin carcinoma, lung cancer, and bone cancer have the loftiest chance of acquiring AML, but this increased threat returns to the background threat observed in the general population after 12 times. Historically, survivors of the infinitesimal bombings of Hiroshima and Nagasaki had an increased rate of AML, as did radiologists exposed to high situations of X-rays previous to the relinquishment of ultramodern radiation safety practices.

Genetics

Utmost cases of AML arise spontaneously, still there are some inheritable mutations associated with an increased risk. Several natural conditions increase the threat of leukemia; the most common is Down pattern, with other further rare conditions including Fanconi anemia, Bloom pattern and ataxia-telangiectasia (all characterised by problems with DNA form), and Kostmann pattern.

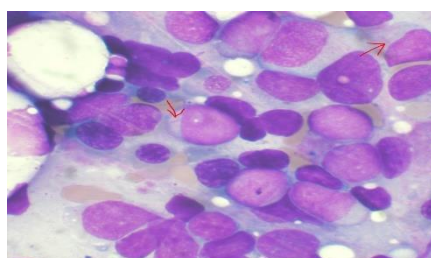


Fig.3 AML DISORDER

VII .SOFTWARE REQUIRED

- Operating System : Windows 10
- Platform : python

7.1 PyCharm-

PyCharm IDE is primarily used in web and operation development using Python. It helps programmers develop operations efficiently in lower time.

1. Community interpretation

This interpretation is free and can fluently be downloaded and installed in our system.

2. Professional interpretation

This interpretation consists of advanced features for operation development. It provides a trial interpretation for a many days. After the free trial, we've to pay for the activation of this Professional interpretation.

STONER ACCEPTANCE TESTING-

PyCharm makes it easier for programmers to write colorful web operations in Python supporting extensively used web technologies like HTML, CSS, JavaScript, TypeScript and CoffeeScript. The web inventors can use the live editing exercise option handed by the IDE to view a single web runner contemporaneously in the editor and cybersurfer. At the same time, the live edit point handed by the IDE enables programmers to see the changes made to the law presently on a web cybersurfer. PyCharm further allows inventors to mileage a JavaScript debugger as well.

VIII. RESULT

Perpetration is the stage of the design when the theoretical design is turned into a working system. This is the final and important phase in the system life cycle. It's actually the process of converting the new system into a functional bone. Unit testing comprises the set of tests performed by an individual programmer previous to integration of the unit into a larger system. The module interface is tested to insure that information duly flows into and out of the program unit. The original data structure is examined to insure that data stored temporarily maintains its integrity during all way in an algorithm's prosecution. Boundary conditions are tested to insure that the module operates duly at boundaries established to limit or circumscribe processing. All independent paths through the control structure are tested. All error- handling paths are tested.

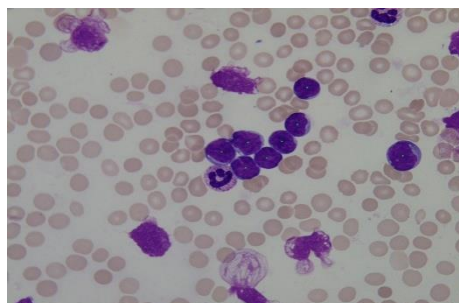


Fig.4 LEUKEMIA

IX .CONCLUSION

This paper has reported the design, development, and evaluation of an automated webbing system for AML in blood bitsy images. It uses 80 high- quality 184 × 138 size images attained from the American Society of Haematology(32). The presented system performs automated processing, including colour correlation, segmentation of

the nucleated cells, and effective confirmation and bracket. A point set exploiting the shape, colour, and texture parameters of a cell is constructed to gain all the information needed to perform effective bracket. The impact of the LBP driver on the HD proved to be a promising point for this analysis. likewise, a color point called cell energy was introduced, and results show that this point presents a good discrimination between cancer and noncancer cells. farther exploration will concentrate on collection of further samples to yield better performance and erecting an overall system for cancer bracket.

REFERENCES

- [1] F. Scotti, "Automatic morphological analysis for acute leukemia identification in peripheral blood microscope images," in Proc. CIMSA, 2005, pp. 96–101.
- [2] V. Piuri and F. Scotti, "Morphological classification of blood leucocytes by microscope images," in Proc. CIMSA, 2004, pp. 103–108.
- [3] M. Subrajeet, D. Patra, and S. Satpathy, "Automated leukemia detection in blood microscopic images using statistical texture analysis," in Proc. Int. Conf. Commun., Comput. Security, 2011, pp. 184–187.
- [4] H. Ramoser, V. Laurain, H. Bischof, and R. Ecker, "Leukocyte segmentation and classification in blood-smear images," in Proc. IEEE EMBS, 2006, pp. 3371–3374.
- [5] C. Reta, L. Altamirano, J. A. Gonzalez, R. Diaz, and J. S. Guichard, "Segmentation of bone marrow cell images for morphological classification of acute leukemia," in Proc. 23rd FLAIRS, 2010, pp. 86–91.
- [6] G. Ongun, U. Halici, K. Leblebicioglu, V. Atalay, M. Beksac, and S. Beksac, "Feature extraction and classification of blood cells for an automated differential blood count system," in Proc. IJCNN, 2001, vol. 4, pp. 2461–2466.
- [7] S. Mohapatra and D. Patra, "Automated leukemia detection using hausdorff dimension in blood microscopic images," in Proc. Int. Conf. Emerg. Trends Robot Commun. Technol., 2010, pp. 64–68.
- [8] S. Mohapatra, S. Samanta, D. Patra, and S. Satpathi, "Fuzzy based blood image segmentation for automated leukemia detection," in Proc. ICDeCom, 2011, pp. 1–5.
- [9] S. Mohapatra, D. Patra, and S. Satpathi, "Image analysis of blood microscopic images for acute leukemia detection," in Proc. IECR, 2010, pp. 215–219.
- [10] S. Mohapatra, D. Patra, and S. Satpathi, "Automated cell nucleus segmentation and acute leukemia detection in blood microscopic images," in Proc. ICSMB, 2010, pp. 49–54.

BIOGRAPHY



Mr K. Rajesh kumar,
Associate Professor,
Electronics and Communication
Engineering Department,
Adhiyamaan College of Engineering,



C.Usha,
Bachelor of Engineering (student), Adhiyamaan College of Engineering



D.Varshini,
Bachelor of Engineering(student), Adhiyamaan College of Engineering

International Journal of Innovative Research in Science, Engineering and Technology

An ISO 3297: 2007 Certified Organization

Volume 12, Special Issue 1, April 2023

10th National Conference on Frontiers in Communication and Signal Processing Systems (NCFCSPPS '23)

5th -6th April 2023

Organized by

Department of ECE, Adhiyamaan College of Engineering, Hosur, Tamilnadu, India



T.Vijayalakshmi,
Bachelor of Engineering(student), Adhiyamaan College of Engineering



V.Yazhini,
Bachelor of Engineering(student), Adhiyamaan College of Engineering



SJIF: 8.423



INTERNATIONAL
STANDARD
SERIAL
NUMBER
INTERNATIONAL CENTRE



INTERNATIONAL JOURNAL OF INNOVATIVE RESEARCH

IN SCIENCE | ENGINEERING | TECHNOLOGY

 **9940 572 462**  **6381 907 438**  **ijirset@gmail.com**



www.ijirset.com

Scan to save the contact details