



e-ISSN: 2319-8753 | p-ISSN: 2347-6710

# IJIRSET

International Journal of Innovative Research in  
**SCIENCE | ENGINEERING | TECHNOLOGY**



# INTERNATIONAL JOURNAL OF INNOVATIVE RESEARCH

IN SCIENCE | ENGINEERING | TECHNOLOGY

Volume 12, Special Issue 1, April 2023

**ISSN** INTERNATIONAL  
STANDARD  
SERIAL  
NUMBER  
INDIA

# Classification of Lung Sounds Using Convolution Neural Networks

Mr.M.Venkatasen<sup>1</sup>, Aarthi T<sup>2</sup>, Akshara Sree J B<sup>3</sup>, Buvaneshwari U<sup>4</sup>, Devi V<sup>5</sup>

Associate Professor, Department of Electronics and Communication Engineering, Adhiyamaan College of Engineering,  
Krishnagiri, Tamil Nadu, India <sup>1</sup>

UG Students, Department of Electronics and Communication Engineering, Adhiyamaan College of Engineering,  
Krishnagiri, Tamil Nadu, India <sup>2,3,4,5</sup>

**ABSTRACT:** Respiratory sound analysis represents a studies topic today's growing hobby in recent times. In fact, in this vicinity, there's the potential to routinely infer the abnormalities inside the preliminary ranges ultra-modern a lung disorder. techniques: on this paper, we advise a way to analyse breathing sounds in an automatic manner. The goal is to expose the effectiveness cutting-edge device latest techniques in respiration sound evaluation. A feature vector is amassed at once from breath audio and, therefore, with the aid of exploiting supervised system getting to know modern strategies, we locate if the feature vector is associated with a affected person laid low with a lung ailment. furthermore, the proposed approach is able to characterize the lung disorder in allergies, bronchiectasis, bronchiolitis, chronic obstructive pulmonary sickness, pneumonia, and lower or upper respiration tract contamination. results: A retrospective experimental evaluation on 126 sufferers with 920 recording sessions confirmed the effectiveness ultra-modern the proposed approach. end: The experimental analysis demonstrated that it is viable to detect lung ailment by way of exploiting system today's techniques. We taken into consideration several supervised device cutting-edge algorithms, acquiring the maximum exciting overall performance with the neural community model, with an F-degree state-of-the-art 0.983 in lung sickness detection and identical to zero.923 in lung sickness characterisation, growing the overall performance

**KEYWORDS:-** neural network, lung, machine learning, classification

## I.INTRODUCTION

Respiration sounds in this context can represent important indicators of fitness from a respiratory factor of view. In fact, sounds generated while a affected person is breathing are at once associated with the movement of air, which can truly vary in keeping with lung tissue and secretions [6]. Assuming that respiratory varies in keeping with the health of the lungs, it can be feasible to mechanically perceive a lung ailment by using analysing the breath sounds gathered from a stethoscope. For these motives, we layout an method to mechanically discover lung diseases via analysing respiration sounds. We advise a -step supervised machine gaining knowledge of method able to (i) stumble on whether audio gathered from virtual stethoscopes is associated with a healthful affected person or a affected person bothered via a (regularly occurring) lung sickness and to (ii) recognise the unique lung ailment. We test with numerous supervised gadget getting to know algorithms, locating the nice one for detecting breathing sound troubles. The aim is to expose that device gaining knowledge of techniques can be successfully hired for the detection of lung pathologies in an automated

and non-invasive manner. As a rely of reality, with a view to generate the prediction from the proposed approach, we only require the audio registration from the digital stethoscope for the patient, without any invasive exam. for this reason, the proposed approach can be taken into consideration also for fast screening. We itemize the distinctive factors introduced in the manuscript below:

- a two-step method composed of a classifier is proposed: the primary one objectives to discriminate among healthy sufferers and sufferers laid low with a prevalent lung sickness, whilst the second version is dedicated to detecting the unique lung disease;

- we take advantage of a function vector directly acquired from respiration sounds, which, to the first-class of the authors' know-how, has never been previously considered;
- inside the experimental evaluation, we use datasets, acquired from real-global patients, composed of respiration sounds, accumulated and labelled from two extraordinary institutions (the primary one in Portugal and the second one in Greece);
- for conclusion validity, we examine the effectiveness of the taken into consideration feature vector with unique supervised machine studying strategies, with the aid of showing that device learning can be beneficial in the computerized detection of lung diseases;

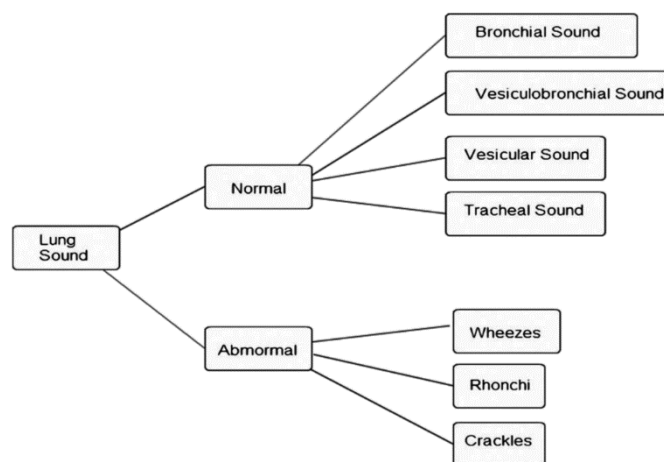


Fig 1. Lung sound classification

## II. RELATED WORKS

### 1.Design and Implementation for a Lung Sound System

It makes use of a condenser microphone with an amplifier, band-skip filter out circuit, and shift circuit, and a microprocessor to perform the analog-to-digital conversion. data are transmitted through a RS232 port to a pc and the sound is performed returned through audio system. The software LabVIEW changed into used to broaden a consumer interface to display the lung sound diagrams to offer a prognosis reference for junior physicians. every other take a look at proposed the usage of laptop software program to set up wavelet alterations for eigenvalue computation and to pick out bizarre breath sounds through an artificial neural community (ANN)

### 2.A Digital Electronic Stethoscope Based on an Audio Player

It installed a machine that could routinely choose applicable signs, and its user interface should show the cutting-edge nation of the lung to determine the ordinary lung sounds and signs and symptoms. any other report proposed a digital electronic stethoscope, based at the commercially to be had digital Walkman

### 3. performance assessment and enhancement of lung sound popularity system in real noisy environments

An embedded condenser microphone & amplifying and filtering circuits to keep a digital lung sound signal. on this machine, methods of analysis such as fast Fourier remodel (FFT) and strength spectral density had been used to hit upon wheeze indicators. some other examine proposed using mel-frequency cepstral coefficients (MFCCs) to capture lung sound traits, after which using dynamic time warping to divide the lung sounds into normal sounds, wheezes, and crackles

### 4.Discrimination between healthy subjects and patients with pulmonary emphysema by detection of abnormal respiration

By using improving lung sound signals, a twin-sensor spectral subtraction algorithm become used to lessen interfering noise in lung sound identity while capturing the characteristics of lung sound alerts on this machine. some other look at

proposed the use of hidden Markov fashions to establish characteristic fashions of the collected lung sounds of emphysema patients and normal lung sounds

#### 5.A Feasibility Study of Lung Sound Auscultation Systems

Lung sounds have been broadly studied. One document proposed the use of a pc as a device for acquisition and analysis, and establishing a user interface for physicians as a diagnostic device. This hardware used a microphone circuit to experience lung sounds, and a breathing phase detection circuit detected the breathing state the usage of a thermistor to sense changes in nasal air temperature. The indicators were captured via a laptop sound card and recorded in the computer.

### III.EXISTING METHOD

We aim to improve in this invention with the aid of studying audio information with gadget gaining knowledge of algorithms and via classifying respiratory sounds. Our information includes audio recordings of lung sounds that had been recorded by chest physicians. We consider, using machine mastering, audio facts can be analyzed for styles in an effort to cause the detection of various pathological lung sounds and help inside the analysis of respiratory conditions

### IV.PROPOSED SYSTEM

The proposed method based on artificial Noise Addition approach (ANA) is used to decorate the functions of ARS and facilitates in feature extraction through feature maps. furthermore, “ANA” useful resource in differentiating the subclasses of ordinary/adventitious sounds more correctly. As a way as we categorized ARS the use of “ANA” phenomena, category effects enhance, which in the long run smooth the health practitioner's development perfectly to carry out the auscultation process. it will assist consultants in the auscultation system to become aware of the issues or abnormalities related to the human respiratory system. while the doctors identify the disease in the unique RS, they'll diagnose the associated diseases as a result of those sound abnormalities and prescribe the great remedy to affected person stricken by the syndrome.

### V.BLOCK DIAGRAM

#### A.Implementation of Lung Sound class device

Figure 2 suggests the manner of the lung sound category identification system. Mel-frequency cepstral coefficients (MFCCs) seize ordinary and bizarre lung sound (crackle, wheeze, and rhonchi) function parameters. Coupled with the ok-manner algorithm, clustering of feature parameters lesson the facts and computation necessities. eventually, ordinary lung sound indicators are classified the use of a nearest neighbor type (Kth nearest neighbor). The device idea is described under



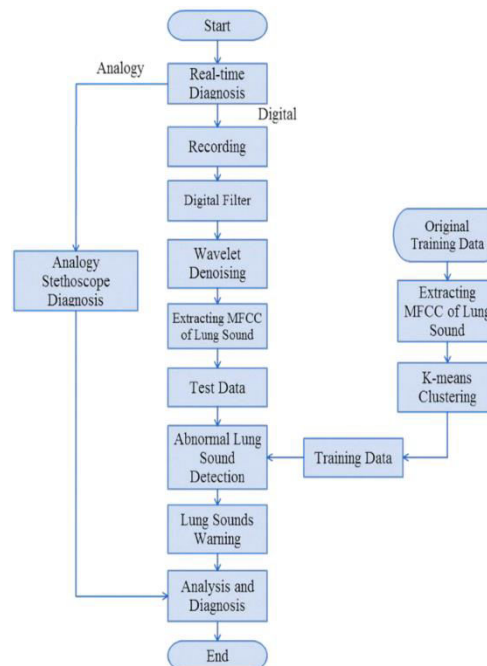


Fig 2. Process of lung sound identification system

## B.system design

Figure 3 presents the proposed device structure, which includes a condenser microphone, digital filter out, lung sound evaluation gadget, and breathing price display. The functions of every unit are defined below.

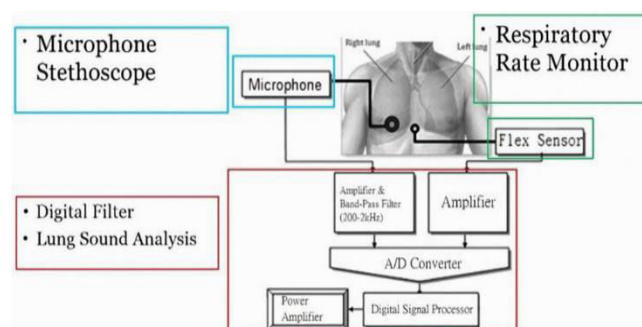


Fig3. System architecture.

## C.Lung Sound signal traits Extraction

MFCC is now being extensively used in speech studies and speaker identification structures. It has robust low-frequency sound skills, and weaker high-frequency sound notion. parent 4 illustrates the relationship among human belief of frequency and real frequency. The MFCC characteristics capture method is based totally on a Fourier remodel: eigenvectors are extracted from the frequencies of every sound body of the sound signals. figure five gives the MFCC parameter-taking pictures method, which is described below.

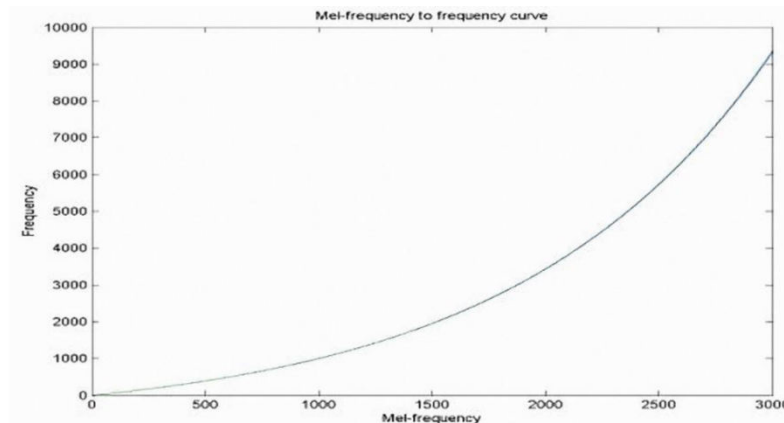


Fig 4. Relationship between human perception and actual frequency.

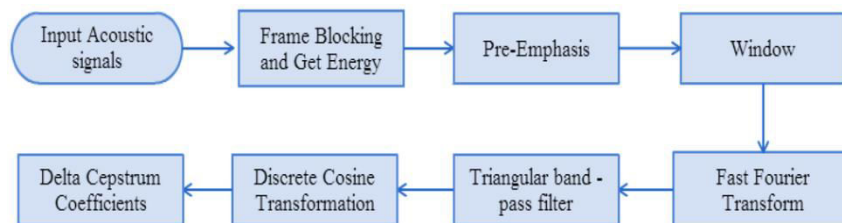


Fig 5. Process of MFCC characteristic parameter capture

## VI. EXPERIMENTAL RESULTS

To confirm the effectiveness of the neural network models for the lung disorder detection project, underneath, we present the receiver working feature (i.e., roc) evaluation plot. The roc evaluation plot, shown in Figure 6, is generated by means of drawing the rate associated with the fee of the true fantastic feature vector and the price of the false high-quality function vector with the aid of considering distinct thresholds.

As proven in Figure 6, the roc curve related to the neural network model exhibits the first-rate prediction fashion; in reality, the nearer the curve comes to the 45-degree diagonal of the roc space in Figure 6, the much less correct the check is (as shown by the kNN roc curve). This confirms the effectiveness of the neural network model for lung disorder detection from breathing audio periods. As a count number of reality, there are several benefits inside the adoption of the neural

community structure. for example, extraordinary from the kNN, the SVM, and the logistic regression algorithms, they provide the possibility to perform incremental updates with stochastic gradient descent (otherwise, as an example, from selection trees, which consider inherently batch-mastering algorithms). furthermore, they're able to model more arbitrary features (for instance, nonlinear interactions) and, for that reason, they could regularly be greater correct. regarding the hazards, neural networks simply require a longer getting to know time (if as compared, as an example, to the choice tree set of rules), but considering that learning is completed only once, this doesn't represent a problem in the adoption of the proposed technique in a real-global context

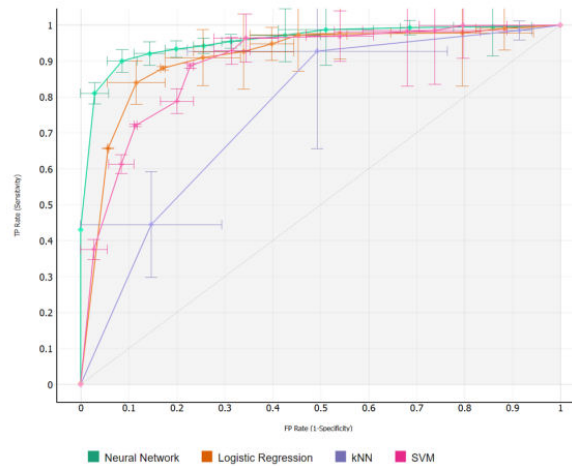


Fig 6. Roc analysis

Figures 7 and 8 show the scatterplots related to the lung disease detection (i.e., with detection  $\in$  {healthy, disease}). In detail, Figure 7 shows that the scatterplot for F3, eg. Spectral Centroid, and F2, eg. Root Mean Square, features.

As emerges from the scatterplot in Figure 7, the healthy distributions (i.e., the red points) are highly concentrated in the lower left corner if compared to the blue ones (i.e., the values acquired for the disease instances), occupying a miles large area within the scatterplot

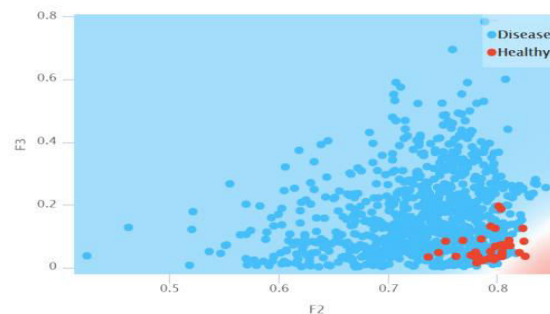


Fig 7. Scatterplot for the F3 (i.e., Spectral Centroid) and F2 (i.e., Root Mean Square) features.

In Figure 8 is depicted the scatterplot related to the feature F4 and, Eg: Bandwidth, and the feature F5, Eg: Spectral Roll-Off.

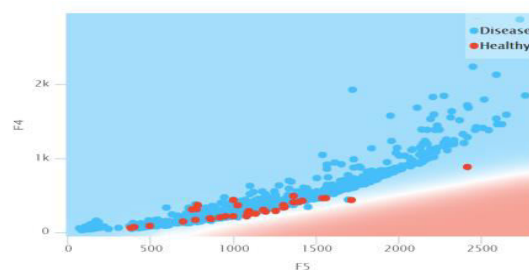


Fig 8. Scatterplot for the F4 (i.e., Bandwidth) and F5 (i.e., Spectral Roll-Off) features.

Fig 9 and 10 are related to the scatterplots of the lung disease detection (i.e., with characterization  $\in \{\text{asthma, bronchiectasis, bronchiolitis, COPD, LRTI, pneumonia, and URTI}\}$ ). In particular, Figure 9 shows the scatterplot for the F8 (i.e., Zero Crossing Rate) and F4 features (i.e., Bandwidth).

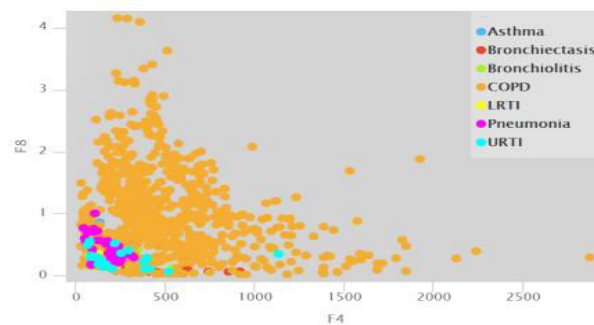


Fig 9. Scatterplot for the F8 (i.e., Zero Crossing Rate) and F4 (i.e., Bandwidth) features.

For the times of the closing lung illnesses, particularly pneumonia and bronchial asthma, the variety is in a similar c programming language, as showed with the aid of the instances overlapping. figure 10 indicates the scatterplot for the F9 (i.e., Poly) and F3 capabilities (i.e., Spectral Centroid).

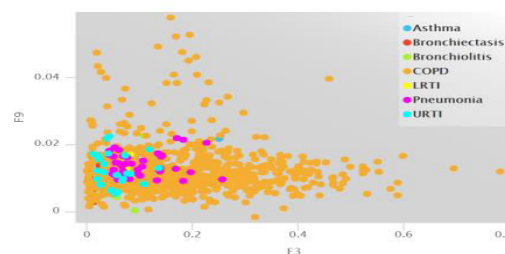


Fig 10. Scatterplot for the F9 (i.e., Poly) and F3 features (i.e., Spectral Centroid)

## VII. CONCLUSION AND FUTURE WORK

As future paintings, it is able to be of interest to explore whether or not deep gaining knowledge of and model checking techniques can be useful to obtain better performance, but also whether function normalisation can help in enhancing performance. moreover, further future works consist of the localisation in the audio session of the precise point where the lung sickness is detected

Taken into consideration the time windows currently asked to attain a COVID-19 analysis, in this paper we propose an approach aimed to drastically lessen this time window about to two.5 seconds. We suggest and examine a method primarily based on switch mastering via exploiting the VGG-sixteen model: we built two models, the primary one aimed to stumble on whether a chest X-ray is associated with a healthy patient of to a patient with standard pulmonary sickness. In case the X-ray is marked with common pulmonary disorder, we enter the X-ray to a 2nd version, aimed to locate whether or not the pulmonary disorder is COVID-19. moreover, we highlight the areas that the models diagnosed as discriminating for COVID-19, to offer explainability. As indicates by means of the experimental results, obtained thinking about distinctive data-sets for a complete of 6,523 chest X-rays, display an accuracy of 0.96 for the discrimination between wholesome and familiar pulmonary disorder patients, and an accuracy of 0.ninety eight for the



**International Journal of Innovative Research in Science, Engineering and Technology***An ISO 3297: 2007 Certified Organization**Volume 12, Special Issue 1, April 2023***10<sup>th</sup> National Conference on Frontiers in Communication and Signal Processing Systems (NCFCSPPS '23)****5<sup>th</sup> -6<sup>th</sup> April 2023****Organized by****Department of ECE, Adhiyamaan College of Engineering, Hosur, Tamilnadu, India**

COVID-19 detection. As future paintings, we plan to assess the proposed method on a much wider set of pulmonary illnesses

**REFERENCES**

- [1]. Yu, S.Z. Design & Implementation for a Lung Sound System. , National Taiwan Normal University, Taipei, 2008.
- [2]. Tsai, P.H. A Digital Electronic In Stethoscope Based on Audio Player. Taiwan, 2007.
- [3]. Chang, G.C.; Lai, Y.F. Performance evaluation and enhancement of lung sound recognition system by two real noisy environments. Biomed. 2010, 97, 141–150.
- [4]. Yamashita, M.; Matsunaga, S.; Miyahara, S. Discrimination between healthy subjects & patients with pulmonary emphysema and than detection of abnormal respiration, 22–27 May 2011; pp. 693–696.
- [5]. Nie, T.G. A Feasibility Study of Lung Sound Auscultation Systems. 2001.
- [6]. Palaniappan, R.; Sundaraj, K.; Ahamed, N.U.; Arjunan, A.; Sundaraj, S. Computer-based respiratory sound analysis: A systematic review. IETE Tech. Rev. 2013, 30, 248–256

**BIOGRAPHY**

Mr.M.Venkatesan.M.E  
Associate Professor,  
Electronics And Communication  
Engineering,  
Adhiyamaan College Of Engineering,  
Hosur,



Aarth T  
Bachelor Of Engineering (student),  
Electronics And Communication  
Engineering,  
Adhiyamaan College Of Engineering,  
Hosur,



Akshara Sree J B  
Bachelor Of Engineering (student),  
Electronics And Communication  
Engineering,  
Adhiyamaan College Of Engineering,  
Hosur,



Buvaneshwari U  
Bachelor Of Engineering (student),  
Electronics And Communication  
Engineering,  
Adhiyamaan College Of Engineering,  
Hosur,

**International Journal of Innovative Research in Science, Engineering and Technology**

*An ISO 3297: 2007 Certified Organization*

*Volume 12, Special Issue 1, April 2023*

**10<sup>th</sup> National Conference on Frontiers in Communication and Signal Processing Systems (NCFCSPS '23)**

**5<sup>th</sup> -6<sup>th</sup> April 2023**

**Organized by**

**Department of ECE, Adhiyamaan College of Engineering, Hosur, Tamilnadu, India**



Devi V  
Bachelor Of Engineering (student),  
Electronics And Communication  
Engineering,  
Adhiyamaan College Of Engineering,  
Hosur,



**SJIF: 8.423**



INTERNATIONAL  
STANDARD  
SERIAL  
NUMBER  
INTERNATIONAL CENTRE



# INTERNATIONAL JOURNAL OF INNOVATIVE RESEARCH

IN SCIENCE | ENGINEERING | TECHNOLOGY

 **9940 572 462**  **6381 907 438**  **ijirset@gmail.com**



[www.ijirset.com](http://www.ijirset.com)

Scan to save the contact details