



e-ISSN: 2319-8753 | p-ISSN: 2347-6710

IJIRSET

International Journal of Innovative Research in
SCIENCE | ENGINEERING | TECHNOLOGY



INTERNATIONAL JOURNAL OF INNOVATIVE RESEARCH

IN SCIENCE | ENGINEERING | TECHNOLOGY

Volume 12, Issue 11, November 2023

ISSN INTERNATIONAL
STANDARD
SERIAL
NUMBER
INDIA

Impact Factor: 8.423

9940 572 462

6381 907 438

ijirset@gmail.com

www.ijirset.com

Study Hub: Collaborative Learning Platform

Siddharth Sharma, Rutuja Sakhare, Alshifa Shaikh, Rohan Polekar, Dr.Vishnu Suryawanshi

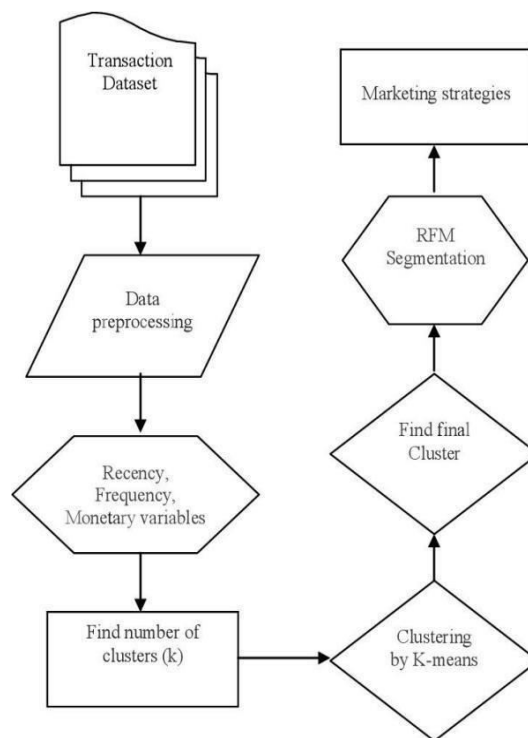
Department of Computer Engineering, Trinity Academy of Engineering, Pune, India

ABSTRACT: In today's increasingly digitalized educational landscape, there exists a significant gap in efficient and comprehensive student-to-student and student-to-institution communication, collaboration, and resource sharing. This lack of a streamlined and user-friendly platform hinders students' ability to connect, engage, and excel in their academic endeavors, leading to isolated learning experiences, missed opportunities for collaboration, and reduced overall academic success. The challenge is to develop an innovative Android application, known as 'Student Connect,' that addresses these critical issues by providing a cohesive and user-friendly platform for students to connect with their peers, access educational resources, collaborate on projects, and communicate effectively with educational institutions. This app aims to bridge the communication gap among students and institutions, fostering a supportive learning community and enhancing the overall educational experience. The 'Student Connect' app seeks to revolutionize how students interact with one another and their educational institutions, ultimately improving academic outcomes, fostering a sense of belonging, and facilitating the exchange of knowledge and resources in an increasingly digital and interconnected world."

I. INTRODUCTION

With the rise of digital tools in education, students often juggle multiple platforms for academic management, collaboration, and communication. Moreover, there's an evident lack of platforms that cater to emotional and social aspects, leaving many concerns unaddressed. Student Connect seeks to provide a unified platform addressing these gaps

II. DESIGN METHODOLOGY



Explanation:

1. Student Users: College students are represented as the primary users of the app.
2. The 'Student Connect' Mobile App serves as the interface through which users interact with the system.
3. App Features are represented as a single entity, including features like user profiles, communication, resource sharing, collaboration tools, and more.
4. App Backend Services handle the communication between the mobile app and the database, including user authentication and data processing.
5. The Database stores user profiles, communication data, shared resources, collaboration records, study plans, and other relevant information. Arrows indicate the flow of data between these components. For example, student users interact with the mobile app to access and utilize app features. The app communicates with the backend services, which, in turn, access and update data in the database.

Chapter 5: Working

· User Registration and Login:

Users typically start by downloading the app and creating an account using their email, username, or social media credential. Profile Creation After registration, users may be prompted to create a user profile, including details like name, profile picture, school or university information, and major or field of study.

· Dashboard:

The app typically features a dashboard that serves as the main hub for users. Here, students can access various features and information. Course Management: Students may use the app to manage their courses. This could involve adding, dropping, or registering for classes. It may also include access to course schedules and syllabi.

· Academic Resources:

The app might provide access to educational resources such as lecture notes, textbooks, study guides, and educational videos.

· Communication Tools:

Many student apps include communication features like discussion forums, chat rooms, or messaging systems to facilitate communication among students, professors, and staff. Assignment and Grade Tracking: Students often use the app to track their assignments, deadlines, and grades. Professors may also use the app to upload grades and assignments.

· Events and Announcements:

The app could display announcements and events related to the school, department, or specific courses. This could include deadlines, campus events, or important news.

· Social Features:

Some student apps may incorporate social features, such as the ability to connect with classmates, join study groups, or share educational content. Notifications: Users may receive notifications for upcoming deadlines, new messages, grades, or other relevant updates.

· Settings and Preferences:

Users can customize their app experience by adjusting settings like notification preferences, profile information, and privacy settings.

· Security and Privacy:

It's crucial for student apps to implement security measures to protect user data and ensure privacy.

III. REQUIREMENT (HW & SW) ANALYSIS PHASE

3.1 Hardware Requirements:

Storage: Estimate the minimum storage space required for app installation and user data. Consider implementing features for clearing cache and managing local storage.

Network Connectivity: Specify the app's network requirements, including support for Wi-Fi and mobile data. Consider the minimum required network speed for smooth functionality.

Battery Usage: Optimize the app to minimize battery consumption, as students often use their devices for extended periods.

Security: Assess hardware security features, such as fingerprint or facial recognition.

Software Requirements:

Development Platform: The development tools and frameworks (e.g Java) .

User Authentication: User authentication mechanism (e.g., email/password, social media login, two-factor authentication) to ensure secure access to the app.

Database: The database system (e.g.MySQL) for storing user data, messages, and other relevant information. Consider scalability and data synchronization requirements.

IV. PROJECT PLANNING

Project planning is a crucial phase in the development of the "Student Connect" app. Proper planning helps you define the scope, objectives, and roadmap for your project. Here are key steps to consider during the project planning phase:

1. Define Project Objectives:

- Clearly state the goals and objectives of the project. What do you want to achieve with the "Student Connect" app? Examples could include improving student communication, enhancing academic support, or fostering collaboration.

2. Scope Definition:

- Determine the features and functionalities that the app will include. This should align with the identified project objectives.- Consider both the core features required for the initial release and potential future enhancements.

3. Target Audience:

- Identify your target audience. In this case, it's college students, but consider specific demographics, such as undergraduate or graduate students, majors, and their unique needs.

4. Project Team:

- Assemble a team with the required skills for app development, design, project management, and marketing. Define roles and responsibilities.

5. Project Timeline:

- Create a timeline that outlines key milestones and deadlines. Consider a realistic timeframe for each development phase.

6. Resource Allocation:

- Determine the resources required for the project, including hardware, software, and personnel.- Allocate a budget and resources accordingly.

7. Risk Assessment:

- Identify potential risks and challenges that could arise during development. Develop strategies to mitigate these risks.

8. Technology Stack Selection:

- Decide on the technology stack for Android app development, considering factors like platform compatibility, scalability, and available resources.

9. Legal and Compliance Considerations:

- Ensure that your app complies with data privacy regulations, copyright laws, and any other legal requirements.

10. User Research:

- Conduct user surveys or interviews to gather insights into the needs and preferences of college students. Use this data to inform your feature selection.

11. Project Plan Documentation:

- Document all the above information in a comprehensive project plan. This plan will serve as a reference and guide throughout the project.

12. Communication Plan:

- Establish a communication plan to ensure that team members, stakeholders, and potential users are well-informed about project progress and updates.

13. Testing and Quality Assurance Plan:

- Outline the testing processes and quality assurance measures that will be implemented during development.

14. Continuous Monitoring and Adaptation:

- Be prepared to adapt the project plan as needed based on evolving requirements, user feedback, and unforeseen challenges.

20Remember that effective project planning sets the foundation for a successful development process. It provides clarity, direction, and a structured approach to bring your "Student Connect" app concept to fruition.

V. CONCLUSIONS

Hence we have successfully completed the Application .

REFERENCES

- [1] J. Pomerantz and D. C. Brooks, "ECAR study of faculty and information technology," ECAR, Louisville, CO, USA, 2017.
- [2] U. Trautwein, "The homework-achievement relation reconsidered: Differentiating homework time, homework frequency, and homework effort," *Learn. Instruction*, vol. 17, no. 3, pp. 372–388, 2007. doi:10.1016/j.learninstruc.2007.02.009
- [3] J. Gikandi, D. Morrow, and N. Davis, "Online formative assessment in higher education: A review of the literature," *Comput. Educ.*, vol. 57, no. 4, pp. 2333–2351, Dec. 2011. doi: 10.1016/j.compedu.2011.06.004
- [4] J. Sweller, J. van Merriënboer, and F. Paas, "Cognitive architecture and instructional design," *Educ. Psychol. Rev.*, vol. 10, no. 3, pp. 251–296, Sep. 1998. doi: 10.1023/A:1022193728205
- [5] P. Bawa, "Retention in online courses: Exploring issues and solutions—A literature review," *Sage Open*, vol. 6, no. 1, pp. 1–11, Jan. 2016. doi: 10.1177/2158244015621777
- [6] M. Herbert, "Staying the course: A study in online student satisfaction and retention," *Online J. Distance Learn. Admin.*, vol. 9, no. 4, 2006.
- [7] R. Barber and M. Sharkey, "Course correction: Using analytics to predict course success," in *Proc. 2nd Int. Conf. Learning Analytics Knowledge (LAK12)*, Apr. 2012. doi: 10.1145/2330601.2330664
- [8] S. Benartzi, J. Beshears, K. L. Milkman, C. R. Sunstein, R. H. Thaler, M. Shankar, W. Tucker-Ray, W. J. Congdon, and S. Galing, "Should governments invest more in nudging?," *Psychol. Sci.*, vol. 28, no. 8, pp. 1041–1055, Jun. 2017. doi: 10.1177/0956797617702501
- [9] G. Walton, "The new science of wise psychological interventions," *Current Directions Psychol. Sci.*, vol. 23, no. 1, pp. 73–82, Feb. 2014. doi: 10.1177/0963721413512856
- [10] B. L. Castleman and L. C. Page, "Summer Nudging: Can personalized text messages and peer mentor outreach increase college going among low-income high school graduates?," *Ed Policy Works Working Paper No. 9*, Charlottesville, VA, USA, 2013.
- [11] K. A. Bird, B. L. Castleman, J. Goodman, and C. Lamberton, "Nudging at a national scale: Experimental evidence from a FAFSA completion campaign," *Ed Policy Works Working Paper No. 54*, Charlottesville, VA, USA, 2017.
- [12] T. Rogers and A. Feller, "Reducing student absences at scale by targeting parents' misbeliefs," *Nature Human Beh.*, vol. 2, pp. 335–342, May 2018. doi: 10.1038/s41562-018-0328-1
- [13] J. L. Nietfeld, L. Cao, and J. W. Osborne, "The effect of distributed monitoring exercises and feedback on performance, monitoring accuracy, and self-efficacy," *Metacognition Learn.*, vol. 1, no. 2, p. 159, Aug. 2006. doi: 10.1007/s10409-006-9595-6
- [14] G. D. Saenz, L. Geraci, and R. Tirso, "Improving metacognition: A comparison of interventions," *Appl. Cognitive Psychol.*, vol. 33, no. 5, pp. 918–929, Apr. 2019. doi: 10.1002/acp.3556
- [15] R. A. Lazowski, and C. S. Hulleman, "Motivation interventions in education: A meta-analytic review," *Rev. Educ. Res.*, vol. 86, no. 2, pp. 602–640, Jun. 2016. doi: 10.3102/0034654315617832
- [16] A. S. Bryk, L. M. Gomez, A. Grunow, and P. G. LeMahieu, *Learning to improve: How America's schools can get better at getting better*, Cambridge, MA: Harvard Education Press, 2015.



INNO SPACE
SJIF Scientific Journal Impact Factor
Impact Factor: 8.423



ISSN INTERNATIONAL
STANDARD
SERIAL
NUMBER
INDIA



INTERNATIONAL JOURNAL OF INNOVATIVE RESEARCH

IN SCIENCE | ENGINEERING | TECHNOLOGY

9940 572 462 **6381 907 438** **ijirset@gmail.com**



www.ijirset.com

Scan to save the contact details