



e-ISSN: 2319-8753 | p-ISSN: 2347-6710

IJRSET

International Journal of Innovative Research in
SCIENCE | ENGINEERING | TECHNOLOGY

INTERNATIONAL JOURNAL OF INNOVATIVE RESEARCH


IN SCIENCE | ENGINEERING | TECHNOLOGY

Volume 12, Issue 9, September 2023

ISSN INTERNATIONAL
STANDARD
SERIAL
NUMBER
INDIA

Impact Factor: 8.423

 9940 572 462

 6381 907 438

 ijrset@gmail.com

 www.ijrset.com



Recalibration of Deep Learning Approach for Detection of Abnormality in Chest X-Ray Image

Nayana M, Sandhya N

PG Student, Dept. of MCA, National Institute of Engineering (NIE), Mysuru, Viweswaraya Technological University, Belagam, Karnataka, India

Assistant Professor, Dept. of MCA, National Institute of Engineering (NIE), Mysuru, Viweswaraya Technological University, Belagam, Karnataka, India

ABSTRACT: Image diagnosis is the significant problem in medicine. Nowadays, with modern facilities that allow doctors to diagnose early and accurately, limiting unnecessary treatment procedures. By that way, the image diagnosis is at the forefront of the processing diagnosis and treatment of the. Heart and lung failure accounts for more than 500,000 deaths annually in the United States and is most commonly screened for using plain film chest X-Ray (CXR). With the growing number of patients, the doctors must overwork, so he cannot counsel and direct take care of his patient. So, a computer system that supports image classification is needed. In this paper, we propose a deep learning model to detect abnormal sentisy in chest x-ray images. The proposed model uses multiple Convolutional Neural Network to decide input image, this is called Multi-CNNs. Input data is the digital chest X-ray image dataset that was collected from 6/2017 to 3/2018 at an Binh Hospital, HCM, VN (AB-CXR-Database). Each component of the Multi-CNN is a convolutional neural network that is developed base on ConvnetJS library. The output of the proposed model is Normal/Abnormal density. In this paper, we also propose a method for synthesizing the results of the components of the model which we are called Fusion rules. The experimental results 96% in our x-rays image dataset showed the feasibility of a proposed Multi-CNNs model.

I. INTRODUCTION

Heart and lung failure is a significant cause of over 500,000 annual deaths in the United States, primarily screened through plain film chest X-rays (CXR). In many countries, including Vietnam, X-rays and CT scans are vital tools in diagnosing cancer. While chest X-rays are cost-effective, quick, and expose patients to minimal radiation, providing a single view of the chest, CT scans offer a comprehensive internal view, aiding in the detection of lung nodules' shape, size, location, and density. Unfortunately, CT scan technology's expense limits its availability in smaller hospitals and rural areas. In contrast, basic chest radiographs are widely accessible, making them the initial diagnostic step for detecting chest abnormalities. With approximately 110 million CXRs performed annually in the United States and a limited number of radiologists available, teleconsultation has become essential, particularly in settings without round-the-clock access to radiologists. This study aims to classify abnormal chest X-ray images from the ChestXRy14 database using pre-processed convolutional neural networks, categorizing them as normal, abnormal, and specifying their types. Additionally, it explores the potential of using smartphones for image-based teleconsultation and the application of deep learning algorithms to automate radiological findings detection in CXRs, although the feasibility of this approach remains to be evaluated.

II. LITERATURE SURVEY

[1]This study developed a recalibration method to build deep learning models to detect radiological findings on CXR photographs. Two publicly available databases (MIMIC-CXR and CheXpert) were used to build the models, and four derivative datasets containing 6453 CXR photographs were collected to evaluate model performance. After recalibration, the model achieved areas under the receiver operating characteristic curve 80 to 90%, respectively, for detecting cardiomegaly, edema, consolidation, atelectasis, pneumothorax, and pleural effusion. The recalibration strategy, respectively, recovered 84.9%, 83.5%, 53.2%, 57.8%, 69.9%, and 83.0% of performance losses of the uncelebrated model.

[2]A computer-aided triage system would mitigate these issues by communicating directly to the primary care physician when more tests are necessary, a technique that has seen considerable growth in recent years, allows for classification of highly heterogeneous images given a sufficiently large dataset. To apply deep learning to the novel



CXR dataset, we will 1. develop a simple pre-processing pipeline using digital image processing techniques and expert radiologist advice 2. create a pipeline that can apply three neural network architectures that have proven successful in classification tasks, GoogLeNet, InceptionNet, and ResNet, on our cohort of CXR images 3. use neural network visualization techniques to understand what type of features our model weights most heavily.

[3]The purposes of this study are to propose an unsupervised anomaly detection method based on a deep neural network (DNN) model, which requires only normal images for training, and to evaluate its performance with a large chest radiograph dataset. We used the auto-encoding generative adversarial network (α -GAN) framework, which is a combination of a GAN and a variation auto encoder, as a DNN model. [7]The algorithms can be trained for multiple data and can track the exploitation of a network. This idea is used for fraud detection and monitoring of the machines. Supervised learning is essential in terms of training and analysing the abnormal behaviour in a network. This paper presents the supervised techniques used to detect the network anomalies.

III. PROPOSED SYSTEM

The proposed system is designed to facilitate the identification of chest anomalies X-rays through by using a unique X-ray ID. It functions by utilizing a hardware device to capture and analyse an X-ray of the chest. Once captured, these images are subjected to recognition processes. Subsequently, the system is capable of identifying abnormalities present in the recognized chest X-rays. This information is then recorded in the Abnormality Detection Record Within this developed system, the process commences by capturing Abnormality Chest X-ray images, which are subsequently employed to train an algorithm. After the relevant details are stored, the system activates the webcam for capturing further Abnormality Chest X-ray images. Each webcam-captured image is then matched against the trained system. Once identified, the system proceeds to store pertinent details including the name and unique ID of the Abnormality Lung X-ray.

IV. METHODOLOGY

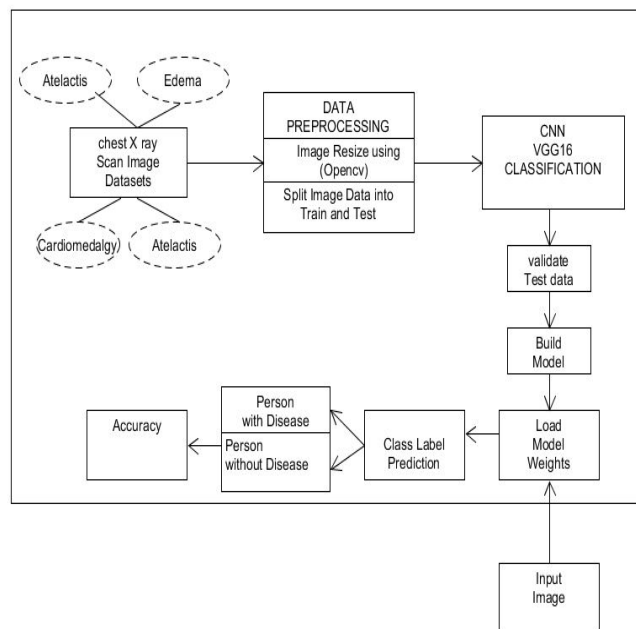


Fig.No: 1 Architecture

We will collect datasets for prediction from Kaggle.com, which consist of six classes. In the data pre-processing phase, we will apply various techniques to the selected data, including image resizing and splitting the data into training and testing sets. The training data will be fed into a Convolutional Neural Network (CNN) algorithm for model training, and subsequently, the model's performance will be evaluated using the test data to calculate accuracy. If the accuracy is satisfactory, we will proceed to build the model file. The CNN architecture involves several layers: the Convolutional layer, which applies filters to detect features in the input; the ReLU (Rectified Linear Unit) layer, which removes



negative values; the Pooling layer, which reduces the image stack's size; and the Fully Connected layer, which connects neurons from preceding layers to every neuron in subsequent layers, mimicking high-level reasoning. This process results in a vector representation of the image after passing through convolution, ReLU, and pooling layers, ultimately enabling the classification of the data.

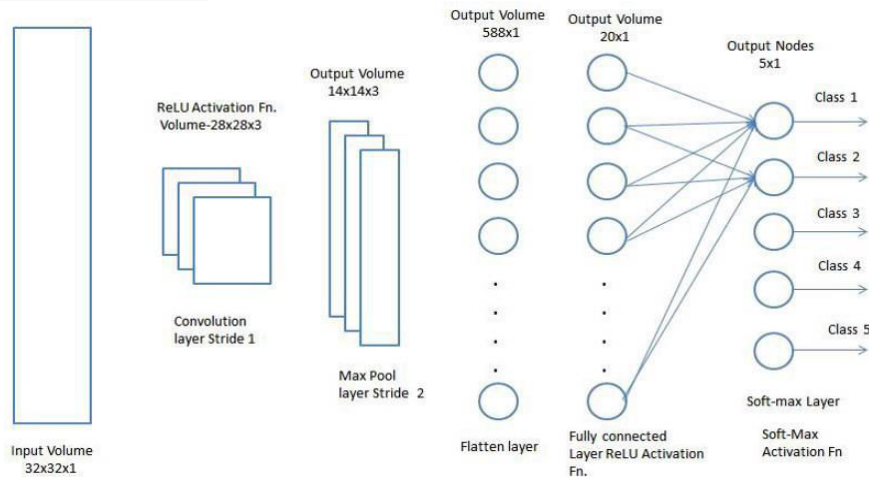


Fig.No: 2 Fully Connected Layer Diagram

In image processing, the convolution is done by accomplishing a form of mathematical operation between matrices representing respectively a kernel and an image. This convolution operation is made by adding each element of the image to its local neighbours, weighted by the kernel. The values of a given pixel in the output image are determined by multiplying each kernel value by the matching input image pixel values. This can be represented algorithmically with the pseudo-code

V. RESULT ANALYSIS

The below Fig. No 3 shows the screenshot of Login page.

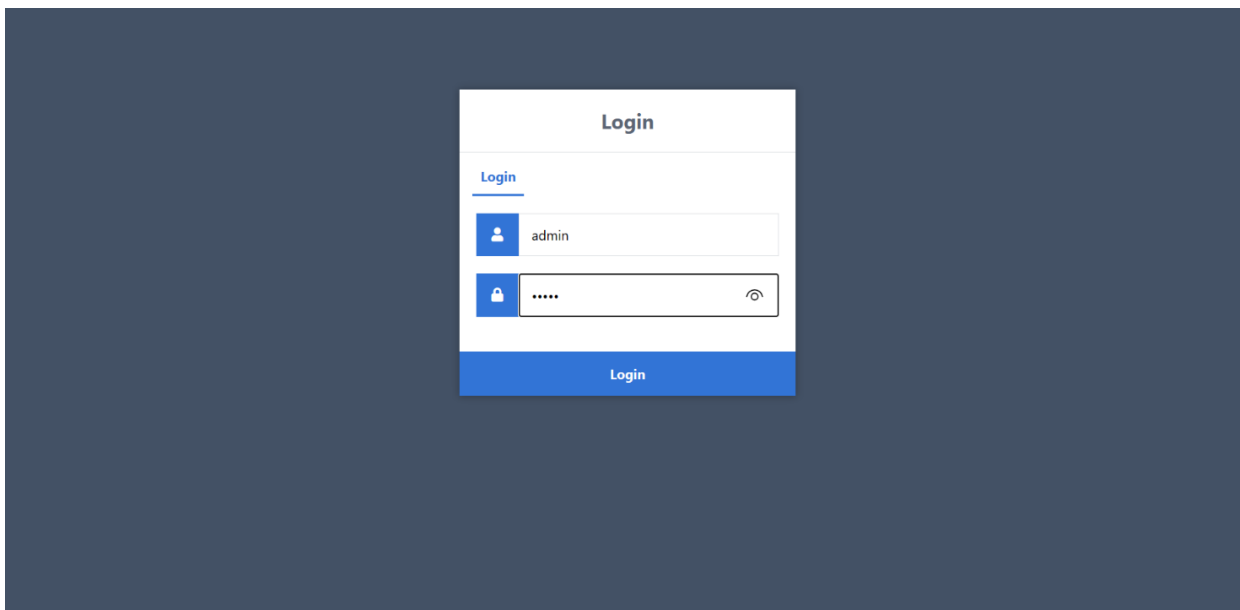


Fig. No 3 Screenshot of Login page



The below Fig. No 4 shows the screenshot of Home page.

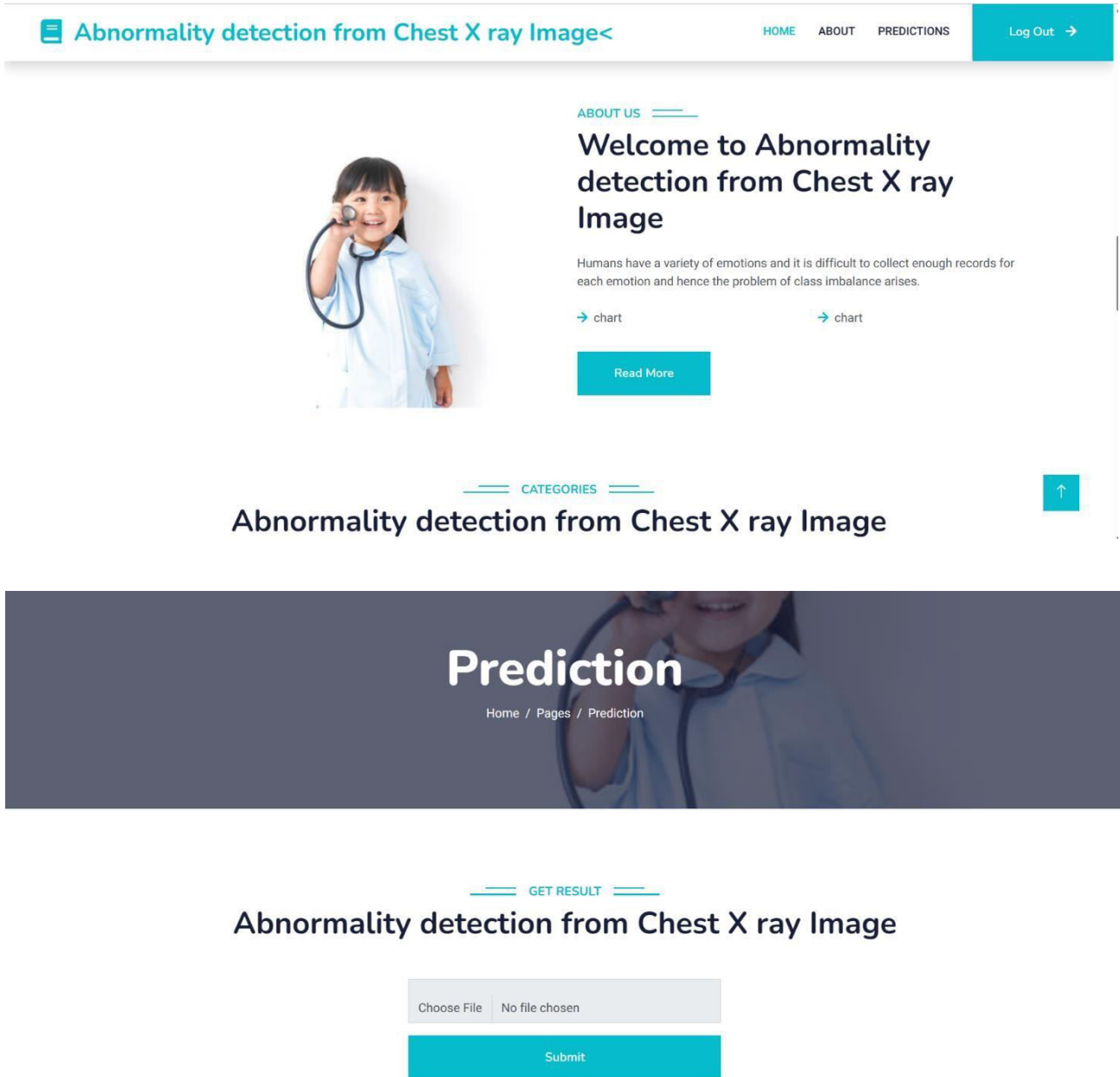


Fig. No 5: Screenshot of Prediction page



The below Fig. No 6 shows the Screenshot of result

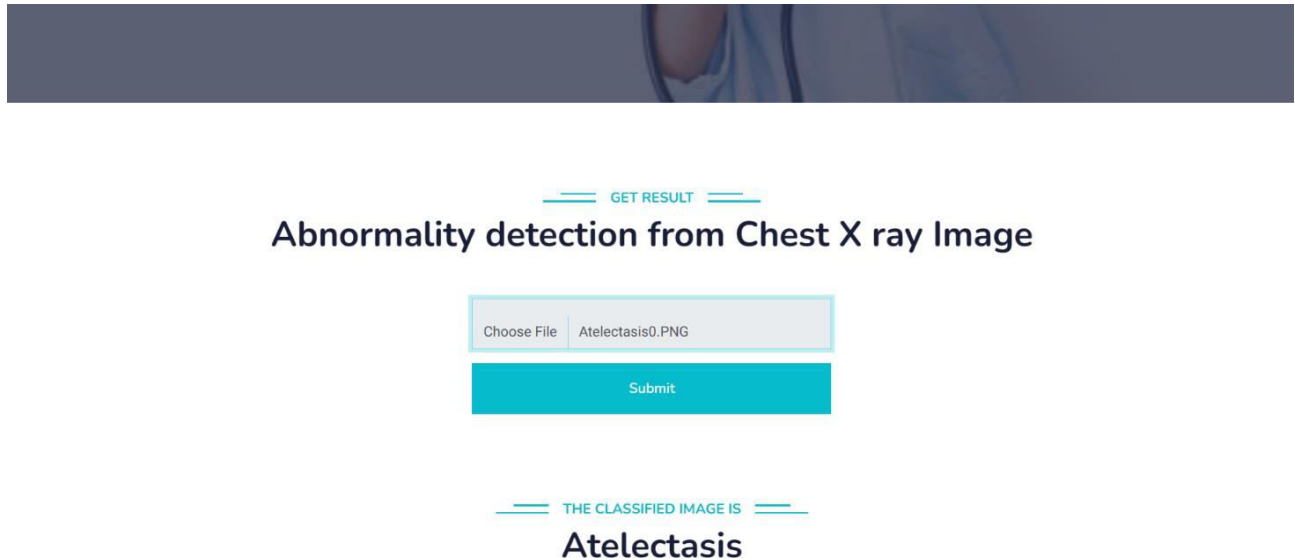


Fig. No 6 : Screenshot of Result

VI. CONCLUSION

The major goal of this paper is to classify abnormality in CXR based on observer's Fixation maps is proposed. The CNN architecture is used to extract the features from fixation maps. The proposed model achieves 100% accuracy on the validation dataset and Train datasets. The objective of this project is to observe whether eyetracking data of fixation map could classify abnormality in CXR image.

REFERENCES

- [1] Recalibration of deep learning models for abnormality detection in smartphone-captured chest radiograph
- [2] Investigation of the performance of Machine Learning Classifiers for Pneumonia Detection in Chest X-ray Images
- [3] Pneumonia Detection from Chest X-ray Images Based on Convolutional Neural Network
- [4] Deep Learning for abnormality detection in Chest X-Ray images
- [5] Chest Abnormality Detection from X-ray using Deep Learning



INNO SPACE
SJIF Scientific Journal Impact Factor
Impact Factor: 8.423



ISSN INTERNATIONAL
STANDARD
SERIAL
NUMBER
INDIA



INTERNATIONAL JOURNAL OF INNOVATIVE RESEARCH

IN SCIENCE | ENGINEERING | TECHNOLOGY

9940 572 462 **6381 907 438** **ijirset@gmail.com**



www.ijirset.com

Scan to save the contact details