



e-ISSN: 2319-8753 | p-ISSN: 2347-6710

IJRSET

International Journal of Innovative Research in
SCIENCE | ENGINEERING | TECHNOLOGY

INTERNATIONAL JOURNAL OF INNOVATIVE RESEARCH

IN SCIENCE | ENGINEERING | TECHNOLOGY

Volume 12, Issue 9, September 2023

ISSN INTERNATIONAL
STANDARD
SERIAL
NUMBER
INDIA

Impact Factor: 8.423

9940 572 462

6381 907 438

ijrset@gmail.com

www.ijrset.com

Establishing Heritage Corridor to Connect Old Temples and Ancient Sites in Order to Balance Maharashtra's Sub-Regions and Promote Socio-Economic Development.

¹Suhas Vilas Kamble, ²Mohit Maroti Gaikwad, ³Prof. Ramchandra N. Gohad.

¹Masters Student, College of Engineering Pune, India

²Masters Student, College of Engineering Pune, India

³Faculty & Research Guide, College of Engineering, Pune, India

ABSTRACT: This research study focuses on establishing a heritage corridor encompassing old temples in a designated region. It aims to comprehensively document the historical significance and cultural heritage, assess preservation efforts, and propose sustainable development strategies. Enhancing economic growth and accessibility for tourists, an efficient road network within the corridor will be developed, contributing to socio-economic development. Additionally, the study explores the heritage corridor's potential in balancing sub-regional development by fostering tourism and heritage conservation in underdeveloped areas. Valuable insights will be provided on preserving cultural heritage while promoting balanced growth and socio-economic development within the region.

KEYWORDS: Ancient Temples and Sites, Heritage Corridor, Socio-economic Development.

I. INTRODUCTION

Maharashtra has rich religious culture since the medieval era. Mostly the borders of Maharashtra state are surrounded by traditional rock-cut architecture and caves. Maharashtra has many Brahmanical, Jain and Buddhist worship places such as stone engraved temples and caves from 7th CE till 14th CE. From 11th CE many ornamental temples took place in Maharashtra.

According to the study report by ICHR, a corpus of 255 temple-related inscriptions is found in overall Maharashtra. (Shah, March 2009). These inscriptions may include either a slab, engraving on pillars or lintel or stone near old temples or sometimes even whole temples were built around 11th CE to 14th CE. Most of the scriptures are in Kannada and Marathi/Devanagari languages. These temples were constructed under the grants of rich kings of that era or their ministers, fiduciaries, royal families, merchants etc. Most of the grants were from the Chalukyas, Shilaharas and Yadavas, the richest dynasties of that era. There are 255 inscriptions in a total of 146 sites. These sites are not just temples, but inscriptions in old caves, and forts and are now present in museums and palaces. Apart from them, Maharashtra has 8 Ashtavinayak temples of Lord Ganesha, 5 Jyotirlingas of Lord Shiva, 4 Shakti peethas of Goddesses, an old temple of Lord Vitthal, the birth place of Lord Hanuman, and many more. Most of the temples belong to Lord Shiva, Sun, Vishnu, Jain temples for Lord Parshvanath, etc, along with Ancient Buddhist caves and monuments.

As time passed by many of these heritage sites are kept un-preserved and even most of them are un-visited. There is a need that these sites must get their identity, they should be preserved and they should be visited by tourists or pilgrims. As mentioned earlier, the socio-economic development is highly unbalanced, and this imbalance can also be covered by proposing the heritage corridor along these temples. Most of these temples lie in remote villages but are near the radius of main highways like major district roads or National Highways. Generally, religious tourism is high than other sectors of tourism, since religious places are the places where the community comes together for worship.

The development of the temple into such a significant institution raises a number of intriguing questions, including the nature of patronage, the socioeconomic and theological context for the construction of temples, and the overall role of the temple in modern society. The temple is a significant employer and a hub for distribution that

redistributed the resources that were directed to it. The temple therefore had a significant impact on both the social and economic aspects of Maharashtrian civilization during the Middle Ages.

In the sharing of natural and cultural heritage, human values are outstanding for their identification, protection, and preservation. Maharashtra has five UNESCO heritage sites, and two of them are in the Marathwada region. However, multiple of Marathwada's heritage sites are still waiting for national or global recognition, possibly due to a lack of recognition and initiative. Connecting heritage sites to the existing recognized ones through corridor would help both in the context of spreading awareness among national and international tourists and well as cause local social development.

Maharashtra state is highly imbalanced from the socio-economic and socio-cultural aspects. Hence, we adopted a Counter Magnet study for balancing the sub-regions by socio-economic and planning techniques. The counter magnet theory aims to balance development by creating attractive centers in less developed regions. This approach considers migration, industries, infrastructure, and heritage sites. Developing industries and infrastructure in underdeveloped areas, it encourages people to stay there, reducing migration to crowded cities. Preserving heritage sites adds to the appeal. Maharashtra can use this approach to achieve balanced growth, providing opportunities and resources for all parts of the state. So, we divided Maharashtra into 3 sub-regions based on 285 km distance from Maharashtra state capital Mumbai. Hence, we initiate the proposal of a Heritage Corridor based on our studies and observations.

List of Caves in Maharashtra			
Sr.No.	Name of caves	Location	Type of Religious / God
1	Ajanta Caves	Ajantha, Aurangabad district	Buddhist cave monuments
2	Aurangabad Caves	Aurangabad	Buddhist caves
3	Bahrot Caves	Dahanu, Thane district	Buddhist caves
4	Bedse Caves	Maval, Pune district	Buddhist caves
5	Bhaja Caves	Maval, Pune district	Buddhist caves
6	Bhatala Caves	Chandrapur, Vidarbha Maharashtra	Mahadev
7	Elephanta Caves	Elephanta Island, Mumbai	Shiva
8	Ellora Caves	Aurangabad district	Kailasa
9	Gandharpale Caves	Raigad	Buddhist caves
10	Ghatotkacha Cave	Janjala ,Sillod, Aurangabad District	Buddhist caves
11	Ghorawadi Caves	Pune	Buddhist caves
12	Kanheri Caves	Borivali, Mumbai	Shiva
13	Karad Caves	Satara District	Buddhist caves
14	Karla Caves	Pune	Buddhist caves
15	Kharosa	Kharosa, Latur, Maharashtra	Narasimha, Shiv Parvati, Kartikeya
16	Kondana Caves	Kondana	Buddhist caves
17	Kuda Caves	Khuda	Buddhist caves
18	Lenyadri Caves	Junnar	Ganesh
19	Mahakali Caves	Andheri East, Mumbai	Buddhist monastery
20	Mandapeshwar Caves	Borivali, Mumbai	Shiva

Table 1 List of Caves in Maharashtra

List of Ashtavinayak Temples		
Sr.No.	Temple	Location
1	Mayureshwar Temple	Morgaon, Pune district
2	Siddhivinayak Temple	Siddhitek, Ahmednagar district
3	Ballaleshwar Temple	Pali, Raigad district
4	Varadavinayak Temple	Mahad, Raigad district
5	Chintamani Temple	Theur, Pune district
6	Girijatmaj Temple	Lenyadri, Pune district
7	Vighneshwar Temple	Ozar, Pune district
8	Mahaganapati Temple	Ranjangaon, Pune district

Table 2 List of Ashtavinayak Temples

List of Shakti-Peethas		
Sr. No.	Name of Temple	Location
1	Mahalakshmi Temple	Kolhapur
2	Tulja Bhavani Temple	Tuljapur, Osmanabad
3	Renuka Mata Temple	Mahur, Nanded
4	Saptashrungi Temple	Vani, Nashik

Table 3 List of Jyotirlingas and Shakti-Peethas.

List of Ancient Temples in Maharashtra			
Sr No.	Temple Location	Name of God	Establishment
1	Ramtek, Nagpur dt.	Loka-Natha , Narasimha	4 th century CE
2	Kasare, Sakri taluka, Dhule	Shiva	653 CE
3	Manor, Palghartaluka, Thane	Sun	691-92 CE
4	Nashik	Kapaleshavara	7 th century CE
5	Anjaneri, Nashik taluka, Nashik	Bhogeshavara (Narayana)	710-711 CE
6	Dive-Agar, Shrivardhan taluka, Raigarh	Goddess Katyayani	727-728
7	Bhandak, Varoda taluka, Chandrapur	God Aditya	772 CE
8	Mehun, Muktainagar taluka, Jalgaon	Ugraditya (Sun god)	807 CE
9	Vajirkhed, Malegaon taluka, Nashik	Tirthankara	915 CE
10	Vajirkhed, Malegaon taluka, Nashik	Tirthankara	915 CE
11	Chinchani, Dahanu taluka, Thane	Goddess Dashami (Durga ,Parvati)	926 CE
12	Bhere, Bhiwandi taluka, Thane	Lonaditya (Sun god)	997 CE
13	Kandhar, Nanded	Bankeshvar Chhalleshvar, somanatha, Tumbeshvar.Tudigeshvara Gooiiga-	10 th century CE
14	Varud, Varud taluka, Amaravati	Vidhu-Shekhara (Shiva)	10 th -11 th century
15	Kharepatan, Devagad taluka, Sindhudurg	Avveshvara	1008 CE
16	Berlin Museum	Bhaiyapeshvara	1034 CE
17	Chinchani, Dahanu taluka, Thane	Goddess Bhagavati	1034 CE
18	Tadkhel, Deglur taluka, Nanded	Number of temples	1047 CE
19	Kalvan, Nashik	Tirthankara	mid-11 th century
20	Mangalvedha, Solapur	Bhogeshvara	1052 CE
21	Hottal, Deglur taluka, Nanded	Siddheshvara	The latter half of
22	Miraj, Sangli	Shiva	1058 CE

23	Ambarnatha, Kalyan taluka, Thane	Ambarnatha	1061 CE
24	Terni, Gadhinglaj taluka, Kolhapur	Jaina	1062 CE
25	Eklara, Mukhed taluka, Nanded	Malleshvara	1066 CE
26	Vai, Yeotmal	Jaina	About 1067 CE
27	Murum, Umarga taluka, Osmanabad	Jaina	1043-1068 CE
28	Bhandarkavthe, South Solapur taluka, Solapur	Nageshvara	1069 CE
29	Vaghli, Chalisgaon taluka, Jalgaon	Siddheshvara	1069 CE
30	Tadkhel, Deglur taluka, Nanded	NigalamkamallaJinalaya	1070 CE
31	Kolhapur	Mahalakshmi	Not dated
32	Yeragi, Deglur taluka, Nanded	Mulasthan	1078 CE
33	Kardkhed, Deglur taluka, Nanded	Somanatha, Dhoresvara, Kalichoresvara & Prasanna Bhairavade	1079 CE
34	Nimbargi, South Solapur taluka, Solapur	Neminatha	1080 CE
35	Chanai, Ambejogai taluka, Beed	Someshvara temple	1080
36	Tirtha, South Solapur taluka, Solapur	Shri Rameshvara	1082 CE
37	Akkalkot, Solapur	Chandrasvaradeva	1092 CE
38	Hippalagaon (Ganeshvadi), Nilanga taluka, Latur	Temples of Brahma, Vishnu, Maheshvara etc on the bank of	1099 CE
39	Dharmapuri, Ambejogai taluka, Beed	(Besaki)settiya-basati (Jaina)	11 th century CE
40	Mangalvedha, Solapur	Uttareshvara	11 th century CE
41	Mangalvedha, Solapur	Narayana-deva	11 th century CE
42	Paithan, Aurangabad	a) Sodhala Narayana, one of the gods in the jagati of Someshvara Swami temple b) Vesu Narayana c) Mhatu Narayana d) Shabstra Matha	Around 1100 CE
43	Hottal, Deglur taluka, Nanded	Traipurush deva (probably shrined)	1101 CE
44	Karadkhed, Deglur taluka, Nanded	SvayambhunSomeshvara	1102 CE
45	Tirtha, South Solapur taluka, Solapur	Rameshvara	1106 CE
46	Ramling- Mudgad, Nilanga taluka, Latur	Nilakantheshvara	1107 CE
47	Andur, Tuljapur taluka, Osmanabad	Manikesh-vara	1107 CE
48	Dalim, Umarga taluka, Osmanabad	Keshavadeva	1107 CE
49	Tirtha, South Solapur taluka, Solapur	Rameshvara	1108 CE
50	Honnur, Kagal taluka, Kolhapur	Jaina <i>basti</i>	About 1108-
51	Bhandarakavathe, South Solapur taluka, Solapur	MulashtanKalideva	1109 CE
52	Talale, Kolhapur	Mahadeva, Buddha & Arhat	1110 CE
53	Sagroli, Biloli taluka, Nanded	Sarveshvara-deva	1110 CE
54	Dongargaon, Pusad taluka, Yeotmal	Shiva	1112 CE
55	Karadkhed, Deglur taluka, Nanded	Someshvara	1113 CE
56	Karadkhed, Deglur taluka, Nanded	Svaymbhu- Somanatha	1126 CE
57	Karadkhed, Deglur taluka, Nanded	Svaymbhu- Somanatha, Doreshvara deva. Kalichoresvara &	1127 CE
58	Sagroli, Biloli taluka, Nanded	Someshvara	1113 CE
59	Sagroli, Biloli taluka, Nanded	Someshvara	1113 CE
60	Akkalkot, Solapur	Siddha- Gajjeshvara deva	1114 CE
61	Sagroli, Biloli taluka, Nanded	Sarveshvara deva	1115 CE
62	Adampur, Biloli taluka, Nanded	Mulasthan	1116 CE
63	Herle, Karavir taluka, Kolhapur	Chandraprabha (Jaina)	1118 CE

64	Hottal, Deglur taluka, Nanded	SvayambhuRebbeshvaradeva	1120 CE
65	Akkalkot, Solapur	Kandarpesh-vara&Keshavadeva	1122 CE
66	Bembra, Deglur taluka, Nanded	Revaneshvara	1122 CE
67	Umrani, Sangli	Hemmesh-vara	1123 CE
68	Kolhapur	Khedaditya deva	1126 CE
69	Mardi, North Solapur taluka, Solapur	Gatrishvara	1127 CE
70	Dhabadev, Shirpur taluka,	Kondaivva goddess	1128 CE
71	Karadkhed, Deglur taluka, Nanded	SvaymbhuSomanatha	1130 CE
72	Karadkhed, Deglur taluka, Nanded	Somanatha	1130 CE
73	Mangalvedha, Solapur	Probably Narayanadeva	1132 CE
74	Karadkhed, Deglur taluka, Nanded	Somanatha	1133 CE
75	Yeragi, Deglur taluka, Nanded	Keshavdeva	1134 CE
76	Dharmapuri Beed	Murari	1134 CE
77	Kolhapur	Parshvanatha (Jaina)	1135 CE
78	Solapur	Kanneshvara, ChatteshvaraMallikariuna (<i>trikuta</i>)	1135 CE
79	Andur, Tuljapur taluka, Osmanabad	Manikeshvara	1136 CE
80	Jogeshvari cave, Mumbai	Goddess Jogeshvari	1137 CE
81	Yeragi, Deglur taluka, Nanded	Keshavadeva	1138 CE
82	Dharmapuri Ambejogai taluka, Beed	Kaleshvara	1151 CE
83	Kolhapur	Jaina (Marasingasettiyabasti)	1139 AD
84	Anjaneri, Nashik taluka, Nashik	Chandra-prabha (Jaina)	1142 CE
85	Kolhapur	Parshvanatha (Jaina)	1143 CE
86	Ambejogai, Beed	Bhucharnatha	1144 CE
87	Bhandak, Varoda taluka, Chandrapur	Shri Narayana	1146 CE
88	Yeragi, Deglur taluka, Nanded	Mulasthan	1149 CE
89	DesingaBorgaon, Kavathe Mahamkala taluka,	Parshvanatha (Jaina)	1150 CE
90	Garasoli, Ambejogai taluka, Beed	Rajdityadeva	1150 CE
91	Bamani, Kagal taluka, Kolhapur	Parshvanatha (Jaina)	1150 CE
92	Kolhapur	Adinatha (Jaina)	First half of th12 th century CE
93	Patne, Jalgaon	Madana- dahana(Shiva)	1153-54 CE
94	Chikurde, Islampur taluka Sangli	Mulasthan	1154 CE
95	Probably from Miraj	Mulsthan, Jaina temple, Mailardeva	1154 CE
96	Kolhapur	Shankeshvara	1156 CE
97	Kolhapur	Shantinatha -Jaina	1154 CE
98	Veture, Vengurle taluka, Sindhudurg	Someshvara	1155 CE
99	Bhalvani Vita taluka (formerly Khanapur	Gavareshvara	1156 CE
100	Palasdev, Indapur taluka, Pune	Vishnu	1157 CE
101	Savargaon, Tuljapur taluka, Osmanabad	Gundeshvara	Around 1158 CE
102	Bassein, Bassein taluka, Thane	Shiva	1162 CE
103	Vangi, South Solapur taluka, Solapur	Mulasthan Shri Bhimeshvaradeva	1162 CE
104	Kamati Khurd, Mohol taluka, Solapur	Simgeshvara	1164 CE
105	Savargaon, Tuljapur taluka, Osmanabad	Ambadevi	1164 CE
106	Kumbhari, South Solapur taluka, Solapur	Balleshvara	1165 CE
107	Umrani, Sangli	Hemmeshvara&Chandaleshvara	1166 CE
108	Malakavathe, South Solapur taluka, Solapur	Jaina	1166 CE
109	Shivani, North Solapur taluka, Solapur	Mallikarjuna	1171 CE

110	Madgrihal, Jat taluka, Sangli	Raya-Murari Somanatha and	1172 CE
111	Bhalavani, Khanapur taluka, Sangli	Jaina	1173 CE
112	Bhivaghat, Satara	Bhimeshvara Possibly to the same	1173 CE
113	Umadi, Jath taluka, Sangli	Jalashayi Anantanarayanadeva ,12	1176 CE
114	Kudal, S. Solapur taluka, Solapur	Sangameshvara	
115	Barshi Takli Akola	Vishnu	1177 CE
116	Apegaon- Khurd, Paithan Taluka, Aurangabad	Vankanath-deva	1178 CE
117	Kolhapur	Shiva	1179 CE
118	Mardi, Solapur taluka, Solapur	Yogeshvara Mahadeva	1180 CE
119	Mardi, North Solapur taluka, Solapur	Siddheshvara	1182 CE
120	Kolhapur	Uma-Maheshvara	1182 CE
121	Lonad, Bhiwandi taluka, Thane	Vyomeshvara	1184 CE
122	Thane	Somanatha deva	1185 CE
123	Mandrup, South Solapur taluka, Solapur	Kumbheshvara	1186 CE
124	Kolhapur	Shantinatha (Jaina)	1187 CE
125	Parel, Mumbai (originally village Mahavali near	Vaidyanatha	1187 CE
126	Mandrup, South Solapur taluka, Solapur	Siddheshvara	1187 CE
127	Ambejogai, Beed	Bhogaditya deva	1188 CE
128	Pandharpur, Solapur	Vitthal	1189-90 CE
129	Kolhapur	Uma- Maheshvara Mahalakshmi	1190 CE
130	Mandrup, South Solapur taluka, Solapur	Kumbheshvara	1191 CE
131	Kasheli, Rajapur taluka, Ratnagiri	Kanakaditya (Sun)	1191 CE
132	Jambgaon, Solapur	Kapila-Siddha- Mallikarjunadeva	1195 CE
133	Nandui, Thane	Someshvara	1197 CE
134	Hanamgaon, South Solapur taluka, Solapur	Jaina	12 th century CE
135	Solapur	Kapilasiddha- Mallikarjuna	12 th century CE
136	Solapur	Mallikarjuna	12 th century CE
137	Dharmapuri, Beed	Jaina	12 th century CE
138	Patoda, Beed	Sangameshvara	12 th century CE
139	Devapur, Deglur taluka, Nanded	Keshavadeva	12 th century CE
140	Honnur, Kagal taluka, Kolhapur	Jaina	12 th century CE
141	Pulunj, Pandharpur taluka, Solapur	Siddhasomadeva	1200 CE
142	Jalgaon, Dapoli taluka, Ratnagiri	Satyeshvaradeva	1202 CE
143	Mandavi, Vasai taluka, Thane	Lakshmi- Narayana	1203 CE
144	Akkalkot, Solapur	Mallikarjuna	1204 CE
145	Satarda, Sawantwadi taluka, Sindhudurg	Sakaleshvara	1206 CE
146	Hutgi, South Solapur taluka, Solapur	Bhogilinga deva	1207 CE
147	Akkalkot, Solapur	Someshvara	1211 CE
148	Satan Dudhani, Akkalkot taluka, Solapur	Somanatha	1212 CE
149	Bagehalli Akkalkot taluka, Solapur	Manikeshvaradeva	1216 CE
150	Bhalavani, Khanapur, taluka, Sangli	Bhaiyala	1216 AD
151	Ranjana, Vasamatnagar taluka, Hingoli	Siddheshvara	1217 CE
152	Itkal, Tuljapur taluka, Osmanabad	Kapilasiddha- Mallikarjuna	1217 CE
153	Darphal, North Solapur taluka, Solapur	3 lingas Gopanneshvara, Vijapaleshvara & Kanchanale shvara	1218 CE
154	Bahal, Chalisgaon taluka, Jalgaon	Dvaraja or Bhavani	1222-23CE
155	Akkalkot, Solapur	Pishachamo chana Kudala Sri Svayambhu Sangamesh varadeva	1223 CE

156	Khidrapur, Shirol taluka, Kolhapur	Koppeshvaradeva	1224-25 CE
157	Pandharpur, Solapur	Vitthal	1226 CE
158	Ambejogai, Beed	Sakaleshvara	1228-29 CE
159	Sillod, Aurangabad	Shiva	1230 CE
160	Gunjegaon, South Solapur taluka, Solapur	Kapilasiddha Mallikarjuna	1232 CE
161	Prakashe, Shahadataluka, Nandurbar	Vikramarka (Sun)	1233-34 CE
162	Mangalvedha, Solapur	Tripurantaka or Bhogishvara	1235 CE
163	Ardhapur	Indreshvara , Kedareshv r, Bhimeshvar, Vishveshar, Nageshvar, Sakaleshvar	1236 CE
164	Kolhapur	Name lost	1237 CE
165	Kolhapur	SvarupJaleshvara	1238 CE
166	Nevasa, Ahemadanagar	Kanaresh-vara	1239 CE
167	Chaudharapada, Bhiwandi taluka, Thane	Four Brahmanas for Shiva	1240 CE
168	Kolhapur	Kapilesvara	1240 CE
169	Ambejogai, Beed	Ramnarayana	1240 CE
170	Tasgaon, Tasgaon taluka, Sangli	Kalideva (Shiva)	1251 CE
171	Methi, Sindkhed taluka, Dhule	Bhadrahari (Vishnu)	1254 CE
172	Nandgaon, Nandgaonkhan deshvar taluka,	Probably Khandesh-vara	1254-55 CE
173	Kanhegaon, Udgir taluka, Latur	Narasimha	1258 CE
174	Chanje, Uran taluka, Raigarh	Uttreshvara	1260 CE
175	Tervan, Rajapur taluka, Ratnagiri	Vimalleshvara	1261 CE
176	Kolhapur	Kallinatha&Mallikarjuna	1261 CE
177	Kolhapur	Nemadevibasti(Jaina)	1266 CE
178	Kolhapur	Brahmesh-vara	1272 CE
179	Unakdeva, Kinavat taluka, Nanded	Unakdeva	1279 CE
180	Mangalvedhe, Solapur	Chandikadevi	1282 CE
181	Kalvar, Bhiwandi taluka, Thane	Krishna	1289 CE
182	Mauje Vafale, Madha taluka, Solapur	Tejeshvara	1290 CE
183	Akshi, Alibag taluka, Raigarh	Kalikadevi	1291 CE
184	Latur	Siddhshvara	12th-13th century
185	Bhandarakavathe, South Solapur taluka, Solapur	Racheshvaradeva, Adityadeva & Rotteshvara deva	12th-13th century CE
186	Kumbhari, South Solapur taluka, Solapur	Baleshvara	12th-13th century
187	Mardi, North Solapur taluka, Solapur	Kallinatha	12th-13th century
188	Gunjegaon, South Solapur taluka, Solapur	Kapilasiddha- Mallikarjuna	12th-13th century
189	Ardhapur, Nanded	Probably Shiva	12th-13th century
190	Kumbhari, South Solapur taluka, Solapur	Devalleshvara	13th century CE
191	Ambejogai, Beed	Yogeshavari	13th century CE
192	Gunjegaon, South Solapur taluka, Solapur	Kapilasiddha-Mallikarjuna	13th century CE
193	Tadaval, Akkalkot taluka, Solapur	Kapilasiddha- Mallikarjuna	13th century CE
194	Vazur, Gangakhed taluka, Parbhani	Someshvara	13th century CE
195	Satarda, Sawantwadi taluka, Sindhudurg	Sakaleshvara	13th century CE
196	Kolhapur	Mahalakshmi	13th century CE
197	Gadhinglaj, Gadhinglaj taluka, Kolhapur	Jaina- Chandraprabha	13th century CE
198	Velapur, Malshirasa taluka,	VateshvaraMatha	1300 CE
199	Hatnur, Selu taluka, Parbhani	Naganatha	1301 CE

200	Velapur, Malshirasa taluka, Solapur	VateshvaraMatha	1305 CE
201	Kata, Washim taluka, Washim	Ujamatha (probably Kantheshvara	1305-05
202	Pandharpur, Solapur	Vitthal	1311 CE
203	Bhandak, Varoda taluka, Chandrapur	Narayana	1326 CE
204	Kanti Savargav, Tuljapur taluka, Osmanabad	Goddess Shridevi (Bhavani)	1398 CE
205	Parda, Mehekar taluka, Buldhana	Gaudeva	14th century CE
206	Ter Osmanabad	Parshvanatha (Jaina)	14th century CE
207	Alte, Hatakangale taluka, Kolhapur	Keshava	Undated
208	Ner, Vaduj taluka (formerly Khatav taluka),	Vishvanatha	Undated
209	Konhalli, Akkalkot taluka, Solapur	Manikeshvardeva	Undated
210	Sirval, Akkalkot taluka, Solapur	Mitteshvara	Undated
211	Bagehalli, Akkalkot taluka, Solapur	Brahmesh-vara	Undated
212	Kusba Saogaon, Kagal taluka, Kolhapur	Jaina	Undated

(Ref:-Viraj Shah, Study of Temples of Medieval Maharashtra (11th To 14th Centuries CE) A Socio-Economic Approach, Indian Council of Historical Research (ICHR), New Delhi, March 2009.)

Table 2 List of Old and Ancient Temples in Maharashtra along with their year of Establishment

Background and Purpose of Study

As per the study of census data from 1971 to 2011, it was found that in Maharashtra state population share decreased in rural areas and increased in the urban area. Considering district-wise urban population ranking within the range of 285 km from Mumbai, a good ranking is observed, and away from Mumbai ranking get decreased. The background study is taken in order to understand the population distribution, migration pattern and socio-economic development in order to balance the development and it has been observed that the regional development is highly imbalanced in state.

Aim:

Analyse Maharashtra Sub-region I, II, and III to balance the regional growth and preserving the ancient cultural sites by proposing a Heritage Corridor.

Objectives:

1. The first objective of this study is to identify and establish a heritage corridor encompassing the old temples situated in the designated region under examination.
2. The study aims to thoroughly document and analyse the historical significance, and cultural heritage of the different cultural and heritage sites present within the identified heritage corridor.
3. Another critical aspect of this research is to evaluate the current state of preservation and conservation efforts dedicated to the old temples, caves, and other heritage sites located within the heritage corridor.
4. To promote economic growth and facilitate ease of access for tourists visiting the various heritage sites, we intend to develop an efficient and well-connected road network within the heritage corridor.
5. Ultimately, this study seeks to propose viable recommendations and strategies that ensure the sustainable preservation and development of the heritage corridor and old temples, securing their importance and value for future generations.



|| Volume 12, Issue 9, September 2023 ||

| DOI:10.15680/IJIRSET.2023.1209047 |

Study Area: In this study review of the whole Maharashtra state is carried out, for this purpose Maharashtra state is divided into three sub-regions based on 285 km distance from Maharashtra state capital Mumbai shown in Fig2.

Sub-region one is the Study area (Districts), which lies between 0 km to 285 km (Buffer) from Maharashtra State Capital Mumbai. This region is rich in having large number of caves influenced from Buddhist cultures, all Ashtavinayak temples and Jyotirlingas.

Sub-region two is the study area (Districts), which lies between 285 km to 570 km from Maharashtra State Capital Mumbai. This region has highest number of Shakti-Peethas and ancient temples predominantly in Solapur and Nanded mixed with the cultures of old Karnataka influenced from Lord Basveshwara This region also has two Jyotirlingas. Many Jaina temples are in these regions.

Sub-region three is the study area (Districts) lies between 570 km to the State border from Maharashtra State Capital Mumbai. There are very few temples & Ramtek is an important temple.

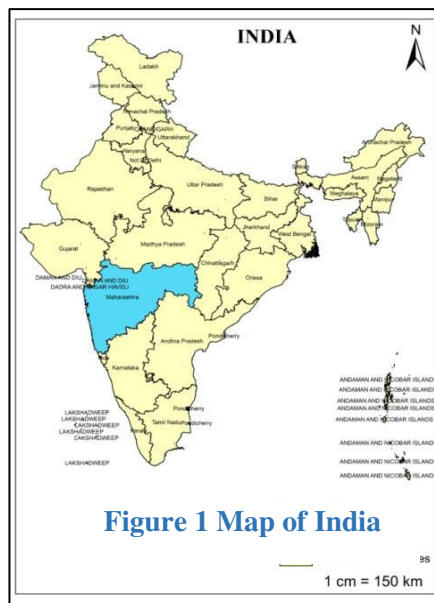


Figure 1 Map of India

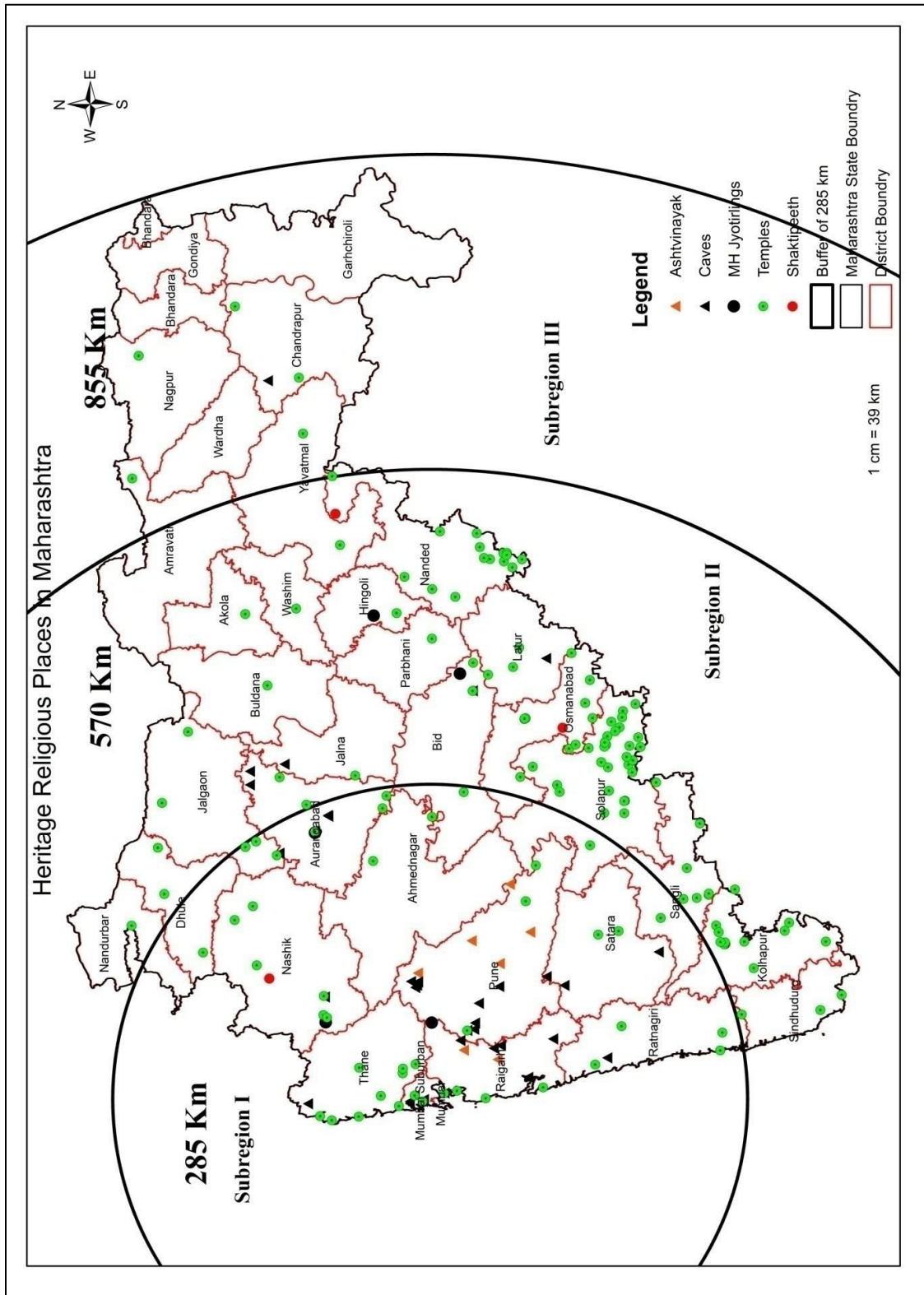


Figure 2 Location of Heritage and Cultural sites on the Map of Study Area (Sub Regions of Maharashtra State)

Methodology :

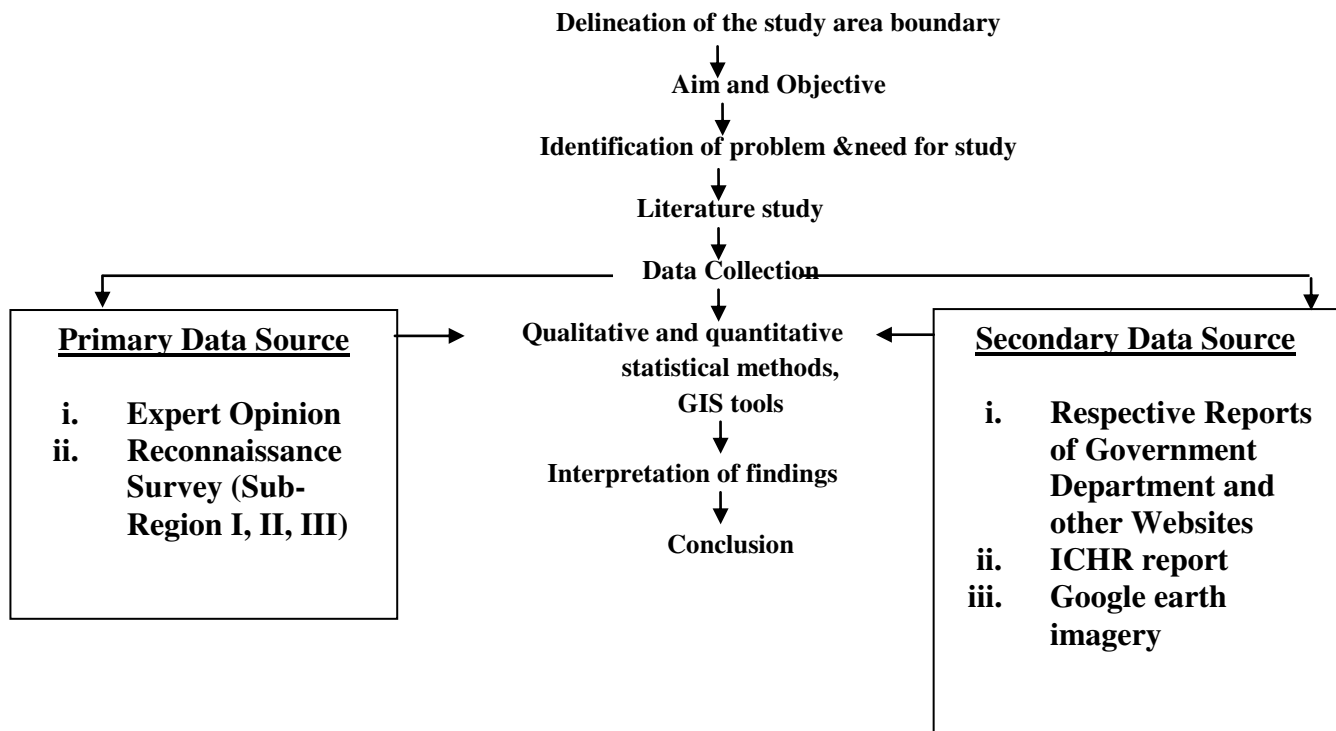


Figure 3 Flowchart of Methodology

The methodology for this study is carried out based on the above flow-charts Fig. 3. The analysis is carried out based on the following parameters based on the literature review. A thematic map is prepared for each parameter based on the data analysis.

Analysis purpose data is collected from ICHR report and some authorised sources that provide manual on tourism, study from UNESCO Heritage sites etc. The data was later combined on excel sheet and preparation of maps spatially with respect to their location and districts with the help of ARC-GIS Software and Google Earth Imagery service.

Result and Discussion :

❖ *Concept of the religious heritage corridor*

The Heritage Corridor concept is connecting the scattered religious sites to religious heritage potential development, and protection. The Religious Heritage corridor is a strategy, for heritage conservation and a method of tourism development that is closely bound with human activities too, and so it can be said as one of the mechanisms of employment generation and economy booster.

This is the **Multiple Points corridor** which has 4 nodes of heritage sites linked in a corridor for the ease of tourists to visit all in a single trip or multiple trips like Char Dham, Narmada Parikrama, etc. this corridor covers a total of 19 districts from the state. Maharashtra state is having several heritage temples and caves . Based on these temples and caves a heritage corridor is defined to boost culture and tourism in sub-regions. the corridor is identified with a 20km buffer to the road is given



and four nodes are identified with a 100 km buffer around them. A total of 145 religious heritage places are covered in this religious corridor.

➤ **Proposals for Heritage Corridor.**

Maharashtra state is having several heritage temples and caves . Based on these temples and caves a heritage corridor is defined to boost culture and tourism in sub-regions. the corridor is identified with a 20km buffer to the road is given and four nodes are identified with a 100 km buffer around them. A total of 145 religious heritage places are covered in this religious corridor.

Based on these temples and caves studied above, a heritage corridor is defined to boost culture and tourism in sub-regions. the corridor is identified with a 20km buffer to the road is given and four nodes are identified with a 100 km buffer around them. A total of 145 religious heritage places are covered in this religious corridor.

The Heritage Corridor concept is connecting the scattered religious sites within 20 km around 1344 km road and 100km around 4 nodes given in table 5 to religious heritage potential development, and protection, in the sub-region. The corridor starts from Nanded and ends at Kolhapur given in fig.86. after starting from Nanded it meets Maharashtra SamruddhiMahamarg via Aundha-Nagnath, Jalna, and further reaches Mumbai then at Mumbai it divides into the two Directions/paths towards Kolhapur via Pune or Ratnagiri from the coastal region of Maharashtra.

This proposal undertook an initiative to share these cultural religious heritage legacies with the people present in the state. In this context, a total of 212 temples, 20caves, 5 jyotirlingas, and all 8 Ashtvinayaks (Ganpati temples) have been identified given in subchapter -13, and out of these 112 temples, 20caves, 5 jyotirlingas, and 8 Ashtvinayaks chosen for this religious heritage corridor, all these sites are presented thematically in map fig 5. It also connects all UNESCO Heritage sites of Maharashtra.

To spread religious awareness and to add one step in the focus on our tradition from the ancient era to the present era as a social aspect related to the protection of cultural religious heritage as well as an economy generation for rural peoples as many sites are in rural areas. This corridor will be labelled as a milestone concerning safeguarding the religious heritage of the state. This will reflect a growing awareness of the importance of religious heritage among the state population as well as a national and international tourist which will play an economical potential within the sub-regions.

In this study, we are discussing a conceptual model or method for developing heritage tourism in the Sub-region, in the state of Maharashtra, for its socio-economic and socio-cultural development along with heritage conservation. This is achieved by first identifying the potential heritage sites which are given in table 5 in the region, and then linking them through a corridor by present Roads with National Highway, State highway, and Samruddhi-Mahamarg of Maharashtra.

Sr. No	From -To	Highway No. Node No.	Heritage places along Corridor	
1	Nanded	Node No.-1	1. Dongargaw Temple Yavatmal 2. AundhaNagnathJyotirling 3. Ardhapur temple Nanded 4. Ranjana Temple Hingoli 5. Someshwar temple Parbhani 6. Junni temple Nanded 7. Kandar temple Nanded 8. Shri VaidyanathJyotirlingParali 9. Dharmapuri temple Beed	10. Adampur temple Nanded 11. Eklara Temple Nanded 12. Tadkhel temple nanded 13. Karadkhel temple nanded 14. Hottal temple Nanded 15. Devapur temple Degloor 16. Yergi temple Degloor 17. Devangiri Temple nanded 18. Bebra temple Nanded
2	Nanded-AundhaNa	National Highway	1. Hemadpanthi Temple Ranjhana 2. Adrapur temple Nanded	

	ganath	-161		
3	Aundha-Jalana	Major District Road	1. Ellora caves 2. Ghreshehwar temple	3. Kailasa temple 4. Aurangabad Caves
4	Jalana to Mumbai	SamruddhiMahamarg		
5	Aurangabad	Node No.-2	1. Bahal Temple Chalisgaon 2. Ghatokach Caves 3. Ajanta Caves 4. Vaghali temple Jalgaon 5. Pitalkhora Buddhist Caves 6. Silod temple 7. BhokardahanTukai Caves 8. Phulambari Shiv temple	9. Ellora Caves 10. Kailasa temple 11. Ghrishneswar caves 12. Aurangabad Buddhist Caves 13. Rohilgad Caves 14. Mohiniraj temple Newasa 15. Dnyaneshwar temple Pathan 16. Manur temple Mjalgaon
6	Mumbai – Pune-Kolhapur	National Highway 48	1. Lonad temple thane 2. Mandpeswari caves 3. Kanheri caves 4. GirijatmakLenyadri caves 5. Jogeshwari Caves 6. Mahakali Caves 7. Ambarnath Temple 8. Gharapuri Caves 9. Elephanta caves 10. Karla Caves	11. Bhaj e Caves 12. Ghorwadi caves 13. Thanali caves 14. Agashiv Buddhist caves 15. Shri Chintamani vinayakTheur 16. Mahalaxmi temple Kolhapur 17. Alte ramling temple Kolhapur 18. Jain Temple Kolhapur 19. Bamani Jain temple Kolhapur 20. Herle Jain temple Kolhapur
7	Mumbai	Node No.-3	1. Lonad temple thane 2. Mandpeswari caves 3. Kanheri caves 4. Girijatmaklenyadry caves 5. Jogeshwari Caves 6. Mahakali Caves 7. Ambarnath Temple 8. Gharapuri Caves	9. Elephanta caves 10. Karla Caves Bhaj e Caves 11. Ghorwadi caves 12. Thanali caves 13. Agashiv Buddhist caves 14. Kolhapur 15. Herle Jain temple Kolhapur
8	Pune	Node No.-4	1. BhimashankarJyotirling 2. Vigheshwar Ganpati 3. Tulaja Buddhist caves 4. Kondhane Caves 5. Karla Caves 6. Bhaje Caves 7. Ghorwadi Caves	8. Pataleswar caves 9. Mahaganapatiranjangaw 10. Shri Chintamani vinayakTheur 11. Shri MayreswarMorgaw 12. ShirwalBudhhisth Caves 13. Wai Caves
9	Mumbai–Ratnagiri-Kolhapur	National Highway 66 - National Highway 24	1. Chiplun Temple 2. Panhalekaji Buddhist caves 3. Gandharplae Buddhist caves 4. Khuda caves 5. Khadsamble caves	6. Ballaleshaer Ganpati 7. Tahnalecaves 8. Akshi temple Alibaug 9. Chanje temple Uran

Table 5 Proposed Religious Heritage Corridor Sites with Nodes

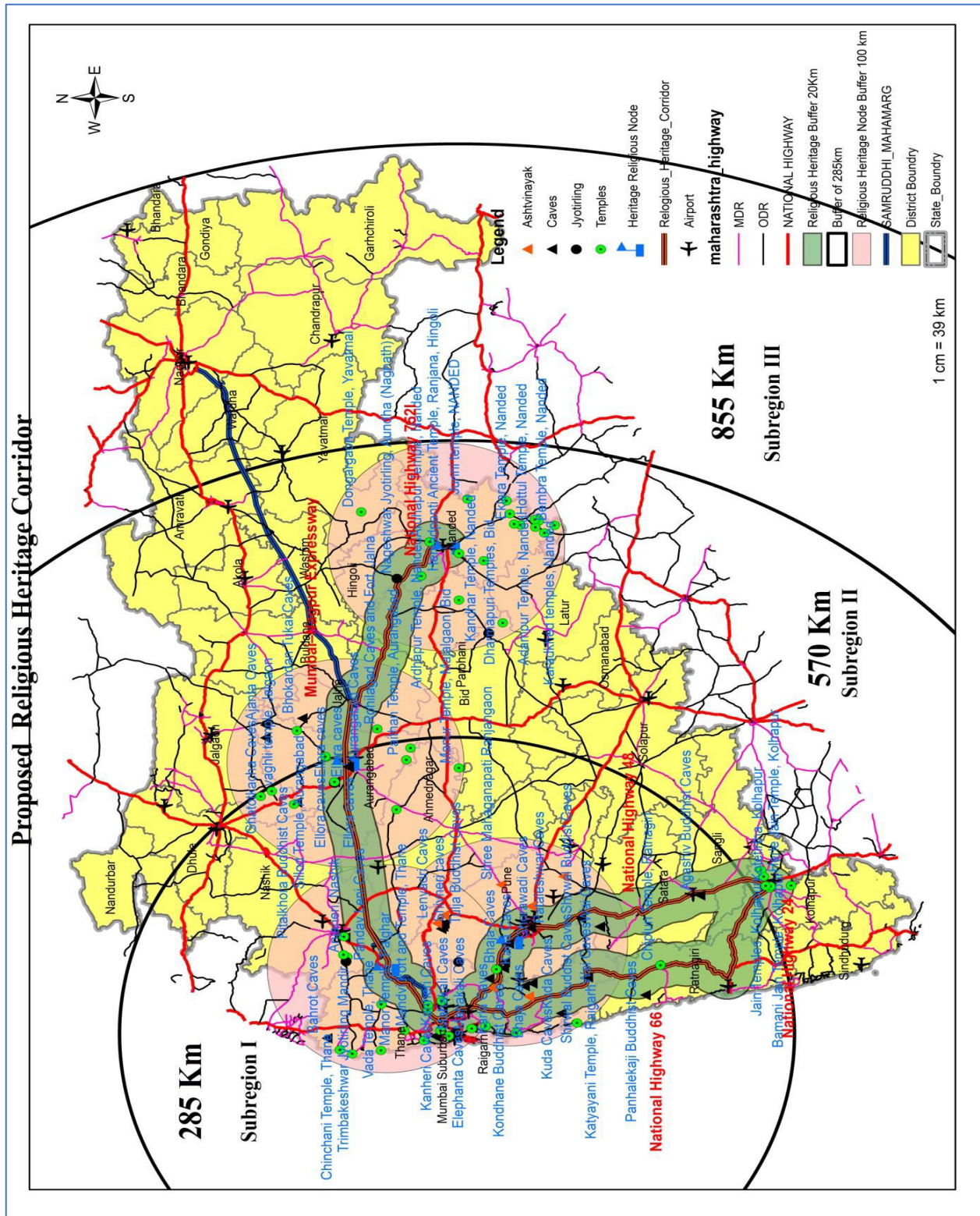


Figure 4 Map of Heritage Religious Corridor A

Conclusion:

In this research paper, the concept of Heritage Corridor provides a valuable tool for preserving cultural heritage and promoting overall development in regions with rich historical significance. Now, let us summarize our key findings and insights to understand how Heritage Corridor can contribute to economic growth, heritage conservation, and cultural enrichment, while actively involving local communities and enhancing the experiences of tourists.

In conclusion, the research paper highlights the potential of Heritage Corridor as a valuable tool for preserving cultural heritage and promoting overall development in regions with rich historical significance. The clustering of heritage sites and monuments along designated corridor can lead to comprehensive development, attracting tourists and generating revenue and employment opportunities. Moreover, showcasing intangible heritage, such as local art and culture, can actively engage tourists and foster a sense of pride and responsibility among local communities for heritage conservation. The involvement of locals in the preservation process contributes to a stronger cultural connection. By revitalizing heritage corridor through public participation, historical sites are rejuvenated, cultural activities are promoted, and economic growth is stimulated at the grassroots level. Ensuring tourist satisfaction becomes crucial in sustaining the success of these corridor, further supporting educational infrastructure growth, and encouraging heritage documentation in native languages.

In conclusion, Heritage Corridor offers a promising approach to sustainable and inclusive development, safeguarding cultural heritage for future generations.

REFERENCES

- 1) Singh Dharmendra, 2007. Migration in Mumbai: Trends in Fifty Years, Demography India.
- 2) Report by National Capital Region Planning Board, A Study on Counter-magnet Areas to NCR, 2008.
- 3) Viraj Shah, Study of Temples of Medieval Maharashtra (11th To 14th Centuries CE) A Socio-Economic Approach, Indian Council of Historical Research (ICHR), New Delhi, March 2009.
- 4) Suddhasheel Ghosh, Parag Narkhede, A conceptual model for heritage tourism corridor in the Marathwada Region, Mrinal Kashid, National Online Conference on Planning, Design, and Management, 2022.
- 5) Economic Survey of Maharashtra, Govt of Maharashtra, 2011-12, 2019-20, 2020-21.
- 6) Dhanai Rekha, Negi R.S., 2014, Migration as A Livelihood Strategy in Uttarakhand, Kurukshetra Ministry Of Rural Development Vol. 62 No. 11.
- 7) Shinde Pravin, Zodage Suresh, 2021, Patterns of Population Migration in Pune District of Maharashtra, Quest Journals Journal of Research in Humanities and Social Science, Vol. 9 Issue
- 8) Ramphul Ohlan, 2012, Pattern of Regional Disparities in Socio-economic Development in India: District Level Analysis, Springer Science Business Media Dordrecht.
- 9) Dr. Rajendra S. Suryawanshi, Mr. Jitendra M. God, 2017, Socio-economic Development In Mahabaleshwar And Jaoli Tahsil of Satara District Maharashtra State India. IJRSS. Vol. 7 Issue 12.
- 10) Dheera Kalota, Mohammad Firoz Khan, Dynamics of Industrialization in Maharashtra: A Spatial Analysis, Researchgate.net /publication / 216680054, January 2011
- 11) Suddhasheel Ghosh, Parag Narkhede, A conceptual model for heritage tourism corridor in the Marathwada Region, Mrinal Kashid, National Online Conference on Planning, Design, and Management, 2022.
- 12) Dr. Raisul Bari, Rural Infrastructural Facilities In Sant Kabir Nagar District (U.P.): A Geographical Analysis, Journal Of Gujrat Research Society, Issn: 0374-8588 Volume 21 Issue 14, December 2019.
- 13) District Census Handbook, Office of the Registrar General & Census Commissioner, Govt. of India.



INNO SPACE
SJIF Scientific Journal Impact Factor
Impact Factor: 8.423



ISSN INTERNATIONAL
STANDARD
SERIAL
NUMBER
INDIA



INTERNATIONAL JOURNAL OF INNOVATIVE RESEARCH

IN SCIENCE | ENGINEERING | TECHNOLOGY

9940 572 462 **6381 907 438** **ijirset@gmail.com**



www.ijirset.com

Scan to save the contact details