



e-ISSN: 2319-8753 | p-ISSN: 2347-6710

IJIRSET

International Journal of Innovative Research in
SCIENCE | ENGINEERING | TECHNOLOGY

INTERNATIONAL JOURNAL OF INNOVATIVE RESEARCH

IN SCIENCE | ENGINEERING | TECHNOLOGY

Volume 13, Issue 4, April 2024

ISSN INTERNATIONAL
STANDARD
SERIAL
NUMBER
INDIA

Impact Factor: 8.423

9940 572 462

6381 907 438

ijirset@gmail.com

www.ijirset.com

Skin Cancer Detection using CNN

R.Arthi¹, Rishigesh Yadav²

¹Assistant Professor, PG& Research Department of Computer Science, Sri Ramakrishna College of Arts & Science, Coimbatore, Tamil Nadu India

²UG Student, PG& Research Department of Computer Science, Sri Ramakrishna College of Arts & Science, Coimbatore, Tamil Nadu India

ABSTRACT: The recent emergence of deep learning techniques is used for analysis the medical image is enabled and the development of intelligent medical imaging based diagnosis systems that can assist the human expert in making the better decisions to about the patients health. Skin is the key organ guarding our internal tissues from outside intrusions and suffers from dermatological problems. For eg, lesions are quite common on human skin. Though most skin lesions are risk free for people on most occasions, skin cancer, a dermatological disease appearing like benign lesion occasionally might cause health problems. In this paper we focus on the problem of skin lesion classification, particularly early melanoma detection, and present a deep learning and Cuckoo search 3D Shearlet Transformation method is approach to solve the problem of classifying a Dermoscopic image skin lesion as malignant or benign. The proposed solution is built around the DLSC transformation is used of the transfer learning paradigm. Experimental results are encouraging: on the ISIC Archive dataset, the proposed method achieves a sensitivity value of 88.66%, which is significantly higher than the current state of the art on that dataset.

KEYWORDS - Medical Image Analysis, Deep Learning, 3D Shearlet Transformation method, Convolutional Neural Networks, Machine Learning, Skin Lesions.

I. INTRODUCTION

Melanoma is a deadly type of skin disease which is frequently undiscovered or misdiagnosed as a harmless skinlesion. There are an expected 76,380 new instances of melanoma and an expected 6,750 passing's every year in the US [1]. Early discovery is basic: the existences of melanoma patients rely upon exact and early determination. Doctors frequently depend on private experience and assess every patient's sores dependent upon the situation by considering the patient's neighbourhood injury designs in contrast with that of the whole body [2]. Without PC based help, the clinical determination exactness for melanoma discovery is accounted for to be somewhere in the range of 65 and 80% [3]. Utilization of Dermoscopic pictures works on symptomatic precision of skin injuries by 49% [4]. In this paper, an original technique for skin sore characterization utilizing profound learning is proposed, executed, and effectively benchmarked against an openly accessible skin injury Dermoscopic picture dataset (the ISIC Chronicle dataset [5]). It utilizes a current convolutional brain organization (CNN) engineering - VGGNet (Extremely Profound Convolutional Organization for Huge Scope Visual Acknowledgment) created by the Visual Calculation Gathering of the College of Oxford [6] in three distinct ways: (i) preparing the CNN without any preparation; (ii) utilizing the exchange gaining worldview to use highlights from a VGGNet pre-prepared on a bigger dataset (ImageNet [7]); and (iii) keeping the exchange learning worldview and tweaking the CNNs design. This paper is organized as follows: Area 2 surveys related work and related datasets and challenges; Segment 3 depicted the proposed arrangement (and its variations) and related strategies and apparatuses; Area 4 presents the after-effects of tests and examines their importance; at last, Segment5 offers closing comments and headings for future work.

II. RELATED WORKS

Latest strategies in the field of melanoma grouping depend close by created highlights, for example, sore sort (essential morphology), sore design (optional morphology), variety, dissemination, shape, surface, and boundary abnormality measures [5]. After highlight extraction, AI strategies, for example, k-closest neighbors (kNN), Fake Brain Organizations (ANNs), calculated relapse, choice trees and backing vector machines (SVMs) can be utilized to play out the order task with moderate success [9].

Examples of related work using hand-crafted features and popular classifiers include:

- Codella et al. [10] utilize hand-coded feature extraction techniques including color histogram, edge histogram,

and a multi-scale variant of color local binary patterns (LBP).

- Crafted by Kawahara et al. [5] investigates utilizing a pretrained Convolutional Net as an element extractor instead of preparing a CNN without any preparation. Moreover, it shows the utilization channels from a CNN pretrained on regular pictures sum up to grouping 10 classes of non dermoscopic skin pictures.

Liao's [5] work endeavored to build an all inclusive skin sickness grouping by applying move learning on a profound CNN and tweaked its loads by proceeding with the back proliferation. In Codella et al. [6], the creators report new cutting edge execution utilizing to the concentrate picture descriptors by utilizing a pre-prepared model from the Image Large Scale Visual Recognition Challenge (ILSVRC) 2012 dataset [6]. They additionally explore the latest organization construction to win the Picture Net acknowledgment challenge called Deep Residual Network (DRN) [6].

III. PROPOSED WORK

In this part we portray the chose convolutional network (ConvNet) engineering and discuss associated plan decisions and execution perspectives.

3.1 ConvNet architecture

VGGNet is a factual and ordinarily involved engineering for convolutional brain networks [6]. This ConvNet became well known by accomplishing superb execution on the Picture Net [6] dataset. It comes in a few varieties of which the two best-performing (with 16 and 19 weight layers) have been made openly accessible. In this work, the VGG16 design (Figure 2) was chosen, since it has been displayed to sum up well to other datasets. The info layer of the organization expects a 224_224 pixel RGB picture. The information picture is gone through five convolutional blocks. Little convolutional channels with a responsive field of 3_3 are utilized. Each convolutional block incorporates a 2D convolution layer activity (the quantity of channels changes between blocks). All secret layers are outfitted with a ReLU (Rectified Linear Unit) as the initiation capability layer (nonlinearity activity) and incorporate spatial pooling through utilization of a maximum pooling layer. The organization is finished up with a classifier block comprising of three Fully-Connected (FC) layers.

3.2 Design considerations

The original VGG16 must be modified to suit our needs, as follows: The last completely associated yield layer should play out a twofold characterization (harmless versus dangerous), not 1000 classes.

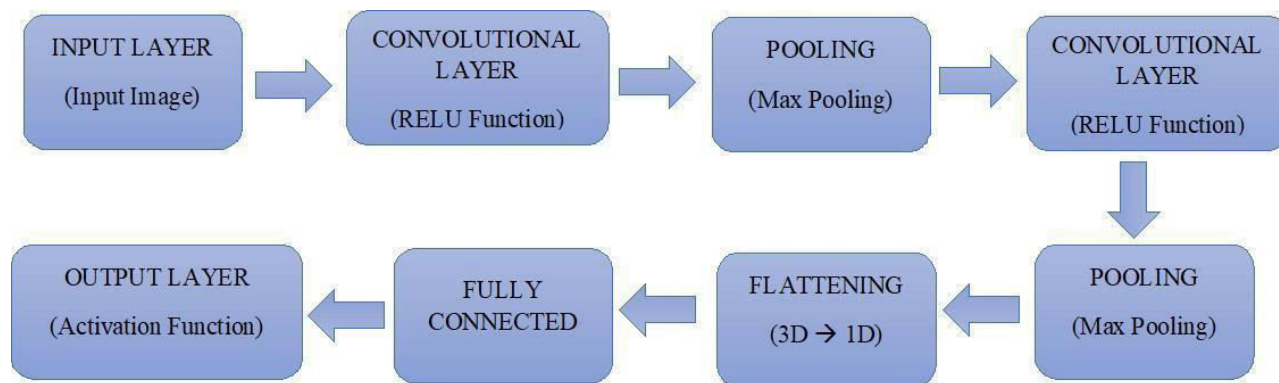


Figure-1 System Architecture

IV. RESULTS AND DISCUSSION



This part talks about the after effects of analyses utilizing the proposed techniques and the chose execution.

4.1 Dataset

The ISBI 2016 Test dataset for Skin Sore Examination towards melanoma location (depicted in Segment 2.2) was utilized for our analyses

4.2 Parameters

All techniques were carried out in Keras. The enhancing capability is RMSProp [6]. The misfortune capability is depicted in [6]. A worth of 0.5 is utilized for a dropout streamlining in the completely associated layers. A bunch size of 16 pictures is chosen because of the little size of our dataset.

4.3 Results

The model assessment is performed utilizing a similar preparation and testing parcel utilized in the ISIC dataset. The measurements utilized are:

- Misfortune, characterized as the evaluation of the arrangement between the anticipated pictures and the groundtruth names.
- Awareness, the small portion of genuine up-sides that are accurately recognized.
- Accuracy, the small portion of recovered cases that are applicable, precision, the quantity of right forecasts isolated by the absolute number of expectation

Table1:Model evaluation: training dataset

	Loss	Accuracy	Sensitivity	Precision
M1	0.4637	70.87%	0.6087	0.5990
M2	0.0203	96.95%	0.8621	0.8560
M3	0.3891	75.88%	0.5903	0.7259

Table2: Model evaluation: test dataset

	Loss	Accuracy	Sensitivity	Precision
M1	0.5743	65.00%	0.4799	0.5777
M2	0.0306	67.67%	0.2311	0.3958
M3	0.3337	80.33%	0.6866	0.6974

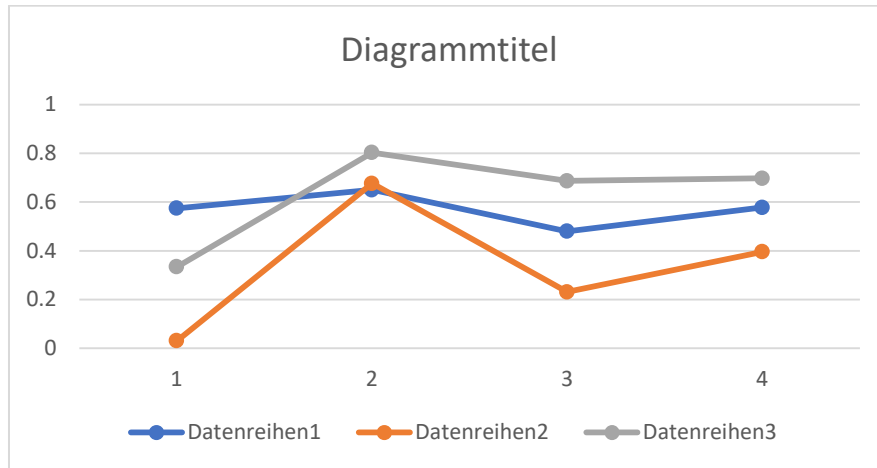


Fig-2 Training Dataset

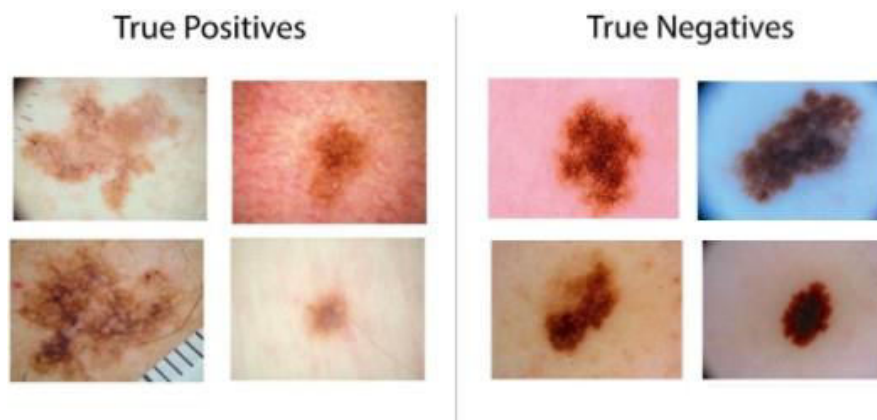


Fig-3 Test Dataset

Fig-4 Classification Results

V. CONCLUSION

The main goal of this research is to design efficient automatic skin lesion classification with high accuracy, performance and low complexity the conventional, skin lesion classification is performed by texture and shape-based segmentation. The complexity is low. But the computation time is high meanwhile accuracy is low. Further to improve the accuracy and to reduce the computation time, a convolution neural network-based classification is introduced. Also the classification results are given as lesion or normal skin images. CNN is one of the deep learning methods which contain sequence of feed forward layers. The training accuracy, validation accuracy and validation loss are calculated. The training accuracy is 97.5%.

REFERENCES

- [1] R. L. Siegel, K. D. Miller, and A. Jemal, "Cancerstatistics, 2016," *CA: a cancer journal for clinicians*, vol.66,no.1,pp.7–30,2016.
- [2] J. Gachon, P. Beaulieu, J. F. Sei, J. Gouvernet, J. P.Claudel, M. Lemaitre, M. A. Richard, and J. J. Grob, "Firstprospectivestudyoftherecognitionprocessofmelanomaindermatologicalpractice," *Archivesofdermatology*, vol.141,no.4,pp.434–438,2005.



|| Volume 13, Issue 4, April 2024 ||

| DOI:10.15680/IJIRSET.2024.1304013 |

- [3] G.ArgenzianoandH.P.Soyer,“Dermoscopyofpig-mented skin lesions—a valuable tool for early diagnosisofmelanoma,”*TheLancetOncology*,vol.2,no.7,pp.443–449,2001.
- [4] H.Kittler,H.Pehamberger,K.Wolff,andM.Binder,“Diagnosticaccuracyofdermoscopy,”*TheLancetOncology*,vol.3,no.3,pp.159–165,2002.
- [5] “InternationalSkinImagingCollaboration:MelanomaProjectWebsite,”<https://isic-archive.com/>.
- [6] K. Simonyan and A. Zisserman, “Very deep convo-lutional networks for large-scale image recognition,”*arXivpreprintarXiv:1409.1556*,2014.



INTERNATIONAL
STANDARD
SERIAL
NUMBER
INDIA



INTERNATIONAL JOURNAL OF INNOVATIVE RESEARCH

IN SCIENCE | ENGINEERING | TECHNOLOGY

 9940 572 462  6381 907 438  ijirset@gmail.com



www.ijirset.com

Scan to save the contact details