



e-ISSN: 2319-8753 | p-ISSN: 2347-6710

# IJRSET

International Journal of Innovative Research in  
**SCIENCE | ENGINEERING | TECHNOLOGY**



# INTERNATIONAL JOURNAL OF INNOVATIVE RESEARCH

IN SCIENCE | ENGINEERING | TECHNOLOGY

Volume 13, Issue 4, April 2024

**ISSN** INTERNATIONAL  
STANDARD  
SERIAL  
NUMBER  
INDIA

Impact Factor: 8.423

 9940 572 462

 6381 907 438

 [ijirset@gmail.com](mailto:ijirset@gmail.com)

 [www.ijirset.com](http://www.ijirset.com)

# Deep Learning-Based Detection of Eye Diseases

**Vedant Pawar, Shivam Shinde, Tushar Shrikhande, Dev Ghop, Prof. S. P. Pingat**

UG Student, Department of Computer Engineering, SKNCOE, Savitribai Phule Pune University, India

Professor, Dept. of Computer Engineering, SKNCOE, Savitribai Phule Pune University, Pune, India

**ABSTRACT:** This study uses machine learning and deep learning techniques to provide a novel method for the diagnosis of eye diseases. The proposed approach makes use of a Python-based application that lets users upload ocular photos, which are subsequently processed to extract significant colour and texture information. A convolutional neural network (CNN) model that can precisely identify the existence of a number of eye illnesses, such as cataract, diabetic retinopathy, glaucoma, and normal eye conditions, is trained using these features. Based on the predicted, the system suggests preventive actions and gives visual feedback regarding the expected sickness. This approach seeks to improve ophthalmology healthcare outcomes by promoting early identification and prevention of eye illnesses using automated analysis of eye pictures.

**KEYWORDS:** Deep learning, Eye disease detection, Fundus images, Convolutional Neural Network (CNN), Medical imaging, Healthcare technology.

## I. INTRODUCTION

In the field of medicine, ocular health continues to be of utmost importance. Prompt and precise diagnosis of eye disorders is critical to maintaining patients quality of life. However, complicated, error-prone, and time-consuming procedures are frequently a part of traditional diagnostic approaches, which poses serious difficulties for medical professionals.

In response, this paper describes a novel project meant to transform ocular healthcare by introducing an advanced computerized detection system. This system, which uses sophisticated image classification methods and cutting-edge deep learning algorithms, is a paradigm shift in the early detection of a variety of eye disorders from fundus images.

The core of this innovation is the application of a Convolutional Neural Network (CNN) model that has been painstakingly refined to identify five different eye diseases: cataracts, glaucoma, Diabetes, and other Disorders. The system's integration of a symptom analysis component guarantees a thorough and all-encompassing assessment of patients, going beyond simple diagnosis and holding the potential to produce optimal diagnostic results.

## II. DEEP LEARNING

In artificial intelligence, deep learning—a subset of machine learning—has become a potent paradigm, especially for image recognition and classification. It is based on the idea of multi-layered artificial neural networks, which allow the model to learn intricate patterns and representations from unprocessed data. Deep learning models hierarchical architecture makes it possible for them to automatically extract pertinent features from input data, which makes them ideal for tasks like object detection, image classification, and medical diagnosis.

To automate the diagnostic process from fundus images in our project on ocular disease detection, deep learning is essential. Through the use of deep learning algorithms, specifically Convolutional Neural Networks (CNNs), our goal is to create an advanced computerized detection system that can correctly identify a wide range of eye disorders. CNNs are the perfect tool for analyzing complex medical images and identifying

subtle patterns that may indicate ocular diseases because of their inherent ability to learn hierarchical features from images.

Our project's creation of deep learning techniques holds several noteworthy advantages for the field of ocular healthcare. First of all, it makes early and precise diagnosis of ocular disorders easier, allowing for prompt intervention and possibly

averting vision loss. Additionally, by offering unbiased and reliable diagnostic assistance, deep learning- based systems can enhance the skills of medical professionals. Furthermore, deep learning models have the potential to reduce medical staff workloads through the automation of some diagnostic.

### III.RELATED WORK

Automated disease detection systems have made significant strides in the fields of deep learning and ocular health. Gradient-based learning for document recognition was first introduced by LeCun et al. (1998) and has since been applied to medical imaging tasks, providing a foundation for further advancements in automated diagnostics.

Litjens et al. (2017) carried out an extensive analysis of deep learning's use in medical image analysis. Their research offered insightful information on a range of methods and uses in the medical industry, including the possibility for better illness detection and diagnosis.

The ImageNet large scale visual recognition challenge, introduced by Russakovsky et al. (2015), is a benchmark that has pushed improvements in image recognition. These difficulties, while not unique to medical images, have accelerated the creation of deep learning models.

A deep learning algorithm for the identification of diabetic retinopathy in retinal fundus photos was created and verified by Gulshan et al. (2016). Their work laid the groundwork for our project's goals by demonstrating the effectiveness of deep learning models in identifying particular ocular health conditions.

The amount of data needed to train a deep learning system for medical images in order to achieve high accuracy was examined by Cho et al. (2017). We took into account the significance of extensive and varied datasets in training dependable and precise models, as demonstrated by their results, while developing our approach.

All of these earlier pieces serve as the cornerstone around which our project is constructed. Our work stands out in addressing important challenges in the field because we prioritize ocular health, early disease detection, and an intuitive interface, even though each study focuses on a different aspect of deep learning in medical imaging.

### IV. METHODOLOGY

**Image Selection:** We curated our dataset from Kaggle, ensuring diversity and reliability in the image samples. Utilizing the `imread()` function, we loaded the images in '.jpg' format, setting the foundation for subsequent analysis.

**Image Preprocessing:** Our preprocessing pipeline included image resizing, grayscale conversion, and Gaussian Blur application. These steps standardized image dimensions, enhanced computational efficiency, and improved feature extraction quality, respectively.

**Feature Extraction:** We focused on variance calculation and Gray Level Co-occurrence Matrix (GLCM) functions for feature extraction. These techniques enabled us to capture image variability and quantify spatial relationships among pixels, crucial for identifying subtle patterns indicative of different eye conditions.

**Image Splitting:** We partitioned the dataset into training and testing sets, allocating 80% for training and 20% for testing. This partitioning strategy ensured robust model evaluation while optimizing computational resources.

**Classification:** Leveraging both traditional machine learning (K-Nearest Neighbours) and deep learning (Convolutional Neural Network) algorithms, we conducted classification tasks. KNN utilized proximity-based classification, while CNN employed deep learning techniques for image recognition. We evaluated KNN's classification accuracy using a comprehensive formula incorporating True Positives, True Negatives, False Positives, and False Negatives.

**Result Generation:** Our final evaluation comprised the analysis of classification accuracy and performance metrics derived from the trained models. This comprehensive assessment provided valuable insights into the efficacy of our approach in accurately diagnosing various eye diseases, paving the way for future advancements in ophthalmic diagnostics and healthcare.

### V. PROPOSED SYSTEM

Data collection and preprocessing: A variety of fundus images, which depict different eye conditions, are gathered and prepared. The deep learning model is trained and tested using this dataset as a basis.

Deep Learning Model: A Convolutional Neural Network (CNN) model that has been carefully optimized through deep learning techniques forms the basis of the system. To classify and detect eye diseases, this model is trained using fundus images that have been pre-processed. It focuses on differentiating between four different eye conditions which are Normal eye, Cataract, Glaucoma, Diabetic Retinopathy.

Component of Symptom Analysis: Along with image-based diagnosis, the system also includes a component for symptom analysis. This part converses with patients using natural Data collection and preprocessing: A variety of fundus images, which depict different eye conditions, are gathered and prepared. The deep learning model is trained and tested using this dataset as a basis.

Deep Learning Model: A Convolutional Neural Network (CNN) model that has been carefully optimized through deep learning techniques forms the basis of the system. To classify and detect eye diseases, this model is trained using fundus images that have been pre-processed. It focuses on differentiating between four different eye conditions which are Normal eye, Cataract, Glaucoma, Diabetic Retinopathy.

Component of Symptom Analysis: Along with image-based diagnosis, the system also includes a component for symptom analysis. This part converses with patients using natural.

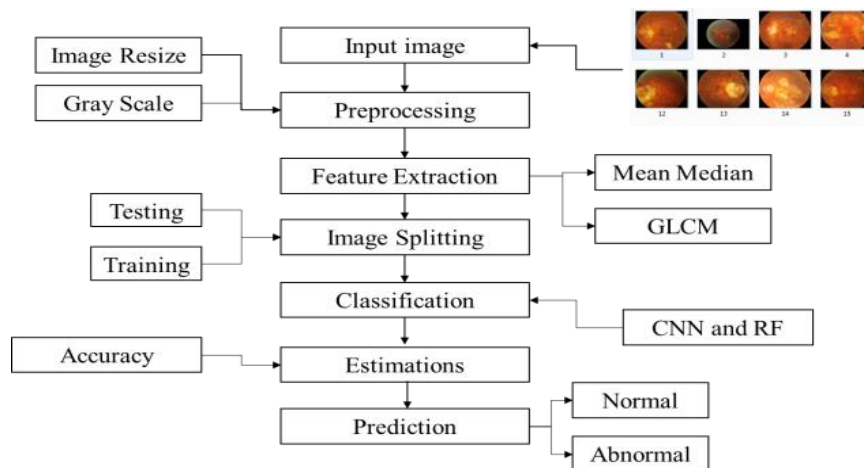


Fig. 1 Methodolgy for how the system will work using CNN

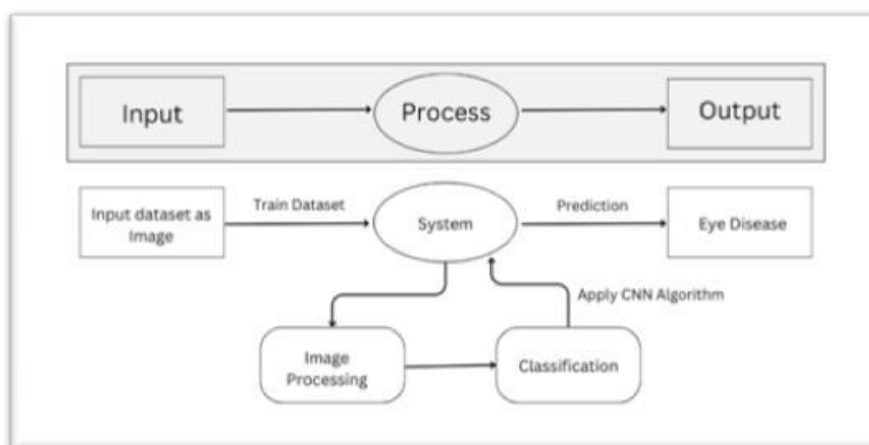


Fig. 2 Proposed System for our CNN Model.



### VI. DATASET

A selection of 5000 high-resolution images illustrating a range of eye diseases and conditions make up the Dataset. These pictures cover a wide range of pathologies from various ophthalmology specialties, such as glaucoma, diabetes, cataracts, and normal. In the field of ophthalmic imaging, the dataset is an invaluable resource for the development and validation of deep learning models, computer-aided diagnostic systems, and image classification algorithms.

Images were taken from publicly accessible datasets, credible ophthalmic institutions, and medical imaging databases. Each image was accurately labelled for further analysis annotated it with the relevant disease or condition. To maintain the integrity of the dataset, quality control procedures were put in place to remove duplicate or poor-quality photos. Standard file formats, like JPEG or PNG, are used to store images, and CSV or JSON metadata files are included to facilitate seamless integration with image processing libraries and machine learning framework.

We have utilized the following five labels, which are used to categorize patients:

- 1. Normal (N).
- 2. Diabetes Retinopathy(D).
- 3. glaucoma (G).
- 4. The cataract (C).
- 5. Other Diseases



Fig 3. Normal Eye



Fig 4. Cataract Disease



Fig 5. Diabetic Retinopathy Disease



Fig 6. Glaucoma

### VII. EXPERIMENTED RESULTS

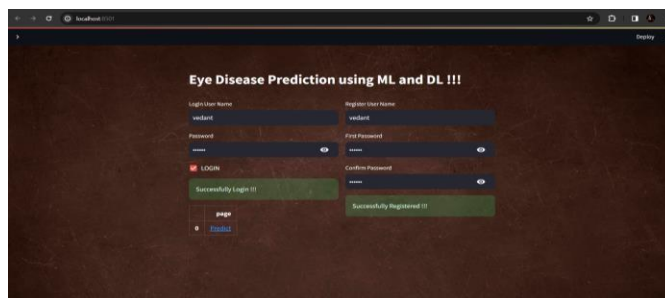


Fig.7. Login Screen

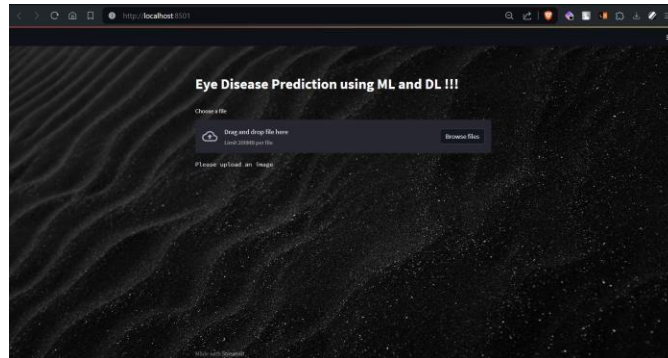


Fig. 8. Upload Input Fundus Image

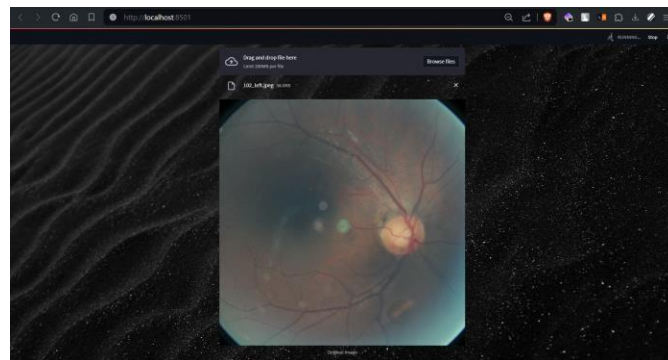


Fig. 9. Uploaded Image

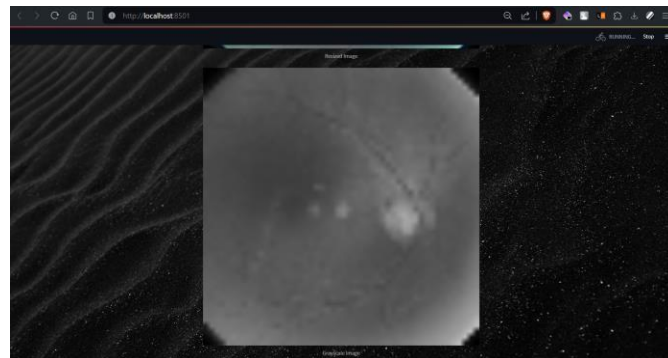


Fig. 10. Grayscale Image

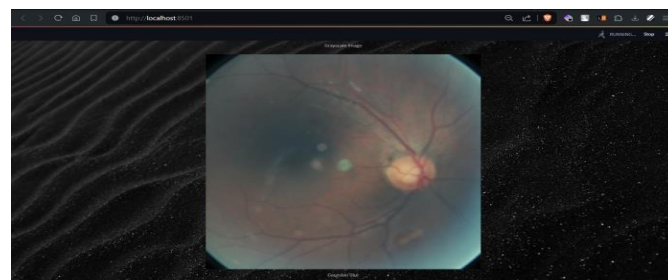


Fig. 11. Gaussian Blur

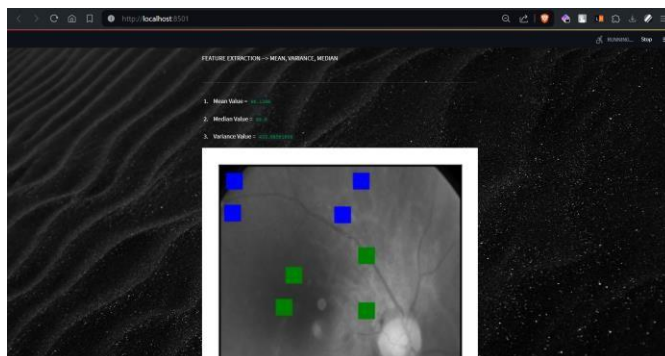


Fig. 12. Feature Extraction

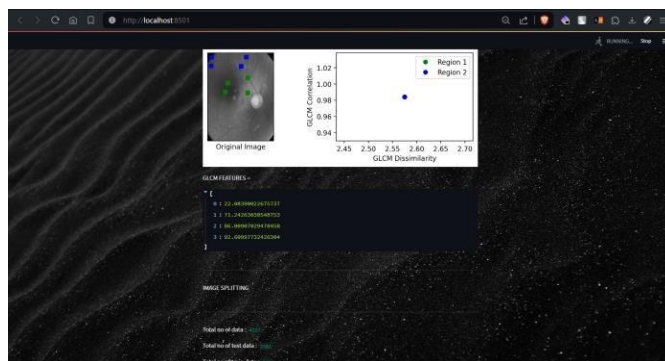


Fig. 13. GLCM Dissimilarity Graph

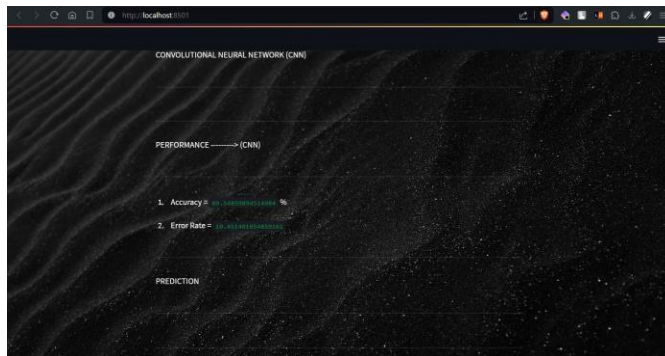


Fig. 14. Performance

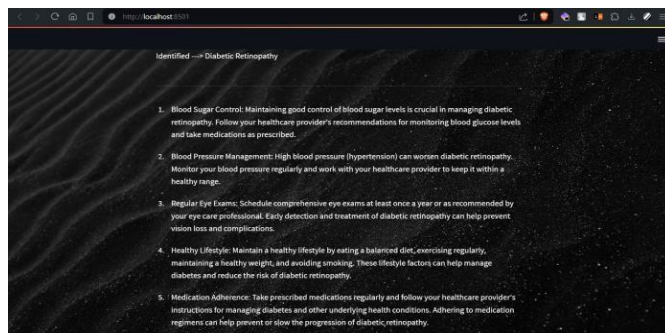


Fig. 15. Outcome

## VIII. CONCLUSION

To sum up, this project uses deep learning to detect diseases early and accurately, which is a significant advancement in ocular healthcare. The system improves patient outcomes, lessens the workload for medical personnel, and streamlines the diagnostic process. Although issues with data quality, privacy, and ethics need to be carefully considered, there could be significant advantages in terms of better patient care and more efficient healthcare delivery. Future research can increase the system's functionality, concentrate on scalability and ethics, and stimulate innovation in healthcare and AI integration.

## REFERENCES

- [1] LeCun, Y., Bottou, L., Bengio, Y., & Haffner, P. (1998). Gradient-based learning applied to document recognition. *Proceedings of the IEEE*, 86(11), 2278-2324.
- [2] Litjens, G., Kooi, T., Bejnordi, B. E., Setio, A. A. A., Ciompi, F., Ghafoorian, M., ... & Sánchez, C. I. (2017). A survey on deep learning in medical image analysis. *Medical image analysis*, 42, 60-88.
- [3] Russakovsky, O., Deng, J., Su, H., Krause, J., Satheesh, S., Ma, S., ... & Berg, A. C. (2015). ImageNet large scale visual recognition challenge. *International Journal of Computer Vision*, 115(3), 211-252.
- [4] Esteva, A., Kuprel, B., Novoa, R. A., Ko, J., Swetter, S. M., Blau, H. M., & Thrun, S. (2017). Dermatologist-level classification of skin cancer with deep neural networks. *Nature*, 542(7639), 115-118.
- [5] Gulshan, V., Peng, L., Coram, M., Stumpe, M. C., Wu, D., Narayanaswamy, A., ... & Webster, D. R. (2016). Development and validation of a deep learning algorithm for detection of diabetic retinopathy in retinal fundus photographs. *JAMA*, 316(22), 2402-2410.
- [6] Johnson, K. W., Torres Soto, J., Glicksberg, B. S., Shameer, K., Miotto, R., Ali, M., ... & Dudley, J. T. (2018). Artificial intelligence in cardiology. *Journal of the American College of Cardiology*, 71(23), 2668-2679.
- [7] Cho, J., Lee, K., Shin, E., Choy, G., Do, S., & Kim, J. (2017). How
- [8] much data is needed to train a medical image deep learning system to Achieve high accuracy?





INTERNATIONAL  
STANDARD  
SERIAL  
NUMBER  
INDIA



# INTERNATIONAL JOURNAL OF INNOVATIVE RESEARCH

IN SCIENCE | ENGINEERING | TECHNOLOGY

 9940 572 462  6381 907 438  [ijirset@gmail.com](mailto:ijirset@gmail.com)



[www.ijirset.com](http://www.ijirset.com)

Scan to save the contact details